

PUENTE, Bldg. Dist. 2

Trim Line 2

B.M.: S.G. 1048 L & Nail N.W. Cor. of conc. signal base relay box 70' No. center-line Valley Blvd. 190' East of Entrance to No. 15400 East Valley Blvd. Elev. 313.407

USE STANDARD STRENGTH PIPE EXCEPT AS NOTED
 USE CEMENT MORTAR FOR ALL VITRIFIED CLAY PIPE JOINTS
 ENCASE FOUR FEET OF SEWER AT POINTS OF INTERFERENCE WITH POLES AS PER S-4-113
 CONSTRUCT HOUSE LATERALS WITH INVERT AT PROP. LINE 6 FEET BELOW CURB GRADE EXCEPT AS NOTED
 ALL STRUCTURES SHALL BE BRICK SEWER STRUCTURES AS PER PLAN NO. S-4-104 EXCEPT AS NOTED
 USE STANDARD MANHOLE FRAMES AND COVERS AS PER PLAN NO. S-4-117 EXCEPT AS NOTED
 CONSTRUCT TOPS OF ALL STRUCTURES IN RIGHTS OF WAY 6" ABOVE FINISHED GRADE
 RESURFACE ALL TRENCHES WITHIN PAVED AREA TO MEET LOS ANGELES COUNTY ROAD DEPT. OR STATE HIGHWAY REQUIREMENTS IN ACCORDANCE WITH PERMIT
 PROVIDE STAKES ON THE PROPERTY LINES OR PROPERTY LINES PRODUCED, AT RIGHT ANGLES TO THE SEWER LINE AT THE CENTER LINE OF EACH MANHOLE
 NO REVISIONS SHALL BE MADE IN THESE PLANS WITHOUT APPROVAL OF THE COUNTY ENGINEER
 NO REPRESENTATIVE OF THE COUNTY ENGINEER WILL SURVEY OR LAY OUT ANY PORTION OF THE WORK
 THE OWNER OR HIS AUTHORIZED REPRESENTATIVE SHALL FURNISH THE COUNTY ENGINEER WITH GRADE SHEETS AND STATIONS OF ALL HOUSE LATERALS AND Y BRANCHES AND SHALL PROVIDE STAKES FOR THEM AT THEIR PROPER LOCATIONS WITH STATIONING PLAINLY MARKED
 ANY CHANGE OF LOCATION SHALL BE REQUESTED IN WRITING BY THE OWNER OR HIS REPRESENTATIVE

PROFILE ALIGNMENT AND GRADE OF
SANITARY SEWERS
 TO BE CONSTRUCTED IN

RC. 2668
 J.N. F576
 PAGE 1

TRACT No 17569

17,327

PRIVATE CONTRACT NO. 2668
 W. S. 38

SHEET 1 OF 2 SHEETS
 SCALE: VERT. 1"=4'
 HORIZ. 1"=40'

MAY, 1953
 PREPARED IN THE OFFICES OF
KEMMERER ENG. CO., INC.

BY: *Walter C. Jernaux*
 REG. C.E. NO. 8246

FOR LEGEND
 SEE PLAN NO. S-4-84

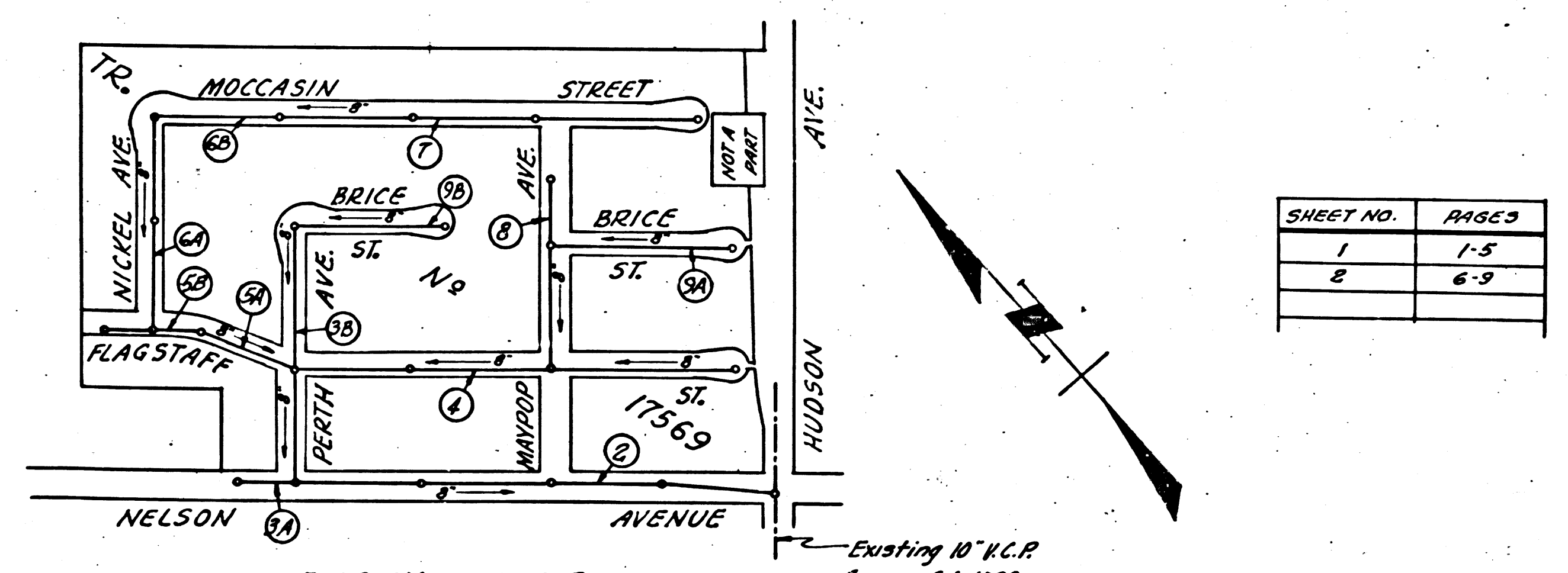
FOR ALLOWABLE LEAKAGE TEST USE FORMULA NO. L, SPEC. 4 SEC. 51

APPROVAL OF THIS PLAN BY THE COUNTY OF LOS ANGELES DOES NOT CONSTITUTE A REPRESENTATION AS TO THE ACCURACY OF THE LOCATION OF, OR THE EXISTENCE OR NON-EXISTENCE OF, ANY UNDERGROUND UTILITY, PIPE OR STRUCTURE WITHIN THE LIMITS OF THIS PROJECT.
 (THIS NOTE APPLIES TO ALL SHEETS)

NOTE: GRADES TO WHICH THIS IMPROVEMENT IS TO BE CONSTRUCTED ARE SHOWN ON PLANS AND PROFILES
 GRADE POINTS FOR TOP OF CURB, CENTER LINE OF STREET OR CENTER LINE OF ALLEY ARE SHOWN BY CIRCLES ON PROFILES AT ALL POINTS BETWEEN DESIGNATED POINTS THE GRADE SHALL BE ESTABLISHED SO AS TO CONFORM TO A STRAIGHT LINE DRAWN BETWEEN SAID DESIGNATED POINTS
 ELEVATIONS ARE IN FEET ABOVE U.S.G.S. DATUM OR MEAN SEA LEVEL
 THIS DRAWING AND THE DATA HEREON ARE HEREBY MADE A PART OF THE SPECIFICATIONS
 WORK SHALL BE CONSTRUCTED ACCORDING TO SPECIFICATIONS ON FILE IN THE OFFICE OF THE COUNTY ENGINEER AND SHALL BE PROSECUTED ONLY IN THE PRESENCE OF THE COUNTY ENGINEER
 BEFORE WORK CAN BE STARTED, THE CONTRACTOR MUST OBTAIN A PERMIT TO EXCAVATE IN THE COUNTY STREETS FROM THE COUNTY ROAD DEPT. JOB NO. 1-10-51 LOS ANGELES AND MAKE A DEPOSIT WITH THE COUNTY ENGINEER \$100.00 AT 108 W. 10TH STREET, SUFFICIENT TO COVER THE COST OF CONSTRUCTION INSPECTION AND RECORD PLANS & PERMIT MUST BE OBTAINED FROM THE STATE OF CALIFORNIA DIVISION OF HIGHWAYS, 800 SO. SPRING ST.

COUNTY OF LOS ANGELES, CALIFORNIA
 WILLIAM J. FOX, County Engineer
 APPROVED: *Walter C. Jernaux*
 A.M. DRAWING
 APPROVED BY: *Walter C. Jernaux* OFFICE ENGINEER
 CHIEF ENGINEER OF DISTRICT NO. 12
 SANITATION DISTRICT NO. 12

CHECKED BY: *Walter C. Jernaux* 1953
 TITLE OF COUNTY ENGINEER, REG. C.E. NO. 8246



INDEX MAP
 SCALE: 1"=300'
 TRACT NO 17569
 P.C. 2668 J.N. F576

Existing 10" V.C.P.
 Sewer C.I. 1093

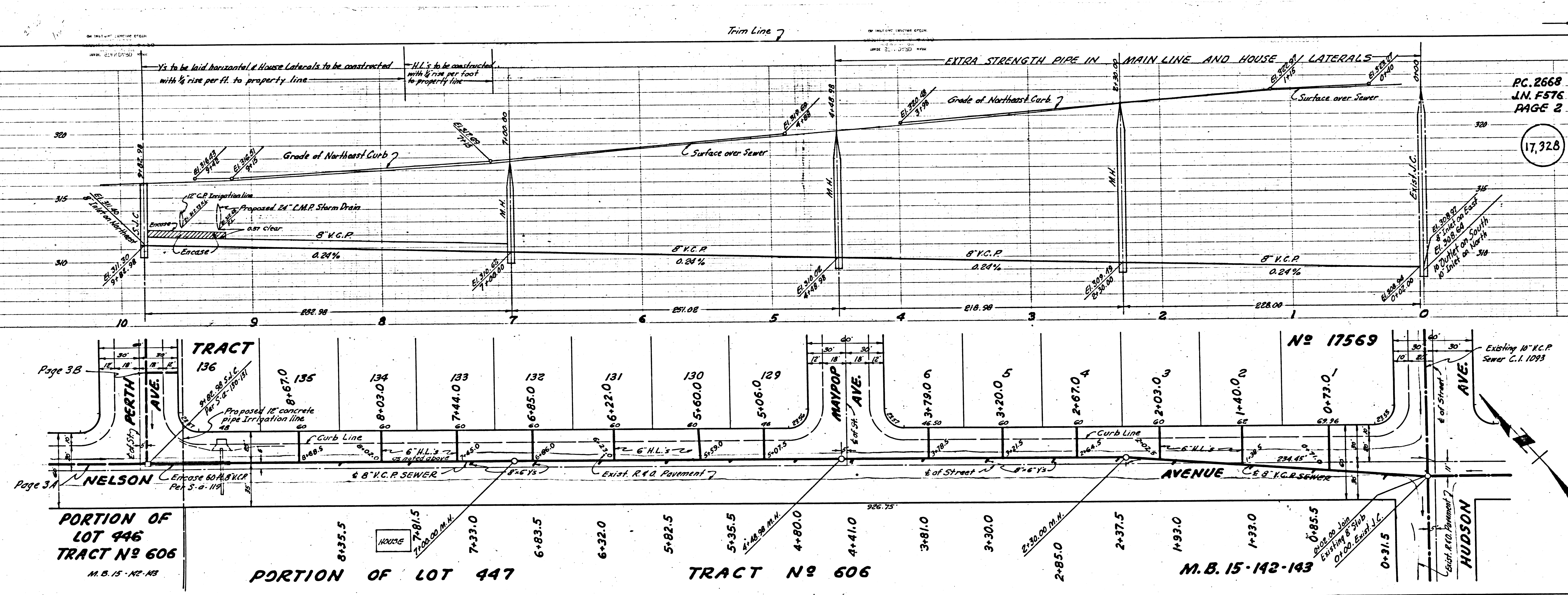
15

Trim Line

TRACT No 17569

RC. 2668

1



PC. 2668
J.N. F576
PAGE 2
17,328

Page 3B
Page 3A
PORTION OF LOT 446
TRACT No 606
M.B. 15-142-143

PORTION OF LOT 447

TRACT No 606

M.B. 15-142-143

No 17569

Trim Line 7

Trim Line 4

To be laid horizontal & House Laterals to be constructed with 1/4" rise per ft. to property line

HL's to be constructed with 1/4" rise per foot to property line

EXTRA STRENGTH PIPE IN MAIN LINE AND HOUSE & LATERALS

Grade of Northeast Curb 7

Surface over Sewer

Grade of Northeast Curb 7

Surface over Sewer

8" V.C.P. 0.24%

8" V.C.P. 0.24%

8" V.C.P. 0.24%

8" V.C.P. 0.24%

8" V.C.P. 0.24%

8" V.C.P. 0.24%

8" V.C.P. 0.24%

8" V.C.P. 0.24%

8" V.C.P. 0.24%

8" V.C.P. 0.24%

8" V.C.P. 0.24%

8" V.C.P. 0.24%

8" V.C.P. 0.24%

8" V.C.P. 0.24%

8" V.C.P. 0.24%

8" V.C.P. 0.24%

8" V.C.P. 0.24%

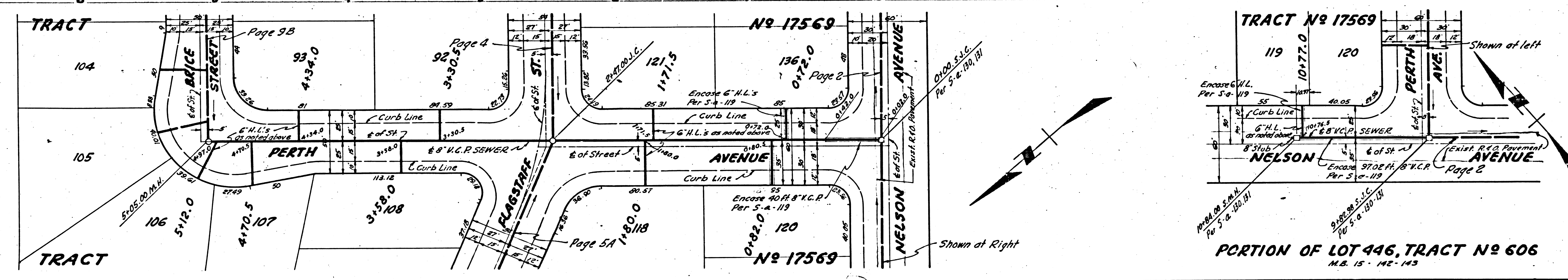
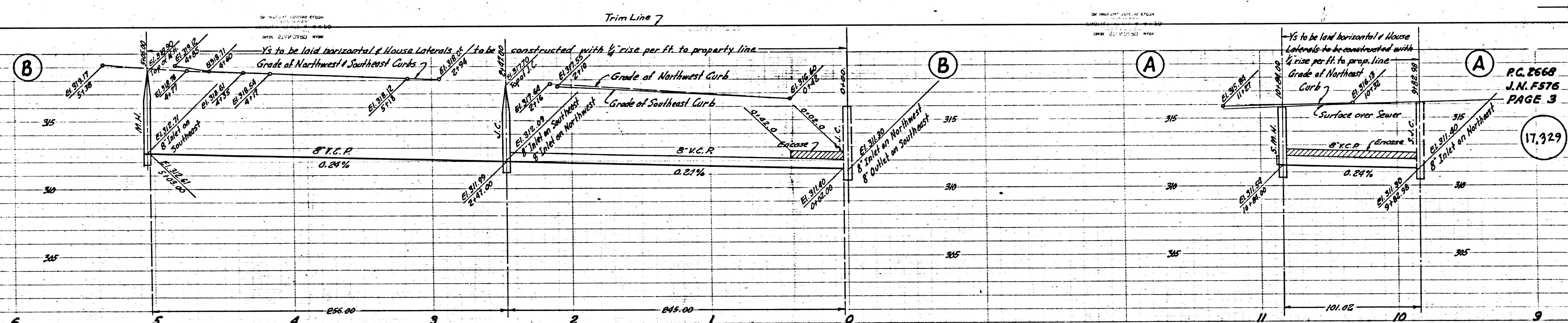
8" V.C.P. 0.24%

8" V.C.P. 0.24%

8" V.C.P. 0.24%

8" V.C.P. 0.24%

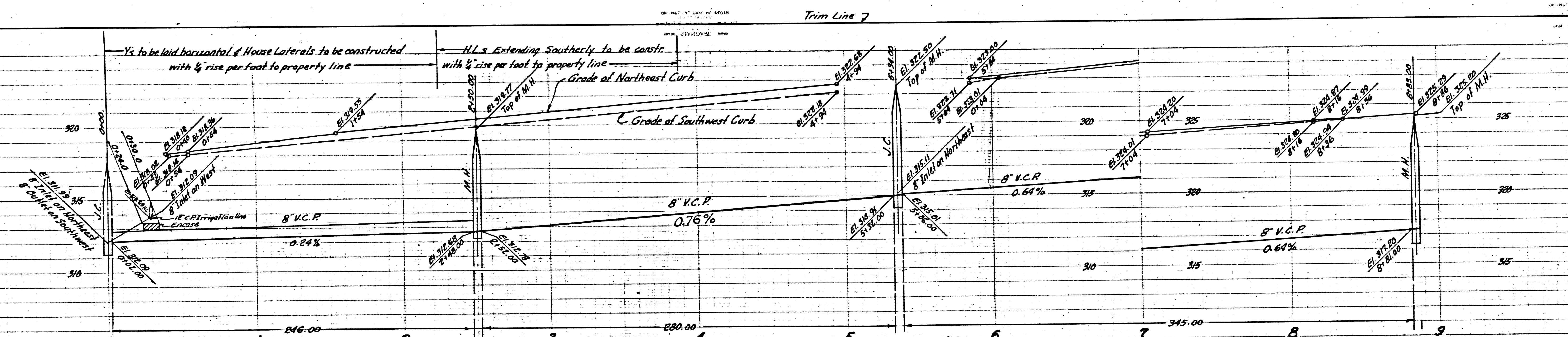
8" V.C.P. 0.24%



P.C. 2668
 J.N. F576
 PAGE 3

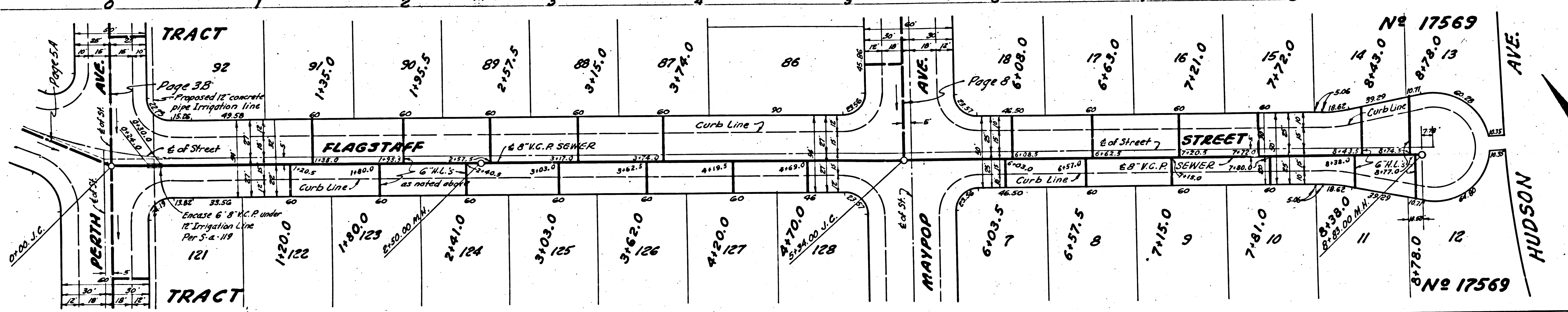
17,329

PORTION OF LOT 446, TRACT No 606
 M.S. 15 - ME-143

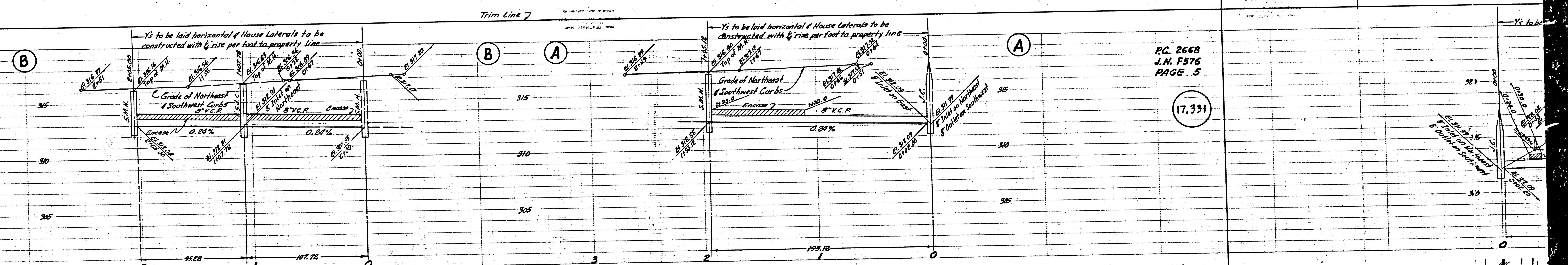


P.C. 2668
J.N.F576
PAGE 4

17,330

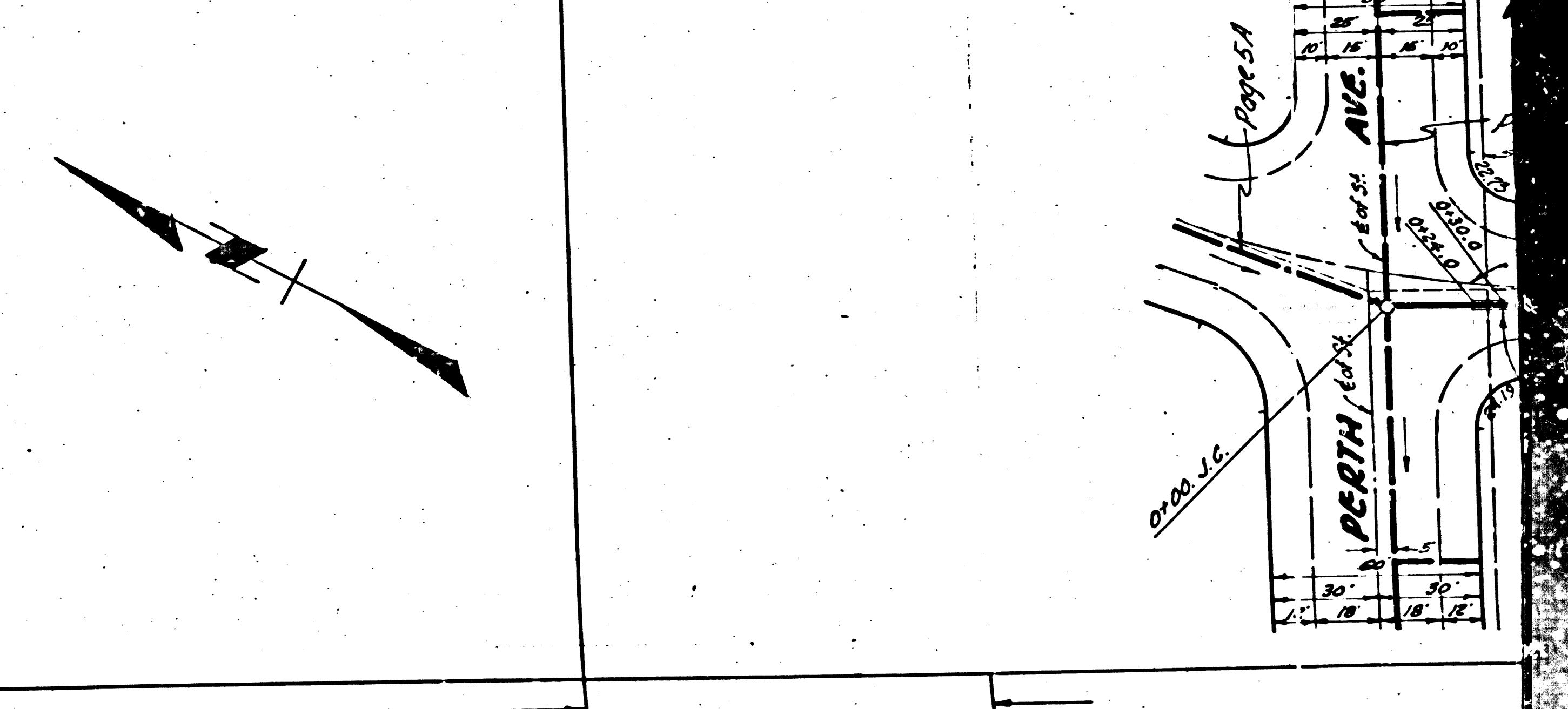
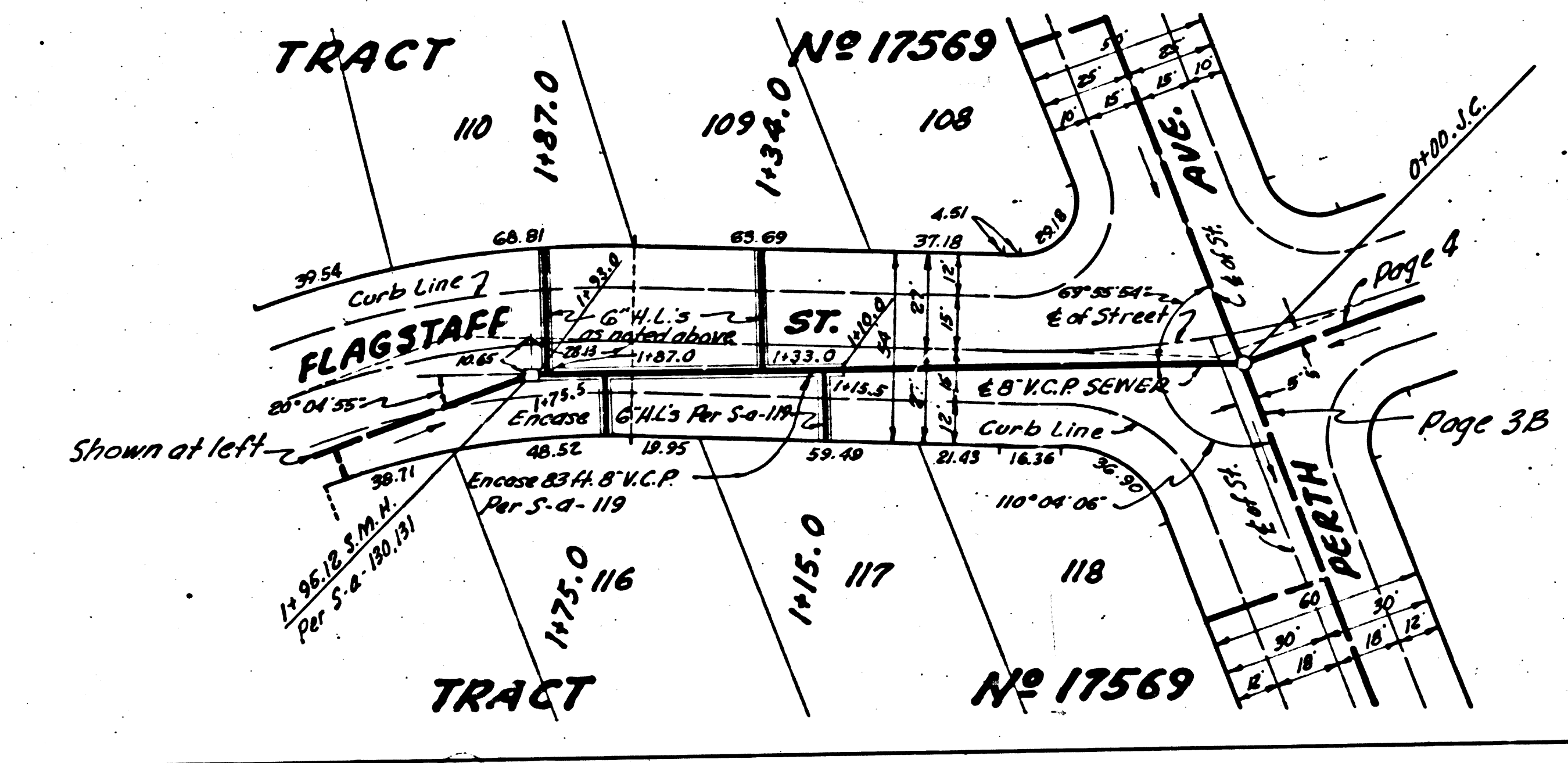
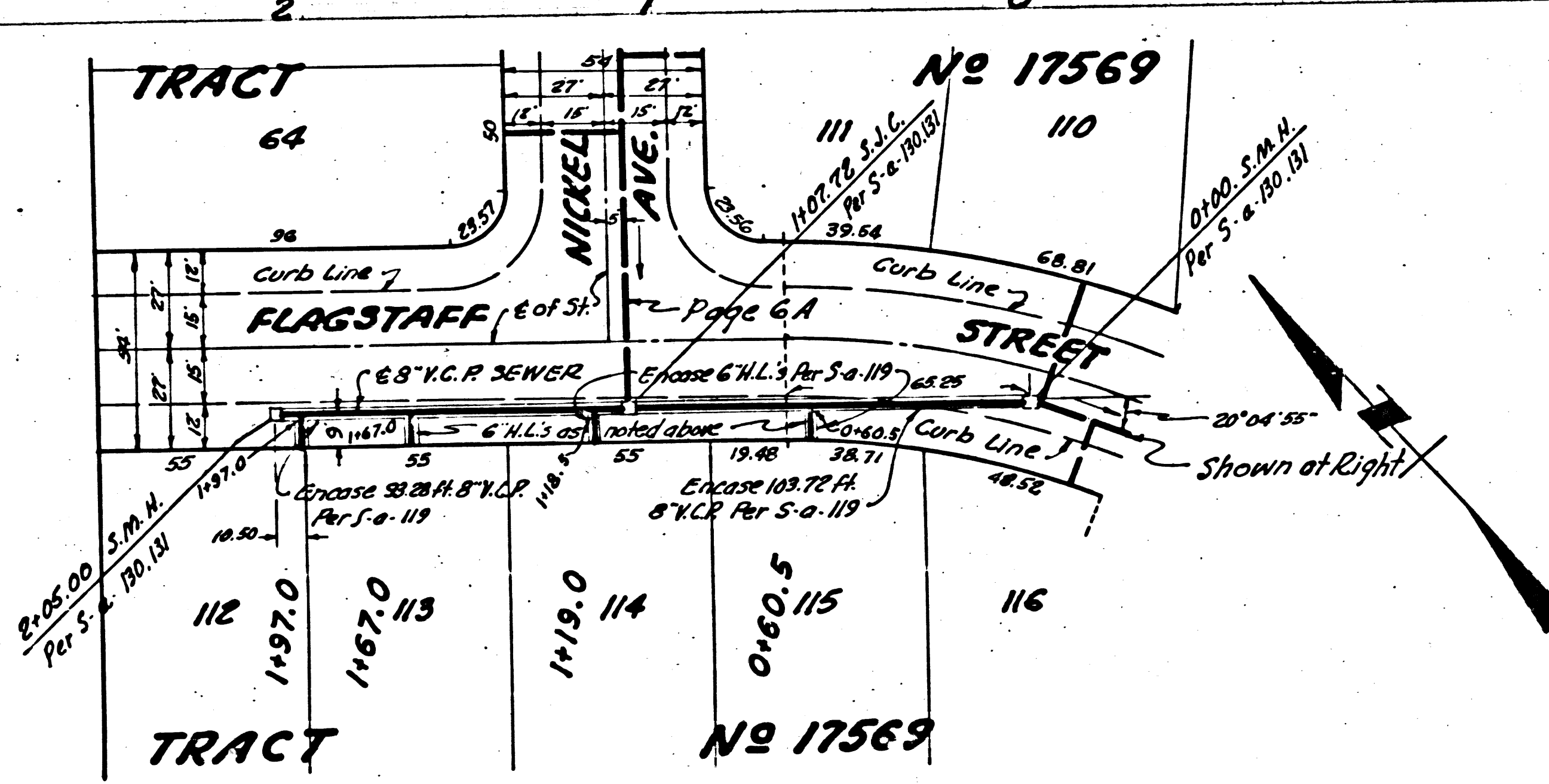


Trim Line (2)

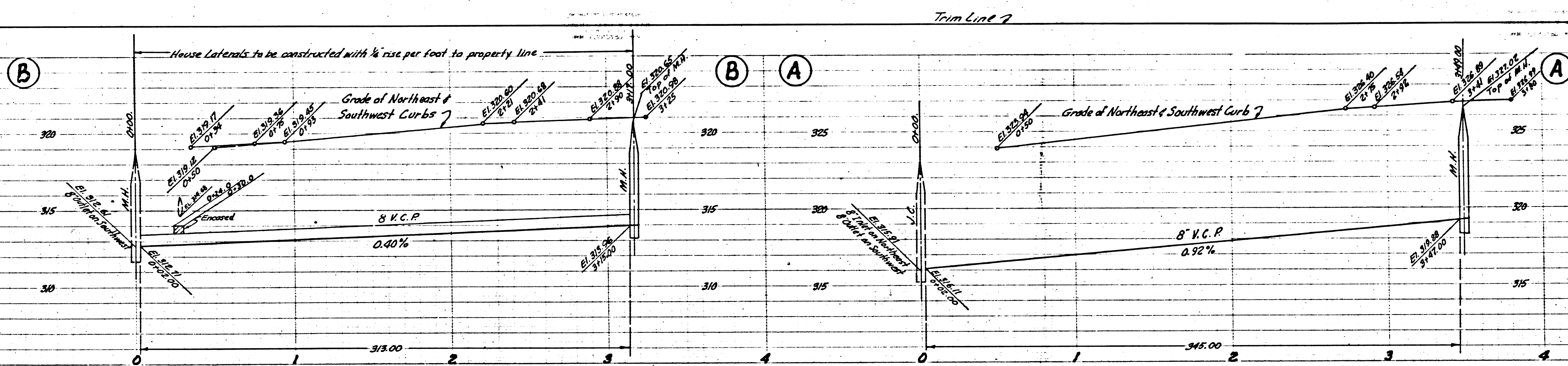


PC. 2668
J.N. F576
PAGE 5

17.331



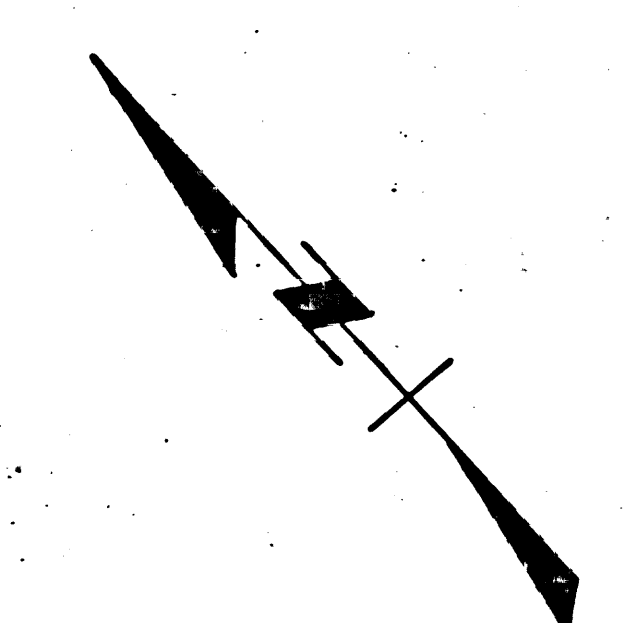
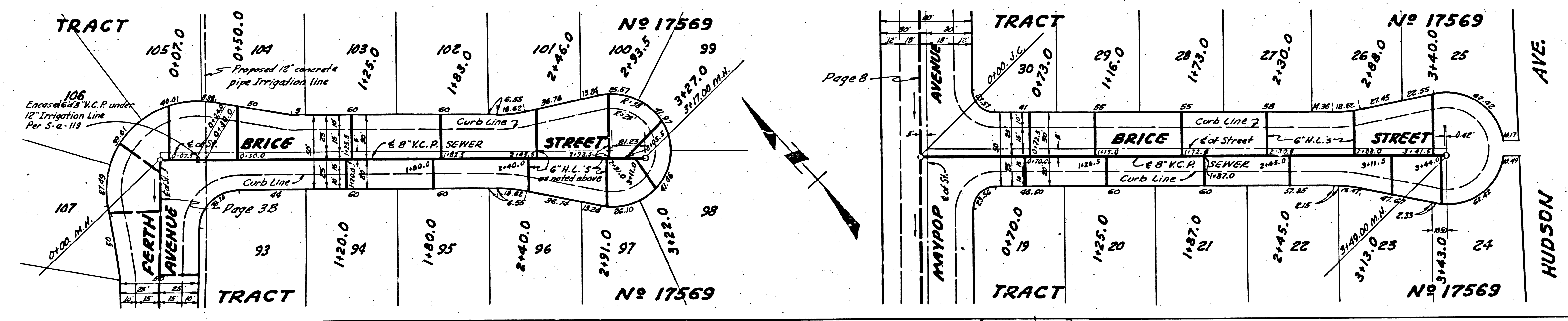
Trim Line
20



R.C. 2668
J.M. F576
PAGE 3

(17,335)

FE 2668

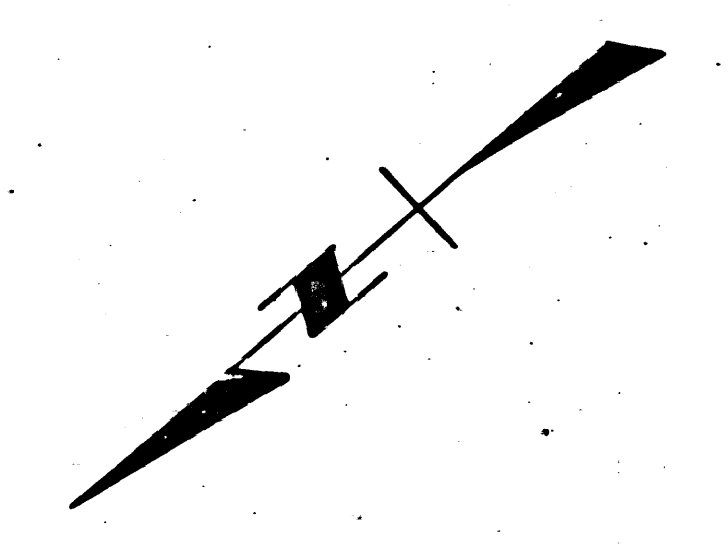
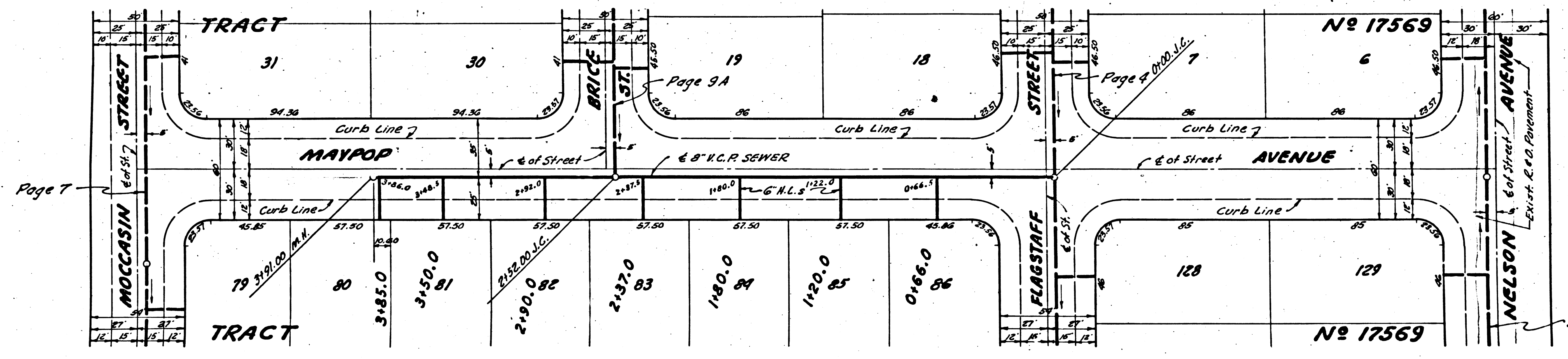
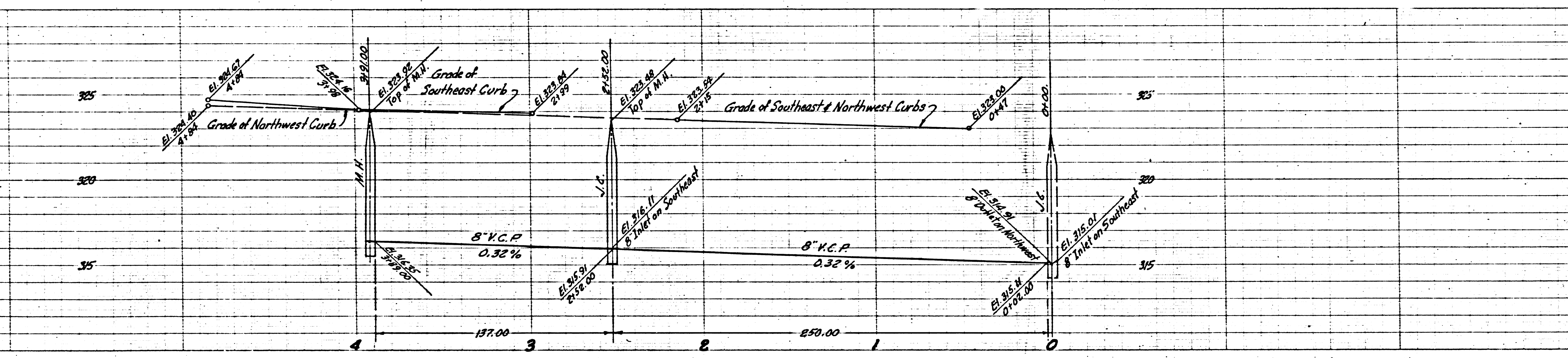


Trim Line

Trim Line 7

P.C. 2668
J.M. F576
PAGE 8

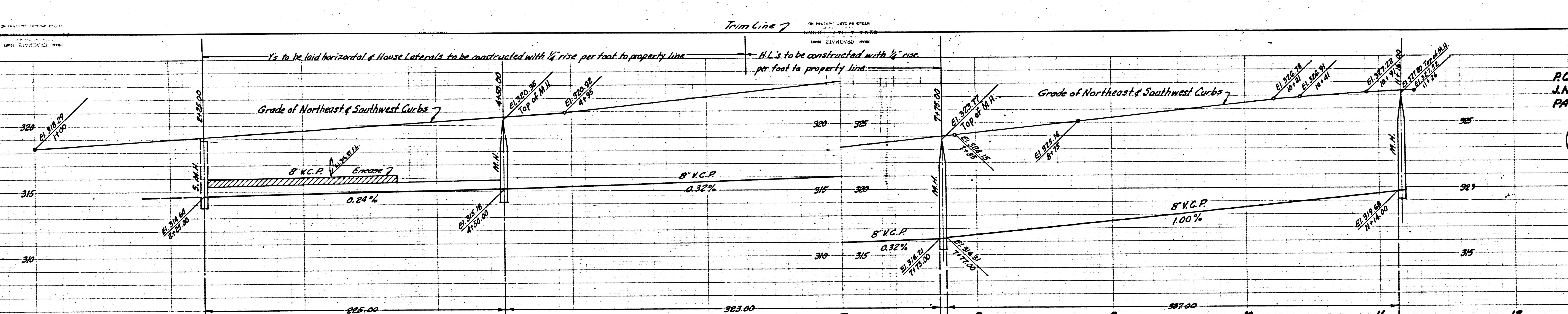
17,334



Trim Line 7

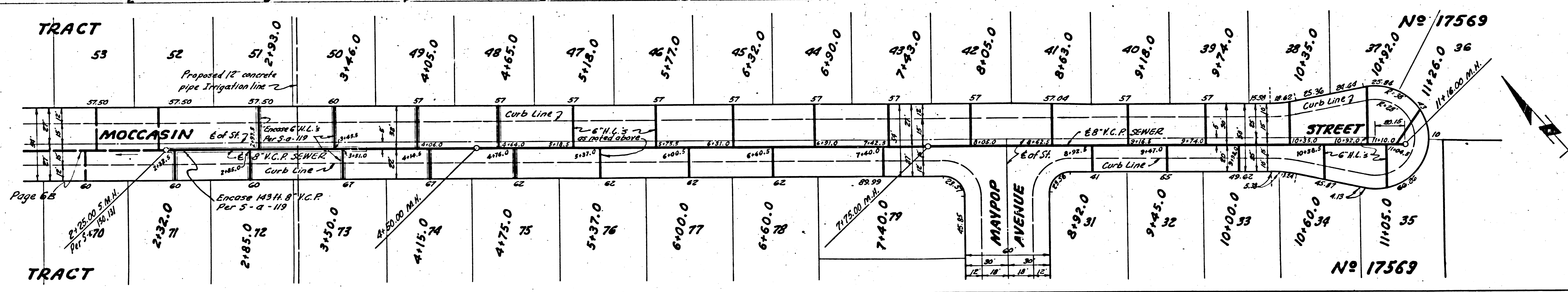
(7)





PC. 2668
J.N. F. 576
PAGE 7

17,333



Page 6B

Trim Line 7

No. 17569

