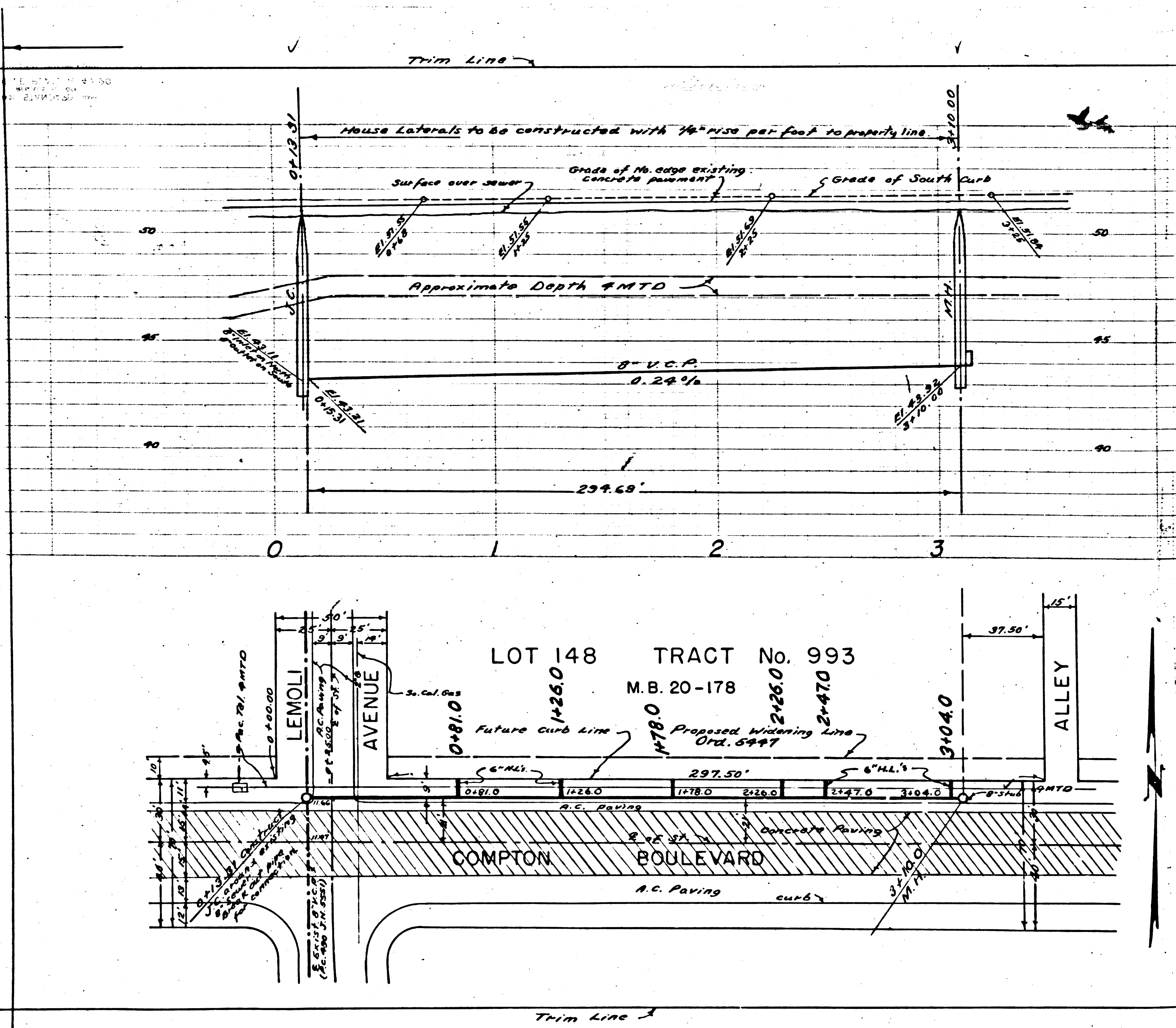


COMPTON BOULEVARD
P.C. 2669
J.N. F577



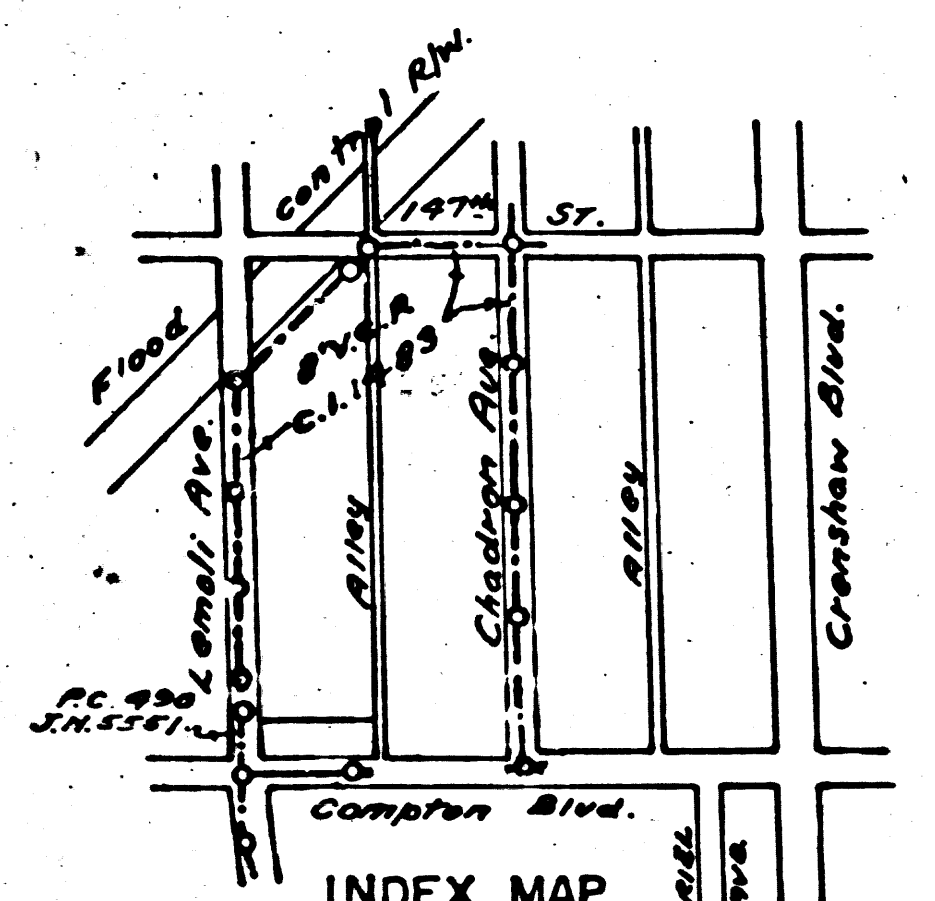
LENNOX BLDG. DIST. - 7

BENCH MARK: Lead and tack North curb of Compton Blvd. ± 41' E. of center line of Yukon ± 3' E. of driveway to school yard. S.Y.B.M. 2835 ELEV. 49.332

1. USE STANDARD MANHOLE FRAME AND COVER, S-a-117.
2. USE STANDARD STRENGTH PIPE. (EXCEPT AS NOTED).
3. USE CEMENT MORTAR FOR ALL VITRIFIED CLAY PIPE JOINTS.
4. RESURFACE ALL TRENCH WITHIN PAVED AREA TO MEET LOS ANGELES COUNTY ROAD DEPT. OR CALIFORNIA STATE HIGHWAY REQUIREMENTS IN ACCORDANCE WITH PERMIT.
5. HOUSE LATERALS TO BE CONSTRUCTED WITH INVERTS AT PROPERTY LINE 6" BELOW CURB GRADE EXCEPT AS NOTED.
6. ENCASE FOUR FEET OF SEWER AT POINTS OF INTERFERENCE WITH POLES AS PER S-a-119.
7. ALL STRUCTURES SHALL BE BRICK SEWERS, S-a-104.
8. FOR ALLOWABLE LEAKAGE TEST, USE FORMULA No. 1, SPEC'S., SEC. 31.

NOTE: No representative of the County Engineer will survey or layout any portion of the work. The owner or his authorized representative shall furnish the County Engineer with grade sheets and stations of all house laterals and Y branches and shall provide stakes for them at their proper locations with stationing plainly marked. Any change of location shall be requested in writing by the owner or his representative. No revisions shall be made in these plans without approval of the County Engineer.

NOTE: Provide stakes on the property lines or property lines produced, at right angles to the sewer line at the center line of each manhole.



P.C. 2669 J.N. F577 checked 8-5-53 *W. H. H. H.*

PROFILE, ALIGNMENT AND GRADE OF
SANITARY SEWERS
TO BE CONSTRUCTED IN

COMPTON BOULEVARD
FROM LEMOLI AVE. TO 295'± EASTERLY

PRIVATE CONTRACT NO. 2669
W.S. 25
SHEET 1 OF 1 SHEET
SCALE: VERTICAL 1" = 4'
HORIZONTAL 1" = 40'
APRIL, 1953

PREPARED IN THE OFFICES OF
GLEN ROOD, Registered Engineer
BY *Glen Rood*
REG. C.E. NO. 2093
FOR LEGEND
SEE PLAN NO. S-a-64

NOTE: Grades to which this improvement is to be constructed are shown on Plans and Profile. Grade points for top of curb, center line of street or center line of alley are shown by circles on profiles. All points between designated points the grade shall be established so as to conform to a straight line drawn between said designated points. Elevations are in feet above U.S.G.S. Datum or mean sea level. Work shall be constructed according to Specifications on file in the office of the County Engineer and shall be prosecuted only in the presence of the County Engineer. Before work can be started, the contractor must obtain a permit to excavate in county streets from the L.A. County Road Department, 108 W. 2nd Street, and make a deposit with the County Engineer, 735 L.A. County Engineering Bldg., sufficient to cover the cost of construction inspection and record plans. If work is to be done in a State Highway, a permit must be obtained from the State of California, Division of Highways, 120 So. Spring Street after making the deposit with the County Engineer. Approval of this plan by the County of Los Angeles does not constitute a representation as to the accuracy of the location of, or the existence or non-existence of, any underground utility, pipe or structure within the limits of this project.

COUNTY OF LOS ANGELES, CALIFORNIA
WILLIAM J. FOX - COUNTY ENGINEER
A.M. RAWN
CHIEF ENGINEER COUNTY SANITATION DISTRICT NO. 5
APPROVED BY *W. H. H. H.*
CHECKED BY *Robert E. Kubie* OFFICE OF COUNTY ENGINEER, REV. C.E. NO. 7260 DATE 4-1-53

P.C. 2669
J.N. F577
PAGE 1

(16,869)

COMPTON BOULEVARD

J.N. F577
P.C. 2669

RECEIVED
JUN 1953