

LENNOX BLDG. DIST. #7

SY 1100 - Elev. 50.970 - C.S. Mon. Terrace K1
per C.S.F.B. 925-103 W & Sec. Cor. Sec. 22
P.I. Prairie & Compton Blvd.

Sheet No	Pages
1	1-4
2	5-8

- NOTE:
NO REPRESENTATIVE OF THE COUNTY ENGINEER WILL SURVEY OR LAY OUT ANY PORTION OF THE WORK.
THE OWNER OR HIS AUTHORIZED REPRESENTATIVE SHALL FURNISH THE COUNTY ENGINEER WITH GRADE SHEETS AND STATIONS FOR ALL HOUSE LATERALS AND Y BRANCHES AND SHALL PROVIDE STAKES FOR THEM AT THEIR PROPER LOCATIONS WITH STATIONING PLAINLY MARKED. ANY CHANGE OF LOCATION SHALL BE REQUESTED IN WRITING BY THE OWNER OR HIS REPRESENTATIVE.
NO REVISIONS SHALL BE MADE IN THESE PLANS WITHOUT APPROVAL OF THE COUNTY ENGINEER.
1. USE STANDARD MANHOLE FRAMES AND COVERS, S-4-117, EXCEPT AS NOTED.
 2. USE STANDARD STRENGTH PIPE EXCEPT AS NOTED.
 3. USE CEMENT MORTAR FOR ALL VITRIFIED CLAY PIPE JOINTS.
 4. RESURFACE ALL TRENCH WITHIN PAVED AREA TO MEET L.A. COUNTY ROAD DEPT. REQUIREMENTS, IN ACCORDANCE WITH PERMIT FOLS. 5-119.
 5. ENCASE FOUR FEET OF SEWER AT POINTS OF INTERFERENCE WITH POLES, 5-119.
 6. HOUSE LATERALS TO BE CONSTRUCTED WITH INVERT AT PROPERTY LINE 6 FEET BELOW CURB GRADE, EXCEPT AS NOTED.
 7. ALL STRUCTURES SHALL BE BRICK SEWER STRUCTURES, S-4-104, EXCEPT AS NOTED.
 8. PROVIDE STAKES ON THE PROPERTY LINES OR PROPERTY LINES PRODUCED AT RIGHT ANGLES TO THE SEWER LINE AT THE CENTER LINE OF EACH MANHOLE.
 9. FOR ALLOWABLE LEAKAGE TEST USE FORMULA #1 SPEC. SEC. 51.

PROFILE, ALIGNMENT AND GRADE OF
SANITARY SEWERS
TO BE CONSTRUCTED IN
TRACT N° 18963
PRIVATE CONTRACT NO. 2671
W. S. 25
SHEET 1 OF 2 SHEETS
SCALE: VERT. 1" = 4'
HOR. 1" = 40'
MAY 1953
PREPARED IN THE OFFICES OF
ENGINEERING SERVICE CORPORATION

P.C. 2671
J.N.- F-579
Page 1

16,907

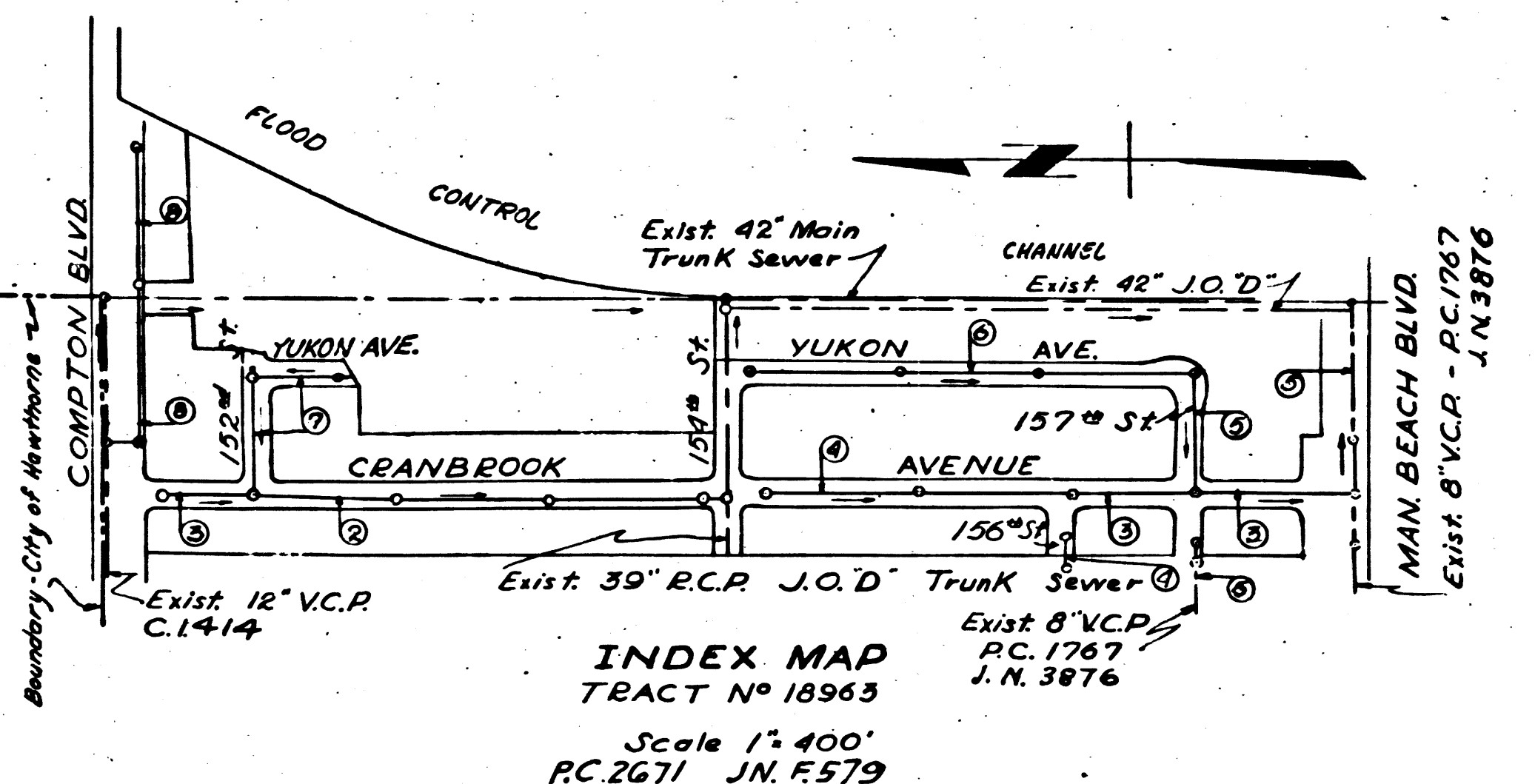
BY E. P. DeLong
116 C. L. NO. 1097

FOR LEGEND
SEE PLAN NO. S-4-66

NOTE:
GRADES TO WHICH THIS IMPROVEMENT IS TO BE CONSTRUCTED ARE SHOWN ON PLANS AND PROFILES. GRADE POINTS FOR TOP OF CURB, CENTER LINE OF STREETS, OR CENTER LINE OF ALLEY ARE SHOWN BY CIRCLES ON PROFILES. AT ALL POINTS BETWEEN DESIGNATED POINTS THE GRADE SHALL BE ESTABLISHED SO AS TO CONFORM TO A STRAIGHT LINE DRAWN BETWEEN SAID DESIGNATED POINTS. ELEVATIONS ARE IN FEET ABOVE U.S.G.S. DATUM OR MEAN SEA LEVEL.
THIS DRAWING AND THE DATA HEREON ARE HEREBY MADE A PART OF THE SPECIFICATIONS.
WORK SHALL BE CONSTRUCTED ACCORDING TO SPECIFICATIONS ON FILE IN THE OFFICE OF THE COUNTY ENGINEER AND SHALL BE PROSECUTED ONLY IN THE PRESENCE OF THE COUNTY ENGINEER.
BEFORE WORK CAN BE STARTED THE CONTRACTOR MUST OBTAIN A PERMIT TO EXCAVATE IN COUNTY STREETS FROM THE L.A. COUNTY ROAD DEPT. 100 W. 2ND ST. AND MAKE A DEPOSIT WITH THE COUNTY ENGINEER'S COUNTY ENGINEERING BUILDING SUFFICIENT TO COVER THE COST OF CONSTRUCTION INSPECTION AND RECORD PLANS.
APPROVAL OF THIS PLAN BY THE COUNTY OF LOS ANGELES DOES NOT CONSTITUTE A REPRESENTATION AS TO THE ACCURACY OF, OR THE EXISTENCE OR NON-EXISTENCE OF, ANY UNDERGROUND UTILITY, PIPE, OR STRUCTURE WITHIN THE LIMITS OF THIS PROJECT.

RECEIVED
JUL 20 1953
L.A. COUNTY ENGINEER

before breaking into any existing structure
and before final acceptance of this work,
County Sanitation District should be notified
in order that required inspection may be made.



ENGINEERING SERVICE CORPORATION				
1127 W WASHINGTON BLVD.				
LOS ANGELES 15 CALIF. PR. 7281				
REVISIONS				
DESIGNED BY	RLM			
CHECKED BY	KS			
SUB STRUCTURES C.K.C.				
W.O. NO.	DATE	SCALE	L.B.	F.B.
5950-32	MAY 1953	As Noted		

Checked 5-7-53 W. Warren

COUNTY OF LOS ANGELES, CALIFORNIA
WILLIAM J. FOX
COUNTY ENGINEER
APPROVED BY E. P. DeLong
CHIEF DEPUTY
A. M. RAWN
CHIEF ENGINEER OF COUNTY
SANITATION DISTRICT NO. 5
APPROVED BY Robert S. Kuhn
OFFICE ENGINEER
CHECKED BY Robert S. Kuhn
OFFICE OF COUNTY ENGINEER
116 C. L. NO. 7860

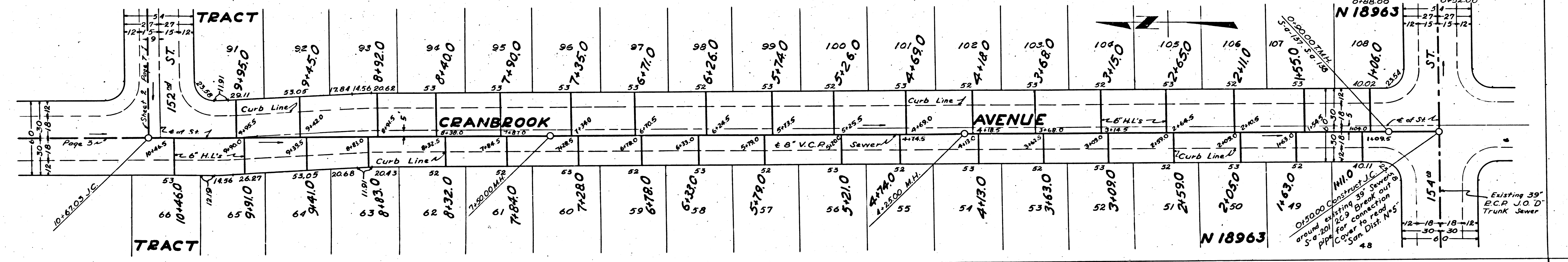
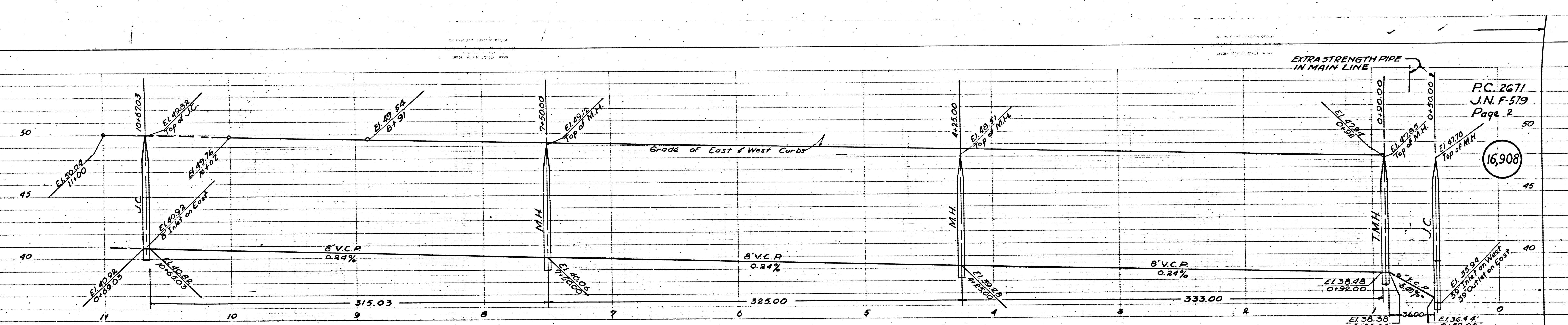
1

1

TRACT N° 18963

P.C. 2671

R.L.



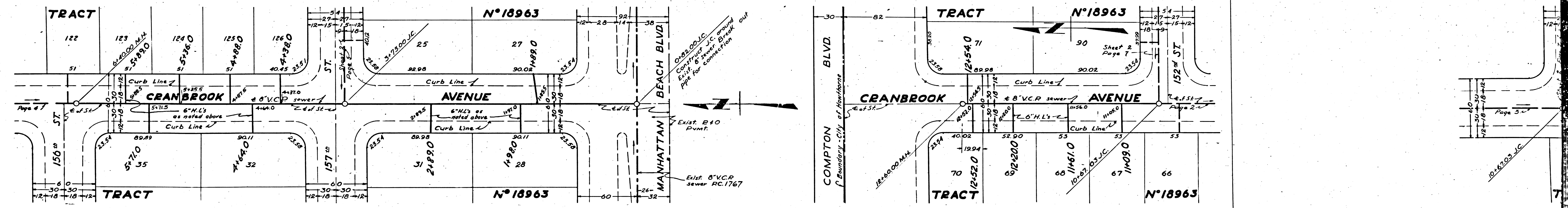
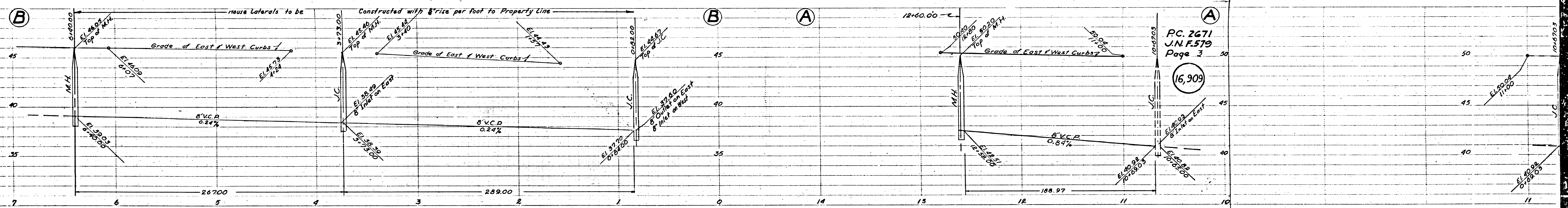
P.C. 2671
J.N.F-579
Page 2

16,908

N 18963

N 18963

Authority: City of Hawthorne
CONSULTING ENGINEER

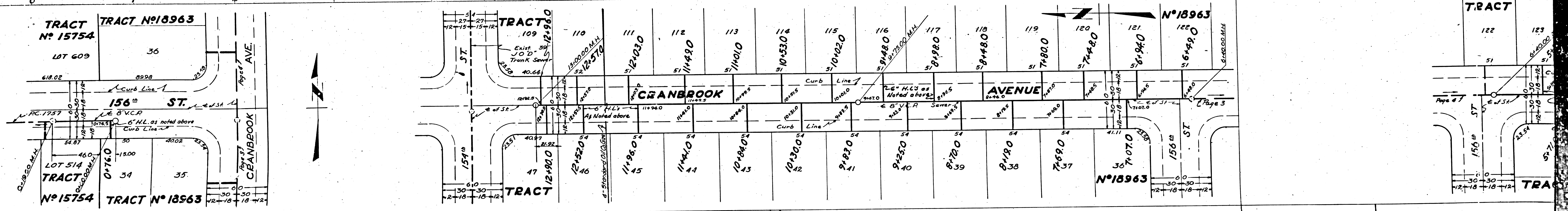
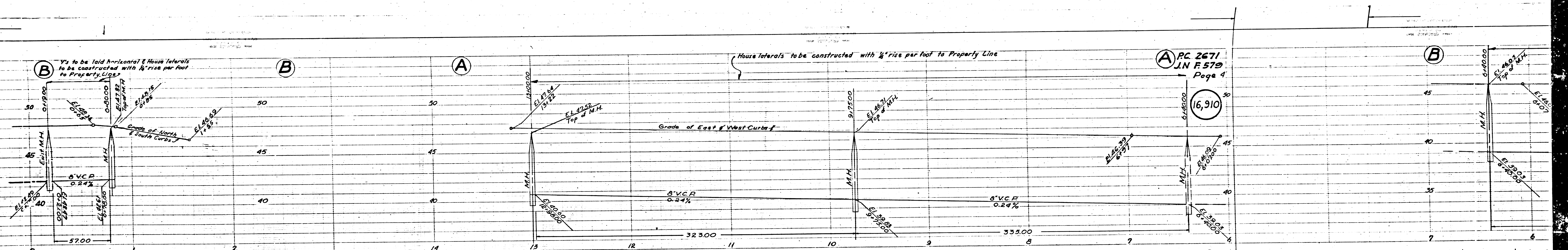


PC. 2671
J.N. F. 579
Page 3

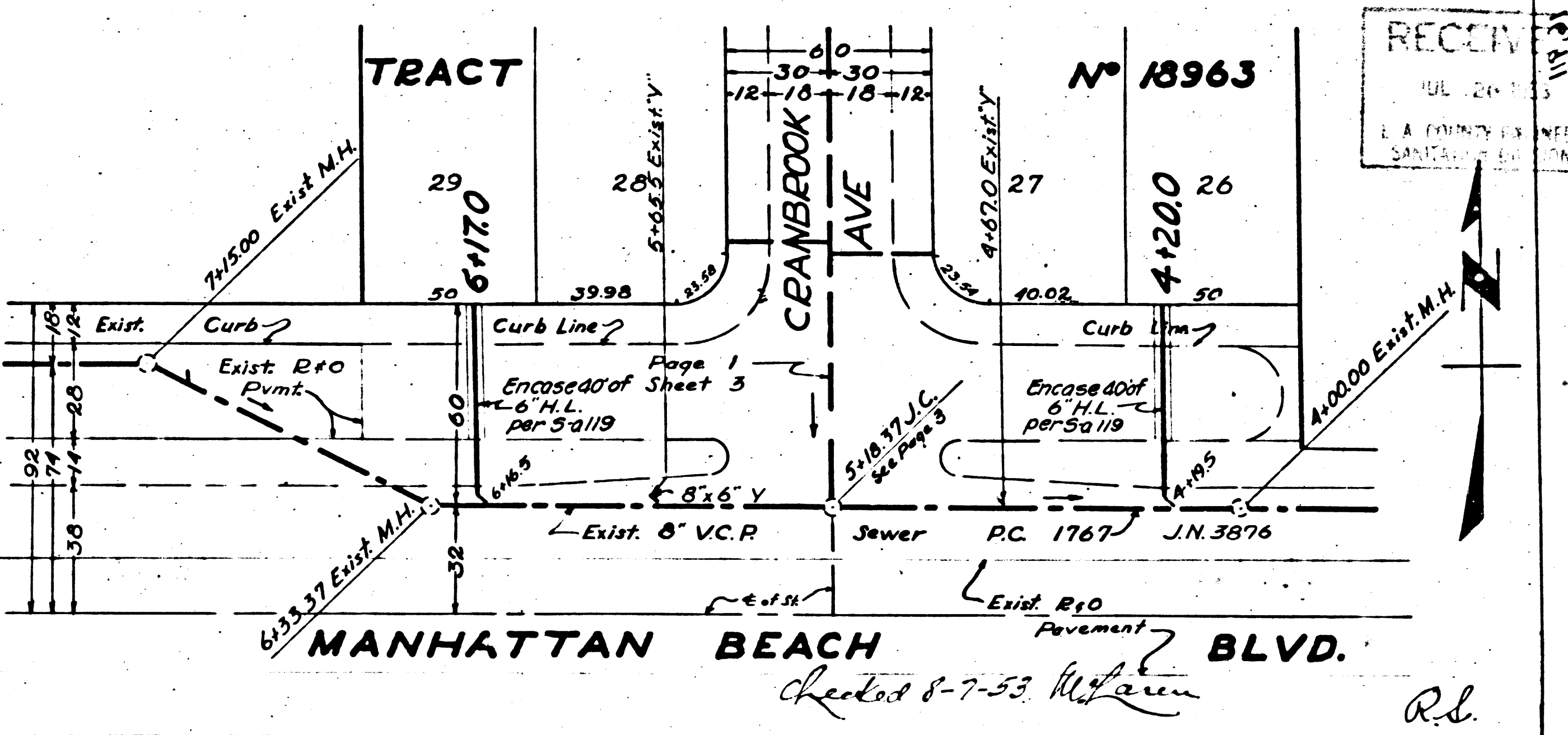
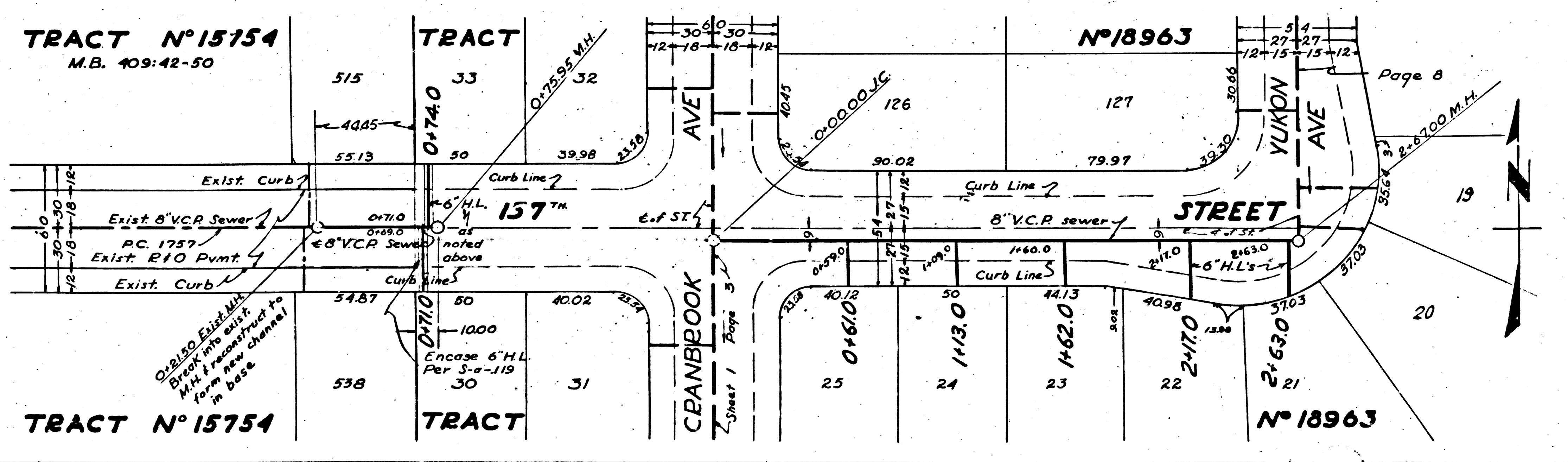
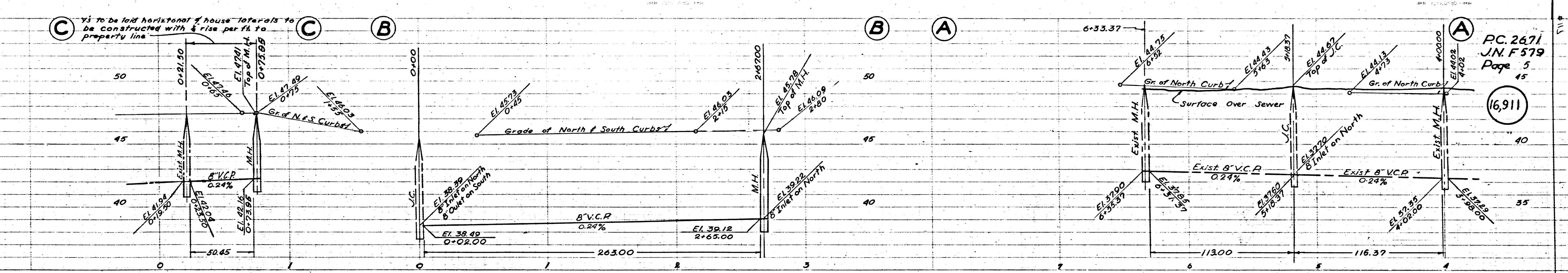
(16,909)

Sheet 2
Page 7

Page 3



2671
-579
6



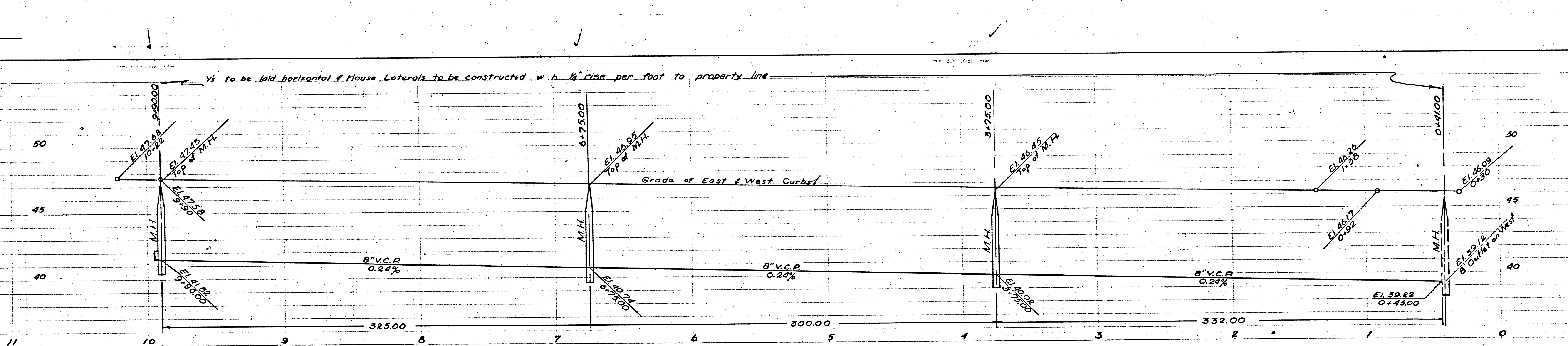
RC 2671
J.N. F 579
Page 5

(16,911)

RECORDED
JUL 26 1931
SANTANA

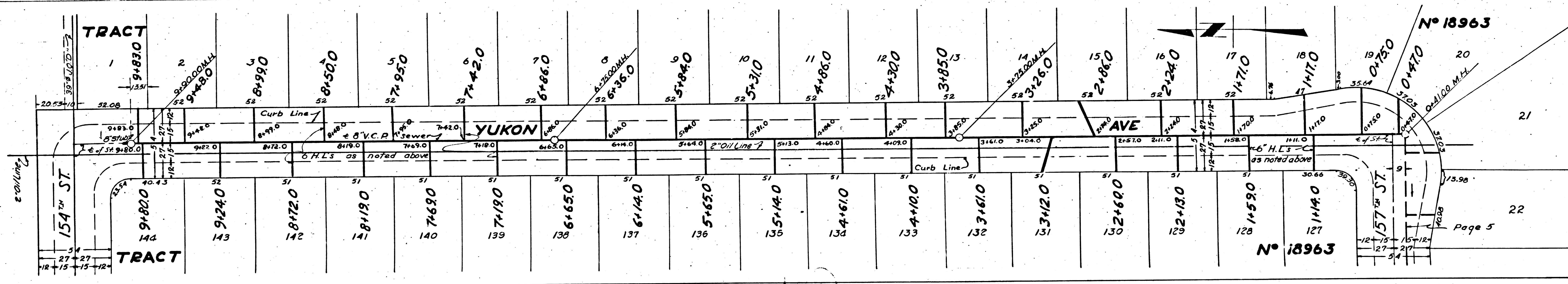
RC 5831
J.N. F 579
15 18932

R.B.



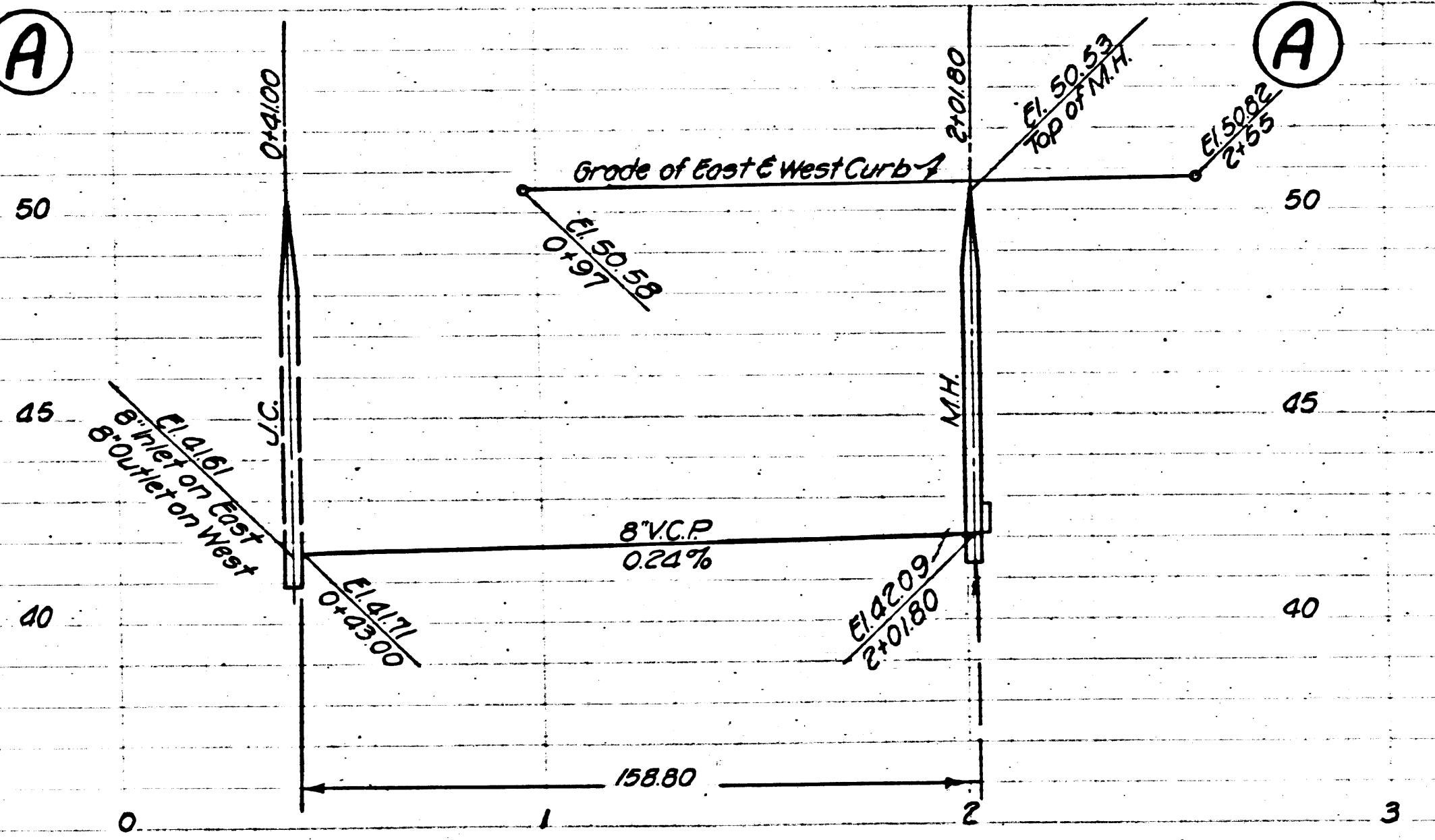
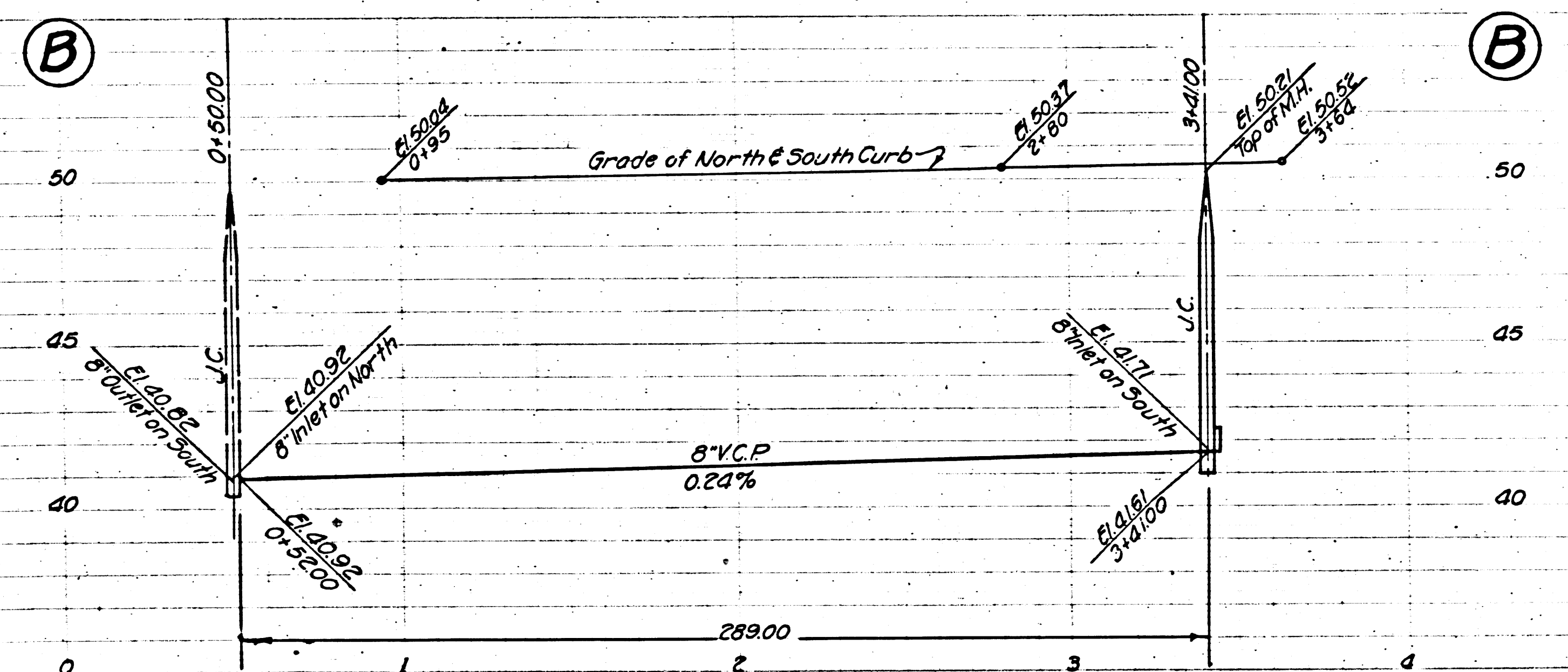
PC. 2671
 J.N.F 579
 Page 6

16,912



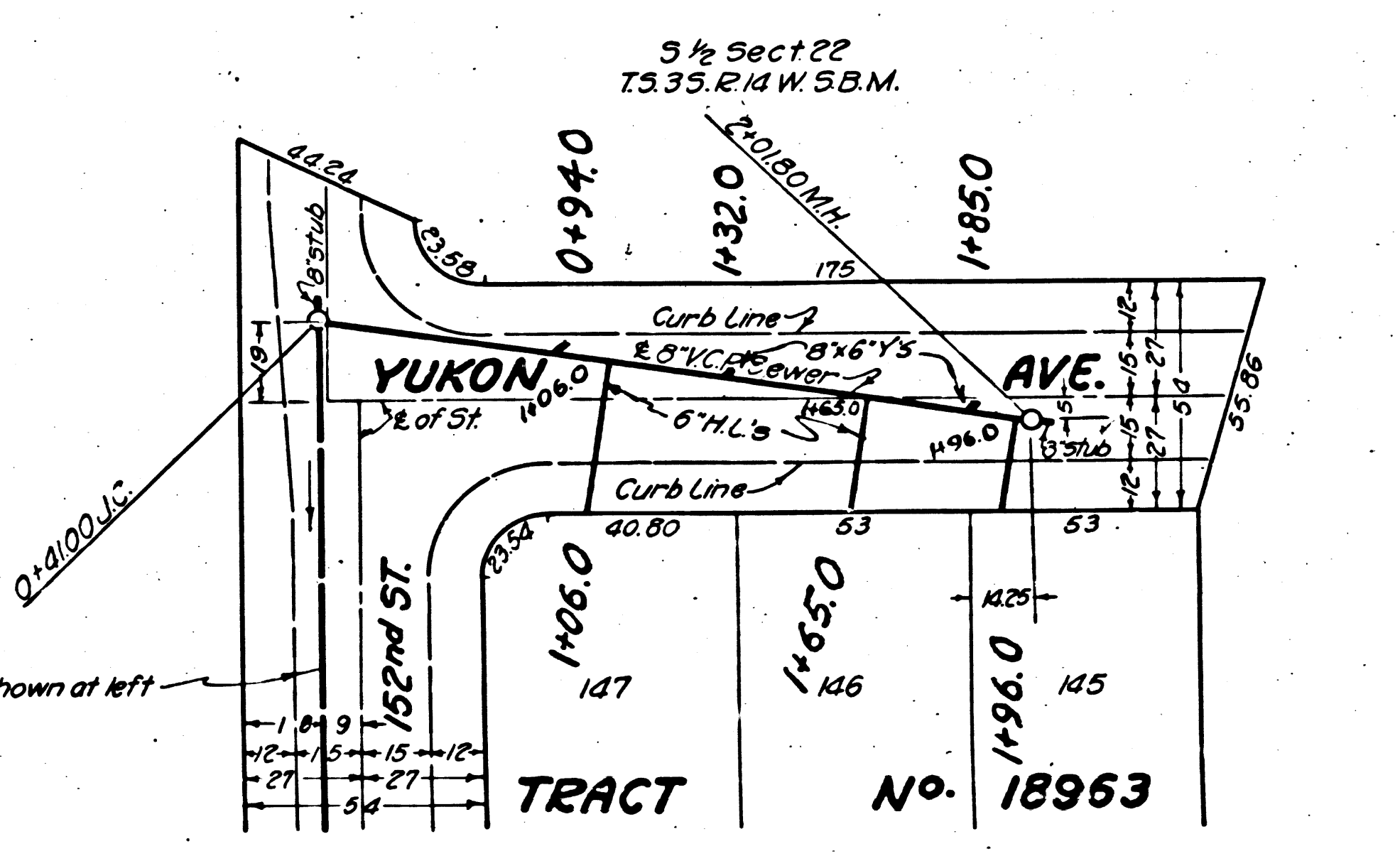
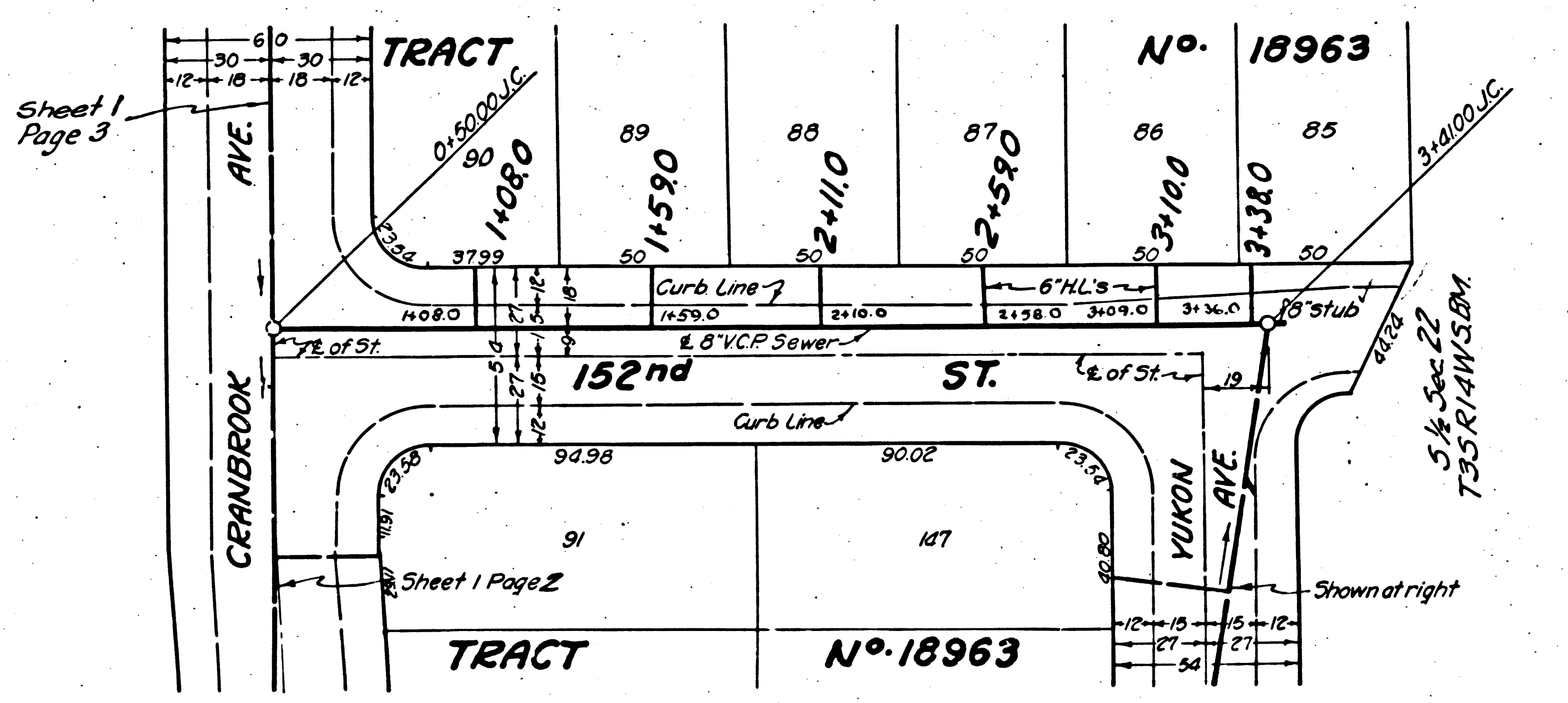
N° 18963

Page 5



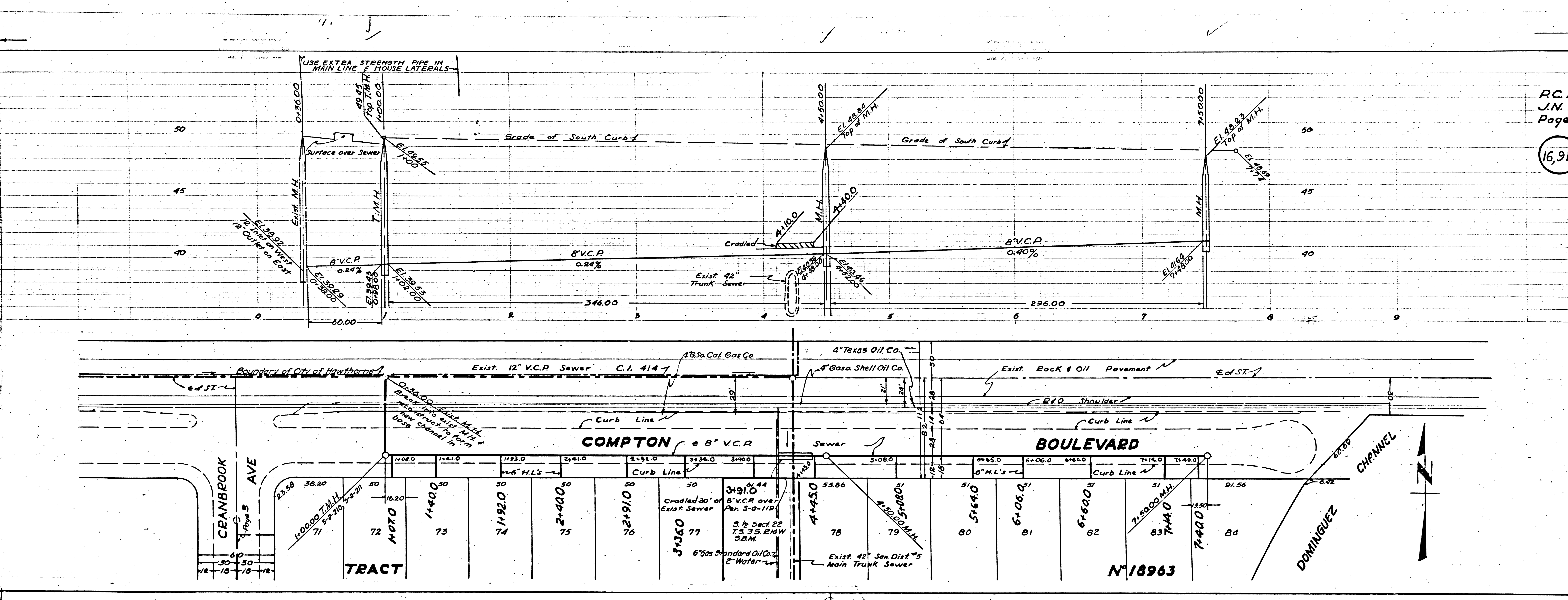
PC 2671
J.N.F.579
PAGE 7

16,913



Trim Line

PC 2671
17531 17532
17533 17534
COMPTON BLVD
CRANBROOK AVE
235W2 MAZ



PC 2671
J.N. F 579
Page 3

16,914