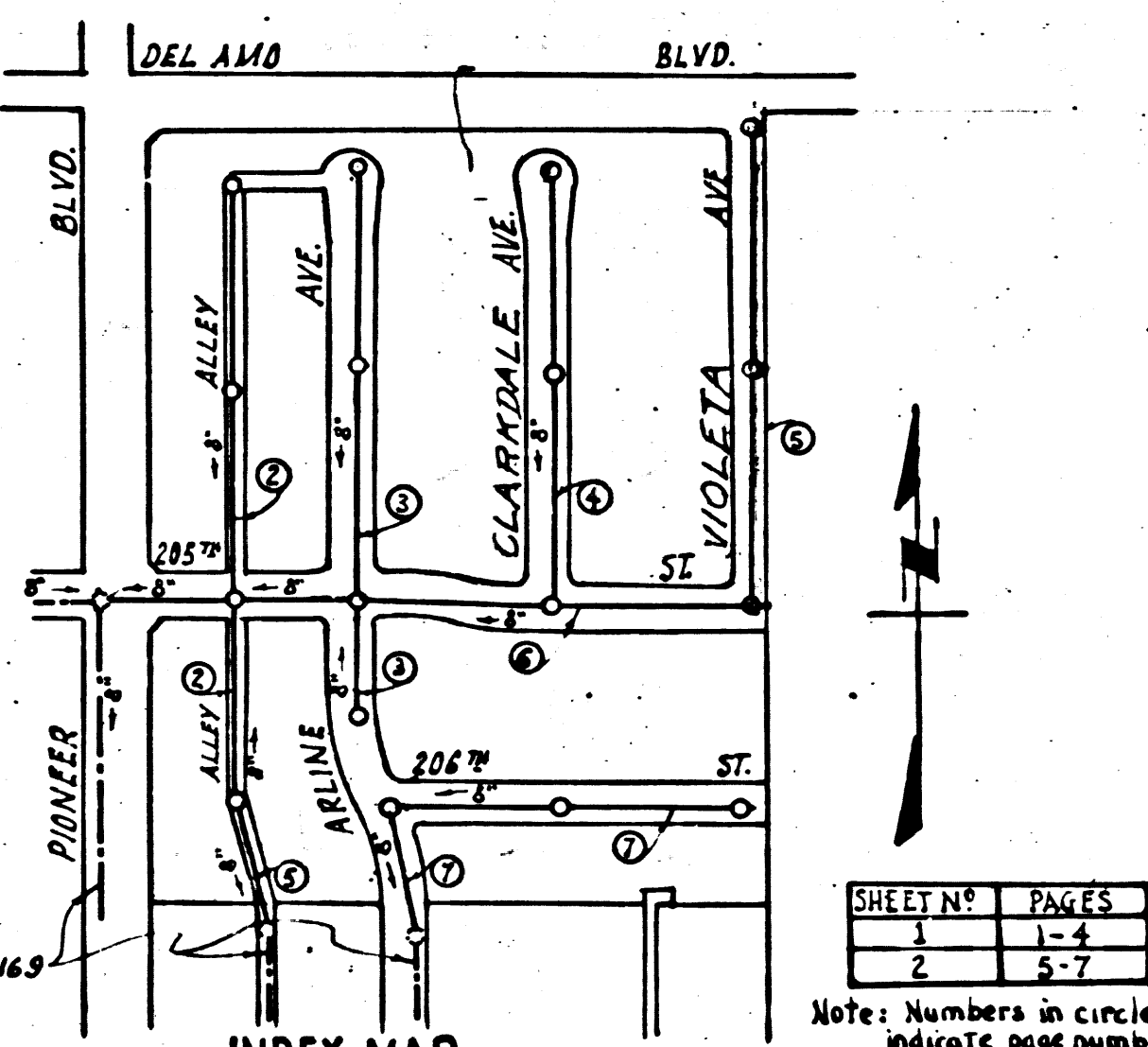


S.M. SY. 491, 1915, Elevation + 18.222, Co. Road Dept. P.A. 391, N. 4  
 PIONEER BLVD. & DEL AMO ST., N.W. Cor.  
 Con. Monument, 30" deep.

**BELLFLOWER BLDG. DIST. N° 4**

1. Use standard manhole frame and cover, 5-a-117, Except as noted.
2. Use standard strength pipe, except as noted.
3. Use joint compound for all vitrified clay pipe joints, per Spec's, Sec. 31
4. Resurface all trench within paved area to meet L.A. County Road Dept. requirements in accordance with permit.
5. Encase four feet of sewer at points of interference with poles as per 5-a-118.
6. House laterals to be constructed with invert at property line 5 feet below curb grade, except as noted.
7. All structures shall be brick sewer structures 5-a-104, except as noted.
8. For allowable leakage test, use formula No. 2, except as noted.

**Note:**  
 No representative of the County Engineer will survey or lay out any portion of the work.  
 The owner or his authorized representative shall furnish the County Engineer with Grade Sheets and stations of all House laterals and Y branches and shall provide stakes for them at their proper locations with stationing plainly marked. Any change of location shall be requested in writing by the owner or his representative.  
 No revisions shall be made in these plans without approval of the County Engineer.  
 Provide signs on the property lines or property lines produced at right angles to the sewer line at the center line of each manhole.



INDEX MAP  
 SCALE: 1" = 200'  
 TRACT N° 17152  
 P.C. 2691 J.N.F. 605

Approved 9-22-53  
 Lot Line revision  
 H.L. Smelton

Linked 10-16-53 McLean

PROFILE, ALIGNMENT, AND GRADE OF  
**SANITARY SEWERS**  
 TO BE CONSTRUCTED IN  
**TRACT N° 17152**

P.C. 2691  
 J.N.F. 605  
 PAGE 1

(17.221)

**PRIVATE CONTRACT N° 2691**  
 W. 5.31  
 SHEET 1 OF 2 SHEETS

SCALE: VERT. 1" = 4'  
 HORIZ. 1" = 40'  
 MAY 1953  
 PREPARED IN THE OFFICE OF  
**FREDERICK C. STILSON**  
 BY *Frederick C. Stilson*  
 REG. C.E. NO. 1670

**NOTE:**  
 GRADES TO WHICH THIS IMPROVEMENT IS TO BE CONSTRUCTED ARE SHOWN ON PLANS AND PROFILES.  
 GRADE POINTS FOR TOP OF CURB, CENTER LINE OF STREET OR CENTER LINE OF ALLEY ARE SHOWN BY CIRCLES ON PROFILE. AT ALL POINTS BETWEEN DESIGNATED POINTS, THE GRADE SHALL BE ESTABLISHED SO AS TO CONFORM TO A STRAIGHT LINE DRAWN BETWEEN SAID DESIGNATED POINTS. ELEVATIONS ARE IN FEET ABOVE U.S. G.S. DATUM (MEAN SEA LEVEL). THIS DRAWING AND THE DATA HEREON ARE HEREBY MADE A PART OF THE SPECIFICATIONS. WORK SHALL BE CONSTRUCTED ACCORDING TO SPECIFICATIONS ON FILE IN THE OFFICE OF THE COUNTY ENGINEER AND SHALL BE PROSECUTED ONLY IN THE PRESENCE OF THE COUNTY ENGINEER.  
 BEFORE WORK CAN BE STARTED, THE CONTRACTOR MUST OBTAIN A PERMIT TO EXCAVATE IN COUNTY STREETS FROM THE L.A. COUNTY ROAD DEPT., 108 W. 2<sup>ND</sup> ST., AND MAKE A DEPOSIT WITH THE COUNTY ENGINEER, 735 L.A. COUNTY ENGINEERING BLDG., SUFFICIENT TO COVER THE COST OF CONSTRUCTION INSPECTION AND RECORD PLANS.  
 APPROVAL OF THIS PLAN BY THE COUNTY OF LOS ANGELES DOES NOT CONSTITUTE A REPRESENTATION AS TO THE ACCURACY OF THE LOCATION OF, OR THE EXISTENCE OR NON-EXISTENCE OF, ANY UNDERGROUND UTILITY, PIPE, OR STRUCTURE WITHIN THE LIMITS OF THIS PROJECT. (THIS NOTE APPLIES TO ALL SHEETS)  
 IF WORK IS TO BE DONE IN A STATE HIGHWAY, A PERMIT MUST BE OBTAINED FROM THE STATE OF CALIFORNIA, DIVISION OF HIGHWAYS, 120 S. SPRING ST.

APPROVED: **WILLIAM J. FOX**  
 COUNTY ENGINEER  
 BY *W.J. Fox*  
 CHIEF DEPUTY

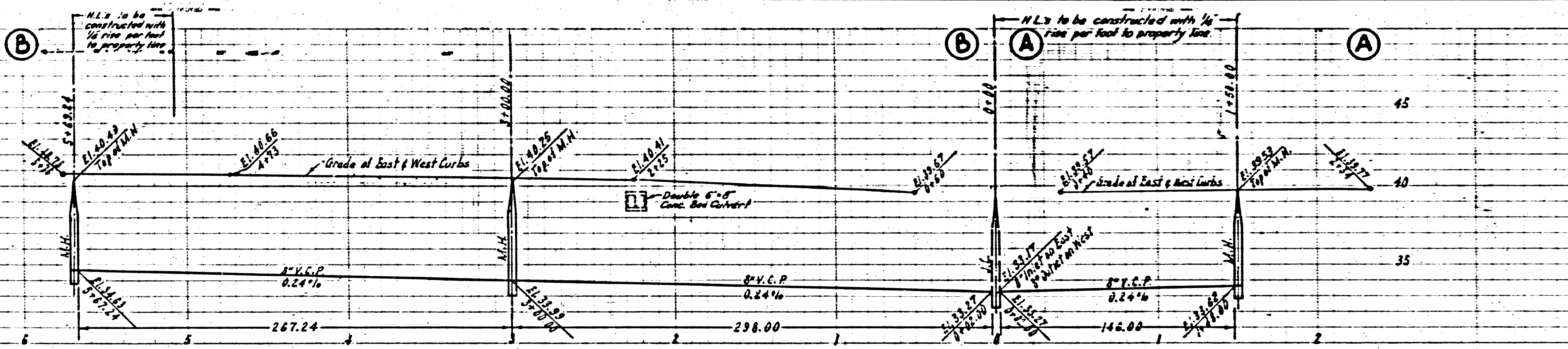
APPROVED: **A. M. RAWN**  
 CHIEF ENGINEER  
 SANITATION DISTRICT N° 19  
 BY *A.M. Rawn*  
 OFFICE ENGINEER

CHECKED BY: *Richard S. Kuhn* 8-14-53  
 OFFICE OF COUNTY ENGINEER, R.O. C.E. NO. 7860

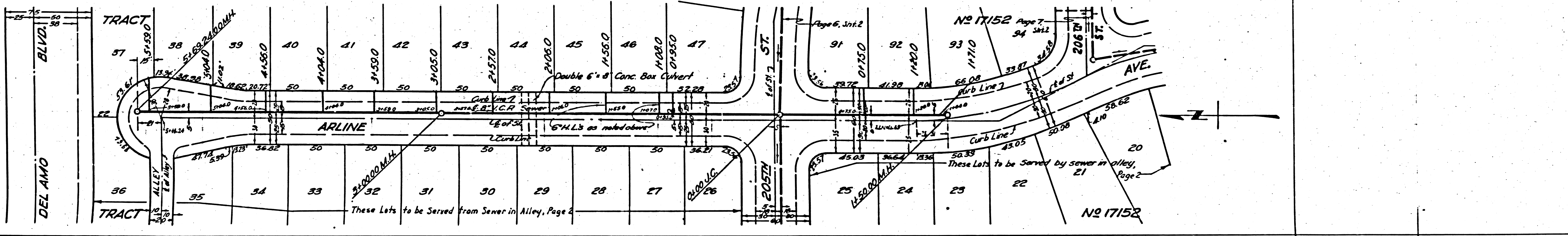
(REV. 1953)  
 (11-27-53)  
 B.C. Seal  
 BILLIE BIRD DIV. 4  
 TRACT 1611125  
 N.W. F. 602  
 17  
 45-0  
 877

(17)

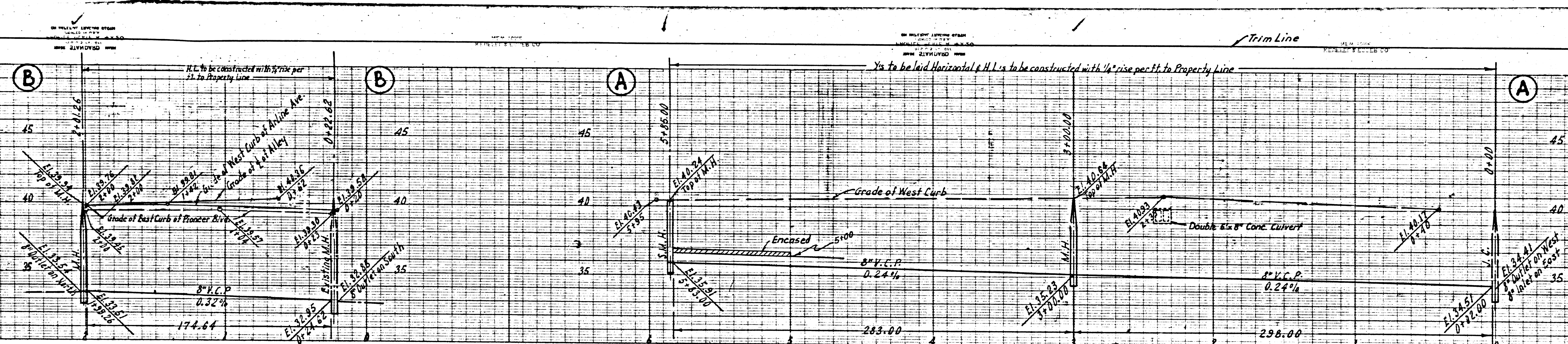




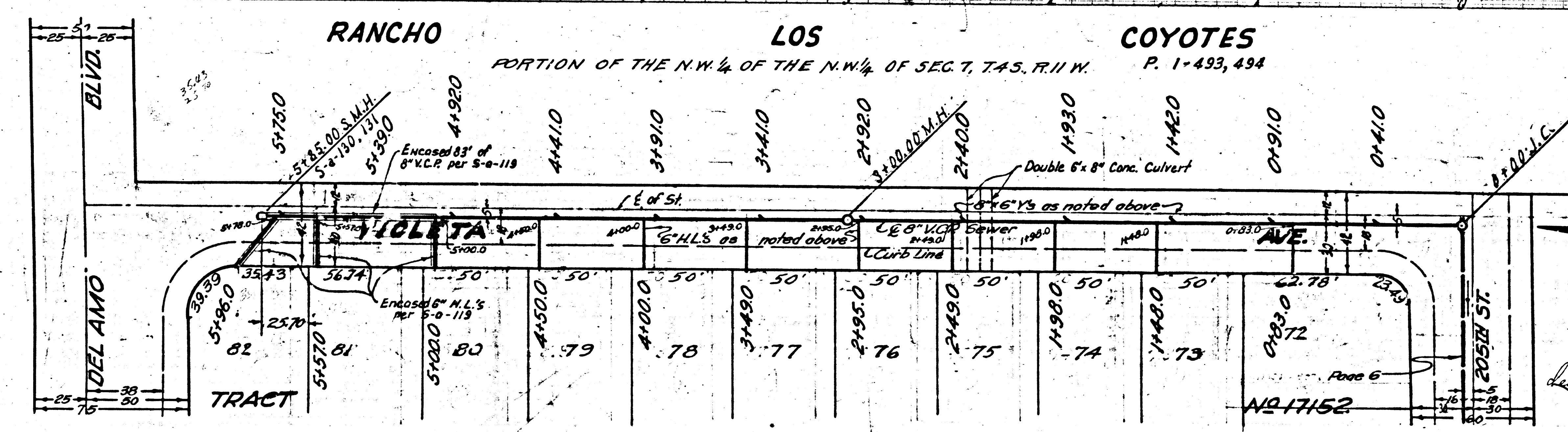
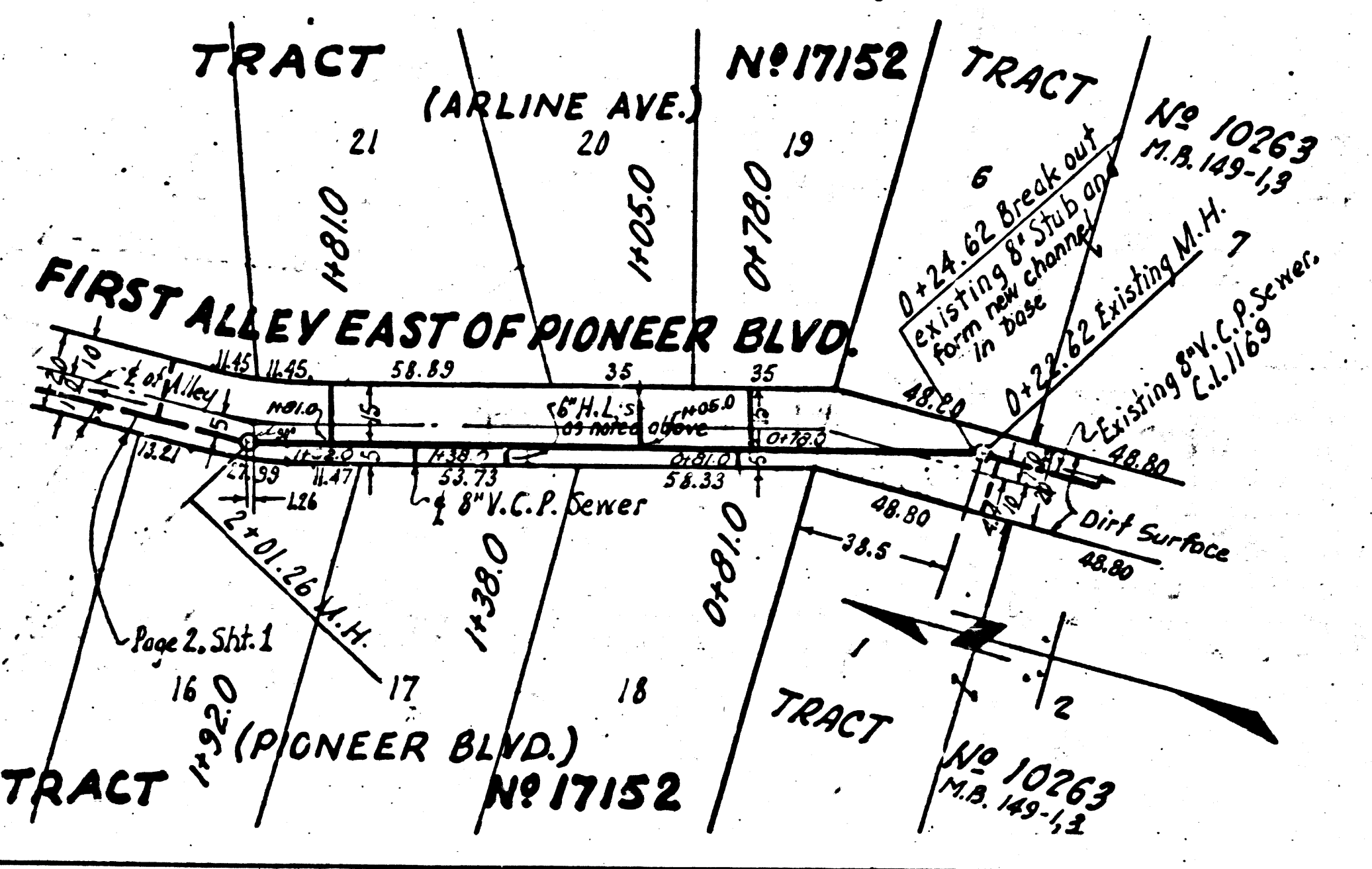
PC 2591  
 J.N.F. 605  
 PAGE 3  
 (17,223)



51  
205  
226



PC 2691  
J.N.F. 605  
PAGE 5  
17,225

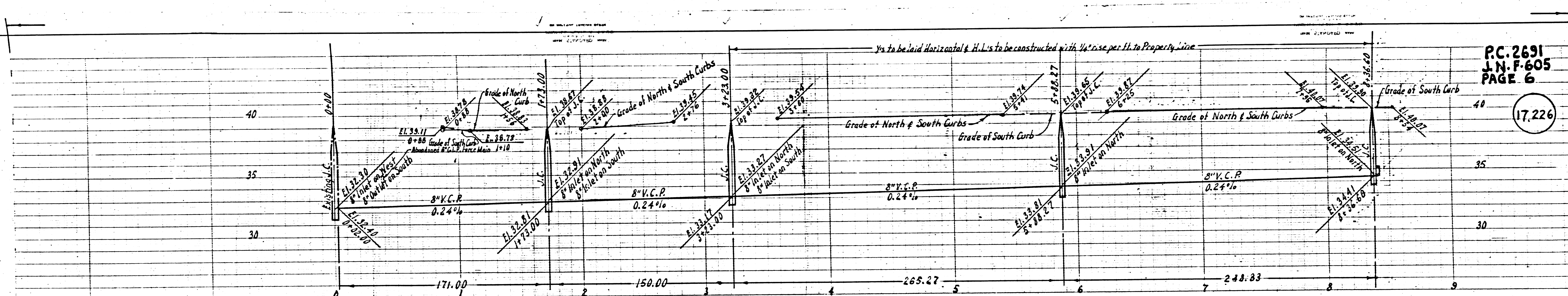


(C3)

TRACT NO 1125

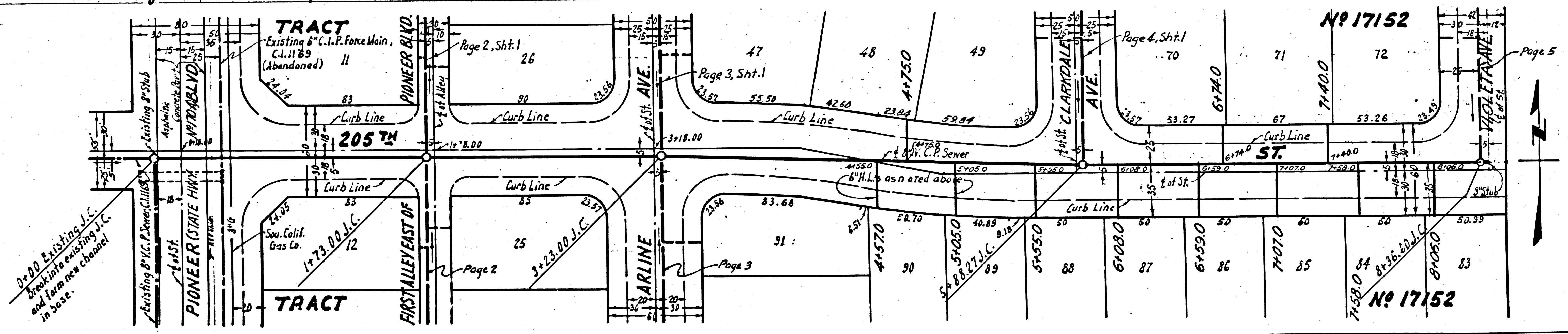
TRACT NO 1125

(S)

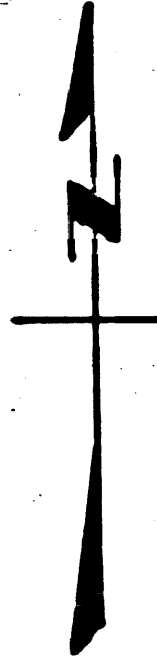


PC. 2691  
J.N.F. 605  
PAGE 6

17,226



1100 Existing J.C.  
line into existing J.C.  
and form new channel  
in June.

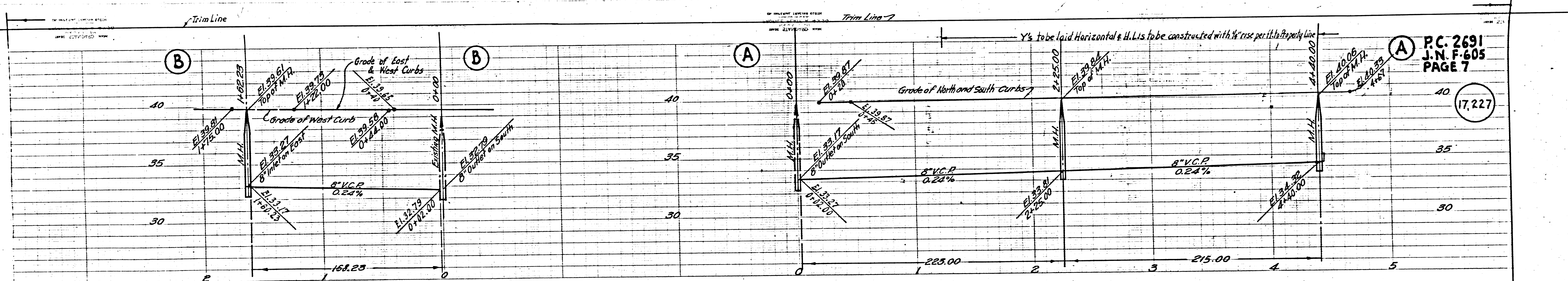


Large from 17152

TRACT NO 11125

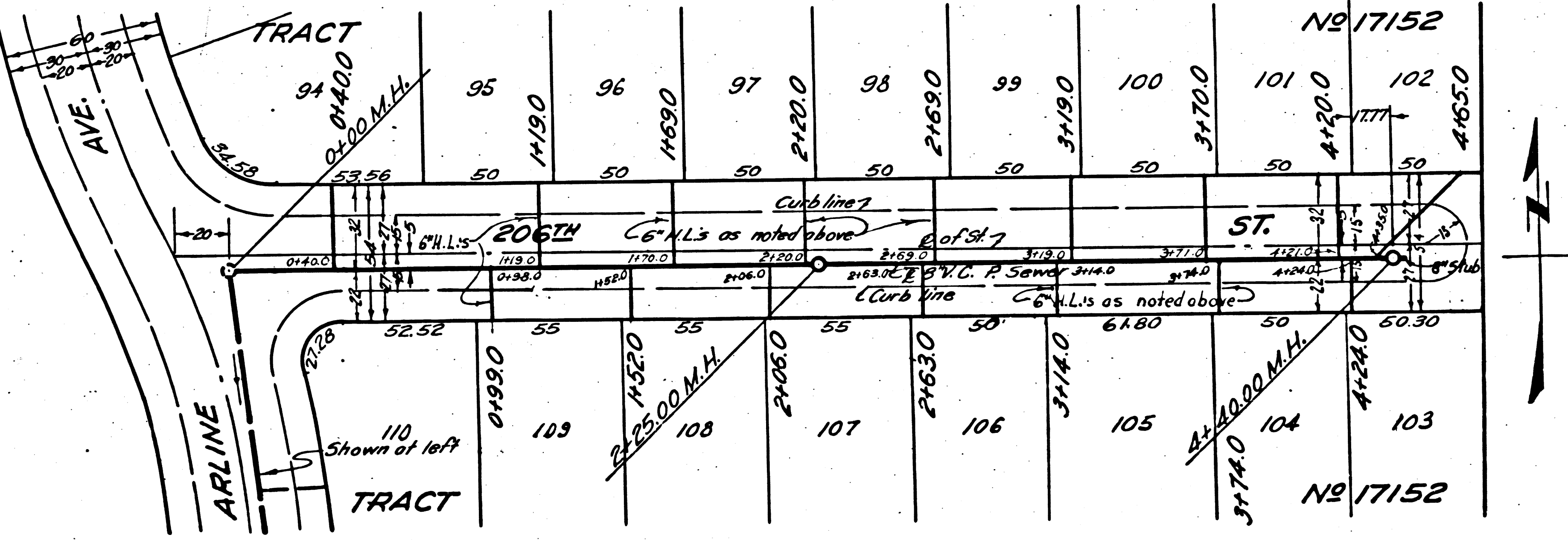
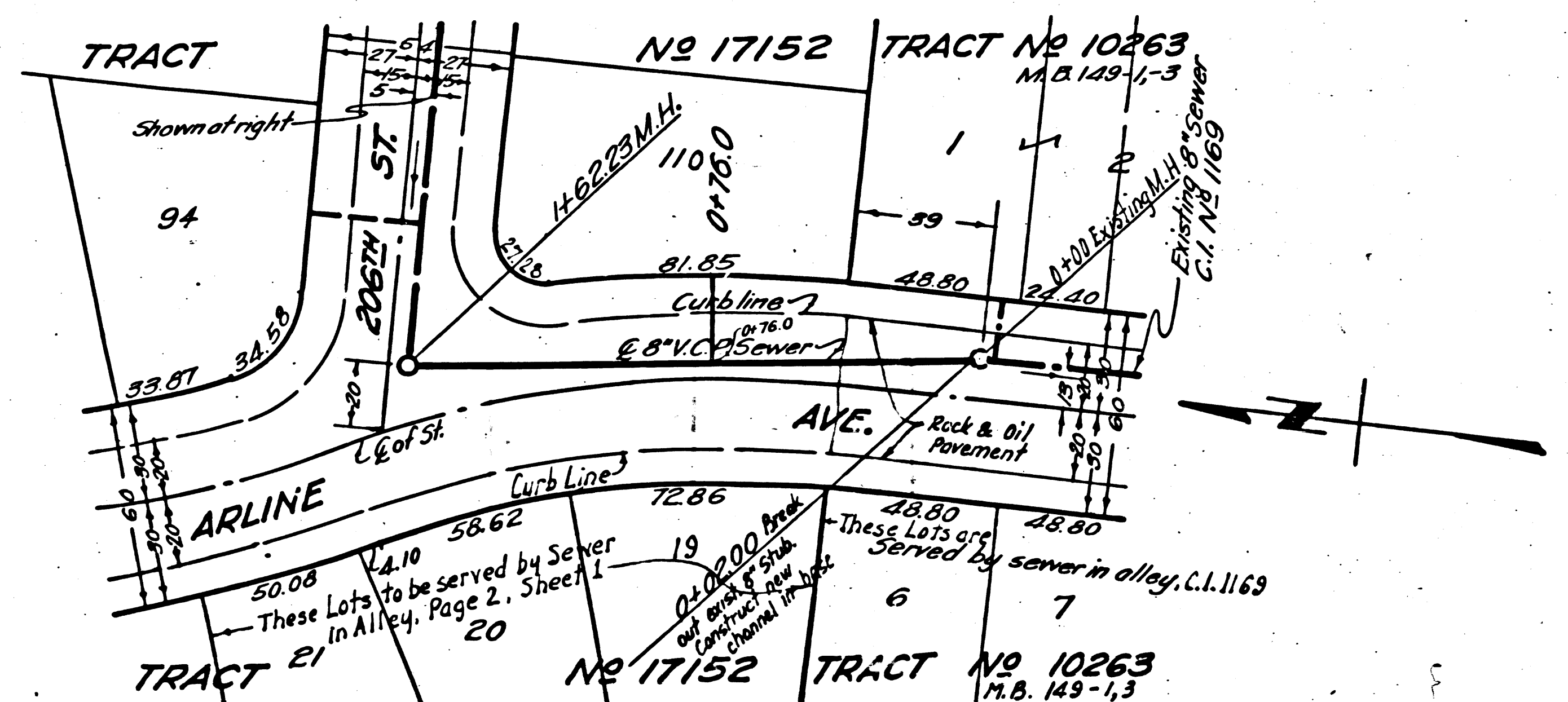
172.54

P 2691



PC. 2691  
J.N. F-605  
PAGE 7

17,227



Trim Line

Trim Line

Page Trim Line

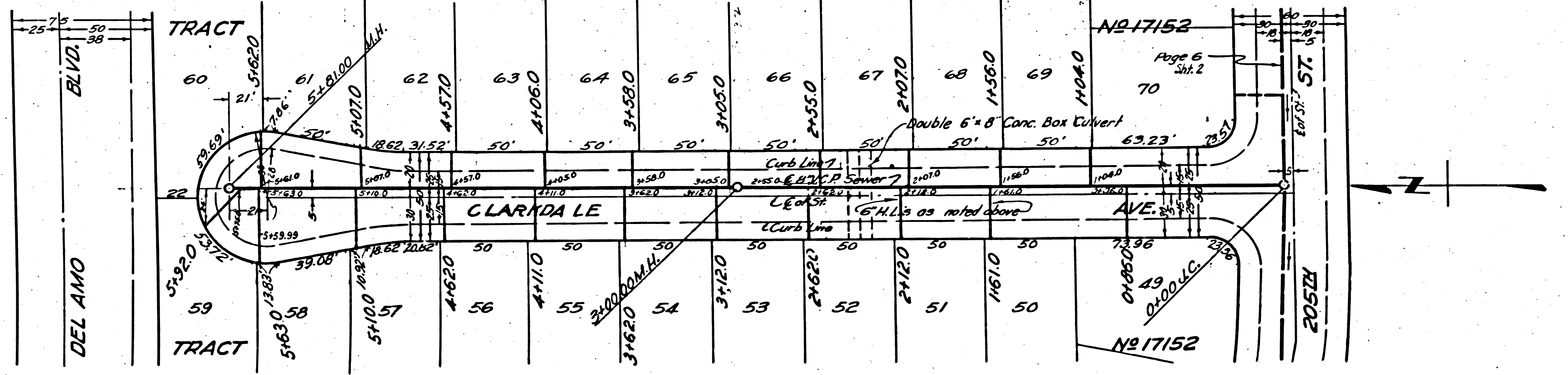
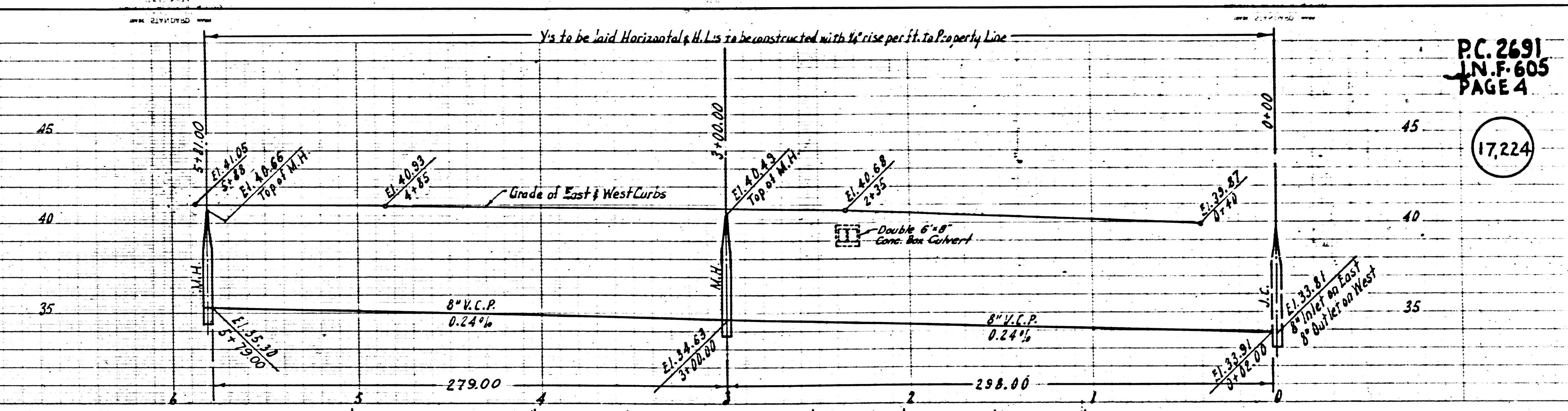
Trim Line

Y's to be laid Horizontal, H.L.s to be constructed with 1/4" rise per ft. to Property Line

PC. 2691  
LN. F. 605  
PAGE 4

17,224

(B)



Trim Line