

P.M. SY 2950 El. 19.497
 Lead & Brad N. Curb Los Coyotes Diagonal
 215' W. of W. curb ref. N.W. Cor.
 Los Coyotes Diagonal & Bellflower Blvd.

BELLFLOWER BLDG. DIST. 4

- NOTE:**
 Provide stakes on the property lines or property lines produced at right angles to the sewer line at the center line of each manhole.
 No representative of the County Engineer will survey or layout any portion of the work. The owner or his authorized representative shall furnish the County Engineer with grade sheets and stations for all house laterals and Y branches and shall provide stakes for them at their proper locations with stationing plainly marked. Any change in location shall be requested in writing by the owner or his representative.
 No revisions shall be made in these plans without the approval of the County Engineer.
1. Use standard manhole frames and covers, S-a-117, except as noted.
 2. Use standard strength pipe except as noted.
 3. Use cement mortar for all vitrified clay pipe joints.
 4. Resurface all trench within paved area to meet L.A. County Road Dept. or Calif. State Highway Dept. requirements in accordance with permit.
 5. Encase four feet of sewer at points of interference with poles, S-a-119.
 6. House laterals to be constructed with 1/4" rise per foot to property line except as noted.
 7. All structures shall be brick sewer structures, S-a-104, except as noted.
 8. Manhole tops in unimproved Rights-Of-Way to be 6" above finish grade.
 9. For allowable leakage test, use Formula No. 1,000, Spec's., Sec. 51.

PROFILE, ALIGNMENT AND GRADE OF
SANITARY SEWERS
 TO BE CONSTRUCTED IN
TRACT No 19171

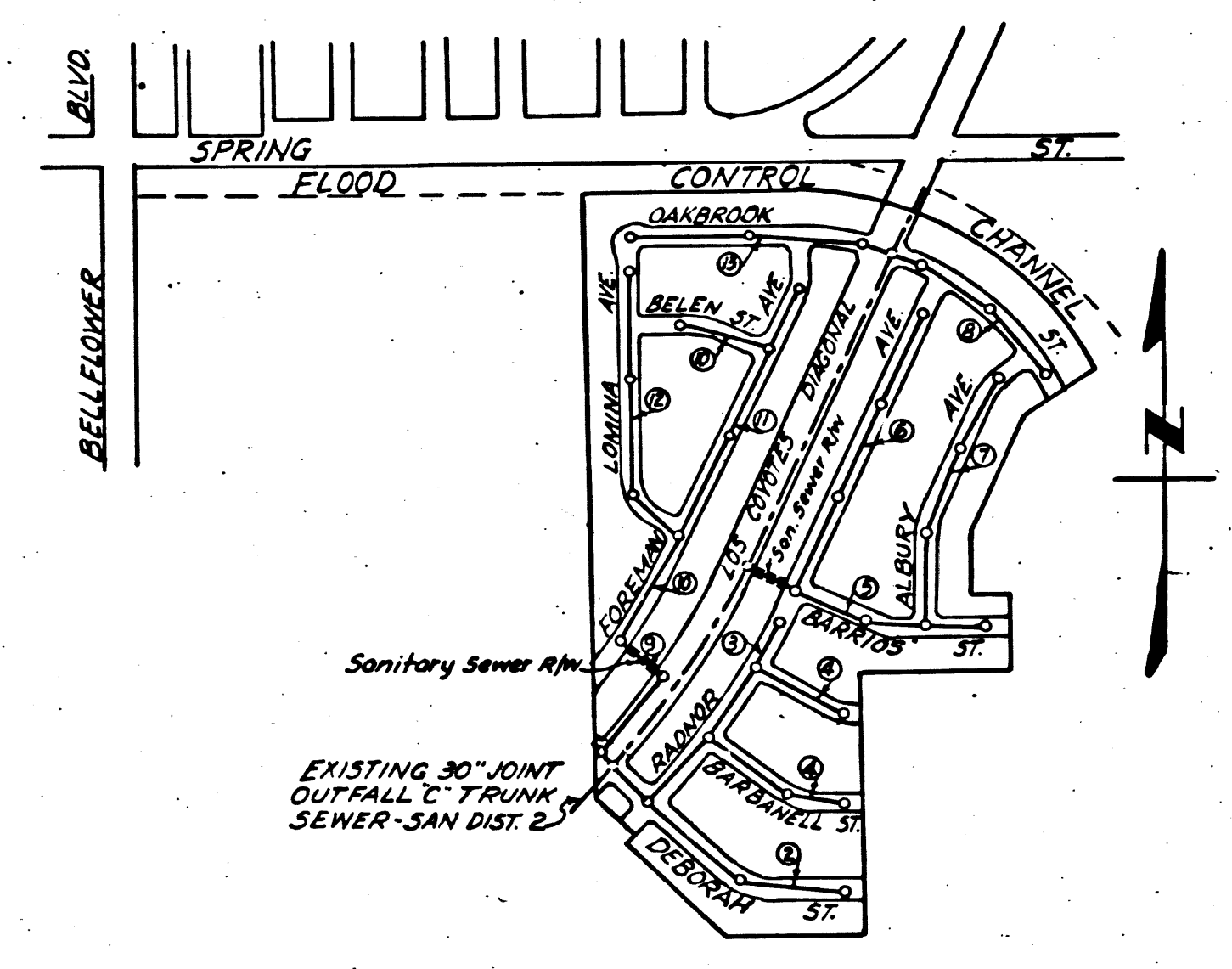
PC 2712
J.N. F632
 Page 1.

(17,228)

PRIVATE CONTRACT NO. 2712
 W. S. 31
 SHEET 1 OF 3 SHEETS
 Scale: VERT. 1"=4'
 HORIZ. 1"=40'
 JUNE 1953
 PREPARED IN THE OFFICES OF
CALDWELL, MASON & MUNTZ
 Reg. C. E. No. 5746
 FOR LEGEND SEE PLAN NO. S-a-64

NOTE:
 Grades to which this improvement is to be constructed are shown on plans and profiles. Grade points for top of curbs, center line of streets, or center line of alleys are shown by circles on profiles. At all points between designated points the grade shall be established so as to conform to a straight line drawn between said designated points.
 Elevations are in feet above U.S.G.S. datum or mean sea level.
 This drawing and the data hereon are hereby made a part of the specifications.
 Work shall be constructed according to specifications on file in the office of the County Engineer and shall be prosecuted only in the presence of the County Engineer.
 Before work can be started, the contractor must obtain a permit to excavate in County streets from the L.A. County Road Dept., 108 W. 2nd St. and make a deposit with the County Engineer, 733 L.A. County Engineering Building, sufficient to cover the cost of construction inspection and record plans.
 Approval of this plan by the County of Los Angeles does not constitute a representation as to the accuracy of the location of or the existence or non-existence of any underground utility, pipe, or structure within the limits of this project. This note applies to all sheets.
 If work is to be done in a State Highway, a permit must be obtained from the State of California, Division of Highways, 120 South Spring Street.

COUNTY OF LOS ANGELES, CALIFORNIA
 Approved, William J. Fox, County Engineer
 Approved, A. M. Rawn
 CHIEF ENGR. CO. SAN. DIST. NO. 3
 Checked by *Robert E. Kubler* 7-3-53
 Office of County Engineer, Reg. C. E. No. 7260



INDEX MAP
 SCALE 1"=600'
 TRACT No 19171
 PC 2712 J.N. F632

Checked 10-21-53 *M. Rawn*

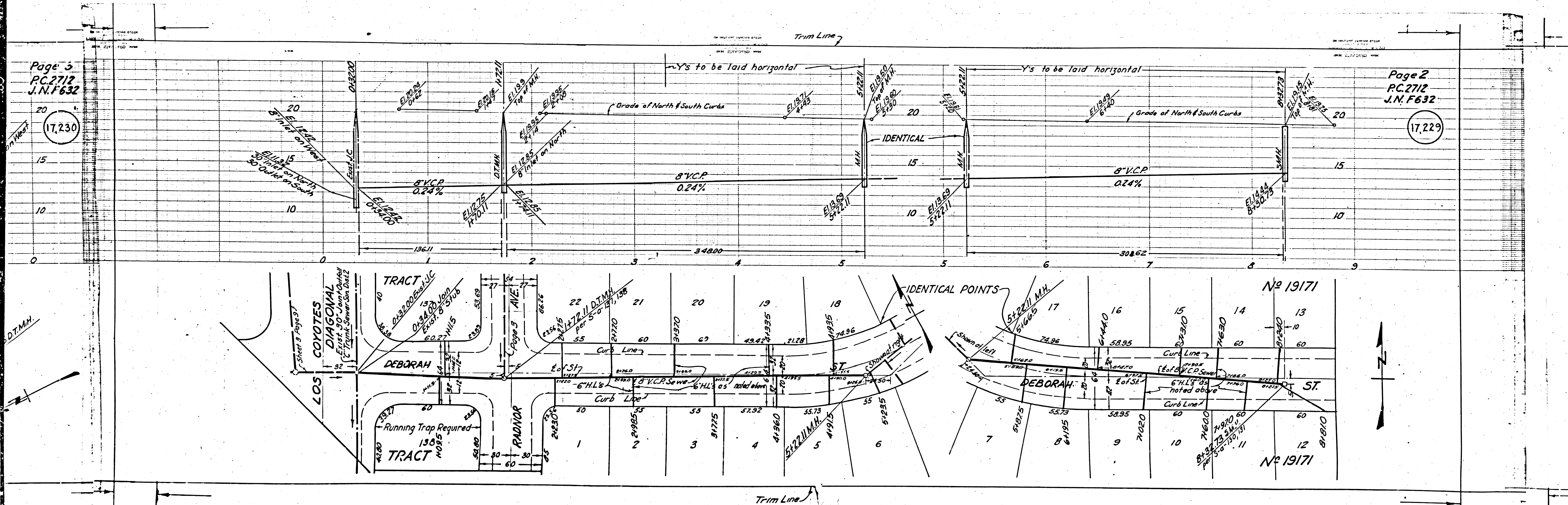
Sheet	Pages No.
1	1-4
2	5-8
3	9-13

TRACT No 19171

RECEIVED
 JUL
 L.A. COUNTY
 SANITARY

PC 2712
 S175 59

J.N.F632
 (1)



17,230

17,229

Trim Line

Trim Line

Y's to be laid horizontal

Y's to be laid horizontal

IDENTICAL

IDENTICAL POINTS

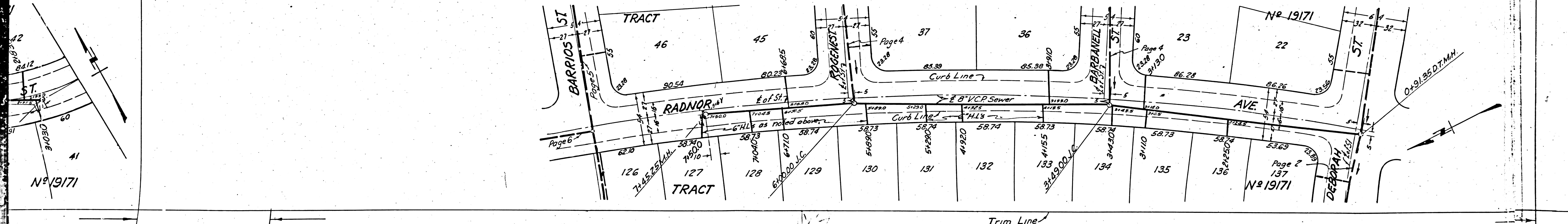
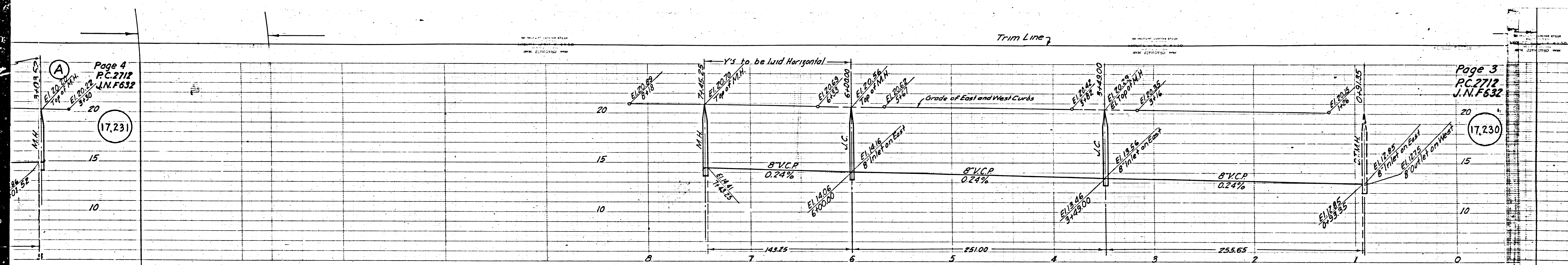
No 19171

No 19171

D.T.M.H.

N

S

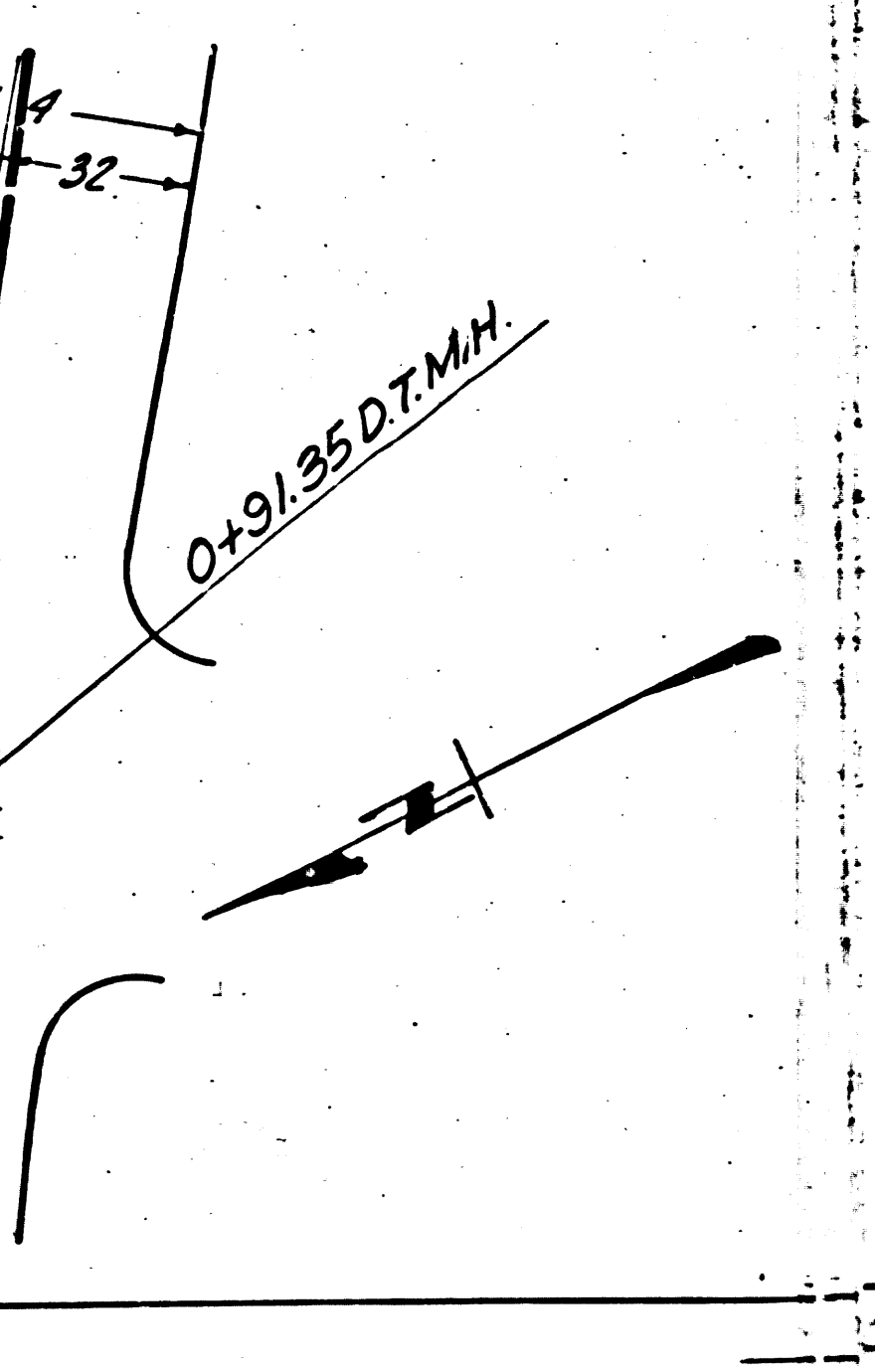
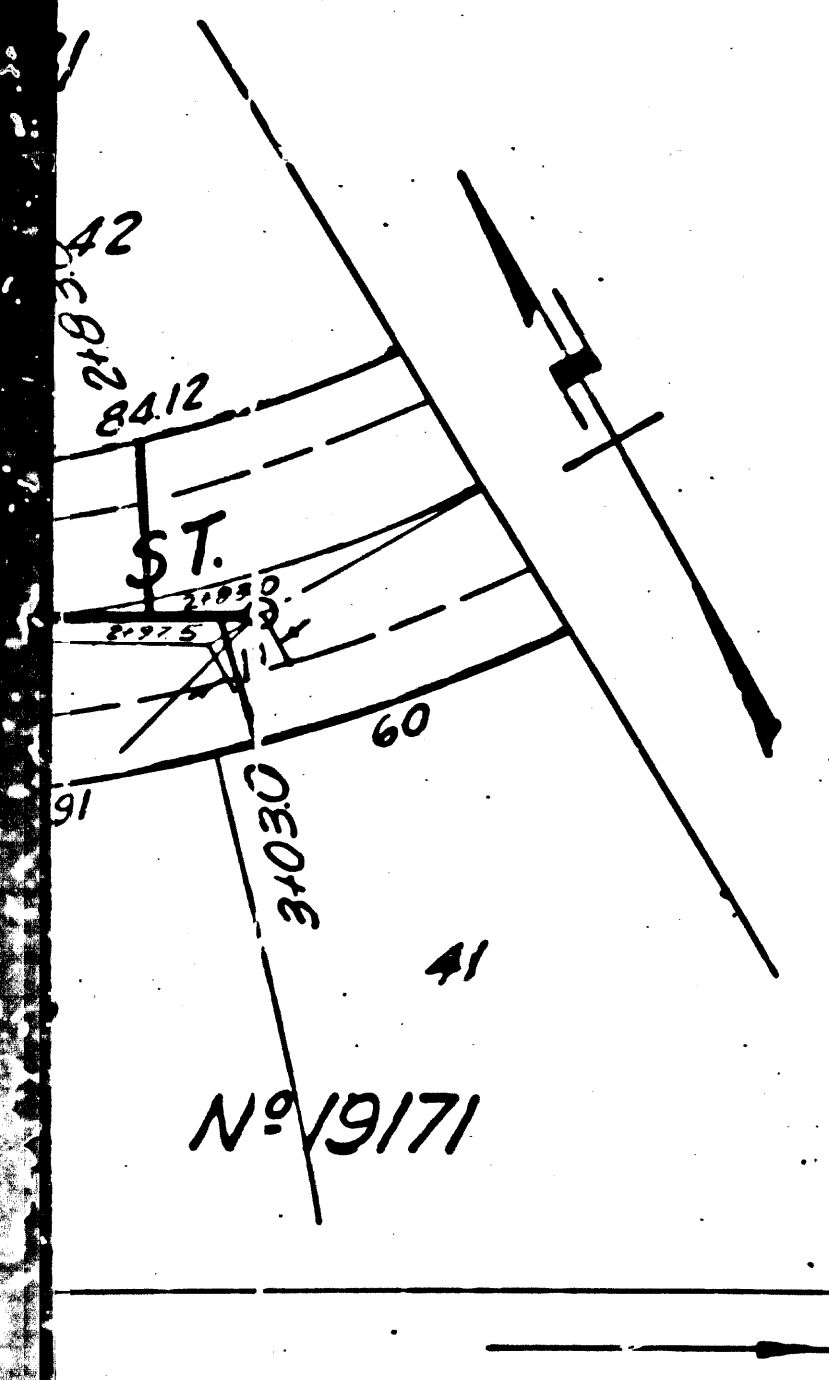


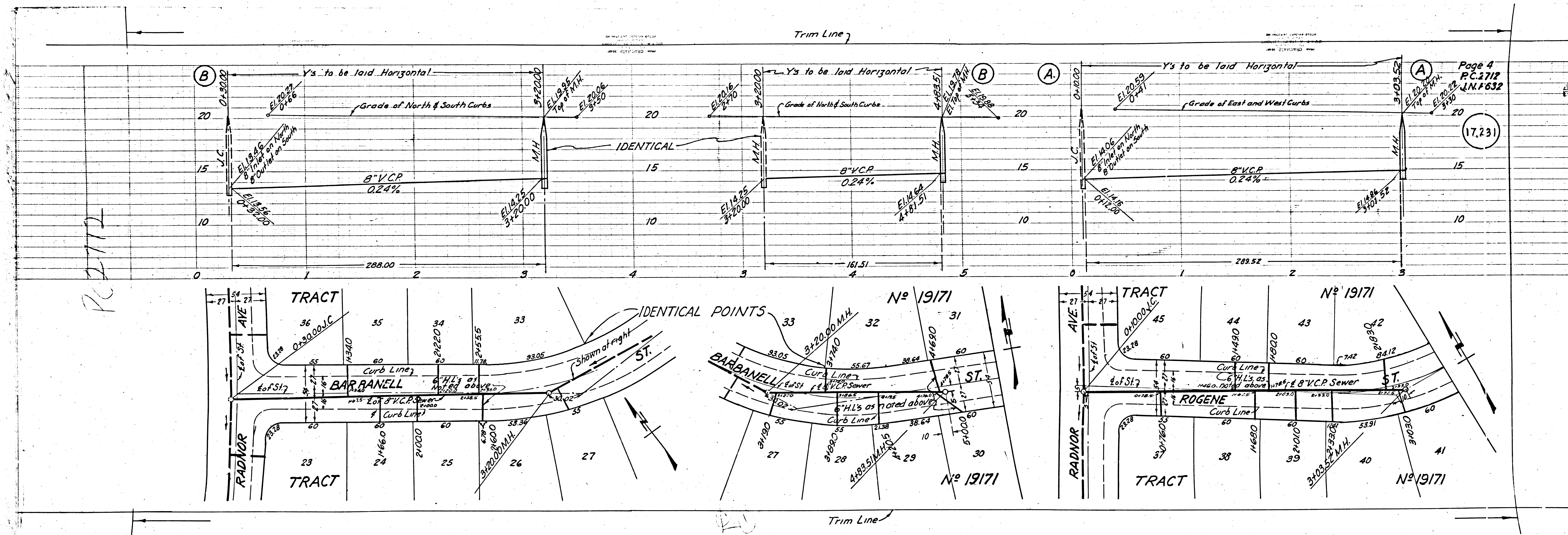
Page 4
P.C. 2712
J.N. F632

17,231

Page 3
P.C. 2712
J.N. F632

17,230





PC 2712

(17,231)

Trim Line

Nº 19171

Trim Line

Nº 19171

Nº 19171

TRACT

TRACT

TRACT

TRACT

BARBANELL ST.

ROGENE ST.

IDENTICAL POINTS

Shown at right

6\"/>

6\"/>

6\"/>

6\"/>

6\"/>

6\"/>

6\"/>

6\"/>

6\"/>

6\"/>

6\"/>

6\"/>

6\"/>

6\"/>

6\"/>

6\"/>

6\"/>

6\"/>

6\"/>

6\"/>

6\"/>

6\"/>

6\"/>

6\"/>

6\"/>

6\"/>

6\"/>

6\"/>

6\"/>

6\"/>

6\"/>

6\"/>

6\"/>

6\"/>

6\"/>

6\"/>

6\"/>

6\"/>

6\"/>

6\"/>

6\"/>

6\"/>

6\"/>

6\"/>

6\"/>

6\"/>

6\"/>

6\"/>

6\"/>

6\"/>

6\"/>

6\"/>

6\"/>

6\"/>

6\"/>

6\"/>

6\"/>

6\"/>

6\"/>

6\"/>

6\"/>

6\"/>

6\"/>

6\"/>

6\"/>

6\"/>

6\"/>

6\"/>

6\"/>

6\"/>

6\"/>

6\"/>

6\"/>

6\"/>

6\"/>

6\"/>

6\"/>

6\"/>

6\"/>

6\"/>

6\"/>

6\"/>

6\"/>

6\"/>

6\"/>

6\"/>

6\"/>

6\"/>

6\"/>

6\"/>

6\"/>

6\"/>

6\"/>

6\"/>

6\"/>

6\"/>

6\"/>

6\"/>

6\"/>

6\"/>

6\"/>

6\"/>

6\"/>

6\"/>

6\"/>

6\"/>

6\"/>

6\"/>

6\"/>

6\"/>

6\"/>

6\"/>

6\"/>

6\"/>

6\"/>

6\"/>

6\"/>

6\"/>

6\"/>

6\"/>

6\"/>

6\"/>

6\"/>

6\"/>

6\"/>

6\"/>

6\"/>

6\"/>

6\"/>

6\"/>

6\"/>

6\"/>

6\"/>

6\"/>

6\"/>

6\"/>

6\"/>

6\"/>

6\"/>

6\"/>

6\"/>

6\"/>

6\"/>

6\"/>

6\"/>

6\"/>

6\"/>

6\"/>

6\"/>

6\"/>

6\"/>

6\"/>

6\"/>

6\"/>

6\"/>

6\"/>

6\"/>

6\"/>

6\"/>

6\"/>

6\"/>

6\"/>

6\"/>

6\"/>

6\"/>

6\"/>

6\"/>

6\"/>

6\"/>

6\"/>

6\"/>

6\"/>

6\"/>

6\"/>

6\"/>

6\"/>

6\"/>

6\"/>

6\"/>

6\"/>

6\"/>

6\"/>

6\"/>

6\"/>

6\"/>

6\"/>

6\"/>

6\"/>

6\"/>

6\"/>

6\"/>

6\"/>

6\"/>

6\"/>

6\"/>

6\"/>

6\"/>

6\"/>

6\"/>

6\"/>

6\"/>

6\"/>

6\"/>

6\"/>

6\"/>

6\"/>

6\"/>

6\"/>

6\"/>

6\"/>

6\"/>

6\"/>

6\"/>

6\"/>

6\"/>

6\"/>

6\"/>

6\"/>

6\"/>

6\"/>

6\"/>

6\"/>

6\"/>

6\"/>

6\"/>

6\"/>

6\"/>

6\"/>

6\"/>

6\"/>

6\"/>

6\"/>

6\"/>

6\"/>

6\"/>

6\"/>

6\"/>

6\"/>

6\"/>

6\"/>

6\"/>

6\"/>

6\"/>

6\"/>

6\"/>

6\"/>

6\"/>

6\"/>

6\"/>

6\"/>

6\"/>

6\"/>

6\"/>

6\"/>

6\"/>

6\"/>

6\"/>

6\"/>

6\"/>

6\"/>

6\"/>

6\"/>

6\"/>

6\"/>

6\"/>

6\"/>

6\"/>

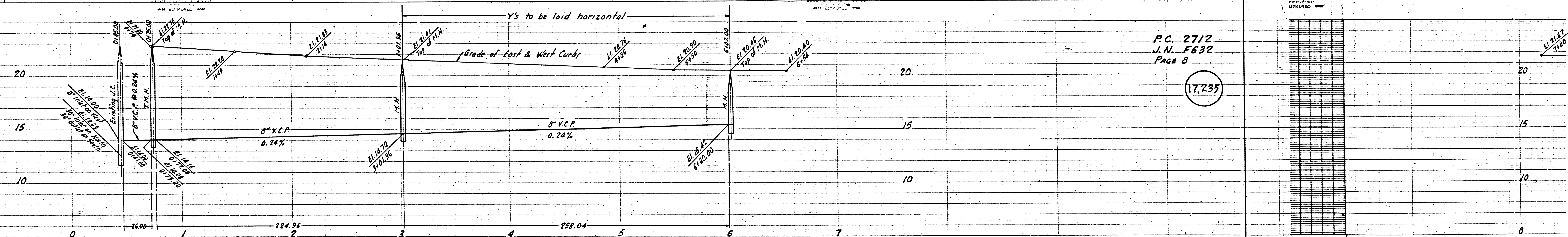
6\"/>

6\"/>

6\"/>

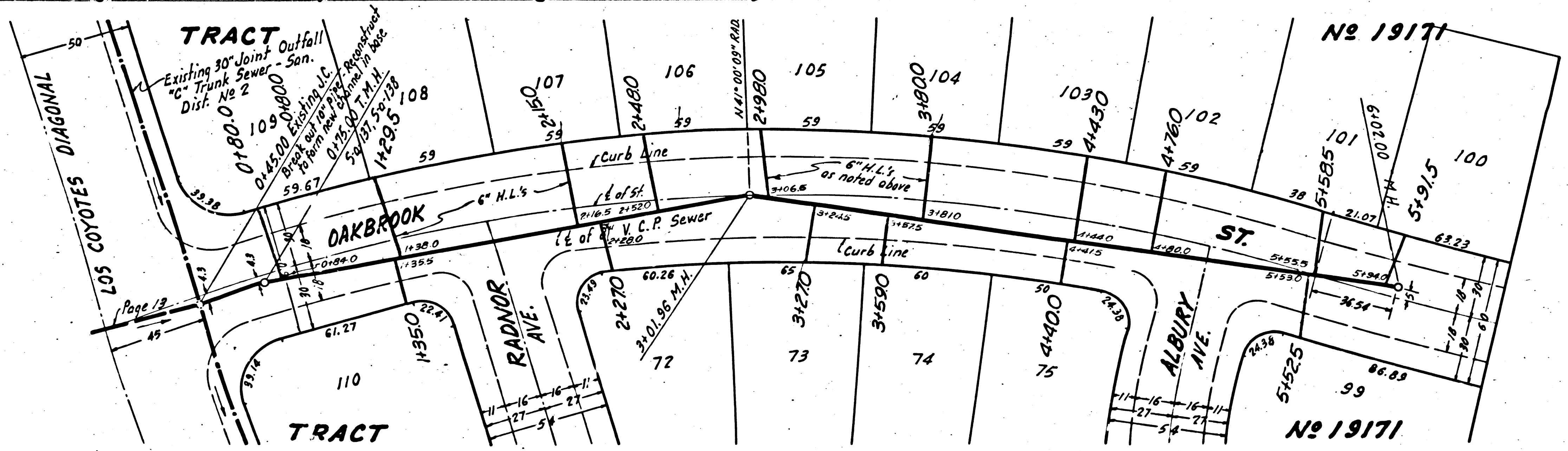
6\"/>

Trim Line



P.C. 2712
 J.N. F632
 PAGE B

17,235



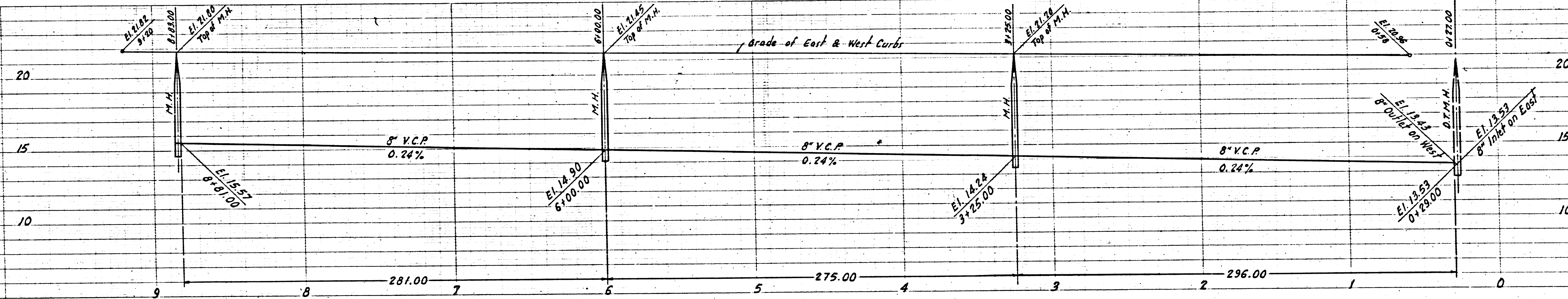
Trim Line

Page No. 8
 This lot served by sewers in 1911.
 5.23

77.7
 This lot served by sewers in 1911.
 75
 1911 No. 8

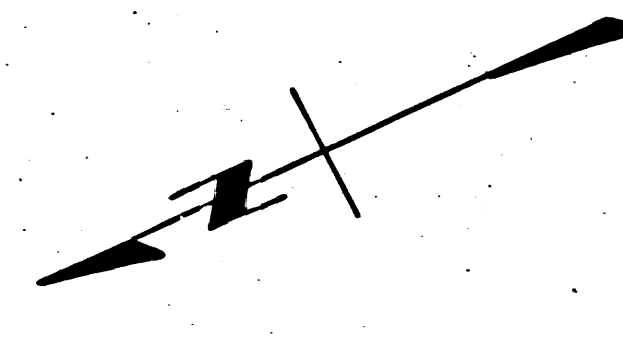
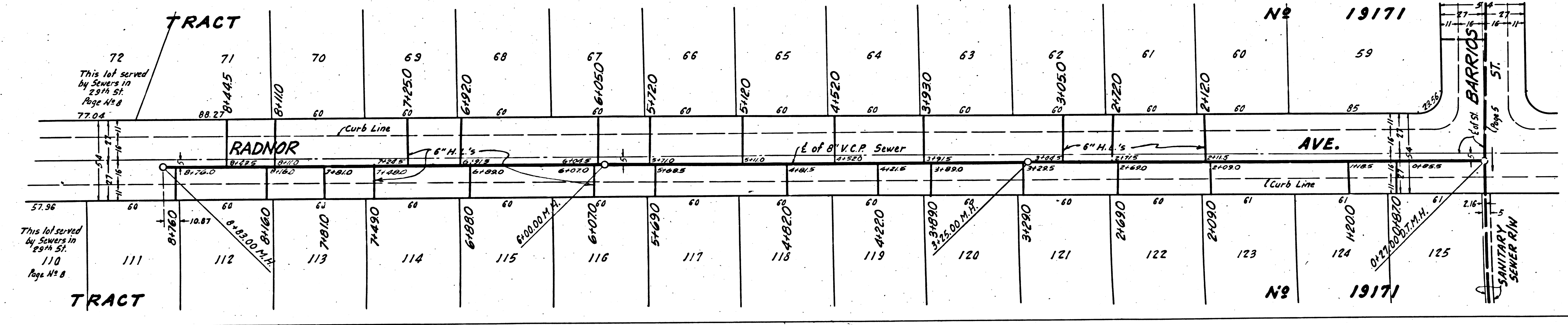
TRACT

DEPARTMENT OF PUBLIC WORKS
DIVISION OF STREETS AND SANITATION
SANITARY SEWERAGE



P.C. 2712
J.N. F632
PAGE 6

17,233

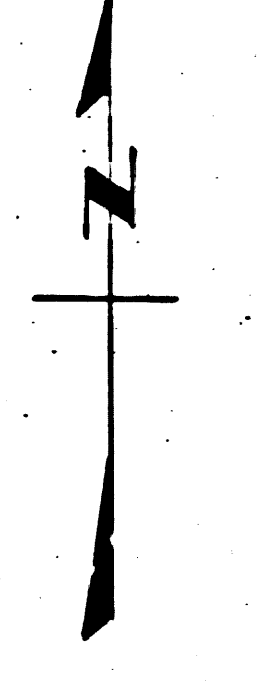
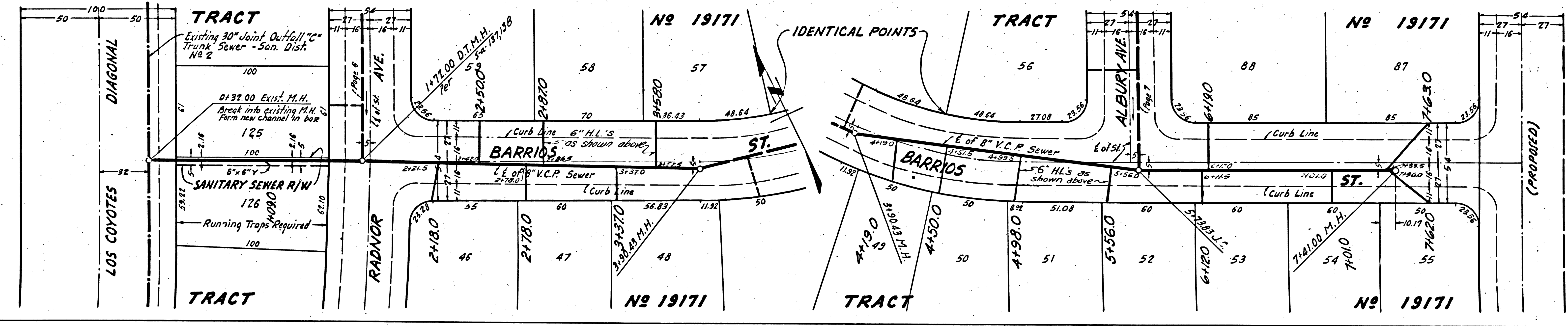
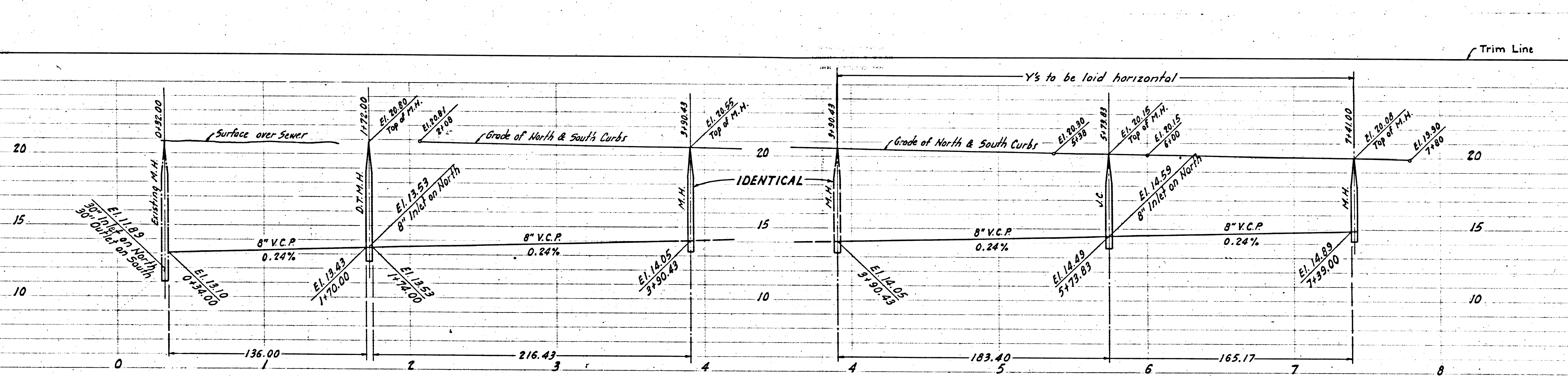


2712
F632
6

7.233

P.C. 2712
J.N. F632
PAGE 5

17.232

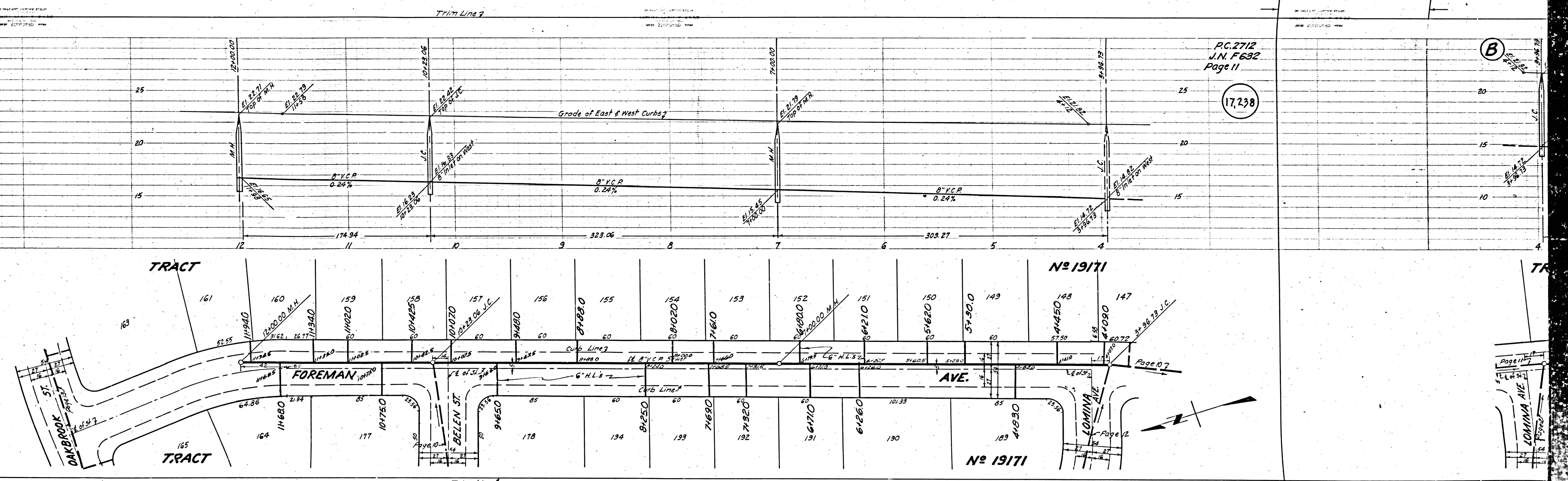


Checked 10-21-53 McEwen

Trim Line

P.C. 2712 TR. 19171
S.E. 1/4 S. 15 T. 11 N. R. 15 E.

5



P.C. 2712
J.N. F632
Page 11

17,238

(B)

No 19171

FOREMAN AVE.

No 19171

LOMINA AVE.

Page 0.7

Page 1.2

Page 1.1

Page 1.2

Page 1.3

Page 1.4

Page 1.5

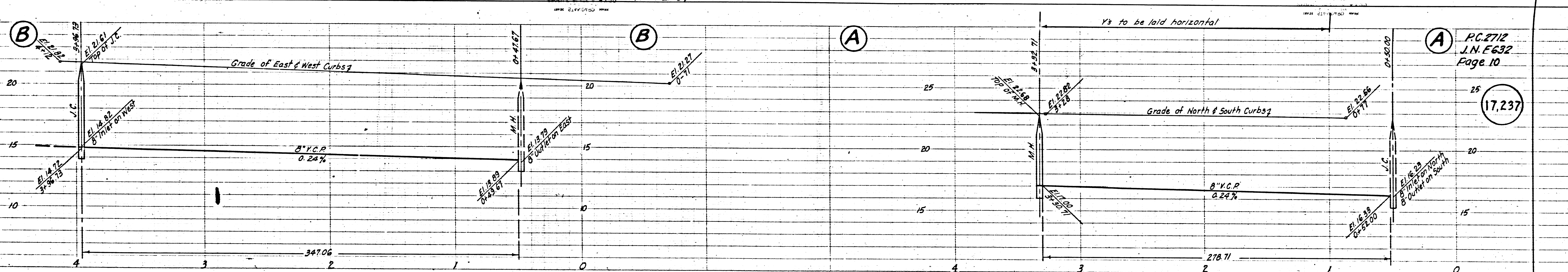
Page 1.6

Page 1.7

Page 1.8

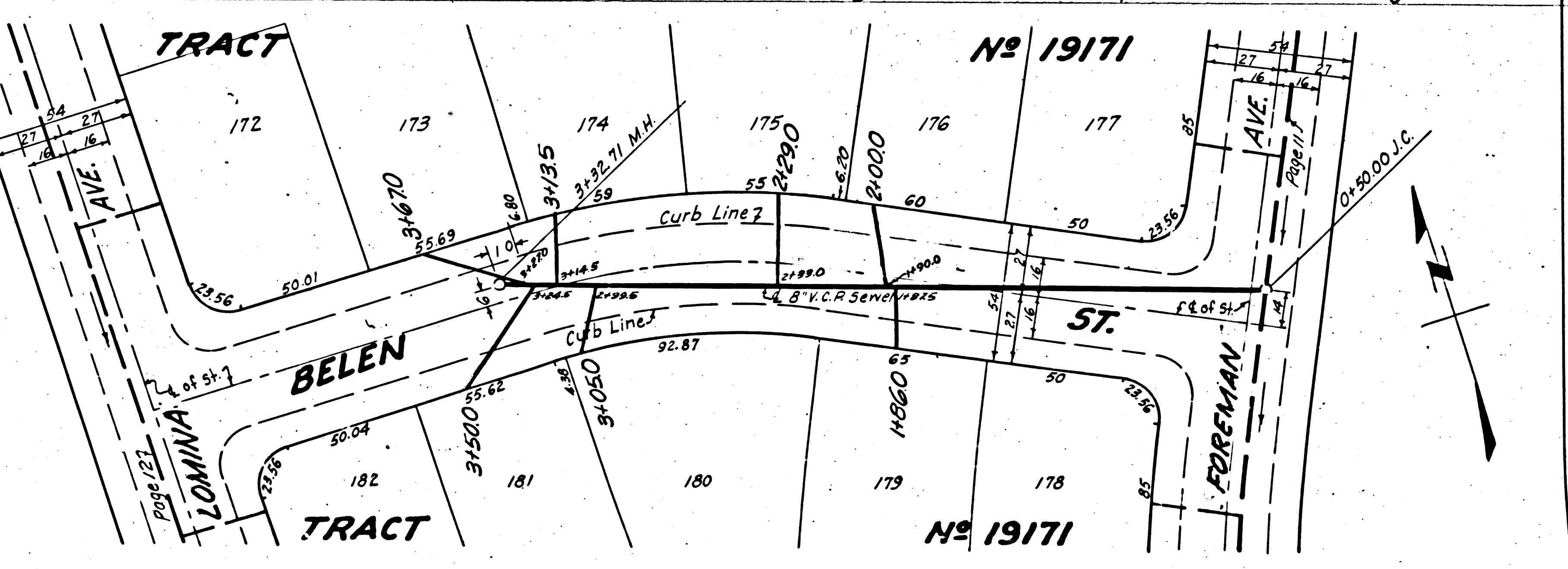
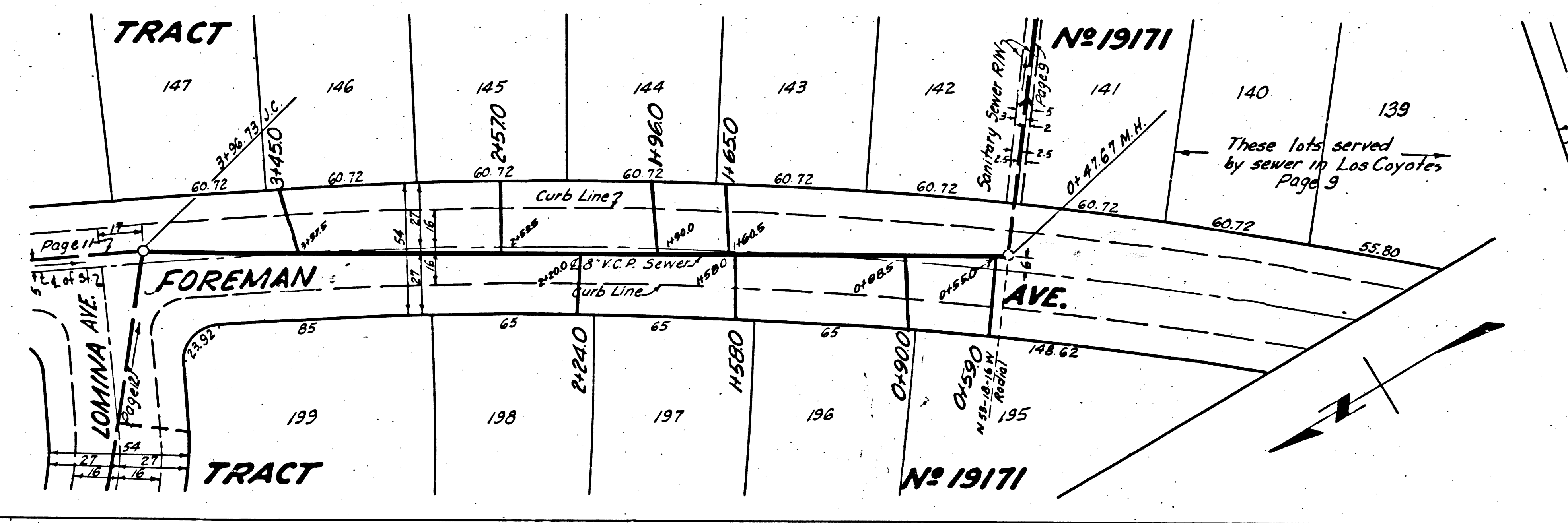
Page 1.9

Page 1.10



PC.2712
J.N. E632
Page 10

17,237

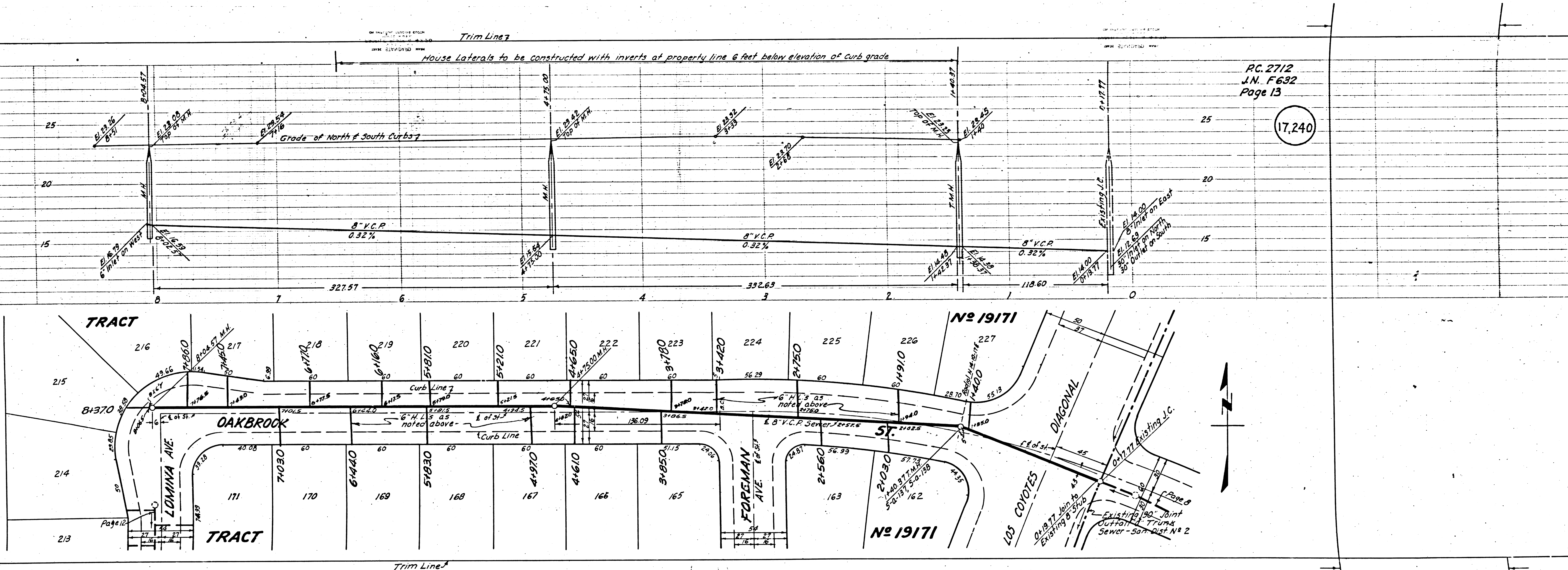


Trim Line

House Laterals to be constructed with inverts of property line 6 feet below elevation of curb grade

PC 2712
J.N. F632
Page 13

17,240



Trim Line

Page 9

Existing 18" Joint Outfall Trunk Sewer - San Dist No 2

Existing 18" Joint Outfall Trunk Sewer - San Dist No 2

Existing 18" Joint Outfall Trunk Sewer - San Dist No 2

Existing 18" Joint Outfall Trunk Sewer - San Dist No 2

Existing 18" Joint Outfall Trunk Sewer - San Dist No 2

Existing 18" Joint Outfall Trunk Sewer - San Dist No 2

Existing 18" Joint Outfall Trunk Sewer - San Dist No 2

Existing 18" Joint Outfall Trunk Sewer - San Dist No 2

Existing 18" Joint Outfall Trunk Sewer - San Dist No 2

Existing 18" Joint Outfall Trunk Sewer - San Dist No 2

Existing 18" Joint Outfall Trunk Sewer - San Dist No 2

Existing 18" Joint Outfall Trunk Sewer - San Dist No 2

Existing 18" Joint Outfall Trunk Sewer - San Dist No 2

Existing 18" Joint Outfall Trunk Sewer - San Dist No 2

Existing 18" Joint Outfall Trunk Sewer - San Dist No 2

Existing 18" Joint Outfall Trunk Sewer - San Dist No 2

Existing 18" Joint Outfall Trunk Sewer - San Dist No 2

Existing 18" Joint Outfall Trunk Sewer - San Dist No 2

Existing 18" Joint Outfall Trunk Sewer - San Dist No 2

Existing 18" Joint Outfall Trunk Sewer - San Dist No 2

Existing 18" Joint Outfall Trunk Sewer - San Dist No 2

Existing 18" Joint Outfall Trunk Sewer - San Dist No 2

Existing 18" Joint Outfall Trunk Sewer - San Dist No 2

Existing 18" Joint Outfall Trunk Sewer - San Dist No 2

Existing 18" Joint Outfall Trunk Sewer - San Dist No 2