

LENNOX-7 LOMITA-7L

PC. 2714 J.N. F 634  
PAGE 2

16,978

B.M. 51 5099 Elev. 58.318  
City of L.A. Man., Flush with pave-  
ment 1' 80" N. and 1' 34" E. of E.  
intersection Sepulveda Blvd. and  
Avalon Blvd. mkd. 57-H. Elev.  
58.54. + 5' 5" of Guy Pole #128590M

- Notes:**  
No representative of the County Engineer will survey or layout any portion of the work.  
The owner or his authorized representative shall furnish the County Engineer with grade sheets and stations of all House Connections and V Branches and shall provide stakes for them at their proper locations with stationing plainly marked. Any change of location shall be requested in writing by the owner or his representative.  
No revisions shall be made in these plans without approval of the County Engineer.
1. USE STANDARD MANHOLE FRAME AND COVERS S-a-112
  2. USE STANDARD STRENGTH PIPE
  3. USE CEMENT FOR ALL VITRIFIED-CLAY PIPE JOINTS
  4. RESURFACE ALL TRENCH WITHIN PAVED AREA TO MEET LOS ANGELES COUNTY ROAD DEPT REQUIREMENTS
  5. ENCASE FOUR FEET OF SEWER AT POINTS OF INTERFERENCE WITH POLES S-a-119.
  6. ALL STRUCTURES SHALL BE BRICK SEWER STRUCTURES S-a-104.
  7. HOUSE LATERALS TO BE CONSTRUCTED WITH 1/4" RISE PER FOOT TO PROPERTY LINE
  8. FOR ALLOWABLE LEAKAGE TEST, USE FORMULA NO. 1, SPEC'S. SEC. 51.
  9. PROVIDE STAKES ON THE PROPERTY LINES OR PROPERTY LINES PRODUCED AT RIGHT ANGLES TO THE SEWER LINE AT THE CENTER LINE OF EACH MANHOLE.

PROFILE, ALIGNMENT AND GRADE OF  
**SANITARY SEWERS**  
TO BE CONSTRUCTED IN  
238<sup>TH</sup> PLACE  
BETWEEN IDABELLE AVE. AND AVALON BLVD.  
AVALON BOULEVARD  
BETWEEN 238<sup>TH</sup> PLACE AND SEPULVEDA BLVD

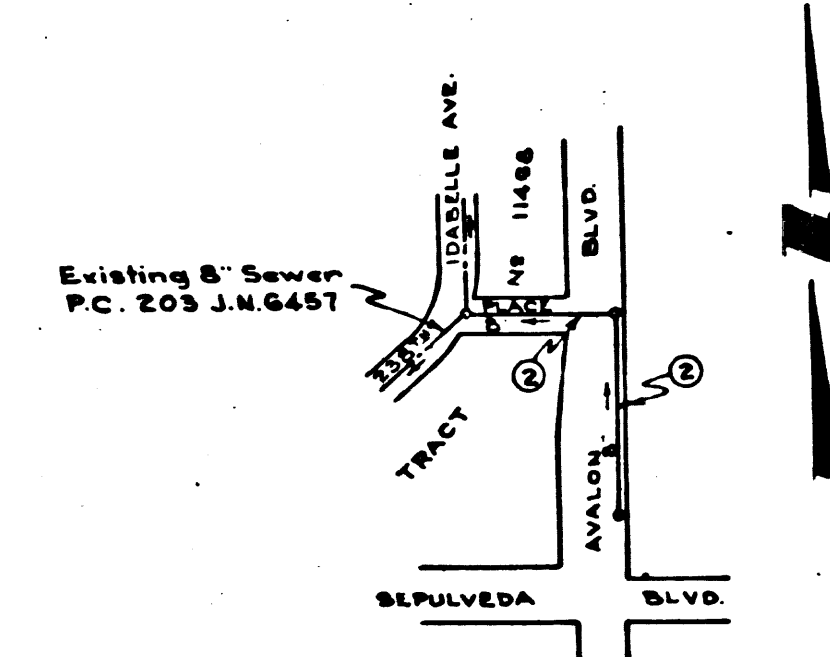
PC. 2714 J.N. F 634  
PAGE 1

16,997

PRIVATE CONTRACT NO 2714  
W.S. 28  
SCALE VERT 1"=4'  
HORIZ 1"=40'  
JUNE 1953  
SHEET 1 OF 1 SHEETS  
PREPARED IN THE OFFICES OF  
**E. J. EPPERSON**  
BY *E. J. Epperson*

FOR LEGEND  
SEE PLAN NO S-a-64

**NOTE:**  
GRADES TO WHICH THIS IMPROVEMENT IS TO BE CONSTRUCTED ARE SHOWN ON PLANS AND PROFILES  
GRADE POINTS FOR TOP OF CURB, CENTER LINE OF STREET OR CENTER LINE OF ALLEY ARE SHOWN BY  
CIRCLES ON PROFILES AT ALL POINTS BETWEEN DESIGNATED POINTS. THE GRADE SHALL BE ESTABLISHED  
SO AS TO CONFORM TO A STRAIGHT LINE DRAWN BETWEEN SAID DESIGNATED POINTS.  
ELEVATIONS ARE IN FEET ABOVE U.S.C. & G.S. DATUM OR MEAN SEA LEVEL.  
THIS DRAWING AND THE DATA HEREON ARE HEREBY MADE A PART OF THE SPECIFICATIONS  
AND SHALL BE PROSECUTED ONLY IN THE PRESENCE OF THE COUNTY ENGINEER.  
BEFORE WORK CAN BE STARTED THE CONTRACTOR MUST OBTAIN A PERMIT TO EXCAVATE IN  
COUNTY STREETS FROM THE L.A. COUNTY ROAD DEPT. JOB W. 2<sup>ND</sup> ST. AND MAKE A DEPOSIT WITH THE  
COUNTY ENGINEER, 14759 LOS ANGELES COUNTY ENGINEERING BLDG., SUFFICIENT TO COVER THE COST  
OF CONSTRUCTION INSPECTION AND RECORD PLANS.  
APPROVAL OF THIS PLAN BY THE COUNTY OF LOS ANGELES DOES NOT CONSTITUTE A  
REPRESENTATION AS TO THE ACCURACY OF THE LOCATION OF, OR THE EXISTENCE OR NON-EXISTENCE  
OF ANY UNDERGROUND UTILITY, PIPE, OR STRUCTURE WITHIN THE LIMITS OF THIS PROJECT  
THIS NOTE APPLIES TO ALL SHEETS.



| SHEET NO. | PAGES |
|-----------|-------|
| 1         | 1-2   |

checked 8-20-53 *[Signature]*

APPROVED, WILLIAM J. FOX, COUNTY ENGINEER  
BY *W. J. Fox*  
CHIEF DEPUTY

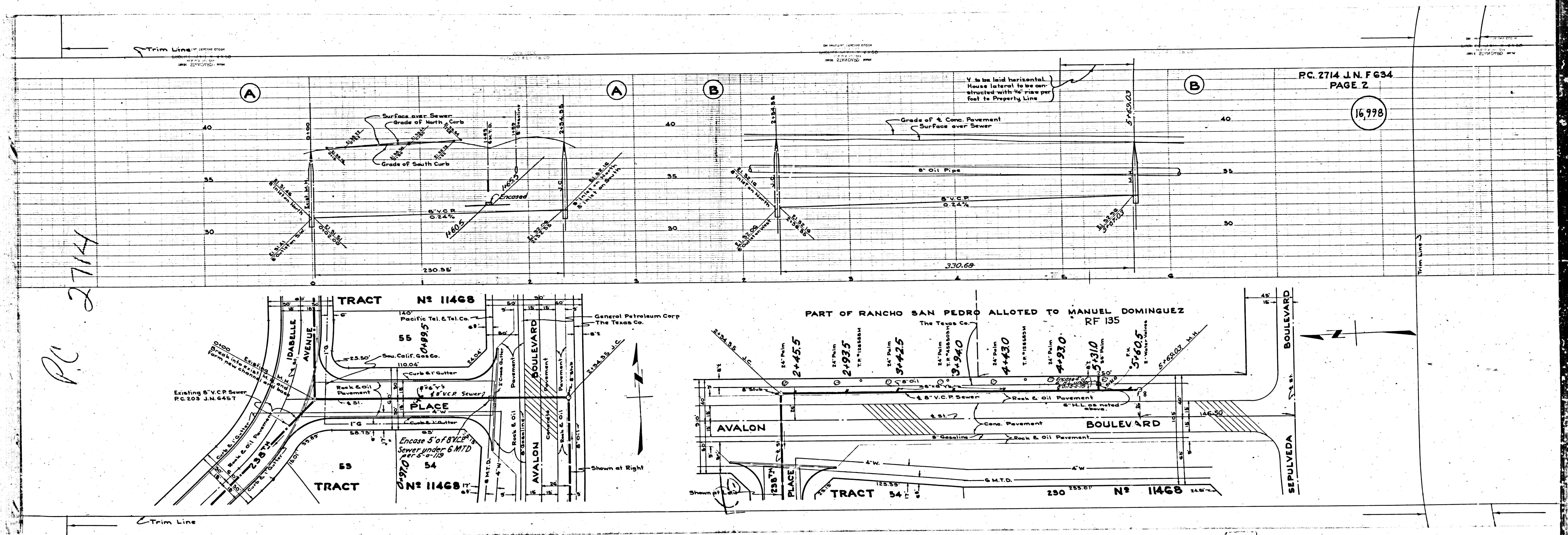
APPROVED, A. M. RAWN  
CHIEF ENGR. CO. SAN. DIST. NO. 12  
BY *A. M. Rawn*  
OFFICE ENGINEER

CHECKED BY: *H. L. Smelser* 7-19-53  
OFFICE OF COUNTY ENGINEER, REG. C.E. NO. 4412

P.C. 2714

1116337

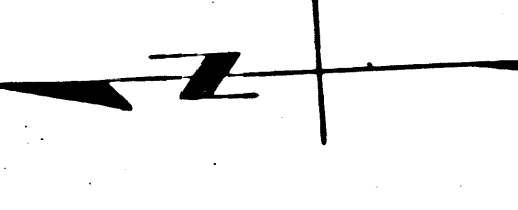
Trim Line 5



PC. 2714 J.N. F 634  
PAGE 2

16,998

PC 2714



Trim Line

OR INVERT LOWEST FROM

Trim Line

Trim Line

TRACT No 11468

PART OF RANCHO SAN PEDRO ALLOTTED TO MANUEL DOMINGUEZ  
RF 135

TRACT No 11468

TRACT No 11468