

WHITTIER BLDG. DIST. NO 11

- NOTE:
Provide stakes on the property lines or property lines produced at right angles to the sewer line at the center line of each manhole.
No representative of the County Engineer will survey or layout any portion of the work. The owner or his authorized representative shall furnish the County Engineer with grade sheets and stations for all house laterals and Y branches and shall provide stakes for them at their proper locations with stationing plainly marked. Any change in location shall be requested in writing by the owner or his representative.
No revisions shall be made in these plans without the approval of the County Engineer.
1. Use standard manhole frames and covers, S-a-117.
 2. Use standard strength pipe except as noted.
 3. Use cement mortar for all vitrified clay pipe joints.
 4. Resurface all trench within paved area to meet L.A. County Road Dept. or Calif. State Highway Dept. requirements in accordance with permit.
 5. Encase four feet of sewer at points of interference with poles, S-a-119.
 6. House laterals to be constructed with inverts at property line... 6" feet below curb grade except as noted.
 7. All structures shall be brick sewer structures, S-a-104.
 8. Manhole tops in unimproved Rights-Of-Way to be 6" above finish grade.
 9. For allowable leakage test, use Formula No. 1000, Specs., Sec. 51.

B.M. 3 SY #1287 L&T 2' S of B.C.R.
S.E. Cor. Mills Ave. & Anola St.
Elev. 143.50

PROFILE, ALIGNMENT AND GRADE OF
SANITARY SEWERS
TO BE CONSTRUCTED IN

TRACT NO 18223

PRIVATE CONTRACT NO. 2715
W.S. 34

SHEET 1 OF 1 SHEETS
Scale: VERT. 1" = 4'
HORIZ. 1" = 40'

PREPARED IN THE OFFICES OF
KEMMERER ENGINEERING CO., INC.
By *Kenneth C. Thomson* P.E. No. 8224
FOR LEGEND SEE PLAN NO. S-a-64

P.C. 2715
J.N. 0959.01
Page 1 of 100.02

20,650

P.C. 2715
PAGE 2

NO CHARGE FOR CONNECTIONS

20,650

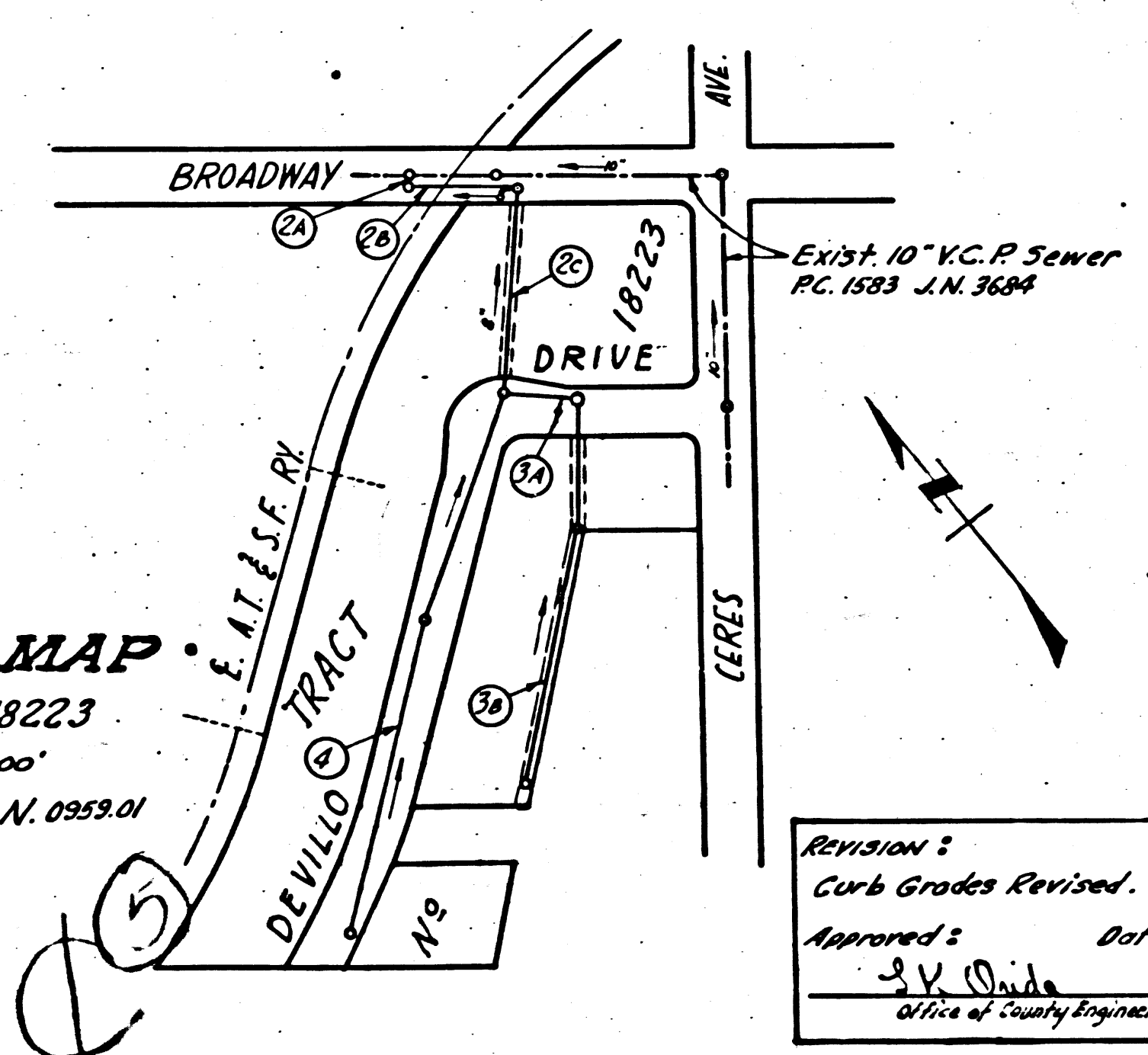
18223

5' GR. Slope from Drive
& of R.R. Track
15' x 12'
14' NS

SHEET NO	PAGES
1	1-5

NO CHARGE FOR CONNECTIONS
L. Anita, 6-30-54

INDEX MAP
TRACT NO 18223
SCALE: 1" = 200'
P.C. 2715 J.N. 0959.01



NOTE:
Grades to which this improvement is to be constructed are shown on plans and profiles. Grade points for top of curbs, center line of streets, or center line of alleys are shown by circles on profiles. At all points between designated points the grade shall be established so as to conform to a straight line drawn between said designated points.
Elevations are in feet above U.S.C.S. datum or mean sea level.
This drawing and the data hereon are hereby made a part of the specifications.
Work shall be constructed according to specifications on file in the office of the County Engineer and shall be prosecuted only in the presence of the County Engineer.
Before work can be started, the contractor must obtain a permit to excavate in County streets from the L.A. County Road Dept., 108 W. 2nd St. and make a deposit with the County Engineer, 733 L.A. County Engineering Building, sufficient to cover the cost of construction inspection and record plans.
Approval of this plan by the County of Los Angeles does not constitute a representation as to the accuracy of the location of or the existence of any underground utility, pipe, or structure within the limits of this project. This note applies to all sheets.
If work is to be done in a State Highway, a permit must be obtained from the State of California, Division of Highways, 120 South Spring Street.

COUNTY OF LOS ANGELES, CALIFORNIA

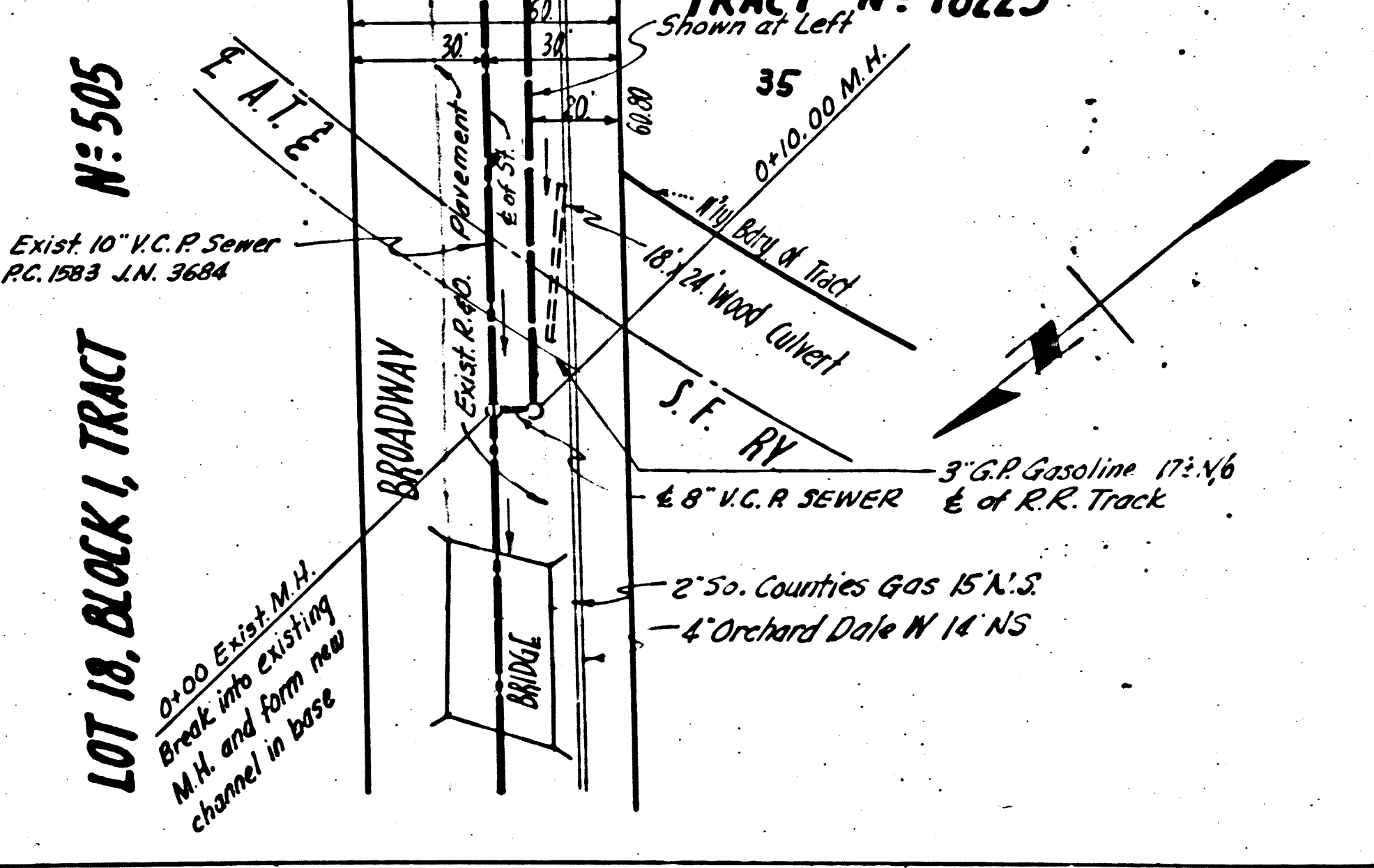
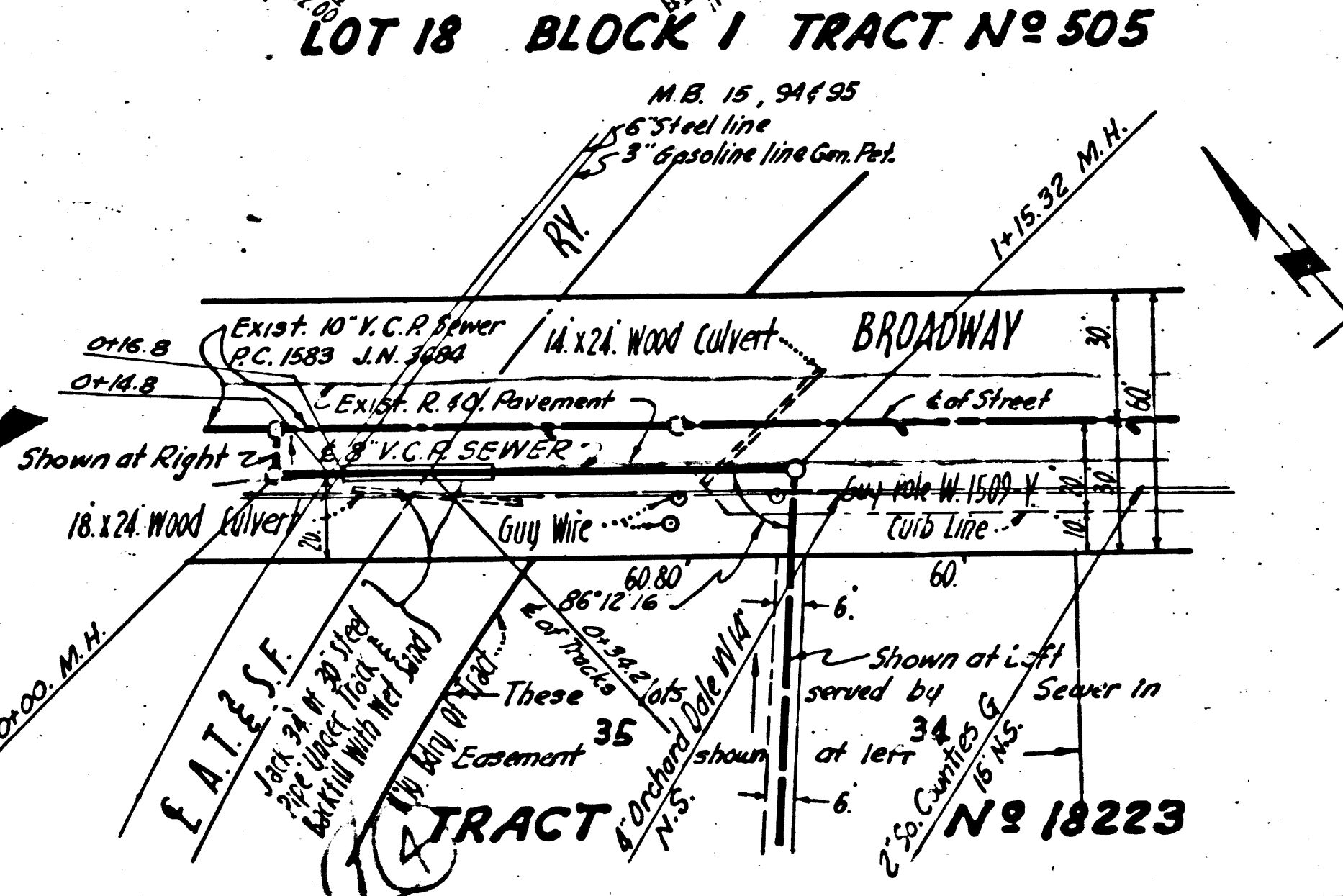
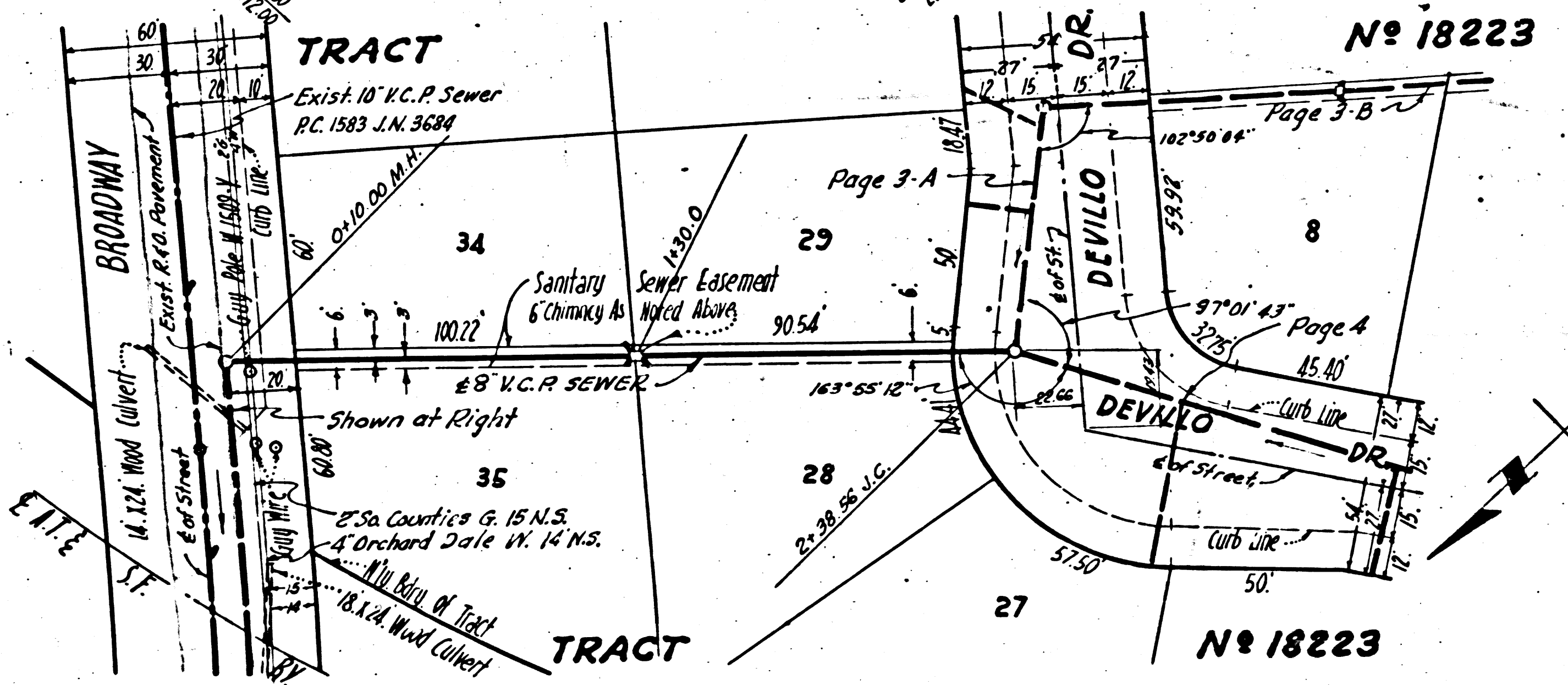
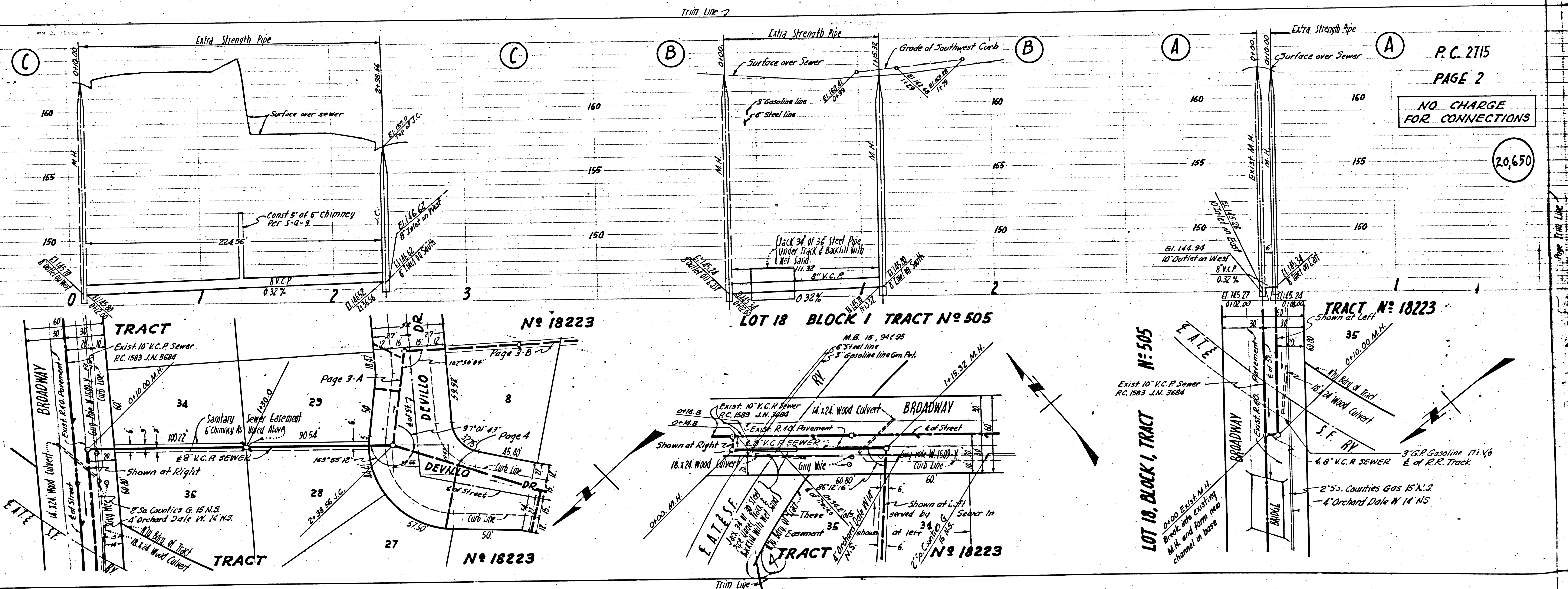
Approved, William J. Fox, County Engineer
Approved, A. M. Rawn, CHIEF ENGINEER, SAN. DIST. NO. 18
By *A.P. Collins* Sanitation Engineer
Checked By: *reid* 2-23-55
Office of County Engineer, Reg. C. E. No. 7860.

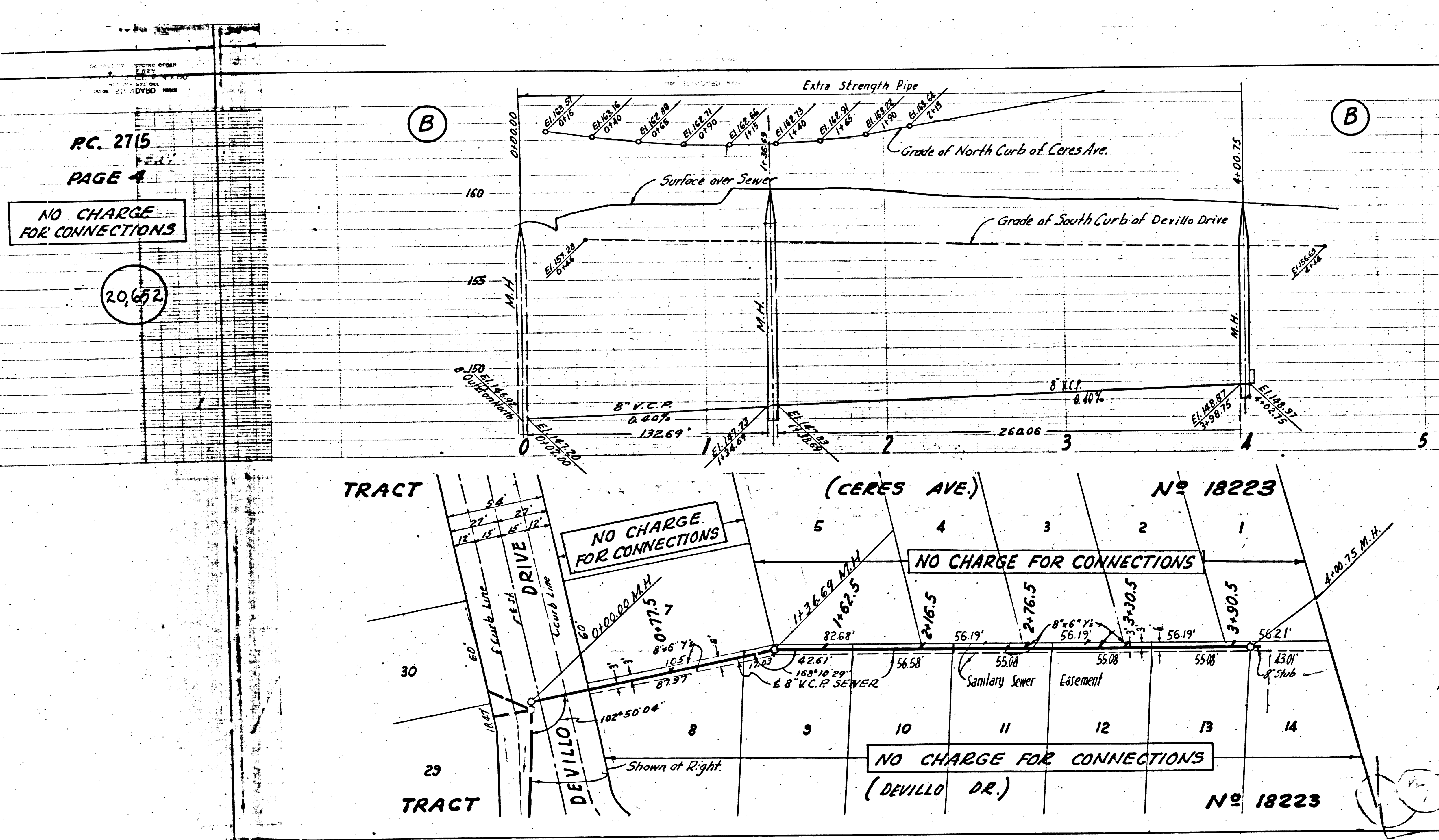
Revision 2
Curb Grades Revised.
Approved: *3.V. Dike* Date: 2-18-55
Office of County Engineer, Reg. C. E. No. 7860.

checked 6-15-55 W.S. Green

P.C. 2715 10-27-5105
TRACT NO 18223
P.C. 2715
215.09

2715
GE 3
CHARGE CONNECTIONS
20,651

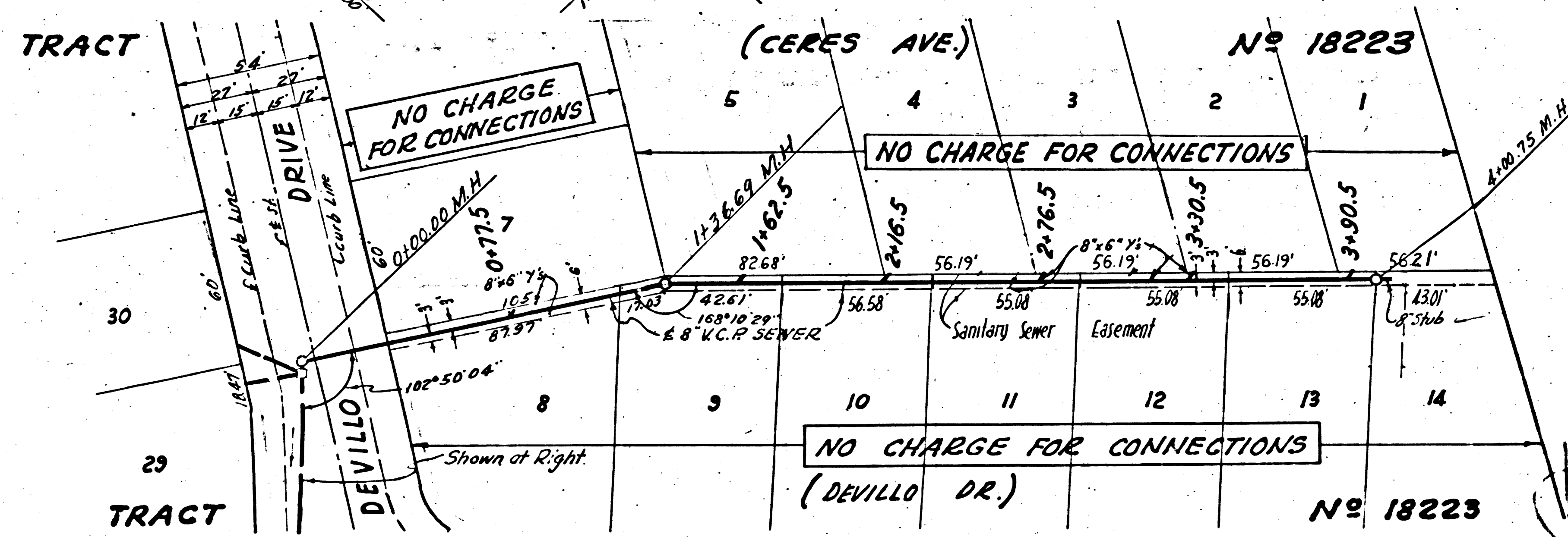




PC. 2715
PAGE 4

NO CHARGE
FOR CONNECTIONS

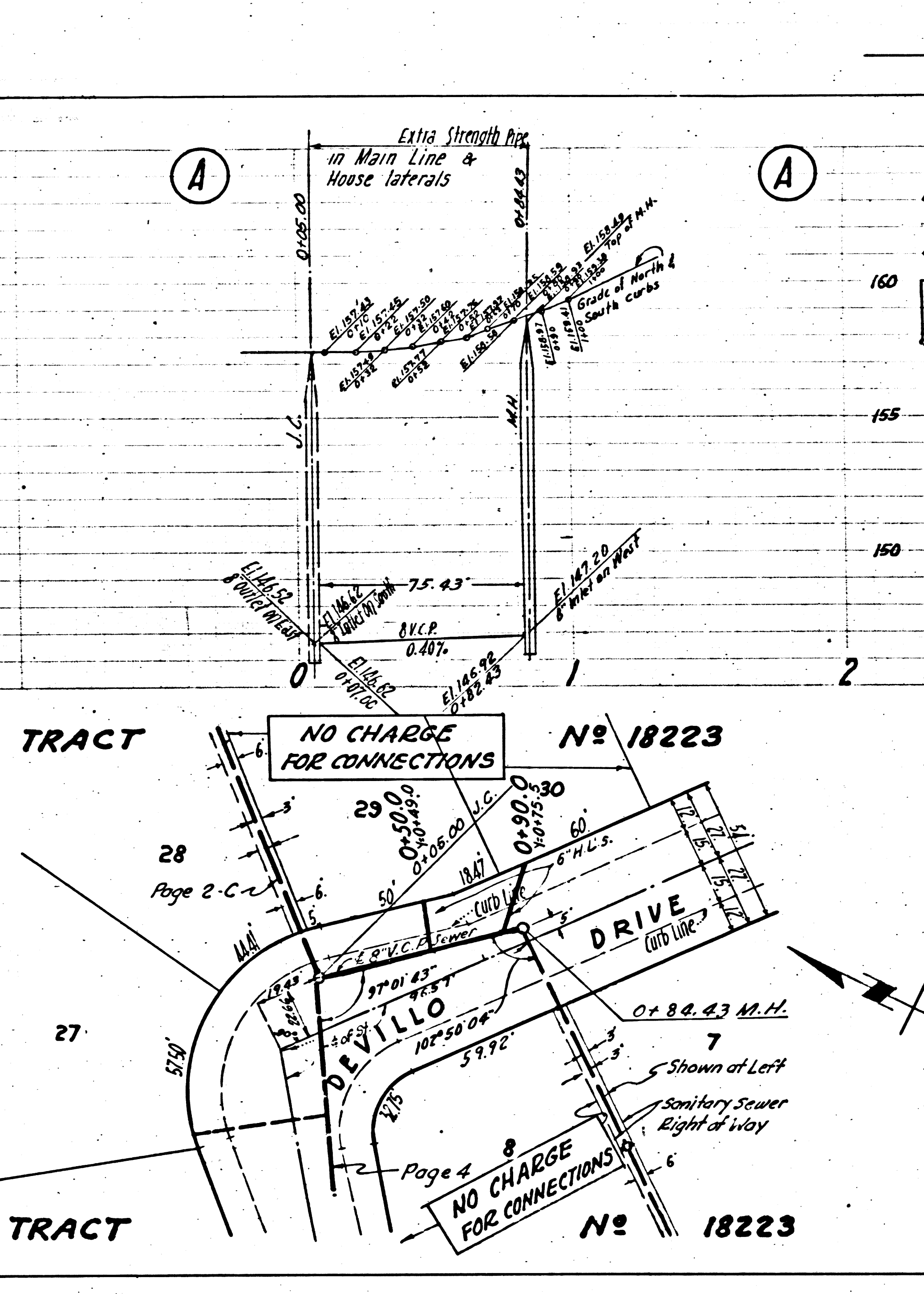
20,652



NO CHARGE
FOR CONNECTIONS

NO CHARGE
FOR CONNECTIONS

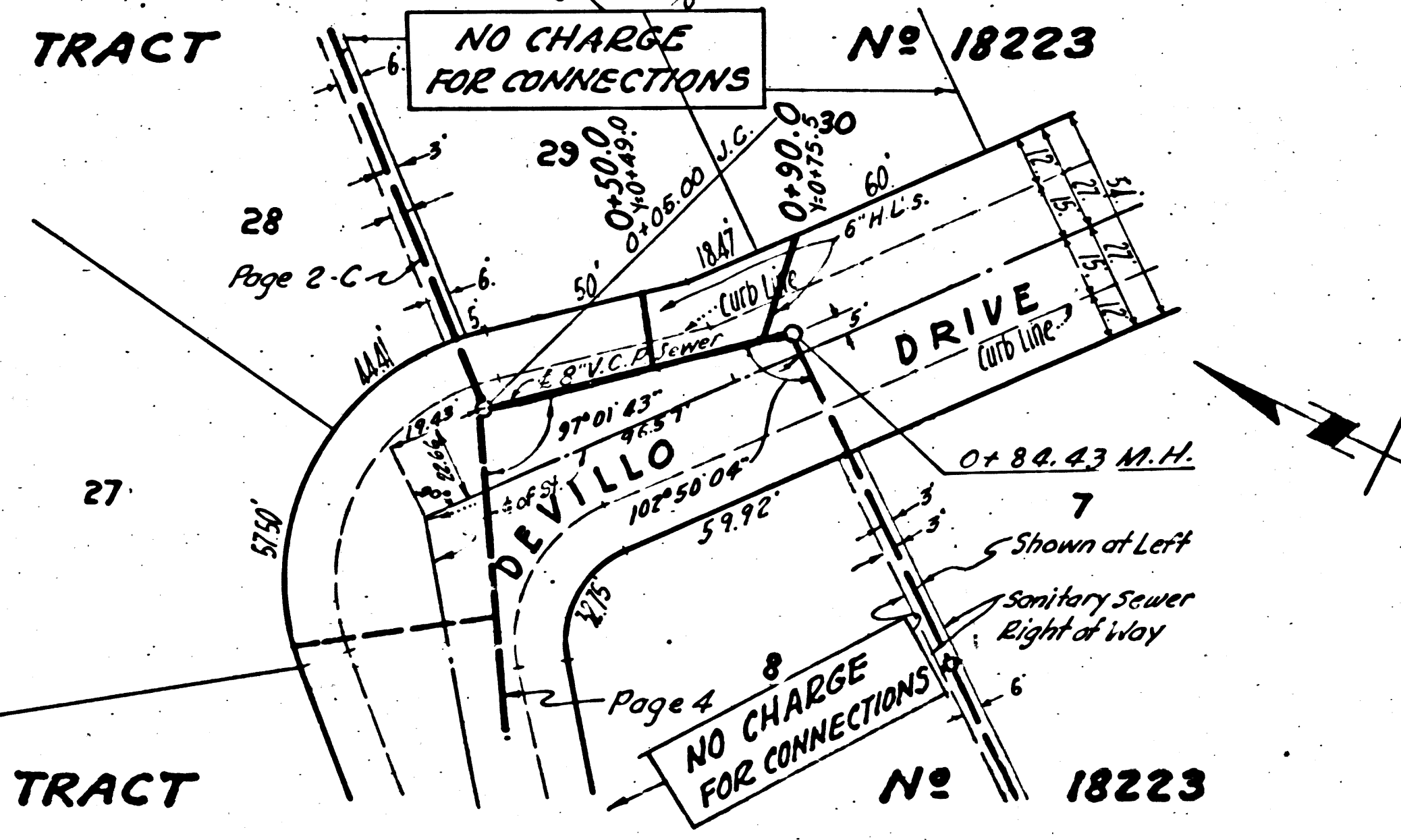
NO CHARGE
FOR CONNECTIONS



PC. 2715
PAGE 3

NO CHARGE
FOR CONNECTIONS

20,651



NO CHARGE
FOR CONNECTIONS

NO CHARGE
FOR CONNECTIONS

P.C. 2715
PAGE 5

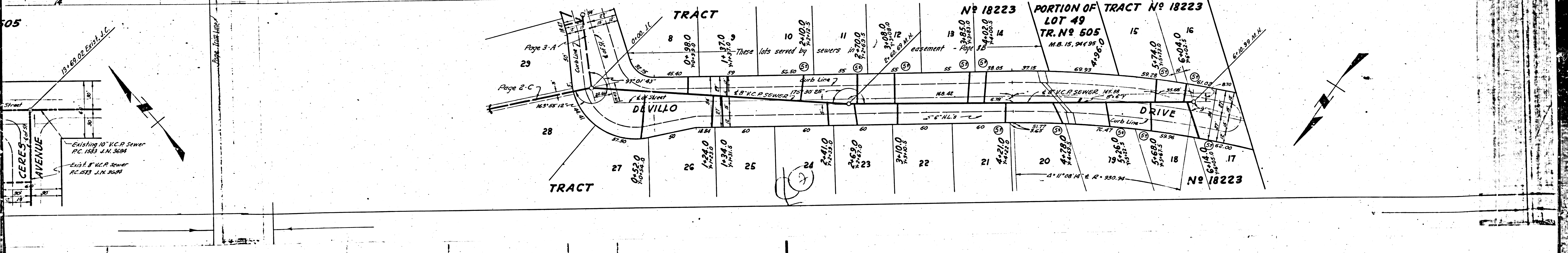
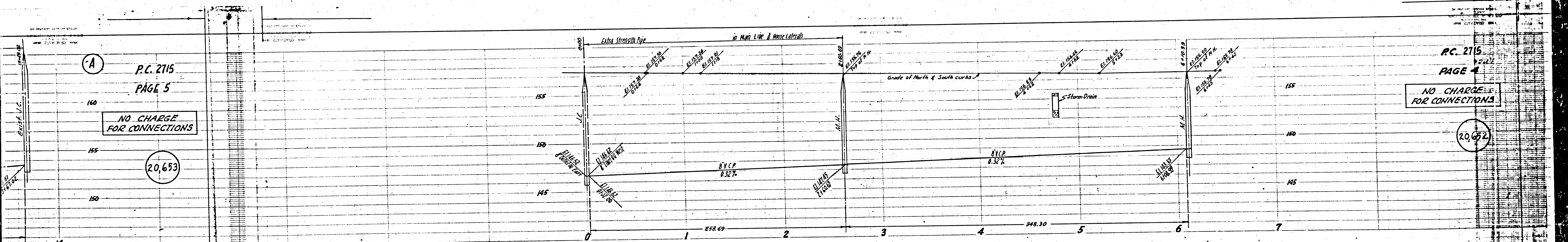
NO CHARGE
FOR CONNECTIONS

20,653

P.C. 2715
PAGE 4

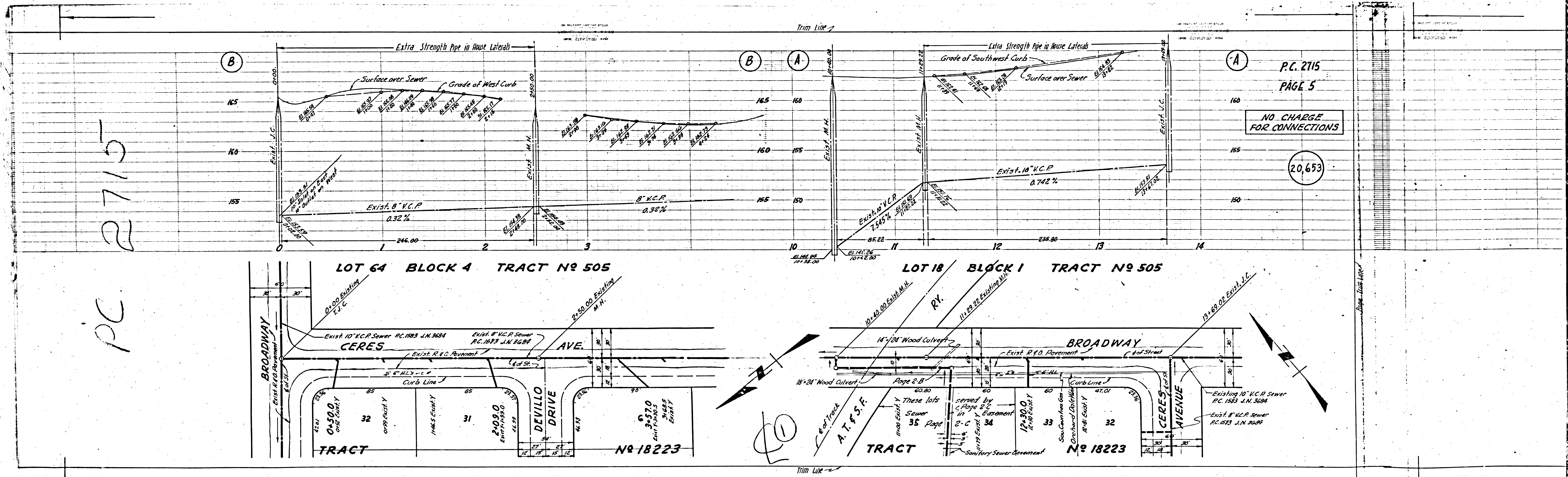
NO CHARGE
FOR CONNECTIONS

20,652



2715

PC



P.C. 2715
PAGE 5

NO CHARGE
FOR CONNECTIONS

20,653