

ALTADENA BLDG. DIST. NO. 3

PROFILE, ALIGNMENT AND GRADE OF
SANITARY SEWERS
 TO BE CONSTRUCTED IN
 RIGHTS OF WAY
 IN LOTS 10 & 11 BLK. E, TRACT NO 875

PC 2728
 J.N.F.649
 Page 1

(17,998)

PRIVATE CONTRACT NO 2728
 W.S. 44

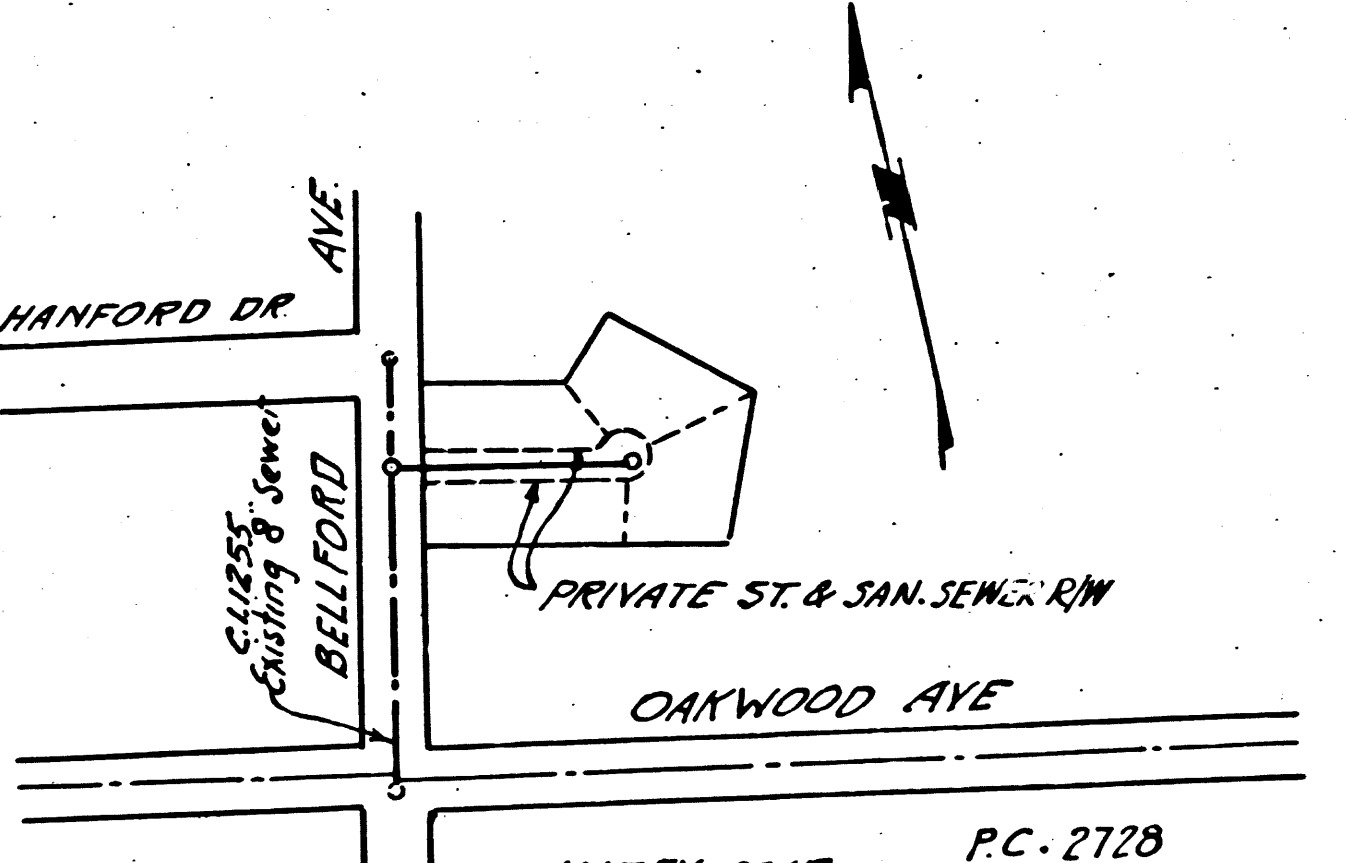
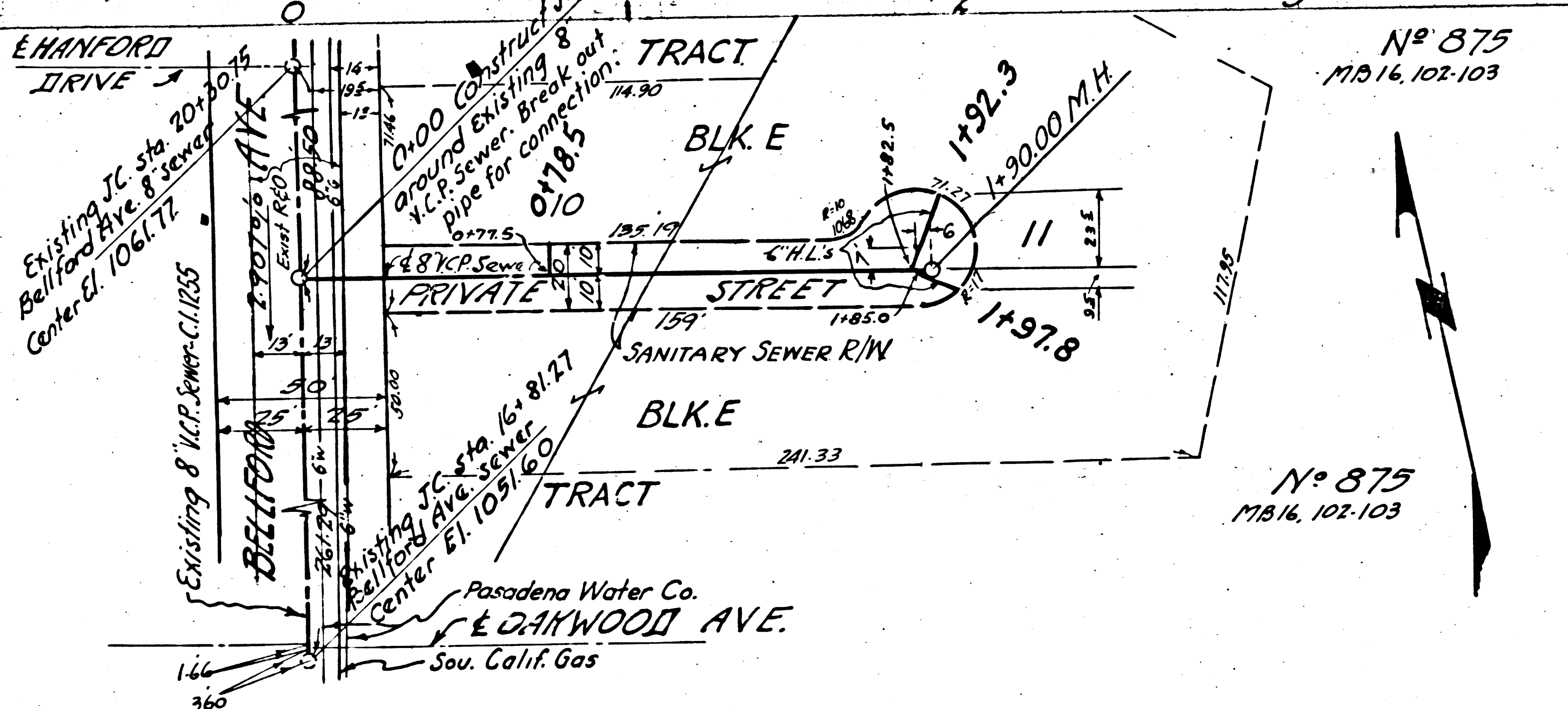
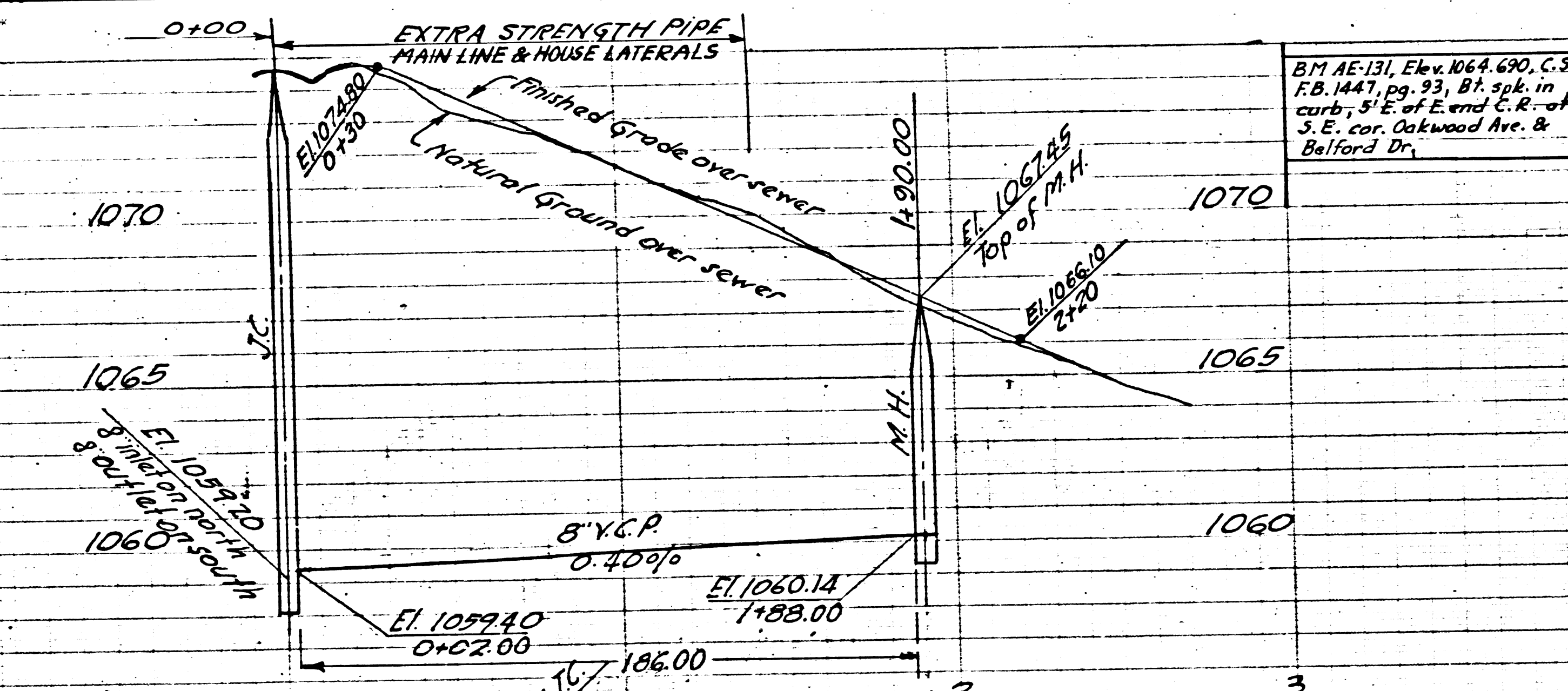
SCALE: VERT. 1"=4'
 HOR. 1"=40'

JUNE 1953
 PREPARED IN ENGINEERING OFFICE OF
 CHAS. H. BELL
 By: *G. H. ...*
 Reg. CE. No. 2839

FOR LEGEND SEE PLAN NO. S-9-54

- NOTE:**
- PROVIDE STAKES ON THE PROPERTY LINES OR PROPERTY LINES PRODUCED AT RIGHT ANGLES TO THE SEWER LINE AT THE CENTER LINE OF EACH MANHOLE.
 - NO REPRESENTATIVE OF THE COUNTY ENGINEER WILL SURVEY OR LAY OUT ANY PORTION OF THE WORK.
 - THE OWNER OR HIS AUTHORIZED REPRESENTATIVE SHALL FURNISH THE COUNTY ENGINEER WITH GRADE SUCES AND STATIONS FOR ALL HOUSE LATERALS AND Y BRANCHES AND SHALL PROVIDE STAKES FOR THEM AT THEIR PROPER LOCATIONS WITH STATIONING PLAINLY MARKED. ANY CHANGE IN LOCATION SHALL BE REQUESTED IN WRITING BY THE OWNER OR HIS REPRESENTATIVE. NO REVISIONS SHALL BE MADE IN THESE PLANS WITHOUT APPROVAL OF THE COUNTY ENGINEER.
 - USE STANDARD MANHOLE FRAMES AND COVERS, S-9-112.
 - USE STANDARD STRENGTH PIPE, EXCEPT AS NOTED.
 - USE CEMENT MORTAR FOR ALL VITRIFIED CLAY PIPE JOINTS.
 - RETURN ALL TRENCH WITH FINISHED AREA TO MEET L.A. COUNTY ROAD DEPT. OR CALIFORNIA STATE HWY. DEPT. REQUIREMENTS IN ACCORDANCE WITH PERMIT.
 - ENCASE FOUR FEET OF SEWER AT POINTS OF INTERFERENCE WITH POLES S-9-113.
 - HOUSE LATERALS TO BE CONSTRUCTED WITH INVERTS AT PROPERTY LINE 6 FEET BELOW FINISHED GRADE.
 - ALL STRUCTURES SHALL BE BRICK SEWER STRUCTURES, S-9-104.
 - FOR ALLOWABLE LEAKAGE TEST, USE FORMULA N° L, SPEC'S SEC. 51.

BM AE 131, Elev. 1064.60, C.S. F.B. 1441, pg. 23, 8 1/2" x 11" in curb; S. E. of E. and S. E. of S. E. cor. Oakwood Ave. & Belford Dr.



INDEX MAP
 SCALE 1"=200'
 PORTION OF LOTS 10 & 11, BLK. E, TR. NO. 875, M.B. 16, 102-103

COUNTY OF LOS ANGELES, CALIFORNIA.
 APPROVED, WILLIAM J. FOX, COUNTY ENGINEER
 By: *W. J. Fox*
 Asst. Chief Deputy
 Approved, A.M. RAWN
 Chief Engr. Co. San Dist No. 17
 By: *A.M. Rawn*
 Office Engineer
 Checked By: *R. E. ...*
 Office of County Engineer R.S. CE No. 7660

PC 2728
 8555 29
 7W 2842

PC 2728
 8555 29
 7W 2842