

PC. 2734
J.N.F655
PAGE 2

17,548

B.M. 19-17 Elev. 302.38
L.A. Co. monument 17.2' N.
of E. Lower Azusa Rd.
and 71.3' E. of E. El Monte Ave.

- NOTE:** PROVIDE STAKES ON THE PROPERTY LINES OR PROPERTY LINES PRODUCED AT RIGHT ANGLES TO THE SEWER LINE AT THE CENTER LINE OF EACH MANHOLE. NO REPRESENTATIVE OF THE COUNTY ENGINEER WILL SURVEY OR LAY OUT ANY PORTION OF THE WORK.
- THE OWNER OR HIS AUTHORIZED REPRESENTATIVE SHALL FURNISH THE COUNTY ENGINEER WITH GRADE SHEETS AND STATIONS FOR ALL HOUSE LATERALS AND Y-BRANCHES AND SHALL BRING STAKES FOR THEM AT THEIR PROPER LOCATIONS WITH STATIONING PLAINLY MARKED. ANY CHANGE IN LOCATION SHALL BE REQUESTED IN WRITING BY THE OWNER OR HIS REPRESENTATIVE. NO REVISIONS SHALL BE MADE IN THESE PLANS WITHOUT APPROVAL OF THE COUNTY ENGINEER.
1. USE STANDARD MANHOLE FRAMES AND COVERS, 5-4-117, EXCEPT AS NOTED.
 2. USE STANDARD STRENGTH PIPE.
 3. USE CEMENT MORTAR FOR ALL VITRIFIED CLAY PIPE JOINTS.
 4. RESURFACE ALL TRENCH WITHIN PAVED AREA TO MEET L.A. COUNTY ROAD DEPT. OR CALIF. STATE HWY DEPT. REQUIREMENTS IN ACCORDANCE WITH PERMIT.
 5. INCREASE FOUR FEET OF SEWER AT POINTS OF INTERFERENCE WITH POLES 5-2-418.
 6. HOUSE LATERALS TO BE CONSTRUCTED WITH INVERTS AT PROPERTY LINE 6 FEET BELOW CURB GRADE, EXCEPT AS NOTED.
 7. ALL STRUCTURES SHALL BE BRICK SEWER STRUCTURES, 5-a-104, EXCEPT AS NOTED.
 8. FOR ALLOWABLE LEAKAGE TEST, USE FORMULA NO. 1, SPEC'S SEC. 51.
 9. MANHOLE TOPS IN UNIMPROVED RIGHTS OF WAY TO BE 6" ABOVE FINISHED GRADE.

PROFILE, ALIGNMENT AND GRADE OF SANITARY SEWERS TO BE CONSTRUCTED IN

PC. 2734
J.N.F655
Page 1

TRACT NO 19189

17,547

PRIVATE CONTRACT NO 2734
W.S. 44
SHEET ONE OF TWO SHEETS

SCALE: VERT. 1"=40'
HORIZ. 1"=40' DATE: JUNE 1953

PREPARED IN THE OFFICES OF
W. A. TREADWELL, JR.

BY Wm. Treadwell, Jr. REG. C.E. NO. 10

FOR LEGEND SEE PLAN NO 5-a-64

NOTE: GRADES TO WHICH THIS IMPROVEMENT IS TO BE CONSTRUCTED ARE SHOWN IN PLANS AND PROFILES. GRADE POINTS FOR TOP OF CURB, CENTER LINE OF STREET OR CENTER LINE OF ALLEY ARE SHOWN BY CIRCLES ON PROFILE AT ALL POINTS BETWEEN DESIGNATED POINTS. THE GRADE SHALL BE ESTABLISHED SO AS TO CONFORM TO A STRAIGHT LINE DRAWN BETWEEN SAID DESIGNATED POINTS. ELEVATIONS ARE IN FEET ABOVE U.S.G.S. DATUM OR MEAN SEA LEVEL. THIS DRAWING AND THE DATA HEREON ARE HEREBY MADE A PART OF THE SPECIFICATIONS. WORK SHALL BE CONSTRUCTED ACCORDING TO SPECIFICATIONS ON FILE IN THE OFFICE OF THE COUNTY ENGINEER AND SHALL BE PROSECUTED ONLY IN THE PRESENCE OF THE COUNTY ENGINEER.

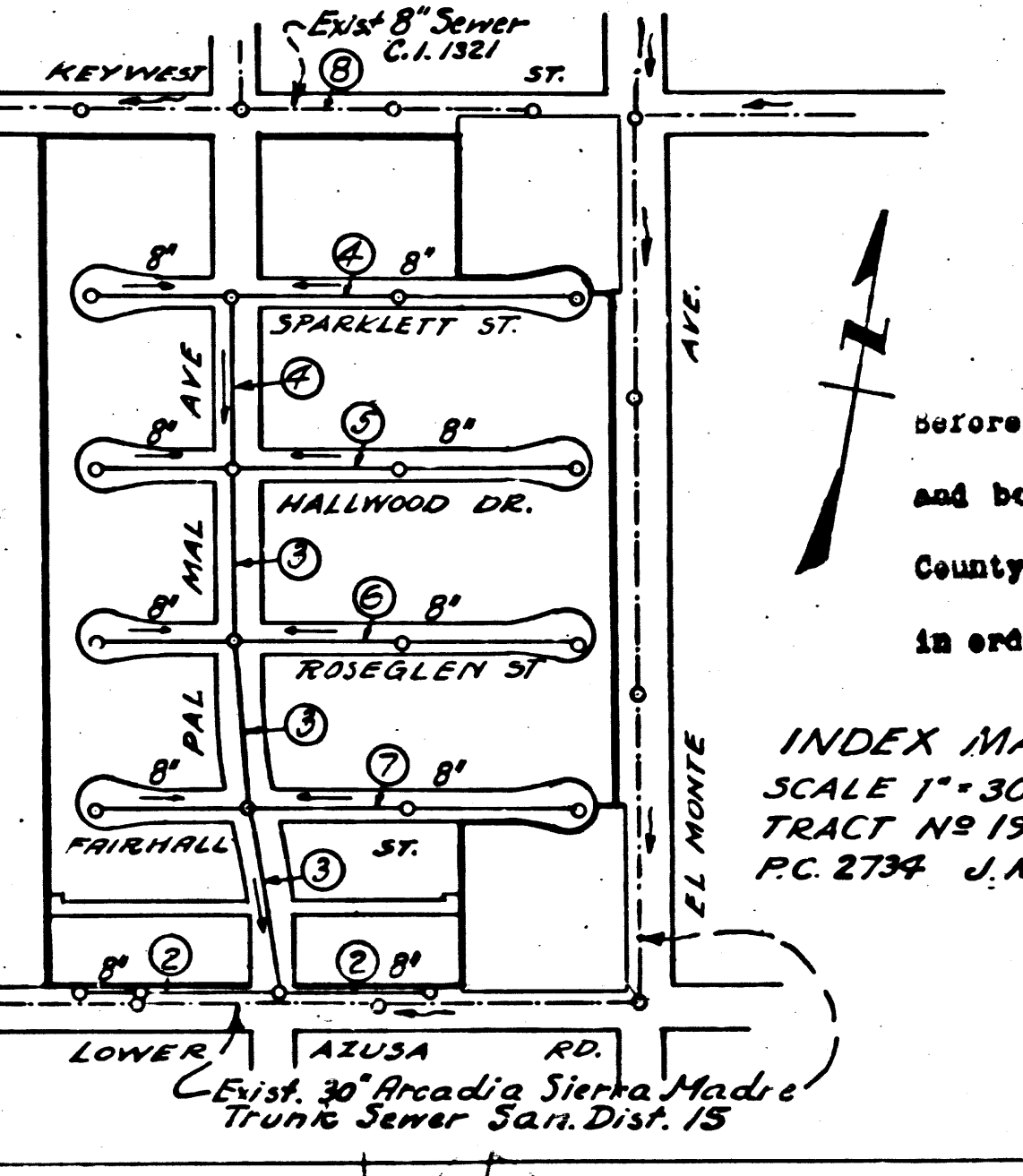
BEFORE WORK CAN BE STARTED, THE CONTRACTOR MUST OBTAIN A PERMIT TO EXCAVATE IN COUNTY STREETS FROM THE L.A. COUNTY ROAD DEPT. OR W.S. 44, AND MAKE A DEPOSIT WITH THE COUNTY ENGINEER, 733 L.A. CO. ENGR. BLDG., SUFFICIENT TO COVER THE COST OF CONSTRUCTION INSPECTION AND RECORD PLANS.

APPROVAL OF THIS PLAN BY THE COUNTY OF LOS ANGELES DOES NOT CONSTITUTE A REPRESENTATION AS TO THE ACCURACY OF THE LOCATION OR THE EXISTENCE OR NON-EXISTENCE OF ANY UNDERGROUND UTILITY PIPE OR STRUCTURE WITHIN THE LIMITS OF THIS PROJECT.

IF WORK IS TO BE DONE IN A STATE HIGHWAY, A PERMIT MUST BE OBTAINED FROM THE STATE OF CALIF. DIVISION OF HIGHWAYS, 120 So. SPRING ST.

(TEMPLE CITY BLDG. DIST. #5)

SHEET NO	PAGES
1	1-4
2	5-8



INDEX MAP
SCALE 1"=300'
TRACT NO 19189
PC 2734 J.N.F655

APPROVED, WILLIAM J. FOX, COUNTY ENGINEER
BY *[Signature]*
CHIEF DEPUTY

APPROVED, A.M. BROWN
CHIEF ENGR. CONTR. DIST. NO 15
BY *[Signature]*
OFFICE ENGINEER

CHECKED BY *[Signature]* 10-30-53
OFFICE OF COUNTY ENGINEER, REG. C.E. NO 7860

Checked 1-7-54 *[Signature]*

TRACT NO 19189

PC. 2734
J.N.F655

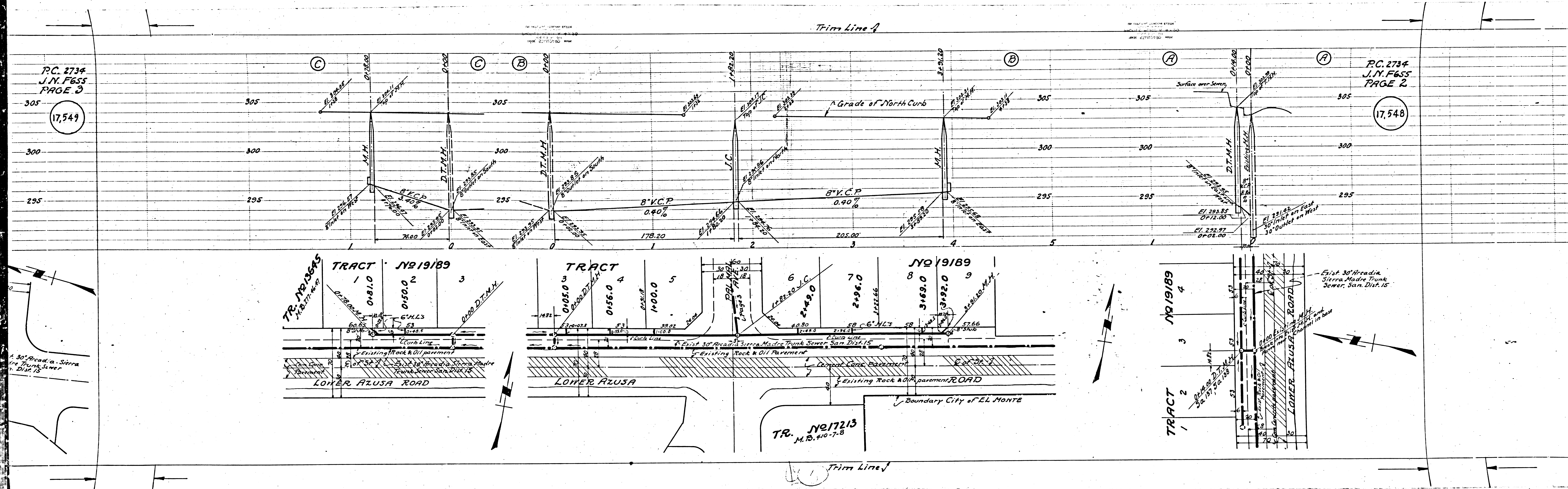
17,547

P.C. 2734
J.N. F655
PAGE 3

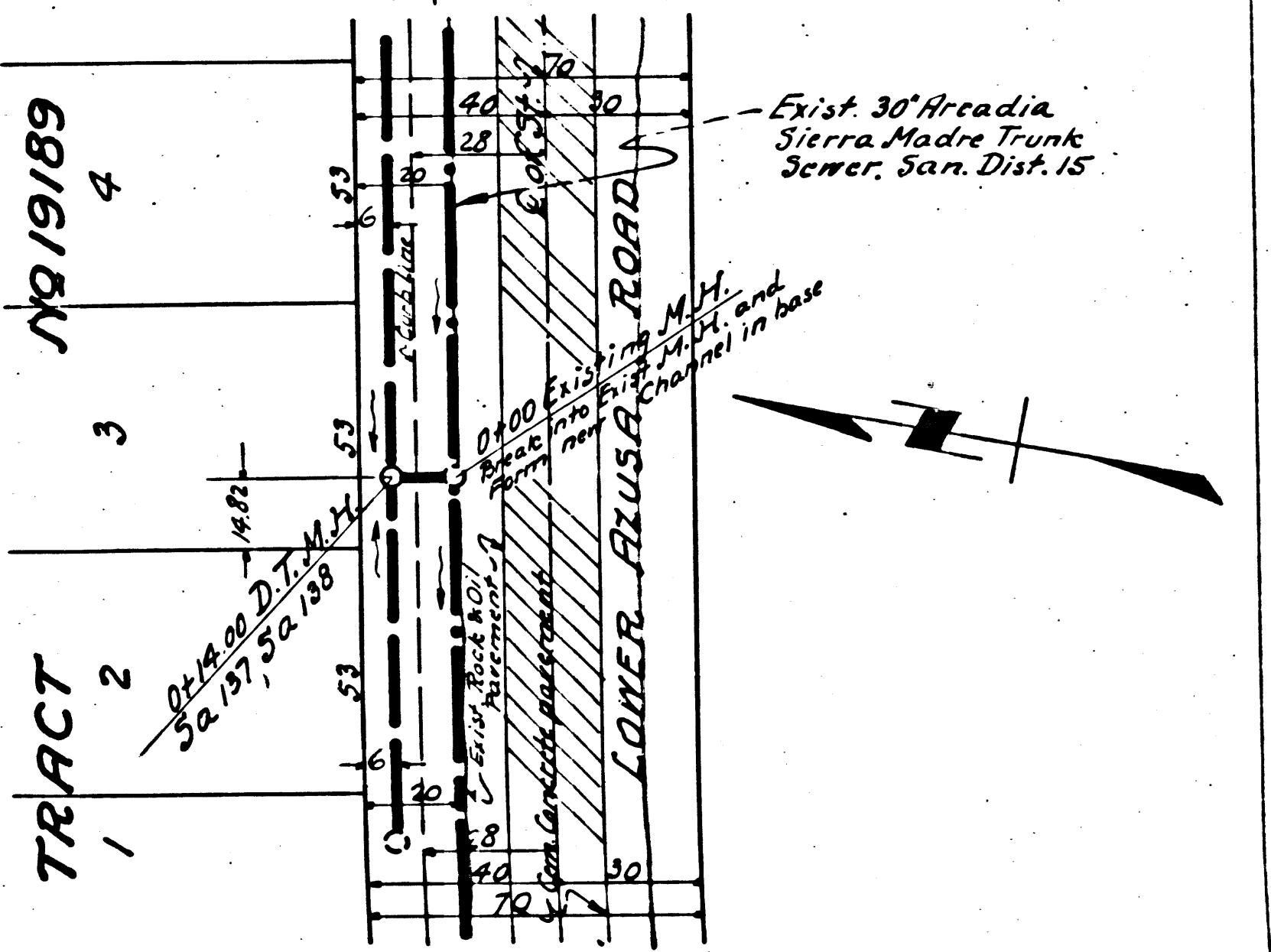
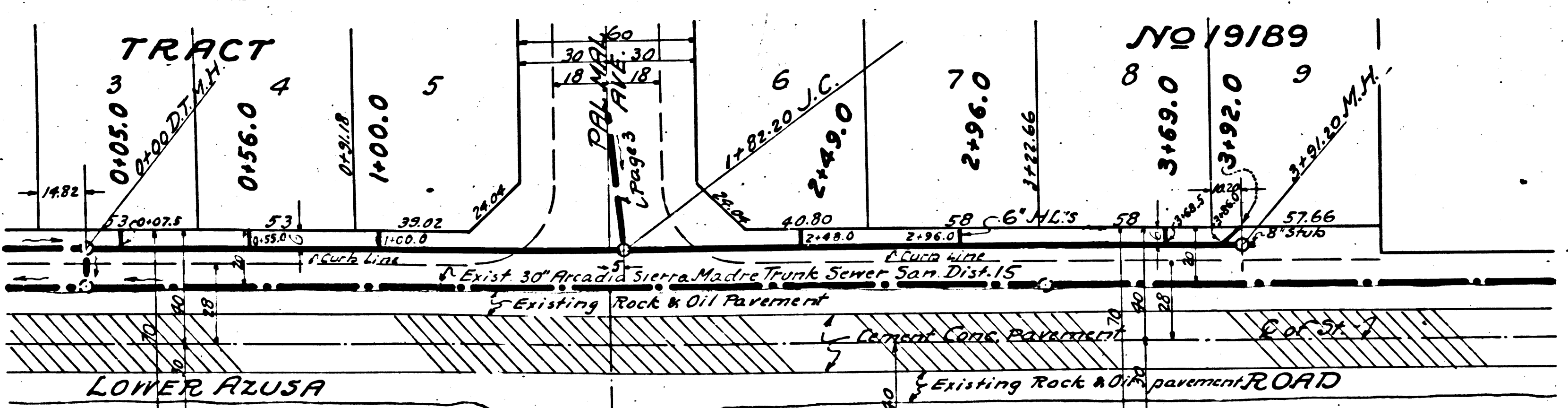
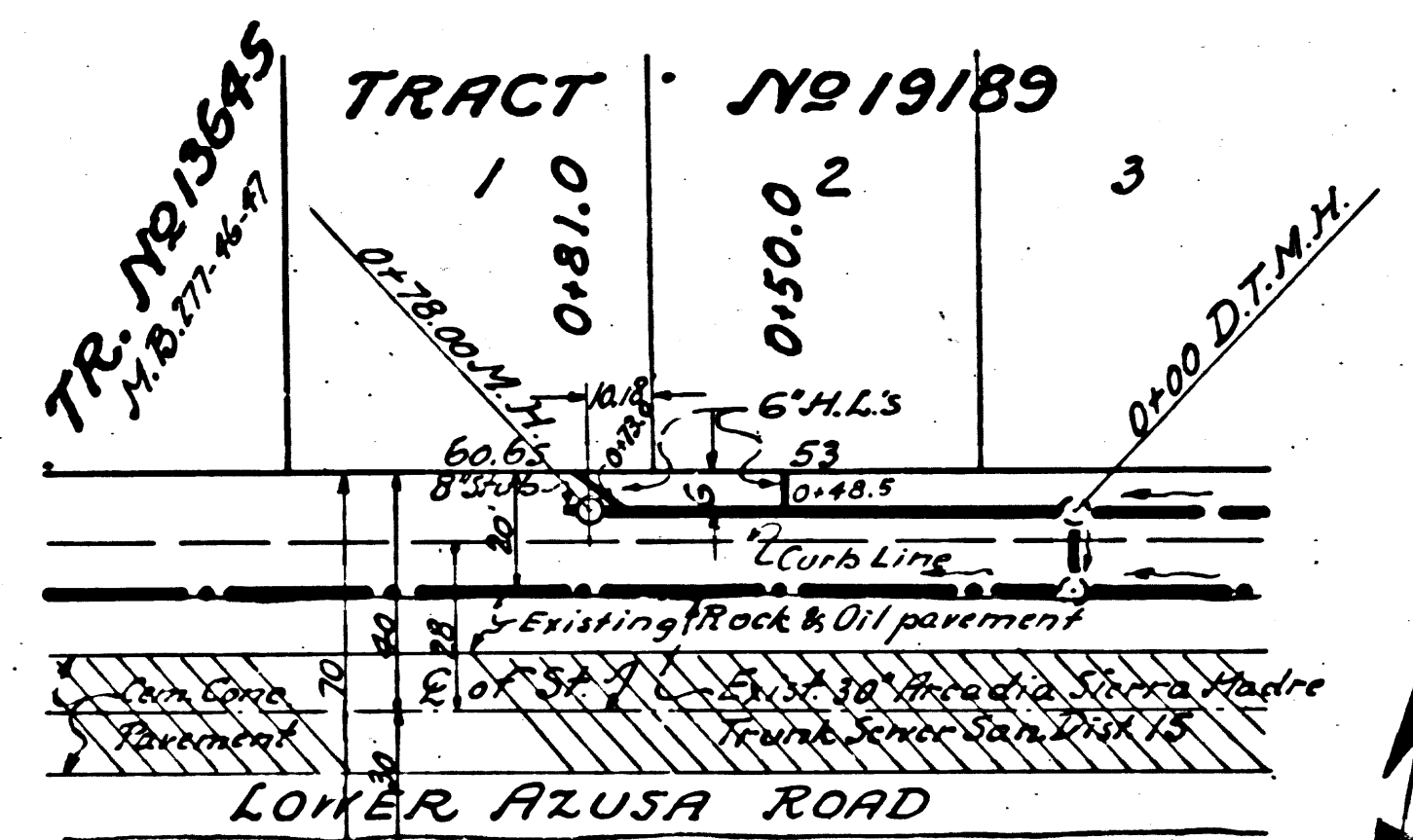
17,549

P.C. 2734
J.N. F655
PAGE 2

17,548

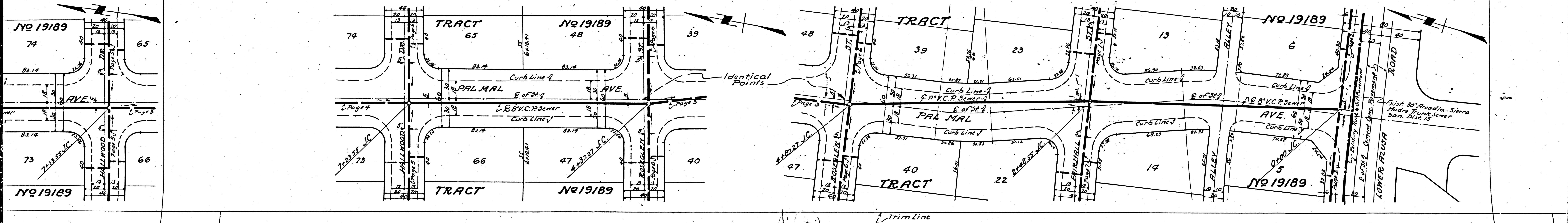
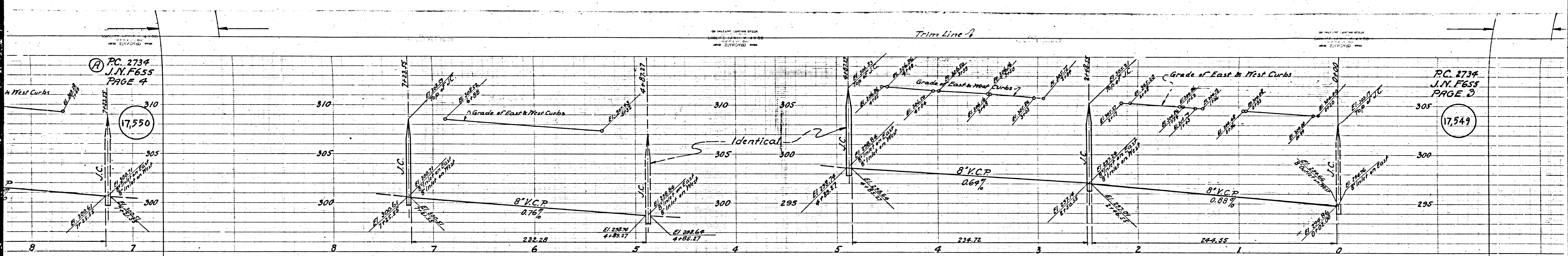


30' Radius - Sierra Madre Trunk Sewer Dist. 15



TR. No 17213
M.D. 110-7.8

Trim Line J



PC. 2734
J.N. F655
PAGE 4

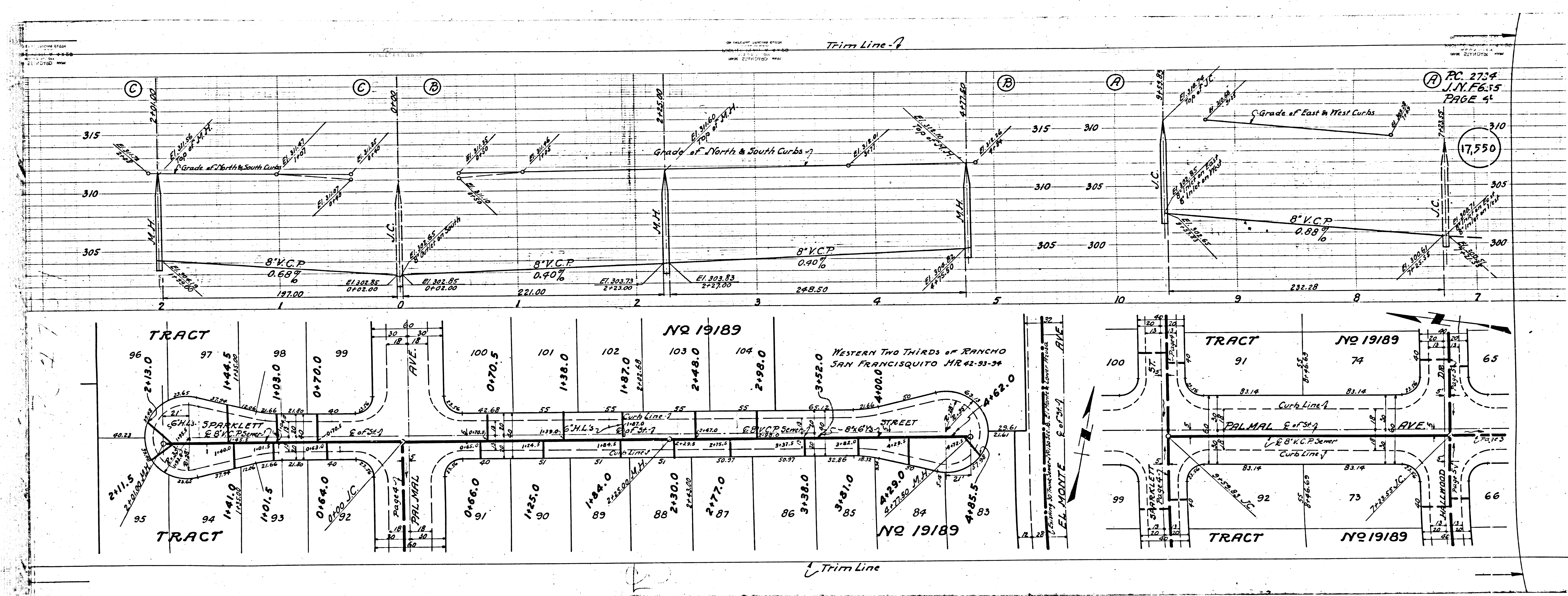
PC. 2734
J.N. F655
PAGE 5

17,550

17,549

Identical Points

Trim Line



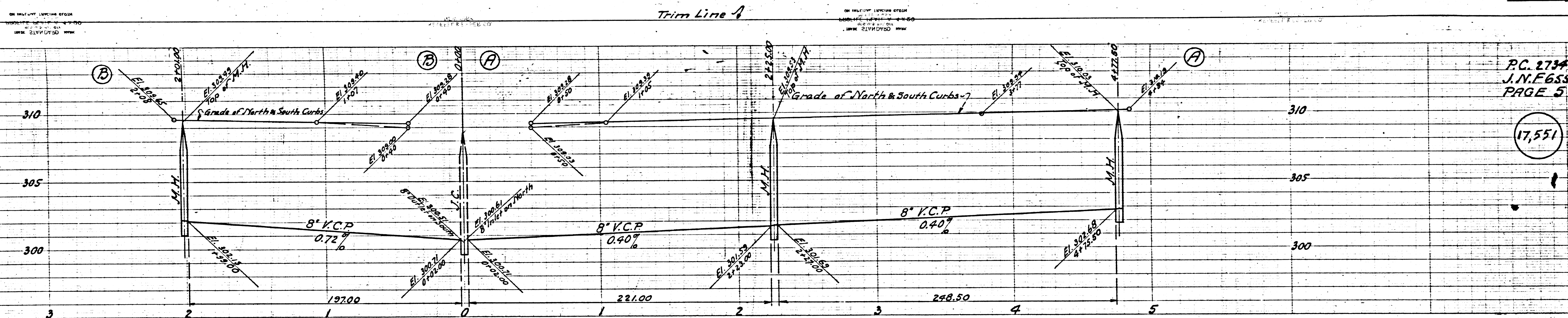
PC 2734
J.N.F. 15
PAGE 5

Trim Line - 1

Trim Line

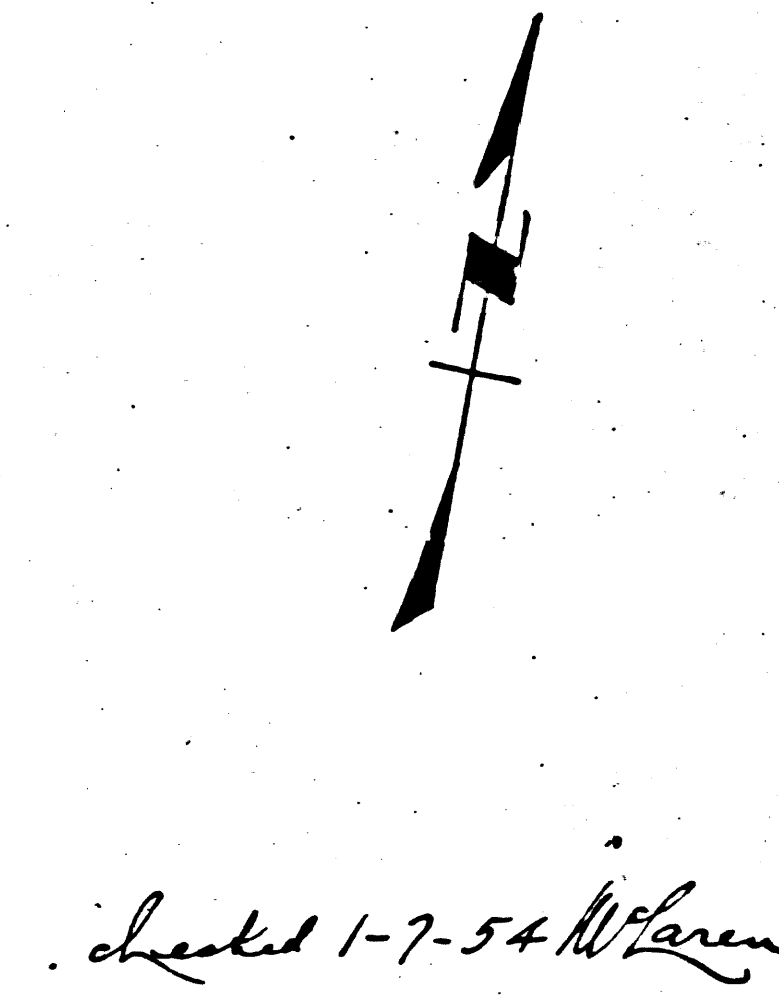
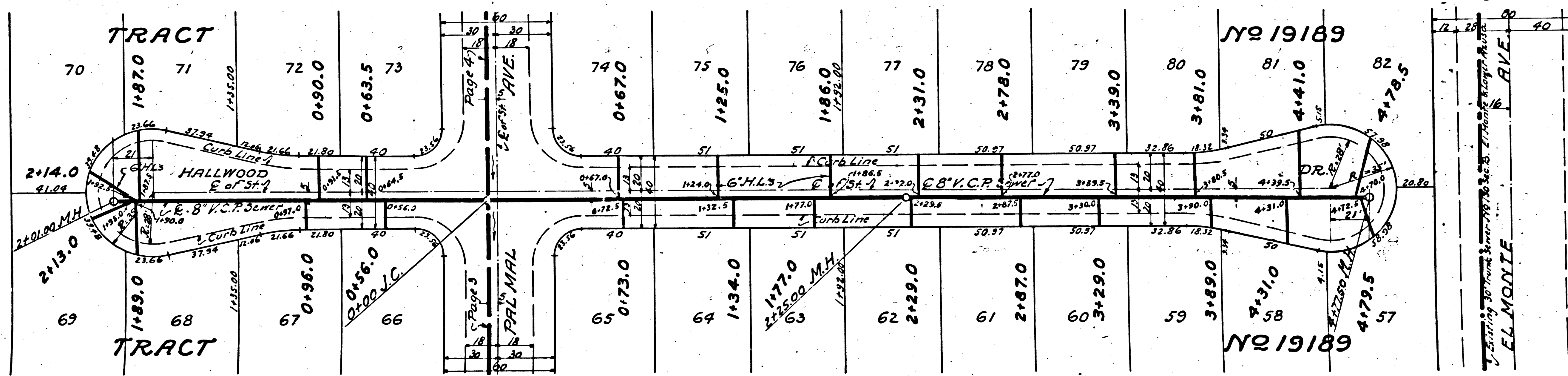
P.C. 2734
J.N.F.655
PAGE 6

17,552



P.C. 2734
J.N.F.655
PAGE 5

17,551

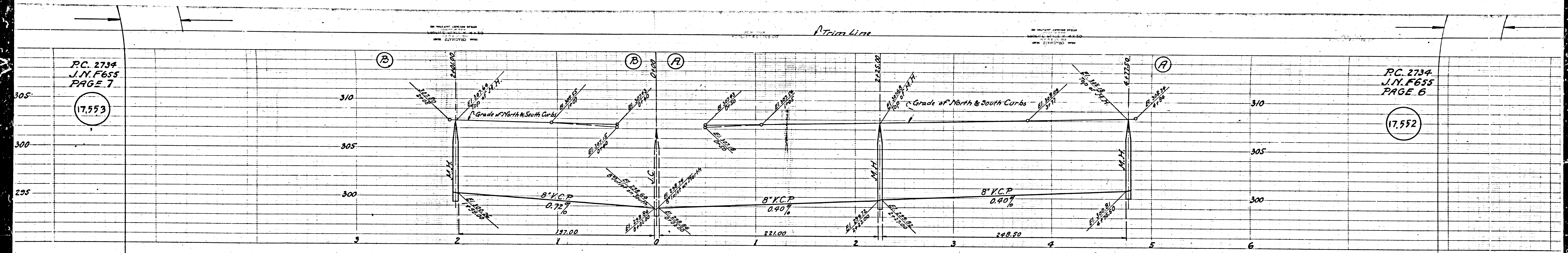


P.C. 2734
J.N.F.655

17,552

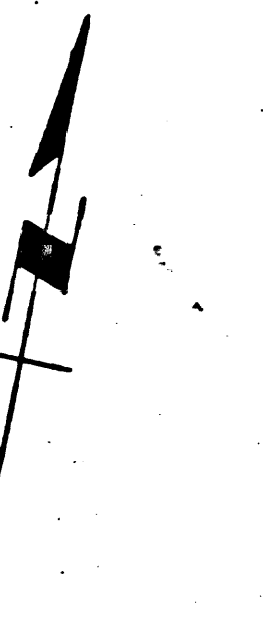
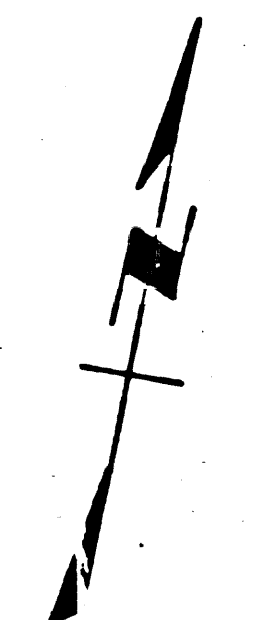
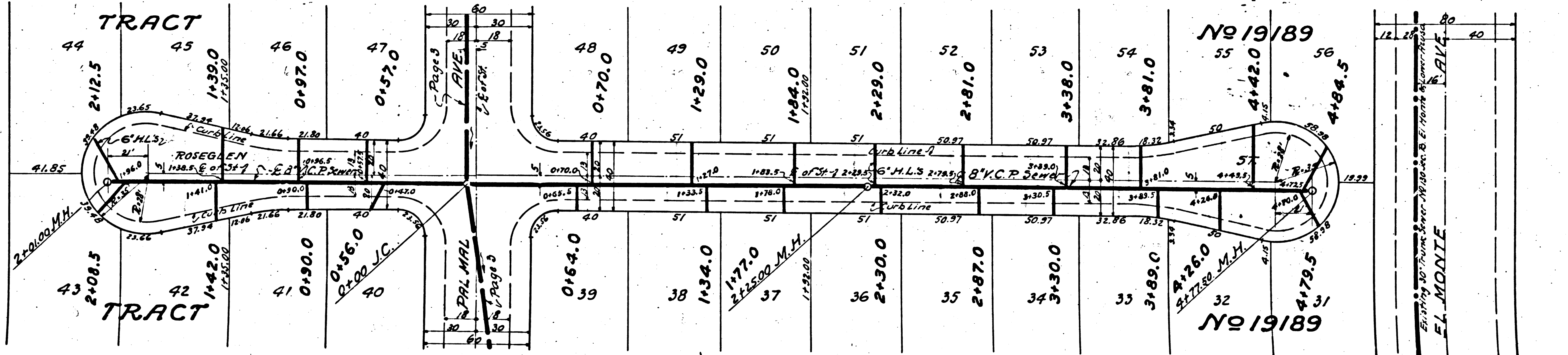
PC. 2734
J.N. F655
PAGE 7

17.553



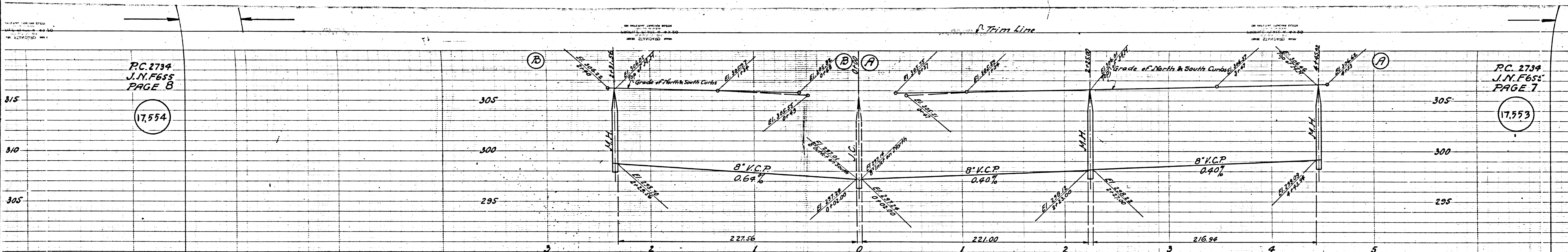
PC. 2734
J.N. F655
PAGE 6

17.552



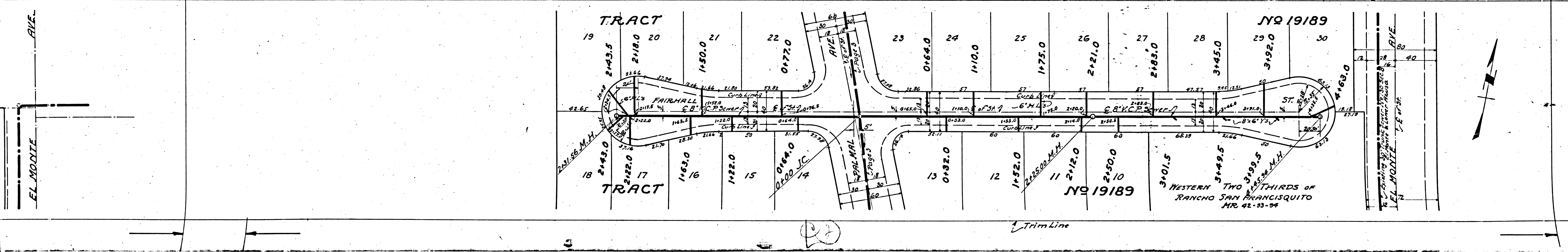
PC. 2734
J.N.F655
PAGE 8

17,554



PC. 2734
J.N.F655
PAGE 7

17,553



BY THE CITY ENGINEER
SAN FRANCISCO, CALIF., FEBRUARY 19, 1930
AND APPROVED

BY THE CITY ENGINEER
SAN FRANCISCO, CALIF., FEBRUARY 19, 1930
AND APPROVED

BY THE CITY ENGINEER
SAN FRANCISCO, CALIF., FEBRUARY 19, 1930
AND APPROVED

P.C. 2734
J.N. 655
PAGE 8

17,554

