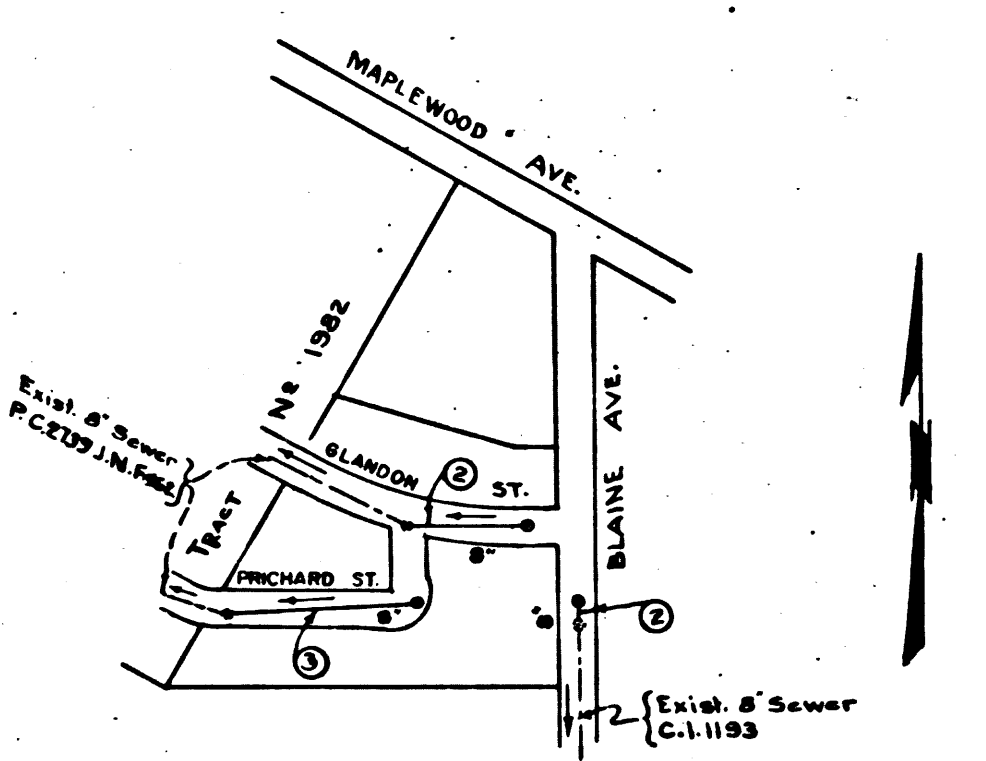


B.M. 57 2138 Elev. 82.618  
 Ardie Ave. & Maplewood Ave.  
 County Surveyors Mon. at 4 Intersection.

BELLFLOWER BLDG. DIST. No 4

- NOTE:**  
 Provide stakes on the property lines or property lines produced at right angles to the sewer line at the center line of each manhole.  
 No representative of the County Engineer will survey or layout any portion of the work. The owner or his authorized representative shall furnish the County Engineer with grade sheets and stations for all house laterals and Y branches and shall provide stakes for them at their proper locations with stationing plainly marked. Any change in location shall be requested in writing by the owner or his representative.  
 No revisions shall be made in these plans without the approval of the County Engineer.
1. Use standard manhole frames and covers, S-a-117.
  2. Use standard strength pipe except as noted.
  3. Use cement mortar for all vitrified clay pipe joints.
  4. Resurface all trench within paved area to meet L.A. County Road Dept. or Calif. State Highway Dept. requirements in accordance with permit.
  5. Encase four feet of sewer at points of interference with poles, S-a-119.
  6. House laterals to be constructed with inverts at property line...6.....feet below curb grade except as noted.
  7. All structures shall be brick sewer structures, S-a-104.
  8. For allowable leakage test, use Formula No. 1....., Specs., Sec. 51.

SHEET NO	PAGES
1	1-3



INDEX MAP  
 SCALE 1" = 400'  
 TRACT No 19281  
 P.C. 2737 J.N. F 660

checked 12-8-53 M. L. ...

PROFILE, ALIGNMENT AND GRADE OF  
 SANITARY SEWERS  
 TO BE CONSTRUCTED IN

TRACT No 19281

PRIVATE CONTRACT NO. 2737  
 W.S. 33

SHEET 1 OF 1 SHEET  
 Scale: VERT. 1" = 40'  
 HORIZ. 1" = 40' JULY, 1953

PREPARED IN THE OFFICES OF  
 VALLEY ENGINEERING CO.  
 FOR LEGEND SEE PLAN NO. S-a-64

P.C. 2737  
 J.N. F 660  
 PAGE 1

(17.399)

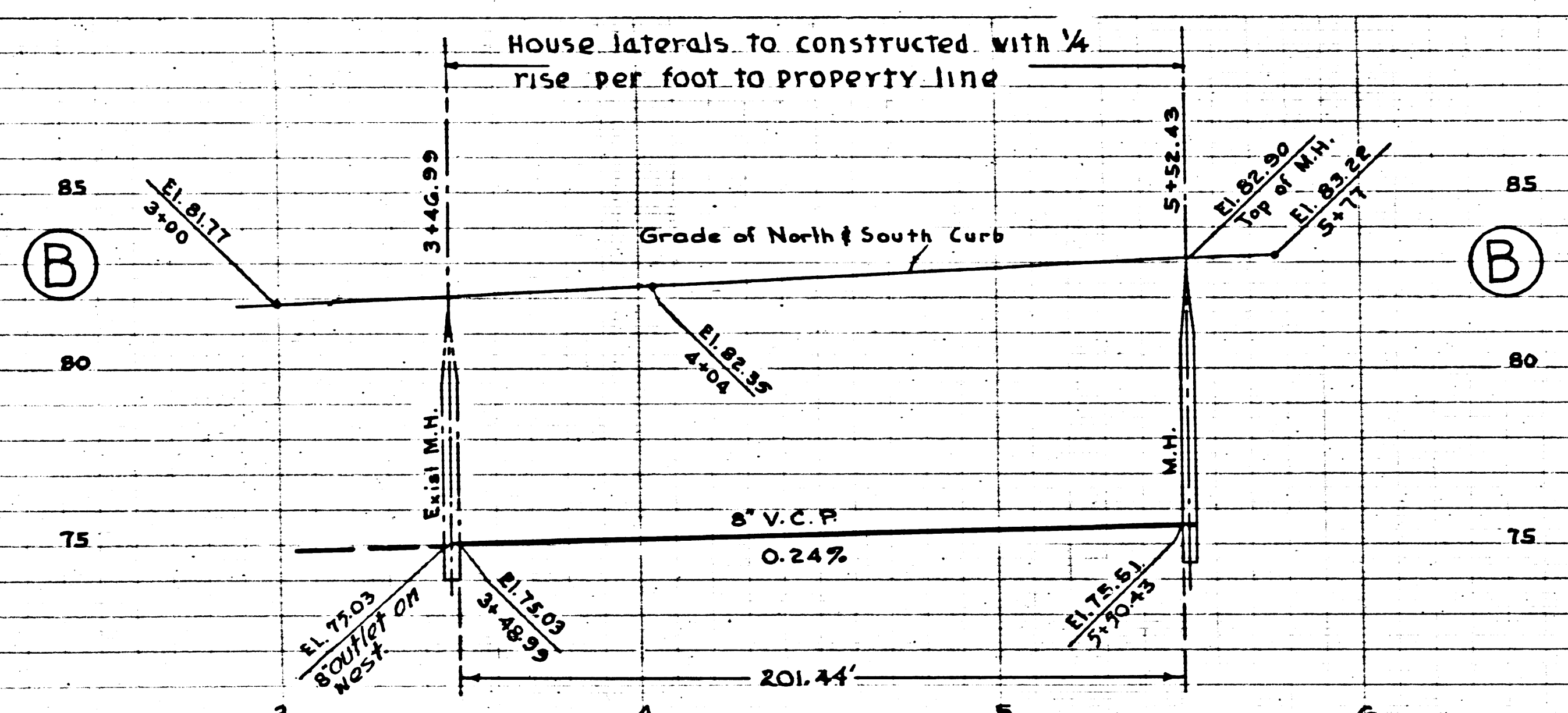
**NOTE:**  
 Grades to which this improvement is to be constructed are shown on plans and profiles. Grade points for top of curbs, center line of streets, or center line of alleys are shown by circles on profiles. At all points between designated points the grade shall be established so as to conform to a straight line drawn between said designated points.  
 Elevations are in feet above U.S.G.S. datum or mean sea level.  
 This drawing and the data hereon are hereby made a part of the specifications.  
 Work shall be constructed according to specifications on file in the office of the County Engineer and shall be prosecuted only in the presence of the County Engineer.  
 Before work can be started, the contractor must obtain a permit to excavate in County streets from the L.A. County Road Dept., 108 W. 2nd St. and make a deposit with the County Engineer, 733 L.A. County Engineering Building, sufficient to cover the cost of construction inspection and record plans.  
 Approval of this plan by the County of Los Angeles does not constitute a representation as to the accuracy of the location of or the existence or non-existence of any underground utility, pipe, or structure within the limits of this project. This note applies to all sheets.  
 If work is to be done in a State Highway, a permit must be obtained from the State of California, Division of Highways, 120 South Spring Street.

COUNTY OF LOS ANGELES, CALIFORNIA  
 Approved, William J. Fox, County Engineer  
 Approved, A. M. Rawn  
 CHIEF ENGR. CO. SAN. DIST. NO. 2  
 Chief Deputy  
 Office Engineer  
 Checked by: A. L. Simler 7-16-53  
 Office of County Engineer, Reg. C. E. No. 6562

TRACT No 19281  
 P.C. 2737  
 J.N. F 660  
 0557 N/L



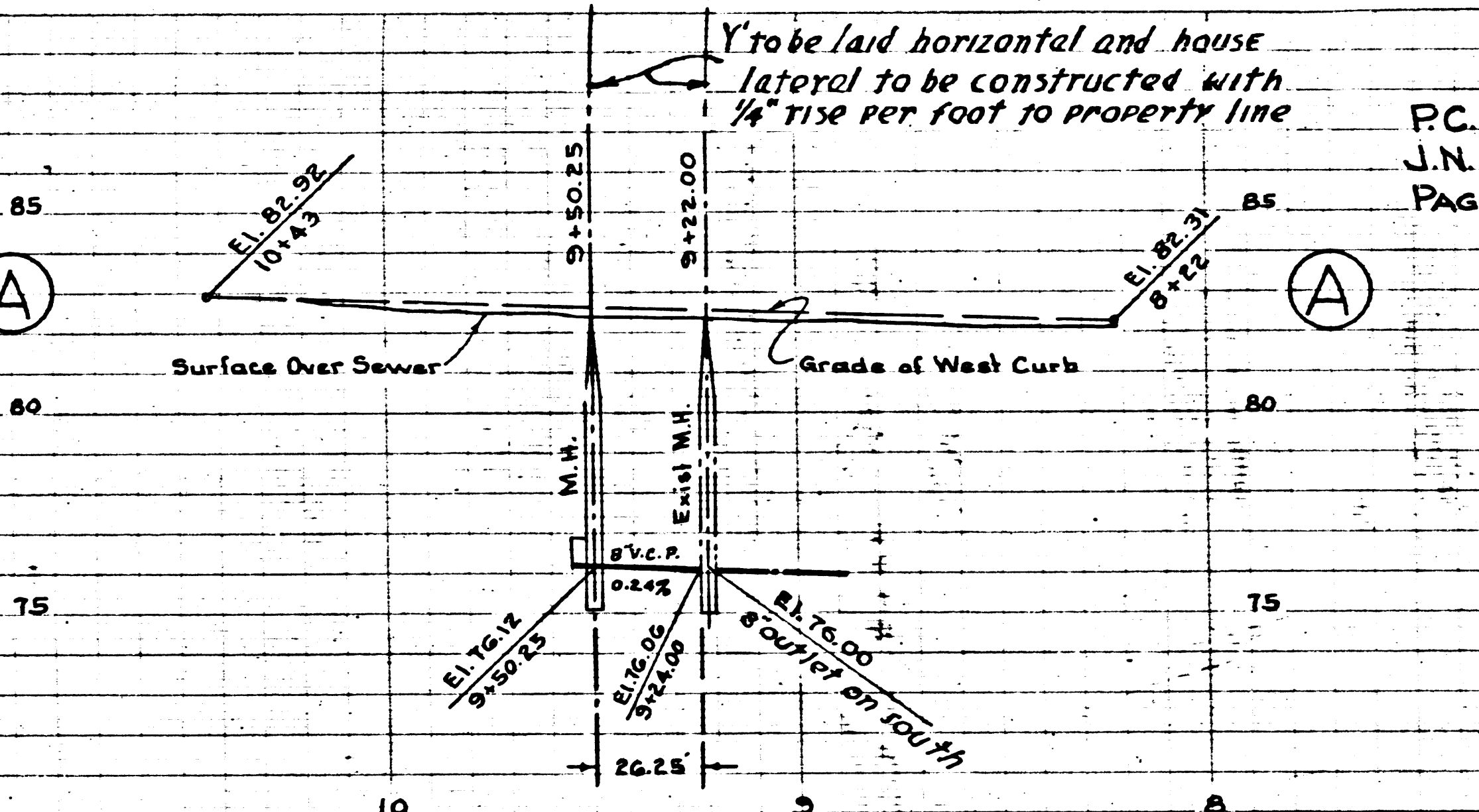
17,401



(B)

(B)

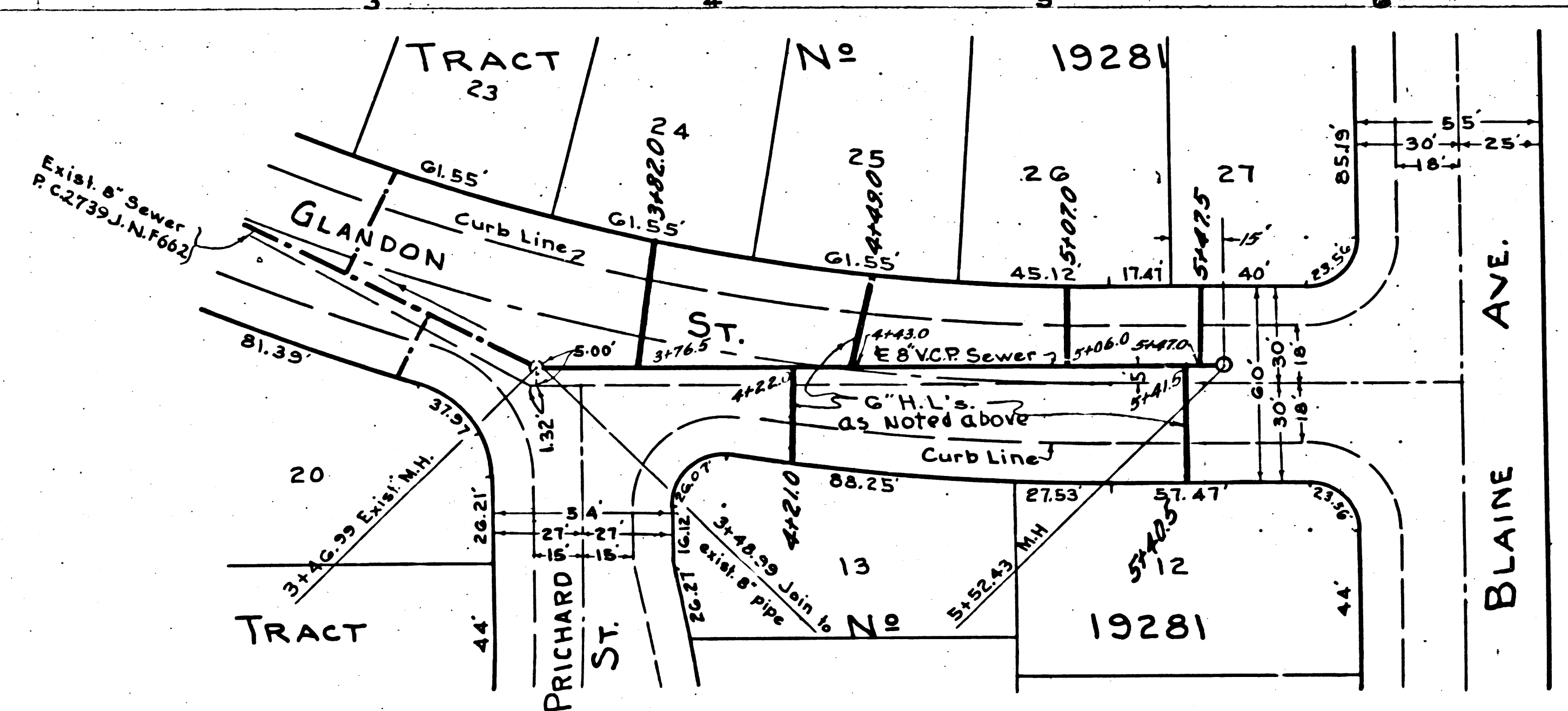
17,400



(A)

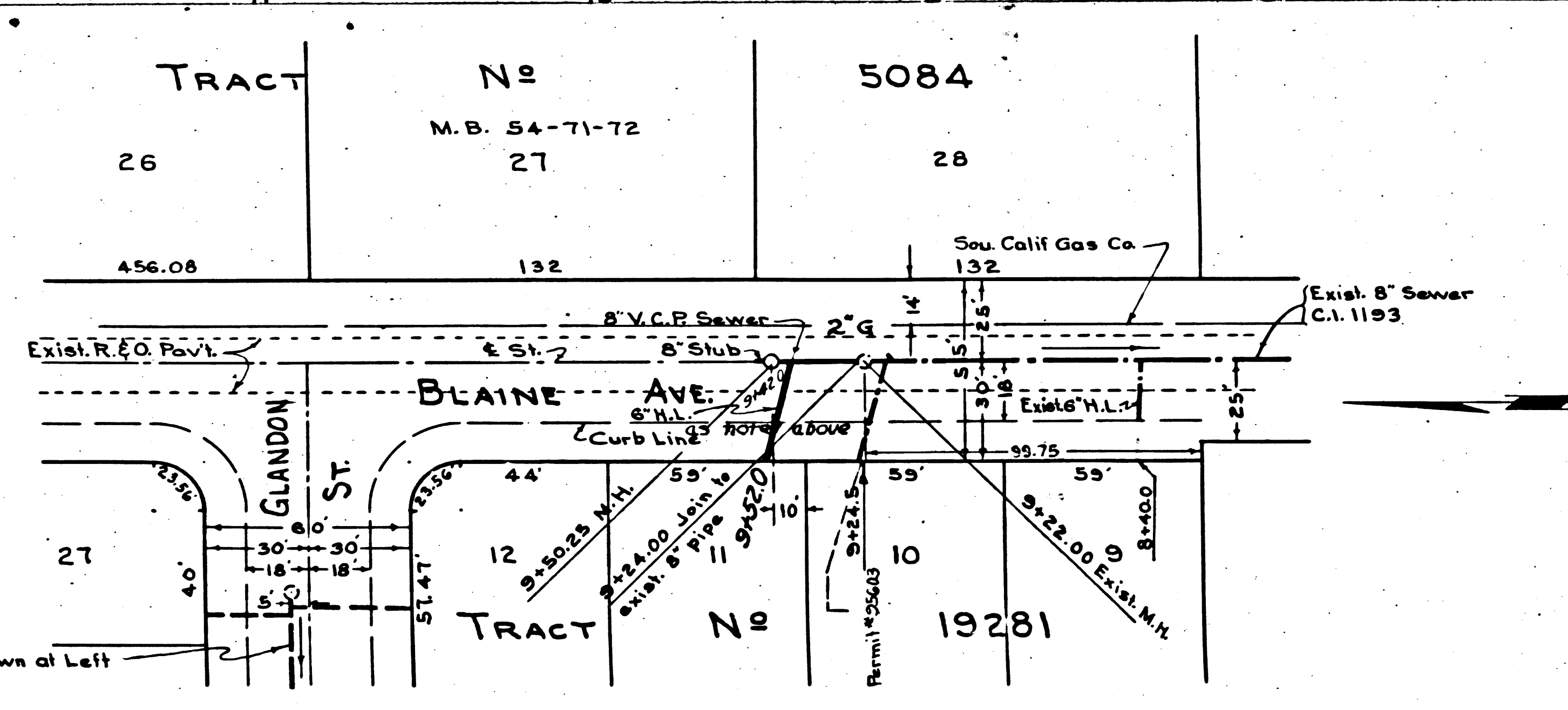
(A)

PC. 2737  
J.N. F660  
PAGE 2



NOTE: LOTS 19 to 23 INCL.  
OF TRACT 19281 SERVED  
BY P.C. 2739 J.N. F662

(10)



Trim Line



