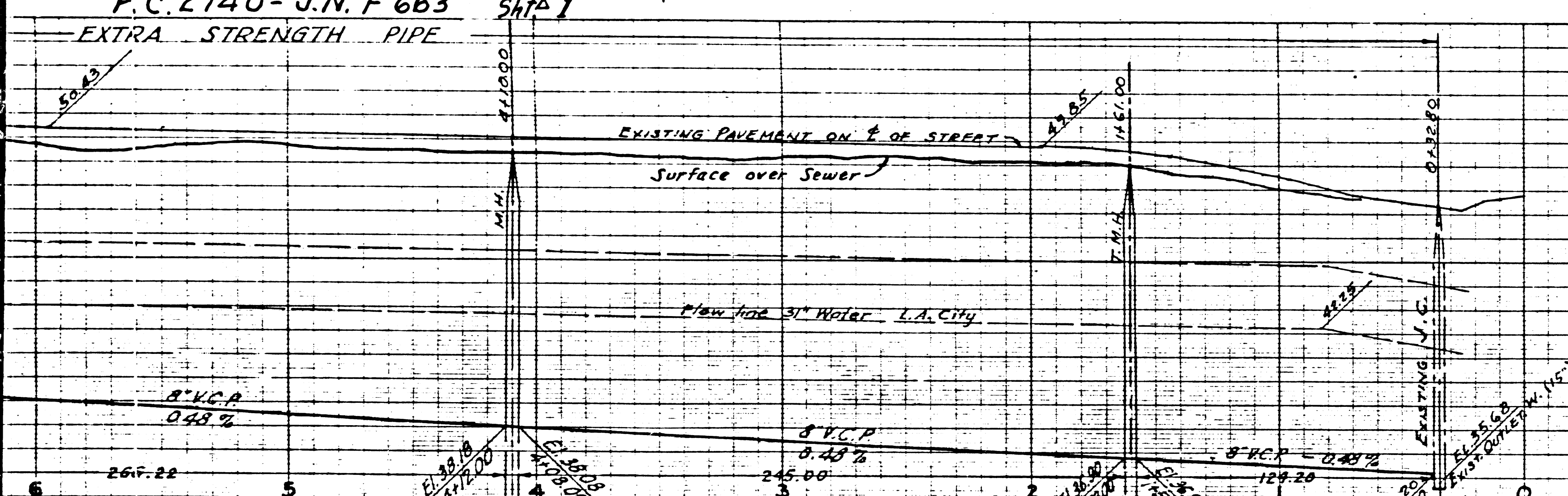


F.C. 2740 - J.N. F 663 Sht. 1
EXTRA STRENGTH PIPE

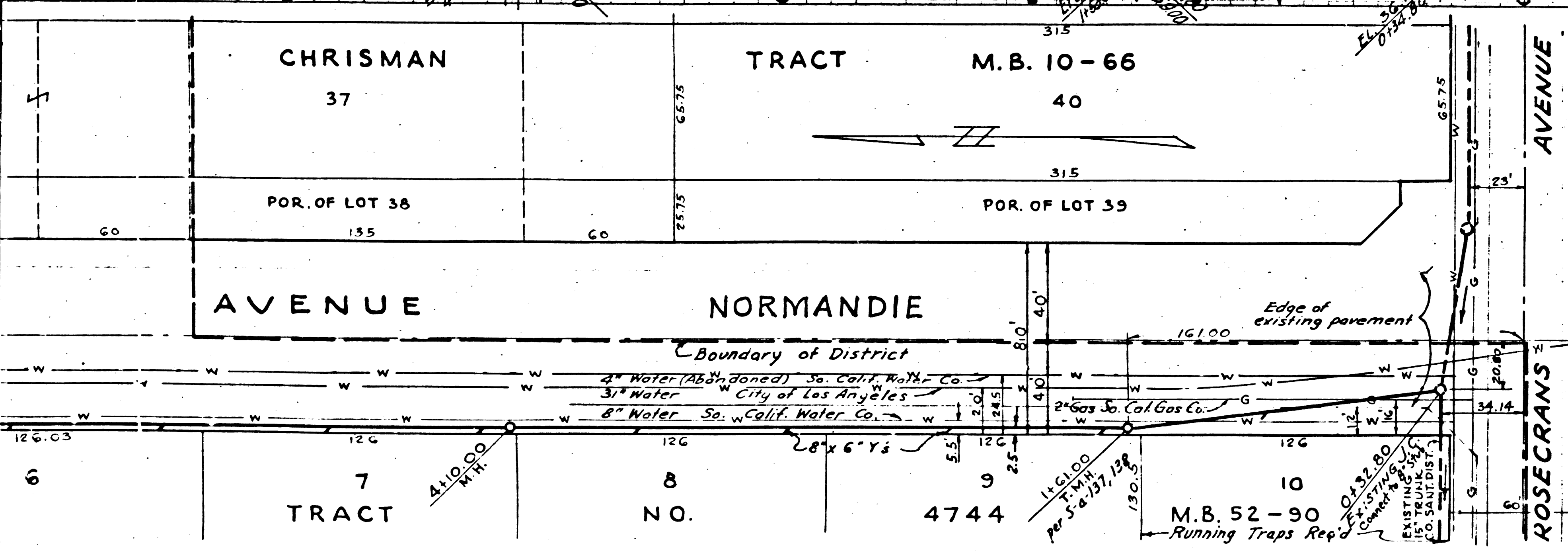
LENNOX Bldg. Dist. 7
BENCH MARK SY 544
17808
L.S.T. near S. edge conc. pvt. Rosecrans Ave.
2 1/2' S. of E. Rosecrans Ave. & 1 8' W. of E.
Normandie Ave. Elev. 47.35

PC. 2740 - J.N. F 663 Sht. 1



1. Use standard manhole frames and covers S-a-117
2. Use standard strength pipe except as noted.
3. Use cement mortar for all vitrified clay pipe joints.
4. Resurface all trench within paved area to meet L.A. County Road Dept. requirements in accordance with permit.
5. All structures shall be brick sewer structures S-a-104, Accept as Noted.
6. Easement 4 ft. of sewer at points of interference with poles per S-a-118.
7. House laterals to be constructed with 1/4" rise per foot to property line.

Notes:
All locations shown for utility mains and laterals have been taken from records and their correctness is in no way guaranteed. It shall be the contractor's responsibility alone to definitely locate all underground lines of every nature whether shown hereon or not, and protect them from damage. The contractor shall bear the total expense of repair to any line damaged by any operation in connection with the prosecution of this work.



PRIVATE CONTRACT No. 2740
SHEET 1 OF 3 SHEETS RECEIVED

AUG 14 1953
L.A. COUNTY ENGINEER
SANITATION DIVISION

APPROVED, WILLIAM J. FOX, COUNTY ENGINEER
BY *W. J. Fox*
CHIEF DEPUTY

APPROVED, A.M. RAWN
CHIEF ENGR. CO. SAN. DIST. NO. 5
BY *A.M. Rawn*
OFFICE, ENGINEER

Before construction with any existing structure and before 25% of contract of this work, County Sanitation District should be notified in order that required inspection may be made.

CITY OF GARDENA
ENGINEERING DEPARTMENT
PLAN & PROFILE OF SANITARY SEWERS
TO BE CONSTRUCTED IN
NORMANDIE AVENUE
ROSECRANS AVENUE TO 139TH STREET

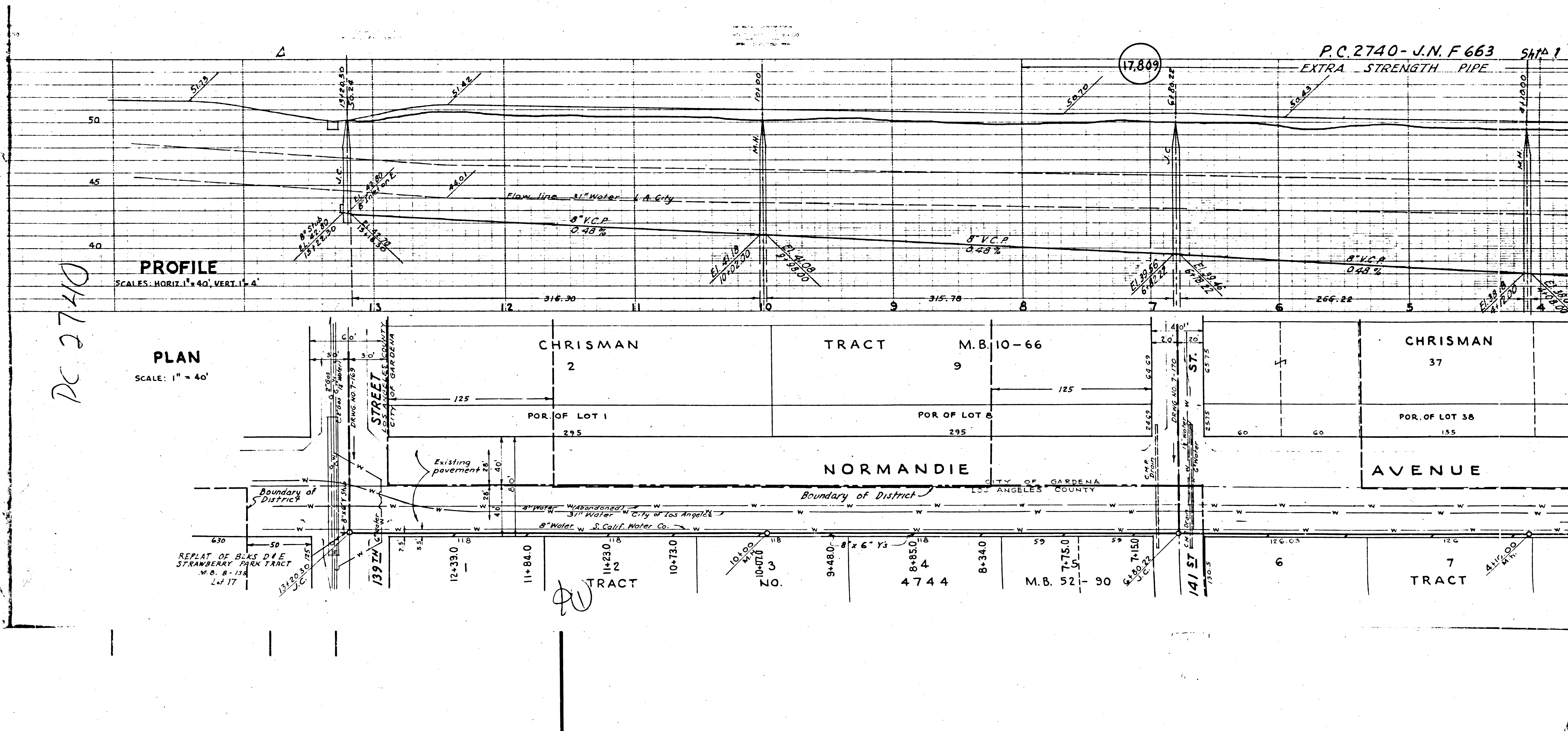
DATE: MAY 1953
SCALE: AS SHOWN
DRAWN: C.S.D.
REF: L.A. CO. RD DEPT. DRAWING NO. 672

APPROVED: *W. J. Fox*
RE. 1216 CITY ENGINEER

JOB No. G-242
DRWG. NO. 7-168

B.C.D.

(2)



P.C. 2740 - J.N.F. 663 SHT 1
EXTRA STRENGTH PIPE

PROFILE
SCALES: HORIZ. 1" = 40', VERT. 1" = 4'

PLAN
SCALE: 1" = 40'

PC 2740

20

REPLAT OF B.L.S. D.I.E.
STRAWBERRY PARK TRACT
M.B. 8-1-19
L.P. 17

131230
J.C.

139 7/8
J.C.

12+33.0

11+84.0

11+230.118

10+73.0

10+00.0
10+07.0
Z.O.

9+48.0

8+85.0

8+34.0

59

7-75.0

7-15.0

6+50.0
7-15.0
J.C.

141 ST
770.3

126.05

6

126

7

117.00
M.H.

131230
J.C.

139 7/8
J.C.

12+33.0

11+84.0

11+230.118

10+73.0

10+00.0
10+07.0
Z.O.

9+48.0

8+85.0

8+34.0

59

7-75.0

7-15.0

6+50.0
7-15.0
J.C.

141 ST
770.3

126.05

6

126

7

117.00
M.H.

20

REPLAT OF B.L.S. D.I.E.
STRAWBERRY PARK TRACT
M.B. 8-1-19
L.P. 17

131230
J.C.

139 7/8
J.C.

12+33.0

11+84.0

11+230.118

10+73.0

10+00.0
10+07.0
Z.O.

9+48.0

8+85.0

8+34.0

59

7-75.0

7-15.0

6+50.0
7-15.0
J.C.

141 ST
770.3

126.05

6

126

7

117.00
M.H.

131230
J.C.

139 7/8
J.C.

12+33.0

11+84.0

11+230.118

10+73.0

10+00.0
10+07.0
Z.O.

9+48.0

8+85.0

8+34.0

59

7-75.0

7-15.0

6+50.0
7-15.0
J.C.

141 ST
770.3

126.05

6

126

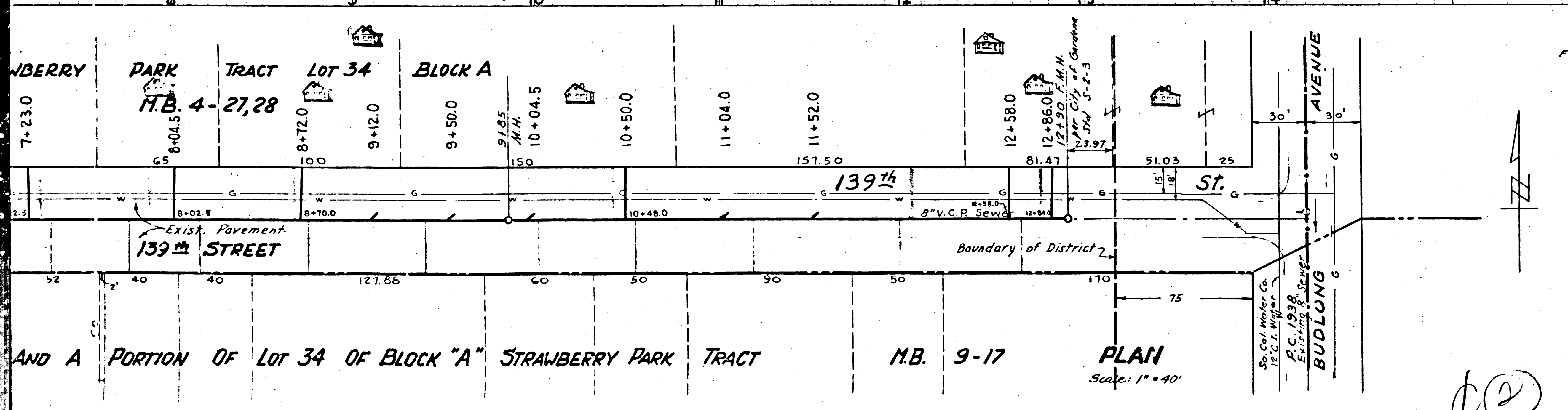
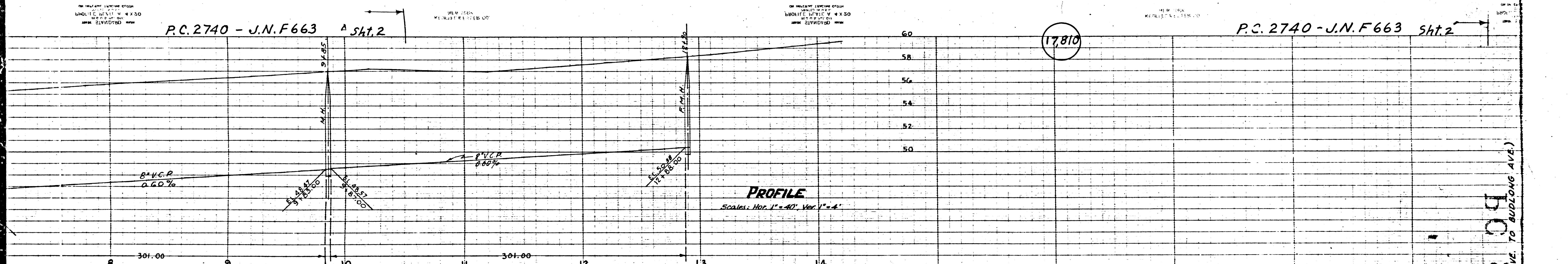
7

117.00
M.H.

P.C. 2740 - J.N.F 663 A Sht. 2

P.C. 2740 - J.N.F 663 Sht. 2

17810



SEE PLAN NO. 7-168 FOR CONSTRUCTION NOTES

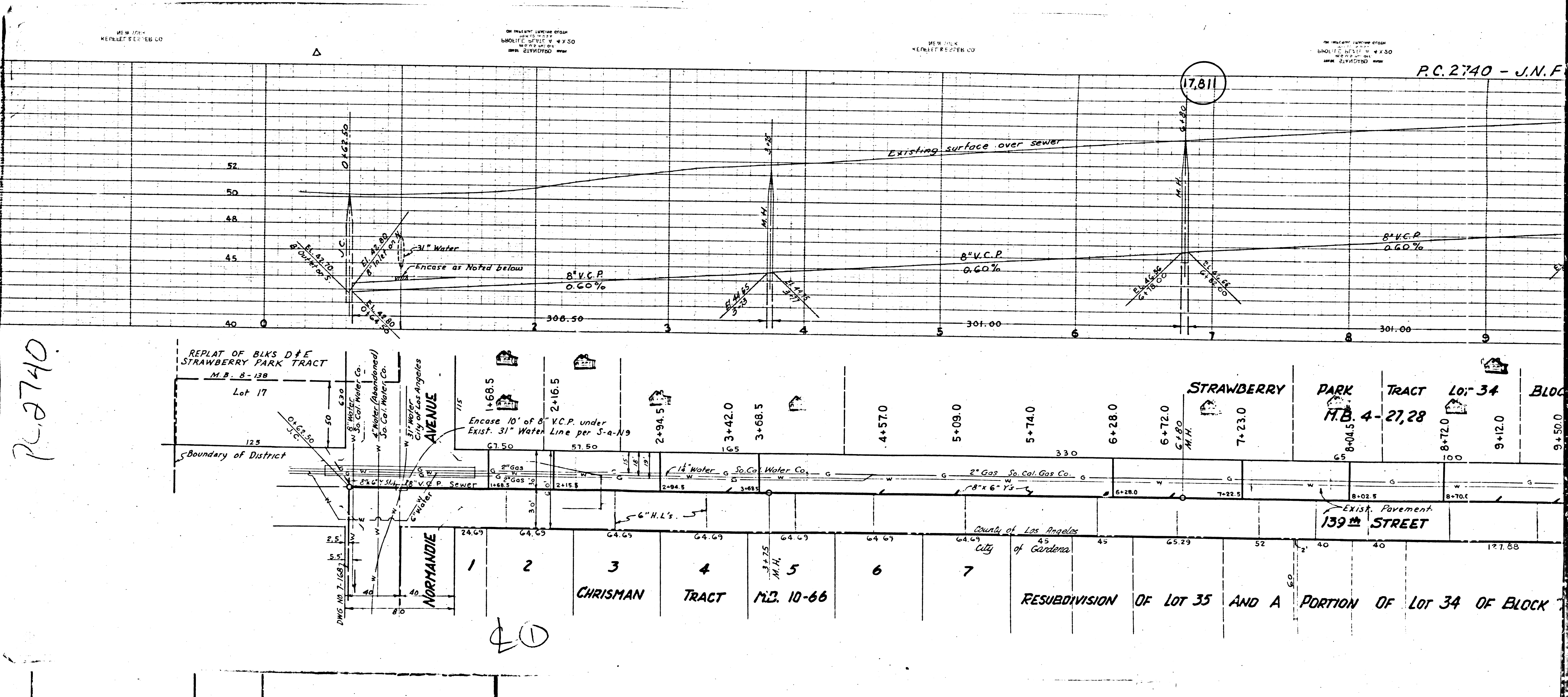
PRIVATE CONTRACT No. 2740
SHEET 2 OF 3 SHEETS RECEIVED
AUG 14 1953
L.A. COUNTY ENGINEER
SANITATION DIVISION
APPROVED, WILLIAM J. FOX, COUNTY ENGINEER
BY *W. J. Fox*
CHIEF DEPUTY
APPROVED, A. M. RAWN
CHIEF ENGR. CO. SANT. DISTRICT NO. 5
BY *A. M. Rawn*
OFFICE ENGINEER

CITY OF GARDENA
ENGINEERING DEPARTMENT
PLAN & PROFILE OF SANITARY SEWERS
TO BE CONSTRUCTED IN
139TH STREET
NORMANDIE AVENUE TO BUDLONG AVENUE
DATE: MAY 1953
SCALE: AS SHOWN
DRAWN: C. G. LUDWIG
REF: L.A. CO. STD. DEPT. DRWG. NO. 672
APPROVED: *W. J. Fox*
REIZIG CITY ENGINEER
JOB No. G-242
DRWG. NO. 7-169

AND A PORTION OF LOT 34 OF BLOCK "A" STRAWBERRY PARK TRACT M.B. 9-17 PLAN Scale: 1" = 40'

7-169 139TH STREET (NORMANDIE AVE. TO BUDLONG AVE.)

②

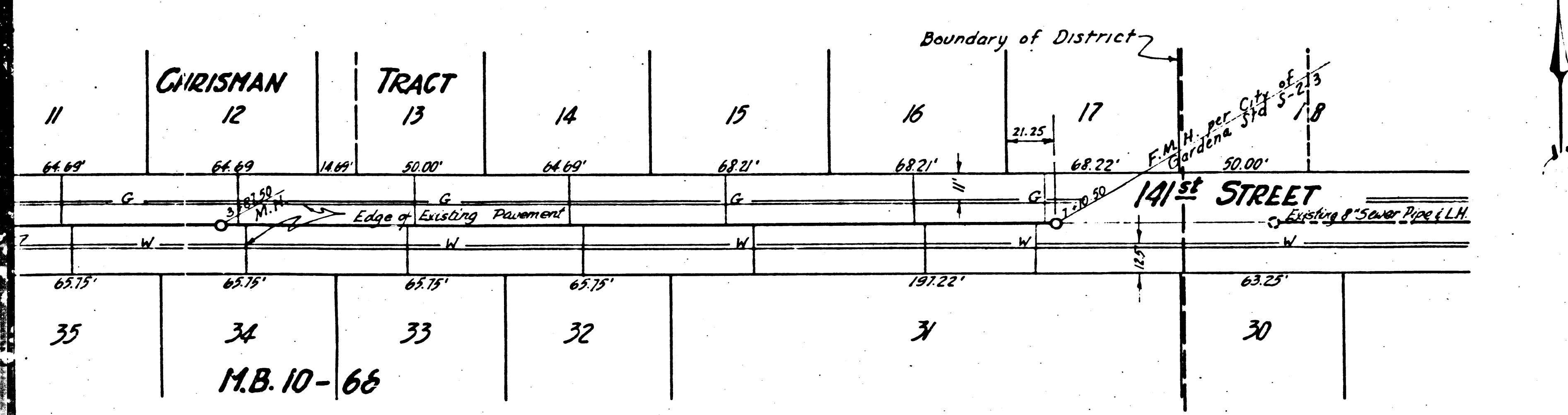
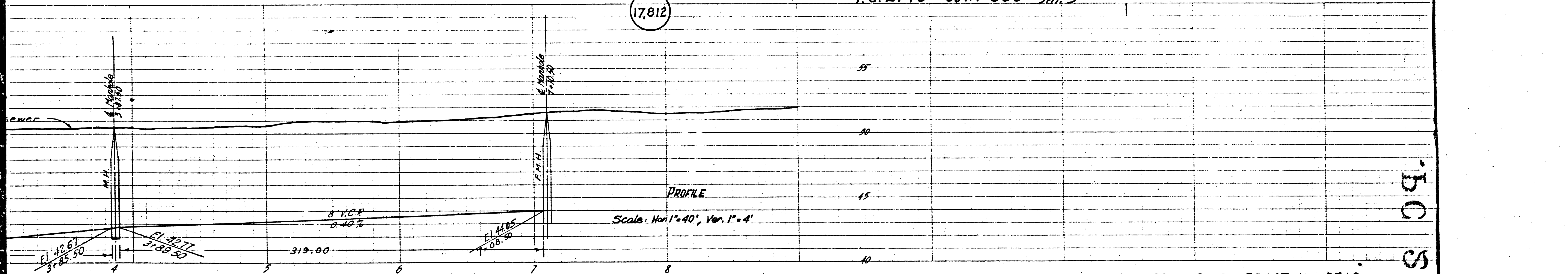


P.L. 2740

40

PC. 2740 - J.N.F 663 sht. 3

17,812



SEE PLAN NO. 7-168
FOR CONSTRUCTION NOTES

PRIVATE CONTRACT No. 2740
SHEET 3 OF 3 SHEETS

RECEIVED
AUG 14 1953
L. A. COUNTY ENGINEER
SANITATION DIVISION

Approved, William J. Fox, County Engineer
By *W. J. Fox*
Chief Deputy

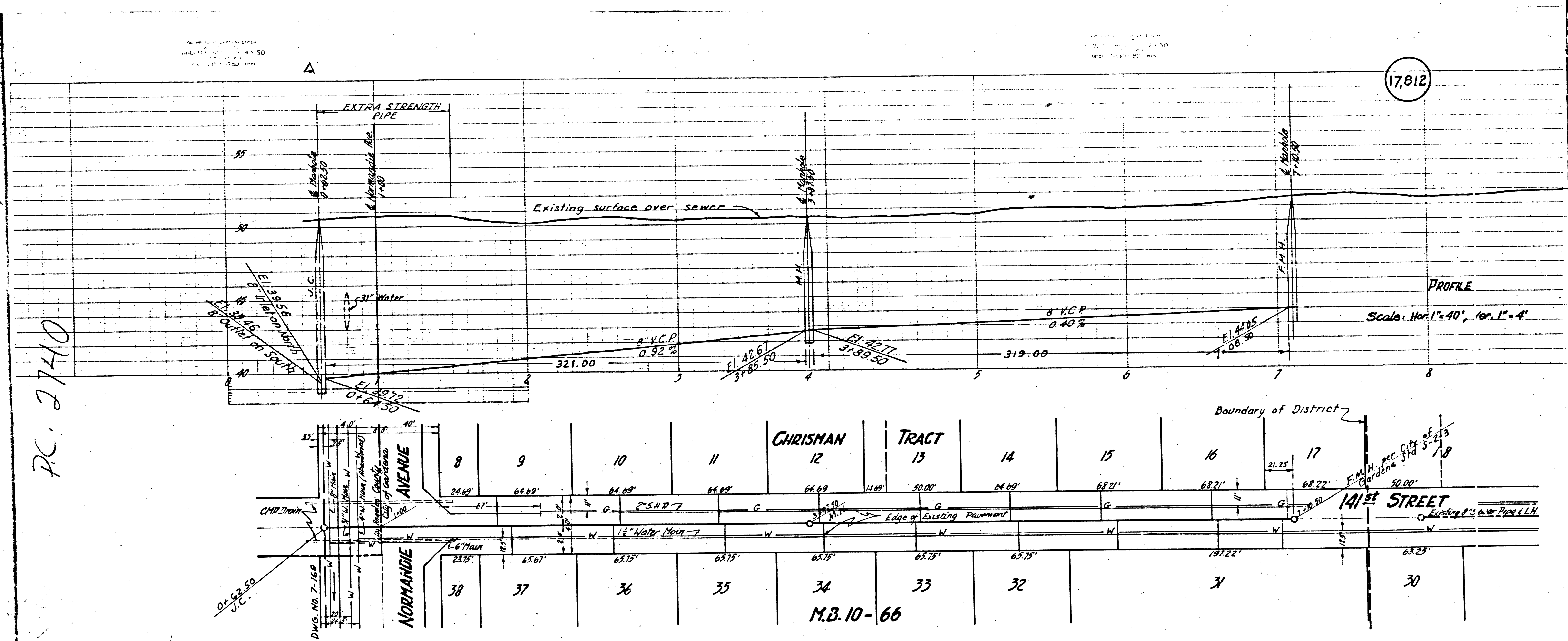
Approved, A.M. Rawn, Chief Engr. Co. San. District No. 5
By *A.M. Rawn*
Office Engineer

CITY OF GARDENA
Engineering Department
Plan & Profile of Sanitary Sewers to be Constructed in
141st STREET
From Normandie Avenue to 646 feet East
Date: June 1953
Scale: as shown
Drawn by: J.S.
Checked by: R.E. 1216 C.E. Engineer
Job No. G-242
Drawn No. 7-170

PC 2740

(2)

17812



PC. 27410

PLAN
Scale: 1" = 40'