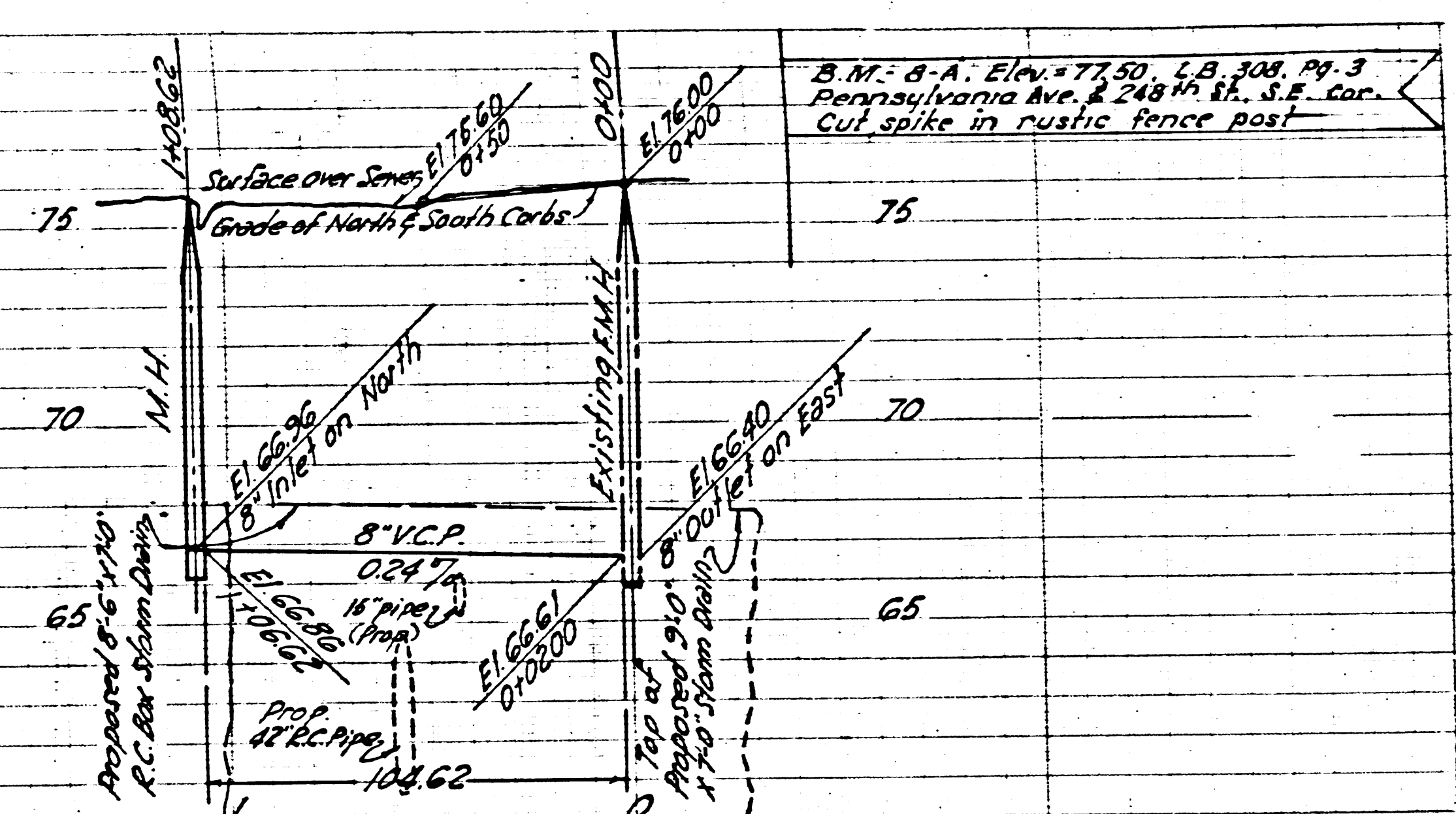


P.C. 2745
J.N. F669
PAGE 2

(17,193)

70
Elev. 70.00
8' on top of asphalt

65



LOMITA BUILDING DISTRICT NO. 7-L

- NOTE: NO REPRESENTATIVE OF THE COUNTY ENGINEER WILL SURVEY OR LAY OUT ANY PORTION OF THE WORK. THE OWNER OR HIS AUTHORIZED REPRESENTATIVE SHALL FURNISH THE COUNTY ENGINEER WITH GRADE SHEETS AND STATIONS FOR ALL HOUSE LATERALS AND Y BRANCHES AND SHALL PROVIDE STAKES FOR THEM AT THEIR PROPER LOCATIONS WITH STATIONING PLAINLY MARKED. ANY CHANGE IN LOCATION SHALL BE REQUESTED IN WRITING BY THE OWNER OR HIS REPRESENTATIVE. NO REVISIONS SHALL BE MADE IN THESE PLANS WITHOUT APPROVAL OF THE COUNTY ENGINEER.
1. USE STANDARD MANHOLE FRAMES AND COVERS. S-8-117
 2. USE STANDARD STRENGTH PIPE
 3. USE CEMENT MORTAR FOR ALL VITRIFIED CLAY PIPE JOINTS
 4. RESURFACE ALL TRENCH WITHIN PAVED AREA TO MEET L.A. COUNTY ROAD DEPT REQUIREMENTS
 5. ENCASE FOUR FEET OF SEWER AT POINTS OF INTERFERENCE WITH POLES. S-8-119
 6. HOUSE LATERALS TO BE CONSTRUCTED WITH 1/4" RISE PER FOOT
 7. ALL STRUCTURES SHALL BE BRICK SEWER STRUCTURES. S-8-104
 8. PROVIDE STAKES ON THE PROPERTY LINE OR PROPERTY LINE PRODUCED AT RIGHT ANGLES TO THE SEWER LINE AT THE CENTER LINE OF EACH MANHOLE
 9. MANHOLE TOPS IN UNIMPROVED RIGHTS-OF-WAY TO BE 6" ABOVE FINISHED GRADE.
 10. FOR ALLOWABLE LEAKAGE TEST, USE FORMULA NO. 1, SPEC'S. SEC. 51.

PROFILE, ALIGNMENT AND GRADE OF SANITARY SEWERS TO BE CONSTRUCTED IN 248TH STREET

BETWEEN PENNSYLVANIA AVE. AND A POINT
30 FT. EASTERLY OF THE CENTERLINE THEREOF
PENNSYLVANIA AVENUE
BETWEEN 247th ST. AND 248th ST.
SANITARY SEWER RIGHT OF WAY
BETWEEN PENNSYLVANIA AVE. AND A PT. 675 FT. WESTERLY OF THE CENTERLINE THEREOF
PRIVATE CONTRACT NO. 2745
W.S. 27
ONE SHEET

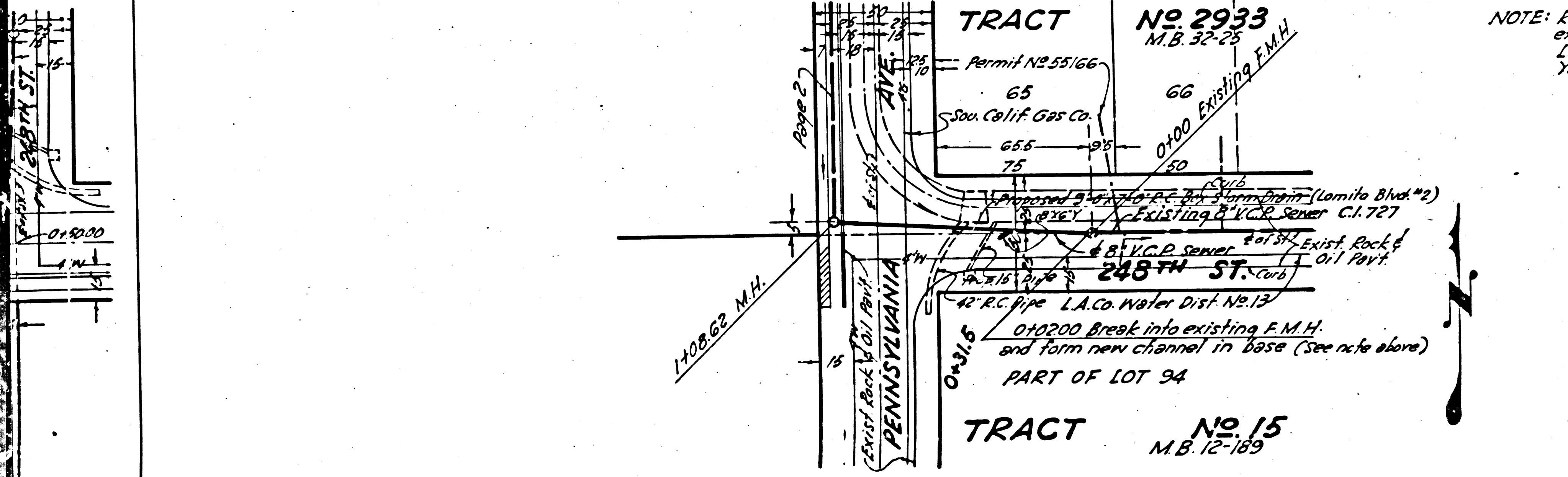
SCALE: VERT. 1"=4'
HORIZ. 1"=40'
JULY 1953
PREPARED IN THE OFFICE OF
HARRY GILBERT
BY *[Signature]*
REG. C.E. NO. 1797
FOR LEGEND SEE PLAN NO. S-8-64

NOTE: GRADES TO WHICH THIS IMPROVEMENT IS TO BE CONSTRUCTED ARE SHOWN ON PLANS AND PROFILES. GRADE POINTS FOR TOP OF CURBS, CENTERLINE OF STREETS OR CENTERLINE OF ALLEYS ARE SHOWN BY CIRCLES ON PROFILES. AT ALL POINTS BETWEEN DESIGNATED POINTS THE GRADE SHALL BE ESTABLISHED SO AS TO CONFORM TO A STRAIGHT LINE DRAWN BETWEEN SAID DESIGNATED POINTS. ELEVATIONS ARE IN FEET ABOVE U.S.G.S. DATUM OR MEAN SEA LEVEL. THIS DRAWING AND THE DATA HEREON ARE HEREBY MADE A PART OF THE SPECIFICATIONS. WORK SHALL BE CONSTRUCTED ACCORDING TO SPECIFICATIONS ON FILE IN THE OFFICE OF THE COUNTY ENGINEER AND SHALL BE OBSERVED ONLY IN THE PRESENCE OF THE COUNTY ENGINEER. BEFORE WORK CAN BE STARTED THE CONTRACTOR MUST OBTAIN A PERMIT TO EXCAVATE IN COUNTY STREETS FROM THE L.A. COUNTY ROAD DEPT. 100 N. 2nd ST. AND MAKE A DEPOSIT WITH THE COUNTY ENGINEER, 124 L.A. COUNTY ENGINEERING BUILDING, SUFFICIENT TO COVER THE COST OF CONSTRUCTION, INSPECTION, AND RECORDED PLANS. APPROVAL OF THIS PLAN BY THE COUNTY OF LOS ANGELES DOES NOT CONSTITUTE A REPRESENTATION AS TO THE ACCURACY OR THE LOCATION OR THE EXISTENCE OR NON-EXISTENCE OF ANY UNDERGROUND UTILITY, PIPE, OR STRUCTURE WITHIN THE LIMIT OF THIS PROJECT.

COUNTY OF LOS ANGELES, CALIFORNIA
APPROVED, **WILLIAM J. FOX**
COUNTY ENGINEER
BY: *[Signature]*
CHIEF DEPUTY

APPROVED, **A.M. RAWIN**
CHIEF ENGR. CO. SAN. DIST. NO. 5
BY: *[Signature]*
ASST. OFFICE ENGINEER

CHECKED BY: *[Signature]* 9-2-53
OFFICE OF COUNTY ENGINEER, REG. C.E. NO. 6412



Checked 10-26-53 *[Signature]*

Trim Line

P.C. 2745
J.N. F669
PAGE 1

(17,192)

(2)

PENNSYLVANIA AVE.
30 FT. WEST OF PENNSYLVANIA AVE.
P.C. 2745
J.N. F669