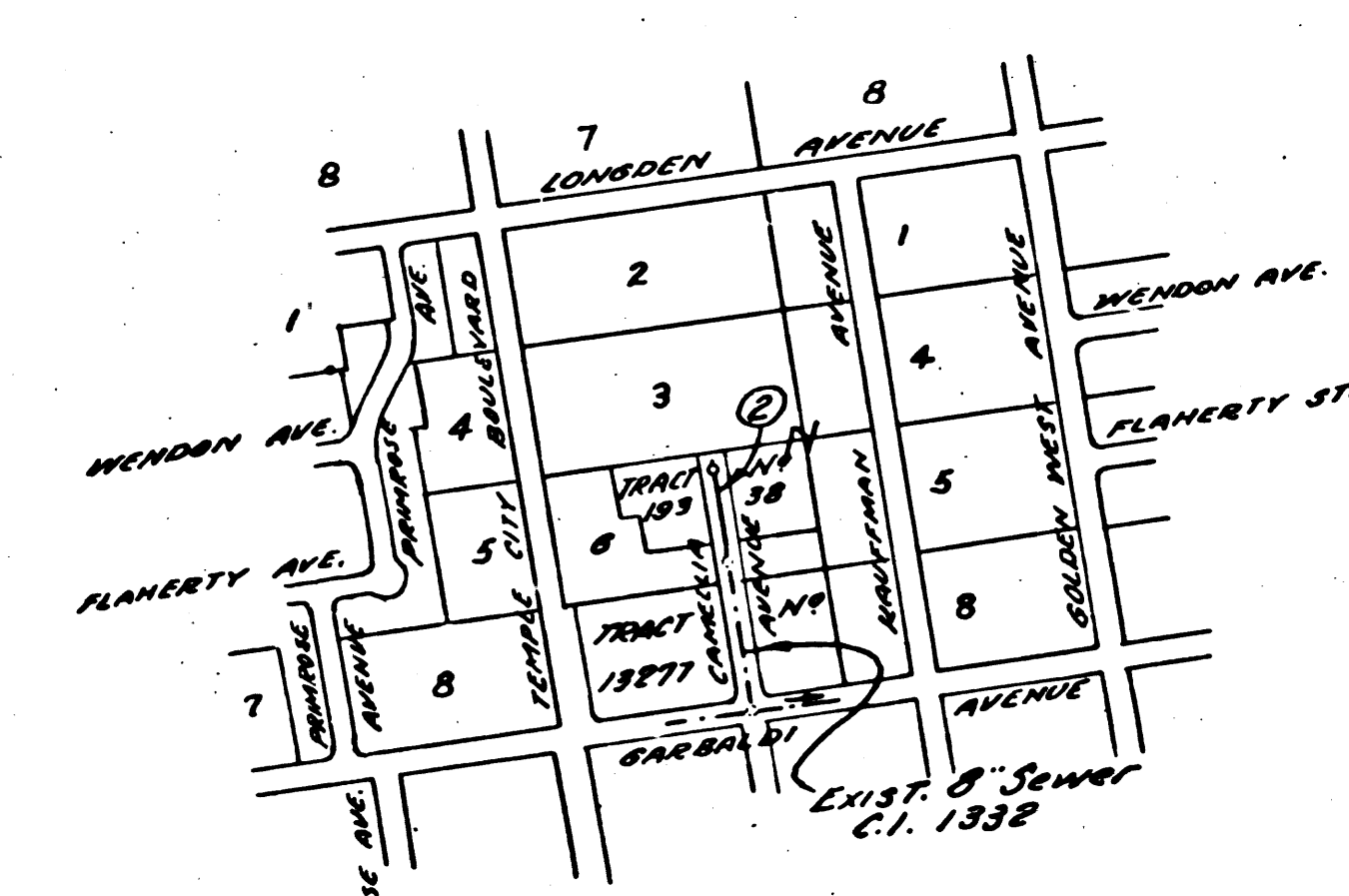


B.M. S.G. 558 Elev. 438.105 Temple City Boulevard and Langden Avenue, S.E. cor. Spike and Lead 9' south of Curb Return.

- NOTE:**
 Provide stakes on the property lines or property lines produced at right angles to the sewer line at the center line of each manhole.
 No representative of the County Engineer will survey or layout any portion of the work. The owner or his authorized representative shall furnish the County Engineer with grade sheets and stations for all house laterals and Y branches and shall provide stakes for them at their proper locations with stationing plainly marked. Any change in location shall be requested in writing by the owner or his representative.
 No revisions shall be made in these plans without the approval of the County Engineer.
1. Use standard manhole frames and covers, S-a-117.
 2. Use standard strength pipe except as noted.
 3. Use cement mortar for all vitrified clay pipe joints.
 4. Resurface all trench within paved area to meet L.A. County Road Dept. or Calif. State Highway Dept. requirements in accordance with permit.
 5. Encase four feet of sewer at points of interference with poles, S-a-119.
 6. House laterals to be constructed with inverts at property line.....feet below curb grade except as noted.
 7. All structures shall be brick sewer structures, S-a-104.
 8. Manhole tops in unimproved Rights-Of-Way to be 6" above finish grade.
 9. For allowable leakage test, use Formula No..... Specs., Sec. 51.

TEMPLE CITY BLDG. DIST. #5



INDEX MAP
 P.C. 2748
 J.N. F 678
 Scale: 1"=200'

SHEET	PAGE
1	1-2

Checked 10-27-53 *McLennan*

TRIM LINE

PROFILE, ALIGNMENT AND GRADE OF
SANITARY SEWERS
 TO BE CONSTRUCTED IN
TRACT NO 19338

P.C. 2748
 J.N. F 678
 PAGE 1

17,194

PRIVATE CONTRACT NO. 2748
 W. S. 14
 SHEET 1 OF 1 SHEET
 Scale: VERT. 1"=4' HORIZ. 1"=40' JUNE, 1953
 PREPARED IN THE OFFICES OF
 M.W. FINLEY, L.S. 2342
 Leon W. Moore Reg. C. E. No. 7157
 FOR LEGEND SEE PLAN NO. S-a-64

NOTE:
 Grades to which this improvement is to be constructed are shown on plans and profiles. Grade points for top of curbs, center line of streets, or center line of alleys are shown by circles on profiles. At all points between designated points the grade shall be established so as to conform to a straight line drawn between said designated points.
 Elevations are in feet above U.S.G.S. datum or mean sea level.
 This drawing and the data hereon are hereby made a part of the specifications.
 Work shall be constructed according to specifications on file in the office of the County Engineer and shall be prosecuted only in the presence of the County Engineer.
 Before work can be started, the contractor must obtain a permit to excavate in County streets from the L.A. County Road Dept., 108 W. 2nd St. and make a deposit with the County Engineer, 733 L.A. County Engineering Building, sufficient to cover the cost of construction inspection and record plans.
 Approval of this plan by the County of Los Angeles does not constitute a representation as to the accuracy of the location of or the existence or non-existence of any underground utility, pipe, or structure within the limits of this project. This note applies to all sheets.
 If work is to be done in a State Highway, a permit must be obtained from the State of California, Division of Highways, 120 South Spring Street.

COUNTY OF LOS ANGELES, CALIFORNIA
 Approved, William J. Fox, County Engineer
 Approved, A. M. Rawn
 CHIEF ENGR. CO. SAN. DIST. NO. 15
 By *W. J. Fox*
 ASST. Chief Deputy
 Checked By *Richard E. K... 7-30-53*
 Office of County Engineer, Reg. C. E. No. 7260

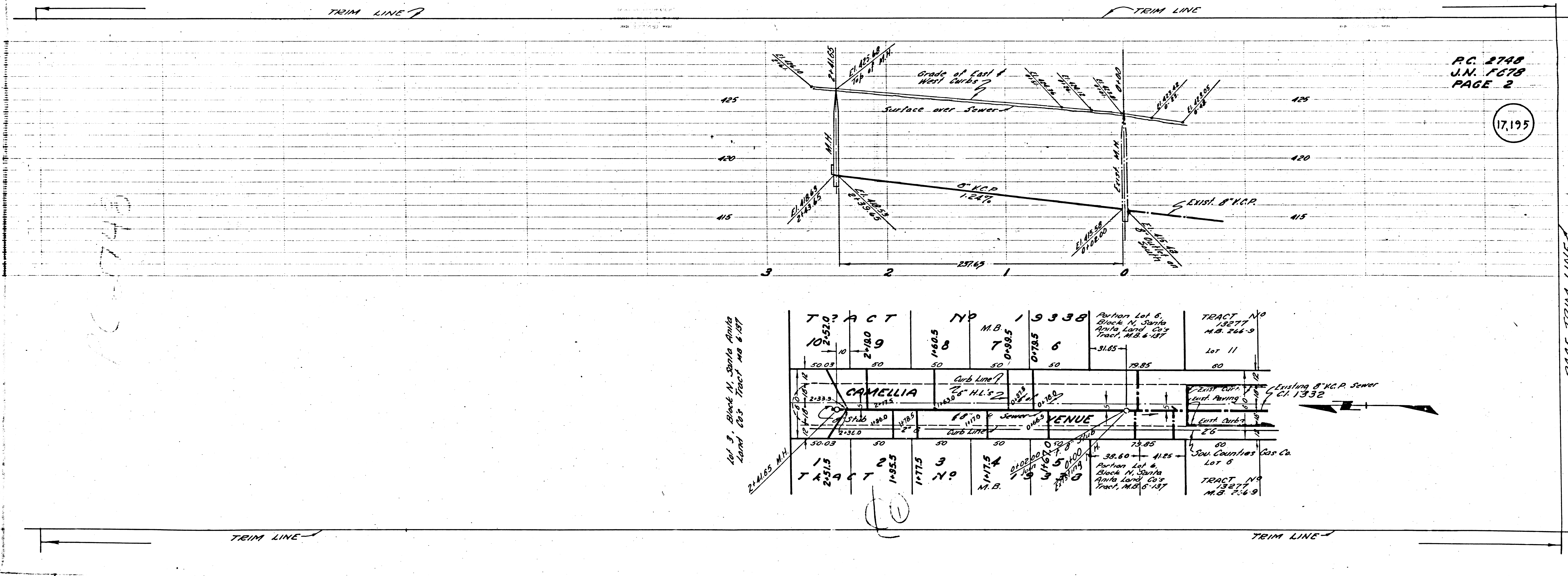
R.B.

TRIM LINE

PC 1743

P.C. 2748
J.N. F678
PAGE 2

17.195



TRACT NO 102520		TRACT NO 2180		TRACT NO 19338		TRACT NO 13277	
M.B. 2180		M.B. 19338		M.B. 13277		M.B. 2180	
Part of Block N, Santa Anita Land Co's Tract No 6-101		Part of Block N, Santa Anita Land Co's Tract No 6-101		Part of Block N, Santa Anita Land Co's Tract No 6-101		Part of Block N, Santa Anita Land Co's Tract No 6-101	
30.03		30.03		30.03		30.03	
CAMELLIA		VENUE		VENUE		VENUE	
TRACT NO 1		TRACT NO 2		TRACT NO 3		TRACT NO 4	
M.B. 19338		M.B. 19338		M.B. 19338		M.B. 19338	
Part of Block N, Santa Anita Land Co's Tract No 6-101		Part of Block N, Santa Anita Land Co's Tract No 6-101		Part of Block N, Santa Anita Land Co's Tract No 6-101		Part of Block N, Santa Anita Land Co's Tract No 6-101	
30.03		30.03		30.03		30.03	
TRACT NO 1		TRACT NO 2		TRACT NO 3		TRACT NO 4	
M.B. 19338		M.B. 19338		M.B. 19338		M.B. 19338	
Part of Block N, Santa Anita Land Co's Tract No 6-101		Part of Block N, Santa Anita Land Co's Tract No 6-101		Part of Block N, Santa Anita Land Co's Tract No 6-101		Part of Block N, Santa Anita Land Co's Tract No 6-101	
30.03		30.03		30.03		30.03	
TRACT NO 1		TRACT NO 2		TRACT NO 3		TRACT NO 4	
M.B. 19338		M.B. 19338		M.B. 19338		M.B. 19338	
Part of Block N, Santa Anita Land Co's Tract No 6-101		Part of Block N, Santa Anita Land Co's Tract No 6-101		Part of Block N, Santa Anita Land Co's Tract No 6-101		Part of Block N, Santa Anita Land Co's Tract No 6-101	
30.03		30.03		30.03		30.03	

PAGE TRIM LINE