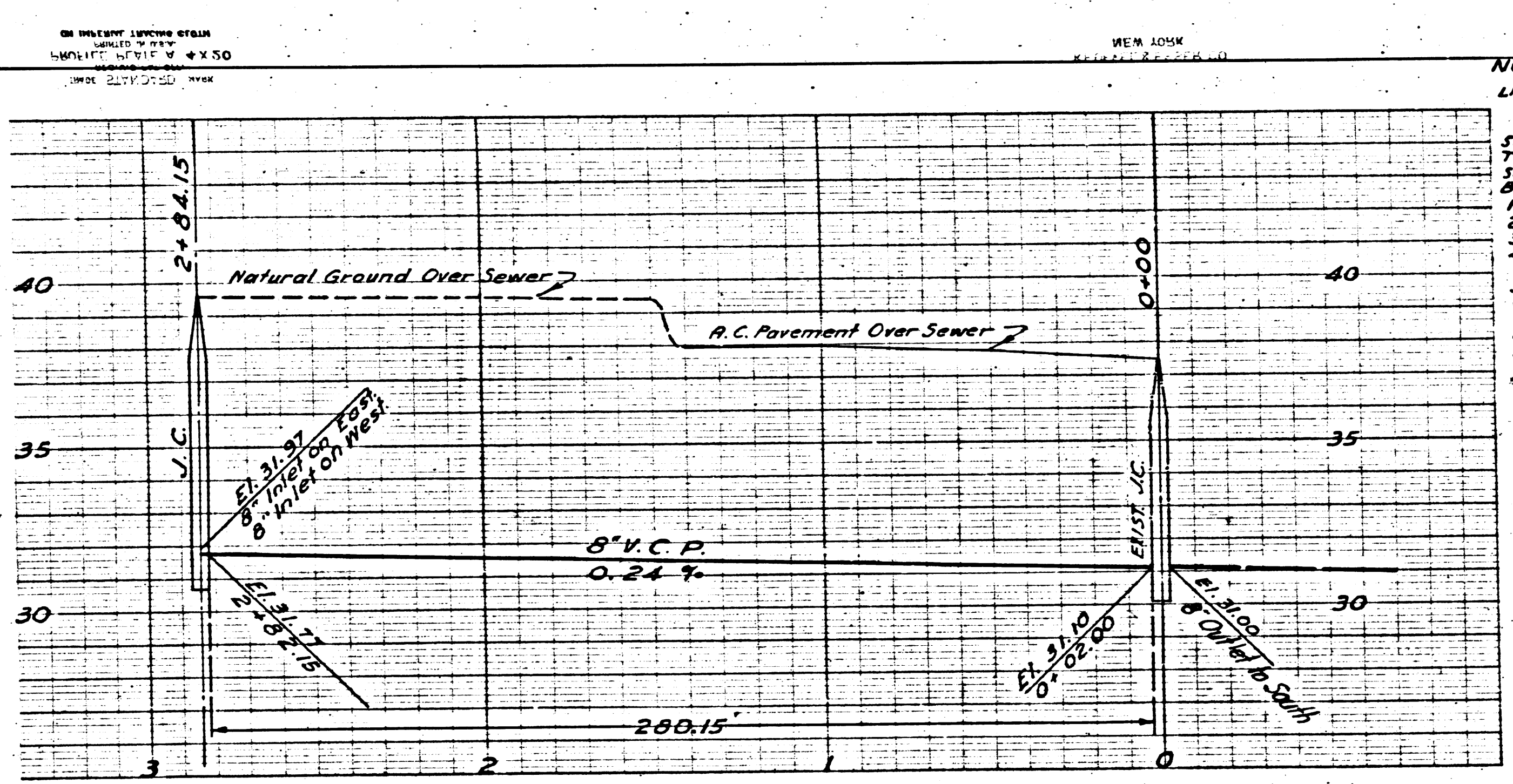
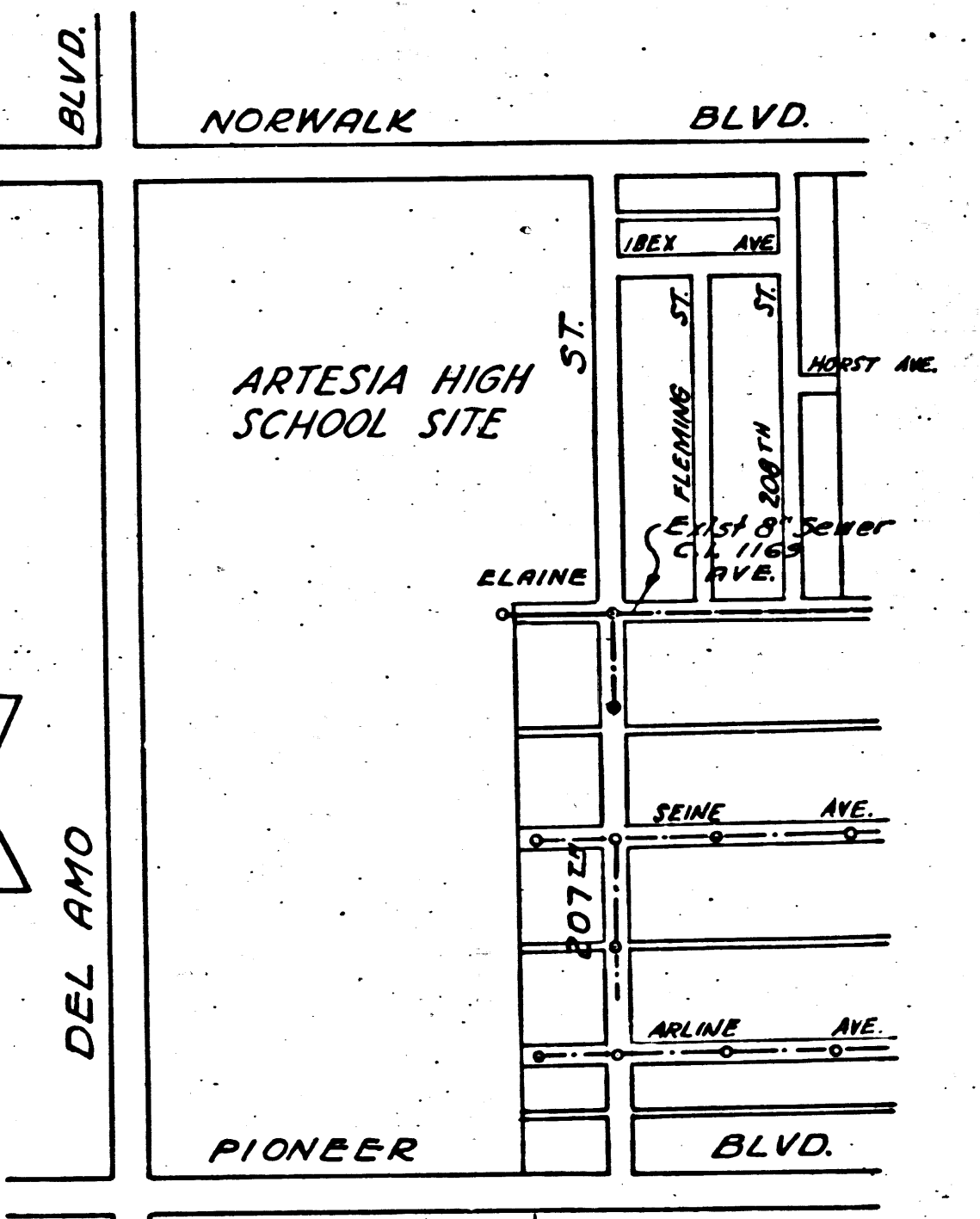


PC 2761

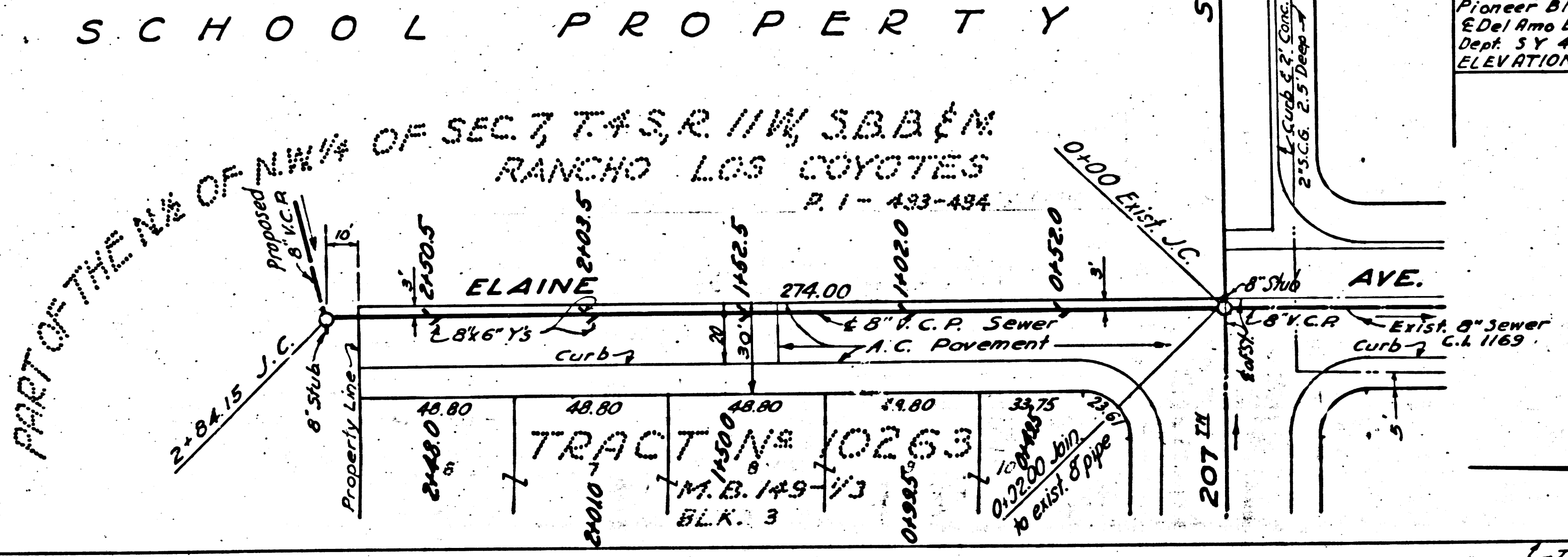


- NOTE:** PROVIDE STAKES ON THE PROPERTY LINE OR PROPERTY LINES PRODUCED BY RIGHT ANGLES TO THE SEWER LINE AT THE CENTER LINE OF EACH MANHOLE.
- NO REPRESENTATIVE OF THE COUNTY ENGINEER WILL SURVEY OR LAYOUT ANY PORTION OF THE WORK. THE OWNER OR HIS AUTHORIZED REPRESENTATIVE SHALL FURNISH THE COUNTY ENGINEER WITH GRADE SHEETS AND STATIONS FOR ALL HOUSE CONNECTIONS AND 1" BRANCHES AND SHALL PROVIDE STAKES FOR THEM AT THEIR PROPER LOCATIONS WITH STATIONING PLAINLY MARKED. ANY CHANGE IN LOCATION SHALL BE REQUESTED IN WRITING BY THE OWNER OR HIS REPRESENTATIVE. NO REVISIONS SHALL BE MADE IN THESE PLANS WITHOUT APPROVAL OF THE COUNTY ENGINEER.
1. USE STANDARD MANHOLE FRAMES AND COVERS, S-8-117.
 2. USE STANDARD STRENGTH PIPE.
 3. USE JOINT COMPOUND #1 FOR ALL VITRIFIED CLAY PIPE JOINTS, PER SPEC. SEC. 51.
 4. RESURFACE ALL TRENCH WITHIN PAVED AREAS TO MEET L.A. CO. ROAD DEPT. REQUIREMENTS IN ACCORDANCE WITH PERMIT.
 5. ENCASE MAINLINE OR SEWER BY ROOMS OR INTERFERENCE WITH POLES, S-8-118.
 6. ALL STRUCTURES SHALL BE BRICE SEWER STRUCTURES, S-8-104.
 7. FOR ALLOWABLE CLEARANCE TEST USE FORMULA NO. 1, SPEC. SEC. 51.
 8. MANHOLE TOPS IN UNIMPROVED RIGHTS-OF-WAY TO BE FLUSH WITH FINISHED GRADE.

BELLFLOWER BLDG. DIST. NO. 4



BENCH MARK 1 N 16, Conc. Mon. 18" Deep, 30" West of E of Pioneer Blvd. 30' South of E Del Amo Blvd., L.A. Co. Road Dept. 5 Y 492, Bk. 39, Pg. 195 ELEVATION 536.203



**PROFILE ALIGNMENT AND GRADE OF
SANITARY SEWER
TO BE CONSTRUCTED IN
ELAINE AVENUE
FROM
207 1/2 STREET
TO
284.15 FT. NORTHERLY**

PRIVATE CONTRACT NO. 2761
W. S. 31
CONSISTING OF ONE SHEET
SCALE: VERT. 1"=4'
HORIZ. 1"=40'
DATE: SEPT. 1953
FOR LEGEND SEE PLAN S-a-64

NOTE: GRADES TO WHICH THIS IMPROVEMENT IS TO BE CONSTRUCTED ARE SHOWN ON PLANS AND PROFILES. GRADE POINTS FOR TOP OF CURB, CENTER LINE OF STREET OR CENTER LINE OF ALLEY ARE SHOWN BY CIRCLES ON PROFILES. AT ALL POINTS BETWEEN DESIGNATED POINTS THE GRADE SHALL BE ESTABLISHED AS TO CONFORM TO A STRAIGHT LINE DRAWN BETWEEN SAID DESIGNATED POINTS. ELEVATIONS ARE IN FEET ABOVE U.S. DATUM OR MEAN SEA LEVEL. THIS DRAWING AND THE DATA HEREON ARE HEREBY MADE A PART OF THE SPECIFICATIONS. WORK SHALL BE CONSTRUCTED ACCORDING TO THE SPECIFICATIONS ON FILE IN THE OFFICE OF THE COUNTY ENGINEER AND SHALL BE PROSECUTED ONLY IN THE PRESENCE OF THE COUNTY ENGINEER.

BEFORE WORK CAN BE STARTED, THE CONTRACTOR MUST OBTAIN A PERMIT TO EXCAVATE IN COUNTY STREETS FROM THE L.A. COUNTY ROAD DEPT. 1024 W. 25th ST. AND MAKE A DEPOSIT WITH THE COUNTY ENGINEER, 733 L.S. CO. BLDG. SUFFICIENT TO COVER THE COST OF CONSTRUCTION INSPECTION AND RECORD PLANS.

APPROVAL OF THIS PLAN BY THE COUNTY OF LOS ANGELES DOES NOT CONSTITUTE A REPRESENTATION AS TO THE ACCURACY OF THE LOCATION OF OR THE EXISTENCE OR NON-EXISTENCE OF ANY UNDERGROUND UTILITY, PIPE OR STRUCTURE WITHIN THE LIMITS OF THIS PROJECT.

IF WORK IS TO BE DONE IN A STATE HIGHWAY, A PERMIT MUST BE OBTAINED FROM THE STATE OF CALIF. DIVISION OF HIGHWAYS, 120 SO. SPRING ST.

COUNTY OF LOS ANGELES, CALIFORNIA.

APPROVED, WILLIAM J. FOX, COUNTY ENGINEER
BY: [Signature] CHIEF DEPUTY

APPROVED, A. M. RAWN, CHIEF ENGR. CO. SAN. DIST. NO. 12
BY: [Signature] OFFICE ENGINEER

CHECKED BY: [Signature] 10-1-53
OFFICE OF COUNTY ENGINEER, REG. C.E. NO. 7860

ARCHITECT <i>Henry C. Vandenberg</i> REGISTERED CIVIL ENGINEER NO. 6411	CONTRACTOR TO VERIFY ALL DIMENSIONS AT THE JOB	
	PLAN & PROFILE ELAINE AVENUE SEWER	DATE SEPT. 1953
	ARTESIA HIGH SCHOOL EXCELSIOR UNION HIGH SCHOOL DISTRICT	DR. BY R. D. E. H. N. CHECKED BY [Signature]
	NORWALK, CALIFORNIA. KISTNER, WRIGHT & WRIGHT ARCHITECTS AND ENGINEERS LOS ANGELES, CALIF.	SHEET NO. C-2 OF 2 SHEETS JOB NO. 52-40

(17,411)

Page 1 of 2
B-5581
NW 1522

INDEX MAP
SCALE 1" = 600'
P.C. 2761 J.N. F695

