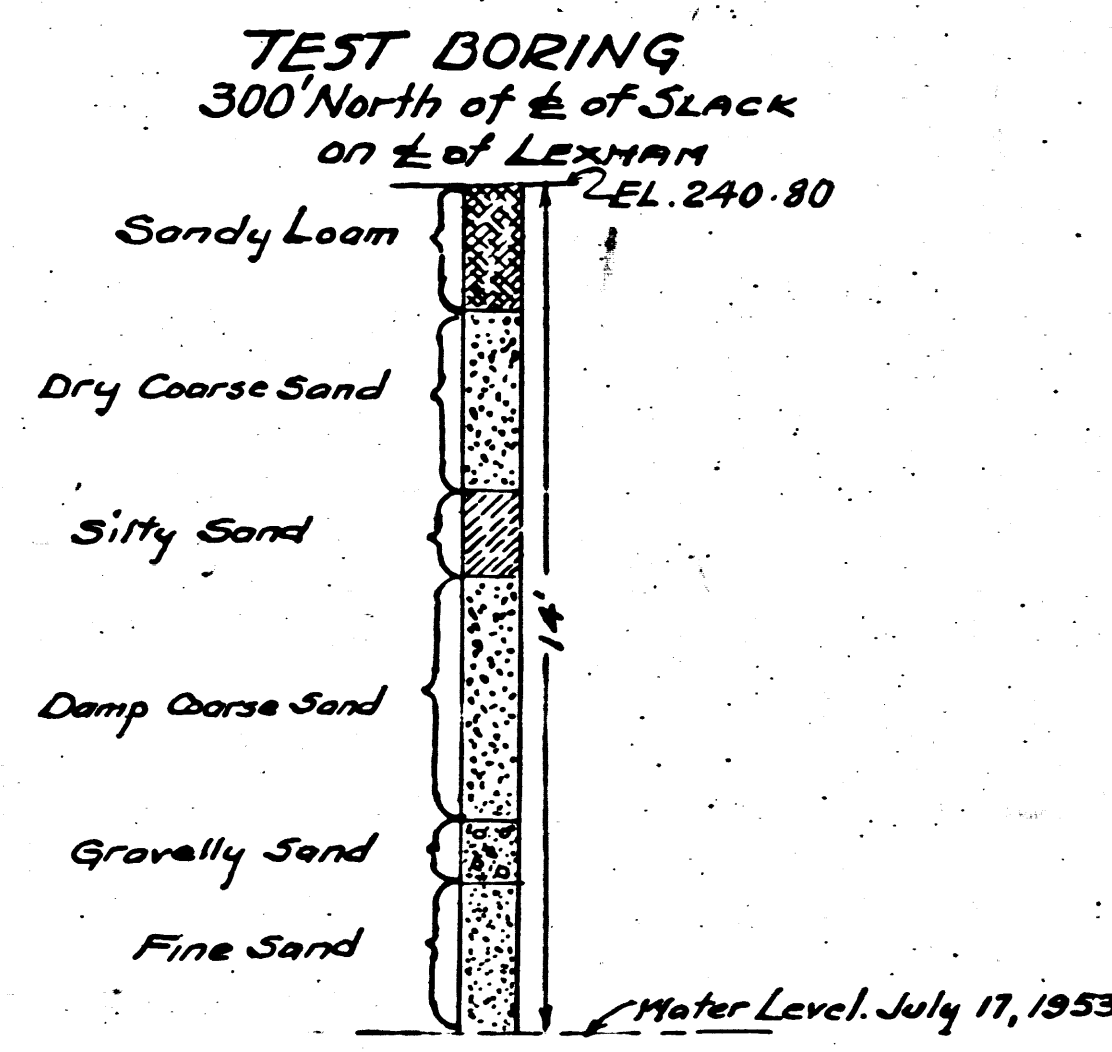


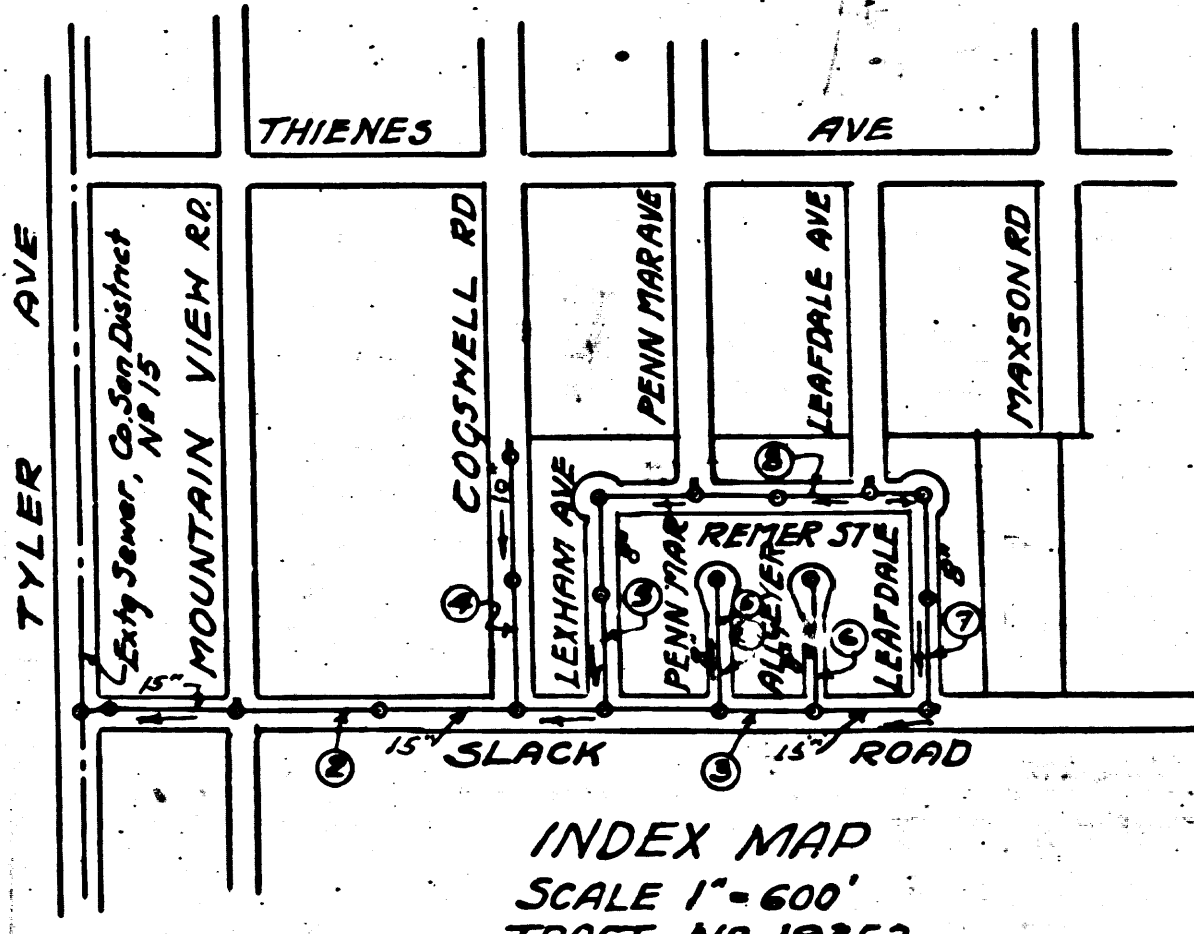
B.M. SY. 1279 Vol 2 Pg 570
 Elev. 243.395. L and Bench Nail in
 old conc headhall 15' N of Peck Rd, 100'
 N of Peck Slack Rd.



SHEET NO.	PAGES
1	7-5
2	6-8

PUENTE BLDG. DIST. NO. 2

- NOTE:
 Provide stakes on the property lines or property lines produced at right angles to the sewer line at the center line of each manhole.
 No representative of the County Engineer will survey or layout any portion of the work. The owner or his authorized representative shall furnish the County Engineer with grade sheets and stations for all house laterals and Y branches, and shall provide stakes for them at their proper locations with stationing plainly marked. Any change in location shall be requested in writing by the owner or his representative.
 No revisions shall be made in these plans without the approval of the County Engineer.
1. Use standard manhole frames and covers, S-a-117.
 2. Use standard strength pipe except as noted.
 3. Use joint Compound 'B' for all vitrified clay pipe joints per Spec's. Sec. 31
 4. Resurface all trench within paved area to meet L.A. County Road Dept. or Calif. State Highway Dept. requirements in accordance with permit.
 5. Encase four feet of sewer at points of interference with poles, S-a-119.
 6. House laterals to be constructed with inverts at property line...6.....feet below curb grade except as noted.
 7. All structures shall be brick sewer structures, S-a-104.
 8. For allowable leakage test, use Formula No. 2..... Spec's., Sec. 51.



INDEX MAP
 SCALE 1" = 600'
 TRACT NO. 19352
 P.C. 2763 J.N.F. 698

Sealed 1-5-54 WLF:am

PROFILE, ALIGNMENT AND GRADE OF
SANITARY SEWERS
 TO BE CONSTRUCTED IN

TRACT NO. 19352

PRIVATE CONTRACT NO. 2763
 W. S. 37
 SHEET 1 OF 2 SHEETS
 Scale: VERT. 1" = 4' HORIZ. 1" = 40' AUGUST 1953

PREPARED IN THE OFFICES OF
ADAMS & ELLS
 17455
 Reg. C. E. No. 7795
 FOR LEGEND SEE PLAN NO. S-a-64

NOTE:
 Grades to which this improvement is to be constructed are shown on plans and profiles. Grade points for top of curbs, center line of streets, or center line of alleys are shown by circles on profiles. At all points between designated points the grade shall be established so as to conform to a straight line drawn between said designated points.
 Elevations are in feet above U.S.G.S. datum or mean sea level.
 This drawing and the data hereon are hereby made a part of the specifications. Work shall be constructed according to specifications on file in the office of the County Engineer and shall be prosecuted only in the presence of the County Engineer.
 Before work can be started, the contractor must obtain a permit to excavate in County streets from the L.A. County Road Dept., 108 W. 2nd St. and make a deposit with the County Engineer, 733 L.A. County Engineering Building, sufficient to cover the cost of construction inspection and record plans.
 Approval of this plan by the County of Los Angeles does not constitute a representation as to the accuracy of the location of or the existence or non-existence of any underground utility, pipe, or structure within the limits of this project. This note applies to all sheets.
 If work is to be done in a State Highway, a permit must be obtained from the State of California, Division of Highways, 120 South Spring Street.

COUNTY OF LOS ANGELES, CALIFORNIA

Approved, William J. Fox, County Engineer
 Approved, A. M. Rawn
 CHIEF ENGR. CO. SAN. DIST. NO. 12
 Chief Deputy: *Ad Gregory*
 Office Engineer: *Edith Anderson*
 Checked by: *Robert E. Kuback* 9-11-53
 Office of County Engineer, Reg. C. E. No. 7842

P.C. 2763
 J.N.F. 698
 PAGE 1

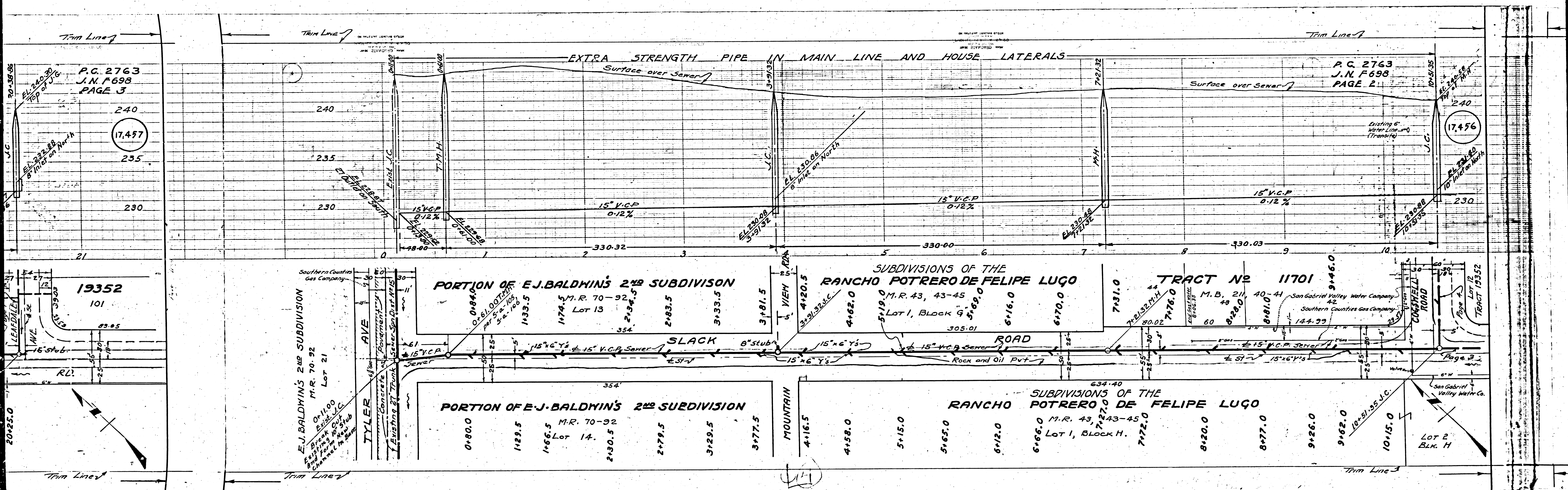
17455

TRACT NO. 19352

P.C. 2763
 J.N.F. 698
 TRACT NO. 19352

al.

1



P.C. 2763
J.N. F698
PAGE 3

17,457

19352
101

PORTION OF E.J. BALDWIN'S 2ND SUBDIVISION

SUBDIVISIONS OF THE RANCHO POTRERO DE FELIPE LUÑO

TRACT NO 11701

PORTION OF E.J. BALDWIN'S 2ND SUBDIVISION

SUBDIVISIONS OF THE RANCHO POTRERO DE FELIPE LUÑO

P.C. 2763
J.N. F698
PAGE 2

17,456

Page 2

Page 3

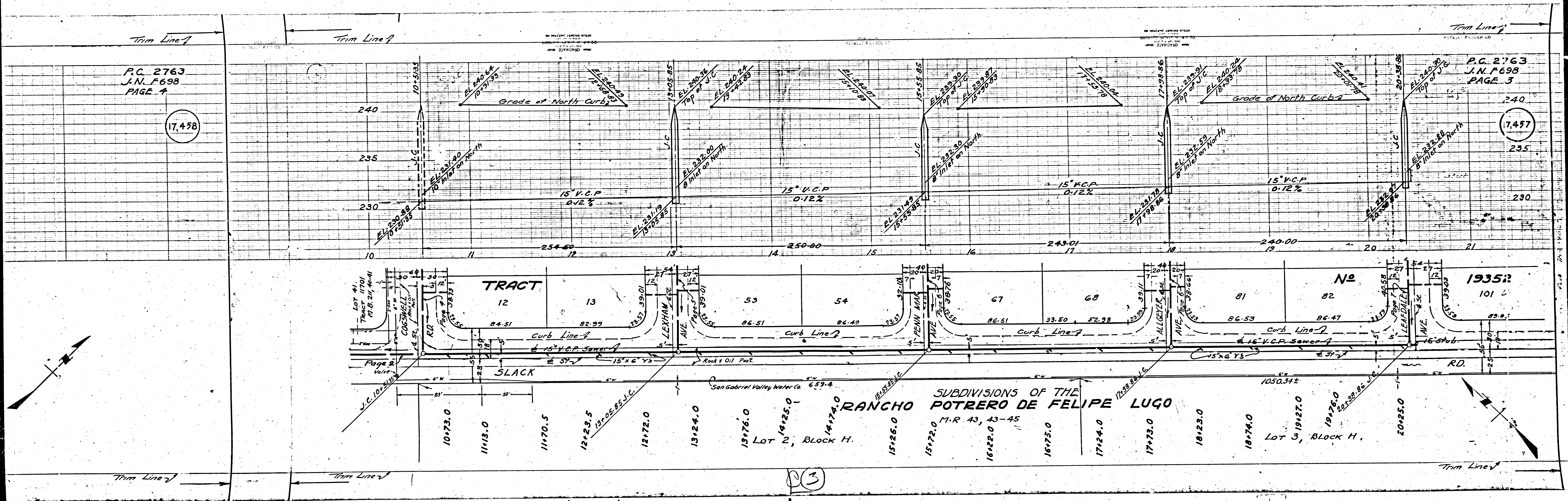
11

P.C. 2763
J.N.F.698
PAGE 4

17,458

P.C. 2763
J.N.F.698
PAGE 3

7,497

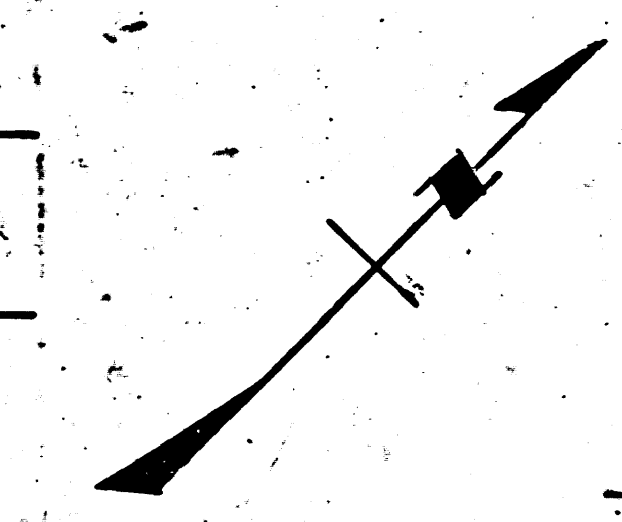
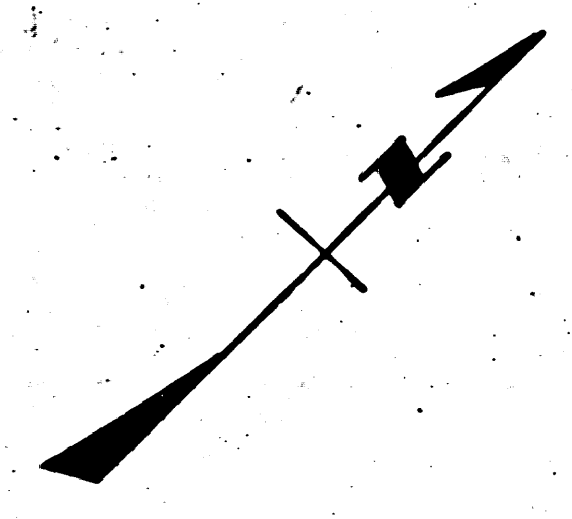
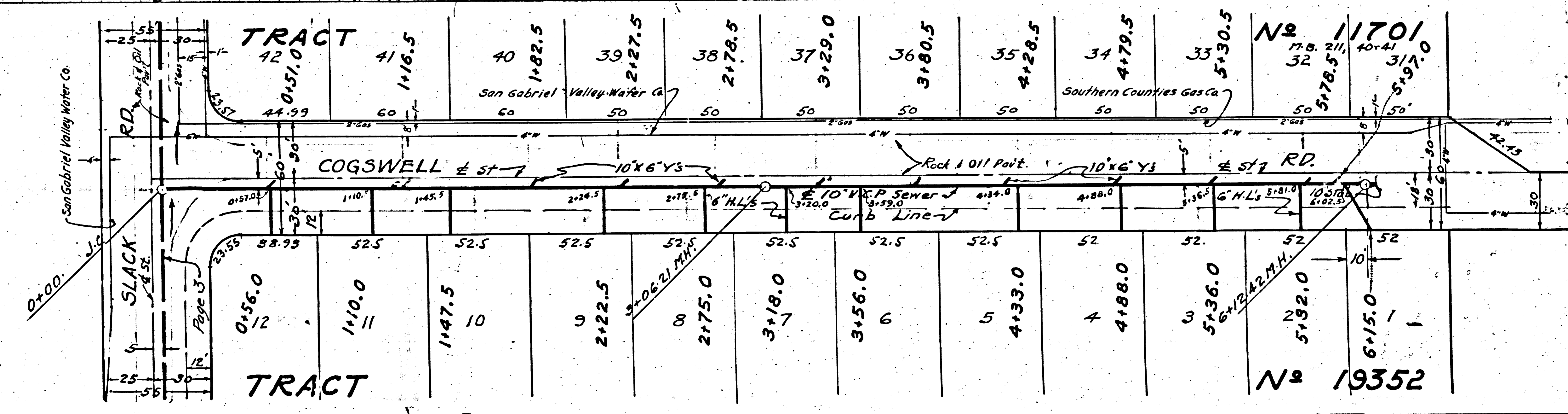
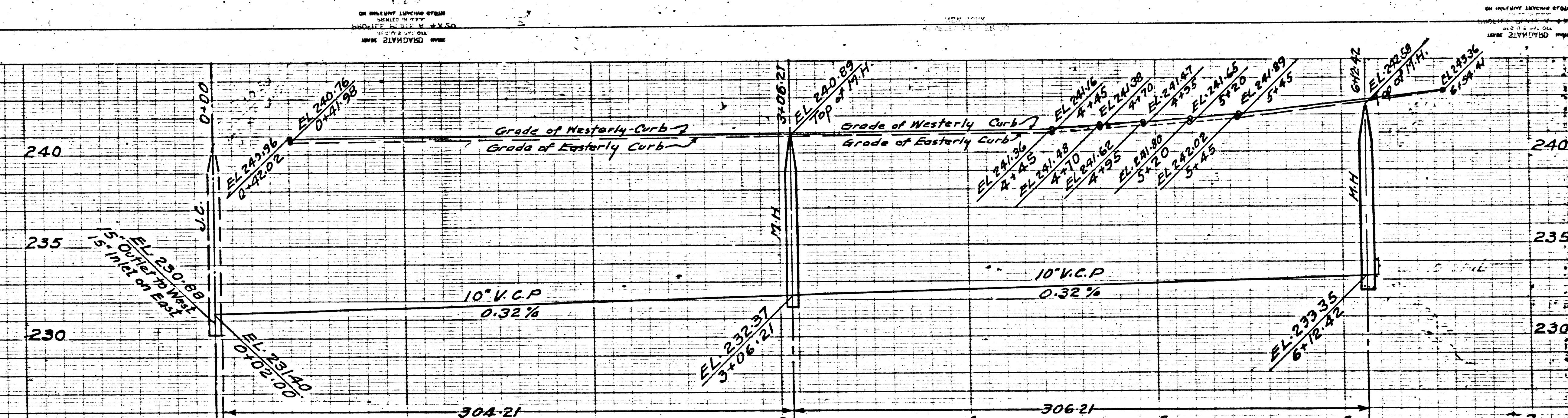


03

P.C. 2763
J.N. F698
PAGE 5

17,459

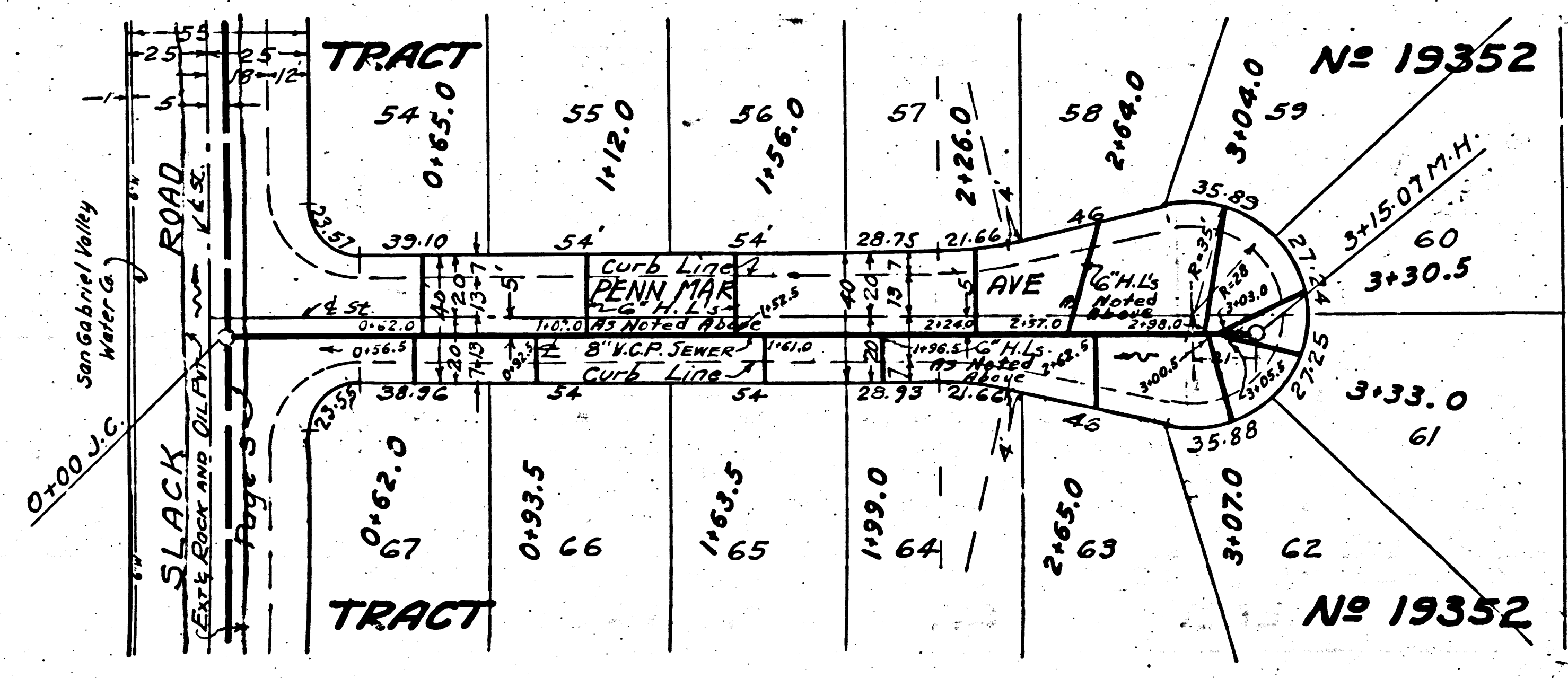
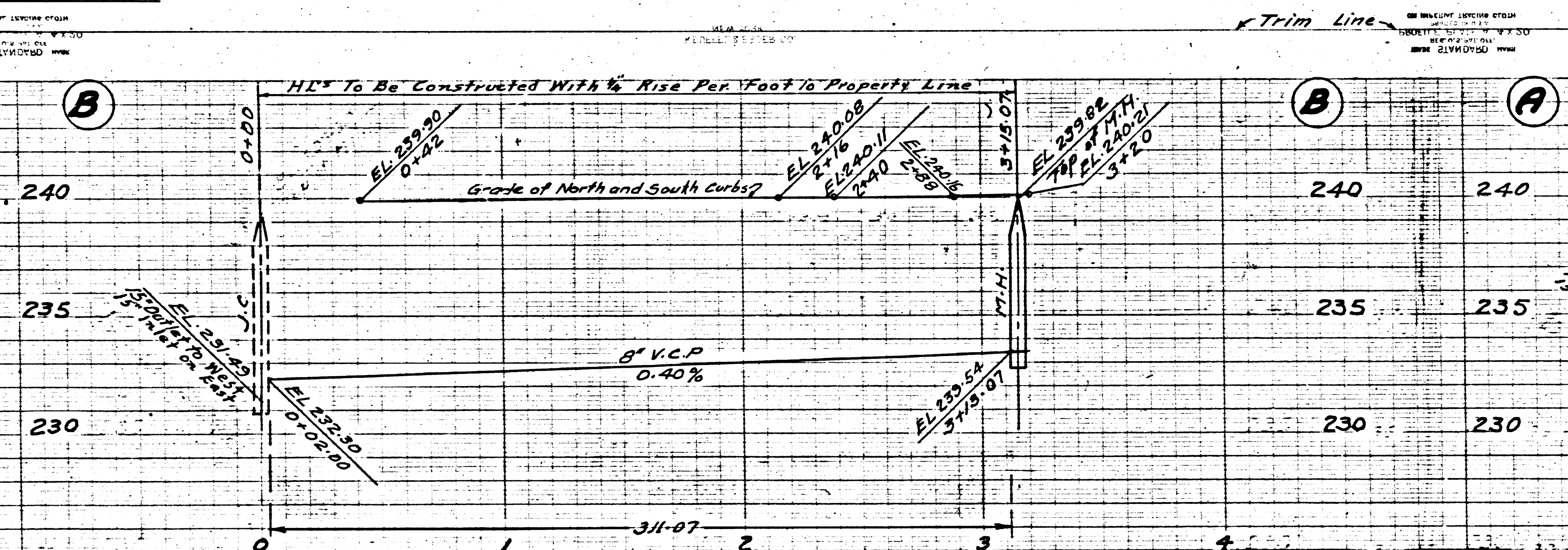
P.C. 27
J.N. F698
PAGE 4



17

P.C. 2763
J.N.F 698
PAGE 7

17,461

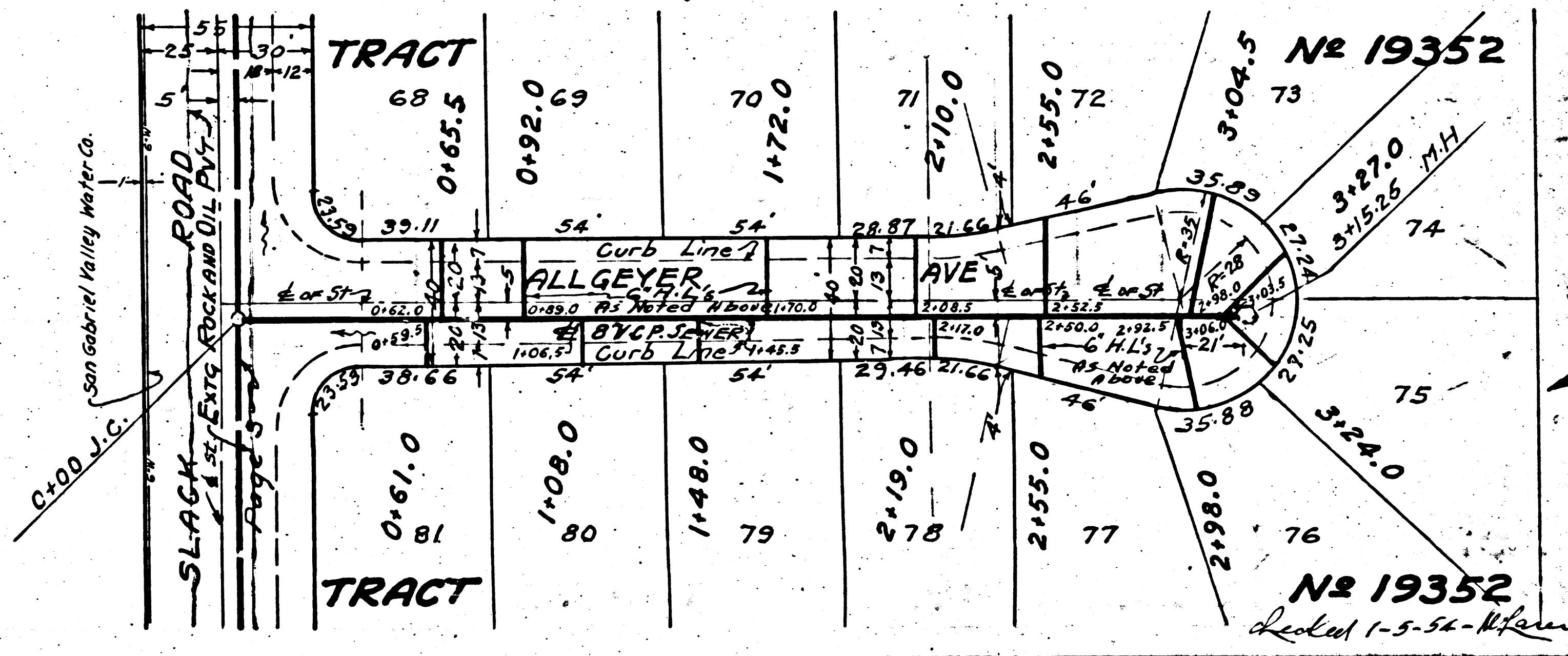
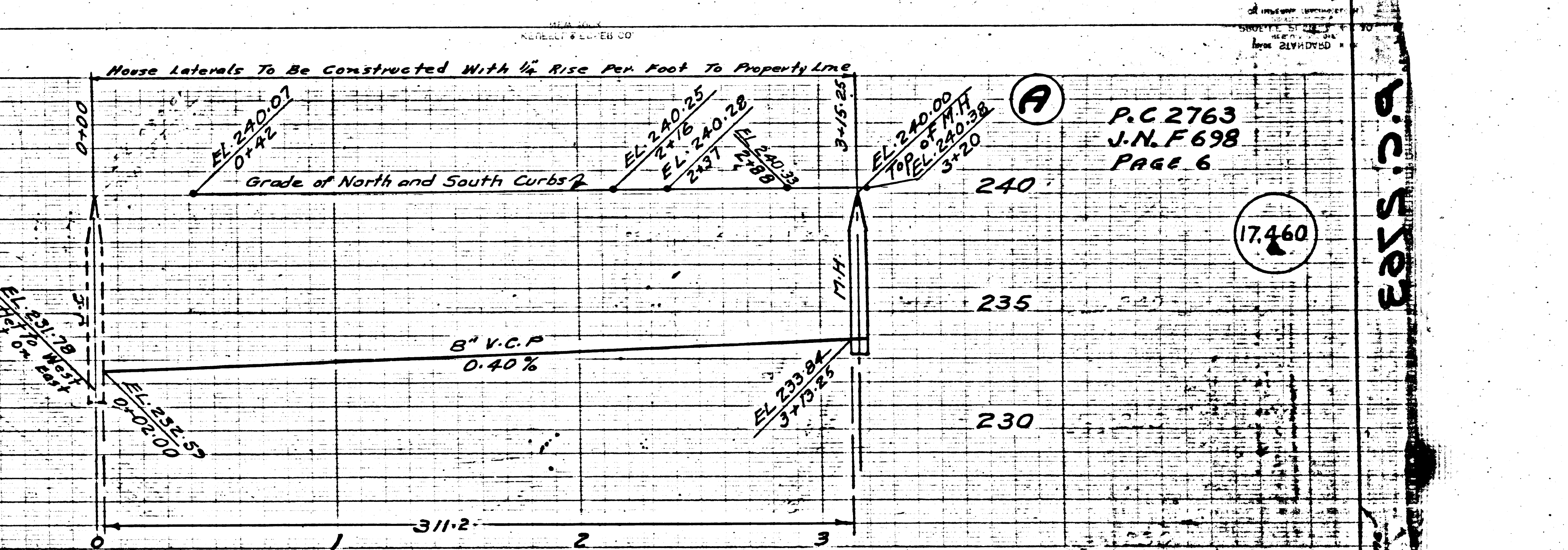


Trim Line

17

P.C. 2763
J.N.F 698
PAGE 6

17,460



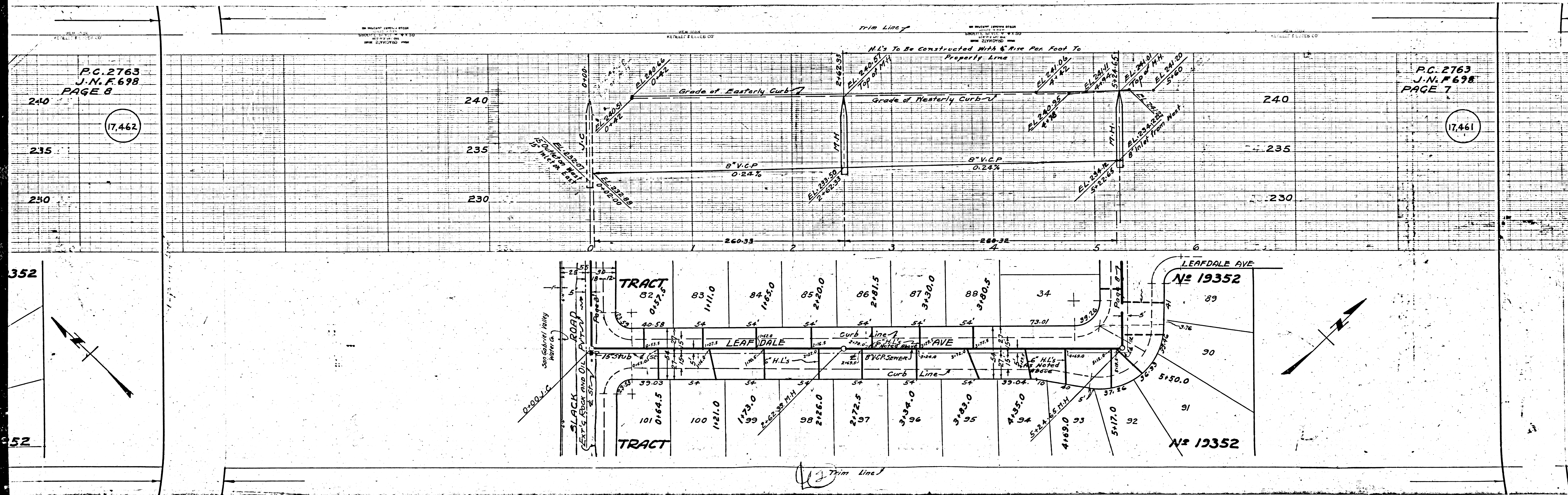
P.C. 2763
J.N.F 698
PAGE 6

P.C. 2763
J.N.F 698
PAGE 6

17,460

P.C. 2763
J.N.F. 698
PAGE 8

P.C. 2763
J.N.F. 698
PAGE 7



17,462

17,461

352

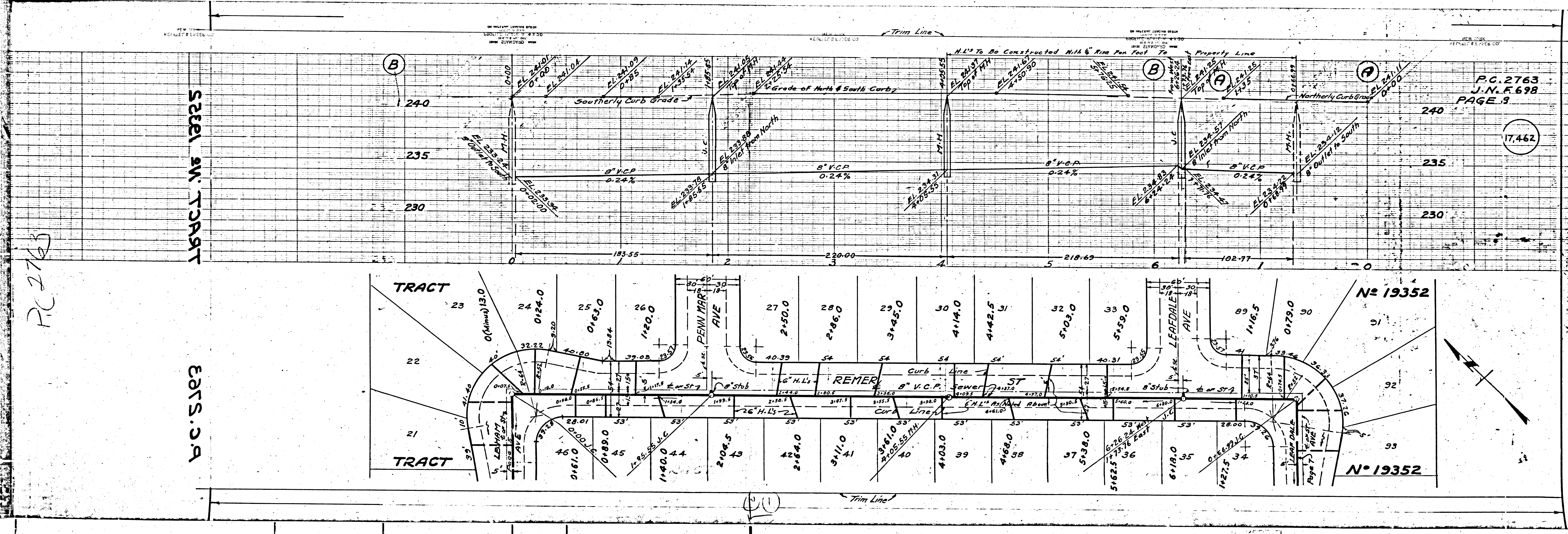
352

Trim Line

3281 SW TRACT

EATS. D.A

P.C. 2763



P.C. 2763
J.N.F. 698
PAGE 3

17,462

N^o 19352

N^o 19352

