

P.C. 2768
J.N. F-704
PAGE 2

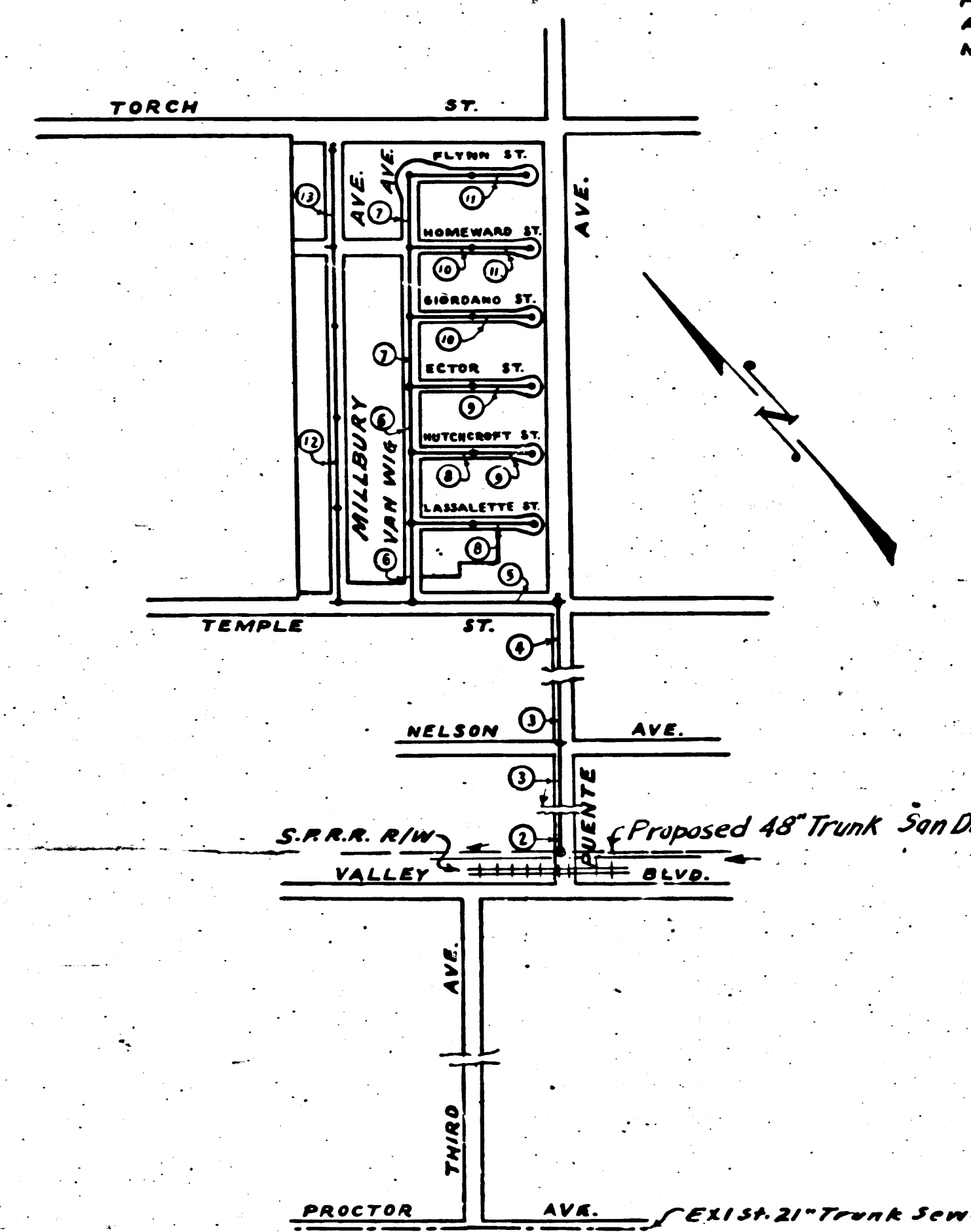
(17,879)

295

290

285

B.M. 56-1085 ELEV 316130
Lead of Brass Nail in S.E. Cor. of
Circ. Base of Pump Motor 48" x
50" W. of Torch St. 50' West
of E. of Puente Ave.



KEY MAP
SCALE: 1"=600'
P.C. 2768 J.N. F-704

Form - 38 C-5

Trim Line

PUENTE BUILDING DISTRICT NO 2.

NOTE:

PROVIDE STAKES ON THE PROPERTY LINES OR PROPERTY LINES PRODUCED AT RIGHT ANGLES TO THE SEWER LINE AT THE CENTER LINE OF EACH MANHOLE.

NO REPRESENTATIVE OF THE COUNTY ENGINEER WILL SURVEY OR LAY OUT ANY PORTION OF THE WORK.

THE OWNER OR HIS AUTHORIZED REPRESENTATIVE SHALL FURNISH THE COUNTY ENGINEER WITH GRADE SHEETS AND STATIONS FOR ALL HOUSE LATERALS AND Y BRANCHES AND SHALL PROVIDE STAKES FOR THEM AT THEIR PROPER LOCATIONS WITH STATIONING PLAINLY MARKED. ANY CHANGE IN LOCATION SHALL BE REQUESTED IN WRITING BY THE OWNER OR HIS REPRESENTATIVE. NO REVISIONS SHALL BE MADE IN THESE PLANS WITHOUT APPROVAL OF THE COUNTY ENGINEER.

- 1- USE STANDARD MANHOLE FRAMES AND COVERS, S-2-117, EXCEPT AS NOTED.
 - 2- USE STANDARD STRENGTH PIPE, EXCEPT AS NOTED.
 - 3- USE CEMENT MORTAR FOR ALL VITRIFIED CLAY PIPE JOINTS.
 - 4- RESURFACE ALL TRENCH WITHIN PAVED AREA TO MEET L.A. COUNTY ROAD DEPT. OR CALIF. STATE HWY. DEPT. REQUIREMENTS IN ACCORDANCE WITH PERMIT.
 - 5- ENCASE FOUR FEET OF SEWER AT POINTS OF INTERFERENCE WITH POLES, S-2-119.
 - 6- HOUSE LATERALS TO BE CONSTRUCTED WITH INVERTS AT PROPERTY LINE 6 FEET BELOW CURB GRADE, EXCEPT AS NOTED.
 - 7- ALL STRUCTURES SHALL BE BRICK SEWER STRUCTURES, S-2-104, EXCEPT AS NOTED.
 - 8- FOR ALLOWABLE LEAKAGE TEST, USE FORMULA NO 1, SPEC'S. SEC. 51.
 - 9- MANHOLE TOPS IN UNIMPROVED RIGHTS-OF-WAY TO BE 6" ABOVE FINISHED GRADE.
- Wire & Tags not required.

SHEET	PAGES
1	1-3
2	4-8
3	9-13

Checked 2-13-54 W. H. ...

Trim Line

PROFILE, ALIGNMENT AND GRADE OF SANITARY SEWERS TO BE CONSTRUCTED IN

TRACT NO 18121

P.C. 2768
J.N. F-704
PAGE 1
J.N. 0754.92

(17,878)

(13)

PRIVATE CONTRACT NO 2768
W.S. 46
3 SHEETS

VERT. 1"=4'
HORIZ. 1"=40'

AUG., 1953

PREPARED IN THE OFFICE OF
HAROLD M. TEGART
BY *Harold M. Tegart* R.E. NO 2151
FOR LEGEND SEE PLAN NO S-2-64

NOTE:

GRADES TO WHICH THIS IMPROVEMENT IS TO BE CONSTRUCTED ARE SHOWN ON PLANS AND PROFILES. GRADE POINTS FOR TOP OF CURB, CENTER LINE OF STREET OR CENTER LINE OF ALLEY ARE SHOWN BY CIRCLES ON PROFILE. AT ALL POINTS BETWEEN DESIGNATED POINTS THE GRADE SHALL BE ESTABLISHED SO AS TO CONFORM TO A STRAIGHT LINE DRAWN BETWEEN SAID DESIGNATED POINTS. ELEVATIONS ARE IN FEET ABOVE U.S. M.S. DATUM OR MEAN SEA LEVEL. THIS DRAWING AND THE DATA HEREON ARE HEREBY MADE A PART OF THE SPECIFICATIONS. WORK SHALL BE CONSTRUCTED ACCORDING TO SPECIFICATIONS ON FILE IN THE OFFICE OF THE COUNTY ENGINEER AND SHALL BE PROSECUTED ONLY IN THE PRESENCE OF THE COUNTY ENGINEER.

BEFORE WORK CAN BE STARTED, THE CONTRACTOR MUST OBTAIN A PERMIT TO EXCAVATE IN COUNTY STREETS FROM THE L.A. COUNTY ROAD DEPT., 108 W. 2ND ST. AND MAKE A DEPOSIT WITH THE COUNTY ENGINEER, 733 L.A. CO. ENGR. BLDG., SUFFICIENT TO COVER THE COST OF CONSTRUCTION INSPECTION AND RECORD PLANS.

APPROVAL OF THIS PLAN BY THE COUNTY OF LOS ANGELES DOES NOT CONSTITUTE A REPRESENTATION AS TO THE ACCURACY OF THE LOCATION OF, OR THE EXISTENCE OR NON-EXISTENCE OF, ANY UNDERGROUND UTILITY, PIPE OR STRUCTURE WITHIN THE LIMITS OF THIS PROJECT. (THIS NOTE APPLIES TO ALL SHEETS)

WHERE WORK IS TO BE DONE IN A STATE HIGHWAY, A PERMIT MUST BE OBTAINED FROM THE STATE OF CALIFORNIA DIVISION OF HIGHWAYS, 120 SO. SPRING ST. BY THE CONTRACTOR AND POST HIS BOND AS REQUIRED.

COUNTY OF LOS ANGELES, CALIF.

APPROVED, WILLIAM J. FOX, COUNTY ENGINEER.

APPROVED, A.M. RAWN, CHIEF ENGR. - CO. SAN. DIST. NO 15

BY *Richard E. Kubus* CHIEF DEPUTY

BY *Richard E. Kubus* OFFICE ENGINEER

CHECKED BY *Richard E. Kubus* 11-30-53
OFFICE OF COUNTY ENGINEER, REG. C.E. NO 7160

PC 2768
J.N. F-704
PAGE 1

820

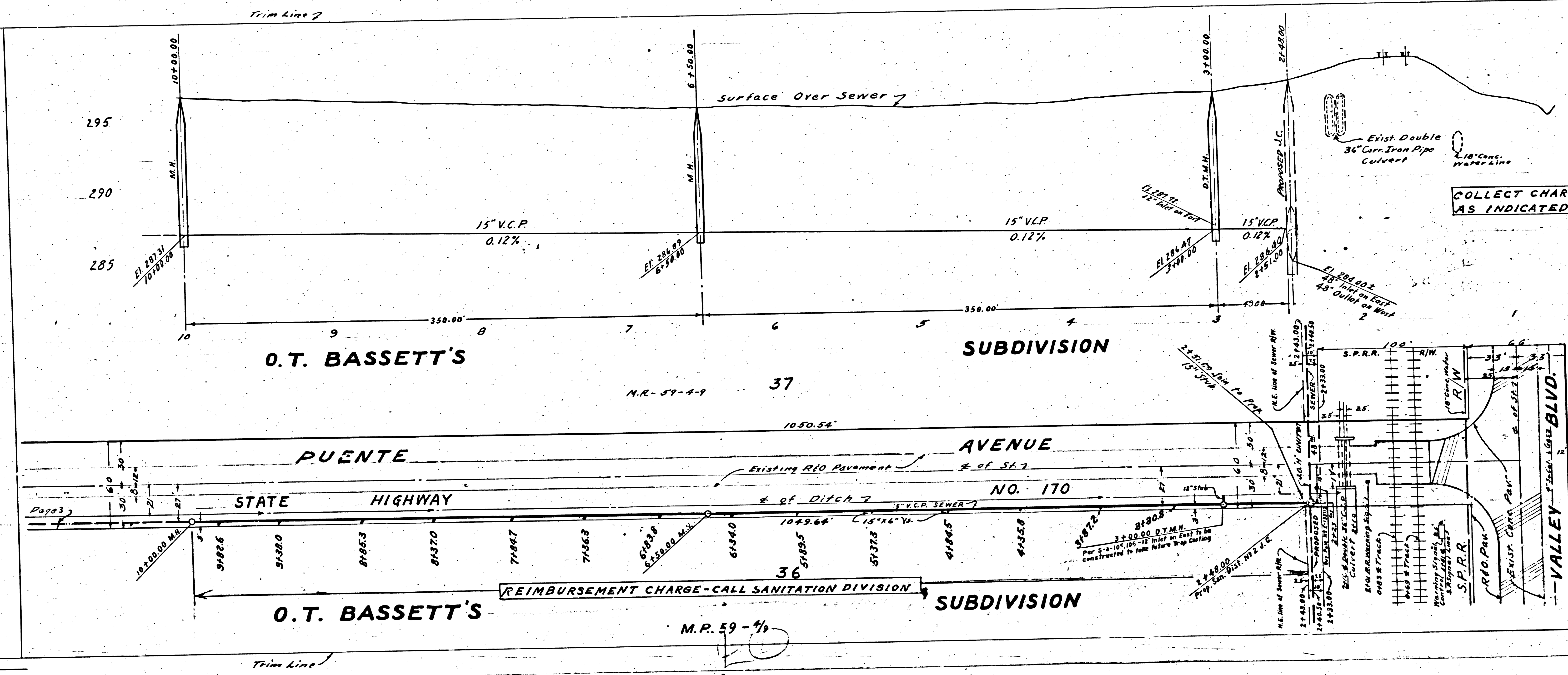
CHARGES CATED

P.C. 2768
J.N. F-704
PAGE 3

17,880

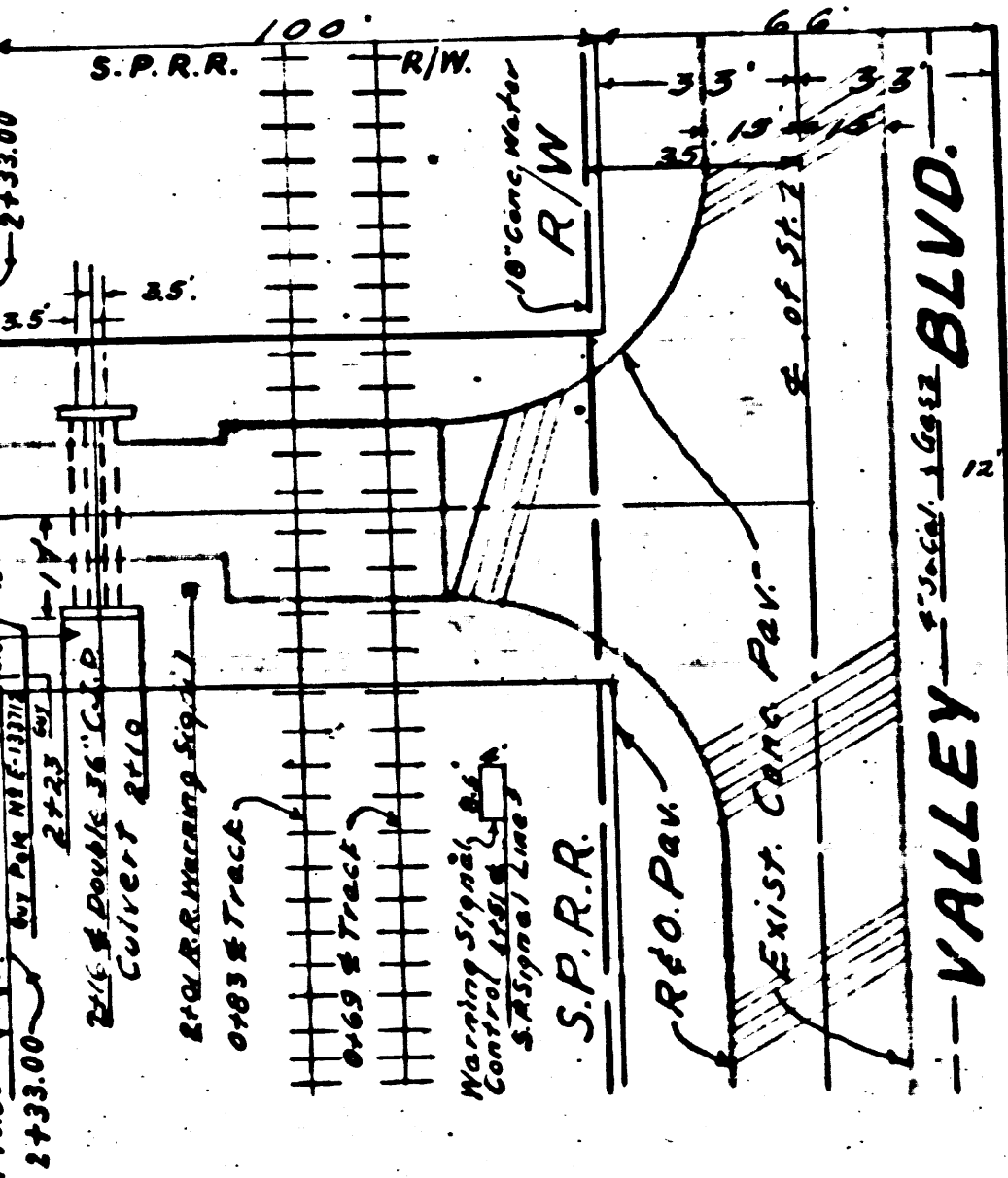
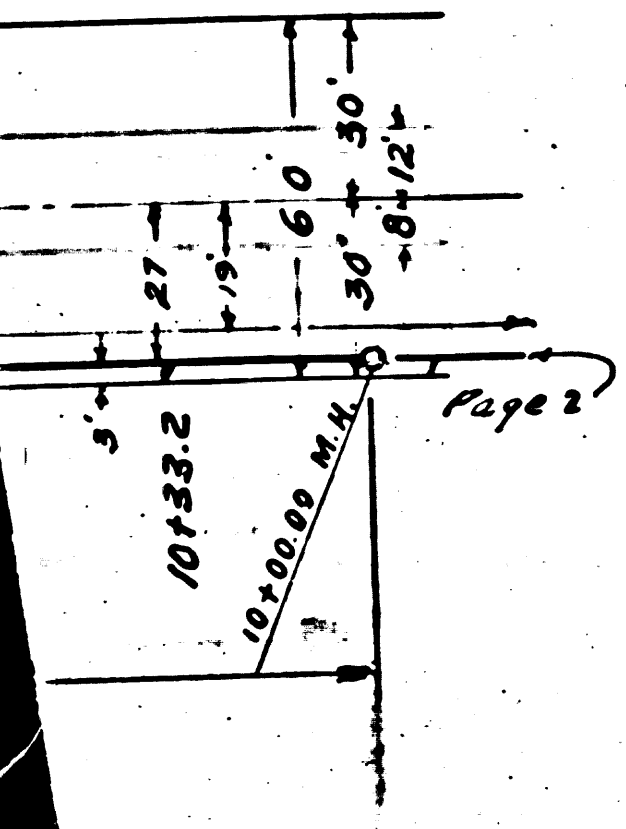
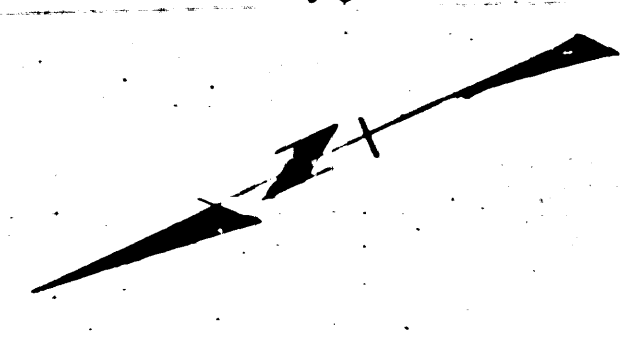
P.C. 2768
J.N. F-704
PAGE 2

17,879



COLLECT CHARGES AS INDICATED

REIMBURSEMENT CHARGE-CALL SANITATION DIVISION



Trim Line

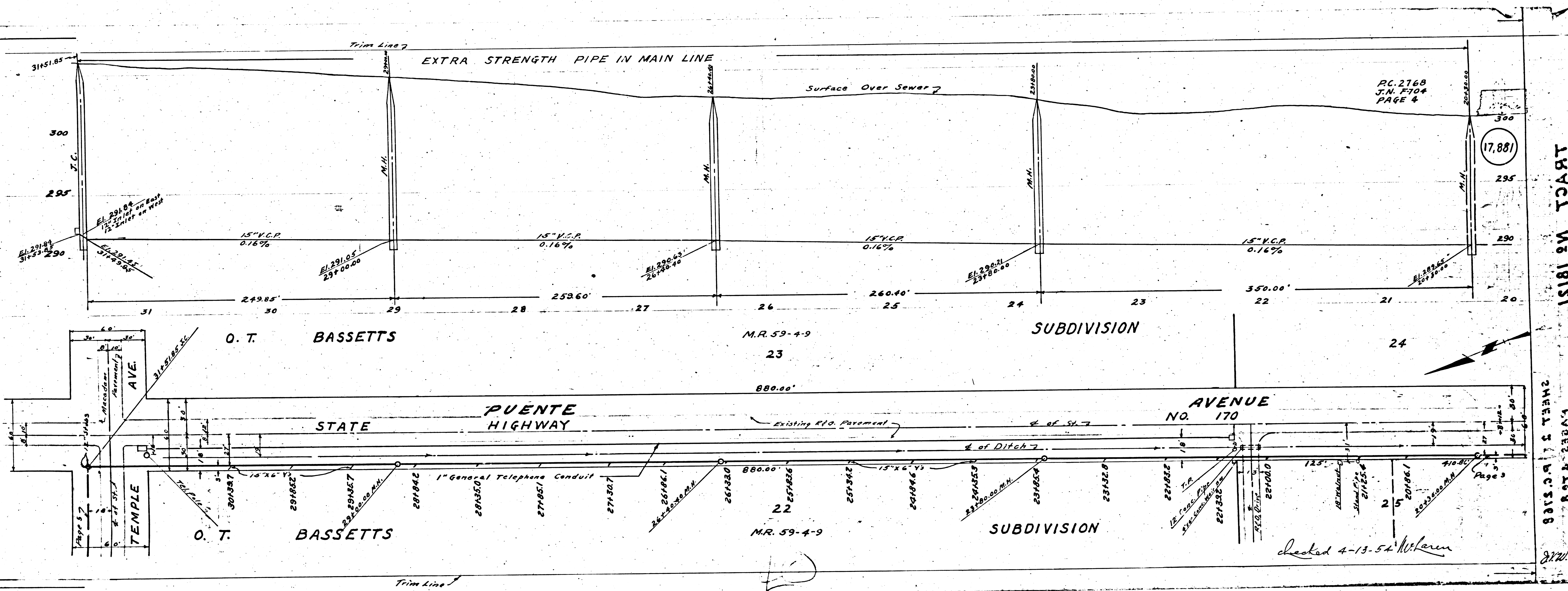
M.P. 59-4/9

Trim Line

P.C. 2768
J.N. F-704
PAGE 5

(17,882)

CONNECTION CHARGES INDICATED



P.C. 2768
J.N. F-704
PAGE 4

(17,881)

TRACT NO 18151

SHEET 5 OF 5

checked 4-13-54 Wilcox

P.C. 2768
J.N. F-704
PAGE 6

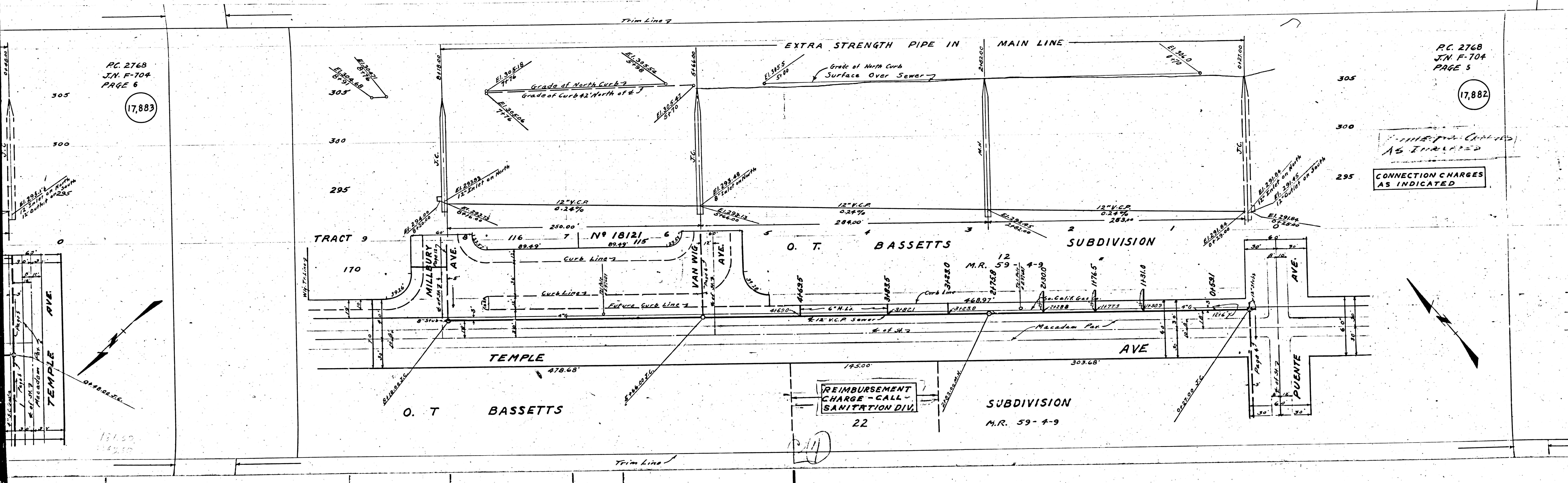
(17,883)

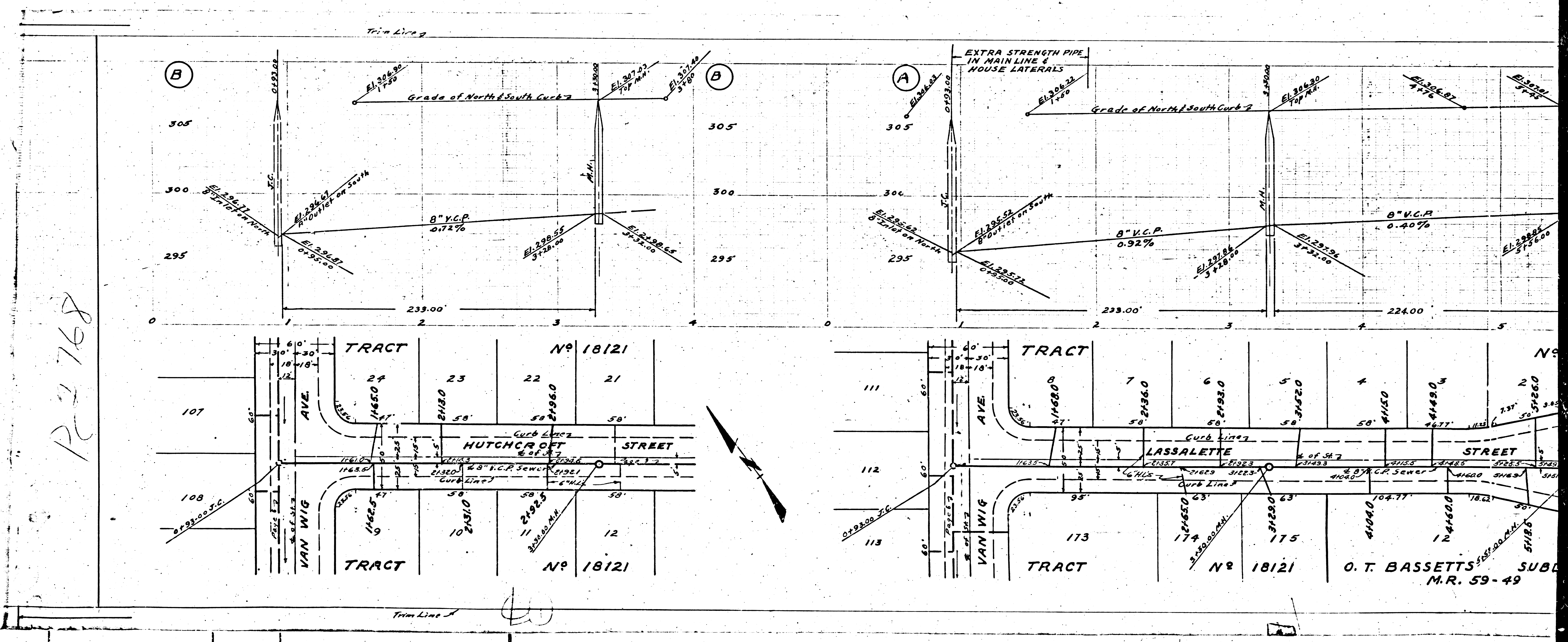
P.C. 2768
J.N. F-704
PAGE 5

(17,882)

CONNECTION CHARGES
AS INDICATED

CONNECTION CHARGES
AS INDICATED





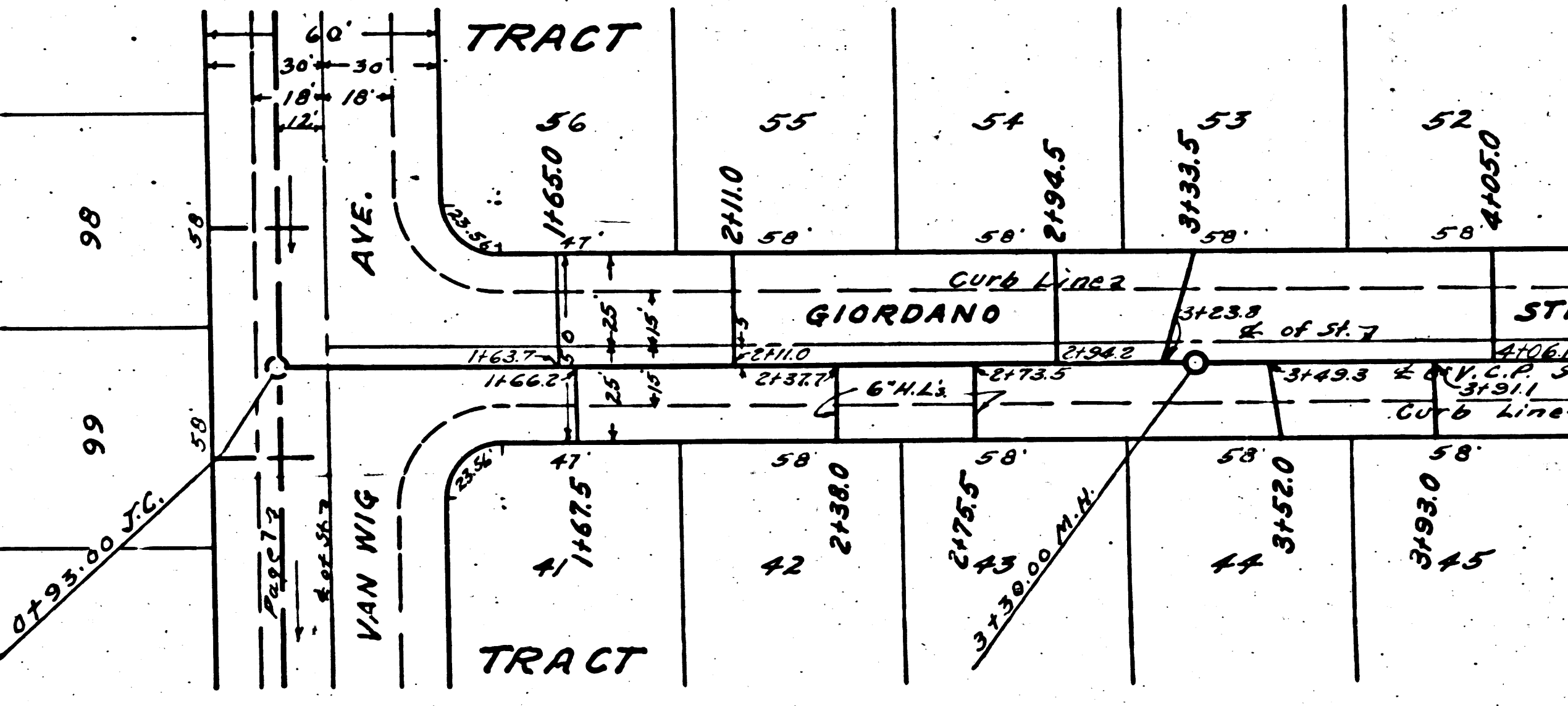
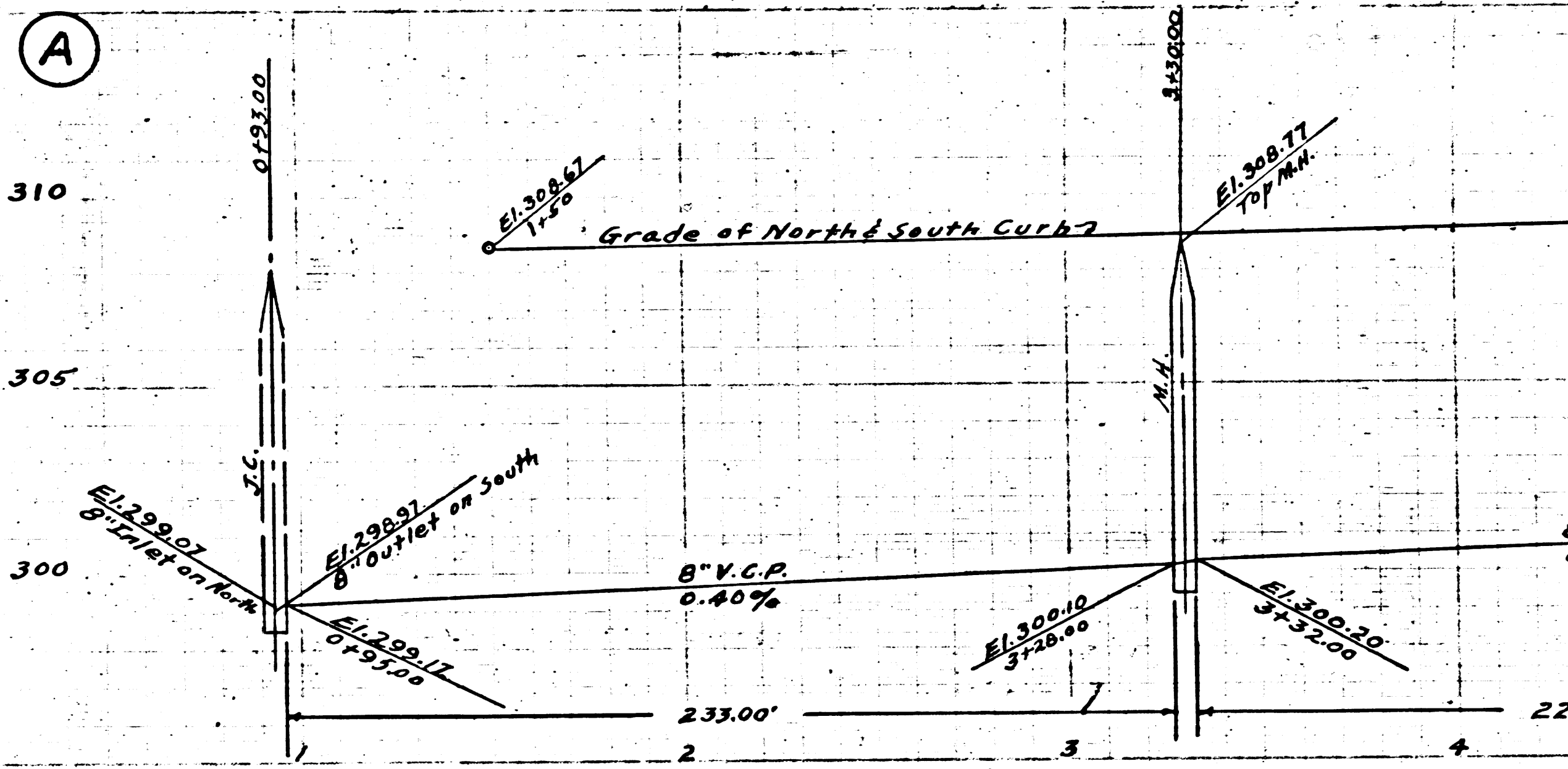
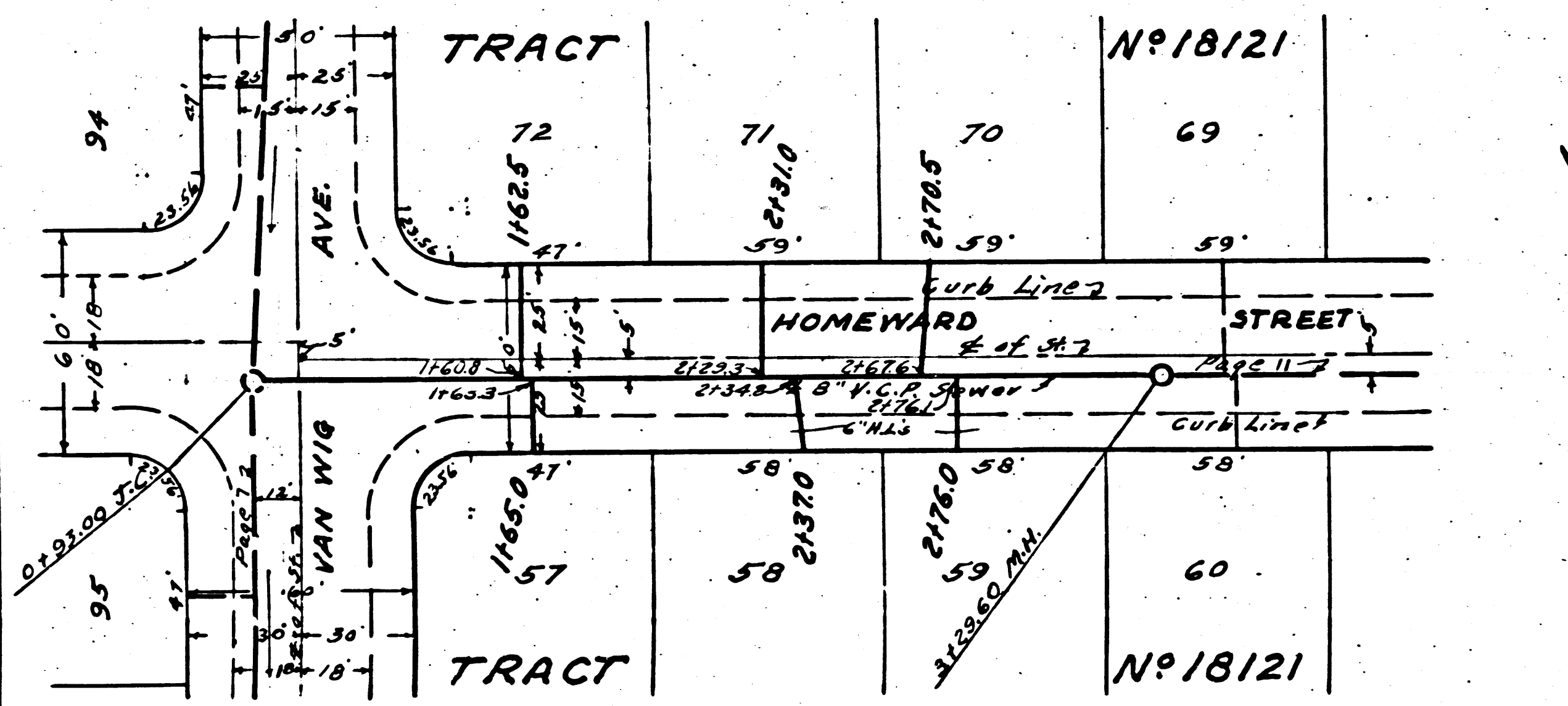
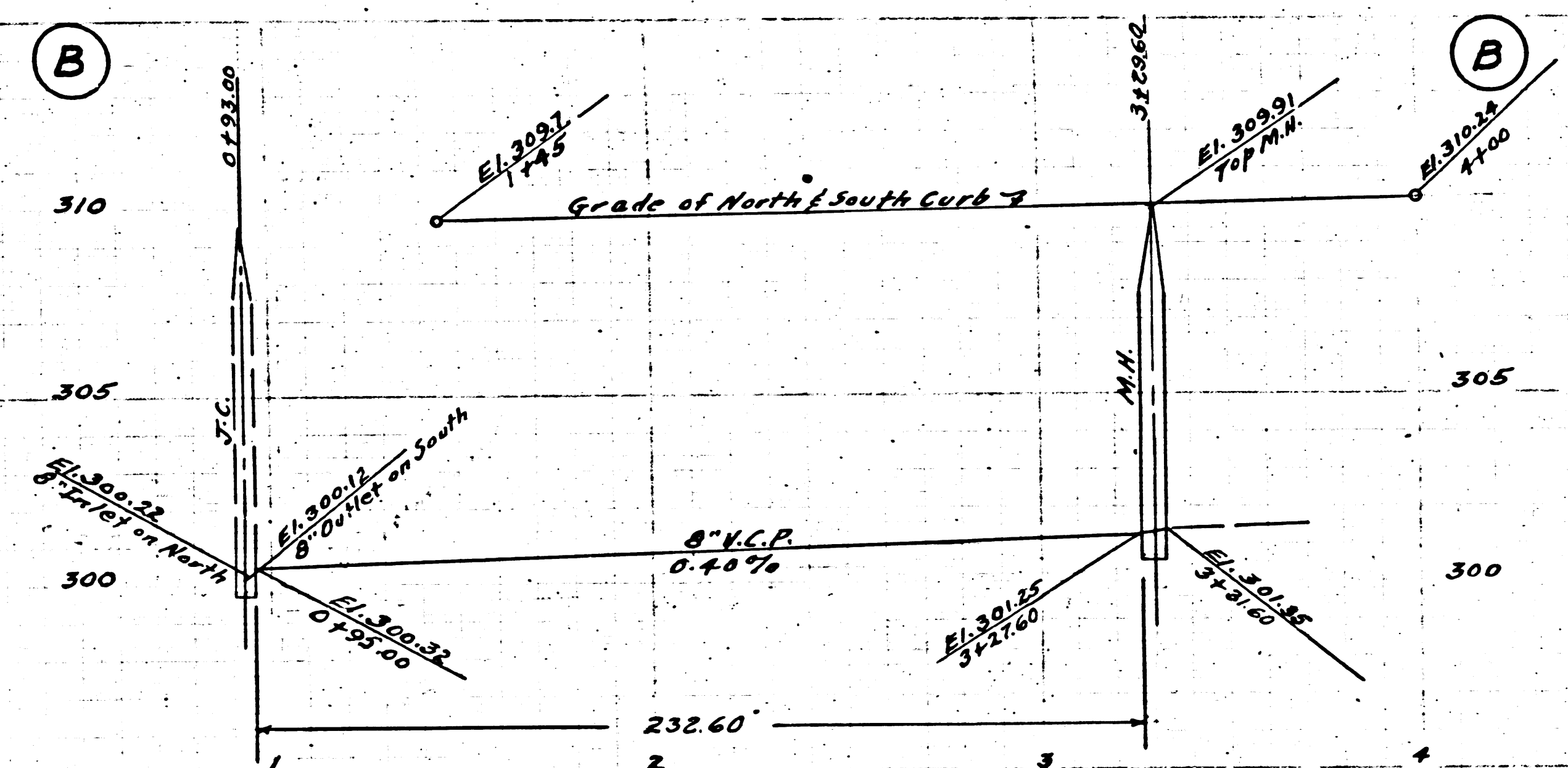
P-2768

(4)

O. T. BASSETTS SUBD. M.R. 59-49

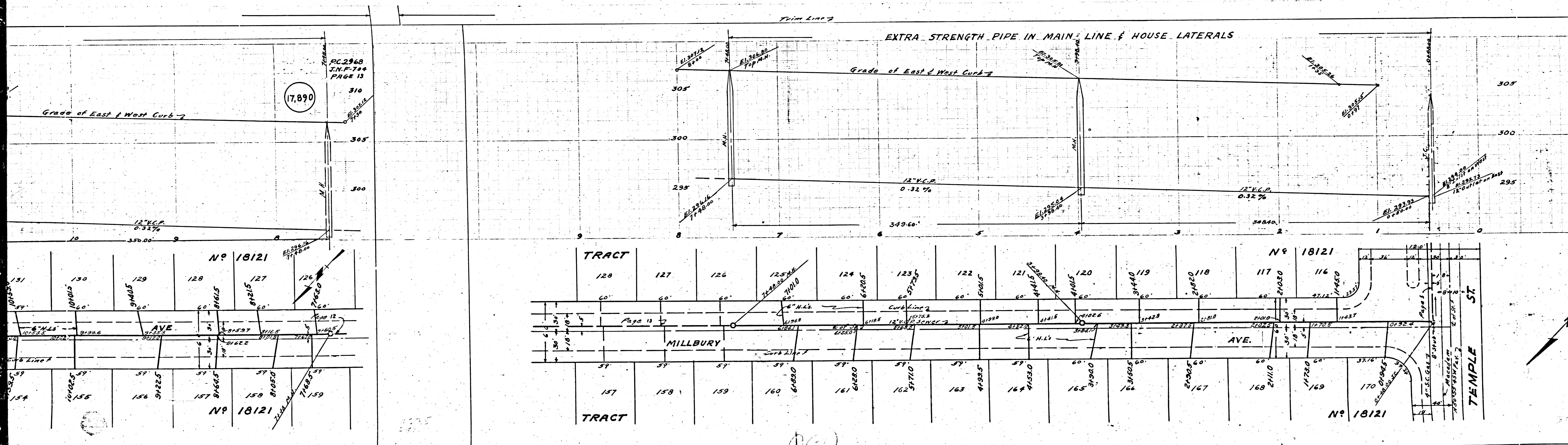
RC. 2768
J.N.F-704
PAGE 11

17,888



RC. 2768
J.N.F-704
PAGE 10

17,887



PC 2968
J.N.P. 744
PAGE 13

(17,890)

EXTRA STRENGTH PIPE IN MAIN LINE & HOUSE LATERALS

Grade of East & West Curb -7

12" V.C.P.
0.32%

12" V.C.P.
0.32%

TRACT

TRACT

128	127	126	125	124	123	122	121	120	119	118	117	116	115	114	113	112	111	110	109	108	107	106	105	104	103	102	101	100
60'	60'	60'	60'	60'	60'	60'	60'	60'	60'	60'	60'	60'	60'	60'	60'	60'	60'	60'	60'	60'	60'	60'	60'	60'	60'	60'	60'	60'
157	158	159	160	161	162	163	164	165	166	167	168	169	170	171	172	173	174	175	176	177	178	179	180	181	182	183	184	185

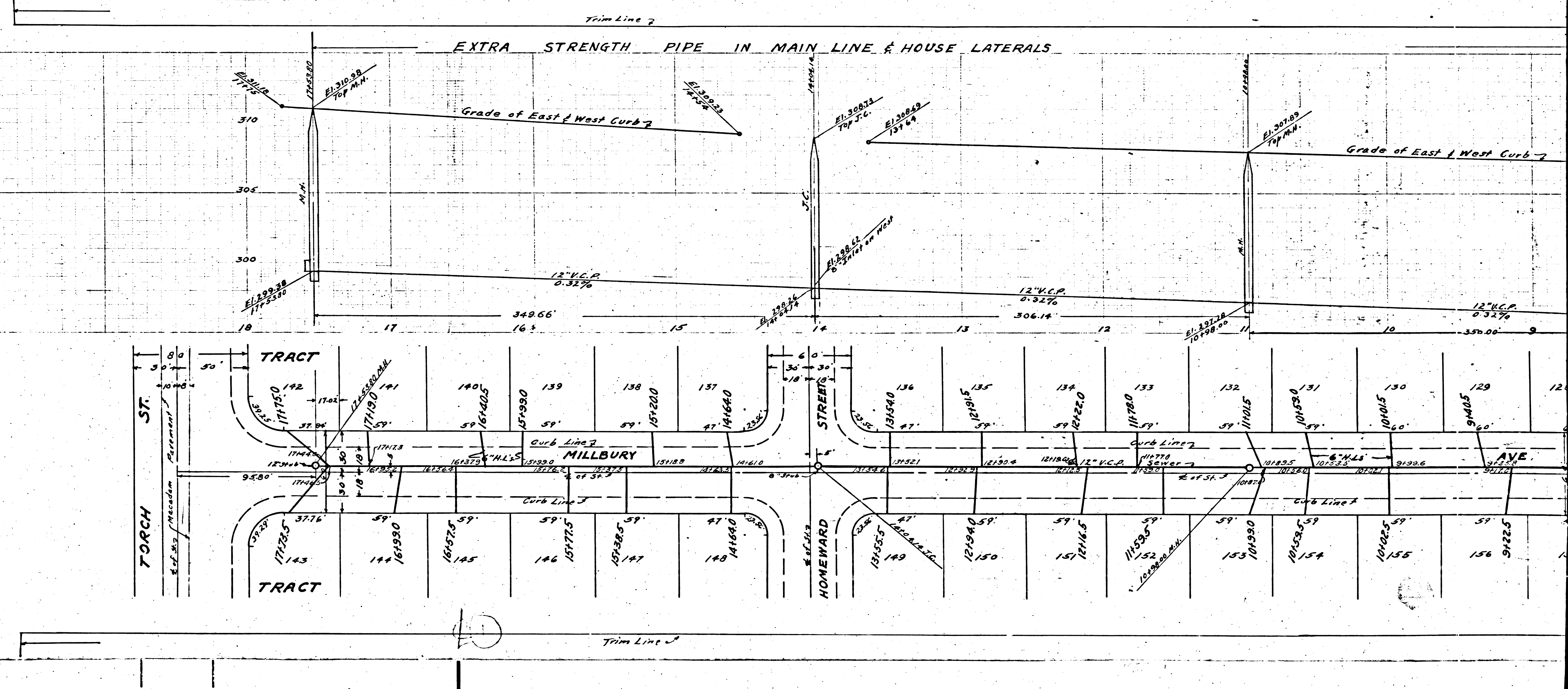
MILLBURY

AVE.

TEMPLE ST.

PC 2968
J.N.P. 744
PAGE 13

PC 4768

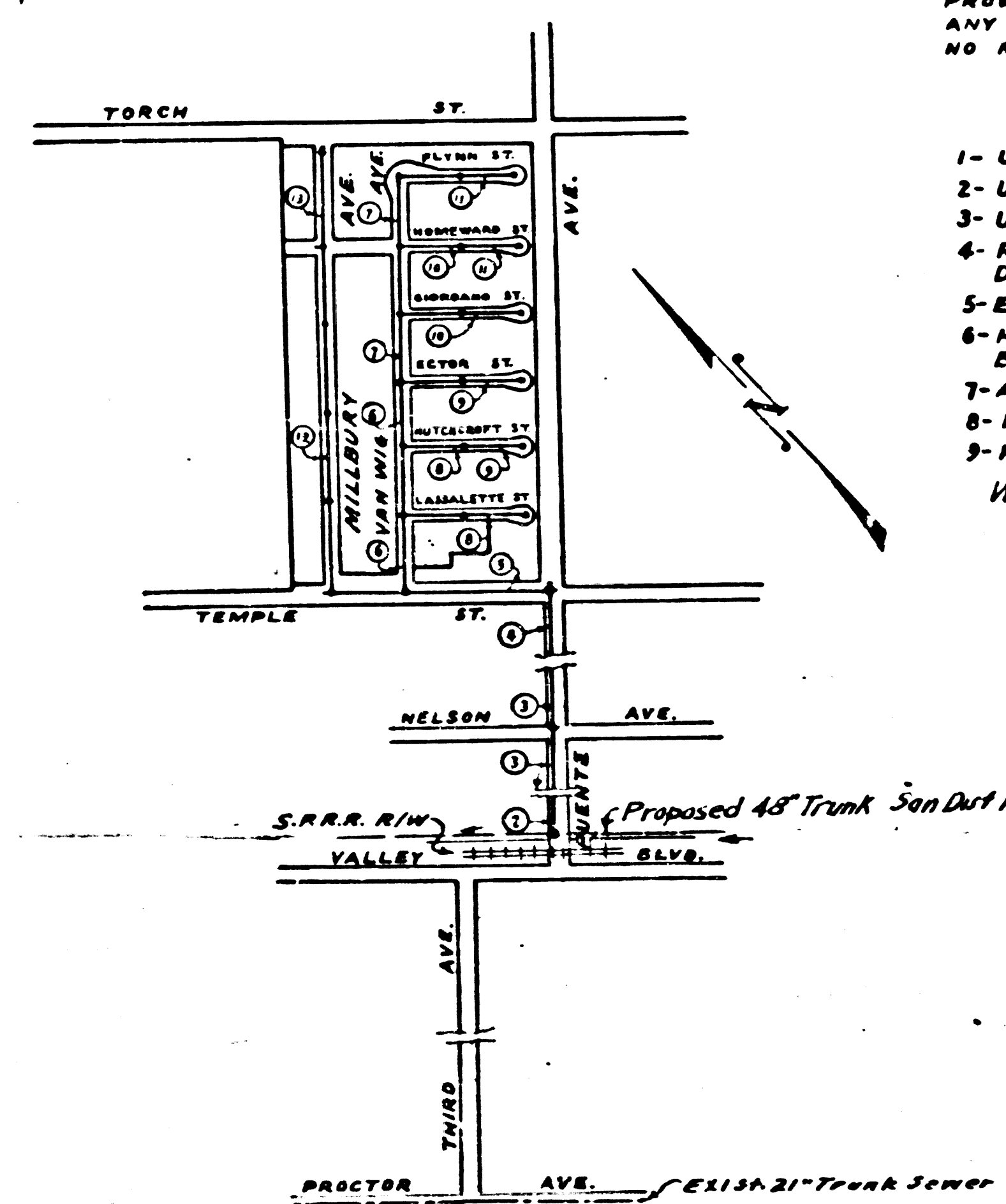


P.C. 2768
J.N. F-704
PAGE 2

(17,877)

295
290
285

B.M. 56-1085 ELEV 314.30
Low of Brass Nail in S.E. Cor. of
Cone Base of Pump Motor, 45' S.
50' W. of Torch St. & 80' West
of E. of Puente Ave.



KEY MAP
SCALE: 1"=60'
P.C. 2768 J.N. F-704
Frame - 39, C-5

PUENTE BUILDING DISTRICT NO. 2.

NOTE:
PROVIDE STAKES ON THE PROPERTY LINES OR PROPERTY LINES PRODUCED AT RIGHT ANGLES TO THE SEWER LINE AT THE CENTER LINE OF EACH MANHOLE.
NO REPRESENTATIVE OF THE COUNTY ENGINEER WILL SURVEY OR LAY OUT ANY PORTION OF THE WORK.
THE OWNER OR HIS AUTHORIZED REPRESENTATIVE SHALL FURNISH THE COUNTY ENGINEER WITH GRADE SHEETS AND STATIONS FOR ALL HOUSE LATERALS AND 'Y' BRANCHES AND SHALL PROVIDE STAKES FOR THEM AT THEIR PROPER LOCATIONS WITH STATIONING PLAINLY MARKED. ANY CHANGE IN LOCATION SHALL BE REQUESTED IN WRITING BY THE OWNER OR HIS REPRESENTATIVE. NO REVISIONS SHALL BE MADE IN THESE PLANS WITHOUT APPROVAL OF THE COUNTY ENGINEER.

- 1- USE STANDARD MANHOLE FRAMES AND COVERS, S-2-117, EXCEPT AS NOTED.
 - 2- USE STANDARD STRENGTH PIPE, EXCEPT AS NOTED.
 - 3- USE CEMENT MORTAR FOR ALL VITRIFIED CLAY PIPE JOINTS.
 - 4- RESURFACE ALL TRENCH WITHIN PAVED AREA TO MEET L.A. COUNTY ROAD DEPT. OR CALIF. STATE HWY. DEPT. REQUIREMENTS IN ACCORDANCE WITH PERMIT.
 - 5- ENGAGE FOUR FEET OF SEWER AT POINTS OF INTERFERENCE WITH POLES, S-2-119.
 - 6- HOUSE LATERALS TO BE CONSTRUCTED WITH INVERTS AT PROPERTY LINE 6 FEET BELOW CURB GRADE, EXCEPT AS NOTED.
 - 7- ALL STRUCTURES SHALL BE BRICK SEWER STRUCTURES, S-2-106, EXCEPT AS NOTED.
 - 8- FOR ALLOWABLE LEAKAGE TEST, USE FORMULA NO. 1, SPEC. SEC. 51.
 - 9- MANHOLE TOPS IN UNIMPROVED RIGHTS-OF-WAY TO BE 6' ABOVE FINISHED GRADE.
- Wire & Tags not required.

SHEET	PAGES
1	1-3
2	4-8
3	9-13

Sealed 4-13-54 McLaughlin

①

**PROFILE, ALIGNMENT AND GRADE OF
SANITARY SEWERS
TO BE CONSTRUCTED IN**

TRACT NO. 18121

P.C. 2768
J.N. F-704
PAGE 1
J.N. 0954.92

(17,876)

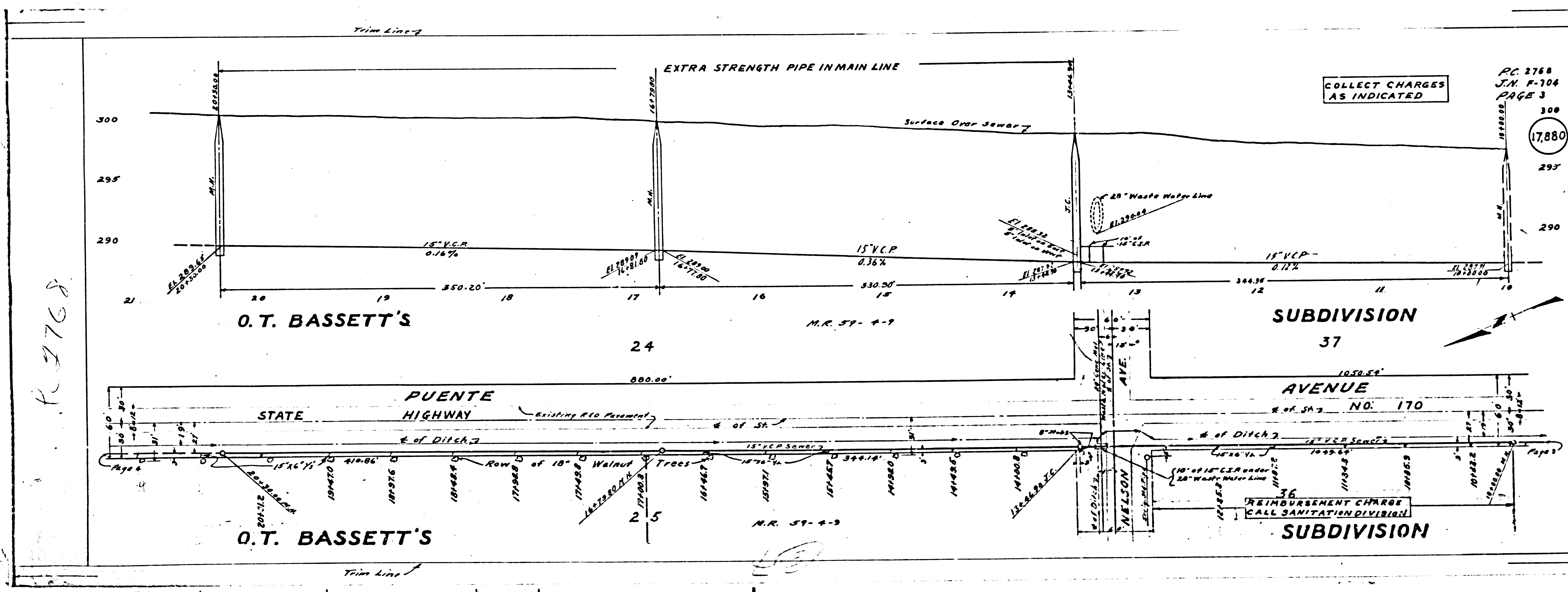
(13)

PRIVATE CONTRACT NO. 2768
W.S. 46
3 SHEETS

VERT. 1"=4'
SCALE: HORIZ. 1"=40'
AUG., 1953
PREPARED IN THE OFFICE OF
HAROLD M. TEGART
BY *Harold M. Tegart* P.E. No. 2151
FOR LEGEND SEE PLAN NO. S-2-64

NOTE:
GRADES TO WHICH THIS IMPROVEMENT IS TO BE CONSTRUCTED ARE SHOWN ON PLANS AND PROFILES. GRADE POINTS FOR TOP OF CURB, CENTER LINE OF STREET OR CENTER LINE OF ALLEY ARE SHOWN BY CIRCLES ON PROFILE. AT ALL POINTS BETWEEN DESIGNATED POINTS THE GRADE SHALL BE ESTABLISHED SO AS TO CONFORM TO A STRAIGHT LINE DRAWN BETWEEN SAID DESIGNATED POINTS. ELEVATIONS ARE IN FEET ABOVE U.S.C. DATUM OR MEAN SEA LEVEL. THIS DRAWING AND THE DATA HEREON ARE HEREBY MADE A PART OF THE SPECIFICATIONS. WORK SHALL BE CONSTRUCTED ACCORDING TO SPECIFICATIONS ON FILE IN THE OFFICE OF THE COUNTY ENGINEER AND SHALL BE PROSECUTED ONLY IN THE PRESENCE OF THE COUNTY ENGINEER.
BEFORE WORK CAN BE STARTED, THE CONTRACTOR MUST OBTAIN A PERMIT TO EXCAVATE IN COUNTY STREETS FROM THE L.A. COUNTY ROAD DEPT., 103 N. 2nd ST. AND MAKE A DEPOSIT WITH THE COUNTY ENGINEER, 33 L.A. COUNTY BLDG., SUFFICIENT TO COVER THE COST OF CONSTRUCTION INSPECTION AND RECORD PLANS.
APPROVAL OF THIS PLAN BY THE COUNTY OF LOS ANGELES DOES NOT CONSTITUTE A REPRESENTATION AS TO THE ACCURACY OF THE LOCATION OF, OR THE EXISTENCE OR NON-EXISTENCE OF, ANY UNDERGROUND UTILITY, PIPE OR STRUCTURE WITHIN THE LIMITS OF THIS PROJECT. (THIS NOTE APPLIES TO ALL SHEETS)
WHERE WORK IS TO BE DONE IN A STATE HIGHWAY, A PERMIT MUST BE OBTAINED FROM THE STATE OF CALIFORNIA DIVISION OF HIGHWAYS, 700 S. SPRING ST. BY THE CONTRACTOR AND PAID HIS FEE AS REQUIRED.

COUNTY OF LOS ANGELES, CALIF.
APPROVED, WILLIAM S. FOX, COUNTY ENGINEER.
APPROVED, A.M. RAWN, CHIEF ENGINEER, SO. SAN. DIST. NO. 15
BY *William S. Fox* CHIEF DEPUTY
BY *A.M. Rawn* ENGINEER
CHECKED BY *Richard E. Kuban* 11-30-53
OFFICE OF COUNTY ENGINEER, 206 S. W. 7th St.



COLLECT CHARGES AS INDICATED

P.C. 2768
J.N. F-704
PAGE 3

17,880

R 2768

O.T. BASSETT'S

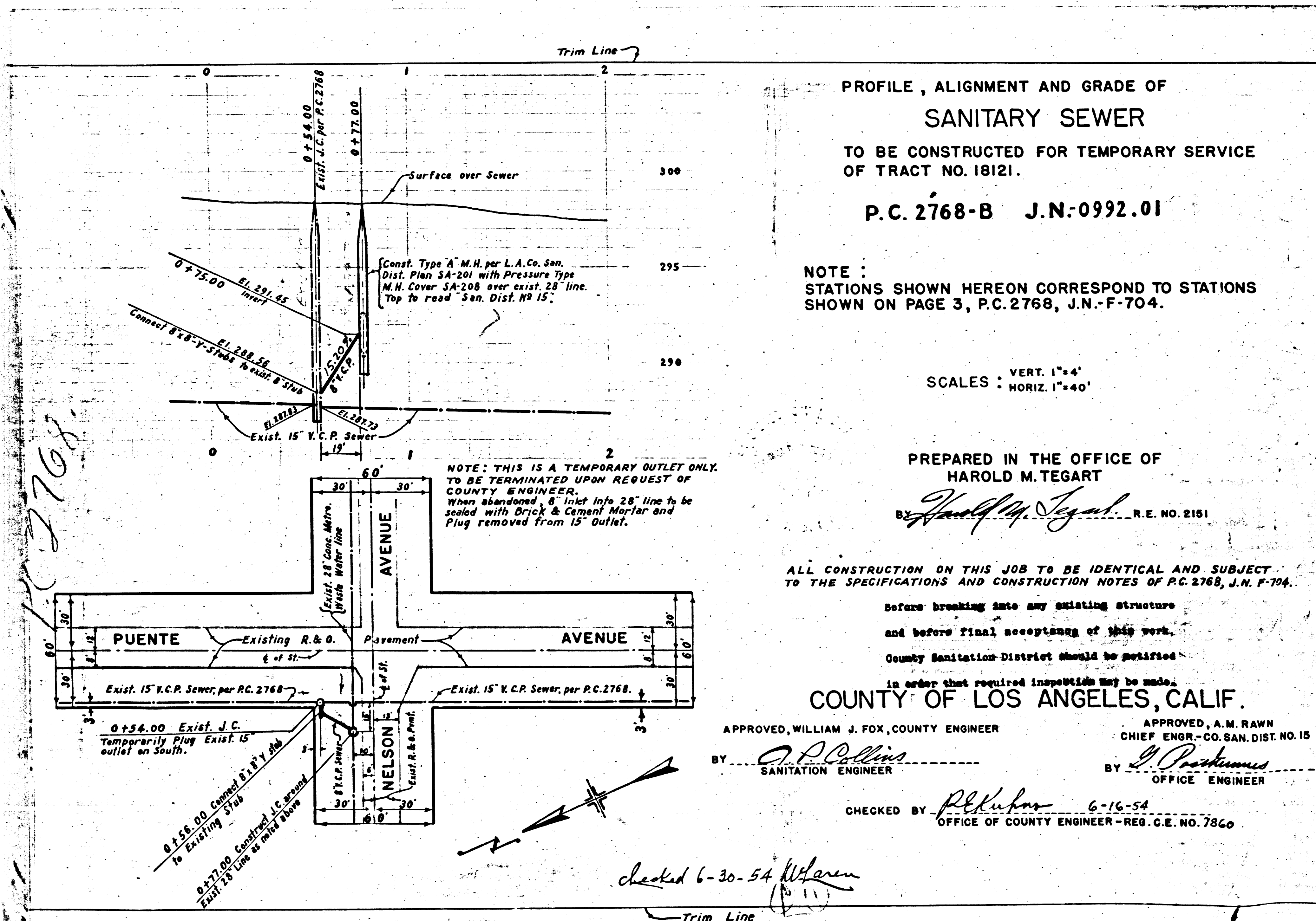
M.R. 59-4-3

SUBDIVISION 37

O.T. BASSETT'S

SUBDIVISION 36

Page 3



PROFILE, ALIGNMENT AND GRADE OF
SANITARY SEWER
 TO BE CONSTRUCTED FOR TEMPORARY SERVICE
 OF TRACT NO. 18121.
P.C. 2768-B J.N.-0992.01

NOTE:
 STATIONS SHOWN HEREON CORRESPOND TO STATIONS
 SHOWN ON PAGE 3, P.C. 2768, J.N.-F-704.

SCALES - VERT. 1"=4'
 HORIZ. 1"=40'

PREPARED IN THE OFFICE OF
HAROLD M. TEGART
 BY *Harold M. Tegart* R.E. NO. 2151

ALL CONSTRUCTION ON THIS JOB TO BE IDENTICAL AND SUBJECT
 TO THE SPECIFICATIONS AND CONSTRUCTION NOTES OF P.C. 2768, J.N. F-704.

Before breaking into any existing structure
 and before final acceptance of this work,
 County Sanitation District should be notified
 in order that required inspections may be made.

COUNTY OF LOS ANGELES, CALIF.
 APPROVED, WILLIAM J. FOX, COUNTY ENGINEER
 BY *W. J. Fox*
 APPROVED, A.M. RAWN
 CHIEF ENGR.-CO. SAN. DIST. NO. 15
 BY *A. M. Rawn*
 OFFICE ENGINEER
 CHECKED BY *W. J. Fox* 6-16-54
 OFFICE OF COUNTY ENGINEER-REG. C.E. NO. 7860

checked 6-30-54
W. J. Fox
 Trim Line