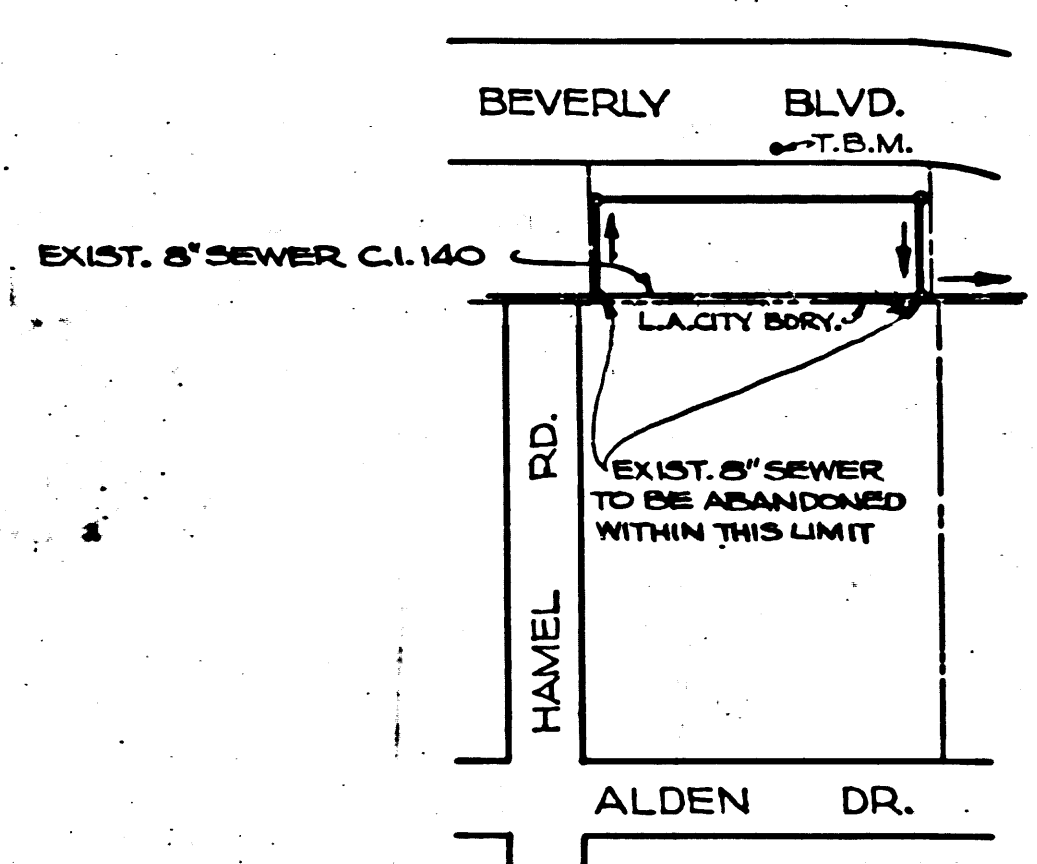


WEST HOLLYWOOD DISTRICT No 9

- NOTE:  
Provide stakes on the property lines or property lines produced at right angles to the sewer line at the center line of each manhole.  
No representative of the County Engineer will survey or layout any portion of the work. The owner or his authorized representative shall furnish the County Engineer with grade sheets and stations for all house laterals and Y branches and shall provide stakes for them at their proper locations with stationing plainly marked. Any change in location shall be requested in writing by the owner or his representative.  
No revisions shall be made in these plans without the approval of the County Engineer.
1. Use standard manhole frames and covers, S-a-117.
  2. Use standard strength pipe except as noted.
  3. Use cement mortar for all vitrified clay pipe joints.
  4. Resurface all trench within paved area to meet L.A. County Road Dept. or Calif. State Highway Dept. requirements in accordance with permit.
  5. Encase four feet of sewer at points of interference with poles, S-a-119.
  6. House laterals to be constructed with inverts at property line ..... feet below curb - grade except as noted.
  7. All structures shall be brick sewer structures, S-a-104.
  8. Manhole tops in unimproved Rights-Of-Way to be 6" above finish grade.
  9. For allowable leakage test, use Formula No. 1, L.A. Specs., Sec. 51.



B.M. CITY ENGR. MON. HOLLY C-34 INTERSECTION  
LA CINENASA BLVD. & BEVERLY BLVD. E.L. 161.907  
T.B.M. 3. E. COR. ELECTRIC IER. POTN. TWO LOT 20  
E.L. 163.81

INDEX MAP  
SCALE 1"=200'  
P.C. 2772  
J.N. F708

SHEET	PAGES
1	1 - 2

TRIM LINE

TRIM LINE

PROFILE, ALIGNMENT AND GRADE OF  
SANITARY SEWERS  
TO BE CONSTRUCTED IN  
MOUNT SINAI HOSPITAL  
SEWER RECONSTRUCTION

PRIVATE CONTRACT NO. 2772  
W.S. 22  
SHEET 1 OF 1 SHEETS

Scale: VERT. 1"=4'  
HORIZ. 1"=40'  
AUGUST, 1955  
PREPARED IN THE OFFICES OF  
WELTON BECKETT AND ASSOCIATES  
By R. P. Bradshaw Reg. C. E. No. 6589  
FOR LEGEND SEE PLAN NO. S-a-64

P.C. 2772  
J.N. F708  
PAGE 1

17,196

NOTE:  
Grades to which this improvement is to be constructed are shown on plans and profiles. Grade points for top of curbs, center line of streets, or center line of alleys are shown by circles on profiles. At all points between designated points the grade shall be established so as to conform to a straight line drawn between said designated points.  
Elevations are in feet above U.S.G.S. datum or mean sea level.  
This drawing and the data hereon are hereby made a part of the specifications.  
Work shall be constructed according to specifications on file in the office of the County Engineer and shall be prosecuted only in the presence of the County Engineer.  
Before work can be started, the contractor must obtain a permit to excavate in County streets from the L.A. County Road Dept., 108 W. 2nd St. and make a deposit with the County Engineer, 733 L.A. County Engineering Building, sufficient to cover the cost of construction inspection and record plans.  
Approval of this plan by the County of Los Angeles does not constitute a representation as to the accuracy of the location of or the existence or non-existence of any underground utility, pipe, or structure within the limits of this project. This note applies to all sheets.  
If work is to be done in a State Highway, a permit must be obtained from the State of California, Division of Highways, 120 South Spring Street.

COUNTY OF LOS ANGELES, CALIFORNIA  
Approved, William J. Fox, County Engineer  
Approved, A. M. Rawm  
Chief Engr. of San. Dist. No. 4  
Checked By: A. H. Sweeney 7-31-55  
Office of County Engineer, Reg. C. E. No. 6716

RECEIVED  
AUG 10 1955  
COUNTY ENGINEER  
S. G. L. 1955

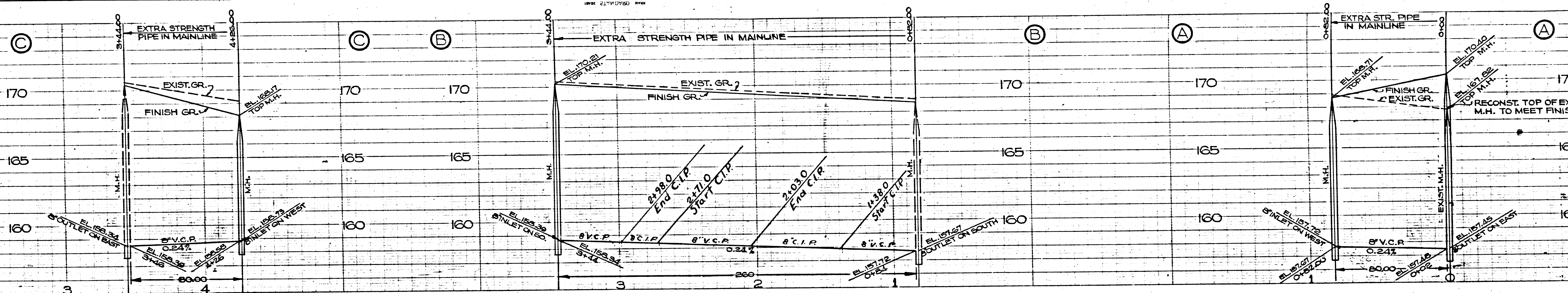
R.S.

Checked 10-13-53 W. J. Fox

P.C. 2772  
 J.N. F708  
 AUGUST 1955  
 SHEET 1 OF 1 SHEETS  
 WELTON BECKETT AND ASSOCIATES  
 R. P. Bradshaw  
 REG. C. E. NO. 6589  
 FOR LEGEND SEE PLAN NO. S-a-64

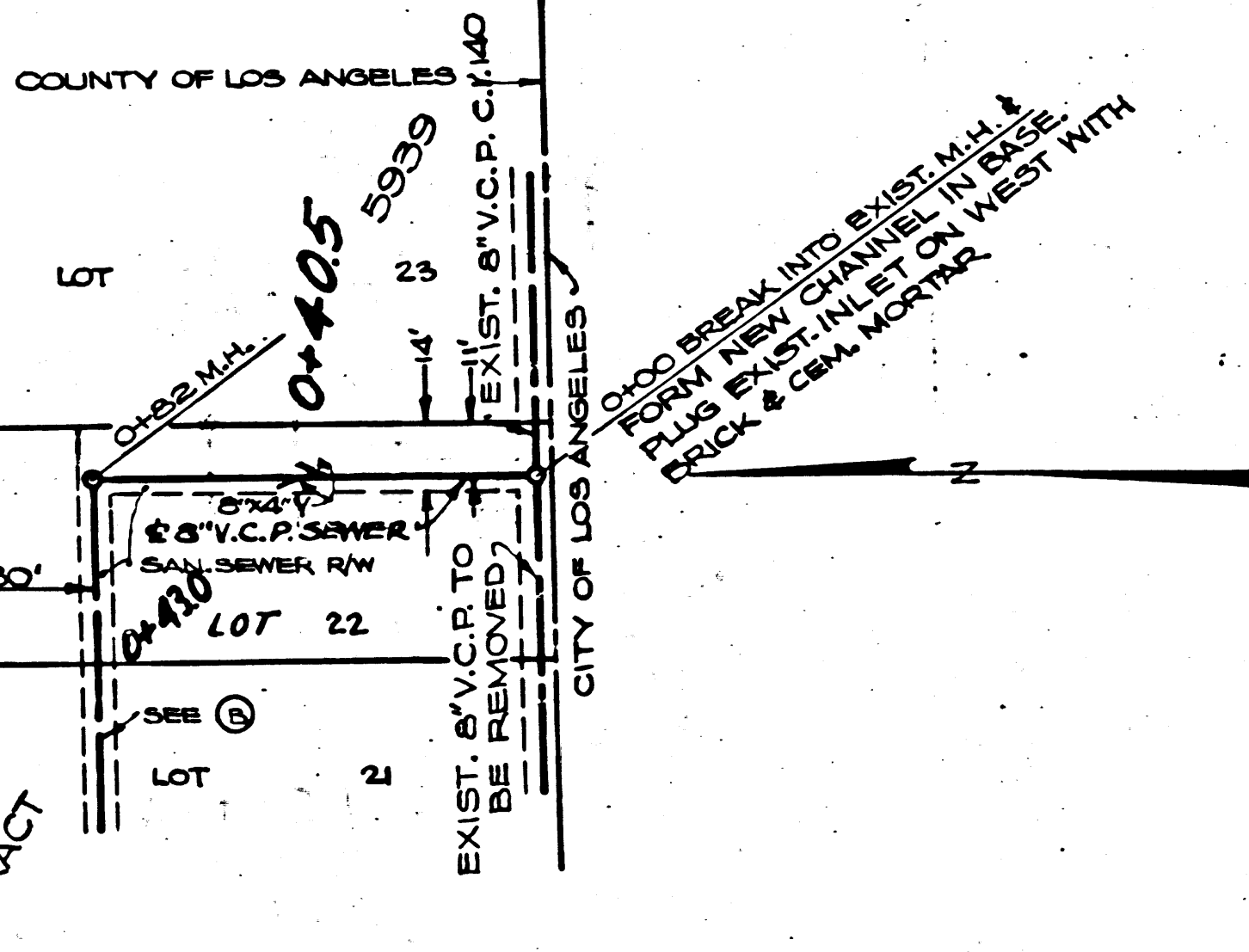
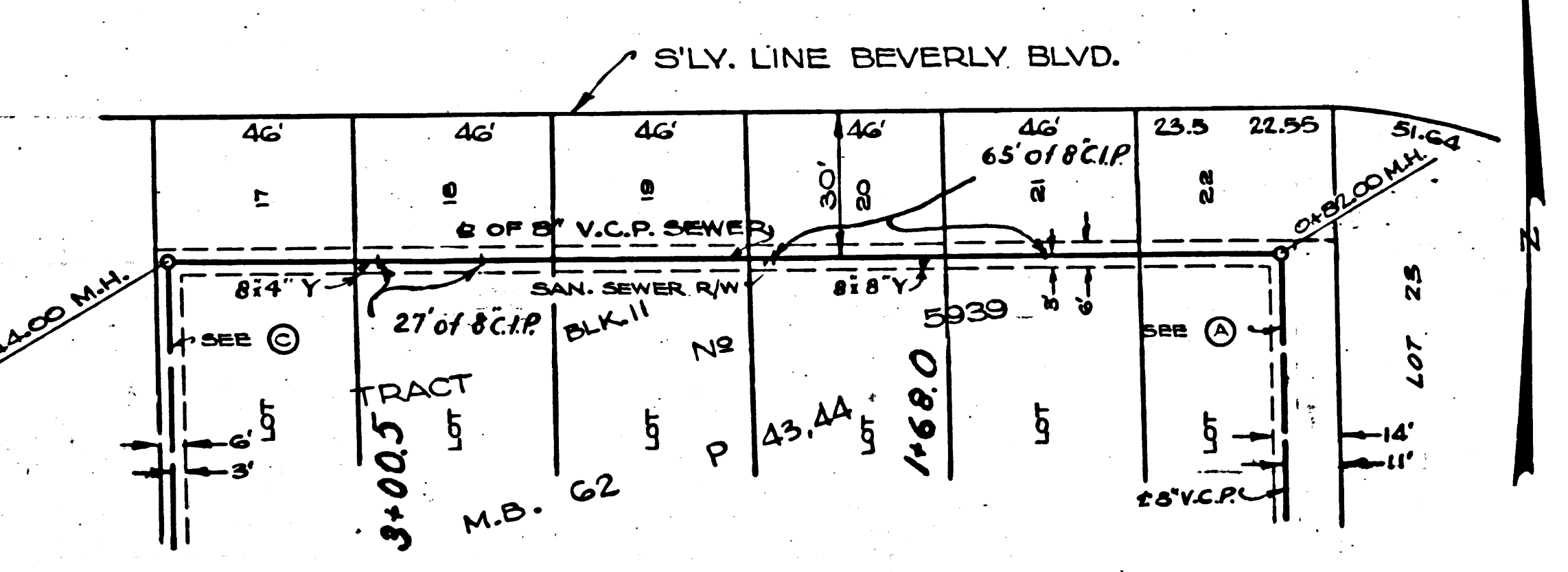
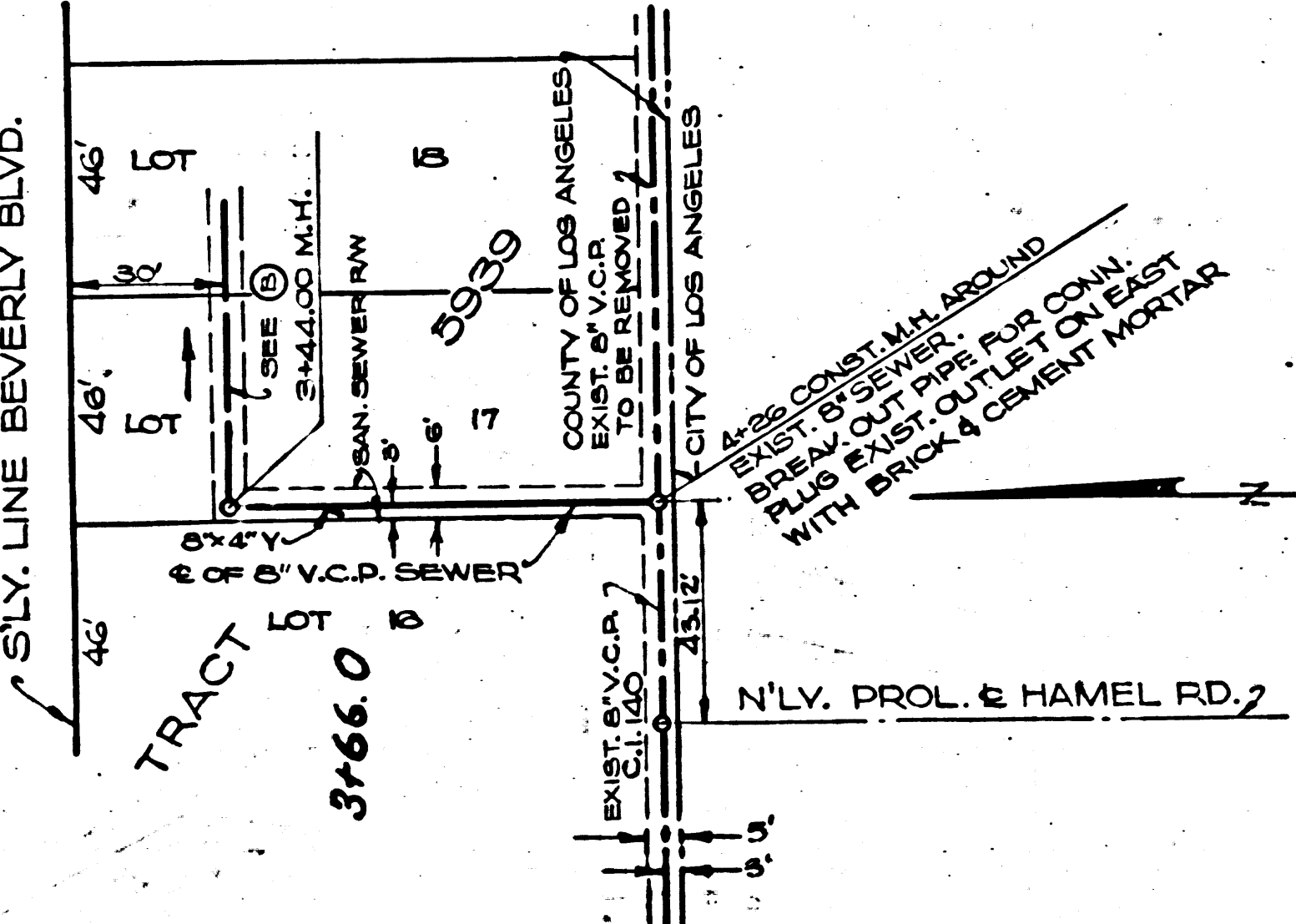


PC. 2772



P.C. 2772  
J.N. F708  
PAGE 2

17.197



(1)