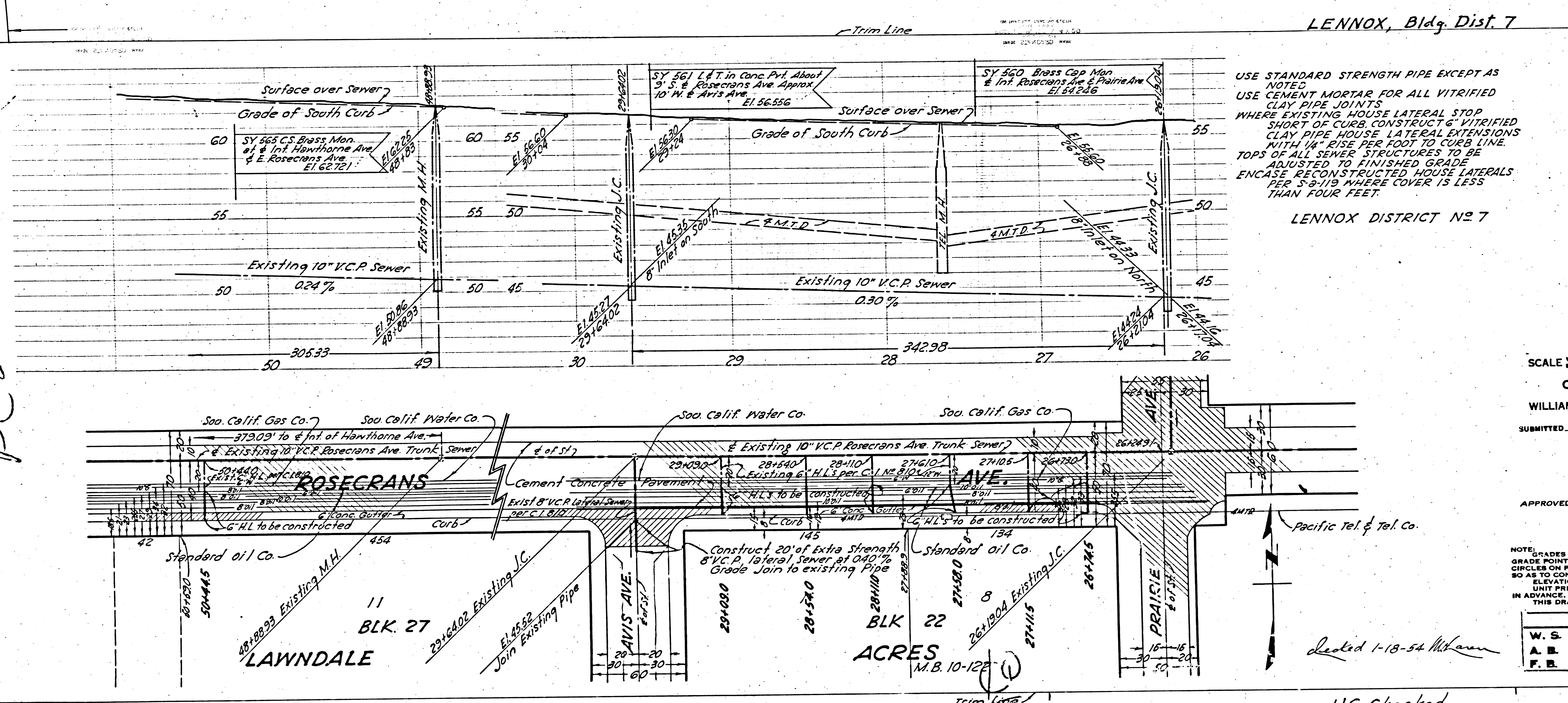


ROSECRANS AVE.  
 305-A-306  
 1895-7  
 2189-306A  
 2189-306B



P.C. 2775 - J.N. A-306  
 (1 page)  
**CASH CONTRACT NO. 30681**  
 PROFILE, ALIGNMENT AND GRADE OF  
**SANITARY SEWERS**  
 TO BE CONSTRUCTED IN  
**ROSECRANS AVENUE**  
**AND OTHER RIGHTS OF WAY**  
 PRIVATE CONTRACT NO. 2775  
 JOB NO. A306  
 PLAN NO. 2  
 ONE SHEET

SCALE VERT. 1" = 10'  
 HORIZONTAL 1" = 20'  
 AUGUST 1953  
 COUNTY OF LOS ANGELES, CALIFORNIA.  
 WILLIAM J. FOX COUNTY ENGINEER  
 SUBMITTED *A.P. Collins* SANITATION ENGINEER  
 APPROVED *A.H. Gregory* CHIEF DEPUTY  
 APPROVED *A.M. RAWN* CHIEF ENGINEER OF COUNTY SANITATION DISTRICT NO. 5  
 APPROVED *Sam Kennedy* ROAD COMMISSIONER BY *J. B. ...* OFFICE ENGINEER

FOR LEGEND  
 GRADES TO WHICH THIS IMPROVEMENT IS TO BE CONSTRUCTED ARE SHOWN ON PLANS AND PROFILES. GRADE POINTS FOR TOP OF CURB, CENTER LINE OF STREET OR CENTER LINE OF ALLEY ARE SHOWN BY CIRCLES ON PROFILES. AT ALL POINTS BETWEEN DESIGNATED POINTS THE GRADE SHALL BE ESTABLISHED SO AS TO CONFORM TO A STRAIGHT LINE DRAWN BETWEEN SAID DESIGNATED POINTS.  
 ELEVATIONS ARE IN FEET ABOVE U. S. S. DATUM OR MEAN SEA LEVEL.  
 UNIT PRICES FOR ADDITIONAL WORK WHICH MAY BE REQUIRED BUT WHICH CANNOT BE ASCERTAINED IN ADVANCE, SHALL BE SUBMITTED IN THE PROPOSAL.  
 THIS DRAWING AND THE DATA HEREON ARE HEREBY MADE A PART OF THE SPECIFICATIONS.

REFERENCES			
W. S.	DESIGNED	HENRY LEE	AUG 1953
A. B.	TRACED	HENRY LEE	AUG 1953
F. B.	CHECKED	W.F. BRUMER	AUG 1953

UG. Checked  
 J.P.W. 8-11-53

ROSECRANS AVE.  
 CASH CONTRACT NO. 30681  
 J.N. A-306