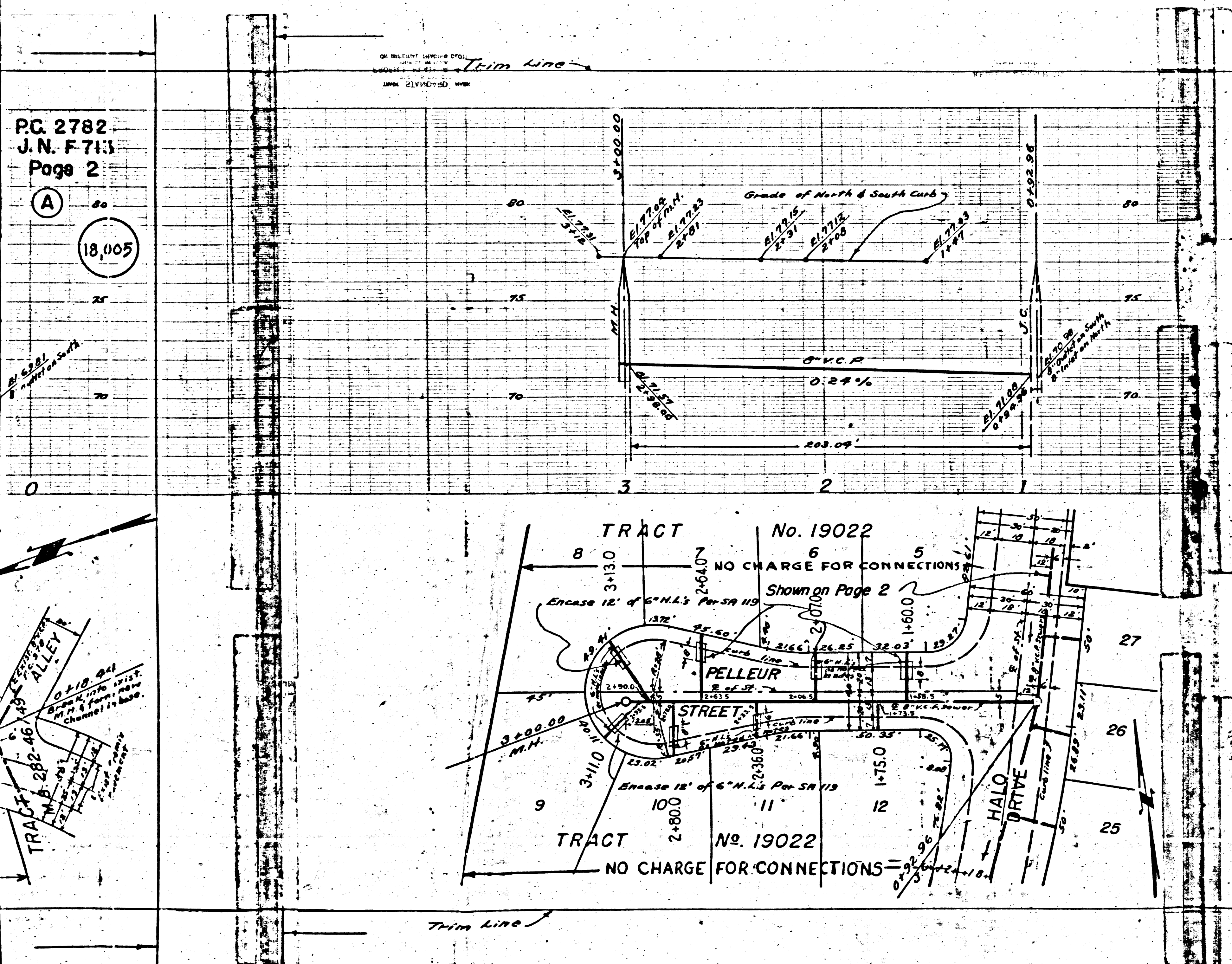


PC 2782
J.N. F 713
Page 2

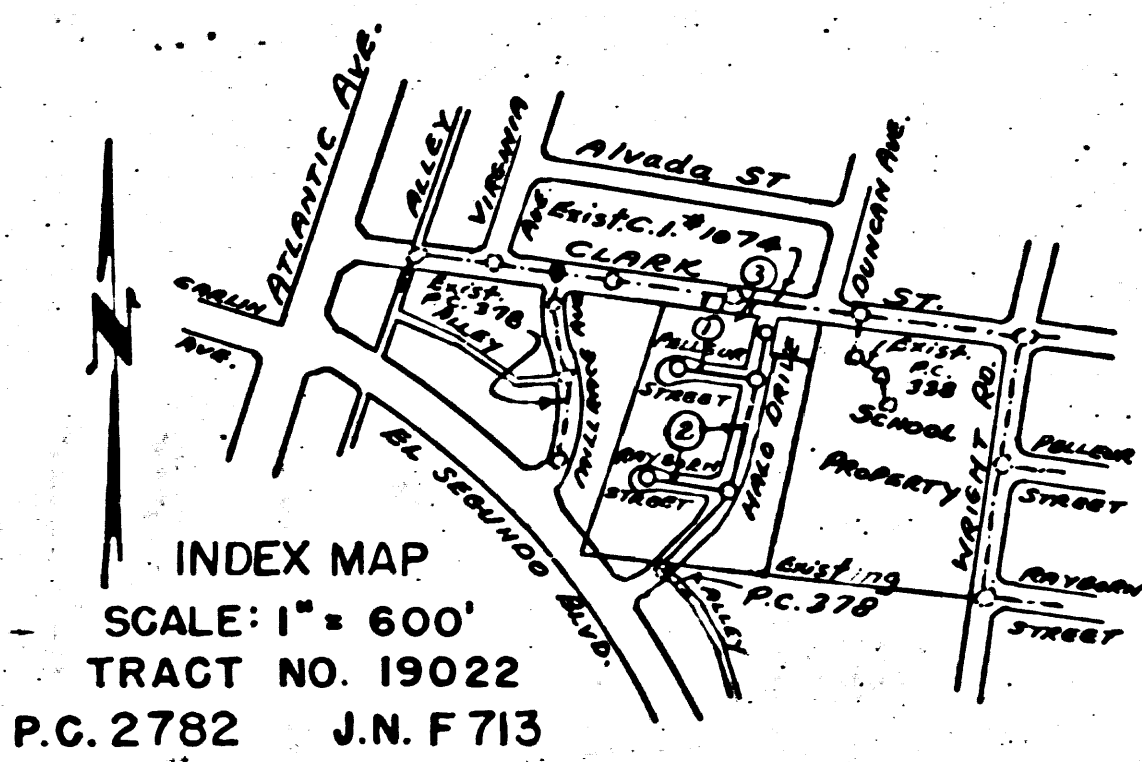
(A) 18,005



FLORENCE BUILDING DIST. NO 1

- NOTE:**
Provide stakes on the property lines or property lines produced at right angles to the sewer line at the center line of each manhole.
No representative of the County Engineer will survey or layout any portion of the work. The owner or his authorized representative shall furnish the County Engineer with grade sheets and stations for all house laterals and Y branches and shall provide stakes for them at their proper locations with stationing plainly marked. Any change in location shall be requested in writing by the owner or his representative.
No revisions shall be made in these plans without the approval of the County Engineer.
1. Use standard manhole frames and covers, S-a-117.
 2. Use standard strength pipe except as noted.
 3. Use cement mortar for all vitrified clay pipe joints.
 4. Resurface all trench within paved area to meet L.A. County Road Dept. or Calif. State Highway Dept. requirements in accordance with permit.
 5. Encase four feet of sewer at points of interference with poles, S-a-119.
 6. Y's to be laid horizontal and house laterals to be laid with 1/4" rise per foot to property line.
Except as Noted
 7. All structures shall be brick sewer structures, S-a-104.
 8. Manhole tops in unimproved Rights-Of-Way to be 6" above finish grade.
 9. For allowable leakage test, use Formula No. 1, Specs., Sec. 51.
Wire & Tags not required.

BENCH MARK: SY 309 Lead & tack in North curb of Rosecrans Avenue 25' West of curb return Northwest corner of Gibson. ELEV. 72.980



COLLECT CHARGES AS INDICATED

SHEET No.	PAGES
1	1 - 3

Approved, William J. Fox, County Engineer
Approved, A. M. Rawn, CHIEF ENGR. OF SAN. DIST. NO. 1

Checked By: *[Signature]* Office Engineer
Checked By: *[Signature]* Office Engineer

Office of County Engineer, Box C. E. No. 2860

PROFILE, ALIGNMENT AND GRADE OF
SANITARY SEWERS
TO BE CONSTRUCTED IN
TRACT No. 19022
PRIVATE CONTRACT NO. 2782
W. S. 32
SHEET 1 OF 1 SHEET
Scale: VERT. 1" = 4'
HORIZ. 1" = 40'
July 1953
PREPARED IN THE OFFICES OF GLEN ROOD
[Signature]
FOR LEGEND SEE PLAN NO. S-a-64

NOTE:
Grades to which this improvement is to be constructed are shown on plans and profiles. Grade points for top of curbs, center line of streets, or center line of alleys are shown by circles on profiles. At all points between designated points the grade shall be established so as to conform to a straight line drawn between said designated points.
Elevations are in feet above U.S.G.S. datum or mean sea level.
This drawing and the data hereon are hereby made a part of the specifications.
Work shall be constructed according to specifications on file in the office of the County Engineer and shall be prosecuted only in the presence of the County Engineer.
Before work can be started, the contractor must obtain a permit to excavate in County streets from the L.A. County Road Dept., 108 W. 2nd St. and make a deposit with the County Engineer, 733 L.A. County Engineering Building, sufficient to cover the cost of construction inspection and record plans.
Approval of this plan by the County of Los Angeles does not constitute a representation as to the accuracy of the location of or the existence or non-existence of any underground utility, pipe, or structure within the limits of this project. This note applies to all sheets.
If work is to be done in a State Highway, a permit must be obtained from the State of California, Division of Highways, 120 South Spring Street.

PC 2782
J.N. F 713
Page 1
J.N. 0953.92

18,004

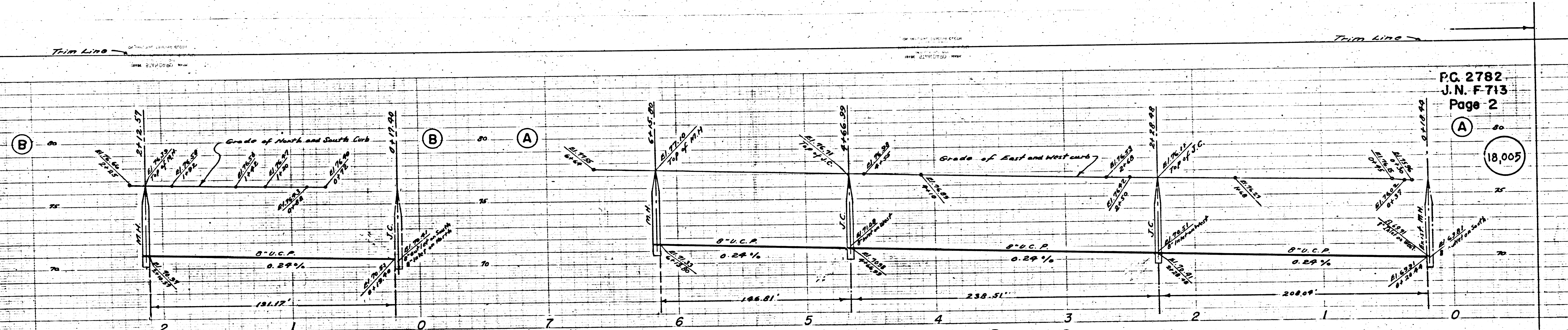
TRACT NO. 19022

PC 2782
SHEET NO. 1

R.L.

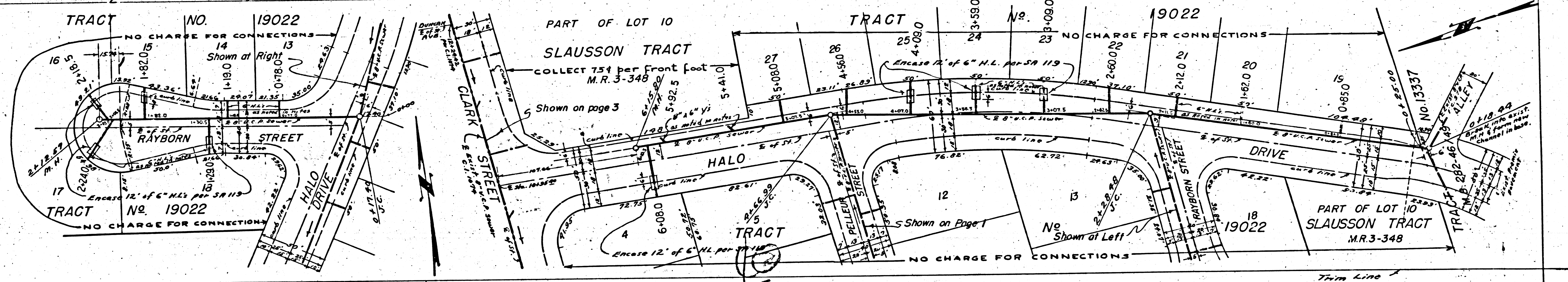
2
3
3

18,006



P.C. 2782
J.N. F-713
Page 2

18,005



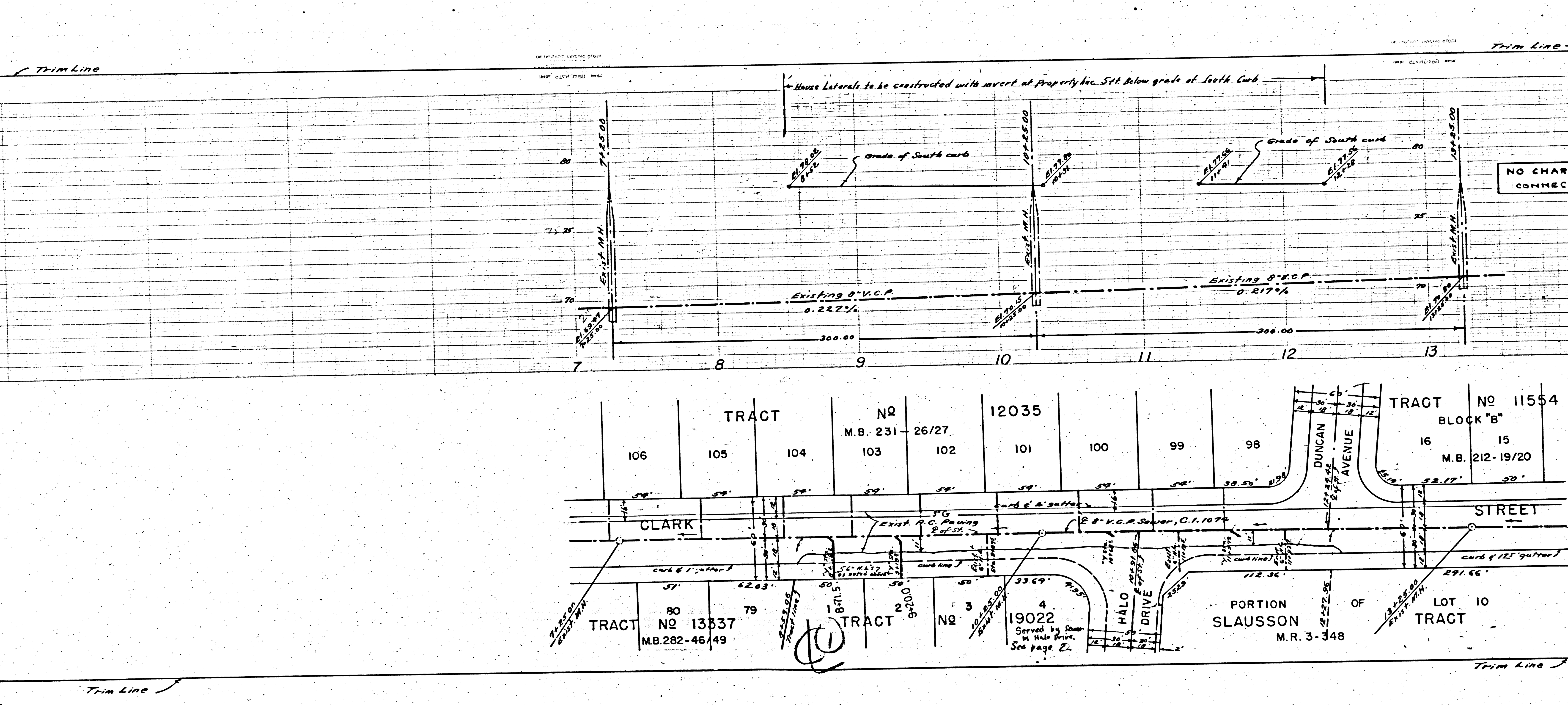
Trim Line

Trim Line

P.C. 2782
E.T.M.J.

TRACT NO. 19022

PC 2782



P.C. 2782
J.N.F.713
Page 3

NO CHARGE FOR CONNECTIONS

18,000