

GE 2  
C. 2821  
L. 09626

610

7-28-54  
DICKY ST  
12'

B.M. SY 1228, El. 197.307  
L.F.T. in center of conc. headwall,  
So. end of drain pipe, ± 55' N.W. of  
E. of Santa Fe St., ± 18' W. of  
E. of Colima Road.

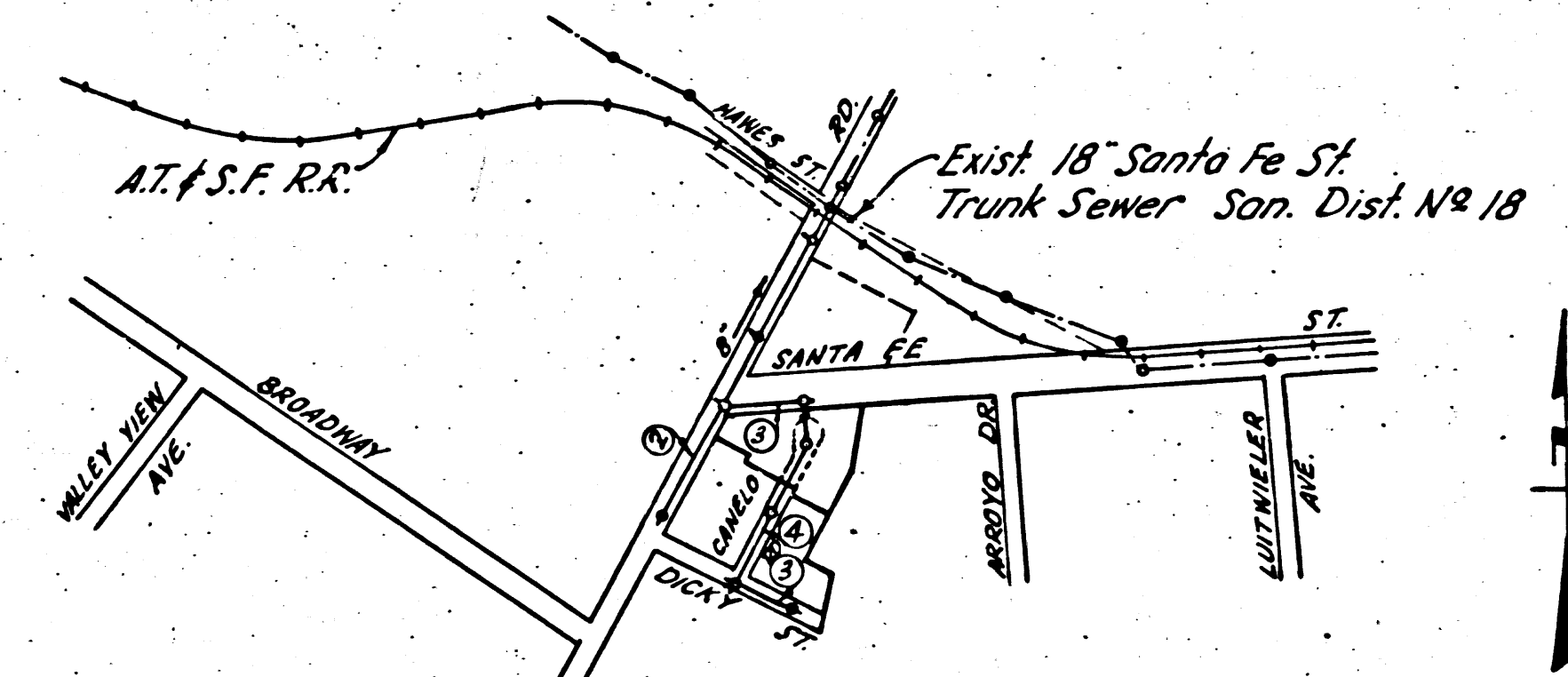
SHEET	PAGES
1	1-4

Before breaking into any existing structure  
and before final acceptance of this work,  
County Sanitation District should be notified  
in order that required inspection may be made.

Checked 7-27-54 *W. J. Fox*

### WHITTIER BLDG. DIST. NO 11

- NOTE:  
Provide stakes on the property lines or property lines produced at right angles to the sewer line at the center line of each manhole.  
No representative of the County Engineer will survey or layout any portion of the work. The owner or his authorized representative shall furnish the County Engineer with grade sheets and stations for all house laterals and Y branches and shall provide stakes for them at their proper locations with stationing plainly marked. Any change in location shall be requested in writing by the owner or his representative.  
No revisions shall be made in these plans without the approval of the County Engineer.
1. Use standard manhole frames and covers, S-a-117.
  2. Use standard strength pipe except as noted.
  3. Use cement mortar for all vitrified clay pipe joints.
  4. Resurface all trench within paved area to meet L.A. County Road Dept. or Calif. State Highway Dept. requirements in accordance with permit.
  5. Encase four feet of sewer at joints of interference with poles, S-a-119.
  6. House laterals to be constructed with inverts at property line.....feet below curb grade
  7. All structures shall be brick sewer structures, S-a-104, *except as noted.*
  8. Manhole tops in unimproved Rights-Of-Way to be 6" above finish grade.
  9. For allowable leakage test, use Formula No....., Spec's., Sec. 51.



INDEX MAP  
TRACT NO 19804  
SCALE 1"=600'  
P.C. 2821 J.N. 0962.61

CONNECTION CHARGES  
AS INDICATED  
L.S. 5-29-54

PROFILE, ALIGNMENT AND GRADE OF  
SANITARY SEWERS  
TO BE CONSTRUCTED IN  
**TRACT NO 19804**

PRIVATE CONTRACT NO. 2821  
W. S. 34  
SHEET 1 OF 1 SHEET  
Scale: VERT. 1"=4'  
HORIZ. 1"=40'  
SEPTEMBER 1953  
PREPARED IN THE OFFICES OF  
**BARCLAY SURVEYING COMPANY**  
By *W. J. Fox* Reg. C. E. No. 1137  
FOR LEGEND SEE PLAN NO. S-a-64

PAGE 1  
P.C. 2821  
J.N. 0962.61  
DOUBLE SCALE

18,609

(4)

NOTE:  
Grades to which this improvement is to be constructed are shown on plans and profiles. Grade points for top of curbs, center line of streets, or center line of alleys are shown by circles on profiles. At all points between designated points the grade shall be established so as to conform to a straight line drawn between said designated points.  
Elevations are in feet above U.S.G.S. datum or mean sea level.  
This drawing and the data hereon are hereby made a part of the specifications.  
Work shall be constructed according to specifications on file in the office of the County Engineer and shall be prosecuted only in the presence of the County Engineer.  
Before work can be started, the contractor must obtain a permit to excavate in County streets from the L.A. County Road Dept., 108 W. 2nd St. and make a deposit with the County Engineer, 733 L.A. County Engineering Building, sufficient to cover the cost of construction inspection and record plans.  
Approval of this plan by the County of Los Angeles does not constitute a representation as to the accuracy of the location of or the existence or non-existence of any underground utility, pipe, or structure within the limits of this project. This note applies to all sheets.  
If work is to be done in a State Highway, a permit must be obtained from the State of California, Division of Highways, 120 South Spring Street.

COUNTY OF LOS ANGELES, CALIFORNIA  
Approved, William J. Fox, County Engineer  
Approved, A. M. Rawns  
CHIEF ENGR. P.C. SAN. DIST. NO. 11  
By *W. J. Fox* Sanitation Engineer  
Checked By: *Arthur J. Rawns* Office Engineer  
Office of County Engineer, Reg. C. E. No. 8805

Rd.

P.C. 2821

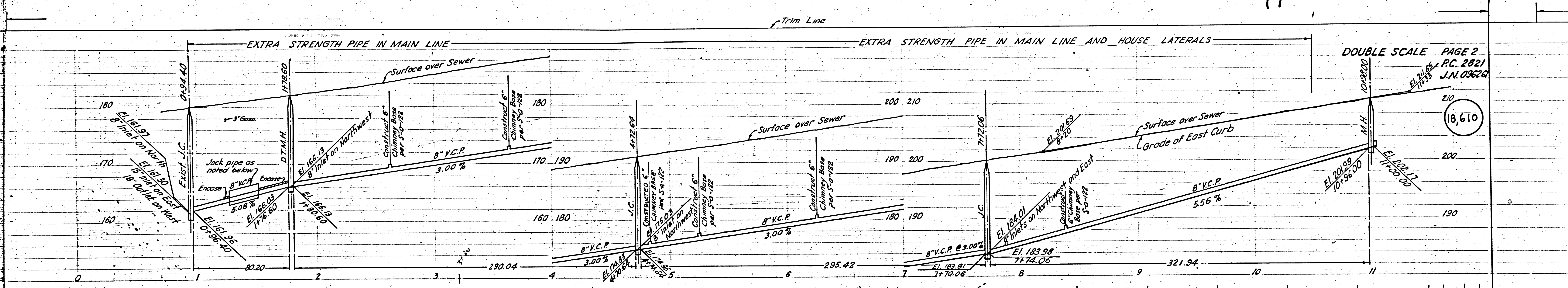
TRACT NO 19804

P.C. 2821



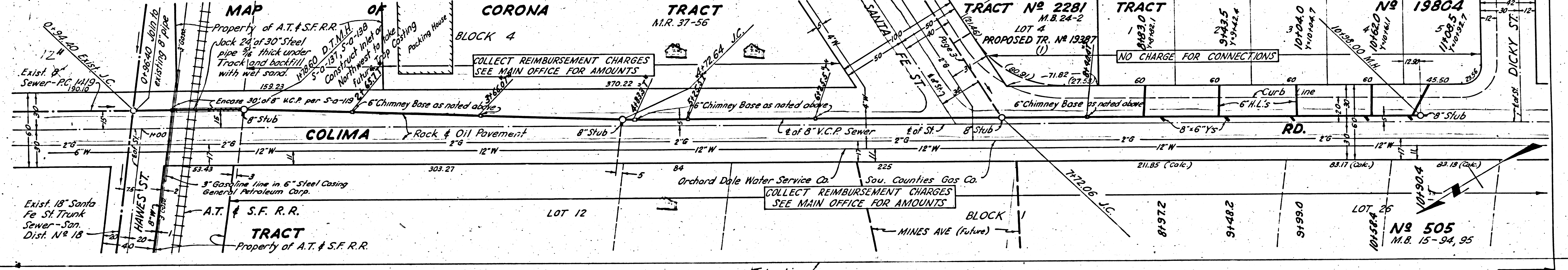
A F.C. 2821  
J.N. 096261  
PAGE 3  
DOUBLE SCALE

18,611



DOUBLE SCALE PAGE 2  
F.C. 2821  
J.N. 096261

18,610

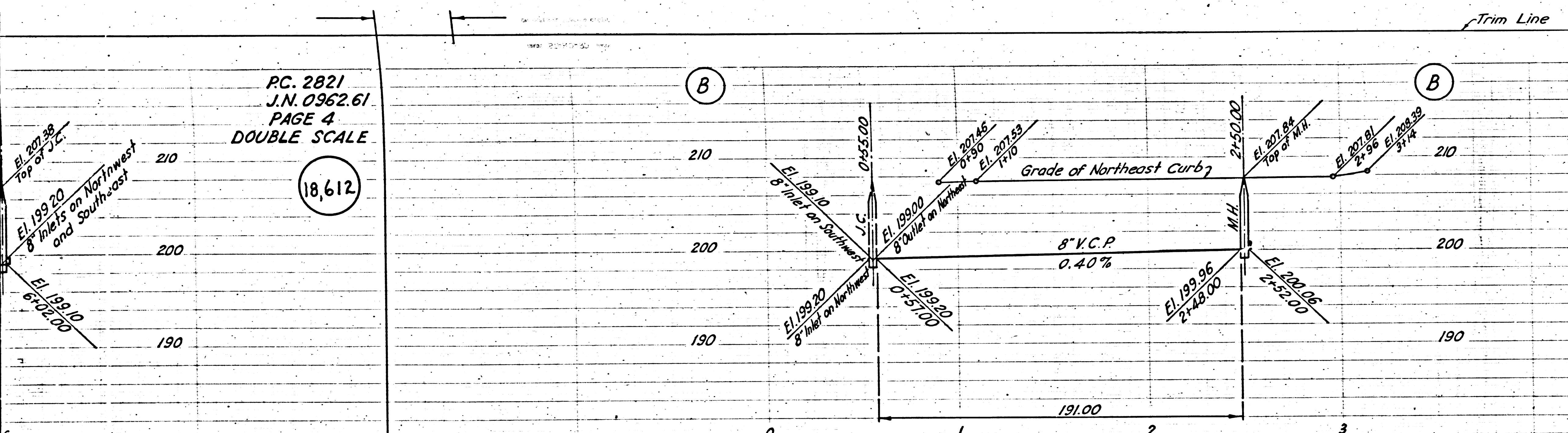


81  
24-2



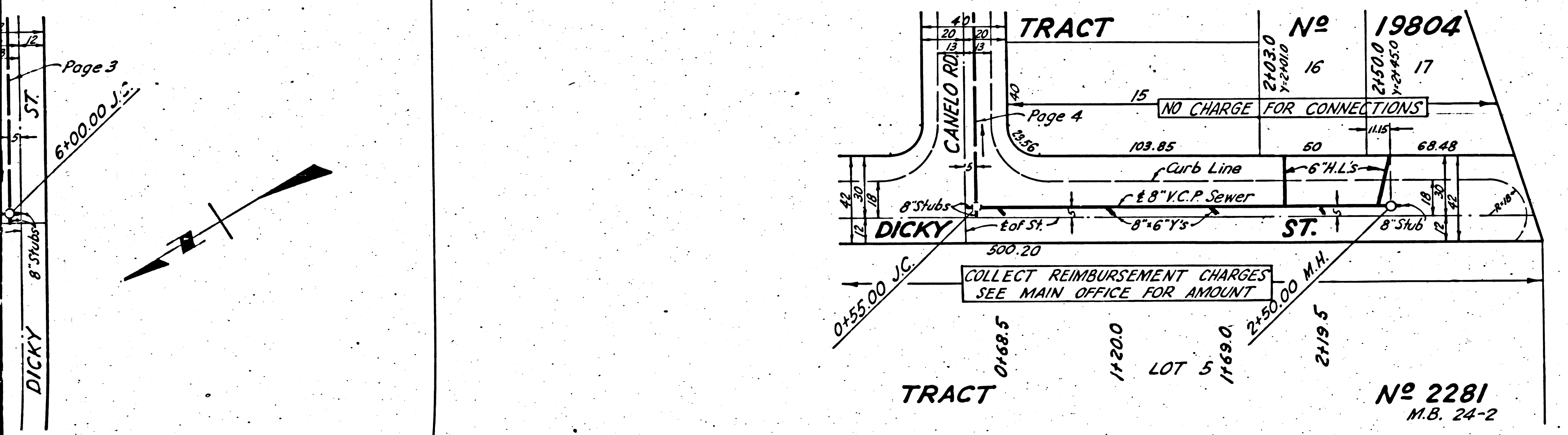
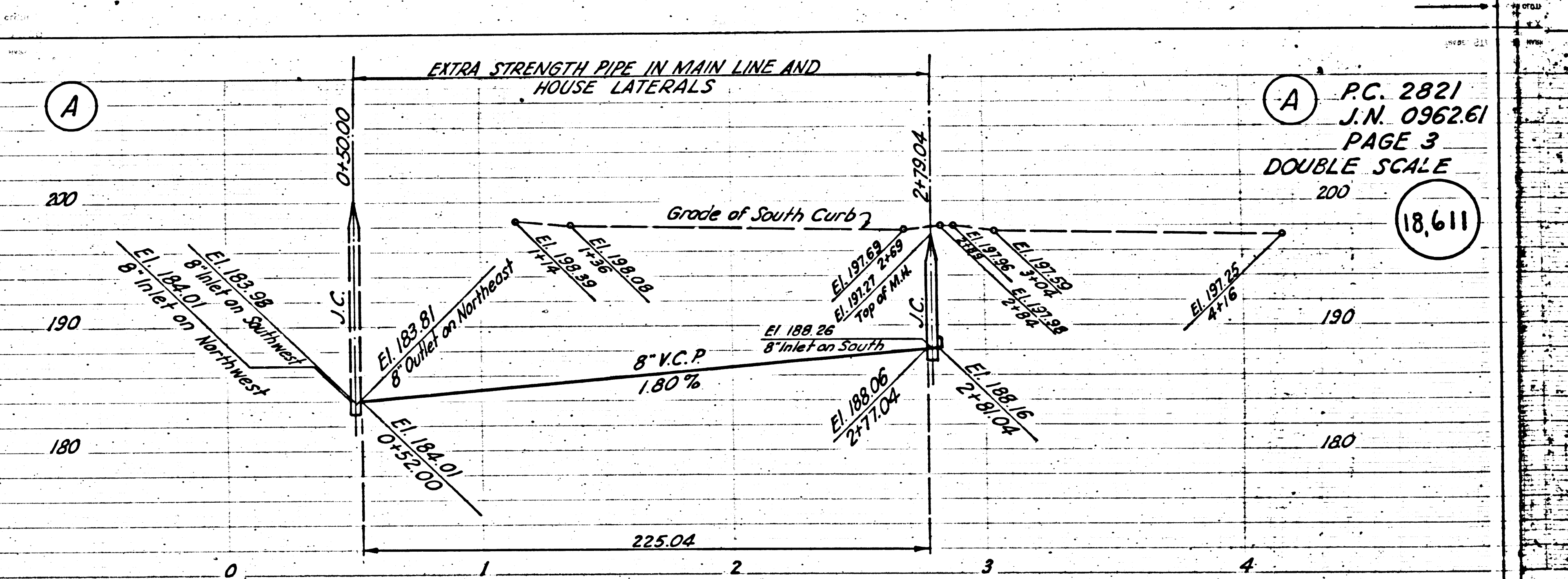
PC. 2821  
J.N. 0962.61  
PAGE 4  
DOUBLE SCALE

18,612

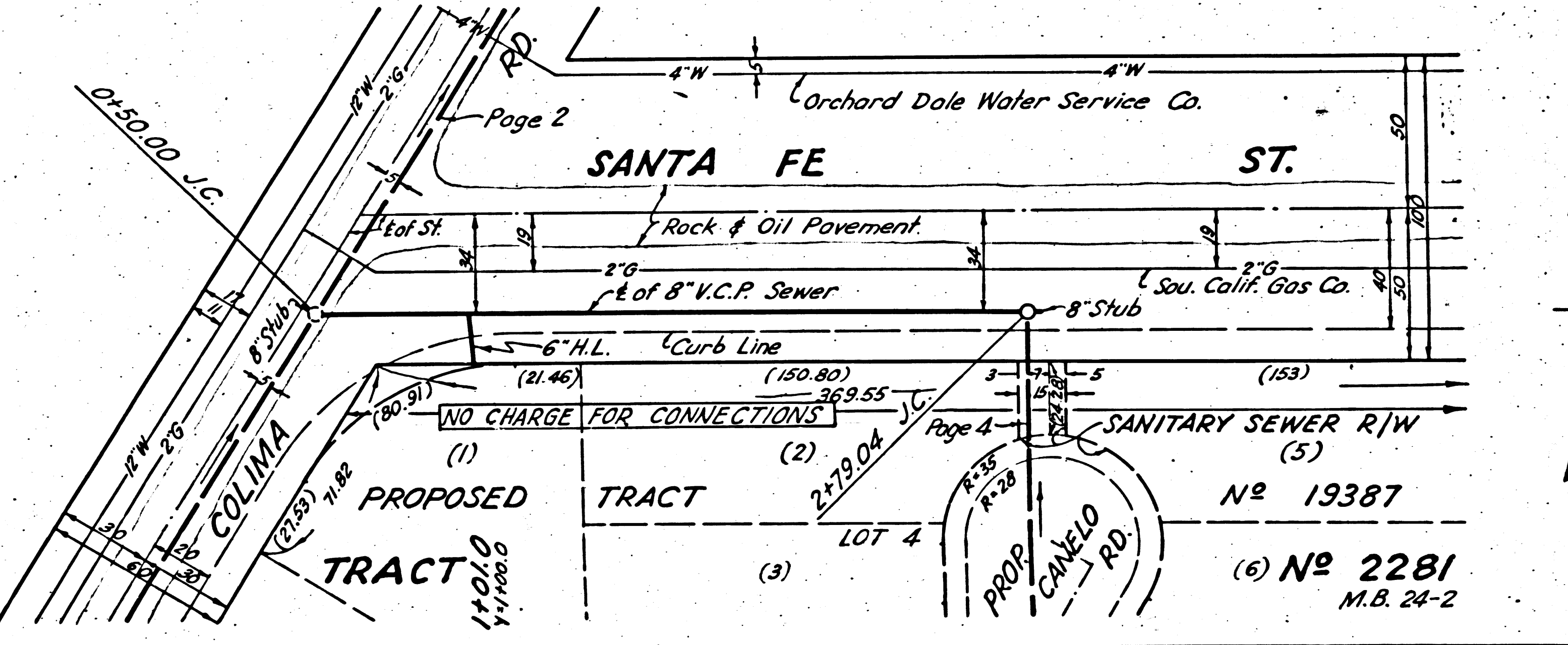


PC. 2821  
J.N. 0962.61  
PAGE 3  
DOUBLE SCALE

18,611

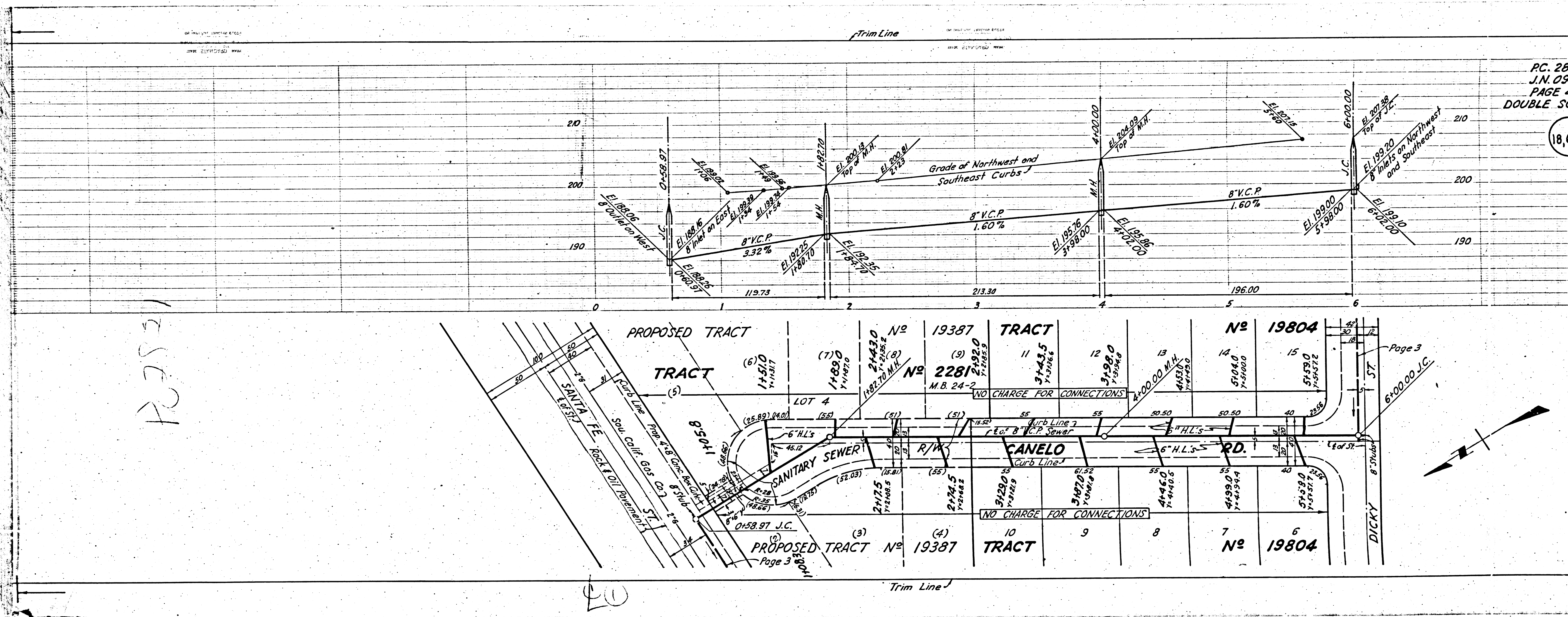


TRACT No. 2281  
M.B. 24-2



TRACT No. 2281  
M.B. 24-2





PC. 28  
J.N. 096  
PAGE 4  
DOUBLE SC

18.6

Page 3

Page 3

127521

20