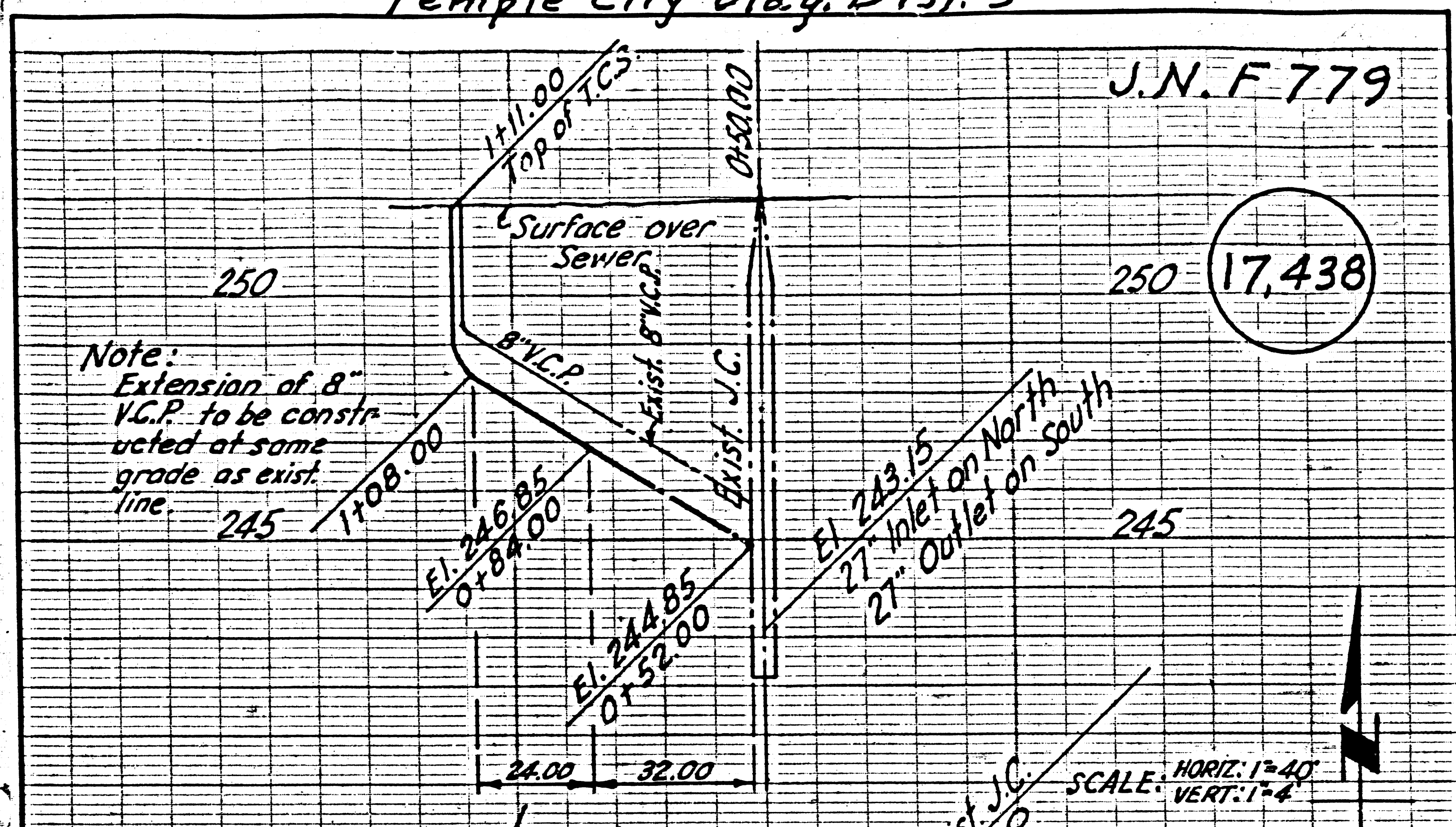
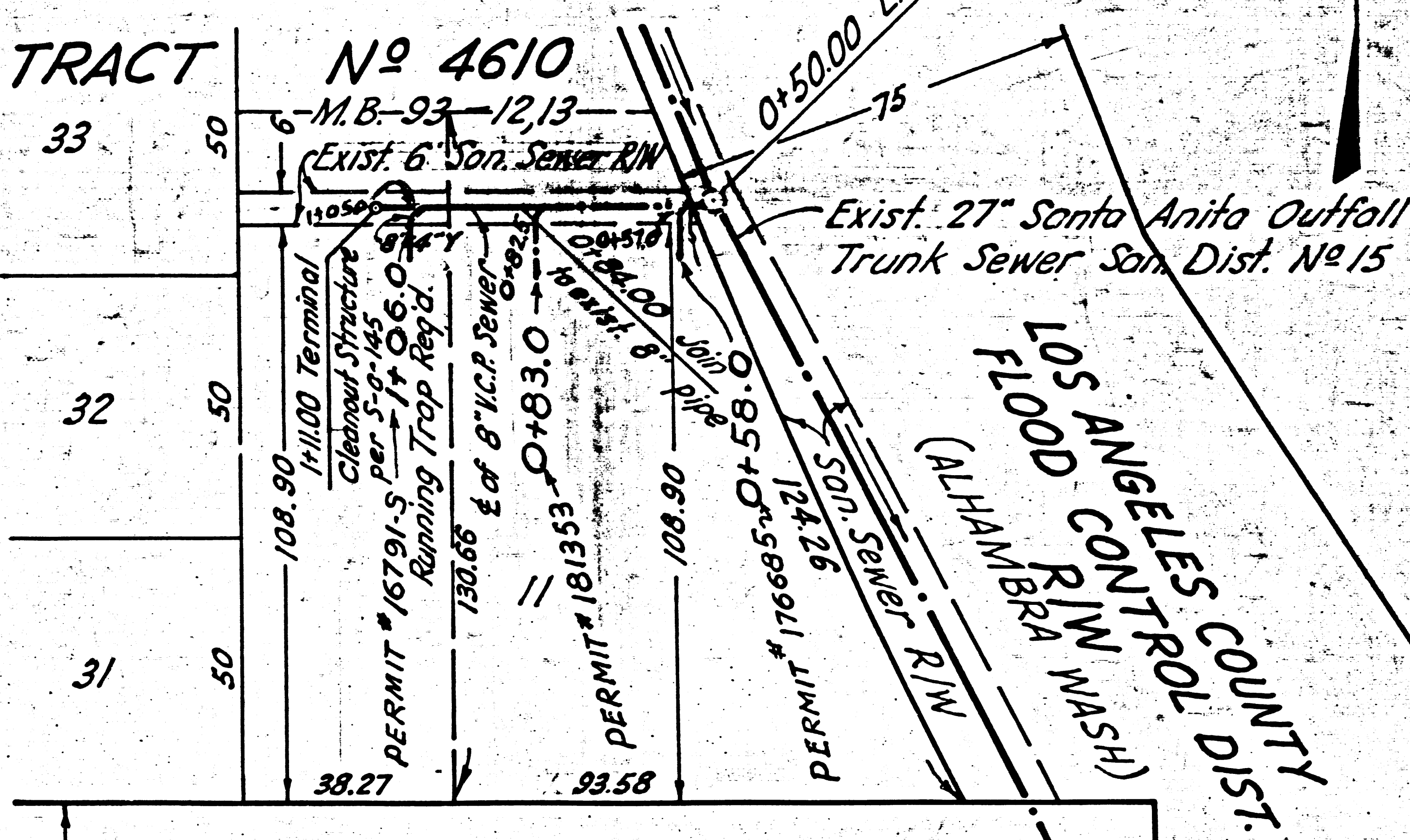


Temple City Bldg. Dist. 5



P.C. 2825



KLINGERMAN ST.

P.C. 2825 J.N. F-779

NOTE:
 WORK SHALL BE CONSTRUCTED IN ACCORDANCE WITH SPECIFICATIONS ON FILE IN THE OFFICE OF THE COUNTY ENGINEER AND SHALL BE PROSECUTED ONLY IN THE PRESENCE OF THE COUNTY ENGINEER OR HIS REPRESENTATIVE.

NAME OF PROPERTY OWNER REQUESTING SEWER CONSTRUCTION
 J. S. FAULKNER

APPROVED: *H. L. Smelton* (10-13-53)
 OFFICE OF COUNTY ENGINEER REG. C.E. No. 6412

SEPTEMBER 1953

checked 12-16-53 *W. L. ...*
 B&S permit

B.S. 1508 (11-27-53) Temple City Bldg. Dist. 5