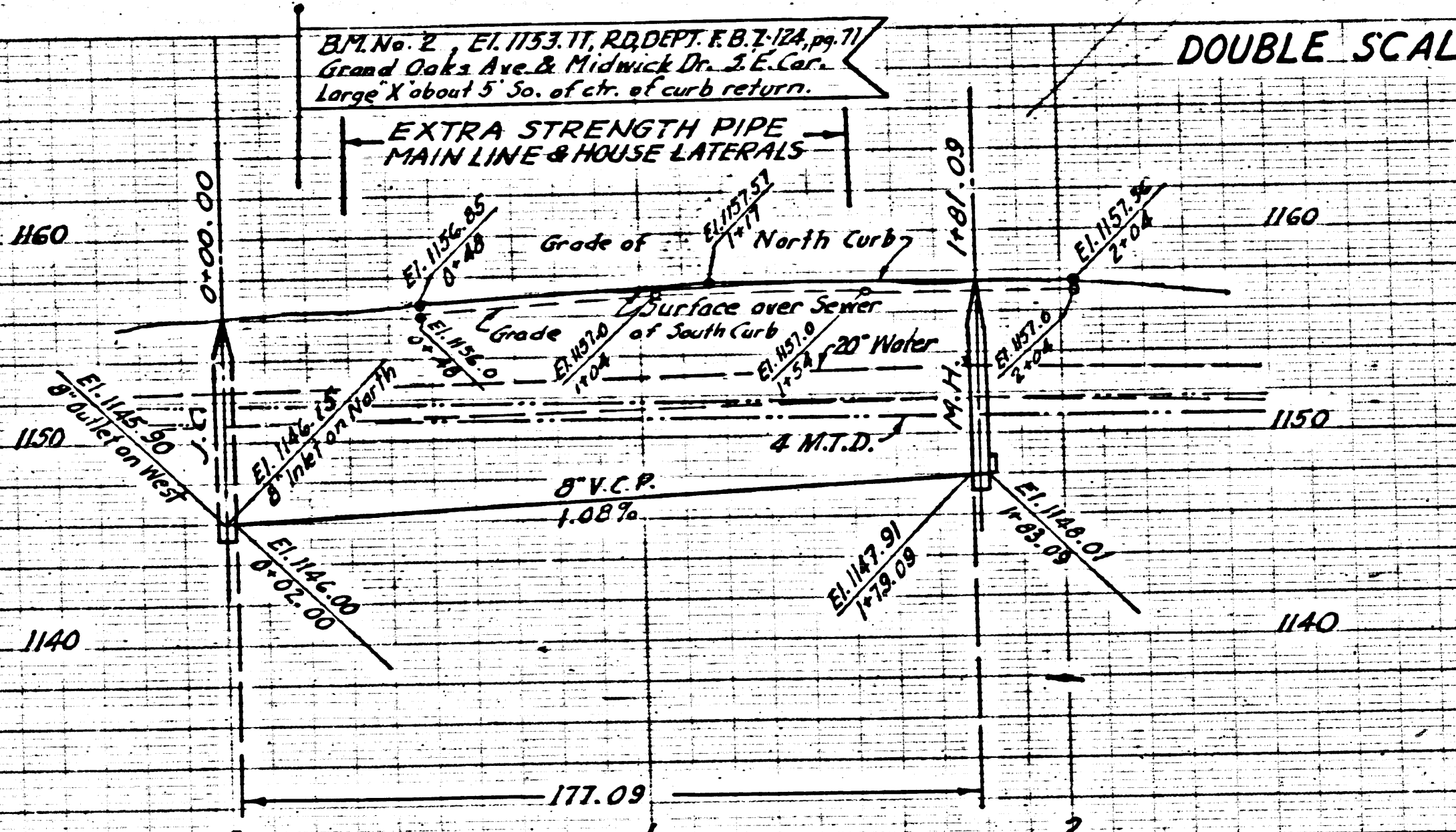


A
P.C. 2840
J.N.F. 796
Page 2
DOUBLE SCALE

(17,751)



NOTE:-
No representative of the County Engineer will survey or lay out any portion of the work. The owner or his authorized representative shall furnish the County Engineer with grade sheets and stations for all house laterals and Y branches and shall provide stakes for them at their proper locations with stationing plainly marked. Any change in location shall be requested in writing by the owner or his representative.
No revisions shall be made in the plans without approval of the County Engineer.

1. Use standard manhole frames and covers, 3'-0\"/>
- 2. Use standard strength pipe, except as noted.
- 3. Use cement mortar for all vitrified clay pipe joints.
- 4. Resurface all trench within paved area to meet L.A. County Road Dept. requirements.
- 5. Encase four feet of sewer at points of interference with poles, 5'-0\"/>
- 6. House laterals to be constructed with 1/2\"/>
- 7. All structures shall be brick sewer structures, 3'-0\"/>
- 8. To allowable leakage test use formula 141, Spec. No. 51.
- 9. Provide stakes on the property lines or property lines produced at right angles to the sewer line at the center line of each manhole.

Altadena Bldg. Dist. 3

PROFILE, ALIGNMENT AND GRADE OF
SANITARY SEWERS
TO BE CONSTRUCTED IN

TRACT No 18960

PRIVATE CONTRACT No 2840
W.S. 50
ONE SHEET

SCALE: VERT. 1"=8'
HORIZ. 1"=40'

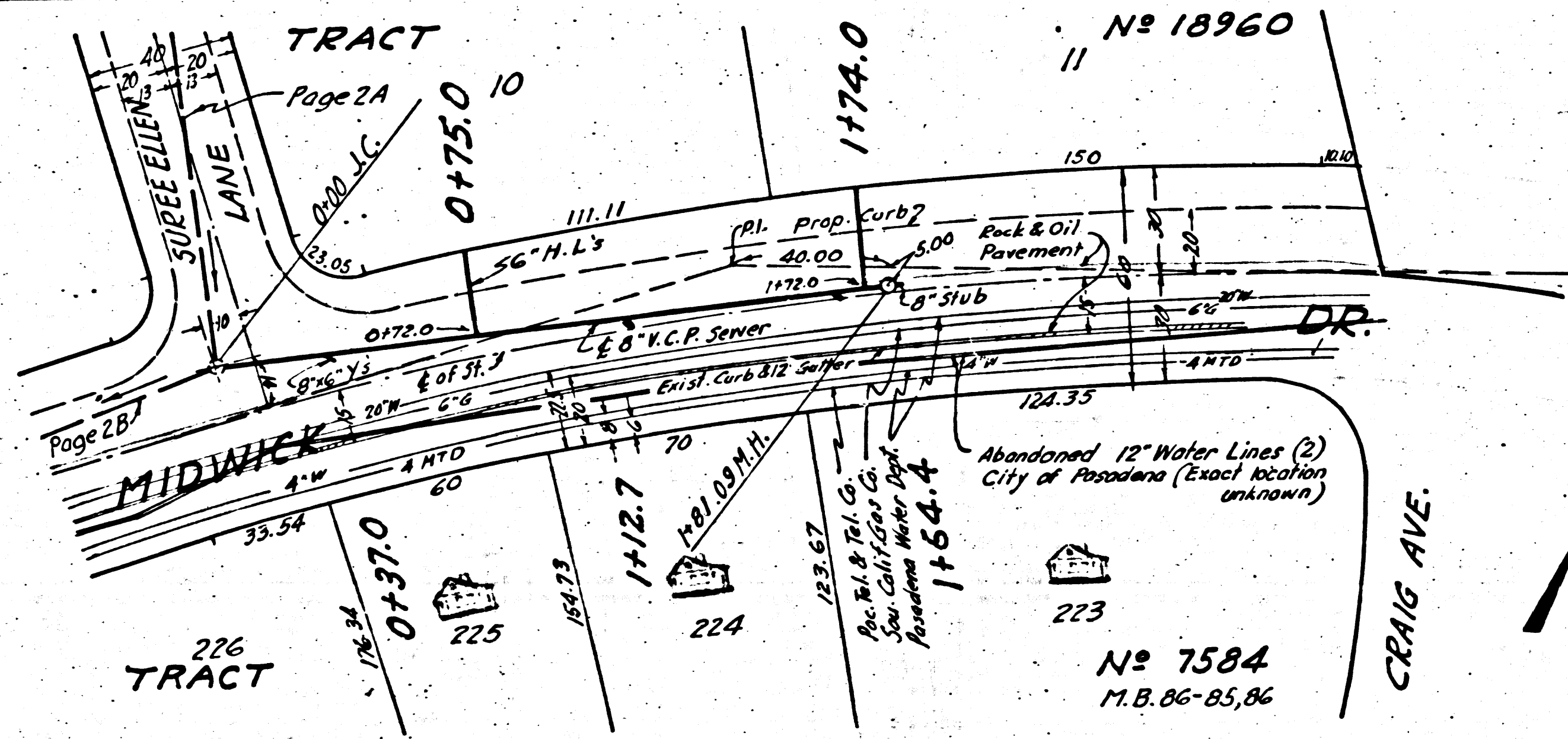
PREPARED BY *John M. Beal*
REG. C.E. No. 2837

OCT. 1953

FOR LEGEND SEE PLAN No 5-0-64

P.C. 2840
J.N.F. 796
Page 1

(17,750)



INDEX MAP
Scale 1"=500'
TRACT No 18960
P.C. 2840
J.N.F. 796

Altadena Building Office No 3

Checked 3-5-54 *W. L. Warren*

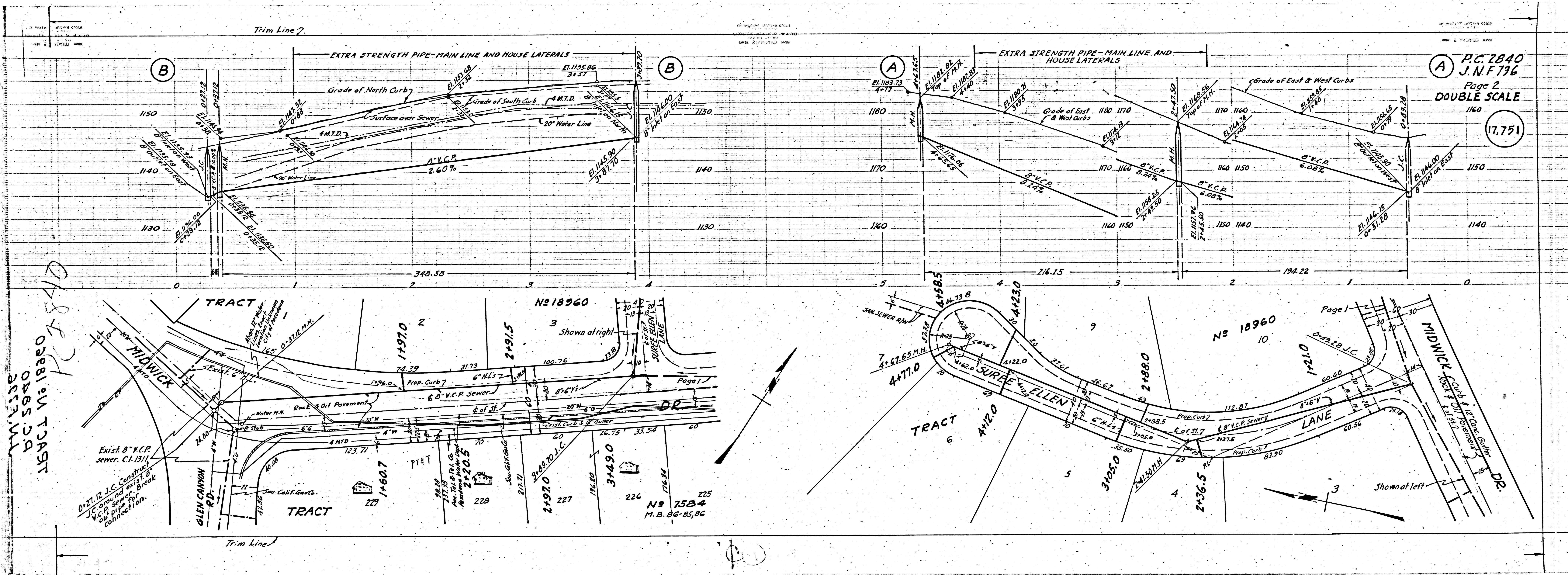
NOTE:-
Grades to which this improvement is to be constructed are shown on plans and profiles. Grade points for top of curbs, center line of streets, or center line of alleys are shown by circles on profiles. At all points between designated points the grade shall be established so as to conform to a straight line drawn between said designated points. Elevations are in feet above U.S.G.S. datum or mean sea level.
This drawing and the data hereon are hereby made a part of the specifications. Work shall be constructed according to specifications on file in the office of the County Engineer and shall be prosecuted only in the presence of the County Engineer. Before work can be started the contractor must obtain a permit to excavate in county streets from the L.A. County Road Dept., 108 W. 2nd St. and make a deposit with the County Engineer, 733 L.A. County Engineering Bldg., sufficient to cover the cost of construction inspection and record plans.
Approval of this plan by the County of Los Angeles does not constitute a representation as to the accuracy of the location of, or the existence or non-existence of, any underground utility, pipe or structure within the limits of this project. This note applies to all sheets.

COUNTY OF LOS ANGELES, CALIFORNIA
APPROVED, WILLIAM J. FOX, COUNTY ENGINEER
BY: *W. J. Fox*
ASST. CHIEF DEPUTY

APPROVED, A.M. RAWN
CHIEF ENGINEER COUNTY SAN. DIST. No. 11
BY: *A.M. Rawn*
OFFICE ENGINEER

CHECKED BY: *Richard E. Rubin* 11-12-53
OFFICE OF COUNTY ENGINEER, REG. C.E. No. 7860

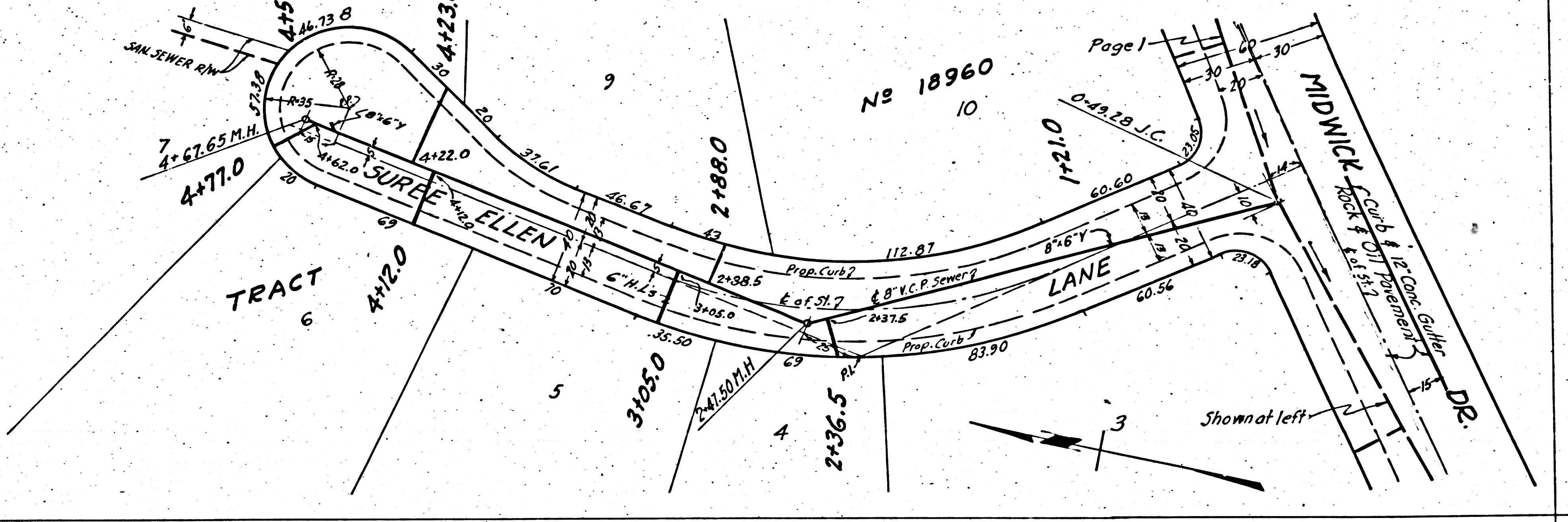
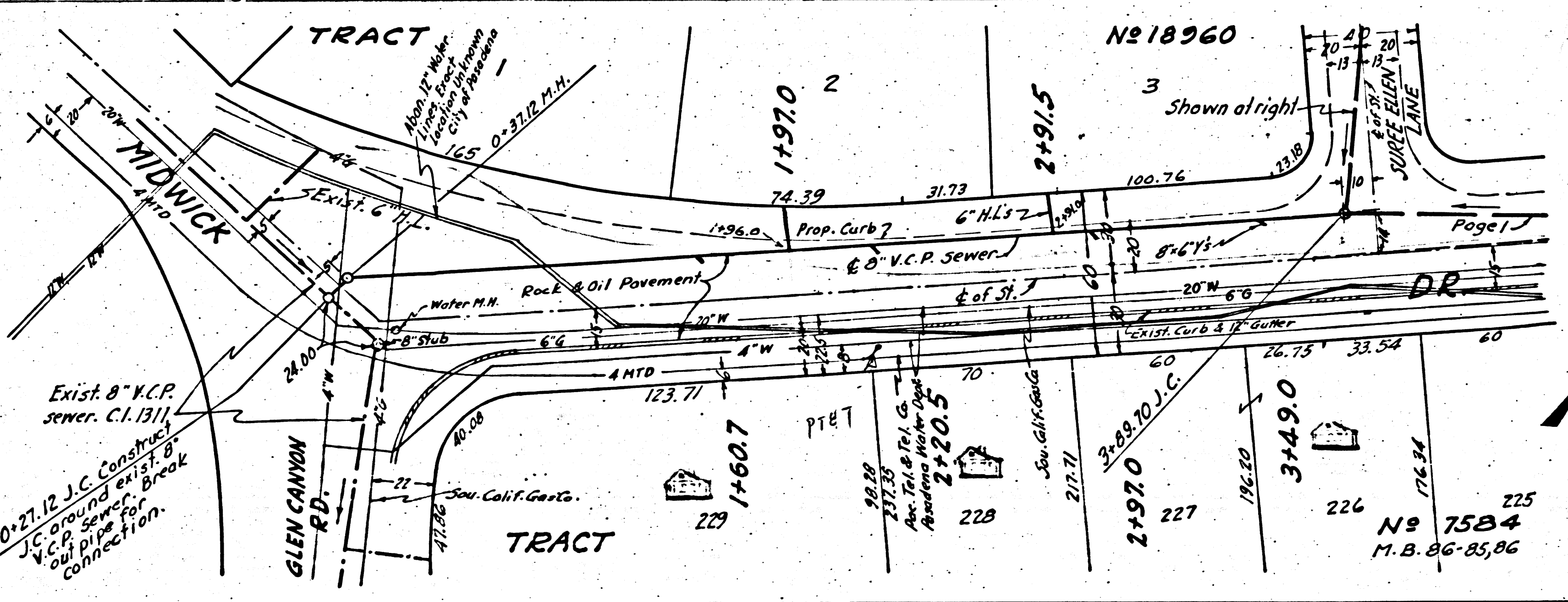
1049651
J.N.F. 796
P.C. 2840
SACD No 18960



P.C. 2840
 J.N.F. 796
 Page 2
 DOUBLE SCALE
 1/60

17,751

TRACT
 DC 5840
 TRACT No 1890
 PC 2840



No 7584
 M.B. 86-85, 86