

B.M. * M5 Elev. 150.18 * Chiseled
in Curb N.E. Cor. of Washington
Blvd. and Courts Ave.

Trim Line 7

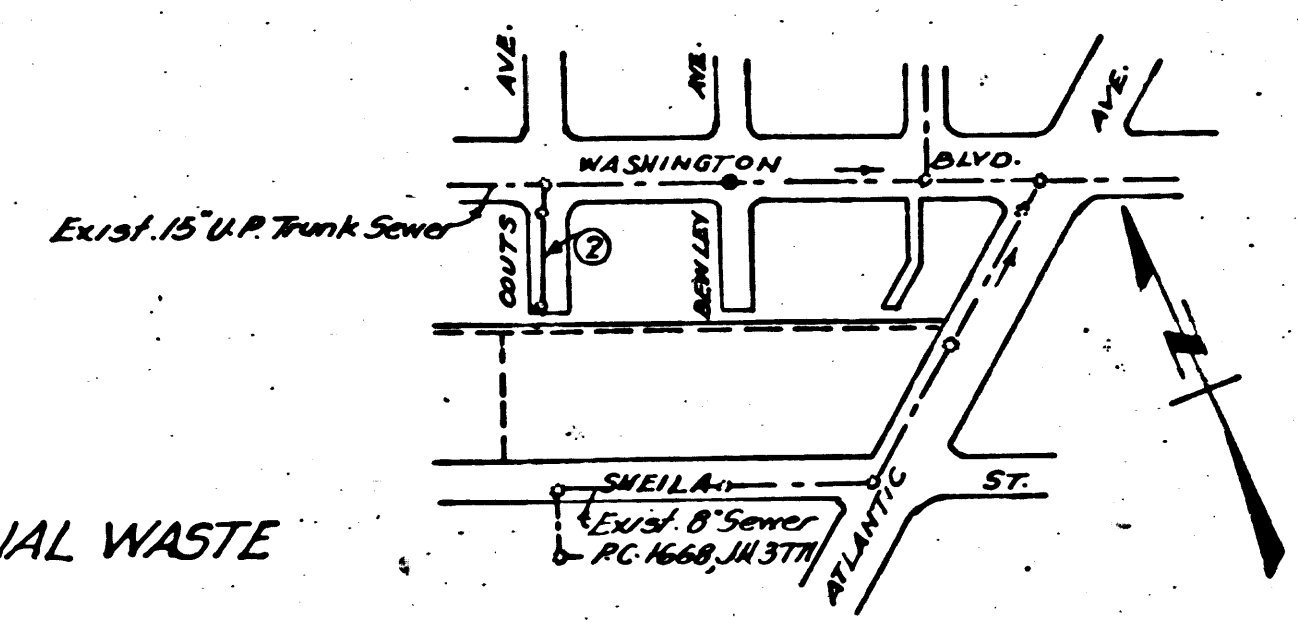
EAST LOS ANGELES BLDG. DIST. No 6

NOTE:
No representative of the County Engineer will survey or lay out any portion of the work.
The owner or his authorized representative shall furnish the County Engineer with grade sheets and stations for house connections and "Y" branches and shall provide stakes for them at their proper locations with stationing plainly marked. Any change in location shall be requested in writing by the owner or his representative.
No revisions shall be made in these plans without approval of the County Engineer.

1. Use standard manhole frames and covers, S-a-117.
2. Use standard strength pipe except as noted.
3. Use cement mortar for all vitrified clay pipe joints.
4. Resurface all trench within paved area to meet L. A. County Road Dept. or Calif. State Highway Dept. Requirements in accordance with permit.
5. Encase four feet of sewer at points of interference with poles, S-a-119.
6. ~~Encase four feet of sewer at points of interference with poles, S-a-119.~~
7. All structures shall be brick sewer structures, S-a-104.
8. Provide stakes on the property lines or property lines produced at right angles to the sewer line at the center of each manhole.
9. Manhole tops in unimproved rights of way to be 6 in. above the finished grade of the ground at that point.

Before breaking into any existing structure and before final acceptance of this work, County Sanitation District should be notified in order that required inspections may be made.

SHEET NO	PAGES
7	1-2



APPROVED, A. G. PICKETT, INDUSTRIAL WASTE ENGINEER.
By *Wynne Clark* 12/4/53

INDEX MAP
SCALE 1"=400'
P.C. 2857-JIN 0956.EI

COLLECT CHARGES AS INDICATED
S.S. Carlson 4-15-54

**PROFILE, ALIGNMENT AND GRADE OF
SANITARY SEWERS
TO BE CONSTRUCTED IN
COURTS AVENUE AND
SANITARY SEWER RIGHT OF WAY
PRIVATE CONTRACT No. 2857
W. S. 36**

P.C. 2857
J.N. 0956.EI
PAGE 1

SCALE: VERT. 1" = 4'
HORIZ. 1" = 40'

NOVEMBER 1953

Prepared in the Office of
KARL F. TUTTLE ENGINEERING COMPANY, Inc.

By *W. S. 36*
REG. C. E. NO. 7648

FOR LEGEND SEE PLAN NO. S-a-64

NOTE:
Grades to which this improvement is to be constructed are shown on plans and profiles. Grade points for top of curbs, centerline of streets or center line of alley are shown by circles on profiles. At all points between designated points, the grade shall be established so as to conform to a straight line drawn between said designated points.
Elevations are in feet above U.S.G.S. datum or mean sea level.
This drawing and the data hereon are hereby made a part of the specifications.
Work shall be constructed according to specifications on file in the office of the County Engineer and shall be prosecuted only in the presence of the County Engineer.
Before work can be started the Contractor must obtain a permit to excavate in County streets from the L. A. County Road Department, 108 West 2nd Street, and make a deposit with the County Engineer, 733 L. A. County Engineering Building, sufficient to cover the cost of construction, inspection and record plans.
Approval of this plan by the County of Los Angeles does not constitute a representation as to the accuracy of the location of, or the existence or non-existence, of any underground utility, pipe or structure within the limits of this project. This note applies to all sheets.

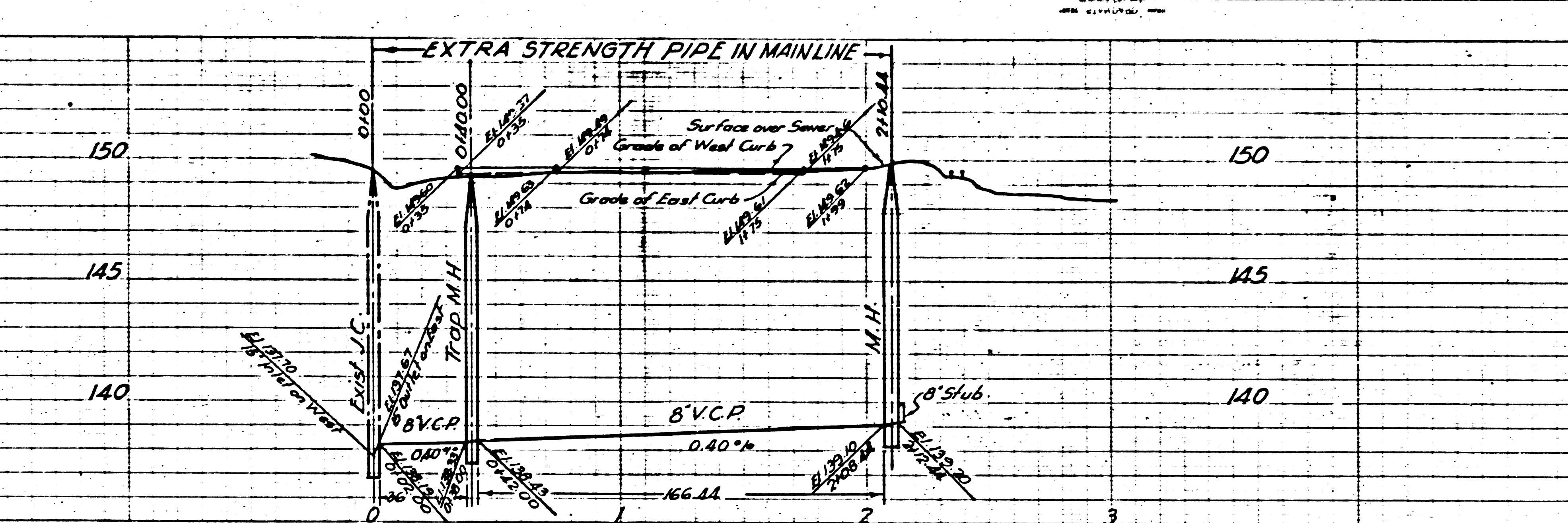
COUNTY OF LOS ANGELES

Approved, WILLIAM J. FOX COUNTY ENGINEER
By *A. P. Pickett* Sanitation Engineer
Approved A. M. RAWN
San. Dist. No. 2
By *Wynne Clark* Office Engineer
Checked By: *W. S. 36* 4-15-54
Office of County Engineer, Reg. C.E. No. 2860

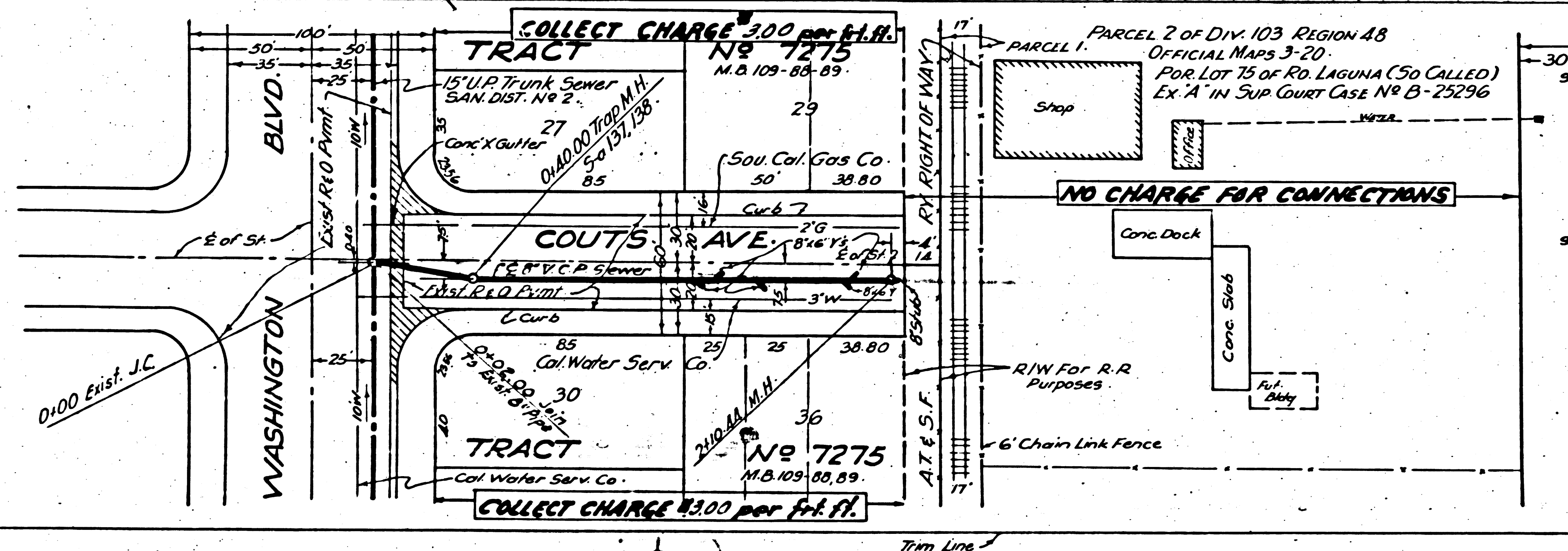
PC-2857
 W. S. 36
 12/4/53
 15,320 N.V.

Trim Line

R 2757



RC. 2857
J.N. 0956.21
PAGE 2



Page from Line 1