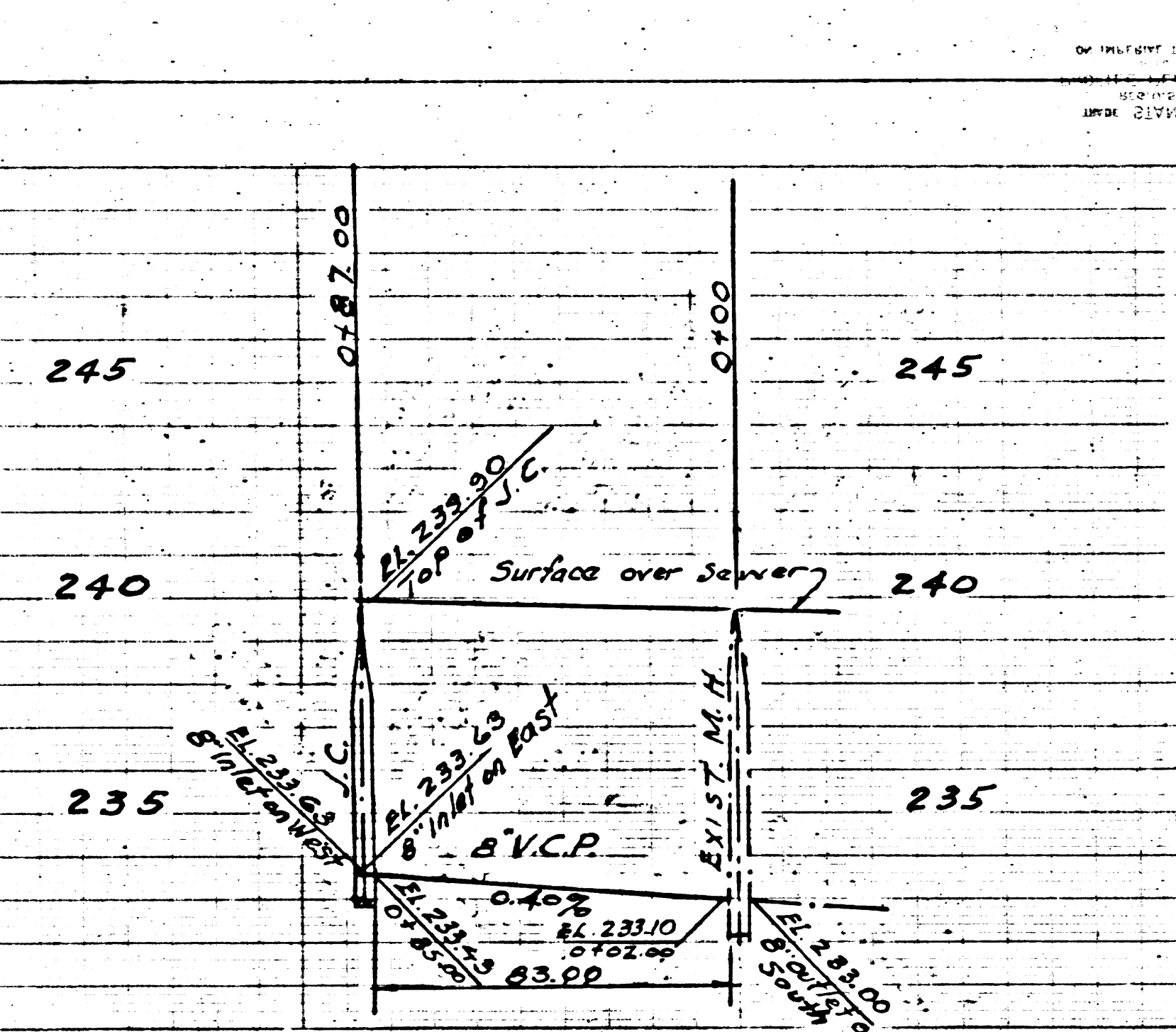


C. 2866  
M. F. 830  
Page 2

(17,712)



B.M. M.F. 143 Elev. 235.890  
 F.B. 1728 P. 81, Bk. Spk. in Curb  
 S.E. Cor. MERCED AVE. & ALESIA ST.  
 5' E. of East end of Curb return.

Note: To conform to Datum shown on Street plans add .09 to Sewer elevations shown hereon.

PUENTE BUILDING DIST. #2

**NOTE:**  
 Grades to which this improvement is to be constructed are shown on plans and profiles. Grade points for top of curb, centerline of street or centerline of alley are shown by circles on a profile. At all points between designated points the grade shall be established so as to conform to a straight line drawn between said designated points. Elevations are in feet above U.S.G.S. datum or mean sea level. This drawing and the data hereon are hereby made a part of the specifications. Work shall be constructed according to specifications on file in the office of the County Engineer and shall be prosecuted only in the presence of the County Engineer.

Before work can be started, the contractor must obtain a permit to excavate in County streets from the L.A. County Road Dept., 108 N. End St. and make a deposit with the County Engineer, 733 L.A. Co. Engr. Bldg., sufficient to cover the cost of construction inspection and report plans.

Approval of this plan by the County of Los Angeles does not constitute a representation as to the accuracy of the location of, or the existence or non-existence of, any underground utility, pipe, or structure within the limits of this project.

If work is to be done in a State Highway, a permit must be obtained from the State of California, Division of Highways, 120 South Spring Street.

**NOTE:**  
 Provide stakes on the proposed lines or property lines produced at right angles to the sewer line at the centerline of each manhole.

No representative of the County Engineer will survey or lay out any portion of the work.

The owner or his authorized representative shall furnish the County Engineer with grade sheets and stations for all house laterals and Y-branches and shall provide stakes for them at their proper locations with stationing plainly marked. Any change in location shall be requested in writing by the owner or his representative. No revisions shall be made in these plans without approval of the County Engineer.

USE STANDARD MANHOLE FRAMES AND COVERS, 3'-0" DIA., EXCEPT AS NOTED.  
 USE STANDARD STRENGTH PIPE, EXCEPT AS NOTED.  
 USE JOINT COMPOUND FOR ALL VITRIFIED CLAY PIPE JOINTS, SPEC. SEC. 51.  
 RESURFACE ALL TRENCH WITHIN PAVED AREA TO MEET L.A. COUNTY ROAD DEPT. OR CALIF. STATE HIGHWAY DEPT. REQUIREMENTS IN ACCORDANCE WITH PERMIT EXCISE FOUR FEET OR SEWER AT POINTS OF INTERFERENCE WITH POLES, 3'-0" DIA. HOLES IN TRENCH TO BE CONSTRUCTED WITH INTEREST AT PROPERTY LINE 6 FEET BELOW CURB GRADE EXCEPT AS NOTED.  
 ALL STRUCTURES SHALL BE BRICK CHAMBER STRUCTURES, 3'-0" DIA., EXCEPT AS NOTED.  
 FOR ALLOWABLE LEAKAGE TEST, USE FORMULA NO. 2, SPEC. SEC. 51.  
 WIRE AND TAGS NOT REQUIRED.

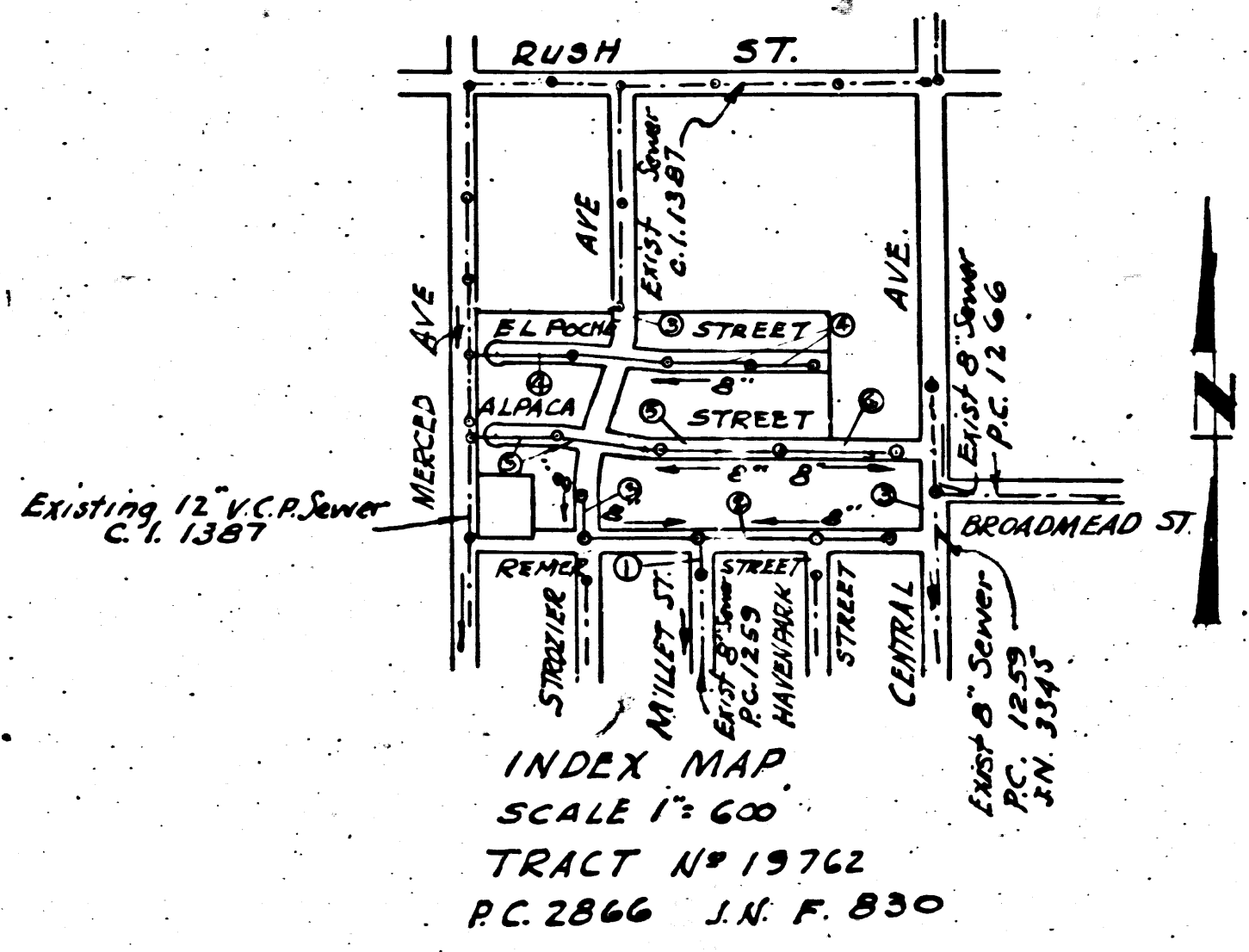
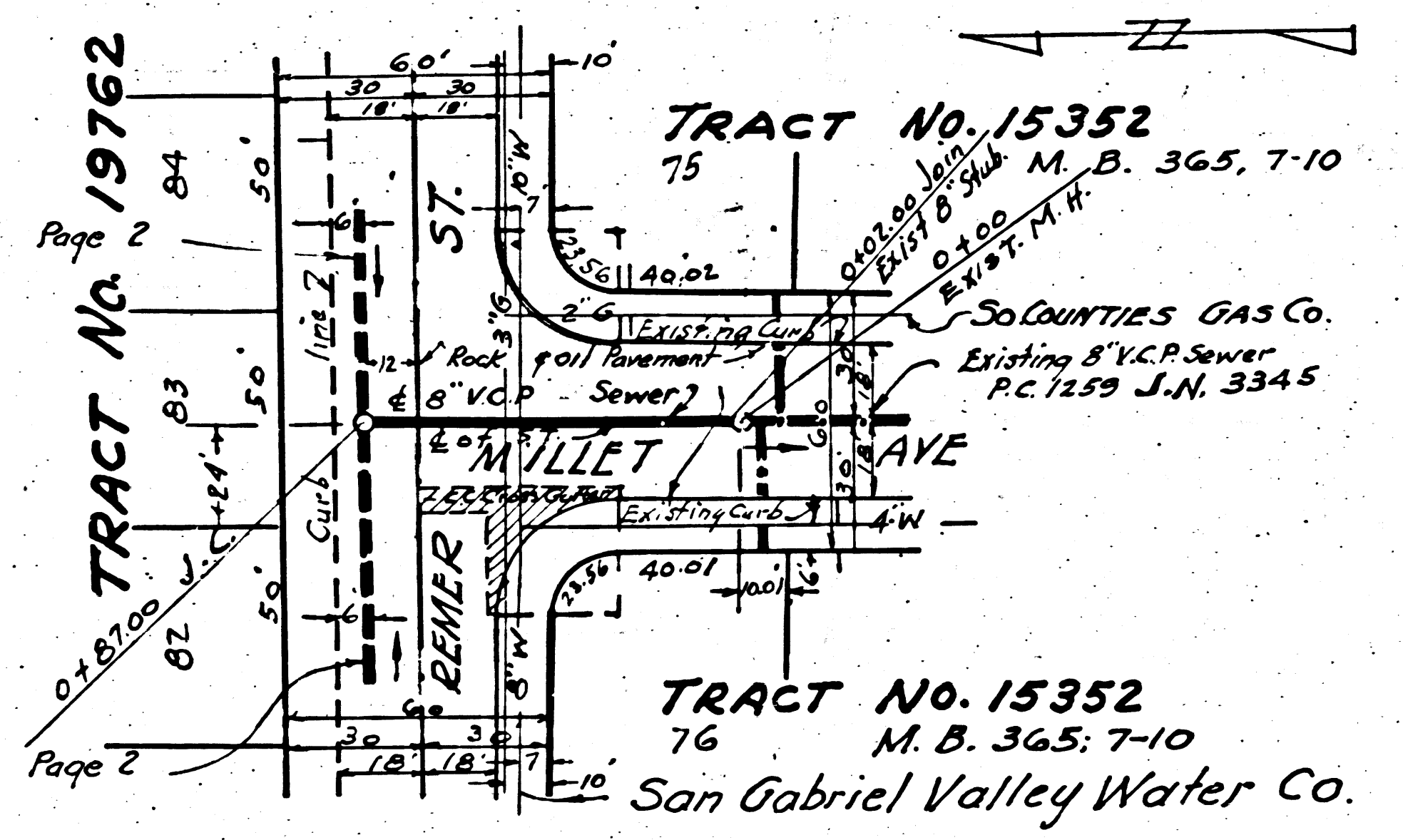
SHEET NO.	PAGES
1	1-3
2	4-6

PROFILE ALIGNMENT AND GRADE OF  
**SANITARY SEWERS**  
 TO BE CONSTRUCTED IN  
**TRACT NO. 19762**

PRIVATE CONTRACT NO. 2866  
 SHEET 1 OF 2 SHEETS  
 November, 1953

W.S. 37  
 FOR LEGEND See Plan No. 5-a-64  
 PREPARED BY TRACY R. BOUSMAN  
 COUNTY OF LOS ANGELES, CALIFORNIA

APPROVED: WILLIAM J. FOX, COUNTY ENGINEER.  
 APPROVED: A.M. RAWN, CHIEF ENGINEER  
 COUNTY SANITATION DISTRICT NO. 15  
 CHECKED BY: R. E. KILMER, OFFICE ENGINEER  
 OFFICE OF THE COUNTY ENGINEER, REG. C.E. NO. 7860



checked 2-15-54 W. L. ...

(1)

(17,711)

(6)

TRACT NO. 19762

P.C. 2866  
M.F. 830

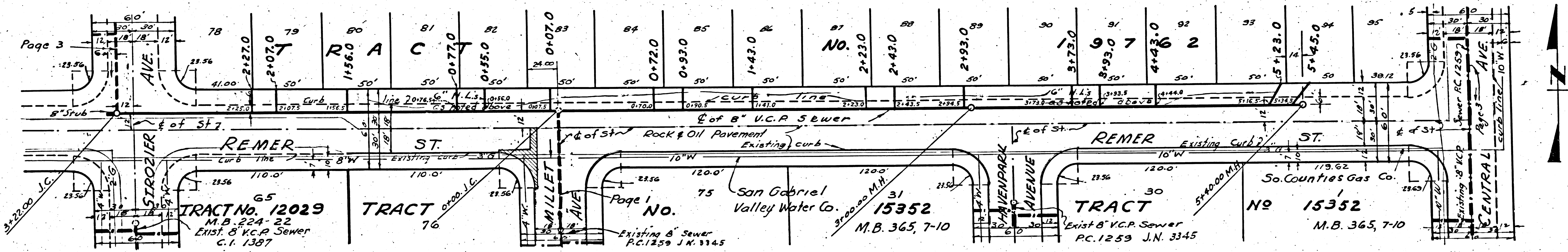
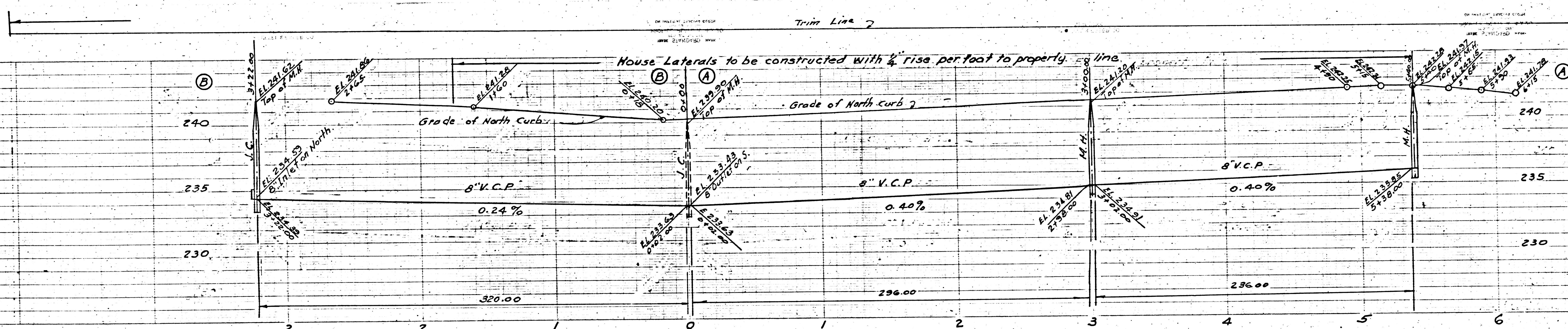


PC 2866  
J.N.F.830  
Page 3

(7,713)

PC 2866  
J.N.F.830  
Page 2

(17,712)



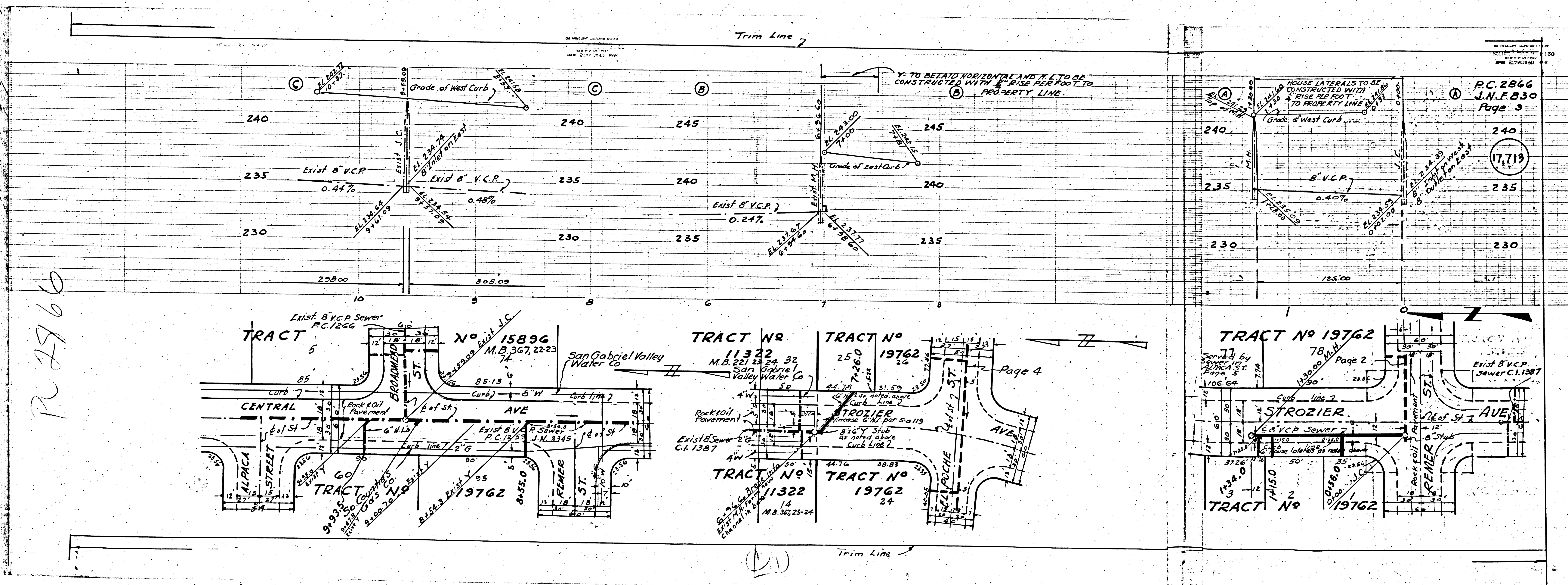
Exist 8" V.C.P. Sewer C.I. 1387

Exist 8" V.C.P. Sewer PC. 1259 J.N. 3345

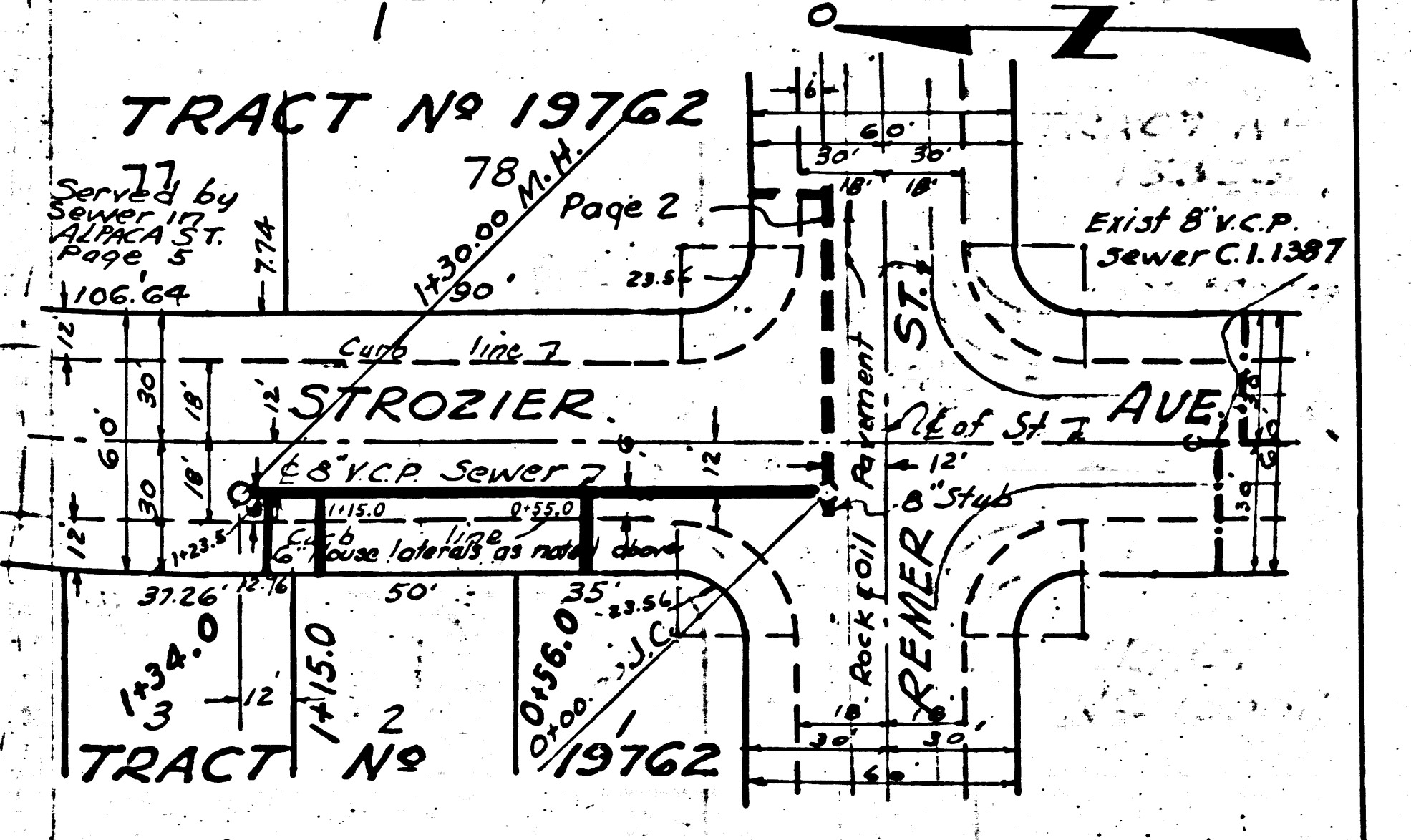
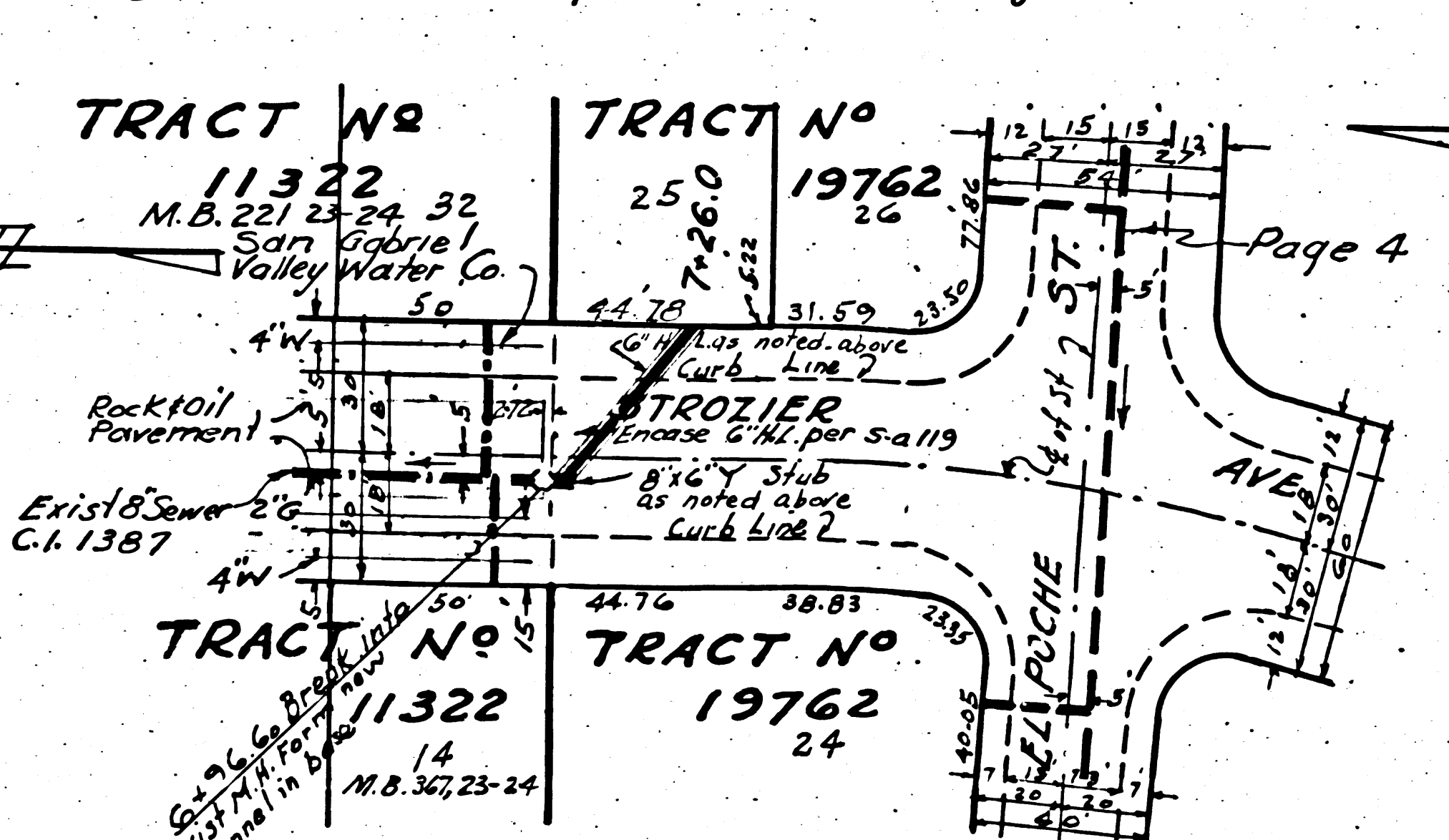
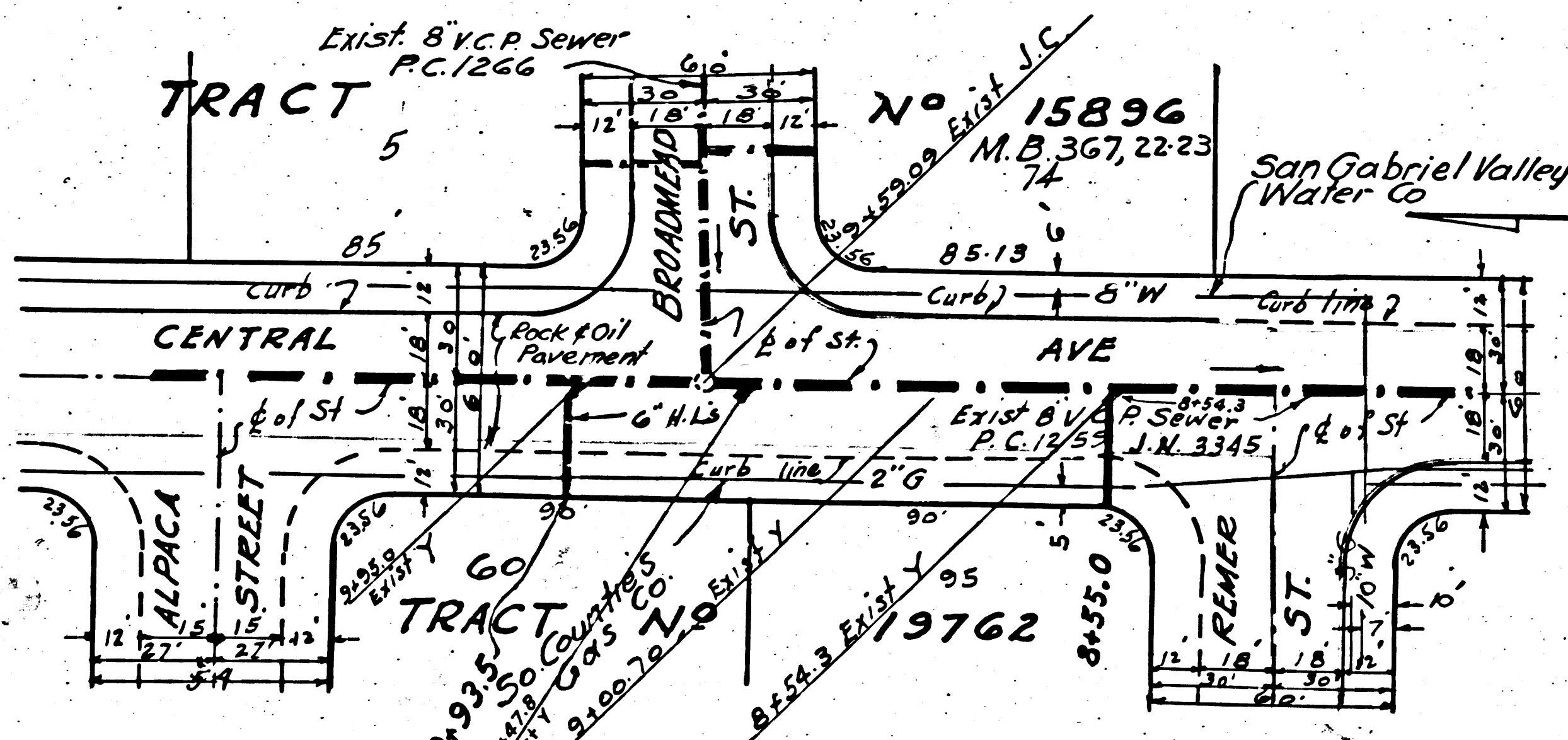
Exist 8" V.C.P. Sewer PC. 1259 J.N. 3345

Trim Line  
112





R 2966

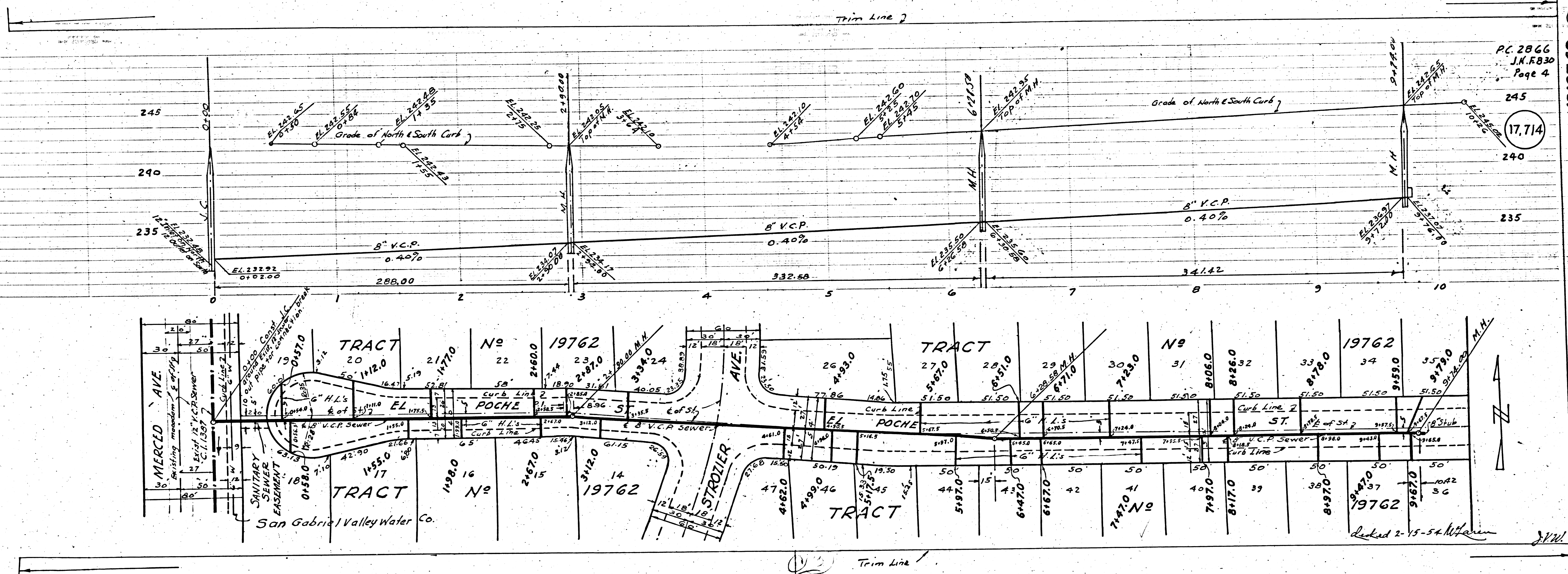


Trim Line



866  
830  
e 5

715



P.C. 2866  
J.M. F830  
Page 4

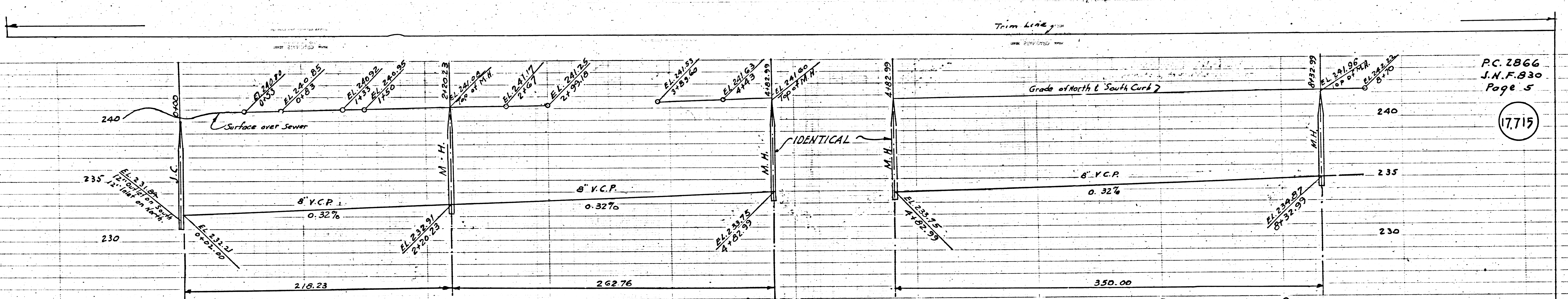
17.714

TRACT No 19762

P.C. 2866

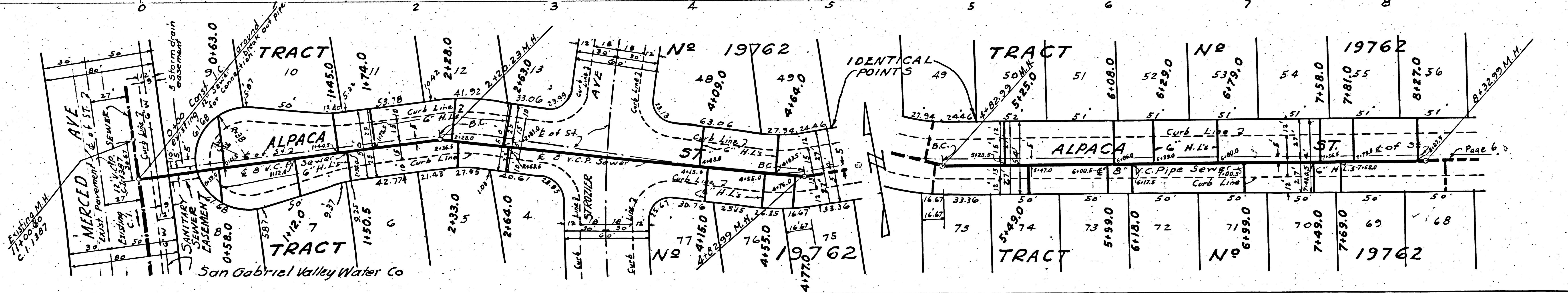
968730  
J.W.





P.C. 2866  
J.N.F.830  
Page 5

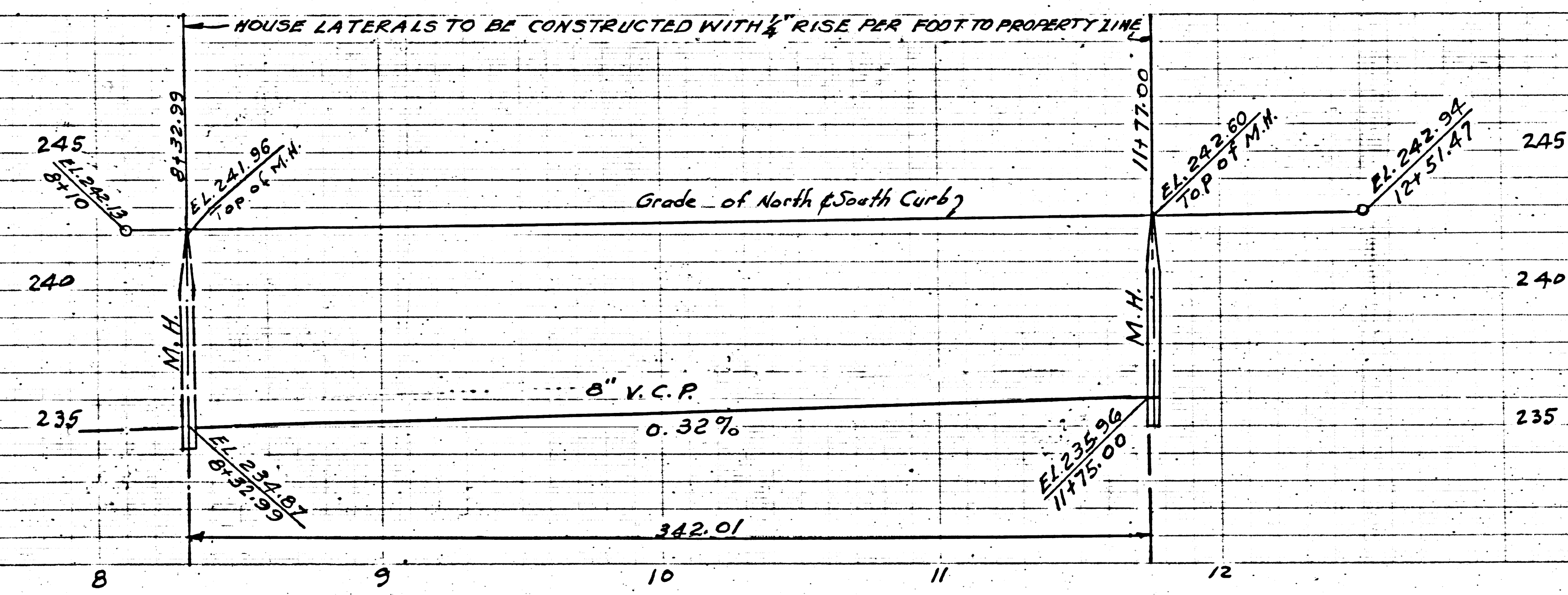
(7715)



Trim Line

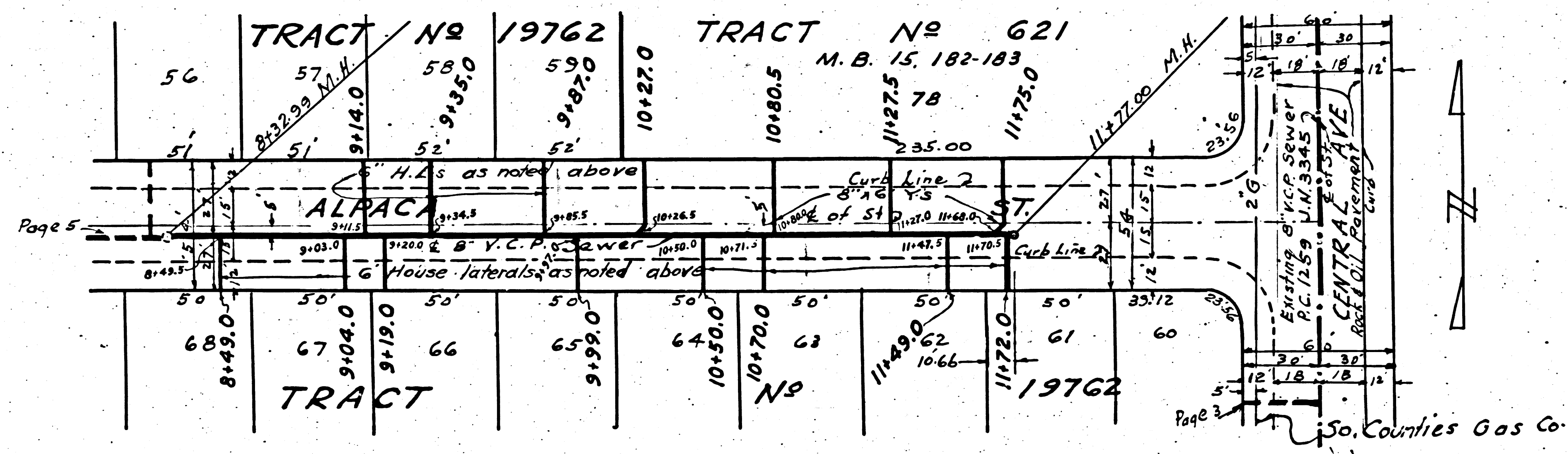


Trim Line



P.C. 2866  
J.N.F. 830  
Page 6

17.716



So. Counties Gas Co.

Trim Line

Excavated  
7/10/06  
C.I. 1997