

PC 2879
J.N.F 848
SE 2

18,010

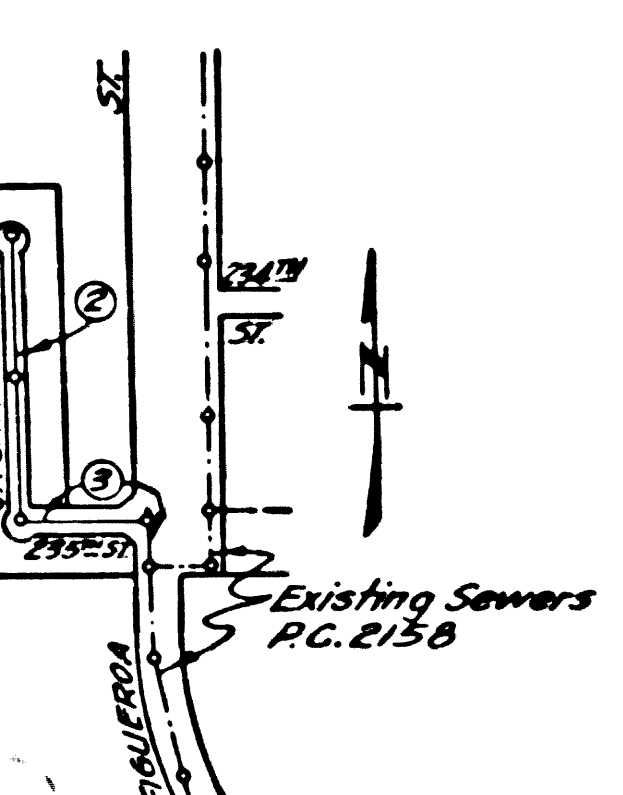
B.M. El. 41.645, F.B. L.Q. 632-1
Spk. in part 75' S. of & of Sepulveda Blvd.
and 11' E. of & of Main St. - B.M. 1C

Sheet No	Pages
1	1-3

Sheet 4-23-54 McGowan

INDEX MAP
SCALE - 1" = 600'
PC 2879
J.N.F 848

NO CHARGE FOR
CONNECTIONS
Luis S. Ruiz



PC 2879
A10FA3

LOMITA BLDG. DIST. N^o 7L

- NOTE:
Provide stakes on the property lines or property lines produced at right angles to the sewer line at the center line of each manhole.
No representative of the County Engineer will survey or layout any portion of the work. The owner or his authorized representative shall furnish the County Engineer with grade sheets and stations for all house laterals and Y branches and shall provide stakes for them at their proper locations with stationing plainly marked. Any change in location shall be requested in writing by the owner or his representative.
No revisions shall be made in these plans without the approval of the County Engineer.
1. Use standard manhole frames and covers, S-a-117, except as noted.
 2. Use standard strength pipe except as noted.
 3. Use cement mortar for all vitrified clay pipe joints.
 4. Resurface all trench within paved area to meet L.A. County Road Dept. or Calif. State Highway Dept. requirements in accordance with permit.
 5. Encase four feet of sewer at points of interference with poles, S-a-119.
 6. House laterals to be constructed with inverts at property line... feet below curb grade except as noted.
 7. All structures shall be brick sewer structures, S-a-104, except as noted.
 8. For allowable leakage test, use Formula No. 1, Spec's., Sec. 51.
 9. Wire & tags not required.

PROFILE, ALIGNMENT AND GRADE OF
SANITARY SEWERS
TO BE CONSTRUCTED IN

TRACT N^o 17559
PRIVATE CONTRACT NO. 2879
W. S. 28

SHEET 1 OF 1 SHEETS
DECEMBER 1958
PREPARED IN THE OFFICES OF
HARRY GILBERT
FOR LEGEND SEE PLAN NO. S-a-64

NOTE:
Grades to which this improvement is to be constructed are shown on plans and profiles. Grade points for top of curbs, center line of streets, or center line of alleys are shown by circles on profiles. At all points between designated points the grade shall be established so as to conform to a straight line drawn between said designated points. Elevations are in feet above U.S.G.S. datum or mean sea level.
This drawing and the data hereon are hereby made a part of the specifications.
Work shall be constructed according to specifications on file in the office of the County Engineer and shall be prosecuted only in the presence of the County Engineer.
Before work can be started, the contractor must obtain a permit to excavate in County streets from the L.A. County Road Dept., 108 W. 2nd St. and make a deposit with the County Engineer, 733 L.A. County Engineering Building, sufficient to cover the cost of construction inspection and record plans.
Approval of this plan by the County of Los Angeles does not constitute a representation as to the accuracy of the location of or the existence or non-existence of any underground utility, pipe, or structure within the limits of this project. This note applies to all sheets.
If work is to be done in a State Highway, a permit must be obtained from the State of California, Division of Highways, 120 South Spring Street.

COUNTY OF LOS ANGELES, CALIFORNIA
Approved, William J. Fox, County Engineer
Approved, A. M. Pavn
CHIEF DISTRICT ENGINEER
Checked By: Arthur S. Rosenfeld
Office of County Engineer, Bldg. C. E. No. 6805.

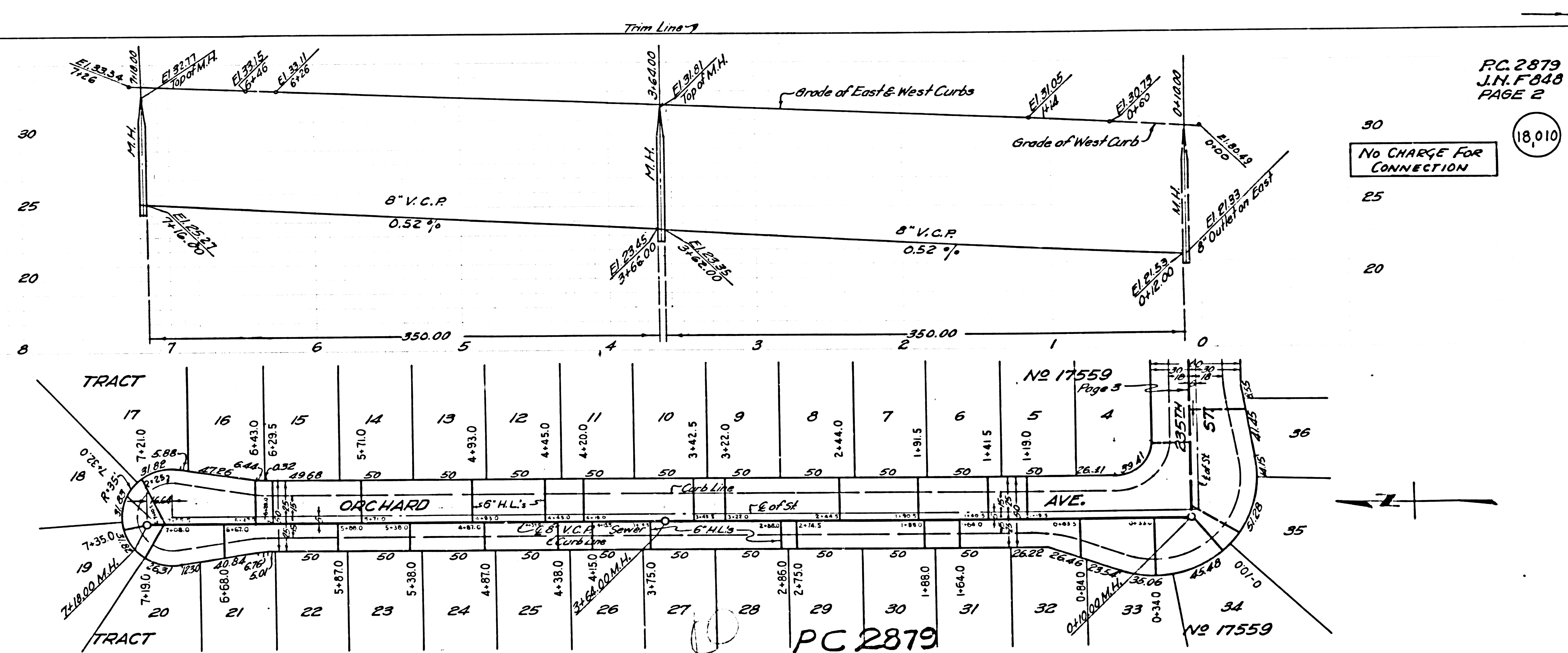
PC 2879
J.N.F 848
PAGE 1
J.N. 0969.32

18,009

REVISION FOOT

PC 2879

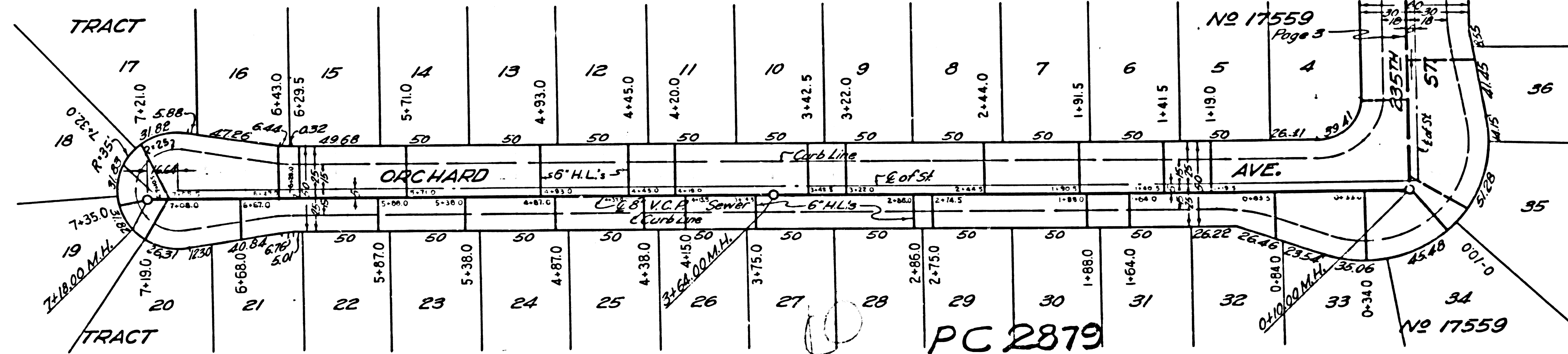
2879



P.C. 2879
 J.H. F848
 PAGE 2
 18,010
 NO CHARGE FOR CONNECTION

C Page Trim Line

C Page Trim Line



PC 2879
 AZ OF A3

C. 2879
N.F. 848
PAGE 2

18,010

B.M. EL. 41.645, F.B. L.Q. 632-1
Spk. in part 75' S. of E. of Sepulveda Blvd.
and 11' E. of E. of Main St. - B.M. 1C

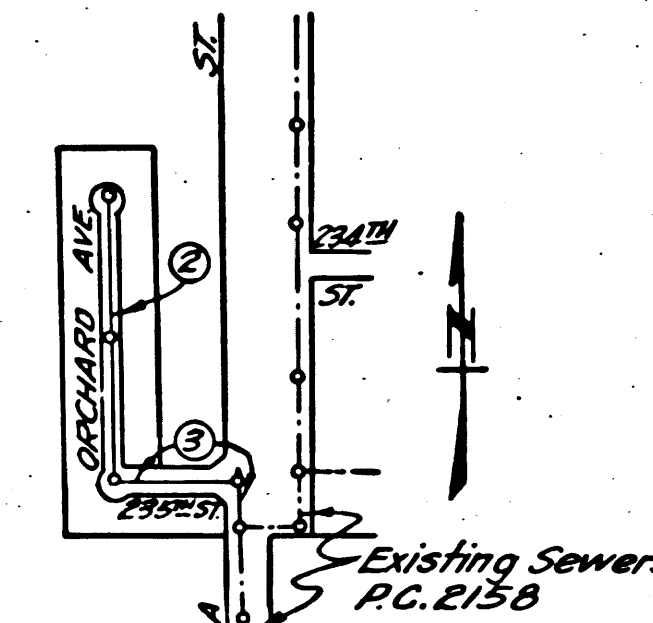
LOMITA BLDG. DIST. NO 7L

NOTE:
Provide stakes on the property lines or property lines produced at right angles to the sewer line at the center line of each manhole.
No representative of the County Engineer will survey or layout any portion of the work. The owner or his authorized representative shall furnish the County Engineer with grade sheets and stations for all house laterals and Y branches and shall provide stakes for them at their proper locations with stationing plainly marked. Any change in location shall be requested in writing by the owner or his representative.
No revisions shall be made in these plans without the approval of the County Engineer.

1. Use standard manhole frames and covers, S-a-117, except as noted.
2. Use standard strength pipe except as noted.
3. Use cement mortar for all vitrified clay pipe joints.
4. Resurface all trench within paved areas to meet L.A. County Road Dept. or Calif. State Highway Dept. requirements in accordance with permit.
5. Encase four feet of sewer at points of interference with poles, S-a-119.
6. House laterals to be constructed with inverts at property line...feet below curb grade except as noted.
7. All structures shall be brick sewer structures, S-a-104, except as noted.

8. For allowable leakage test, use Formula No. 1, Spec's., Sec. 51.
9. Wire & tags not required

Sheet No.	Pages
1	1-3



NO CHARGE FOR CONNECTIONS

checked 4-23-54 McLaren

PROFILE, ALIGNMENT AND GRADE OF
SANITARY SEWERS
TO BE CONSTRUCTED IN

TRACT NO 17559

PRIVATE CONTRACT NO. 2879
W. S. 28

SHEET 1 OF 1 SHEETS
Scale: VERT. 1" = 4'
HORIZ. 1" = 40'
DECEMBER 1953

PREPARED IN THE OFFICES OF
HARRY GILBERT
Reg. C. E. No. 1737
FOR LEGEND SEE PLAN NO. S-a-64

NOTE:
Grades to which this improvement is to be constructed are shown on plans and profiles. Grade points for top of curbs, center line of streets, or center line of alleys are shown by circles on profiles. At all points between designated points the grade shall be established so as to conform to a straight line drawn between said designated points.
Elevations are in feet above U.S.G.S. datum or mean sea level.
This drawing and the data hereon are hereby made a part of the specifications.
Work shall be constructed according to specifications on file in the office of the County Engineer and shall be prosecuted only in the presence of the County Engineer.
Before work can be started, the contractor must obtain a permit to excavate in County streets from the L.A. County Road Dept., 108 W. 2nd St. and make a deposit with the County Engineer, 733 L.A. County Engineering Building, sufficient to cover the cost of construction inspection and record plans.
Approval of this plan by the County of Los Angeles does not constitute a representation as to the accuracy of the location of or the existence or non-existence of any underground utility, pipe, or structure within the limits of this project. This note applies to all sheets.
If work is to be done in a State Highway, a permit must be obtained from the State of California, Division of Highways, 120 South Spring Street.

COUNTY OF LOS ANGELES, CALIFORNIA
Approved, William J. Fox, County Engineer
Approved, A. M. Pawn
CHIEF ENGR. CO. SAN. DIST. NO. 8
Checked By: Arthur S. Rosenfeld
Office of County Engineer, Reg. C. E. No. 8805

P.C. 2879
J.N. F 848
PAGE 1
J.N. 0969.32

18,009

(9)

checked on 1/28/54
8487 W.J.
SE 880 W.J.
P.C. 2879
J.N. F 848

PC 2879

