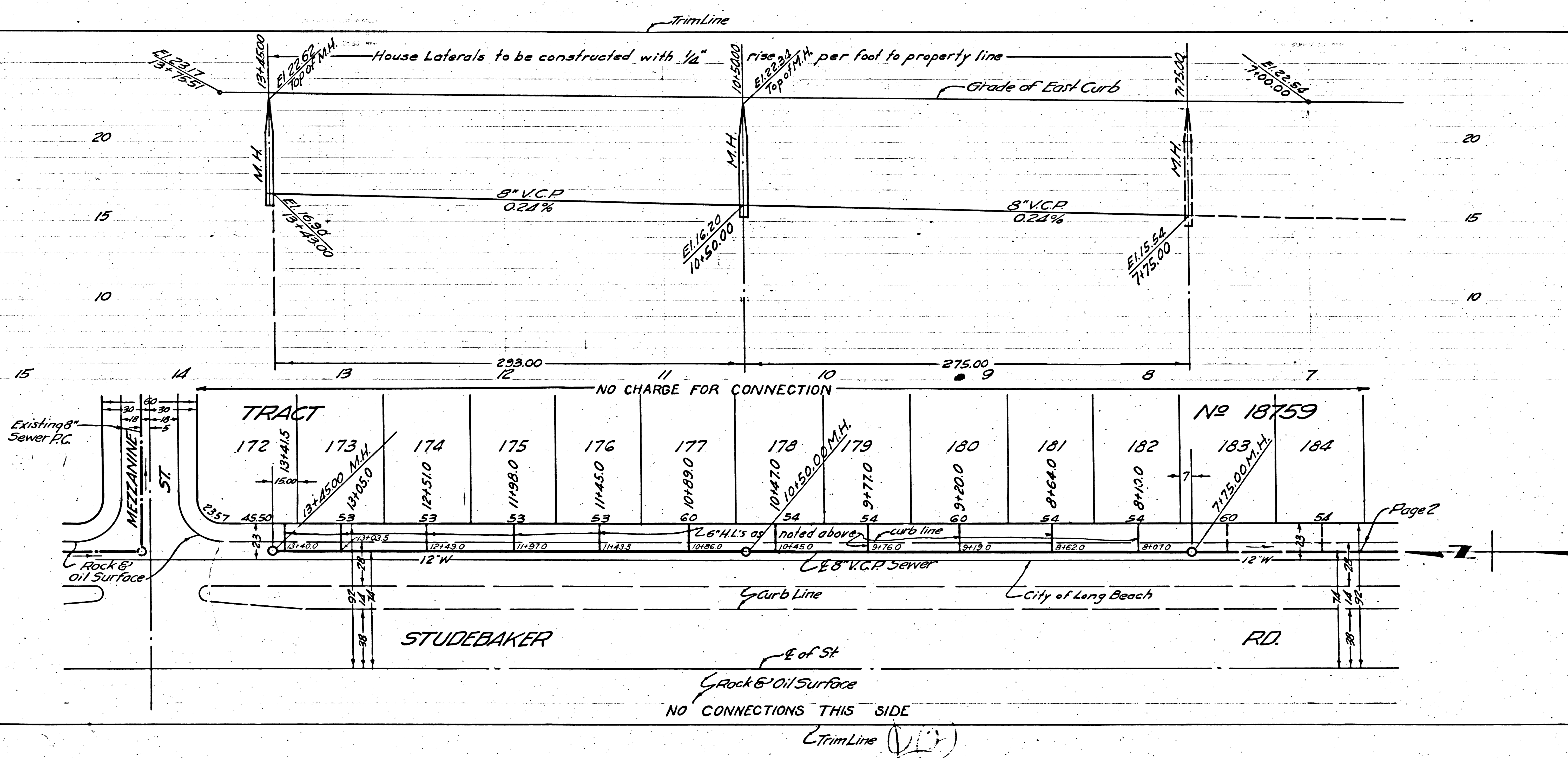


PC 2881
J.N.F.850
PAGE 2

18,043

- 14' - 10" Richfield Oil
- 11' - 24" Long Beach Water
- 9.5' - 4" Texas Gasoline
- 9' - 6" Sunset Oil
- 8' - 8" Shell Oil
- 10" I.F.S. (Aband.)
- 8" Texas Oil
- 4" Texas Gasoline
- 5" I.F.S. Gas

NO CONNECTIONS ON THIS SIDE
Trim Line

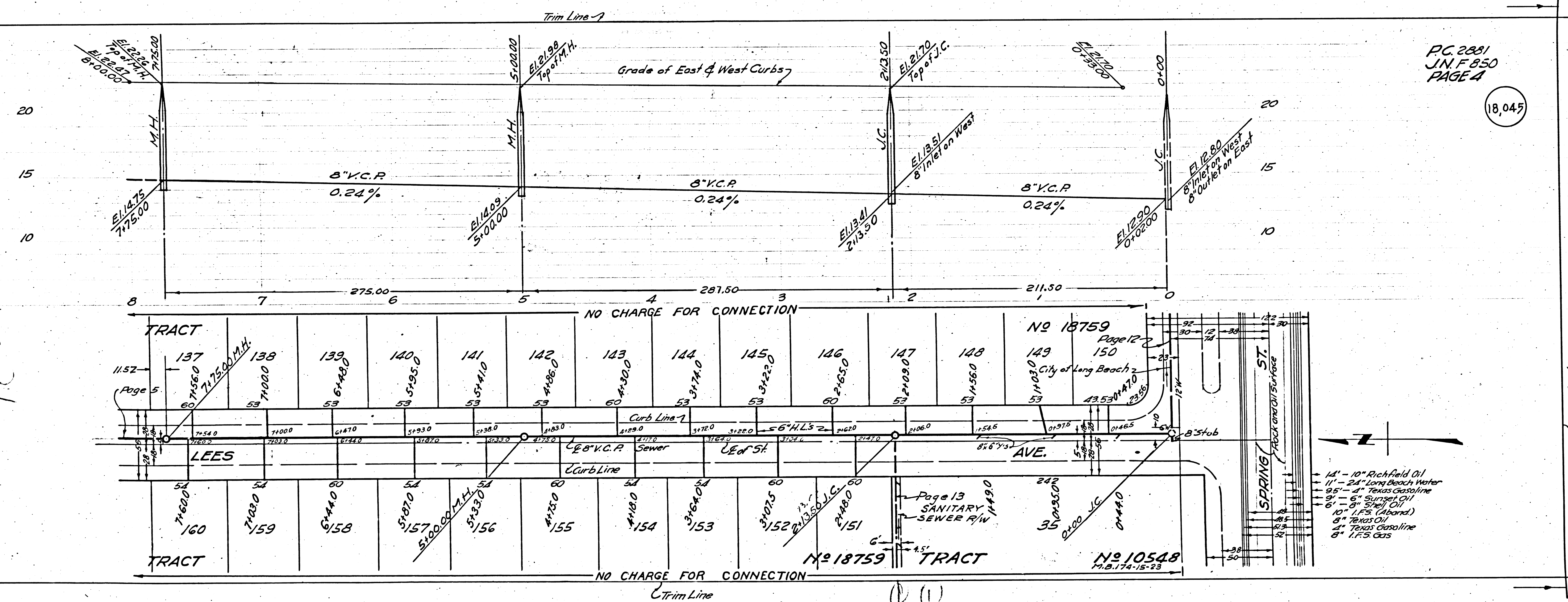


PC 2881
J.N. F850
PAGE 3

18,044

Page Trim Line

PC 2881



- 14" - 10" Richfield Oil
- 11" - 24" Long Beach Water
- 9.5" - 4" Texas Gasoline
- 9" - 5" Sunray Oil
- 8" - 9" Sunray Oil
- 10" - 1.5" (Abroad)
- 8" - Texas Oil
- 4" - Texas Gasoline
- 8" - 1.5" Gas

PC 2881
J.N.F. 850
PAGE 4

18,045

NO CHARGE FOR CONNECTION

NO CHARGE FOR CONNECTION

Trim Line

Page 12

Page 13

City of Long Beach

Sanitary Sewer R/W

NO 10548

M.B. 174-15-23

132

130

128

126

124

122

120

118

116

114

112

110

108

106

104

102

100

98

96

94

92

90

88

86

84

82

80

78

76

74

72

70

68

66

64

62

60

58

56

54

52

50

48

46

44

42

40

38

36

34

32

30

28

26

24

22

20

18

16

14

12

10

8

6

4

2

0

1

2

3

4

5

6

7

8

9

10

11

12

13

14

15

16

17

18

19

20

21

22

23

24

25

26

27

28

29

30

31

32

33

34

35

36

37

38

39

40

41

42

43

44

45

46

47

48

49

50

51

52

53

54

55

56

57

58

59

60

61

62

63

64

65

66

67

68

69

70

71

72

73

74

75

76

77

78

79

80

81

82

83

84

85

86

87

88

89

90

91

92

93

94

95

96

97

98

99

100

101

102

103

104

105

106

107

108

109

110

111

112

113

114

115

116

117

118

119

120

121

122

123

124

125

126

127

128

129

130

131

132

133

134

135

136

137

138

139

140

141

142

143

144

145

146

147

148

149

150

151

152

153

154

155

156

157

158

159

160

161

162

163

164

165

166

167

168

169

170

171

172

173

174

175

176

177

178

179

180

181

182

183

184

185

186

187

188

189

190

191

192

193

194

195

196

197

198

199

200

201

202

203

204

205

206

207

208

209

210

211

212

213

214

215

216

217

218

219

220

221

222

223

224

225

226

227

228

229

230

231

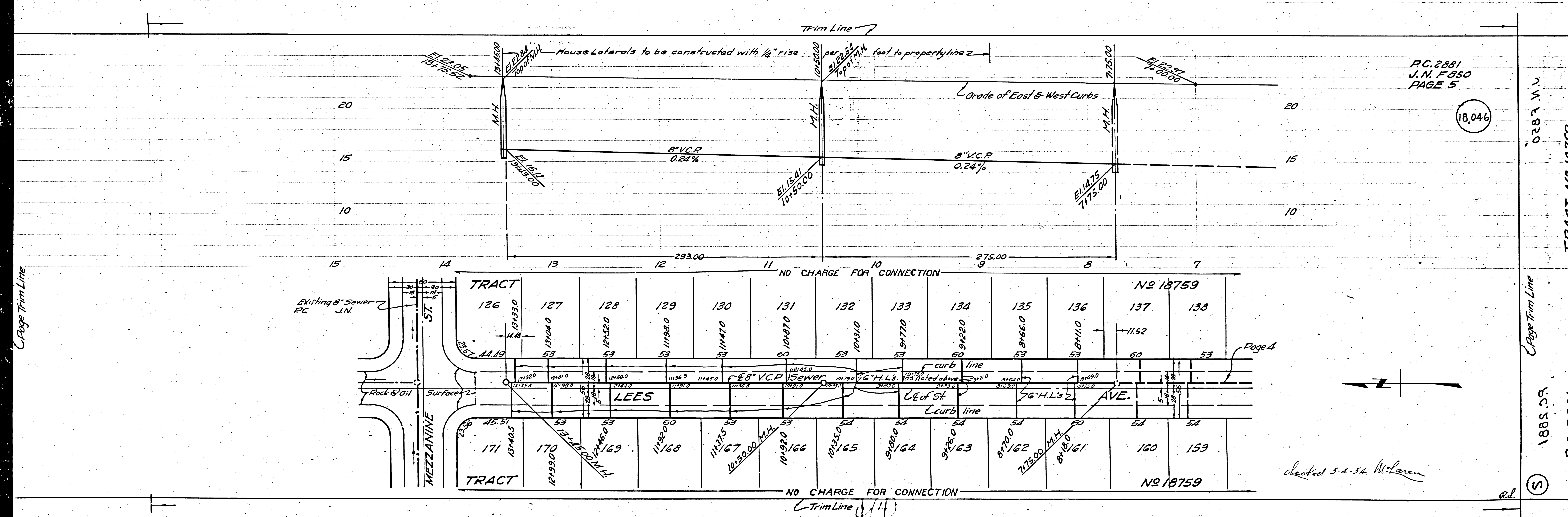
232

233

234

235

236



RC. 2881
J.N. F. 850
PAGE 5

18,046

0387 W.V

TRACT No 18759

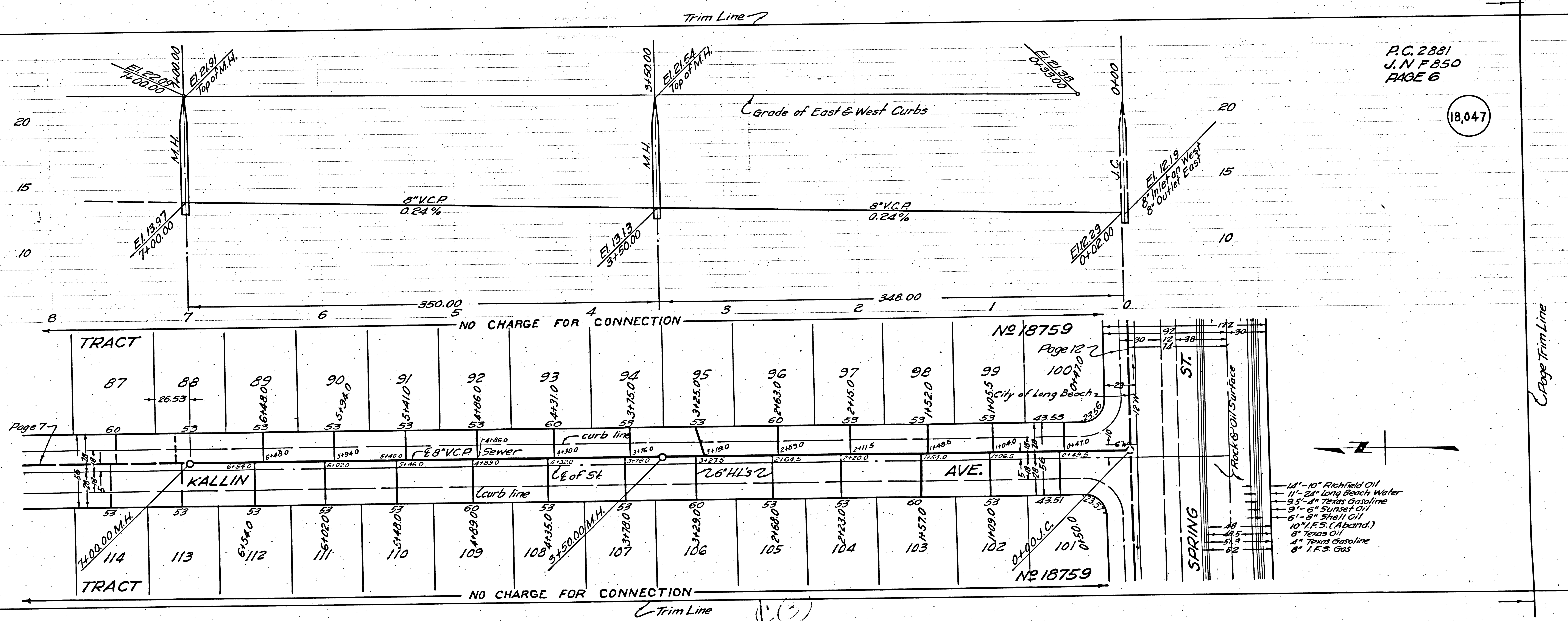
Page Trim Line

1885 D.F.

RC. 2881

checked 5-4-54. McFarren

ed (S)

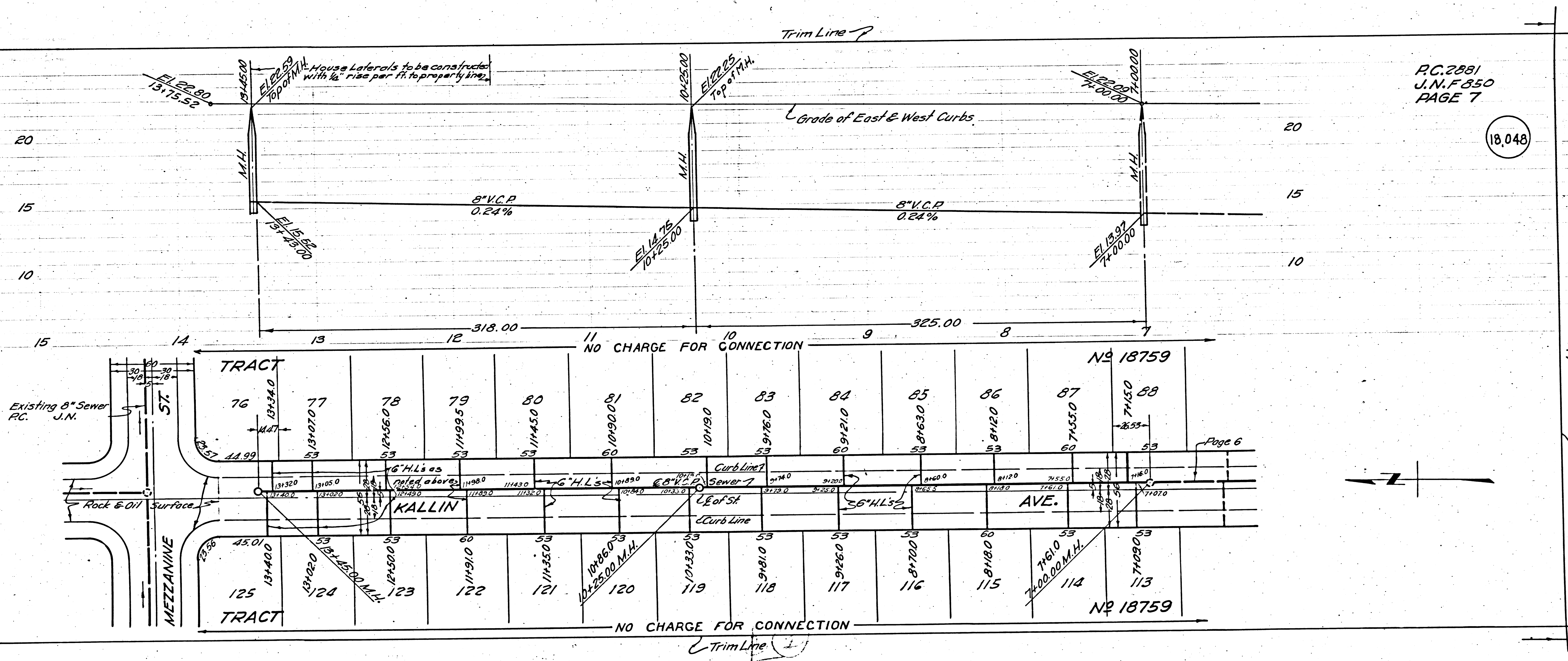


P.C. 2881
J.N.F. 850
PAGE 6

(18,047)

- 14"-10" Richfield Oil
- 11"-24" Long Beach Water
- 9.5"-4" Texas Gasline
- 9"-6" Sunset Oil
- 6"-8" Shell Oil
- 10" F.S. (Aband.)
- 8" Texas Oil
- 4" Texas Gasline
- 8" I.F.S. Gas

Page Trim Line



P.C. 2881
 J.N.F. 850
 PAGE 7

18.048

Page 6

Page Trim Line

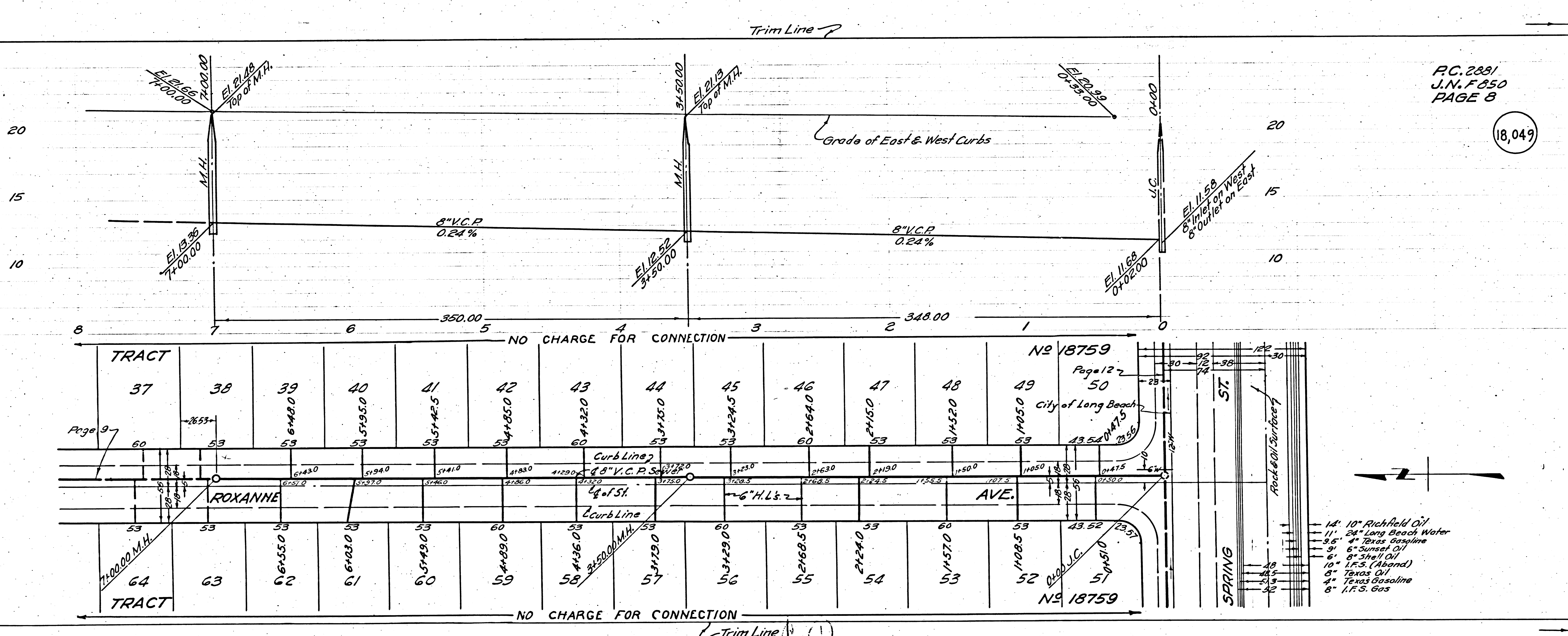
TRACT No 18759

P.C. 2881

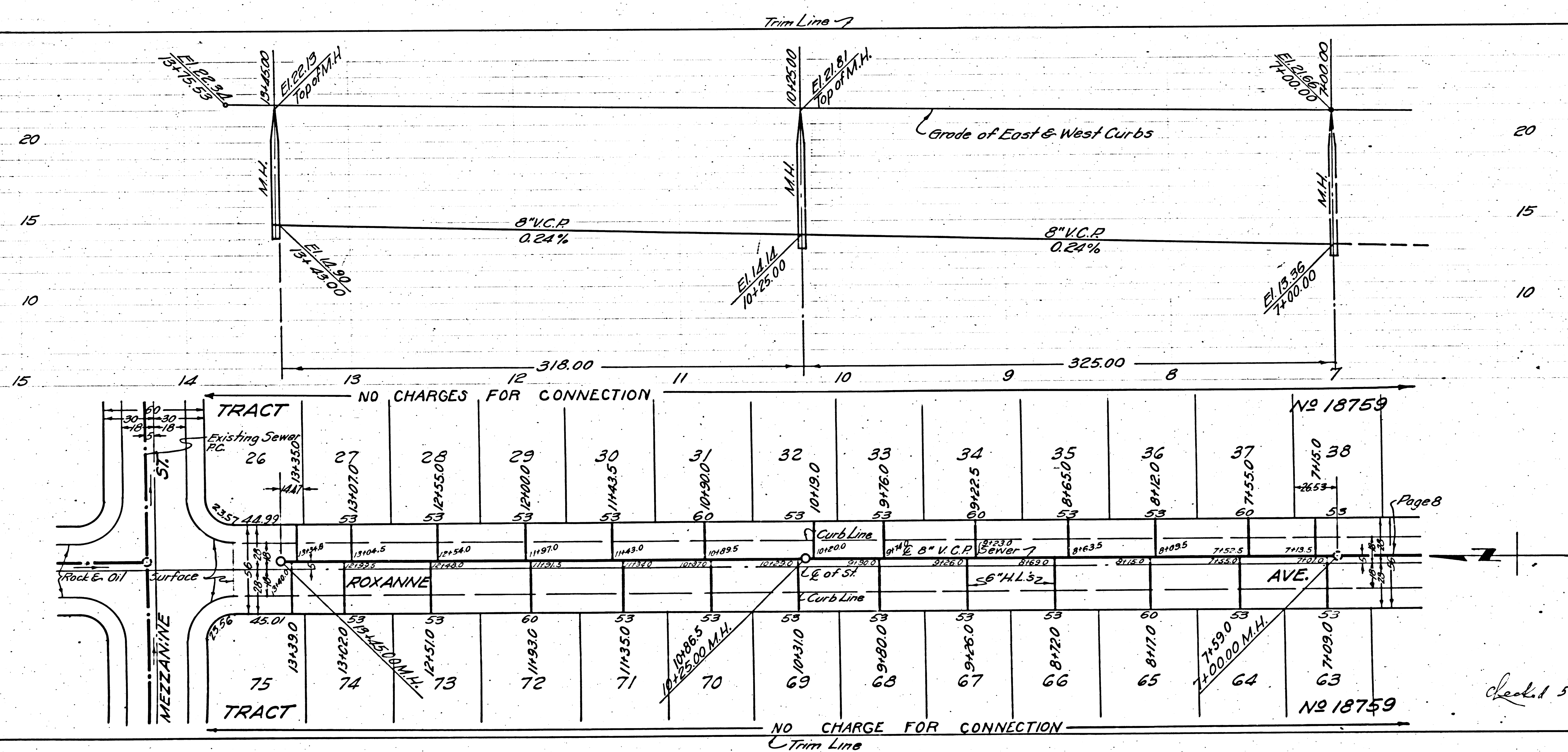
W.V.E. 820

P.C. 2881
J.N.F. 850
PAGE 8

18,049



- 14" 10" Richfield Oil
- 11" 24" Long Beach Water
- 9.5" 4" Texas Gasline
- 9" 6" Sunset Oil
- 6" Shell Oil
- 10" I.F.S. (Aband)
- 5" Texas Oil
- 4" Texas Gasline
- 8" I.F.S. Gas



PC 2881
J.N.F 850
PAGE 9

18,050

TRACT No 18759
TRACT No 18859

Checked 5-4-54 W. J. [Signature]

Rel. (E)

Edge Trim Line

Edge Trim Line

NO CHARGES FOR CONNECTION

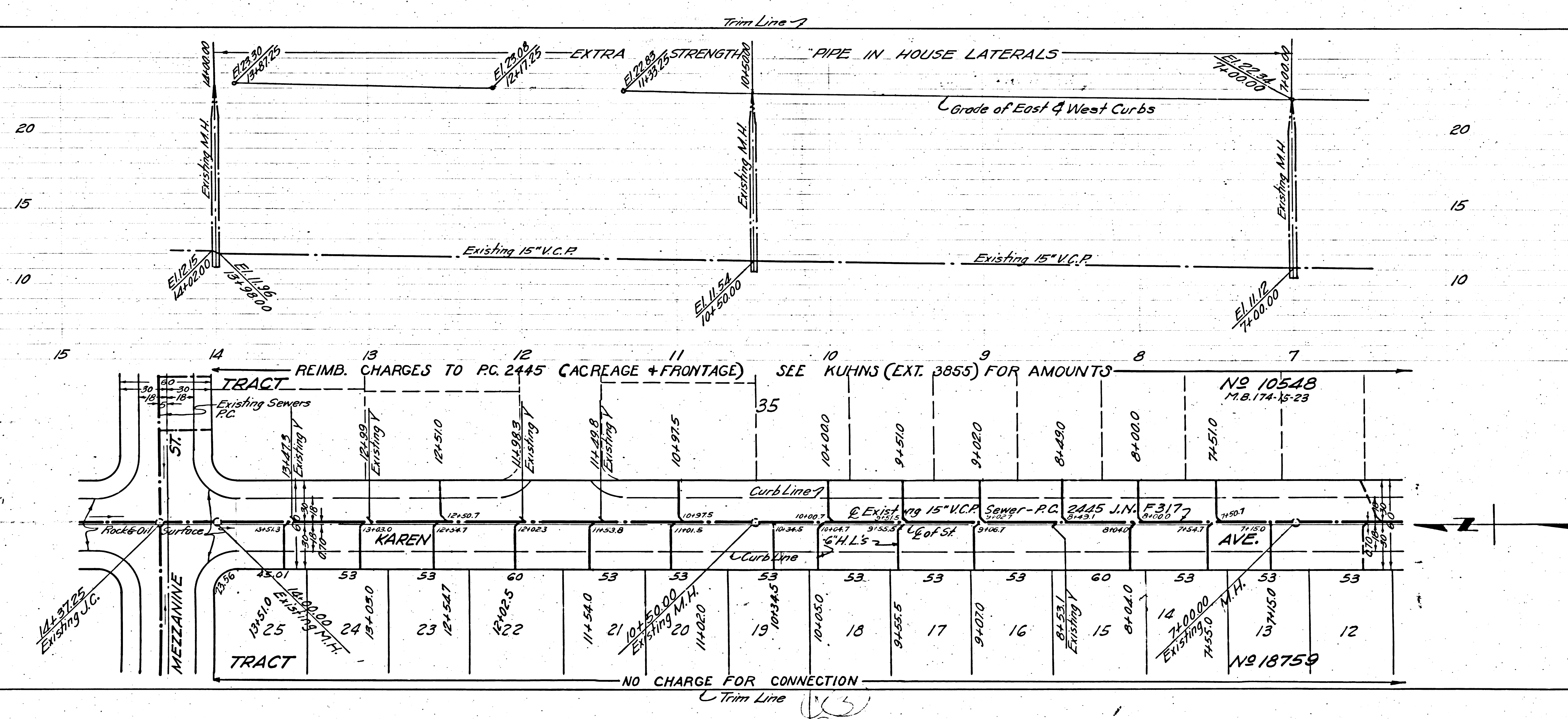
NO CHARGE FOR CONNECTION

Page 8

26	27	28	29	30	31	32	33	34	35	36	37	38
131330	131400	131450	131500	131550	131600	131650	131700	131750	131800	131850	131900	131950
75	74	73	72	71	70	69	68	67	66	65	64	63

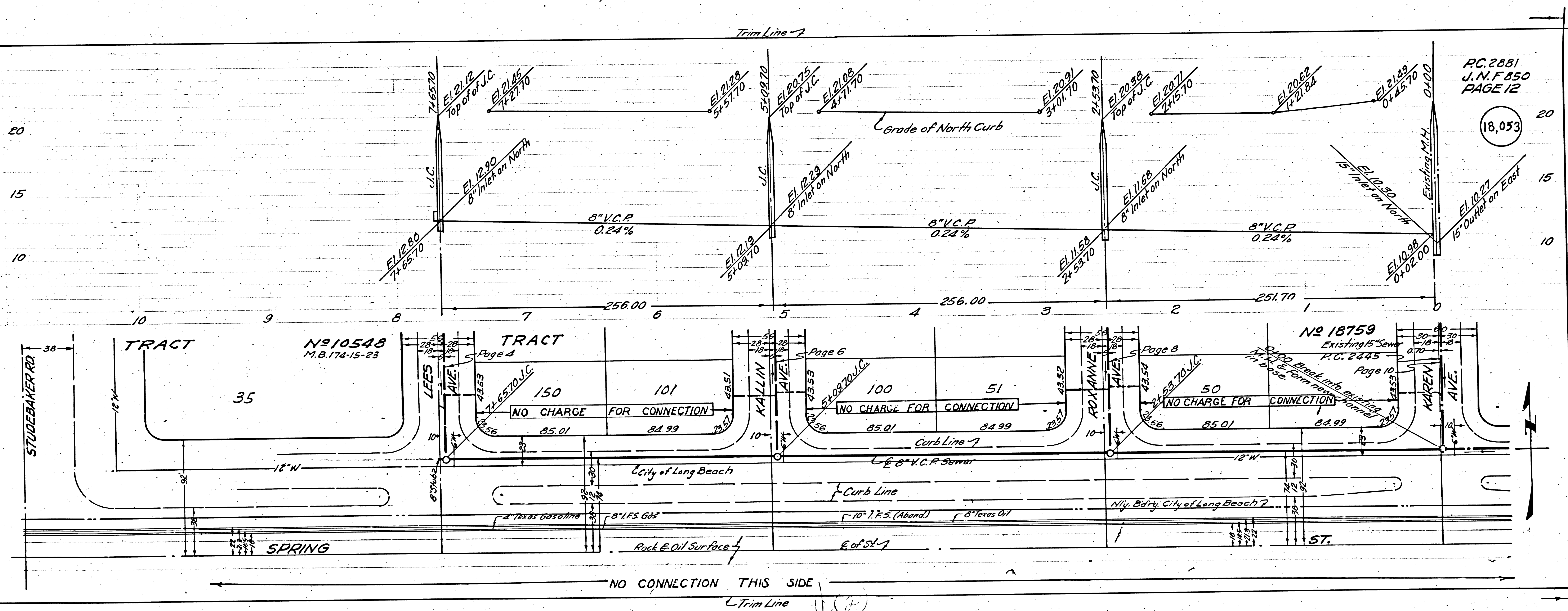
PC 2881
J.N.F 850
PAGE 11

18,052



C/Edge Trim Line

C/Edge Trim Line



PC. 2881
J.N.F. 850
PAGE 12

18,053

TRACT
No 10548
M.B. 174-15-23

TRACT
Page 4

TRACT
Page 6

No 18759
Existing 15" Sewer
P.C. 2445

STUDEBAKER RD

LEES AVE

KALLIN AVE

ROXANNE AVE

KAREN AVE

SPRING

NO CONNECTION THIS SIDE

Trim Line

Page Trim Line

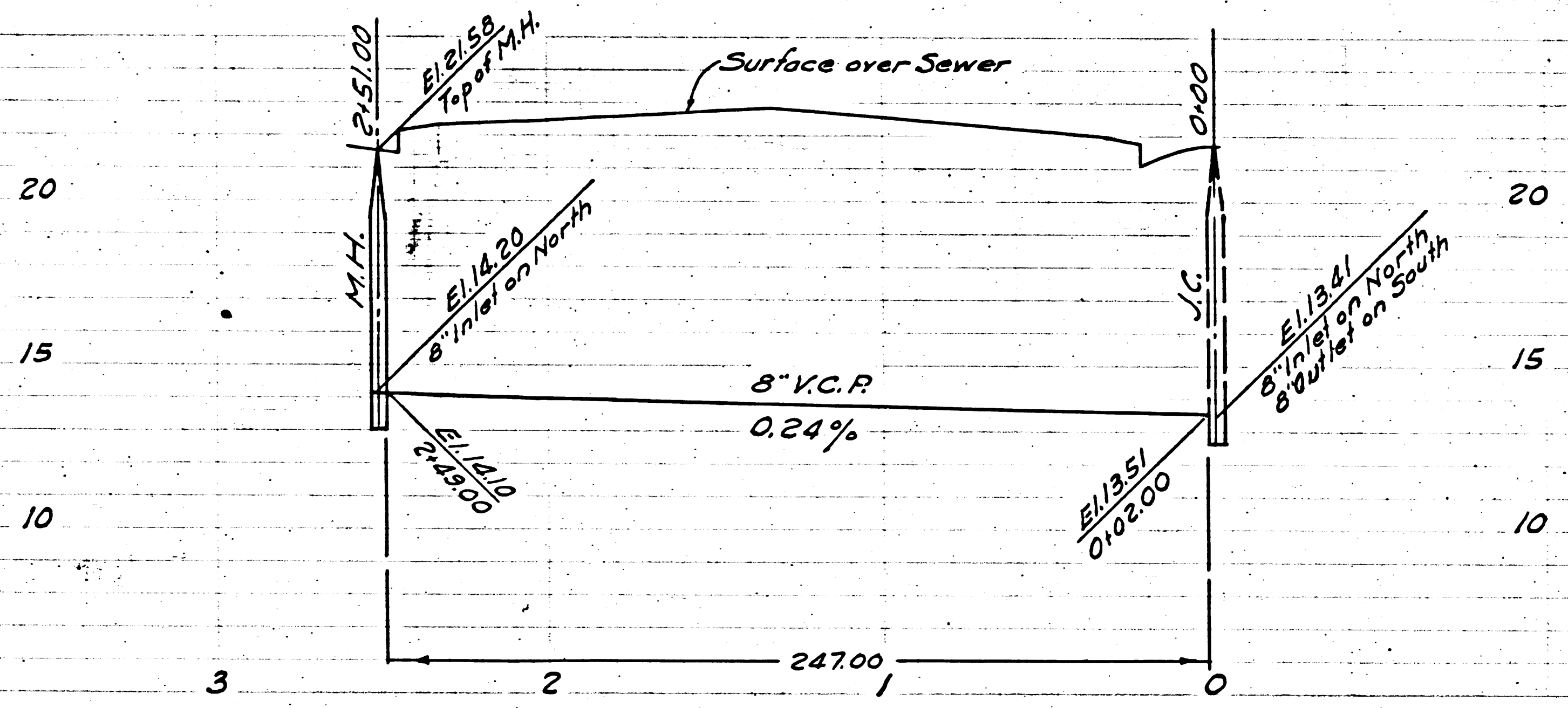
3

TRACT N^o 18759

PG. 2881

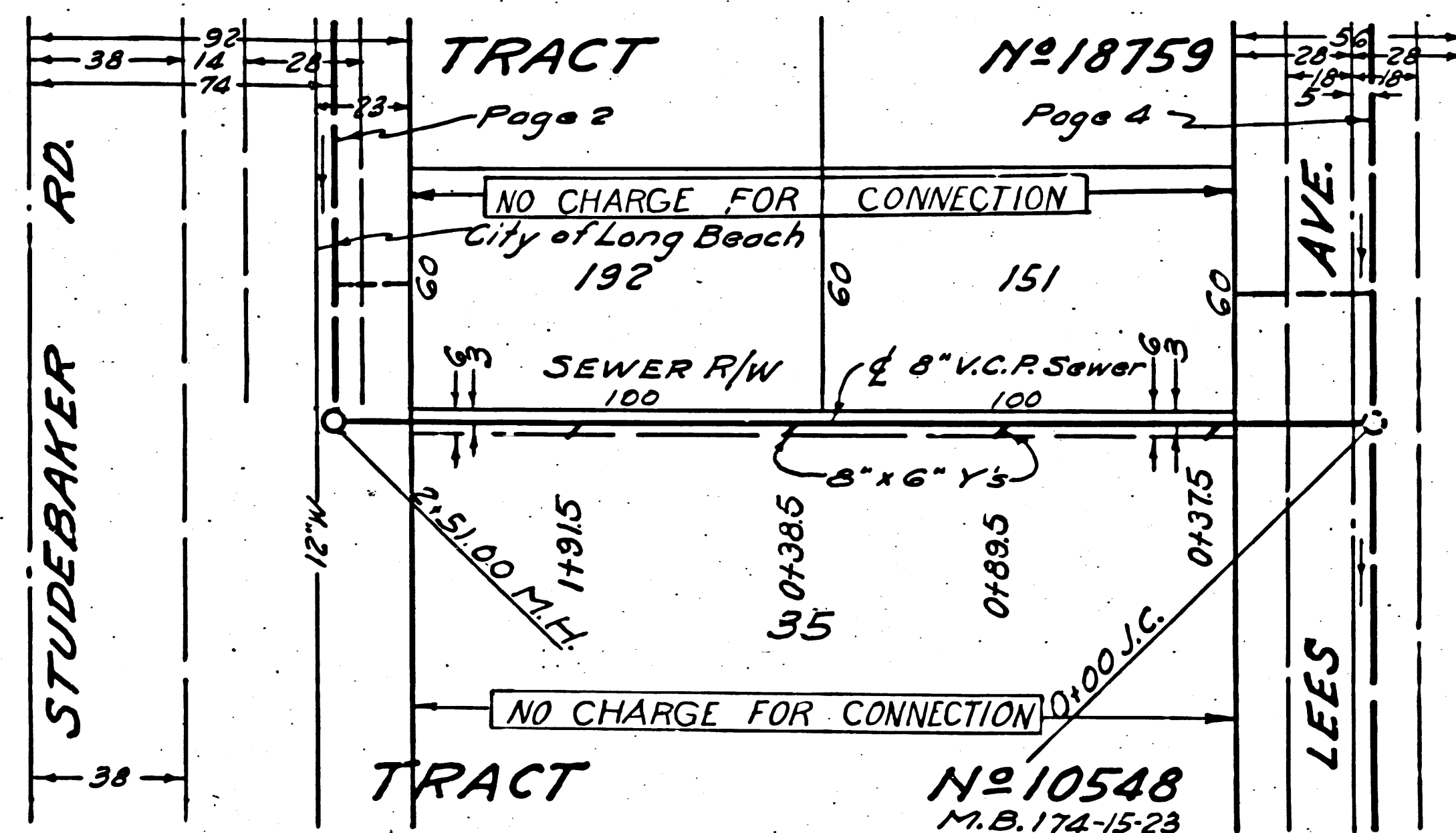
N^o 18759

Trim Line



PG. 2881
J.N. F. 850
PAGE 13

18,054



Trim Line

Page Trim Line

STUDEBAKER RD

LEES AVE