

Trim Line SHT 1 of 1

P.C. 2886  
J.N. F855  
Page 1  
J.N. 0970.02

18,265

### PALMDALE BLDG. DIST. No 8P

- NOTE:**  
Provide stakes on the property lines or property lines produced at right angles to the sewer line at the center line of each manhole.  
No representative of the County Engineer will survey or layout any portion of the work. The owner or his authorized representative shall furnish the County Engineer with grade sheets and stations for all house laterals and Y branches and shall provide stakes for them at their proper locations with stationing plainly marked. Any change in location shall be requested in writing by the owner or his representative.  
No revisions shall be made in these plans without the approval of the County Engineer.
1. Use standard manhole frames and covers, S-a-117.
  2. Use standard strength pipe except as noted.
  3. Use cement mortar for all vitrified clay pipe joints.
  4. Resurface all trench within paved area to meet L.A. County Road Dept. or Calif. State Highway Dept. requirements in accordance with permit.
  5. Encase four feet of sewer at points of interference with poles, S-a-119.
  6. House laterals to be constructed as shown in plan.
  7. All structures shall be brick sewer structures, S-a-104.
  8. Manhole tops in unimproved Rights-Of-Way to be 6" above finish grade.
  9. For allowable leakage test, use Formula No. ...., Spec's., Sec. 51.
  10. Wire & tags not required.

B.M. #1-Lead & Jack near end of curb  
Cor. of Q8 & 10th Street East  
Angeles Co. L.B. 624-5, Elev. 2645.405

### PROFILE, ALIGNMENT AND GRADE OF SANITARY SEWERS TO BE CONSTRUCTED IN

### 20th STREET EAST

PRIVATE CONTRACT NO. 2886  
W. S. 65

SHEET 1 OF 1 SHEET

Scale: VERT. 1"=4'  
HORIZ. 1"=40' DEC. 1953

PREPARED IN THE OFFICES OF

By A. Paulter Reg. C. E. No. 5551  
FOR LEGEND SEE PLAN NO. S-a-64

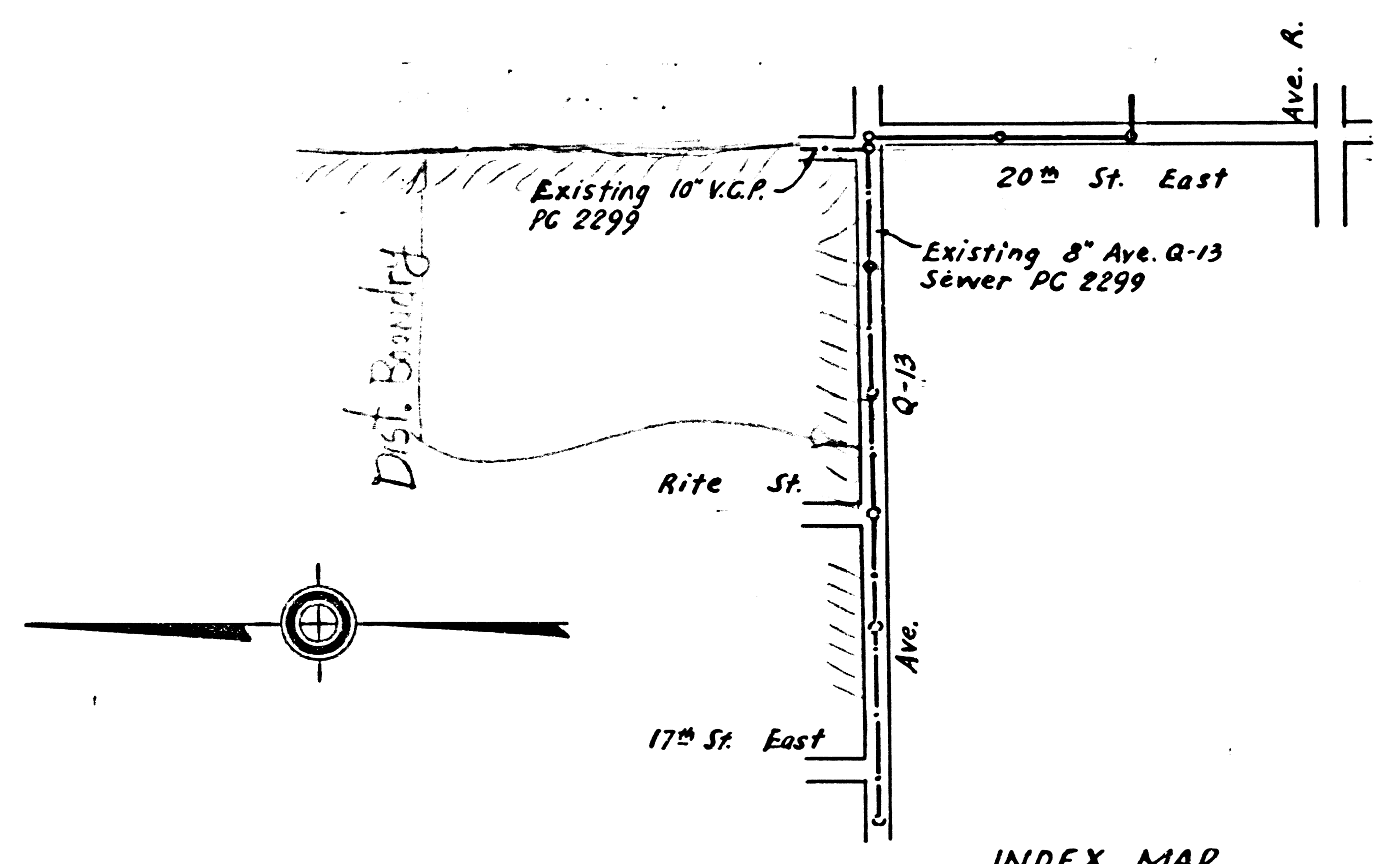
(2)

**NOTE:**  
Grades to which this improvement is to be constructed are shown on plans and profiles. Grade points for top of curbs, center line of streets, or center line of alleys are shown by circles on profiles. At all points between designated points the grade shall be established so as to conform to a straight line drawn between said designated points.  
Elevations are in feet above U.S.G.S. datum or mean sea level.  
This drawing and the data hereon are hereby made a part of the specifications.  
Work shall be constructed according to specifications on file in the office of the County Engineer and shall be prosecuted only in the presence of the County Engineer.  
Before work can be started, the contractor must obtain a permit to excavate in County streets from the L.A. County Road Dept., 108 W. 2nd St. and make a deposit with the County Engineer, 733 L.A. County Engineering Building, sufficient to cover the cost of construction inspection and record plans.  
Approval of this plan by the County of Los Angeles does not constitute a representation as to the accuracy of the location of or the existence or non-existence of any underground utility, pipe, or structure within the limits of this project. This note applies to all sheets.  
If work is to be done in a State Highway, a permit must be obtained from the State of California, Division of Highways, 120 South Spring Street.

### COUNTY OF LOS ANGELES, CALIFORNIA

Approved, William J. Fox, County Engineer  
Approved, A. M. Rawn  
CHIEF ENGR. CO. SAN. DIST. NO. 20  
By W. H. Hagarty Chief Deputy  
By George Posthumus Office Engineer  
Checked By: Richard E. Kuhn 12-10-53  
Office of County Engineer, Reg. C. E. No. 7860

checked 6-9-54 M. L. Green



INDEX MAP  
Scale: 1"=400'  
P.C. 2886 J.N. F855

Sheet	Pages
1	1-2

PC 2886

Trim Line

SHT 1 of 1

P.C. 2886  
J.N. F855  
Page 2

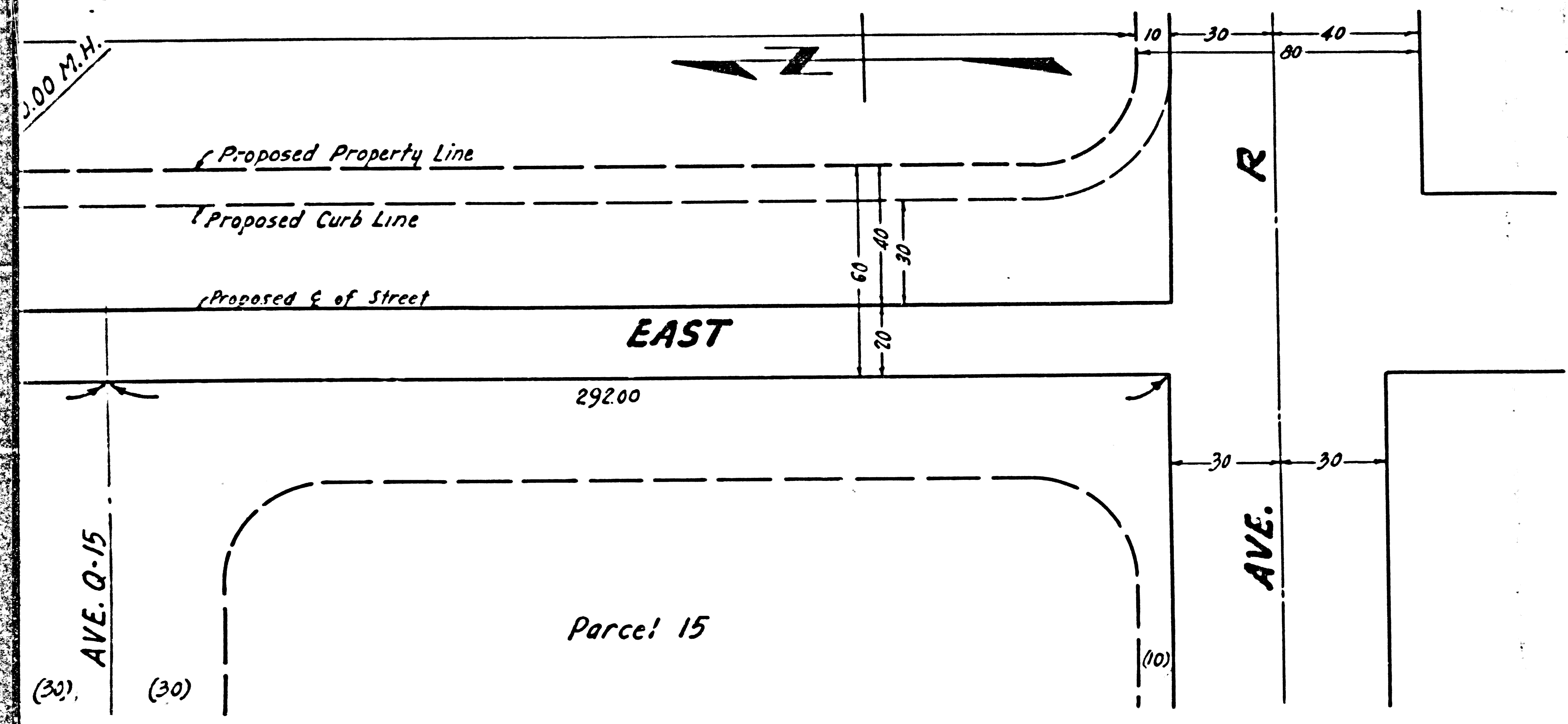
18,266

2615

2610

2605

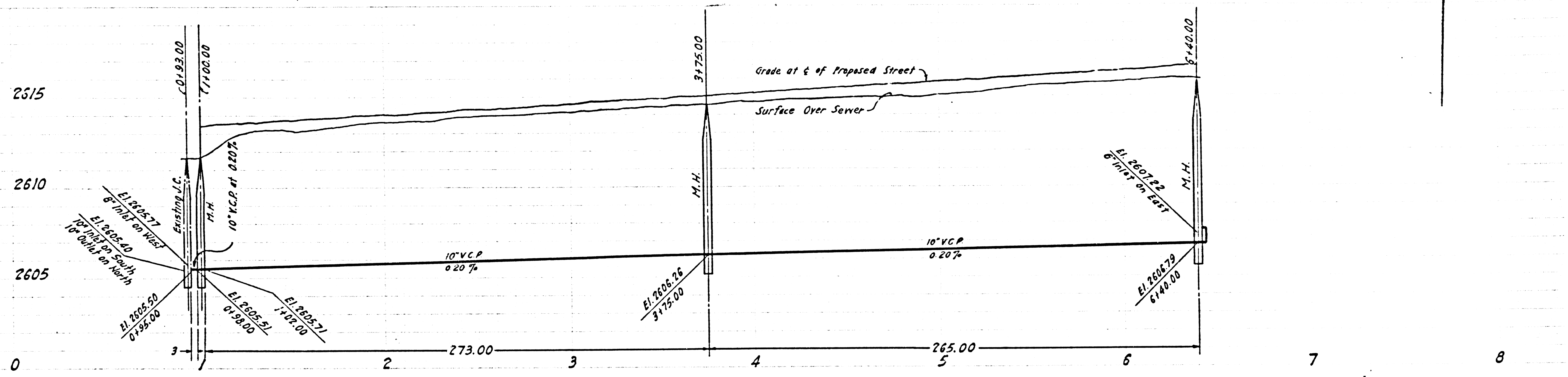
8



C.S.B.M.\*1-Lead & Tack near end  
S.W. Cor. of Q8 & 10th Street E  
Los Angeles Co. L.B. 624-5, Elev

Sheet	Pages
1	1-2

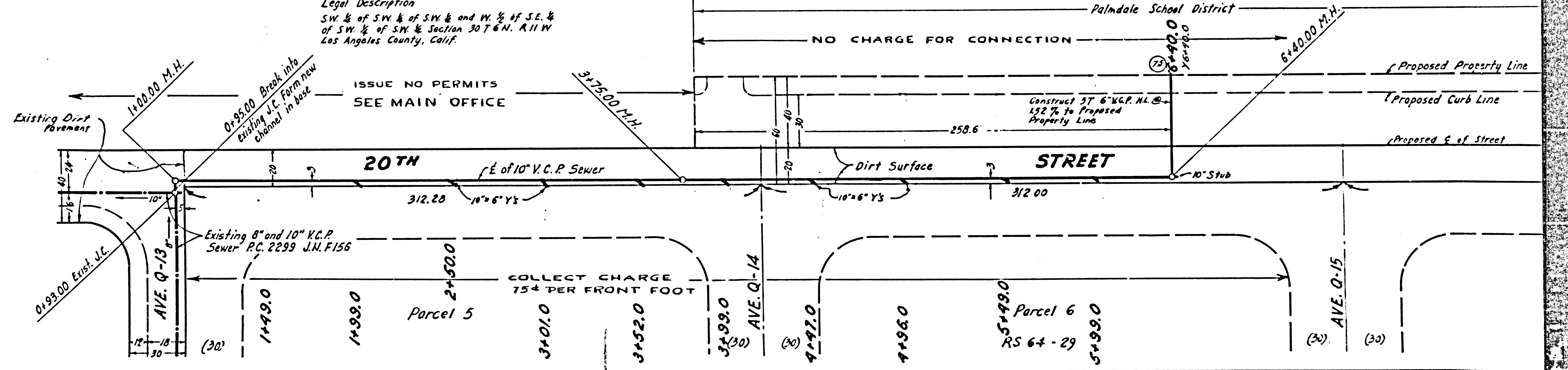
Trim Line



Legal Description  
 SW 1/4 of SW 1/4 of SW 1/4 and W 1/2 of SE 1/4  
 of SW 1/4 of SW 1/4 Section 30 T 6 N. R 11 W  
 Los Angeles County, Calif.

ISSUE NO PERMITS  
 SEE MAIN OFFICE

NO CHARGE FOR CONNECTION



COLLECT CHARGE  
 75¢ PER FRONT FOOT

Trim Line