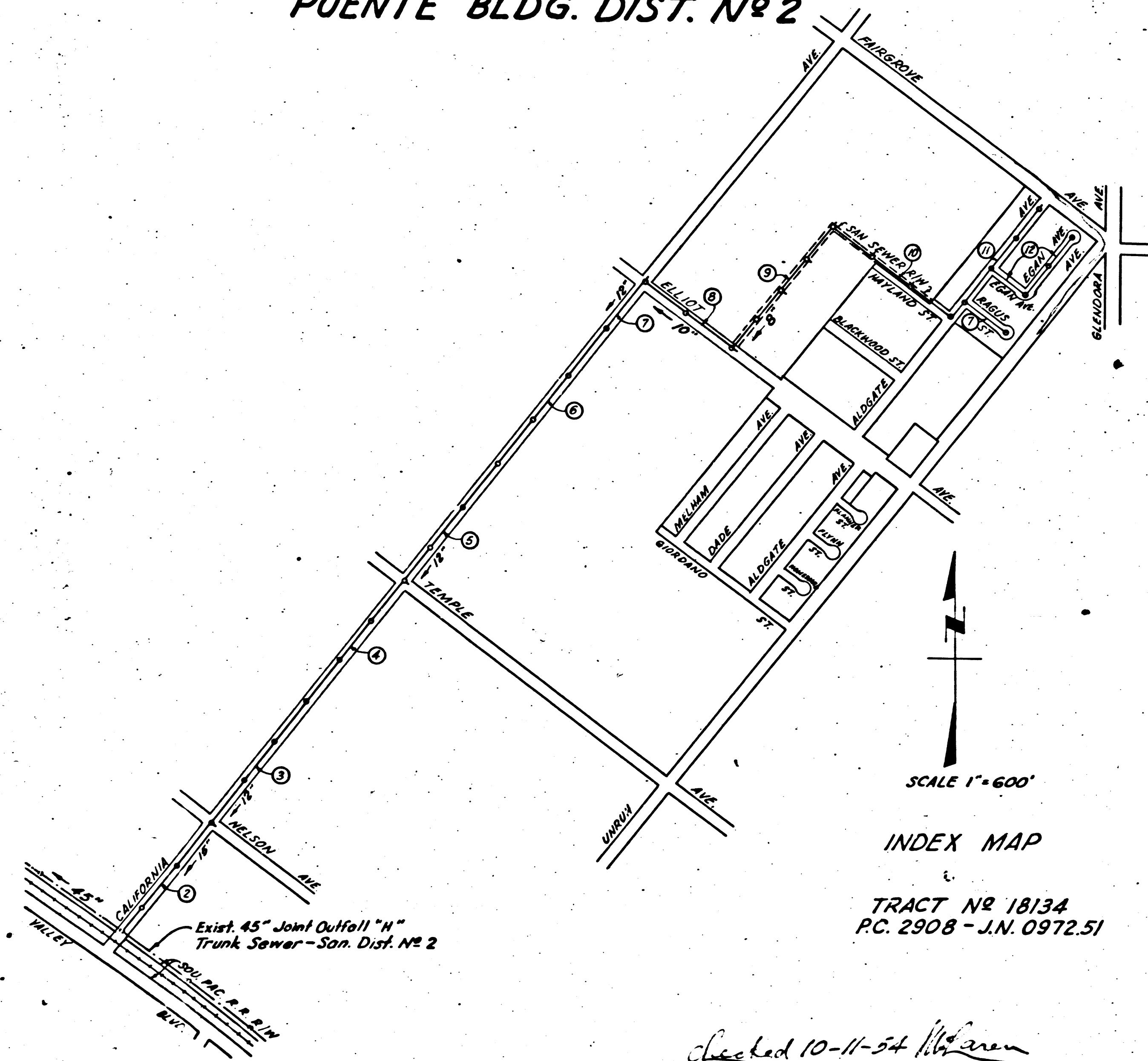


**PUENTE BLDG. DIST. NO 2**



SCALE 1" = 600'  
INDEX MAP  
TRACT NO 18134  
P.C. 2908 - J.N. 0972.51

Checked 10-11-54 *[Signature]*

- NOTE:**  
Provide stakes on the property lines or property lines produced at right angles to the sewer line at the center line of each manhole.  
No representative of the County Engineer will survey or layout any portion of the work. The owner or his authorized representative shall furnish the County Engineer with grade sheets and stations for all house laterals and Y branches and shall provide stakes for them at their proper locations with stationing plainly marked. Any change in location shall be requested in writing by the owner or his representative.  
No revisions shall be made in these plans without the approval of the County Engineer.
1. Use standard manhole frames and covers, S-a-117.
  2. Use standard strength pipe except as noted.
  3. Use cement mortar for all vitrified clay pipe joints.
  4. Resurface all trench within paved area to meet L.A. County Road Dept. or Calif. State Highway Dept. requirements in accordance with permit.
  5. Encase four feet of sewer at points of interference with poles, S-a-119.
  6. House laterals to be constructed with inverts at property line.....feet below curb grade except as noted.
  7. All structures shall be brick sewer structures, S-a-104, except as noted.
  8. Manhole tops in unimproved Rights-Of-Way to be 6" above finish grade.
  9. For allowable leakage test, use Formula No....., Specs., Sec. 51.

B.M., S.G 1010, El. 338.098, Lead & Bench nail in N.E. corner of conc. 3x5 weir box @ S.W. corner of Fairgrove Ave. & Unruh Ave. ± 25' South of E. of Fairgrove Ave. & ± 85' West of E. of Glendora Ave.

SHEETS	PAGES
1	1-4
2	5-8
3	9-12

Before breaking into any existing structure and before final acceptance of this work, County Sanitation District should be notified in order that continued inspection may be made.

**COLLECT CHARGES AS INDICATED**  
*[Signature]* 5-12-54

PROFILE, ALIGNMENT AND GRADE OF  
**SANITARY SEWERS**  
TO BE CONSTRUCTED IN  
**TRACT NO 18134**

P.C. 2908  
J.N. 0972.51  
PAGE 1

19,030

PRIVATE CONTRACT NO. 2908  
W. S. 38  
SHEET 1 OF 3 SHEETS  
Scale: VERT. 1" = 4'  
HORIZ. 1" = 40'  
MARCH 1954

PREPARED UNDER THE SUPERVISION OF  
*[Signature]*  
FOR LEGEND SEE PLAN NO. S-a-64

**NOTE:**  
Grades to which this improvement is to be constructed are shown on plans and profiles. Grade points for top of curbs, center line of streets, or center line of alleys are shown by circles or profiles. At all points between designated points the grade shall be established so as to conform to a straight line drawn between said designated points.  
Elevations are in feet above U.S.G.S. datum or mean sea level.  
This drawing and the data hereon are hereby made a part of the specifications.  
Work shall be constructed according to specifications on file in the office of the County Engineer and shall be prosecuted only in the presence of the County Engineer.  
Before work can be started, the contractor must obtain a permit to excavate in County streets from the L.A. County Road Dept., 108 W. 2nd St. and make a deposit with the County Engineer, 733 L.A. County Engineering Building, sufficient to cover the cost of construction inspection and record plans.  
Approval of this plan by the County of Los Angeles does not constitute a representation as to the accuracy of the location or the existence or non-existence of any underground utility, pipe, or structure within the limits of this project. This note applies to all sheets.  
If work is to be done in a State Highway, a permit must be obtained from the State of California, Division of Highways, 120 South Spring Street.

**COUNTY OF LOS ANGELES, CALIFORNIA**  
Approved, William J. Fox, County Engineer  
Approved, A. M. Rawn  
CHIEF ENGR. CO. SAN. DIST. NO. 18  
by *[Signature]* *[Signature]*  
Sanitation Engineer Office Engineer  
Checked by: *[Signature]* 5-12-54  
Office of County Engineer, Reg. C. E. No. 7860

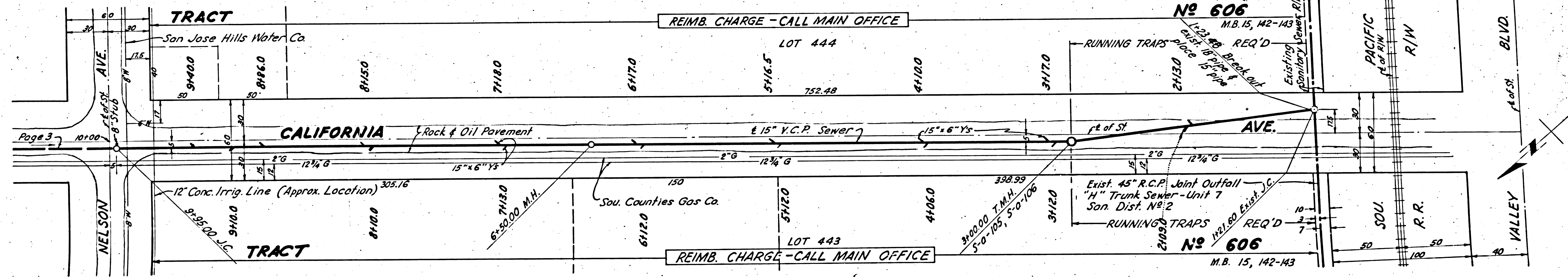
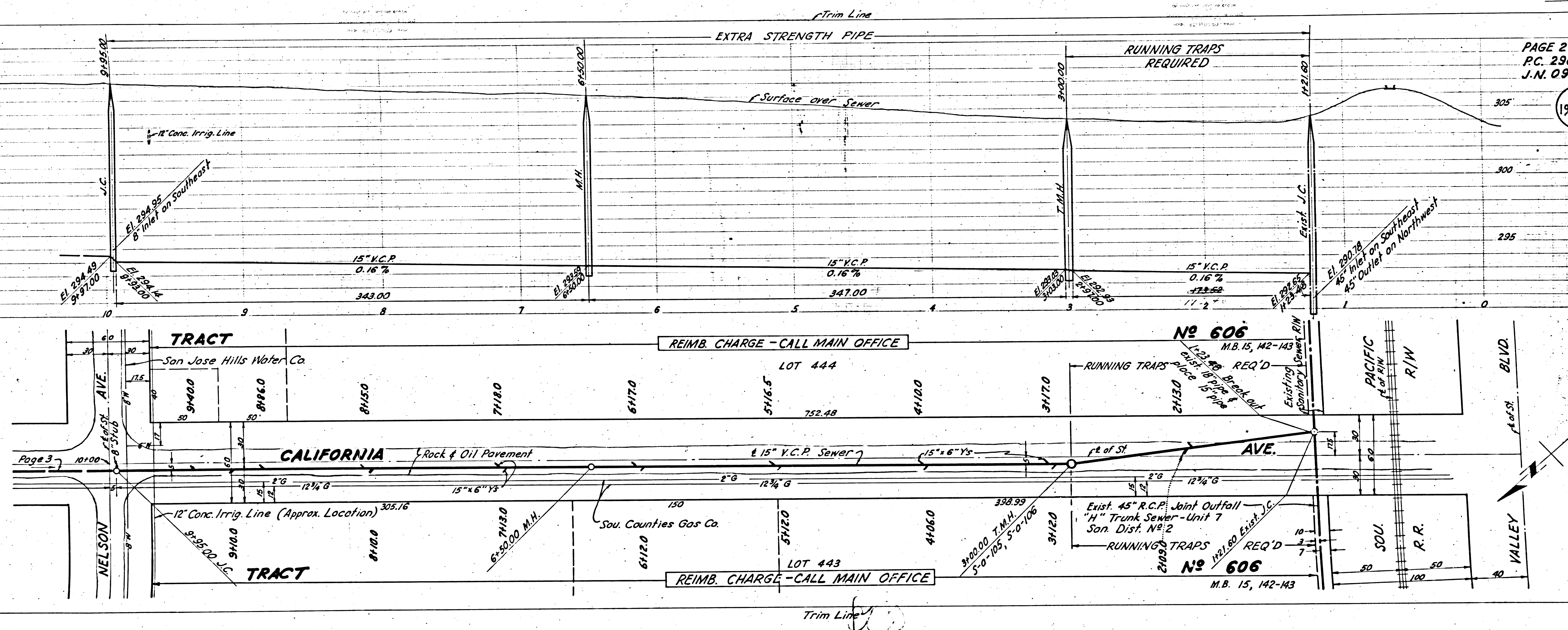
P.C. 2908  
TRACT NO 18134  
18130 W. UNRUH AVE.  
8095.59

008  
972.51

092

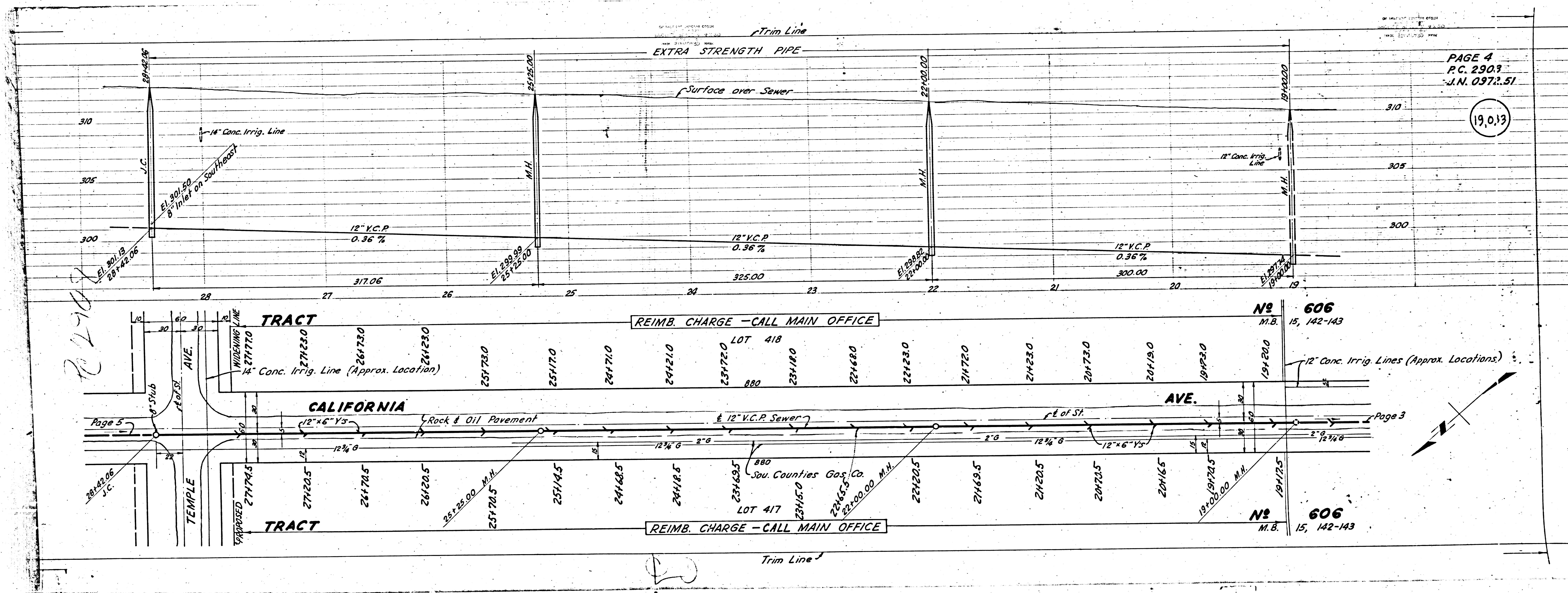
PAGE 2  
P.C. 2908  
J.N. 0972.51

19,031



Trim Line





PAGE 4  
 P.C. 290.7  
 J.N. 0973.51

19,013

No 606  
 M.B. 15, 142-143

No 606  
 M.B. 15, 142-143

20172  
 20172

Page 3

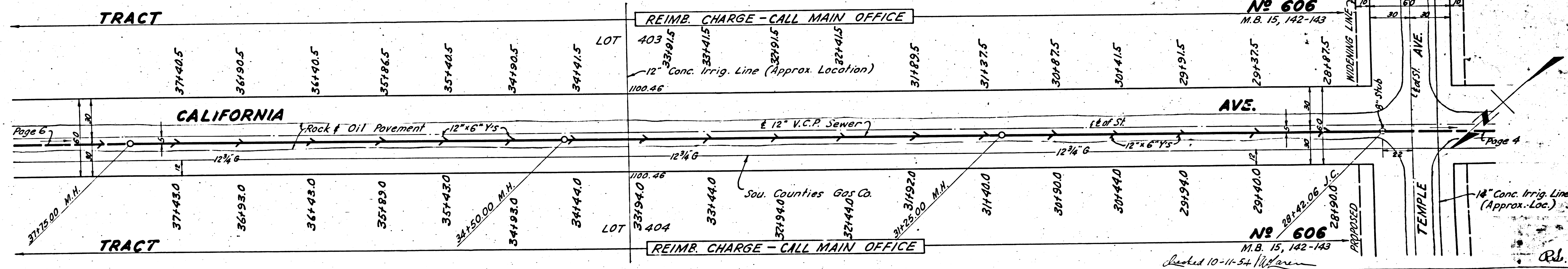
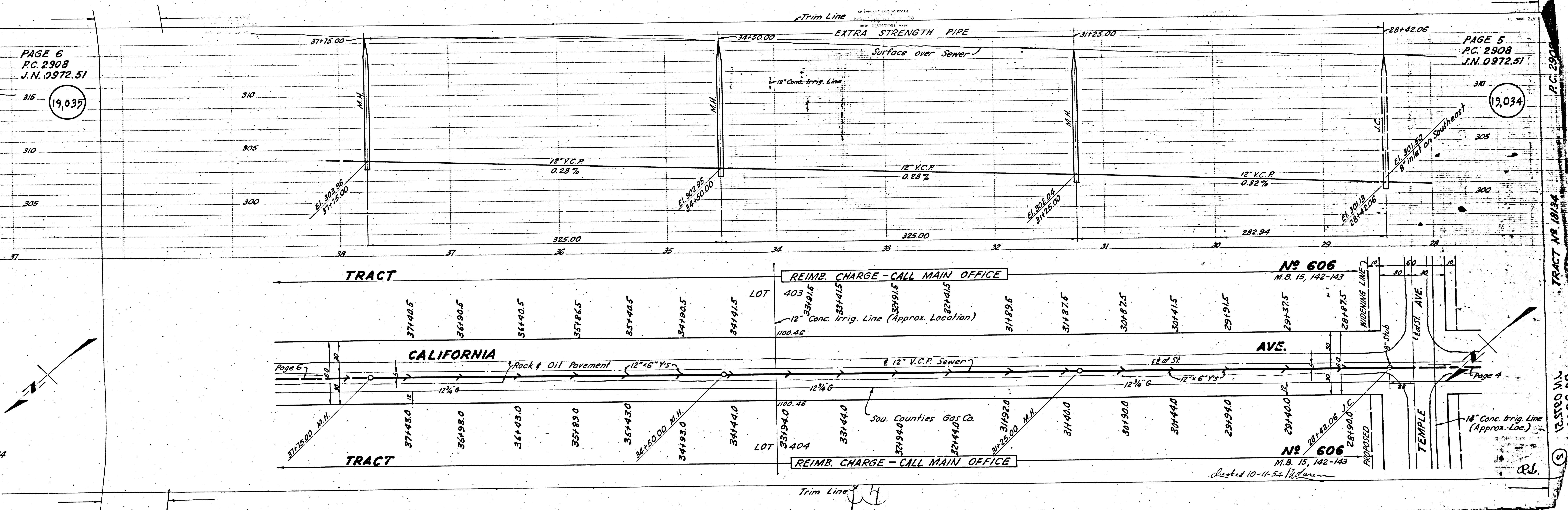
Page 3

PAGE 6  
P.C. 2908  
J.N. 0972.51

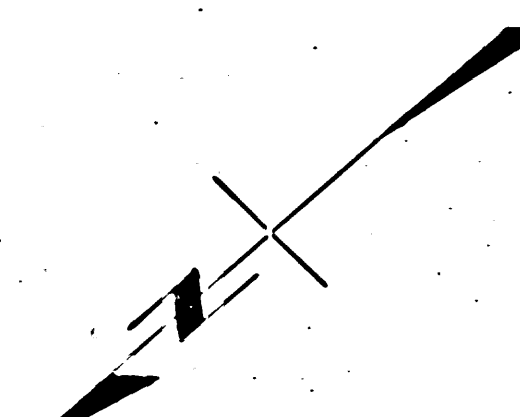
19,035

PAGE 5  
P.C. 2908  
J.N. 0972.51

19,034



PAGE 5  
P.C. 2908  
J.N. 0972.51  
TRACT NO 18134  
P.C. 2908  
J.N. 0972.51



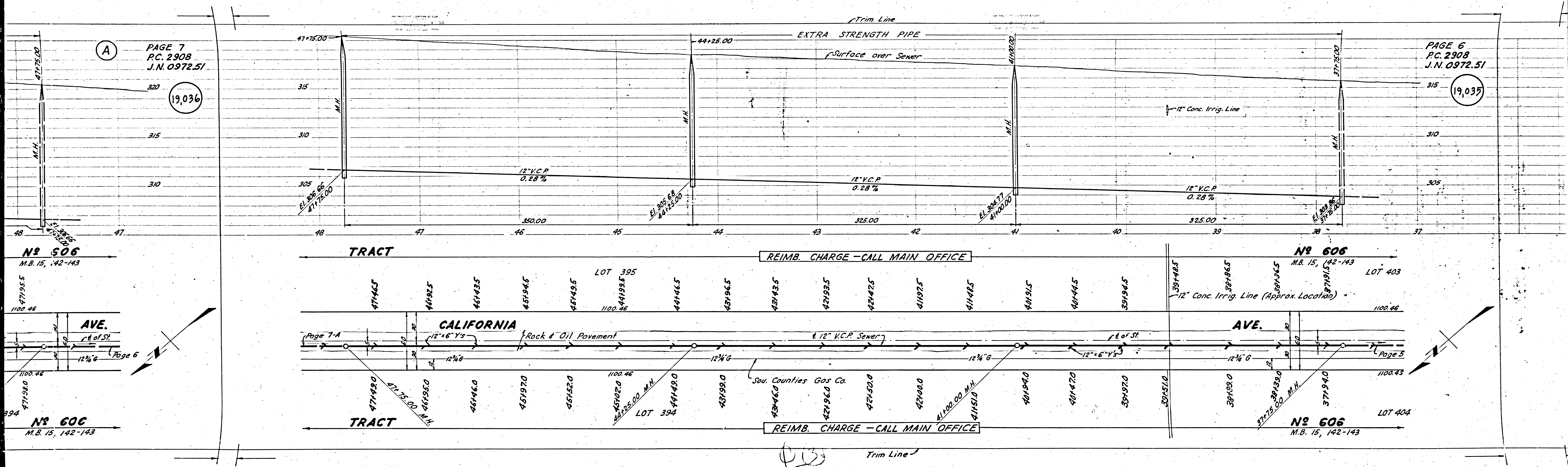
Drafted 10-11-54 W. H. Warren

PAGE 7  
P.C. 2908  
J.N. 0972.51

(19,036)

PAGE 6  
P.C. 2908  
J.N. 0972.51

(19,035)



№ 506  
M.B. 15, 142-143

№ 606  
M.B. 15, 142-143

AVE.  
E of St.

AVE.  
E of St.

№ 606  
M.B. 15, 142-143

№ 606  
M.B. 15, 142-143

TRACT

REIMB. CHARGE - CALL MAIN OFFICE

TRACT

REIMB. CHARGE - CALL MAIN OFFICE

CALIFORNIA  
Rock & Oil Pavement

Sou. Counties Gas Co.

Trim Line

471955  
1100.46

371915  
1100.46

471980  
471985  
461985  
461980  
451970  
451975  
441965  
441970  
431960  
431965  
421955  
421960  
411950  
411955  
401945  
391940  
381935  
371930

371915  
381915  
391915  
401915  
411915  
421915  
431915  
441915  
451915  
461915  
471915

471980  
471985  
461985  
461980  
451970  
451975  
441965  
441970  
431960  
431965  
421955  
421960  
411950  
411955  
401945  
391940  
381935  
371930

371915  
381915  
391915  
401915  
411915  
421915  
431915  
441915  
451915  
461915  
471915

471980  
471985  
461985  
461980  
451970  
451975  
441965  
441970  
431960  
431965  
421955  
421960  
411950  
411955  
401945  
391940  
381935  
371930

371915  
381915  
391915  
401915  
411915  
421915  
431915  
441915  
451915  
461915  
471915





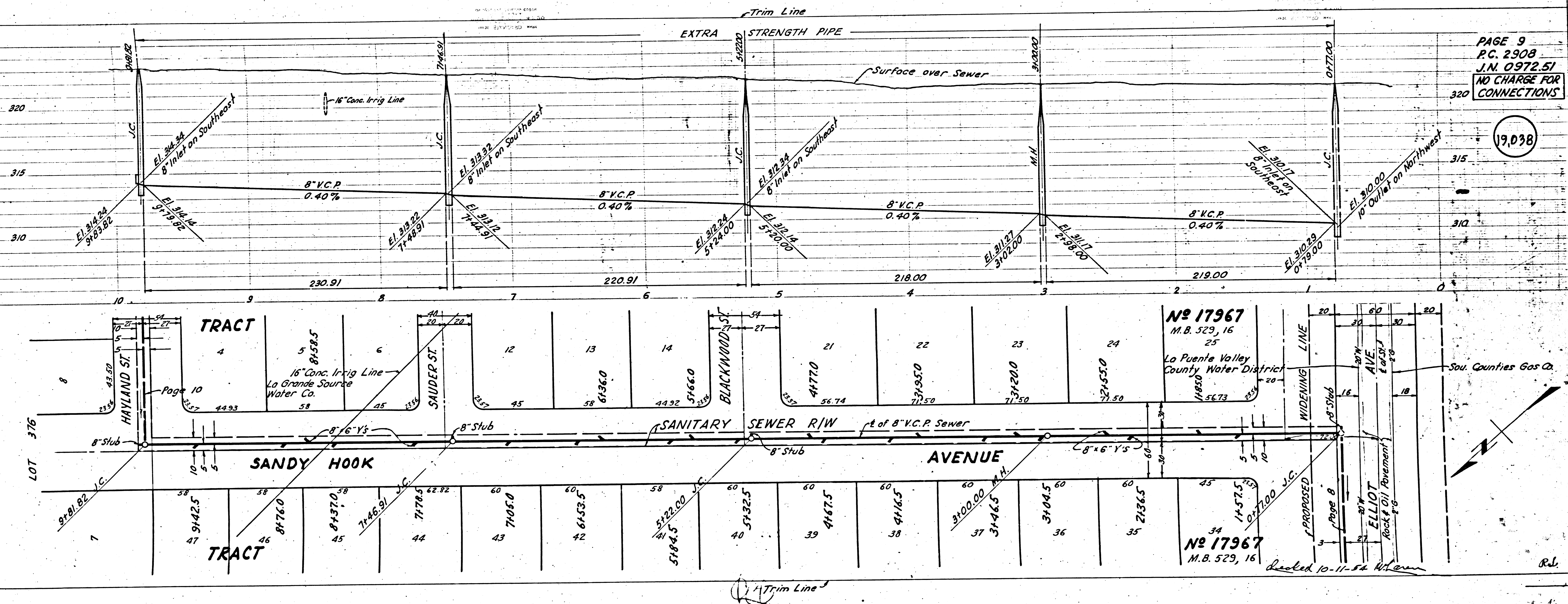


PAGE 10  
P.C. 2908  
J.N. 0972.51

19,039

PAGE 9  
P.C. 2908  
J.N. 0972.51  
NO CHARGE FOR  
CONNECTIONS

19,038



R.L.

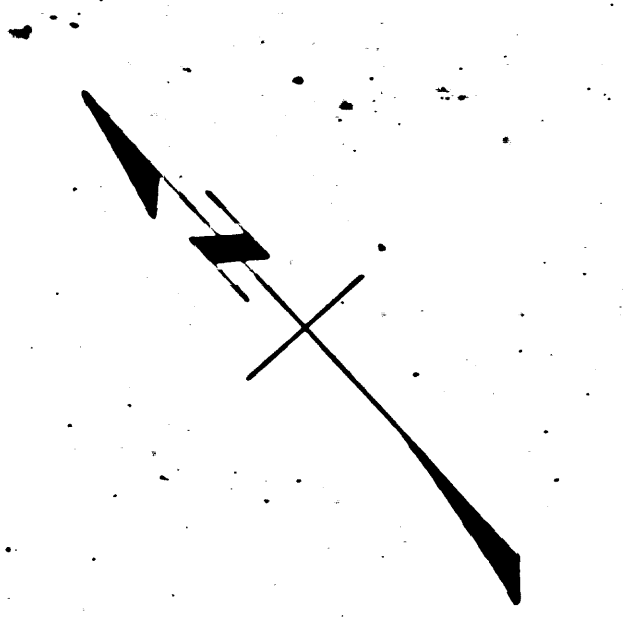
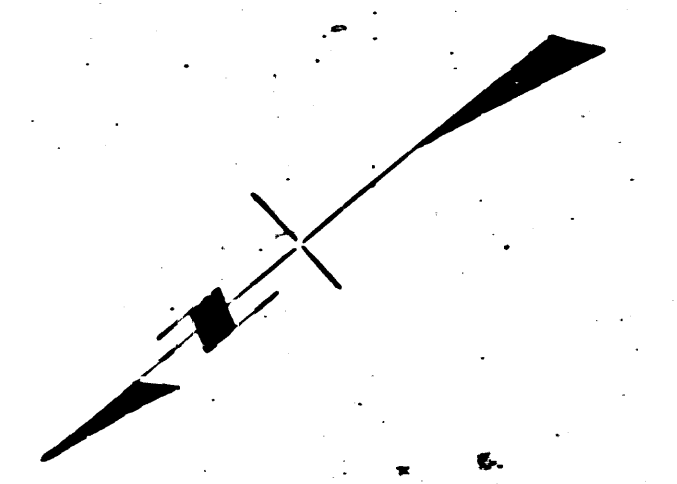
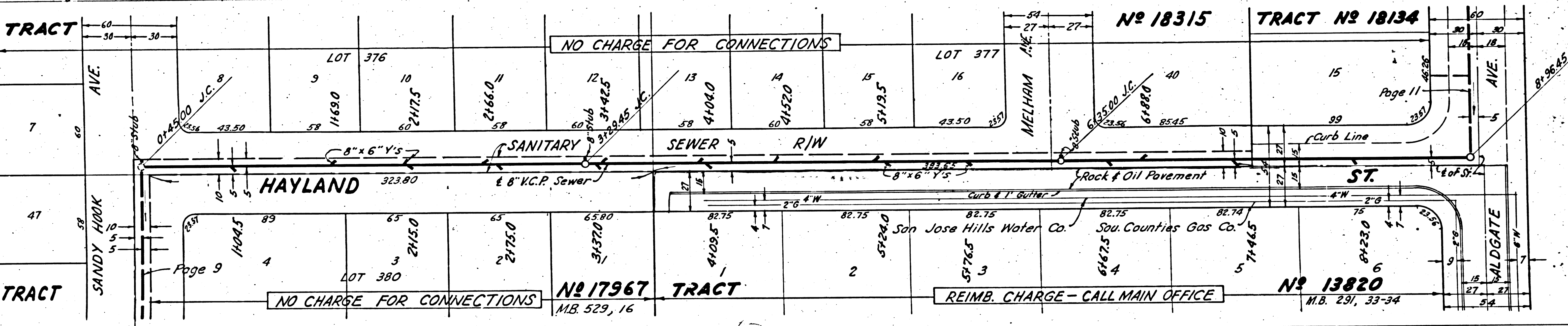
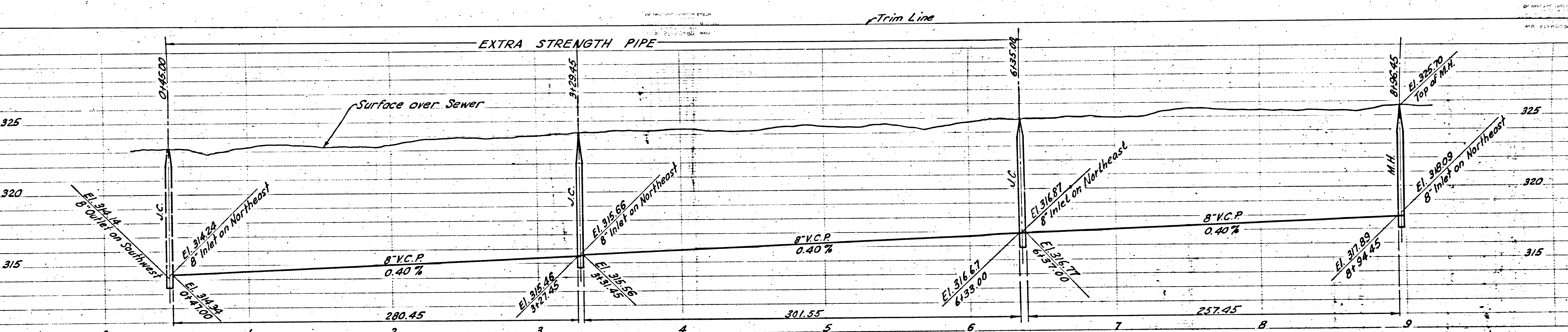
PAGE 11  
P.C. 2908  
J.N. 0972.51

NO CHARGE FOR CONNECTIONS

19,040

PAGE 10  
P.C. 2908  
J.N. 0972.51

19,039



19,040

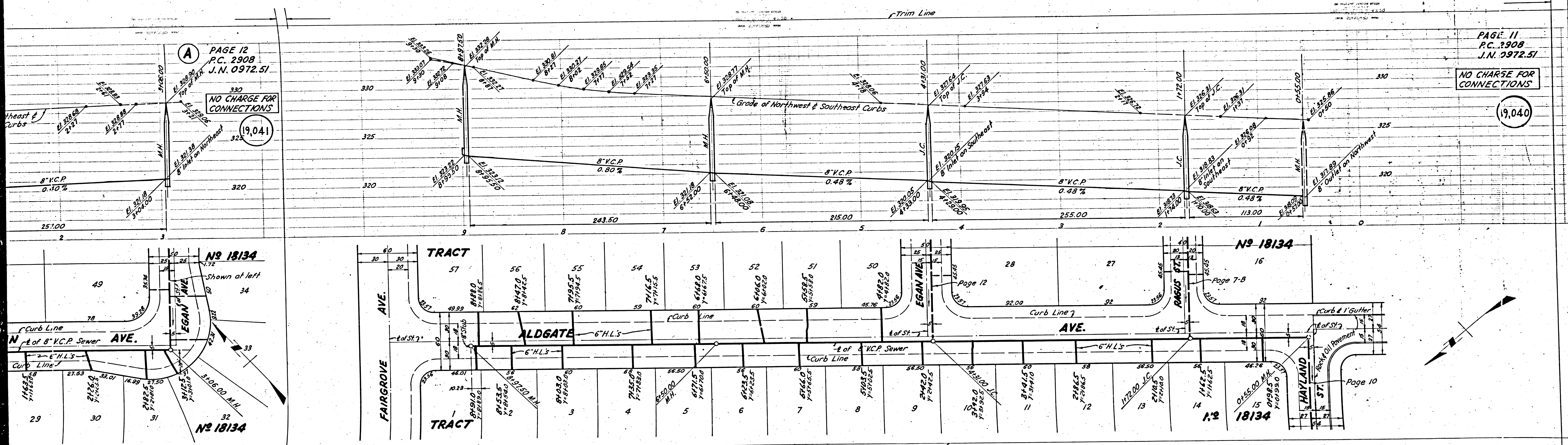
Trim Line

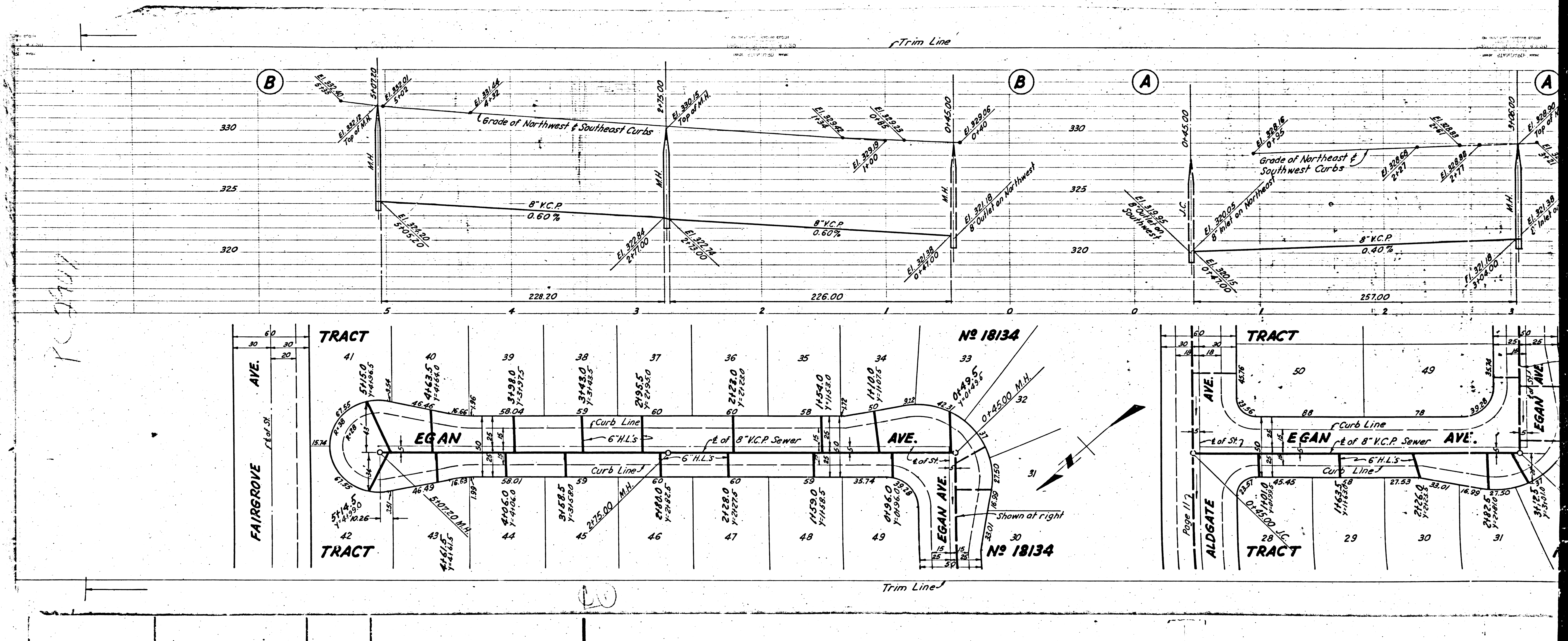
PAGE 12  
P.C. 2908  
J.N. 0972.51

NO CHARGE FOR CONNECTIONS  
(19,041)

PAGE 11  
P.C. 2908  
J.N. 0972.51

NO CHARGE FOR CONNECTIONS  
(19,040)





PC 117

20

Page 117