

PC 2911
J.N. 0972.91
Page 2
Double Scale

18,992

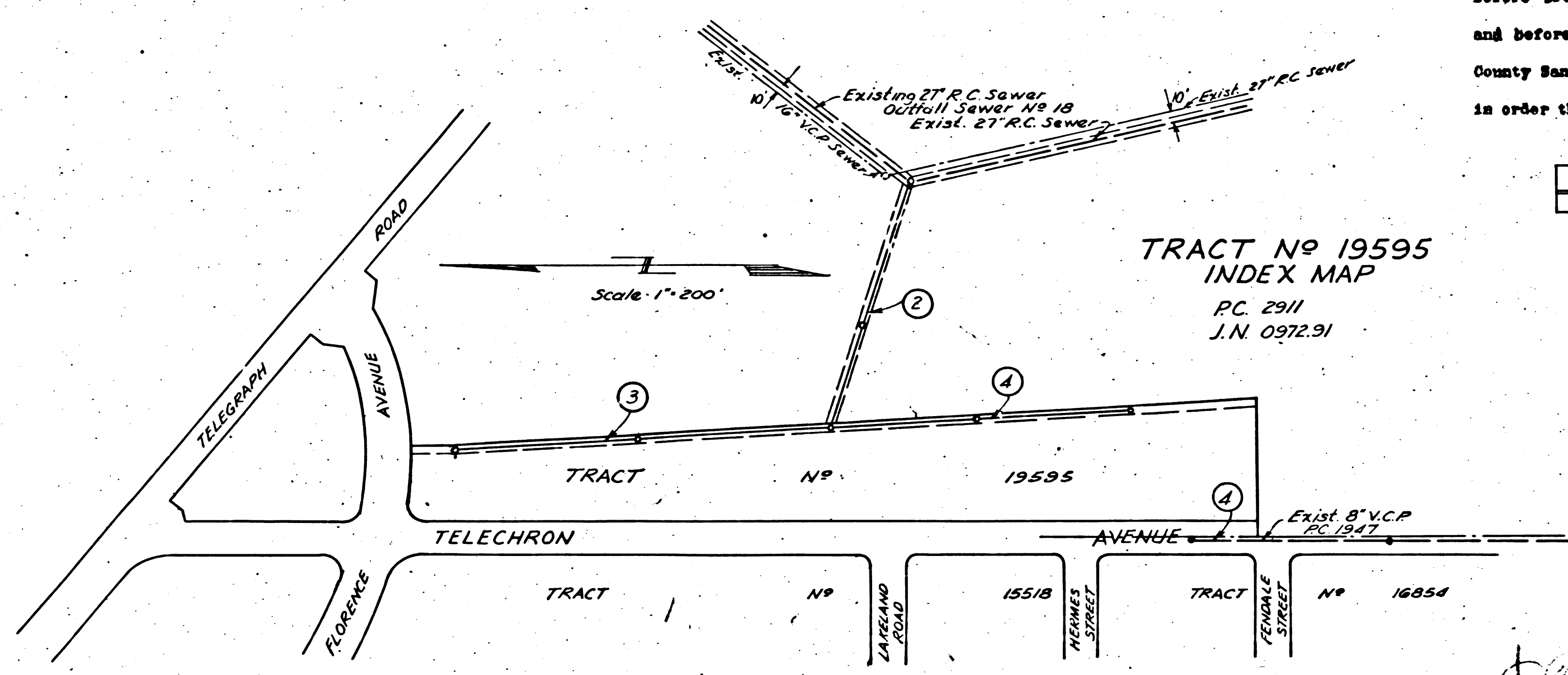
BELFLOWER BLDG. DIST. NO 11

BENCH MARK:
L & T in SE Cor of headwall on
bridge over Palm Creek 600'
West of Victoria Ave. and 18'
South of E of Anaheim-Telegraph
Road.
C.S.B.M. 1163 Elev. 135.656

- NOTE:**
Provide stakes on the property lines or property lines produced at right angles to the sewer line at the center line of each manhole.
No representative of the County Engineer will survey or layout any portion of the work. The owner or his authorized representative shall furnish the County Engineer with grade sheets and stations for all house laterals and Y branches and shall provide stakes for them at their proper locations with stationing plainly marked. Any change in location shall be requested in writing by the owner or his representative.
No revisions shall be made in these plans without the approval of the County Engineer.
1. Use standard manhole frames and covers, S-a-117.
 2. Use standard strength pipe except as noted.
 3. Use cement mortar for all vitrified clay pipe joints.
 4. Resurface all trench within paved area to meet L.A. County Road Dept. or Calif. State Highway Dept. requirements in accordance with permit.
 5. Encase four feet of sewer at points of interference with poles, S-a-119.
 6. House laterals to be constructed with 1/4" rise per foot to property line.
 7. All structures shall be brick sewer structures, S-a-104.
 8. Manhole tops in unimproved Rights-Of-Way to be 6" above finish grade.
 9. For allowable leakage test, use Formula No. 1, Spec's., Sec. 51.

Before breaking into any existing structure and before final acceptance of this work, County Sanitation District should be notified in order that required information may be made.

SHEET	PAGES
1	1-4



COLLECT CHARGES AS INDICATED
S. 11-14-54

Checked -
Mearns & Rodgers
9-30-54

PROFILE, ALIGNMENT AND GRADE OF
SANITARY SEWERS
TO BE CONSTRUCTED IN

TRACT NO 19595

PRIVATE CONTRACT NO. 2911
W. S. 34
SHEET 1 OF 1 SHEET
Scale: VERT. 1" = 4'
HORIZ. 1" = 40'
JANUARY 1954
PREPARED IN THE OFFICES OF
EDWARD N. FRISIUS
By Edward N. Frisius
Reg. C. E. No. 6362
FOR LEGEND SEE PLAN NO. S-a-64

NOTE:
Grades to which this improvement is to be constructed are shown on plans and profiles. Grade points for top of curbs, center line of streets, or center line of alleys are shown by circles on profiles. At all points between designated points the grade shall be established so as to conform to a straight line drawn between said designated points.
Elevations are in feet above U.S.G.S. datum or mean sea level.
This drawing and the data hereon are hereby made a part of the specifications. Work shall be constructed according to specifications on file in the office of the County Engineer and shall be prosecuted only in the presence of the County Engineer.
Before work can be started, the contractor must obtain a permit to excavate in County streets from the L.A. County Road Dept., 108 W. 2nd St. and make a deposit with the County Engineer, 733 L.A. County Engineering Building, sufficient to cover the cost of construction inspection and record plans.
Approval of this plan by the County of Los Angeles does not constitute a representation as to the accuracy of the location of or the existence or non-existence of any underground utility, pipe, or structure within the limits of this project. This note applies to all sheets.
If work is to be done in a State Highway, a permit must be obtained from the State of California, Division of Highways, 120 South Spring Street.

COUNTY OF LOS ANGELES, CALIFORNIA
Approved, William J. Fox, County Engineer
Approved, A. M. Rawn
CHIEF ENGR. CO. SAN. DIST. NO. 10
By A.P. Collins
SANITATION ENGINEER
Checked By: Robert J. ...
Office of County Engineer, Reg. C. E. No. 28612
REVISION APPROVED ... 6-30-54
OFFICE OF COUNTY ENGINEER, REG. C. E. NO. 7800

PC 2911
J.N. 0972.91
Page 1
DOUBLE SCALE

18,991

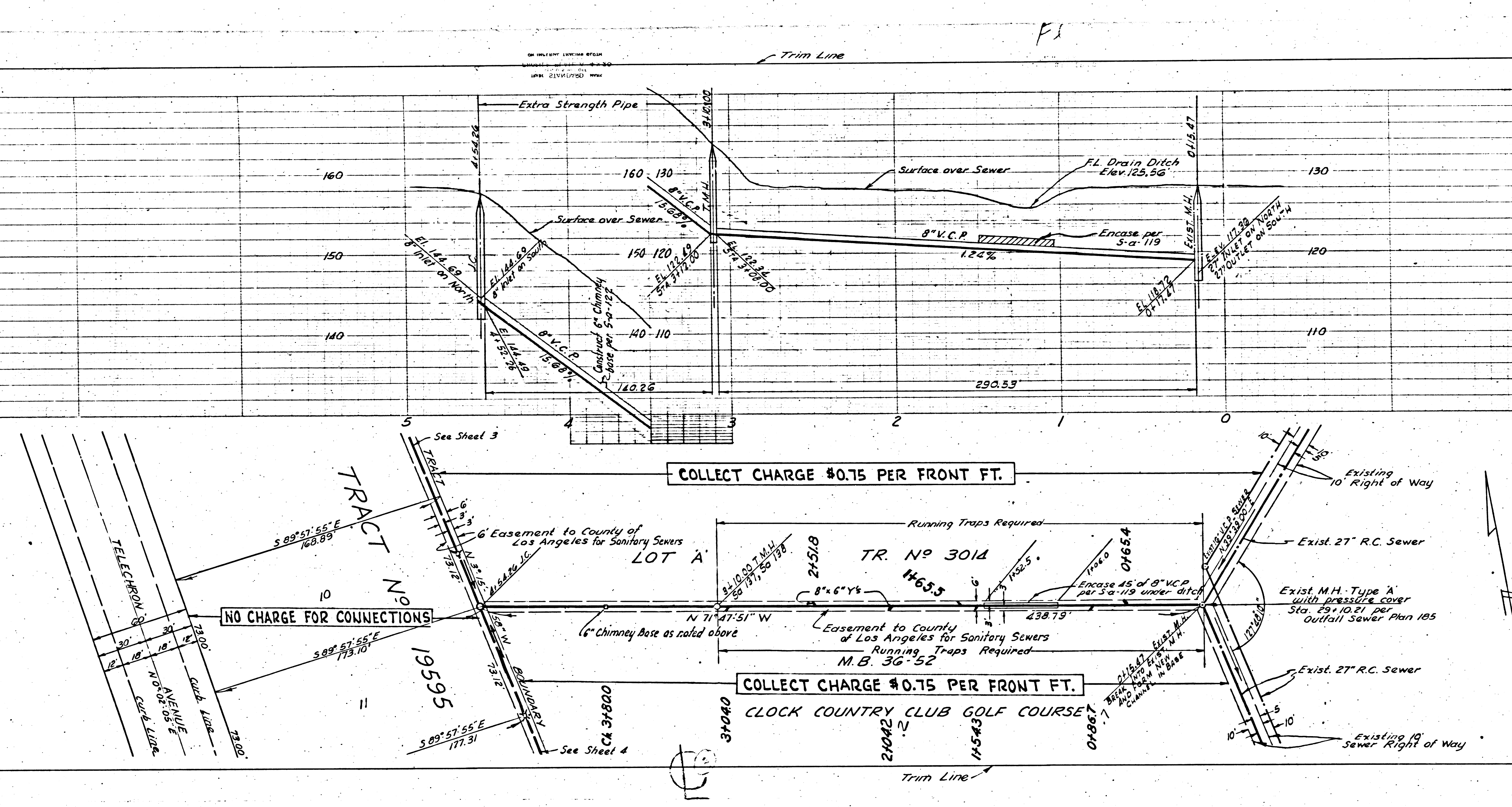
18,991
PC 2911
J.N. 0972.91
Page 1
DOUBLE SCALE
TRACT 19595

PC. 2911
J.N. 0972.91
Page 3
DOUBLE SCALE

18,993

PC. 2911
J.N. 0972.91
Page 2
DOUBLE SCALE

18,992

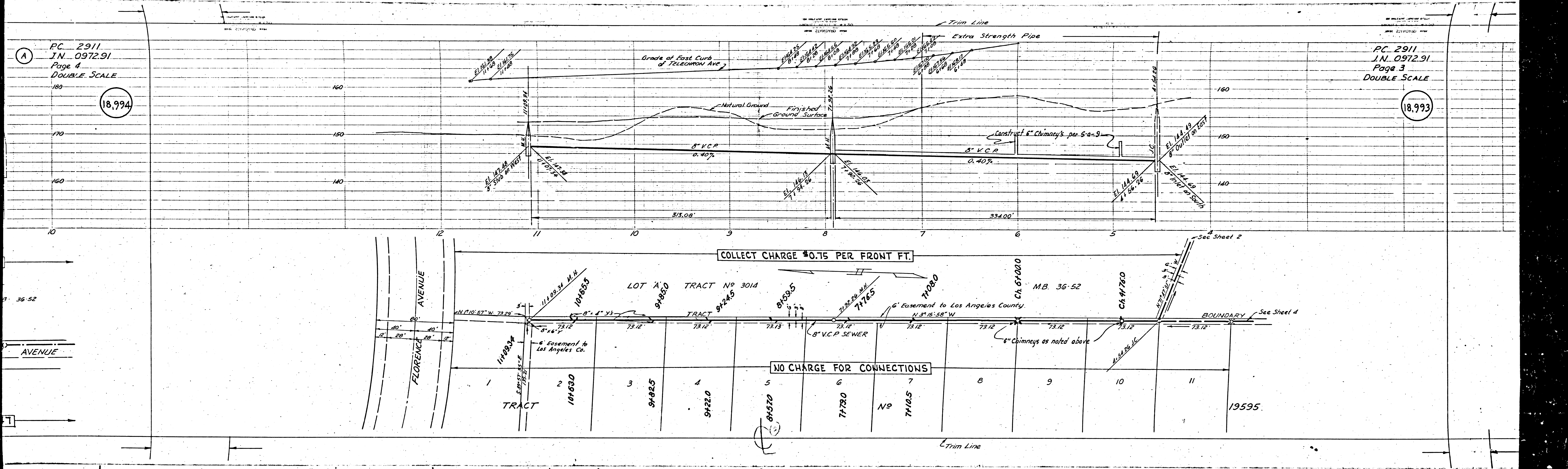


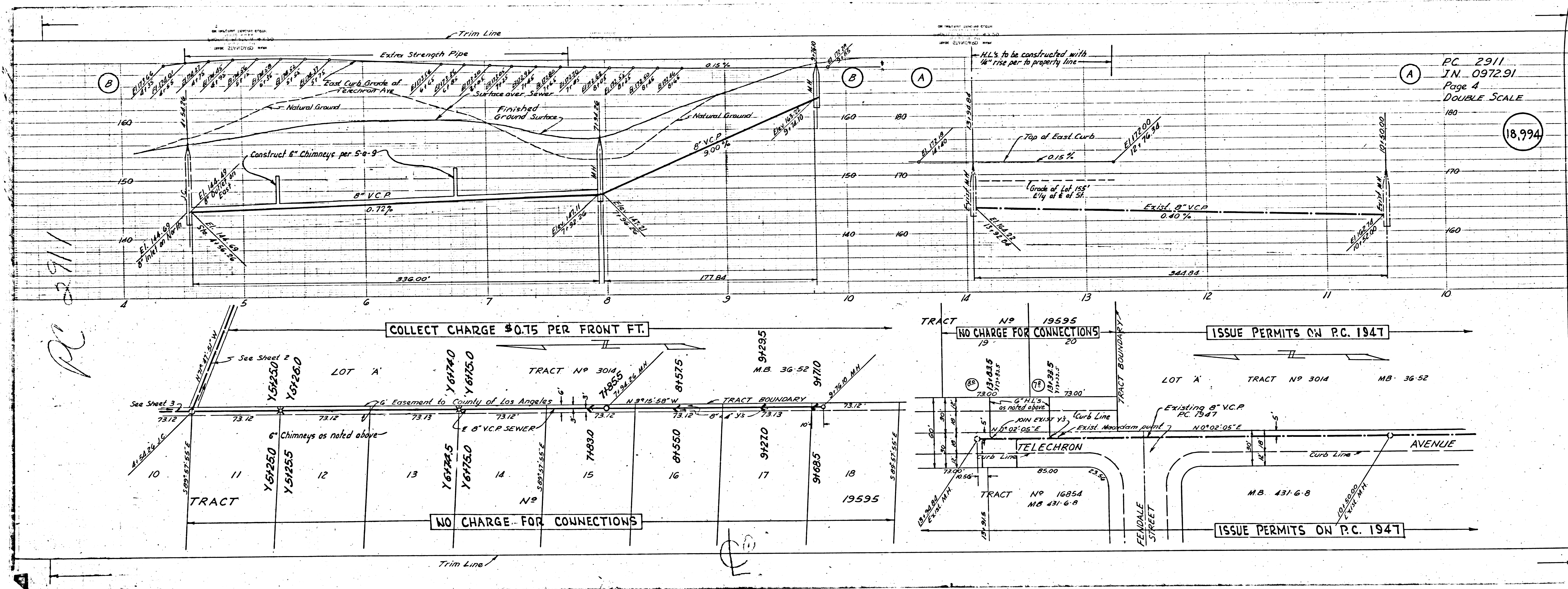
PC 2911
J.N. 0972.91
Page 4
DOUBLE SCALE

18,994

PC 2911
J.N. 0972.91
Page 3
DOUBLE SCALE

18,993





PC 2911
 IN. 0972.91
 Page 4
 DOUBLE SCALE

18,994

PC 2911

COLLECT CHARGE \$0.75 PER FRONT FT.

TRACT NO 19595
 NO CHARGE FOR CONNECTIONS

ISSUE PERMITS ON P.C. 1947

NO CHARGE FOR CONNECTIONS

ISSUE PERMITS ON P.C. 1947

See Sheet 3

See Sheet 2

6\"/>

Existing 6\"/>

Existing 6\"/>

TRACT NO 19595

TRACT NO 16854
 MB 431-6-8

TRACT NO 3014
 MB 36-52

ISSUE PERMITS ON P.C. 1947

Trim Line

Trim Line