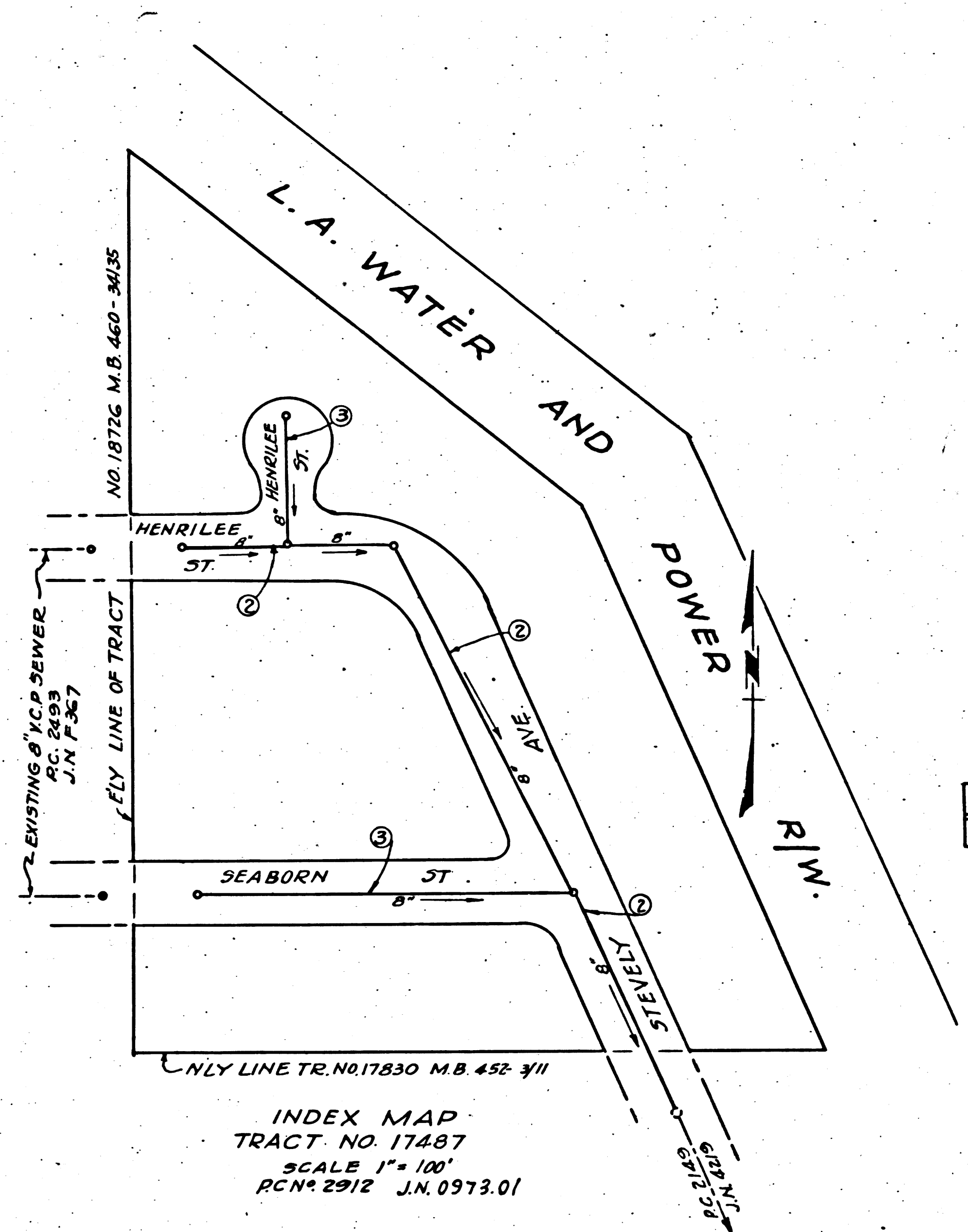


BELFLOWER BLDG. DIST. No. 4



B.M. 37.138-56 Elev. 45.647 L&N in West Curb Woodruff 2' So. Curb return at S.W. Corner of Carson Street

SHEET	PAGES
1	1-3

INDEX MAP  
TRACT NO. 17487  
SCALE 1" = 100'  
PCN# 2912 J.N. 0973.01

checked 4-30-54 M.H. Green

- NOTE:  
NO REPRESENTATIVE OF THE COUNTY ENGINEER WILL SURVEY OR LAY OUT ANY PORTION OF THE WORK.  
THE OWNER OR HIS AUTHORIZED REPRESENTATIVE SHALL FURNISH THE COUNTY ENGINEER WITH GRADE SHEETS AND STATIONS FOR ALL HOUSE LATERALS AND Y BRANCHES AND SHALL PROVIDE STAKES FOR THEM AT THEIR PROPER LOCATIONS WITH STATING PLAINLY MARKED. ANY CHANGE OF LOCATION SHALL BE REQUESTED IN WRITING BY THE OWNER OR HIS REPRESENTATIVE.  
NO REVISIONS SHALL BE MADE IN THESE PLANS WITHOUT APPROVAL OF THE COUNTY ENGINEER.
1. USE STANDARD MANHOLE FRAMES AND COVERS, 5-a-117.
  2. USE STANDARD STRENGTH PIPE EXCEPT AS NOTED.
  3. USE JOINT COMPOUND FOR ALL VITRIFIED CLAY PIPE JOINTS.
  4. RESURFACE ALL TRENCH WITHIN PAVED AREA TO MEET L.A. COUNTY ROAD DEPT. REQUIREMENTS IN ACCORDANCE WITH PERMIT.
  5. ENCASE FOUR FEET OF SEWER AT POINTS OF INTERFERENCE WITH POLES, 5-a-119.
  6. HOUSE LATERALS TO BE CONSTRUCTED WITH INVERT AT PROPERTY LINE 6 FEET BELOW CURB GRADE EXCEPT AS NOTED.
  7. ALL STRUCTURES SHALL BE BRICK SEWER STRUCTURES, 5-a-104.
  8. PROVIDE STAKES ON THE PROPERTY LINES OR PROPERTY LINES PRODUCED, AT RIGHT ANGLES TO THE SEWER LINE AT THE CENTER LINE OF EACH MANHOLE.
  9. FOR ALLOWABLE LEAKAGE TEST USE FORMULA NO. 2, SPECS. SEC. 51.

ENGINEERING SERVICE CORPORATION  
1127 W. WASHINGTON BLVD.  
LOS ANGELES 15, CALIF. PR. 7281

REVISIONS	

TRACED BY J.W.F.  
DES'G'D BY J.W.F.  
CK'D BY K.S.  
SUBMITTED M.S.

W. O. NO.	DWG. NO.	DATE	SCALE	L. B.	P. B.
4328-19			1" = 40'		

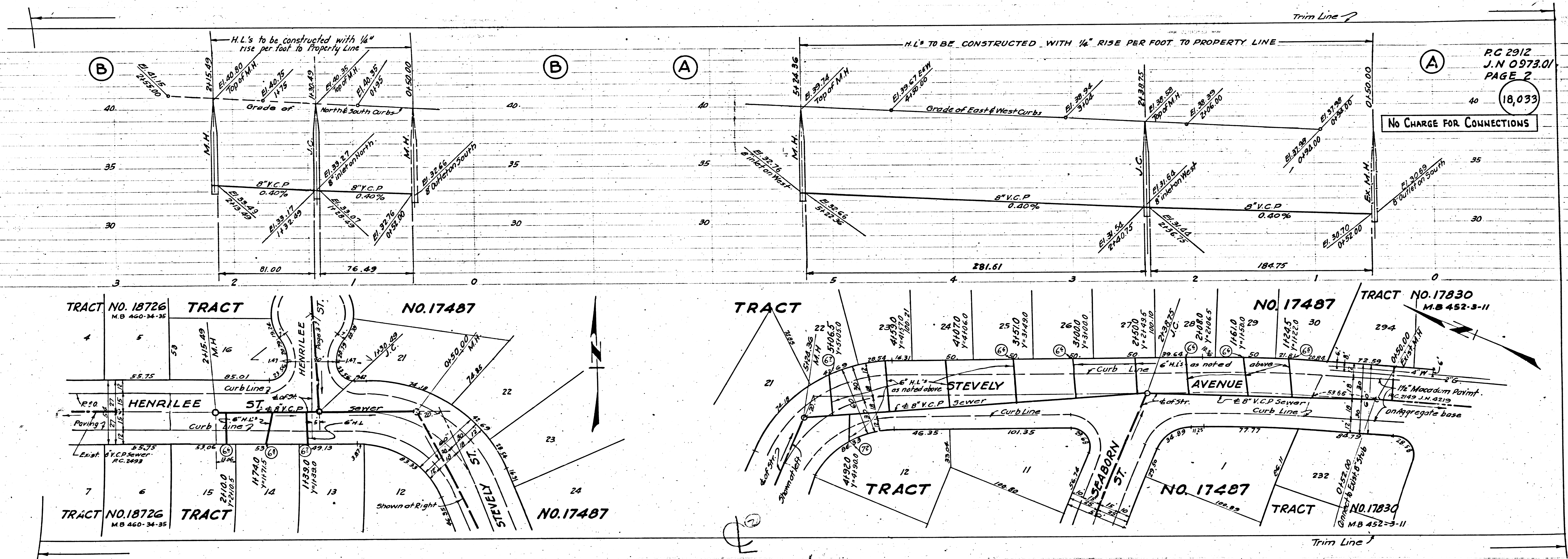
NO CHARGE FOR CONNECTIONS  
L.S. Green 5-17-54

PROFILE, ALIGNMENT AND GRADE OF  
**SANITARY SEWERS**  
TO BE CONSTRUCTED IN  
**TRACT NO. 17487**  
PRIVATE CONTRACT NO. 2912  
W. S. 31  
SHEET 1 OF 1 SHEET  
FEB. 1954  
PREPARED IN THE OFFICES OF  
ENGINEERING SERVICE CORPORATION  
BY E. B. Green  
REG. C. E. NO. 3692  
FOR LEGEND  
SEE PLAN NO. 5-a-64

NOTE:  
GRADES TO WHICH THIS IMPROVEMENT IS TO BE CONSTRUCTED ARE SHOWN ON PLANS AND PROFILES. GRADE POINTS FOR TOP OF CURB, CENTER LINE OF STREETS, OR CENTER LINE OF ALLEY ARE SHOWN BY CIRCLES ON PROFILES. AT ALL POINTS BETWEEN DESIGNATED POINTS THE GRADE SHALL BE ESTABLISHED SO AS TO CONFORM TO A STRAIGHT LINE DRAWN BETWEEN SAID DESIGNATED POINTS.  
ELEVATIONS ARE IN FEET ABOVE U. S. G. S. DATUM OR MEAN SEA LEVEL.  
THIS DRAWING AND THE DATA HEREON ARE HEREBY MADE A PART OF THE SPECIFICATIONS.  
WORK SHALL BE CONSTRUCTED ACCORDING TO SPECIFICATIONS ON FILE IN THE OFFICE OF THE COUNTY ENGINEER AND SHALL BE PROSECUTED ONLY IN THE PRESENCE OF THE COUNTY ENGINEER.  
BEFORE WORK CAN BE STARTED THE CONTRACTOR MUST OBTAIN A PERMIT TO EXCAVATE IN COUNTY STREETS FROM THE L.A. COUNTY ROAD DEPT. 108 W. 2ND ST. AND MAKE A DEPOSIT WITH THE COUNTY ENGINEER, 733 COUNTY ENGINEERING BUILDING SUFFICIENT TO COVER THE COST OF CONSTRUCTION INSPECTION AND RECORD PLANS.  
APPROVAL OF THIS PLAN BY THE COUNTY OF LOS ANGELES DOES NOT CONSTITUTE A REPRESENTATION AS TO THE ACCURACY OF THE LOCATION OF, OR THE EXISTENCE OR NON-EXISTENCE OF, ANY UNDERGROUND UTILITY, PIPE, OR STRUCTURE WITHIN THE LIMITS OF THIS PROJECT.

COUNTY OF LOS ANGELES, CALIFORNIA  
APPROVED WILLIAM J. FOX COUNTY ENGINEER  
APPROVED A. M. RAWN CHIEF ENGINEER OF COUNTY SANITATION DISTRICT NO. 3  
BY A. P. Collins SANITATION ENGINEER  
BY M. B. ... OFFICE ENGINEER  
CHECKED BY ... OFFICE OF COUNTY ENGINEER  
REG. C. E. NO. 8805

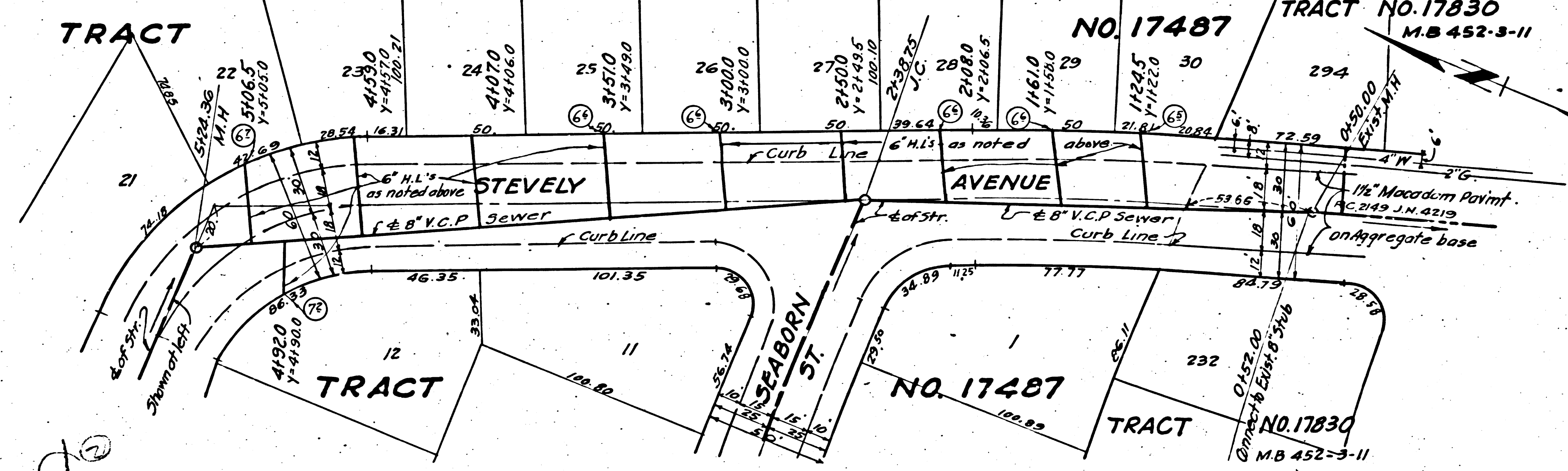
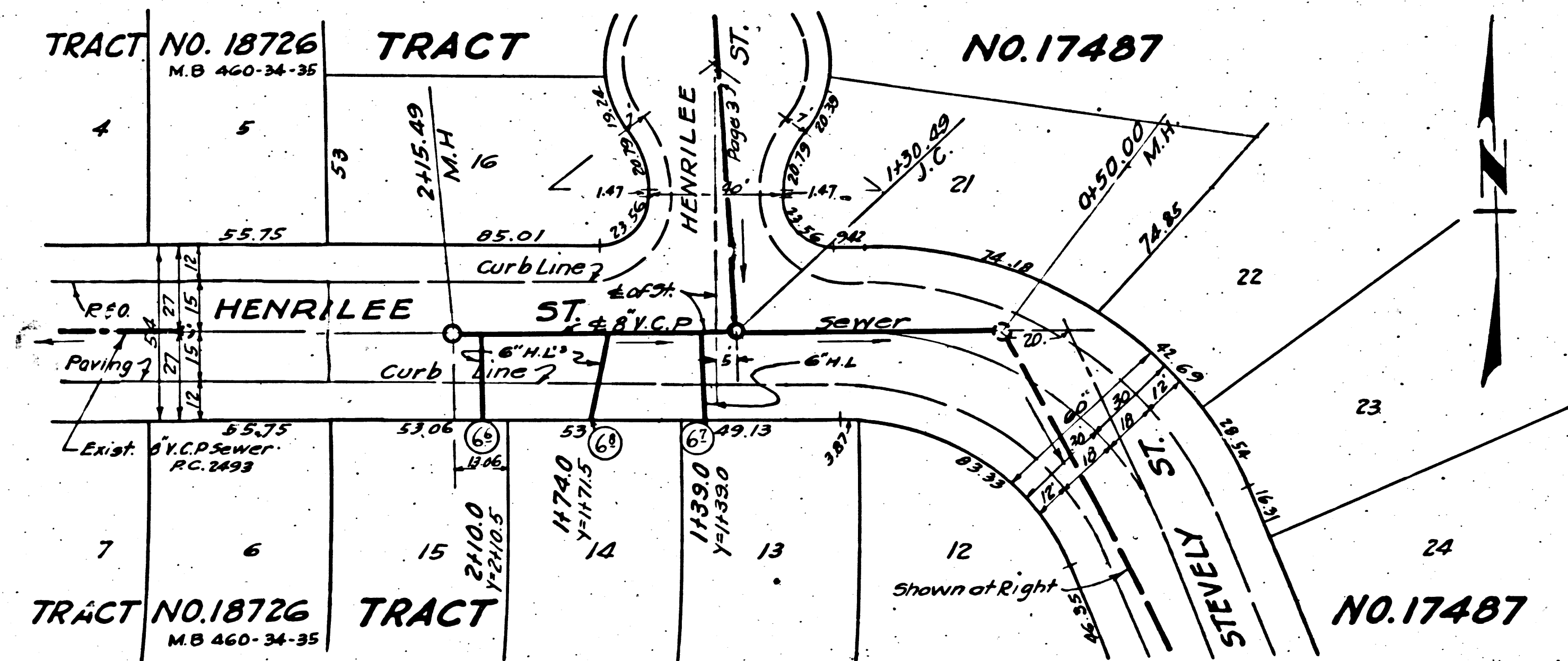
P. C. 2912  
J. N. 0973.01  
PAGE 1  
18,032  
SANITARY SEWERS  
TRACT NO. 17487  
P.C. 2912  
J.N. 0973.01  
PAGE 1



P.C. 2912  
J.N. 0973.01  
PAGE 2

18,033

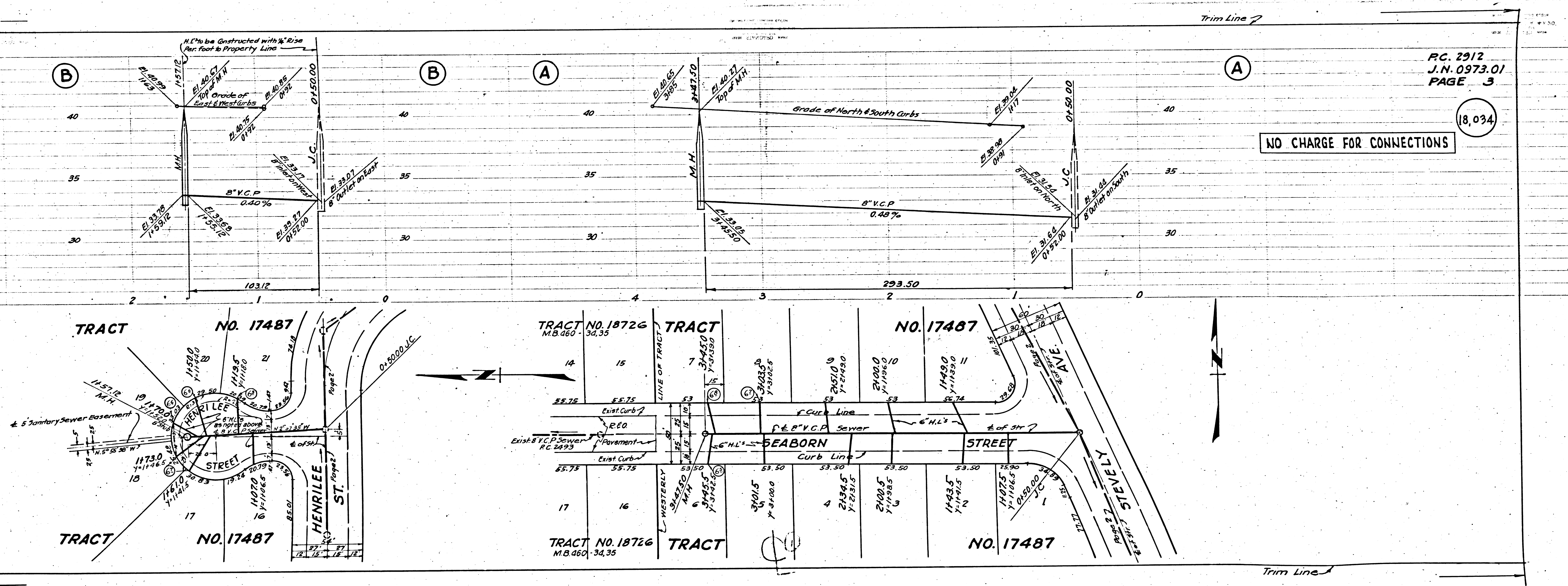
No Charge for Connections



1  
SIES CA  
10.870 M.L.

1  
SEABORN ST  
TRACT NO. 17487

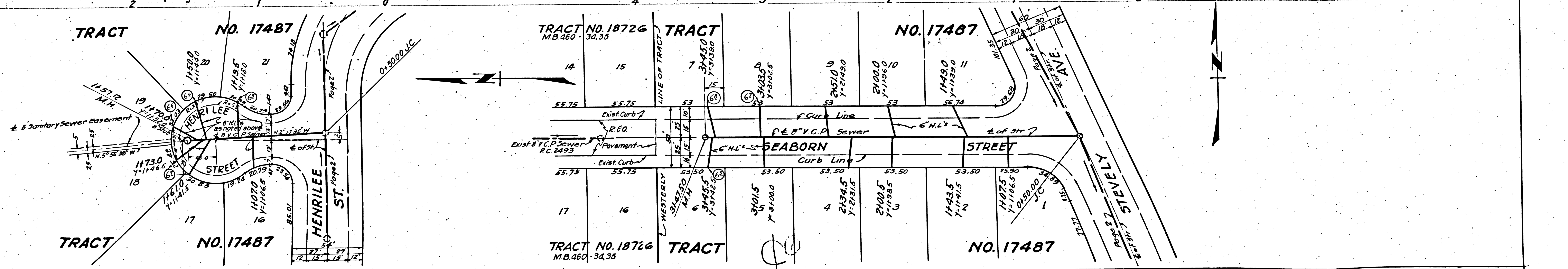
1



PC. 2912  
J.N. 0973.01  
PAGE 3

NO CHARGE FOR CONNECTIONS

18,034



Trim Line