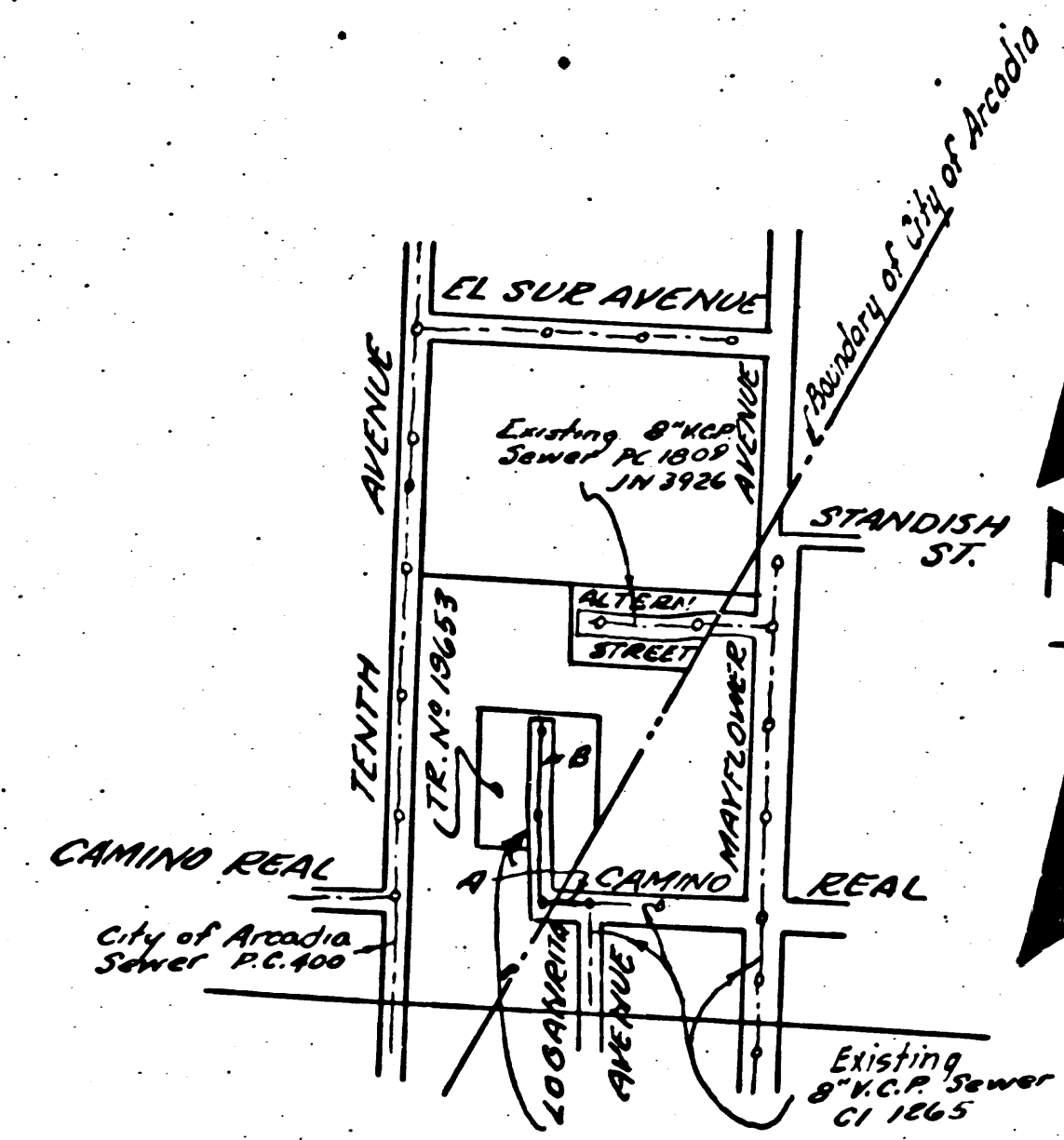


PC 2913  
J.N. F886  
PAGE 2

18,114

CONNECTION CHARGES  
AS SHOWN  
P.E.K. 2-15-54



INDEX MAP  
PC 2913  
J.N. F886  
Scale: 1"=600'

Checked 5-12-54 W. L. Loran

TRIM LINE 7  
TEMPLE CITY BLDG. DIST. NO 5

NOTE:

- Provide stakes on the property lines or property lines produced at right angles to the sewer line at the center line of each manhole.
- No representative of the County Engineer will survey or layout any portion of the work. The owner or his authorized representative shall furnish the County Engineer with grade sheets and stations for all house laterals and Y branches and shall provide stakes for them at their proper locations with stationing plainly marked. Any change in location shall be requested in writing by the owner or his representative.
- No revisions shall be made in these plans without the approval of the County Engineer.
1. Use standard manhole frames and covers, S-a-117.
  2. Use standard strength pipe except as noted.
  3. Use cement mortar for all vitrified clay pipe joints.
  4. Resurface all trench within paved area to meet L.A. County Road Dept. or Calif. State Highway Dept. requirements in accordance with permit.
  5. Encase four feet of sewer at points of interference with poles, S-a-119.
  6. House laterals to be constructed with inverts at property line...feet below curb grade except as noted.
  7. All structures shall be brick sewer structures, S-a-104.
  8. Manhole tops in unimproved Rights-Of-Way to be 6" above finish grade.
  9. For allowable leakage test, use Formula No. 1, Spec's., Sec. 51.

NOTE: ALL REFERENCES HEREON TO "COUNTY ENGINEER" SHALL ALSO INCLUDE THE CITY ENGINEER OF THE CITY OF ARCADIA. ALL WORK WITHIN THE CITY OF ARCADIA SHALL CONFORM TO THE STANDARDS AND SPECIFICATIONS OF SAID CITY.

Bench Mark: City of Arcadia, Bench Mark Book page 78  
L & T in South Curb Spanish Street 5' East  
of Southeast corner of Spanish Street &  
Mayflower Avenue. Elev. 395.31

SHEET NO	PIECES
1	1-2

APPROVED: City Engineer of the  
City of Arcadia  
P. M. Rogers

PROFILE, ALIGNMENT AND GRADE OF  
SANITARY SEWERS  
TO BE CONSTRUCTED IN  
TRACT NO 19653  
(PARTLY IN THE CITY OF ARCADIA AND  
PARTLY IN THE UNINCORPORATED  
TERRESTRIALITY OF THE COUNTY OF LOS ANGELES)  
PRIVATE CONTRACT NO. 2913  
W. S. 45  
SHEET / OF / SHEET  
Scale: VERT. 1"=4'  
HORIZ. 1"=40'  
DECEMBER, 1953  
PREPARED IN THE OFFICES OF  
M. W. FINLEY  
Checked by Marshall C. Fox  
Reg. C. E. No. 8292  
FOR LEGEND SEE PLAN NO. S-a-64

PC 2913  
J.N. F886  
PAGE 1  
J.N. 0973.12

18,113

NOTE:  
Grades to which this improvement is to be constructed are shown on plans and profiles. Grade points for top of curbs, center line of streets, or center line of alleys are shown by circles on profiles. At all points between designated points the grade shall be established so as to conform to a straight line drawn between said designated points.

Elevations are in feet above U.S.G.S. datum or mean sea level.

This drawing and the data hereon are hereby made a part of the specifications. Work shall be constructed according to specifications on file in the office of the County Engineer and shall be prosecuted only in the presence of the County Engineer.

Before work can be started, the contractor must obtain a permit to excavate in County streets from the L.A. County Road Dept., 108 W. 2nd St. and make a deposit with the County Engineer, 733 L.A. County Engineering Building, sufficient to cover the cost of construction inspection and record plans.

Approval of this plan by the County of Los Angeles does not constitute a representation as to the accuracy of the location of or the existence or non-existence of any underground utility, pipe, or structure within the limits of this project. This note applies to all sheets.

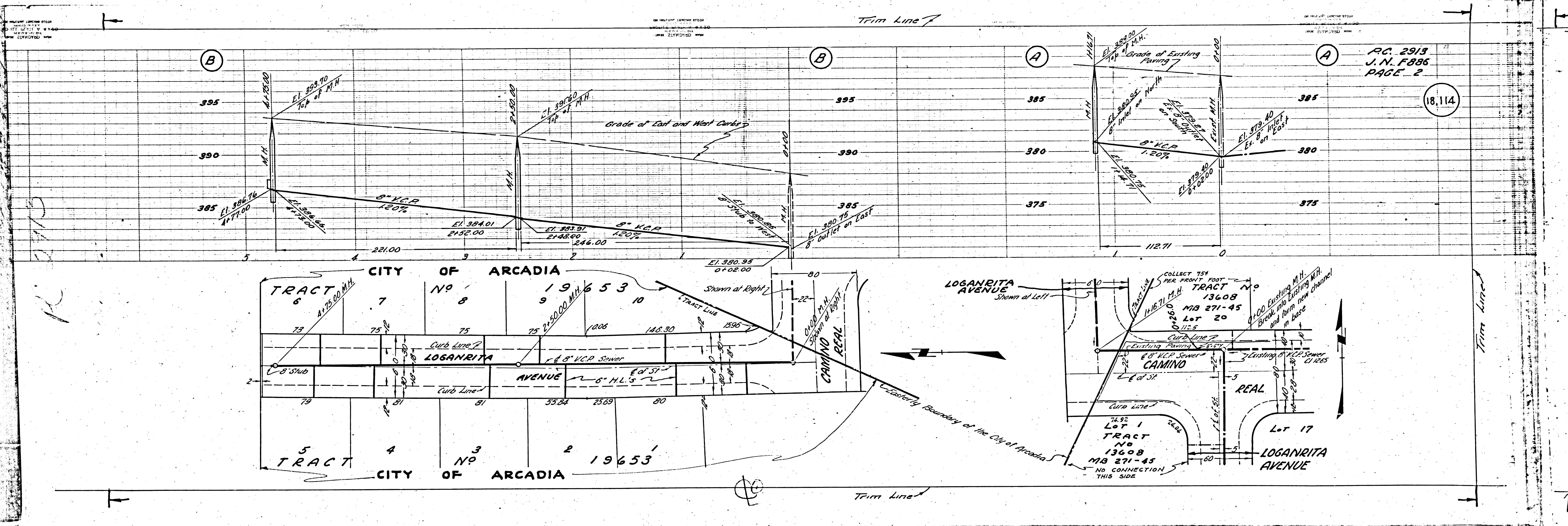
If work is to be done in a State Highway, a permit must be obtained from the State of California, Division of Highways, 120 South Spring Street.

COUNTY OF LOS ANGELES, CALIFORNIA  
Approved, William J. Fox, County Engineer  
Approved, A. M. Rawn  
CHIEF ENGR. OF SANJ DIST. NO. 15  
Checked by A. P. Collins  
Checked by Arthur S. Rosenthal  
Office of County Engineer, Reg. C. E. No. 8805

PC 2913  
TRACT NO. 19653  
M. W. FINLEY  
CITY ENGINEER

J.N. F886  
J.N. 0973.12

rd.



P.C. 2913  
 J.N. F886  
 PAGE 2

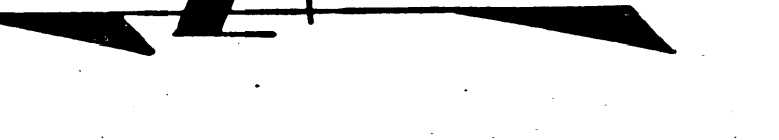
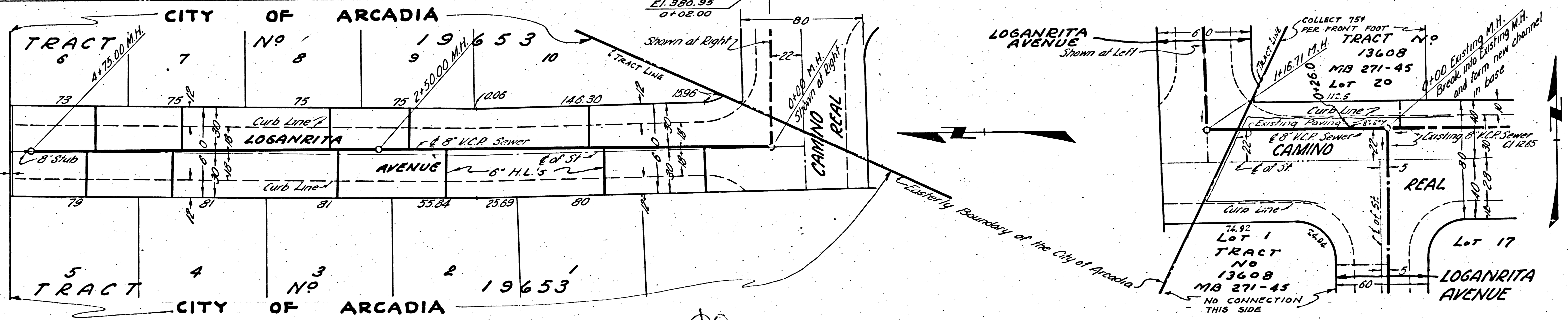
18,114

R 210  
 100'

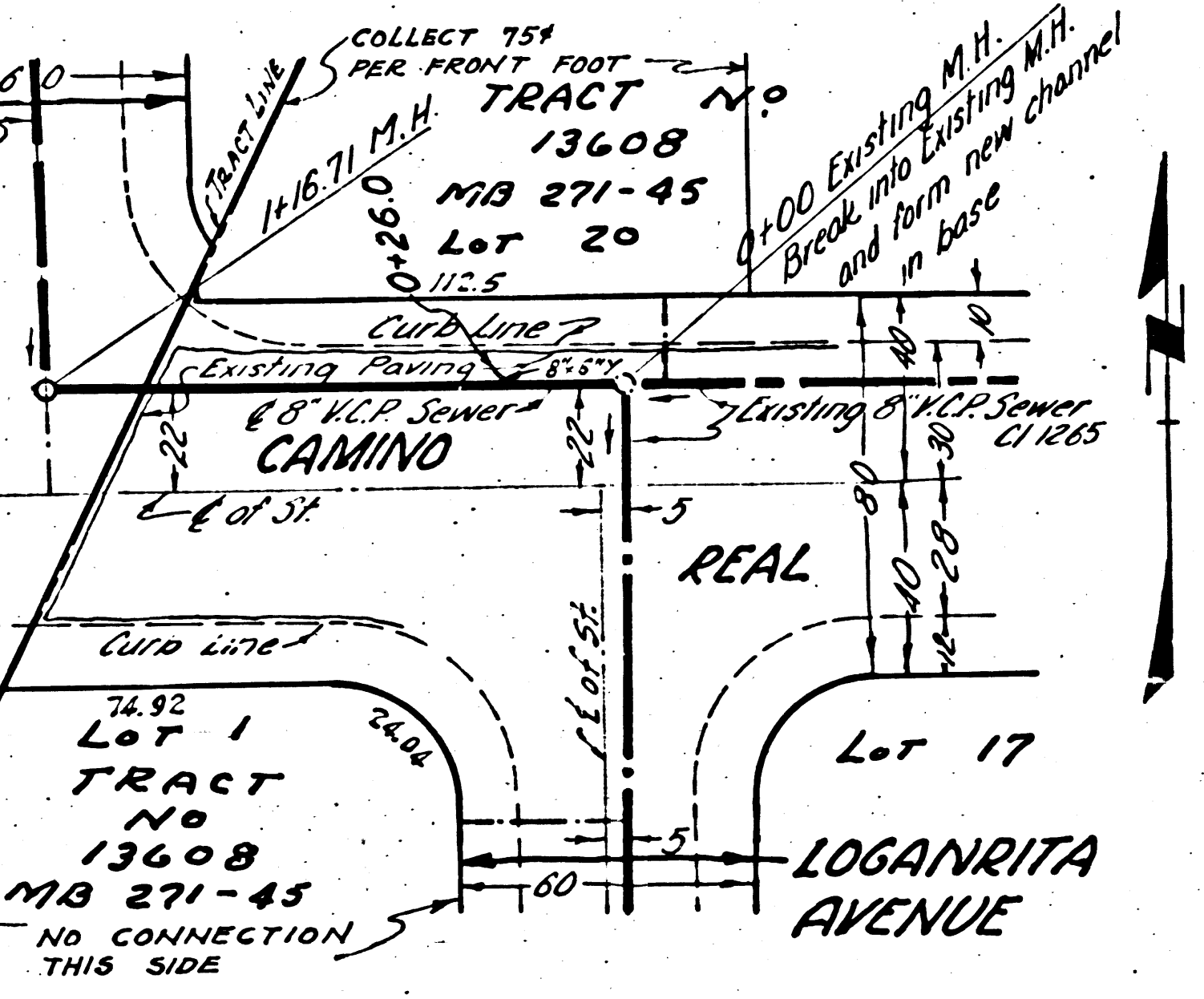
Trim Line 7

Trim Line 1

Trim Line 8



Easterly Boundary of the City of Arcadia



NO CONNECTION THIS SIDE