

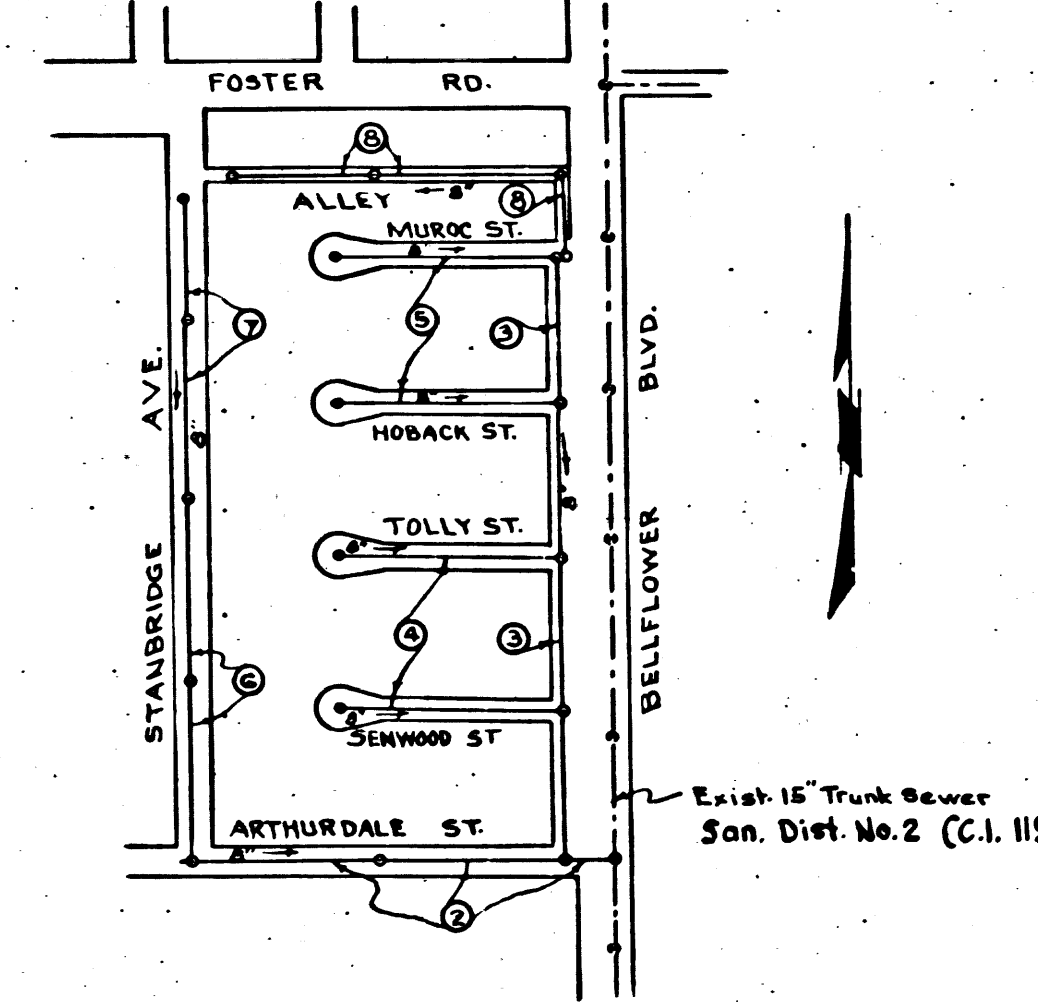
18,426	73.51
--------	-------

B.M. Rd. Dept 5Y392 EL 92.600
 Ardis Ave. & Imperial Hwy. - S.E. Cor.
 L. & T. in E. curb 100' S. of Imperial Hwy.

SHEET NO.	PAGES
1	1-A
2	5-B

BELLFLOWER BLDG. DIST. N^o 4

- NOTE:**
 Provide stakes on the property lines or property lines produced at right angles to the sewer line at the center line of each manhole.
 No representative of the County Engineer will survey or layout any portion of the work. The owner or his authorized representative shall furnish the County Engineer with grade sheets and stations for all house laterals and Y branches and shall provide stakes for them at their proper locations with stationing plainly marked. Any change in location shall be requested in writing by the owner or his representative.
 No revisions shall be made in these plans without the approval of the County Engineer.
1. Use standard manhole frames and covers, S-a-117, except as noted.
 2. Use standard strength pipe except as noted.
 3. Use cement mortar for all vitrified clay pipe joints.
 4. Resurface all trench within paved area to meet L.A. County Road Dept. or Calif. State Highway Dept. requirements in accordance with permit.
 5. Encase four feet of sewer at points of interference with poles, S-a-119.
 6. House laterals to be constructed with inverts at property line.....feet below curb grade except as noted.
 7. All structures shall be brick sewer structures, S-a-104, except as noted.
 8. Manhole tops in unimproved Rights-Of-Way to be 6" above finish grade.
 9. For allowable leakage test, use Formula No. 1....., Spec's, Sec. 51.



INDEX MAP
 SCALE - 1" = 40'
 TRACT N^o 19596
 P.C. 2916 J.N. 0973.51

CONNECTION CHARGES
 AS INDICATED
4-15-54

Before breaking into any existing structure
 and before final acceptance of this work,
 County Sanitation District should be notified
 in order that required inspection may be made.

Checked 7-13-54 McLean

PROFILE, ALIGNMENT AND GRADE OF SANITARY SEWERS TO BE CONSTRUCTED IN TRACT N^o 19596

P.C. 2916
 J.N. 0973.51
 PAGE 1,

PRIVATE CONTRACT NO. 2916
 W. S. 33
 SHEET 1 OF 2 SHEETS
 Scale: VERT. 1" = 4'
 HORIZ. 1" = 40'
 JAN., 1954
 PREPARED IN THE OFFICES OF
 VALLEY ENGINEERING CO.
 FOR LEGEND SEE PLAN NO. S-a-64

NOTE:
 Grades to which this improvement is to be constructed are shown on plans and profiles. Grade points for top of curbs, center line of streets, or center line of alleys are shown by circles on profiles. At all points between designated points the grade shall be established so as to conform to a straight line drawn between said designated points.
 Elevations are in feet above U.S.G.S. datum or mean sea level.
 This drawing and the data hereon are hereby made a part of the specifications.
 Work shall be constructed according to specifications on file in the office of the County Engineer and shall be prosecuted only in the presence of the County Engineer.
 Before work can be started, the contractor must obtain a permit to excavate in County streets from the L.A. County Road Dept., 108 W. 2nd St. and make a deposit with the County Engineer, 733 L.A. County Engineering Building, sufficient to cover the cost of construction inspection and record plans.
 Approval of this plan by the County of Los Angeles does not constitute a representation as to the accuracy of the location of or the existence or non-existence of any underground utility, pipe, or structure within the limits of this project. This note applies to all sheets.
 If work is to be done in a State Highway, a permit must be obtained from the State of California, Division of Highways, 120 South Spring Street.

COUNTY OF LOS ANGELES, CALIFORNIA
 Approved, William J. Fox, County Engineer
 Approved, A. M. Rawn
 CHIEF ENGR. CO. SAN. DIST. NO. 2
 Sanitation Engineer
 Office Engineer
 Checked By: *R. K. ...* 4-15-54
 Office of County Engineer, Bldg. C. E. No. 7262

18,426

TRACT N^o 19596

P.C. 2916

J.N. 0973.51

Rd.

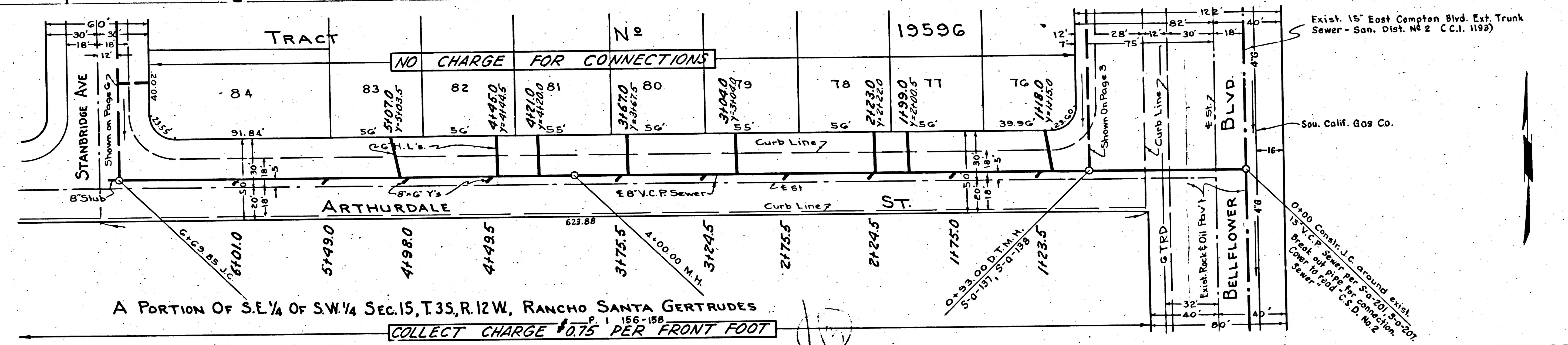
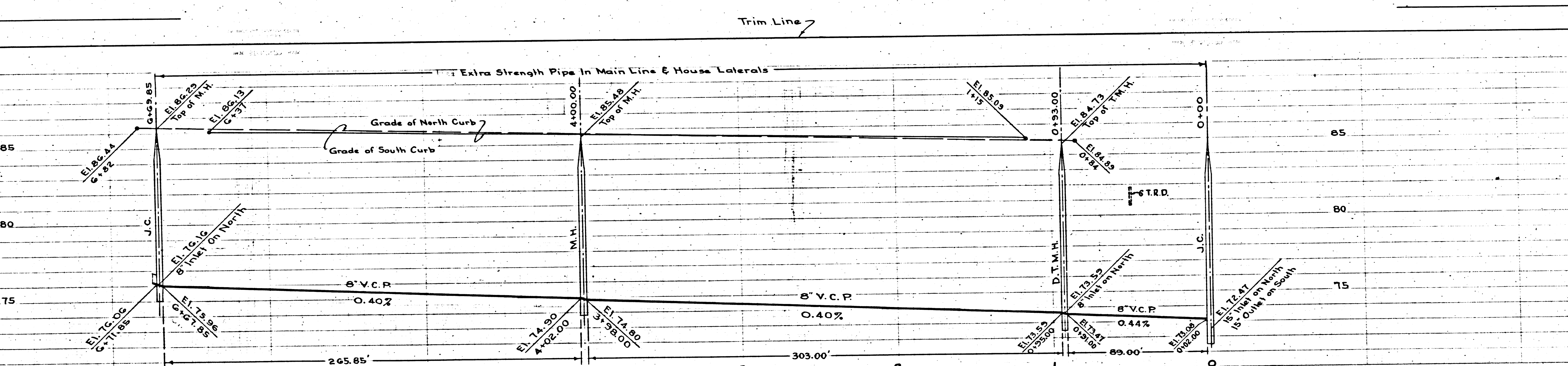
PC. 2916
J.N. 0973.51
PAGE 3

18,427

NO CHARGE FOR CONNECTIONS

PC. 2916
J.N. 0973.51
PAGE 2

18,426



A PORTION OF S.E. 1/4 OF S.W. 1/4 SEC. 15, T.35, R.12W, RANCHO SANTA GERTRUDES
COLLECT CHARGE \$0.75 PER FRONT FOOT

Exist 15' East Compton Blvd. Ext Trunk Sewer - San. Dist. No. 2 C.C.I. 1193)
Sou. Calif. Gas Co.
0.000 Const. J.C. around exist 15' V.C.P. sewer per Page 201 for 201' Break out for 15' for connection. Curb for 15' for 15' C.C.I. No. 2

(A)

PC. 2916
J.N. 0973.51
PAGE 4

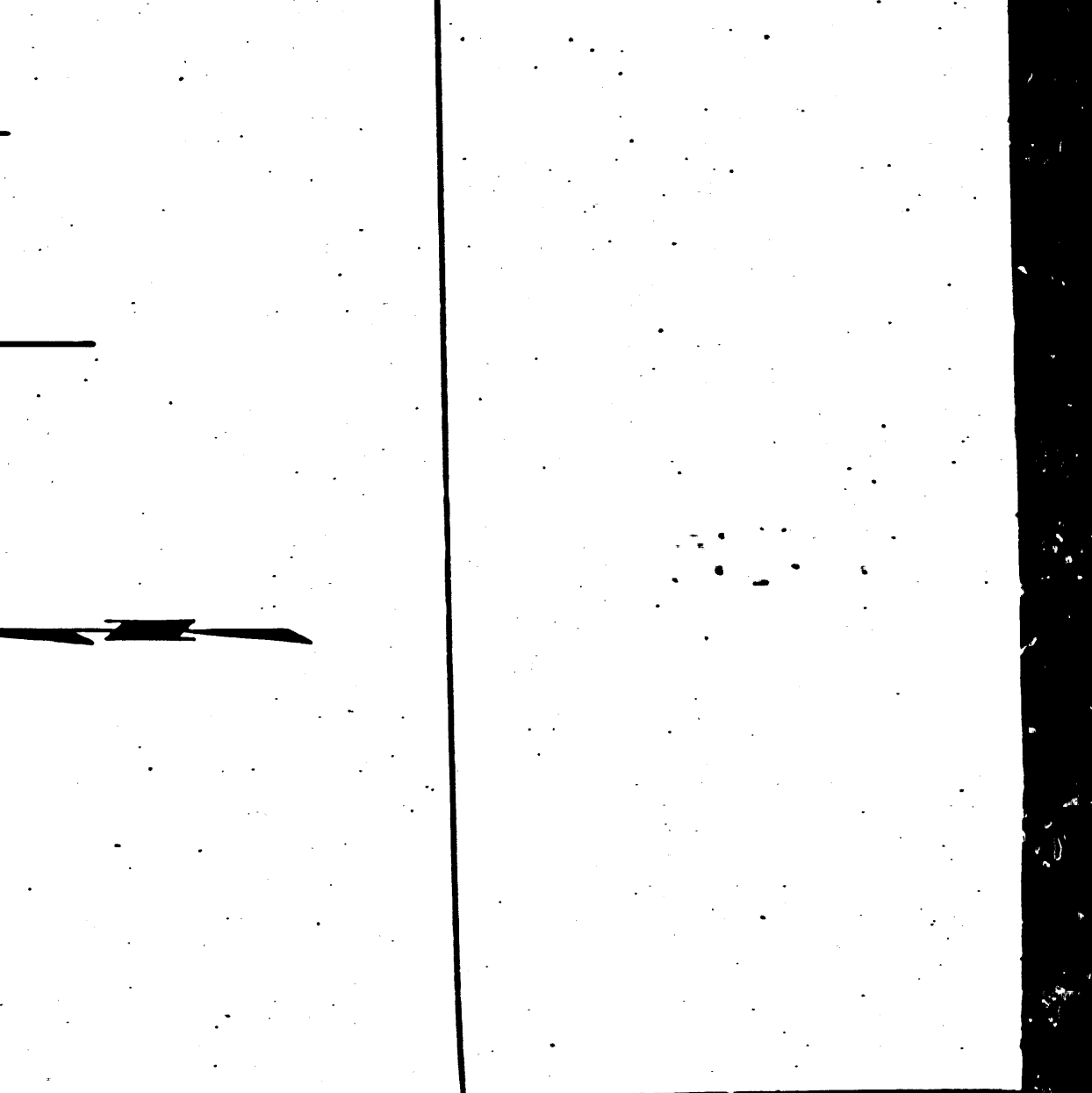
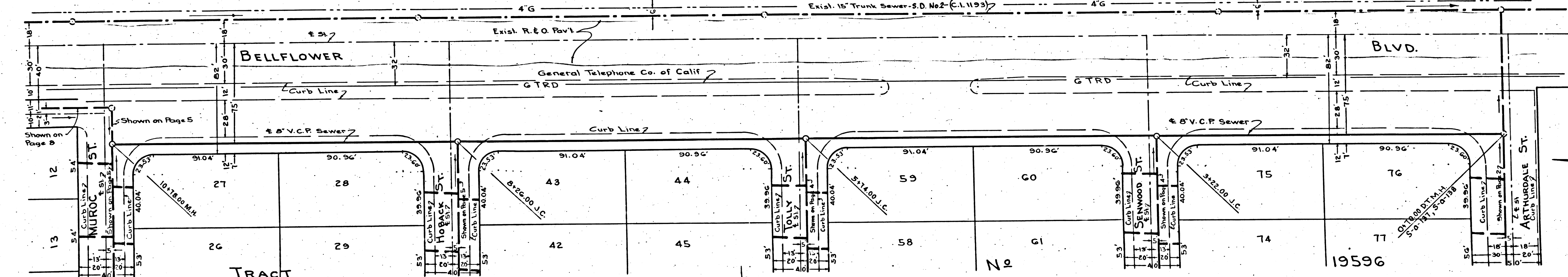
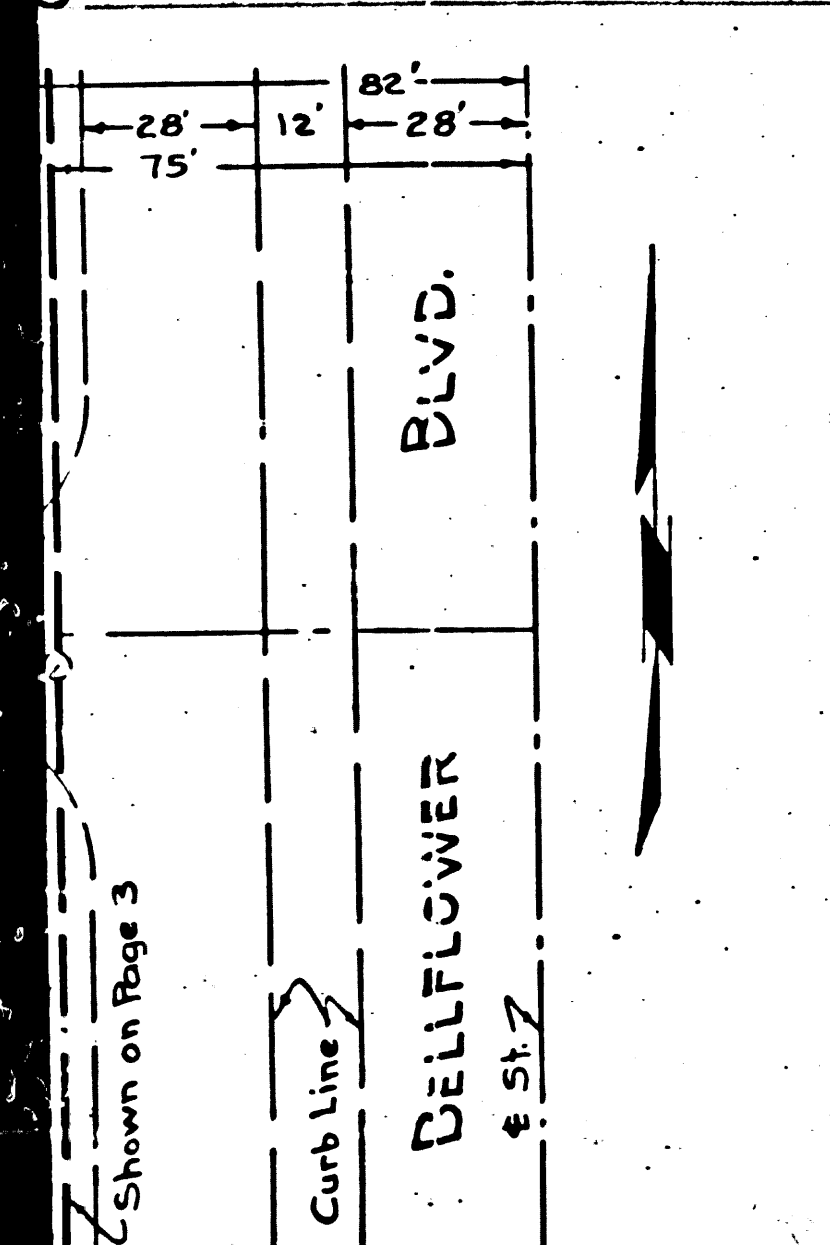
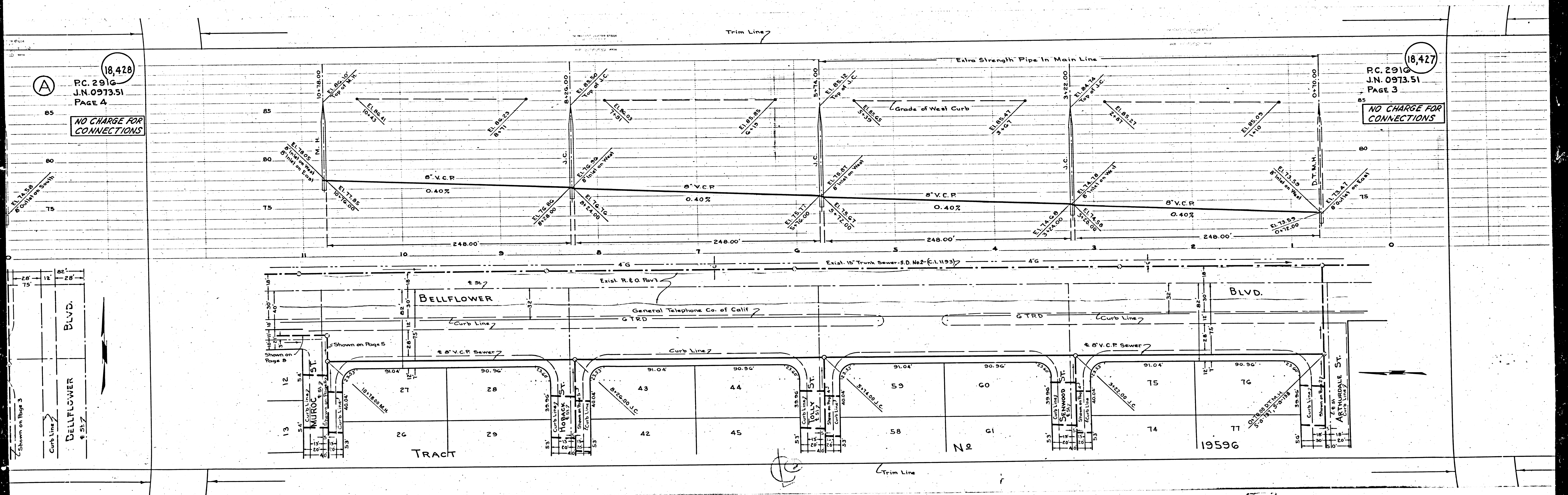
18,428

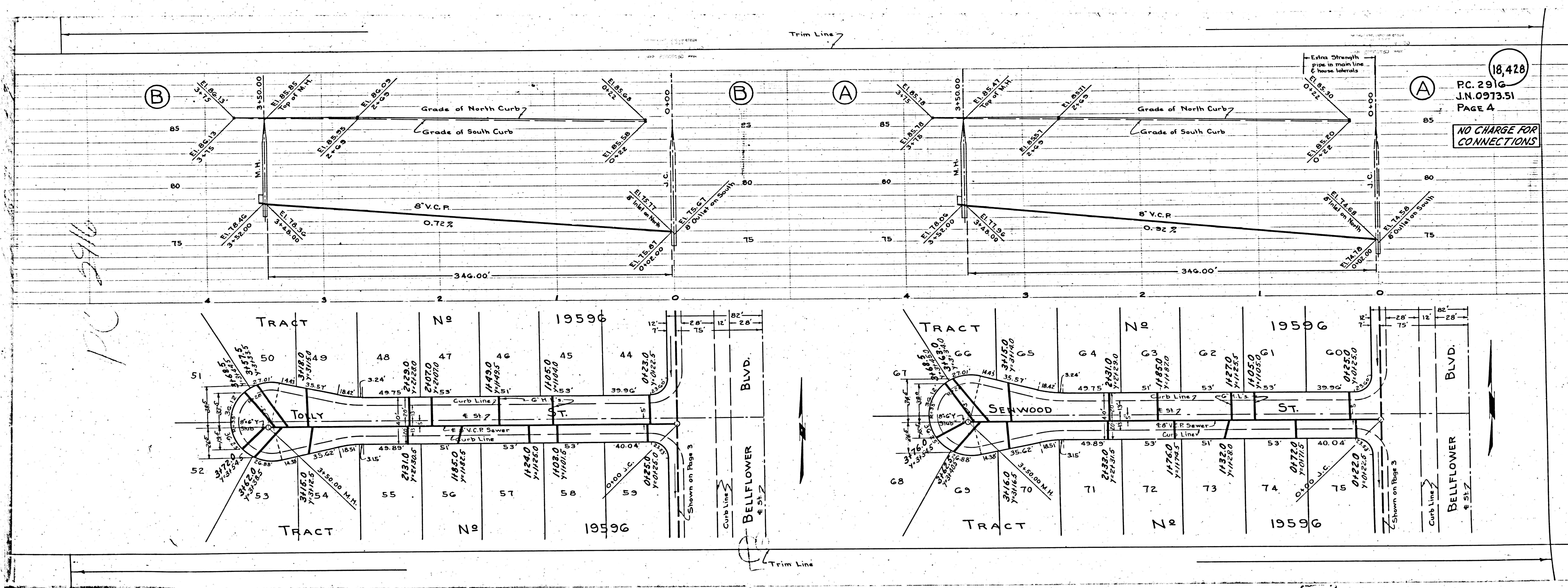
NO CHARGE FOR CONNECTIONS

PC. 2916
J.N. 0973.51
PAGE 3

18,427

NO CHARGE FOR CONNECTIONS





9/16
2/1

18,428
RC. 2916
J.N. 0973.51
PAGE 4
NO CHARGE FOR CONNECTIONS

BELFLOWER
51.7

BELFLOWER
51.7

Shown on Page 3

Shown on Page 3

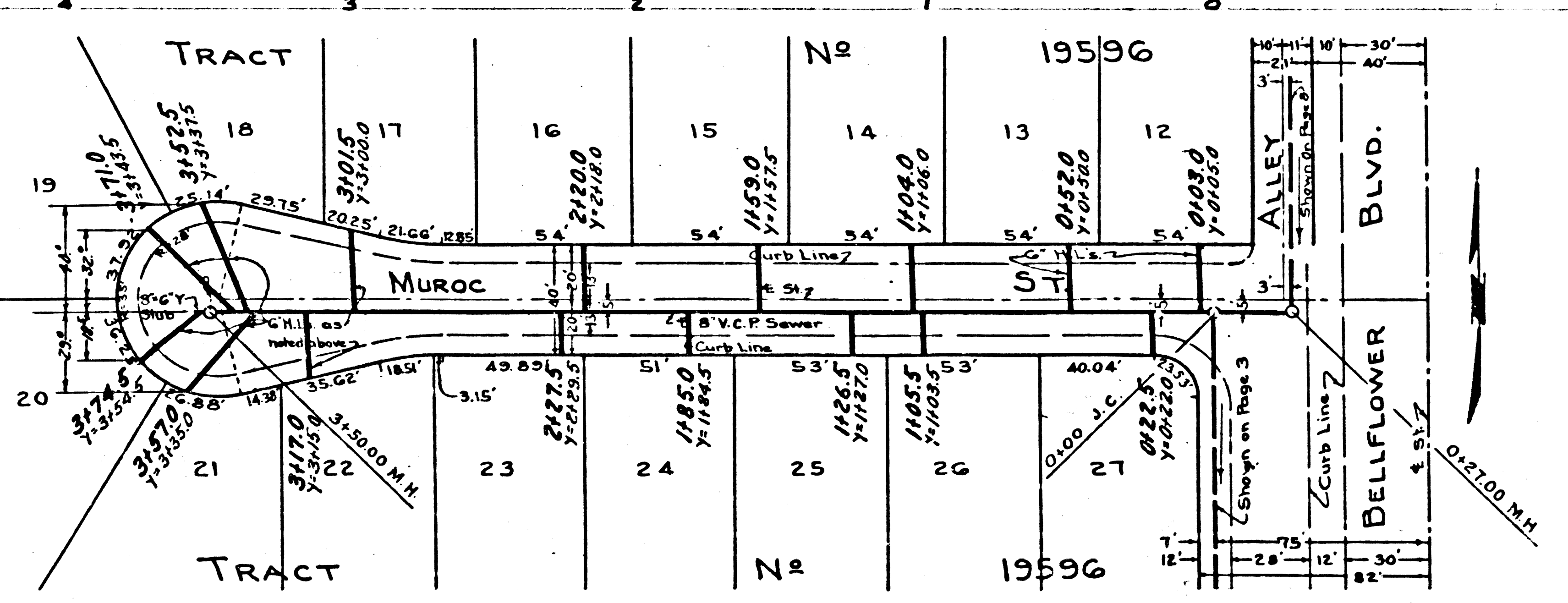
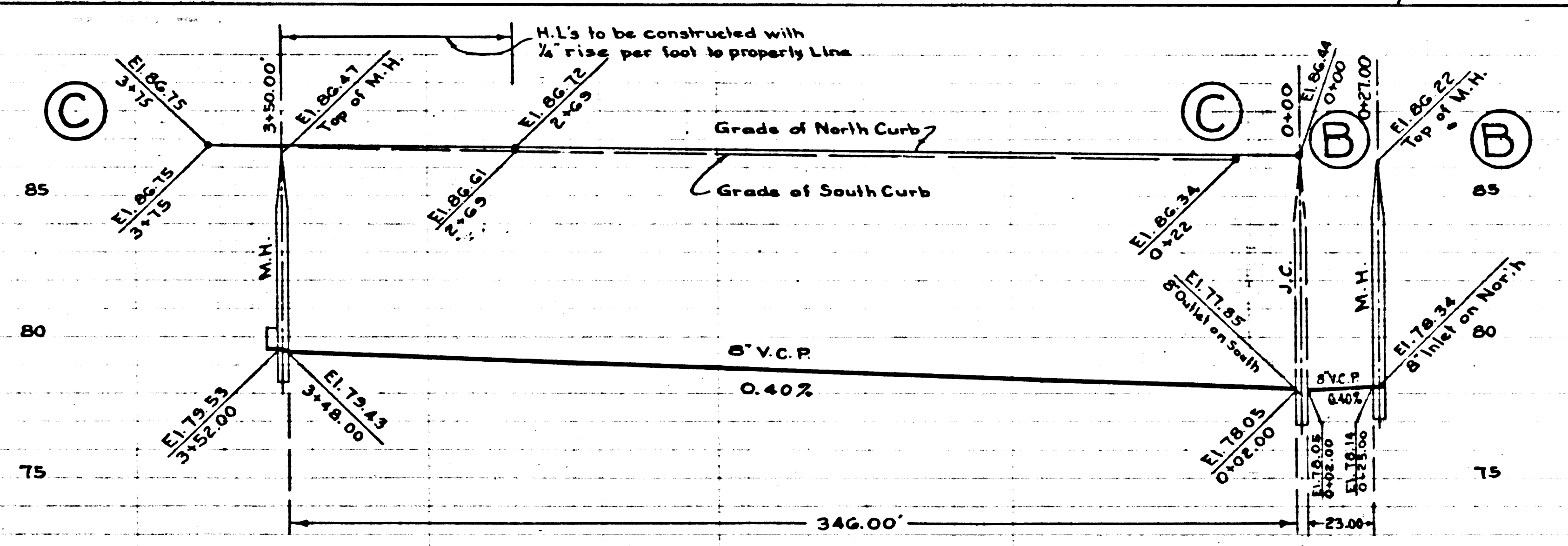
Trim Line

Trim Line

P.C. 2916
J.N. 0913.51
PAGE G

18,430

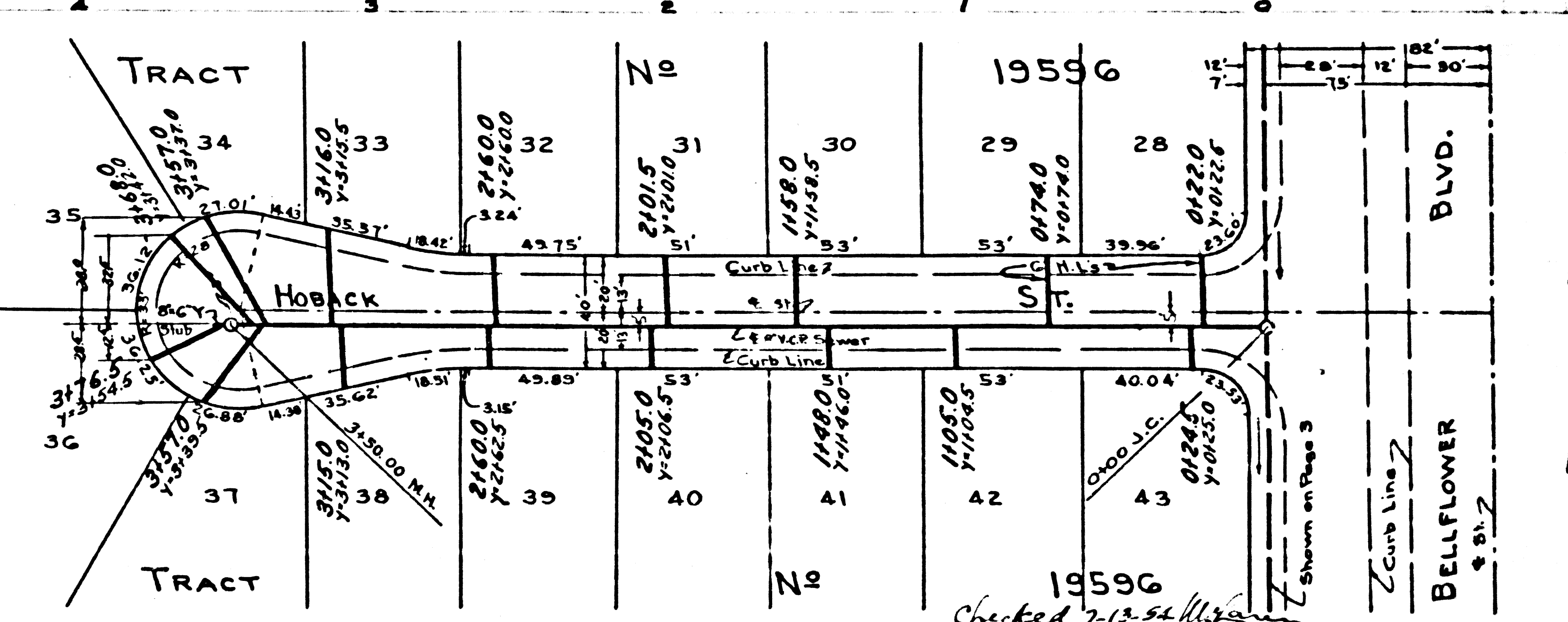
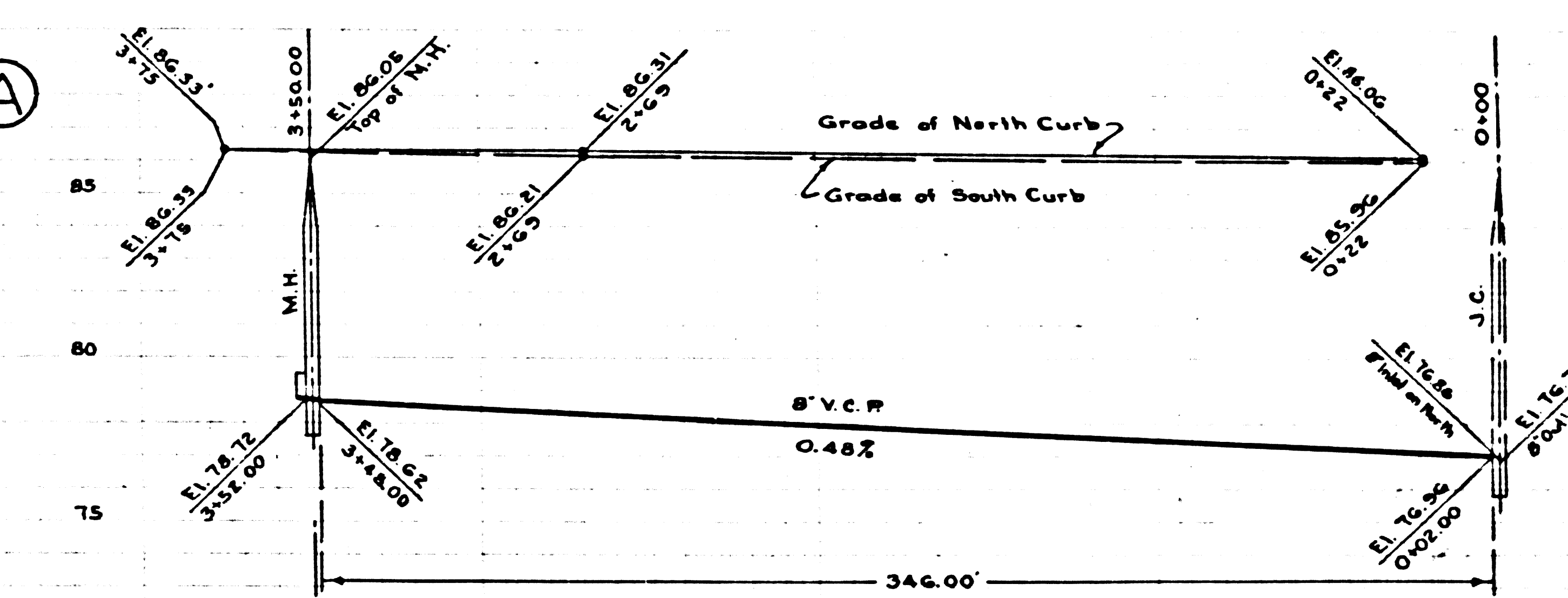
NO CHARGE FOR
CONNECTIONS



P.C. 2916
J.N. 0913.51
PAGE 5

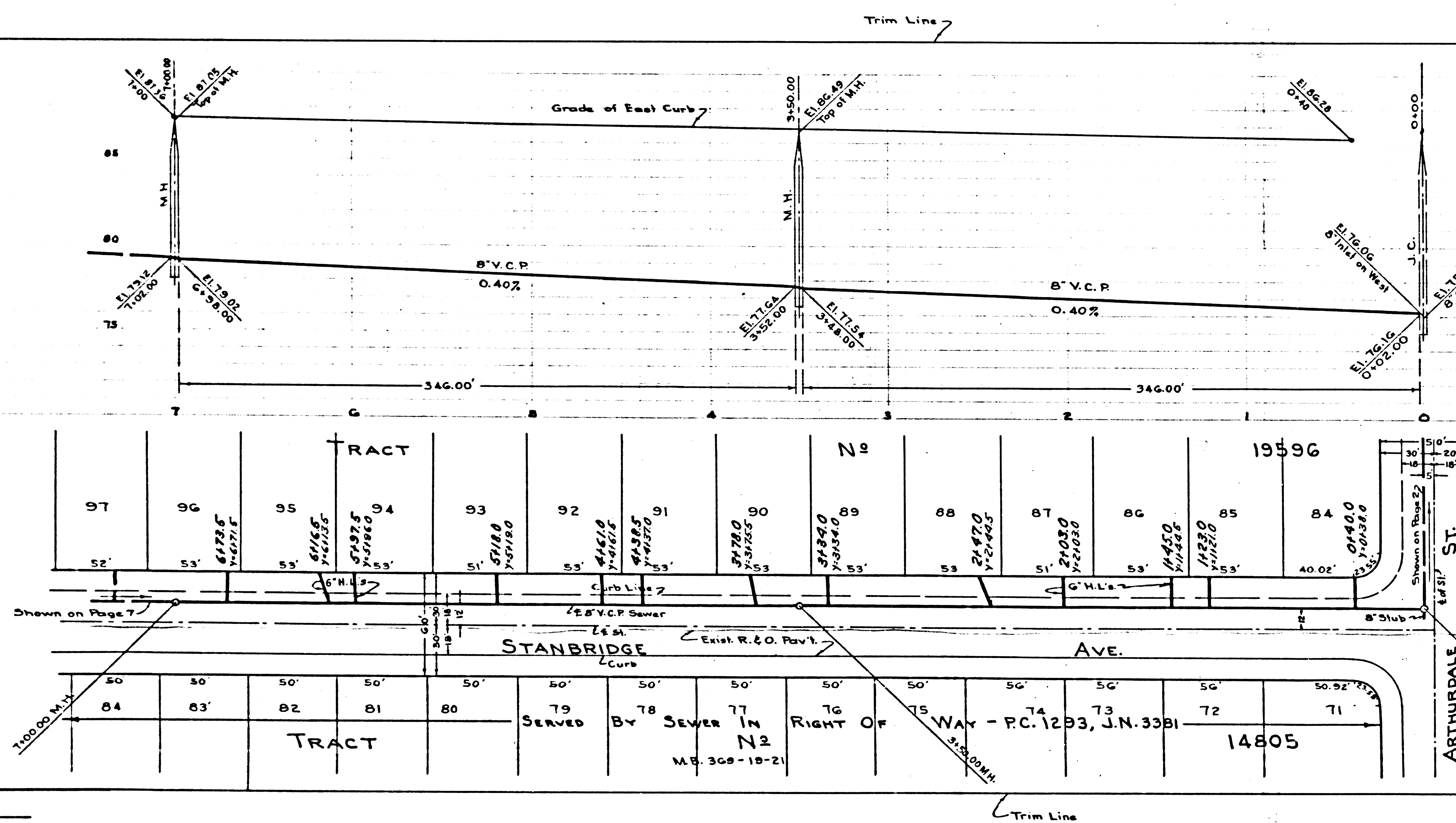
18,429

NO CHARGE FOR
CONNECTIONS



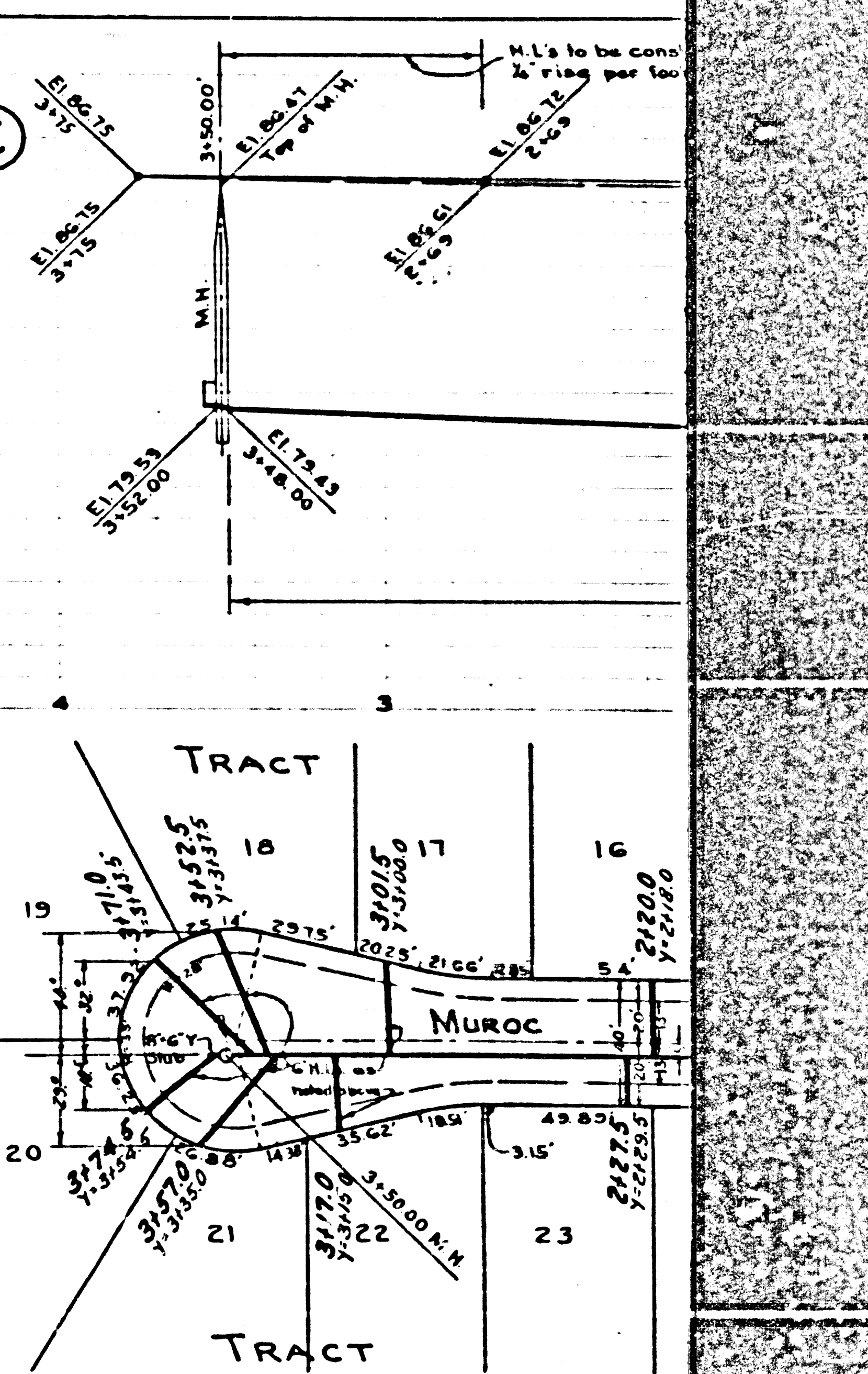
Checked 7-13-54

RL



P.C. 2916
 J.N. 0913.51
 PAGE G
 18,430
 NO CHARGE FOR CONNECTIONS

TRACT No. 19596													
97	96	95	94	93	92	91	90	89	88	87	86	85	84
52'	53'	55'	55'	51'	55'	55'	55'	55'	55'	55'	55'	55'	40.02'
50'	50'	50'	50'	50'	50'	50'	50'	50'	50'	50'	50'	50'	50.52'
84	83	82	81	80	79	78	77	76	75	74	73	72	71
TRACT SERVED BY SEWER IN RIGHT OF WAY - P.C. 1293, J.N. 3381 M.B. 308-18-21 14805													



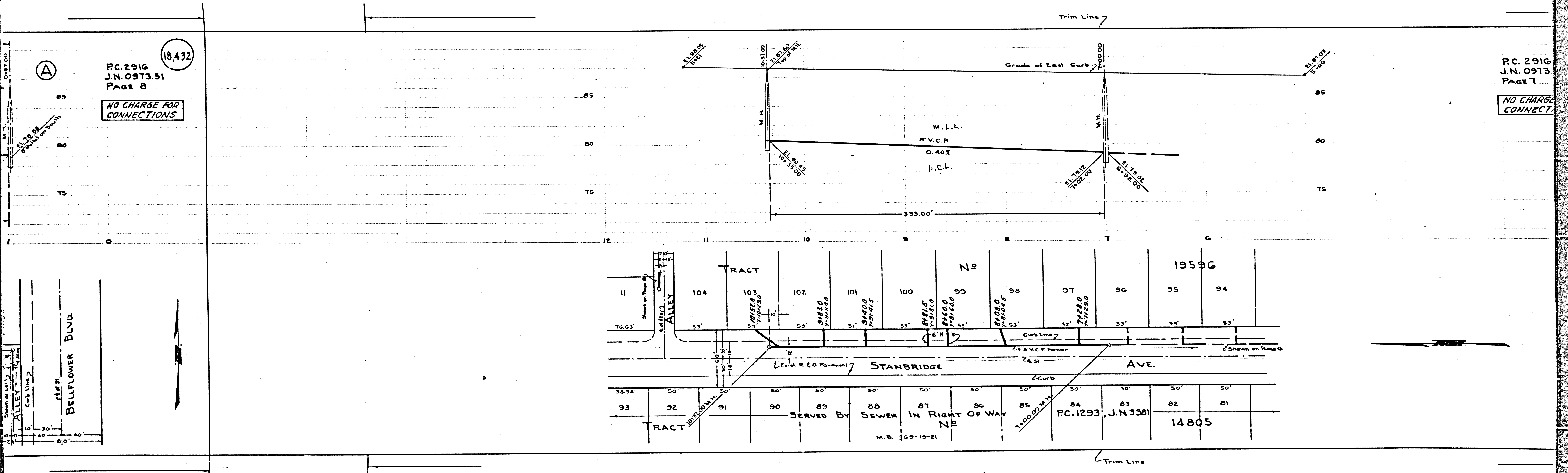
PC. 291G
J.N. 0913.51
PAGE 8

18,432

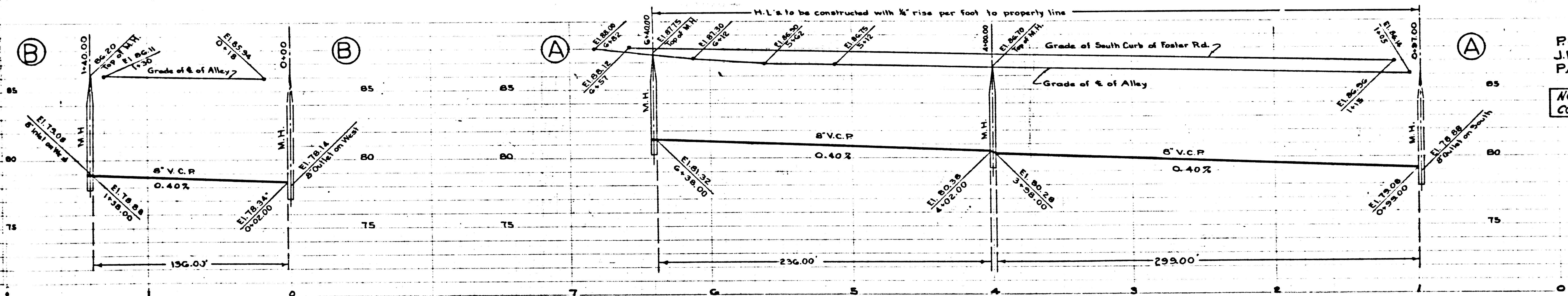
NO CHARGE FOR CONNECTIONS

PC. 291G
J.N. 0913
PAGE 7

NO CHARGE FOR CONNECTIONS



TRACT 19596											
No											
104	103	102	101	100	99	98	97	96	95	94	
55'	55'	55'	55'	55'	55'	55'	55'	55'	55'	55'	55'
TRACT 14805 SERVED BY SEWER IN RIGHT OF WAY No M.B. 363-19-21											
93	92	91	90	89	88	87	86	85	84	83	82
50'	50'	50'	50'	50'	50'	50'	50'	50'	50'	50'	50'
TRACT 14805 PC. 1293, J.N. 3381 14805											



PC. 2916
 J.N. 0913.51
 PAGE 8

NO CHARGE FOR CONNECTIONS

18,432

