

P.C. 2917
J.N. 1100.02
PAGE 2
DOUBLE SCALE

CHARGES
AS INDICATED

19,642

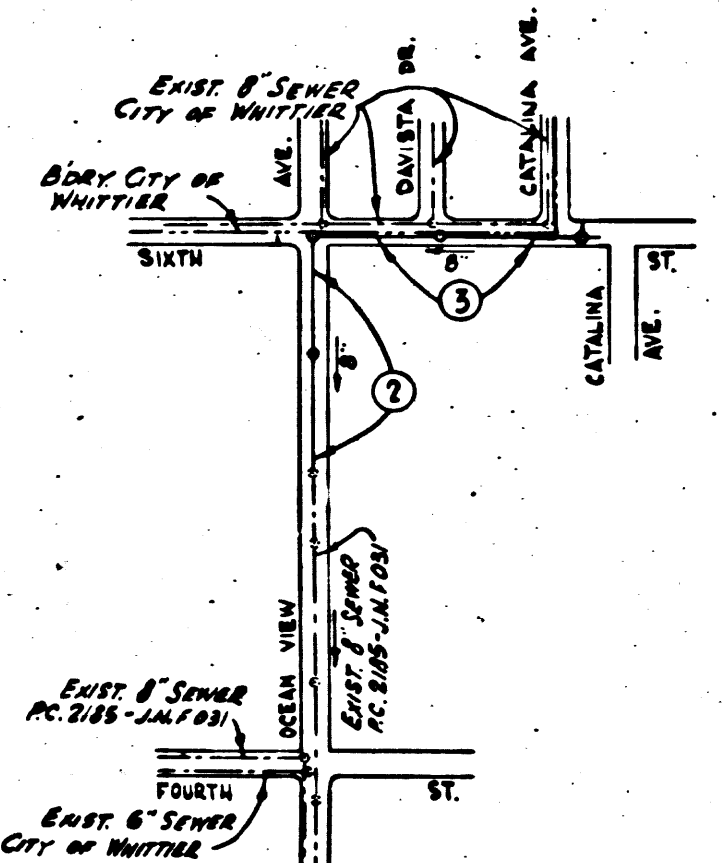
WHITTIER BLDG. DISTRICT OFFICE NO (II)

BENCH MARK NO 5
L.Q. 614 L. & T. center of curb
return at S.E. corner of Fourth
St & Catalina Ave.
ELEV. 336.605

NOTE:
Provide stakes on the property lines or property lines produced at right angles to the sewer line at the center line of each manhole.
No representative of the County Engineer will survey or layout any portion of the work. The owner or his authorized representative shall furnish the County Engineer with grade sheets and stations for all house laterals and Y branches and shall provide stakes for them at their proper locations with stationing plainly marked. Any change in location shall be requested in writing by the owner or his representative.
No revisions shall be made in these plans without the approval of the County Engineer.

1. Use standard manhole frames and covers, S-a-117.
2. Use standard strength pipe except as noted.
3. Use cement mortar for all vitrified clay pipe joints.
4. Resurface all trench within paved area to meet L.A. County Road Dept. or Calif. State Highway Dept. requirements in accordance with permit.
5. Encase four feet of sewer at points of interference with poles, S-a-119.
6. House lateral to be constructed with invert at property line as noted on plan.

7. Manhole tops in unimproved Rights-Of-Way to be 6" above finish grade.
8. For allowable leakage test, use Formula No. 1000, Spec's., Sec. 51.
9. All structures shall be brick sewer structures, S-a-104, or standard precast concrete manholes, per S-a-135.



INDEX MAP
SCALE: 1"=600'
P.C. 2917 J.N. 0973.61
W.S. 34

SHEET	PAGE
1	1-3

Approved by
Industrial Waste Division
By: *Arthur Pickett* 7/64
Division Engineer

**COLLECT CHARGES
AS INDICATED**
at Union 7-7-54

Revised 1-28-55
McLaren

PROFILE, ALIGNMENT AND GRADE OF
SANITARY SEWERS
TO BE CONSTRUCTED IN
OCEAN VIEW AVENUE
&
SIXTH STREET

PRIVATE CONTRACT NO. 2917
W.S. 34
SHEET 1 OF 1 SHEET
JANUARY, 1954

PREPARED IN THE OFFICES OF
STANDARD OIL COMPANY OF CALIFORNIA
By: *Walter K. D...* Reg. C. E. No. 678
FOR LEGEND SEE PLAN NO. S-a-64

NOTE:
Grades to which this improvement is to be constructed are shown on plans and profiles. Grade points for top of curbs, center line of streets, or center line of alleys are shown by circles on profiles. At all points between designated points the grade shall be established so as to conform to a straight line drawn between said designated points.
Elevations are in feet above U.S.G.S. datum or mean sea level.
This drawing and the data hereon are hereby made a part of the specifications.
Work shall be constructed according to specifications on file in the office of the County Engineer and shall be prosecuted only in the presence of the County Engineer.
Before work can be started, the contractor must obtain a permit to excavate in County streets from the L.A. County Road Dept., 108 W. 2nd St. and make a deposit with the County Engineer, 733 L.A. County Engineering Building, sufficient to cover the cost of construction inspection and record plans.
Approval of this plan by the County of Los Angeles does not constitute a representation as to the accuracy of the location or the existence or non-existence of any underground utility, pipe, or structure within the limits of this project. This note applies to all sheets.
If work is to be done in a State Highway, a permit must be obtained from the State of California, Division of Highways, 120 South Spring Street.

COUNTY OF LOS ANGELES, CALIFORNIA
Approved, William J. Fox, County Engineer
Approved, A. M. Rawn
CHIEF ENGINEER, SAN. DIST. NO. 18
By: *A.P. Collins* Sanitation Engineer
Checked By: *P. K...* Office Engineer
Office of County Engineer, Reg. C. E. No. 7840.

P.C. 2917
J.N. 1100.02
PAGE 1
DOUBLE SCALE

19,641

PC 2917
SIXTH STREET ET AL
19-1-54

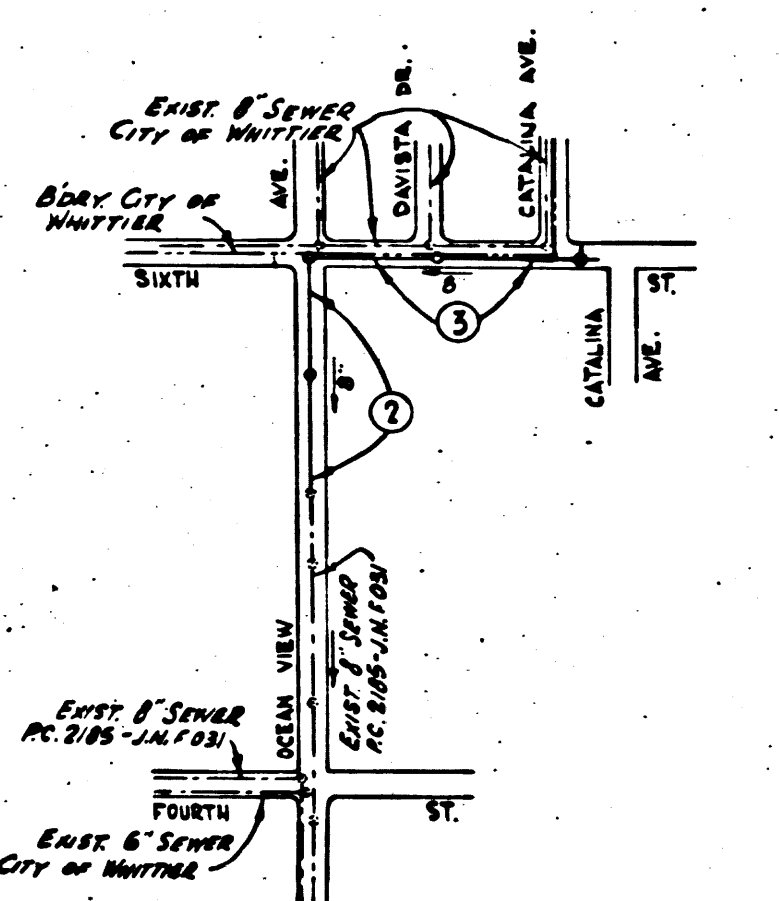
P.C. 2917
J.N. 1100.02
PAGE 2
DOUBLE SCALE

CHARGES
INDICATED

19,642

WHITTIER BLDG. DISTRICT OFFICE NO (II)

BENCH MARK NO 5
L.Q. 614 L. & T. center of curb
return at S.E. corner of Fourth
St & Catalina Ave.
ELEV. 336.605



INDEX MAP
SCALE: 1"=60'
P.C. 2917 J.N. 0973.61
W.S. 34

- NOTE:
Provide stakes on the property lines or property lines produced at right angles to the sewer line at the center line of each manhole.
No representative of the County Engineer will survey or layout any portion of the work. The owner or his authorized representative shall furnish the County Engineer with grade sheets and stations for all house laterals and Y branches and shall provide stakes for them at their proper locations with stationing plainly marked. Any change in location shall be requested in writing by the owner or his representative.
No revisions shall be made in these plans without the approval of the County Engineer.
1. Use standard manhole frames and covers, S-a-117.
 2. Use standard strength pipe except as noted.
 3. Use cement mortar for all vitrified clay pipe joints.
 4. Resurface all trench within paved area to meet L.A. County Road Dept. or Calif. State Highway Dept. requirements in accordance with permit.
 5. Encase four feet of sewer at points of interference with poles, S-a-119.
 6. House lateral to be constructed with invert at property line as noted on plan.
 7. Manhole tops in unimproved Rights-Of-Way to be 6" above finish grade.
 8. For allowable leakage test, use Formula No. 1, Spec's., Sec. 51.
 9. All structures shall be brick sewer structures, S-a-104, or standard precast concrete manholes, per S-a-155.

SHEET	PAGE
1	1-3

Approved by
Industrial Waste Division
By: *William J. Fox*
Division Engineer

COLLECT CHARGES
AS INDICATED
7-7-54

checked 1-28-55
(1)
TRIM LINE

PROFILE, ALIGNMENT AND GRADE OF SANITARY SEWERS TO BE CONSTRUCTED IN OCEAN VIEW AVENUE & SIXTH STREET

PRIVATE CONTRACT NO. 2917
W. S. 34
SHEET 1 OF 1 SHEET
Scale: VERT. 1"=8'
HORIZ. 1"=40'
JANUARY, 1954
PREPARED IN THE OFFICES OF
STANDARD OIL COMPANY OF CALIFORNIA
By: *Mattie K. Johnson*
FOR LEGEND SEE PLAN NO. S-a-64

P.C. 2917
J.N. 1100.02
PAGE 1
DOUBLE SCALE

19,641

NOTE:
Grades to which this improvement is to be constructed are shown on plans and profiles. Grade points for top of curbs, center line of streets, or center line of alleys are shown by circles on profiles. At all points between designated points the grade shall be established so as to conform to a straight line drawn between said designated points.
Elevations are in feet above U.S.G.S. datum or mean sea level.
This drawing and the data hereon are hereby made a part of the specifications.
Work shall be constructed according to specifications on file in the office of the County Engineer and shall be prosecuted only in the presence of the County Engineer.
Before work can be started, the contractor must obtain a permit to excavate in County streets from the L.A. County Road Dept., 108 W. 2nd St. and make a deposit with the County Engineer, 733 L.A. County Engineering Building, sufficient to cover the cost of construction inspection and record plans.
Approval of this plan by the County of Los Angeles does not constitute a representation as to the accuracy of the location of or the existence or non-existence of any underground utility, pipe, or structure within the limits of this project. This note applies to all sheets.
If work is to be done in a State Highway, a permit must be obtained from the State of California, Division of Highways, 120 South Spring Street.

COUNTY OF LOS ANGELES, CALIFORNIA
Approved, William J. Fox, County Engineer
Approved, A. M. Rawn
CHIEF ENGR. CO. SAN. DIST. NO. 18
By: *A.P. Collins*
Sanitation Engineer
Checked By: *A.M. Rawn*
Office of County Engineer, Reg. C. E. No. 12660.

P.C. 2917
SIXTH STREET ET AL
19,641

P.C. 2917
J.N. 1100.02
PAGE 3
DOUBLE SCALE

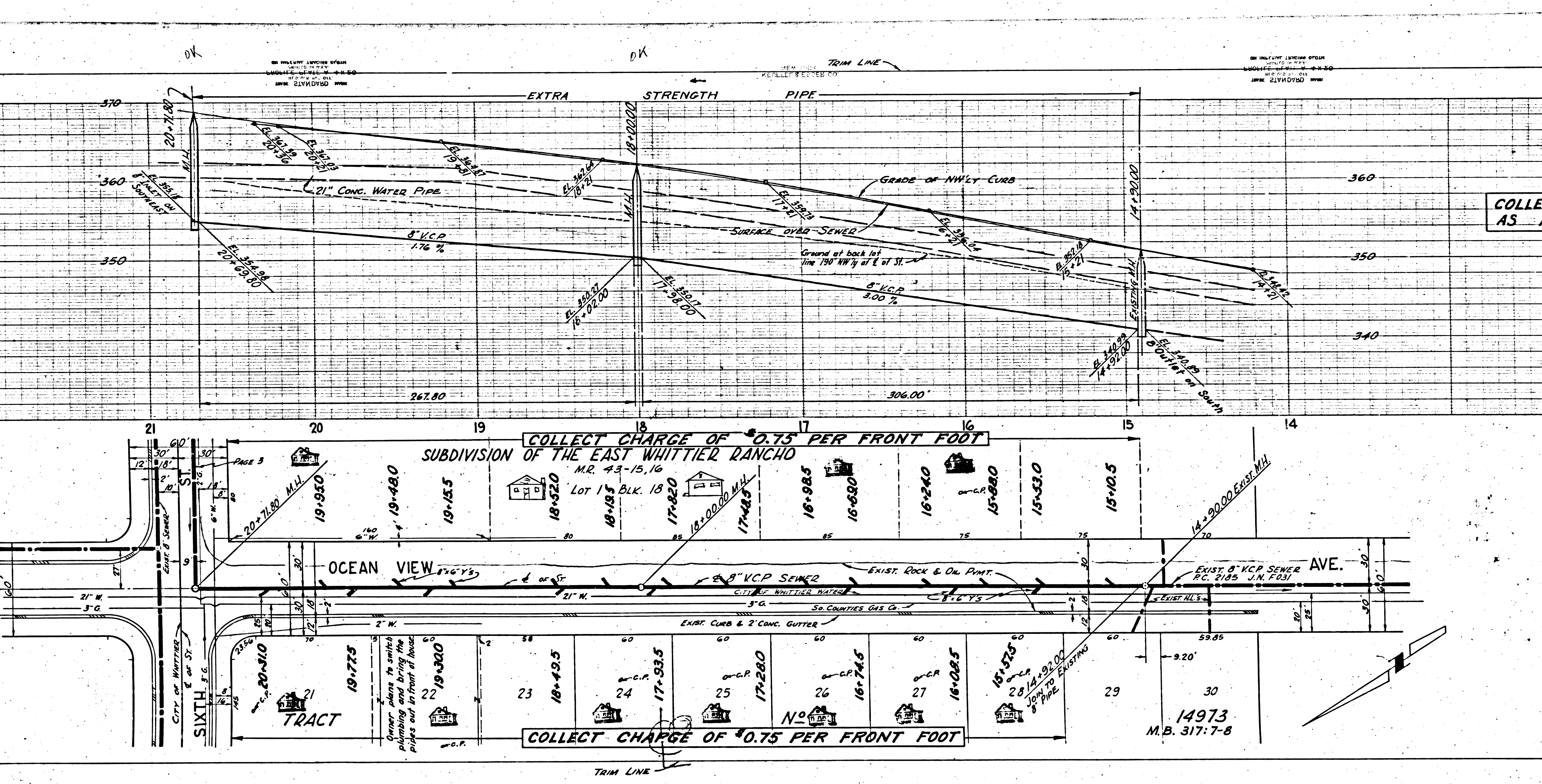
P.C. 2917
J.N. 1100.02
PAGE 2
DOUBLE SCALE

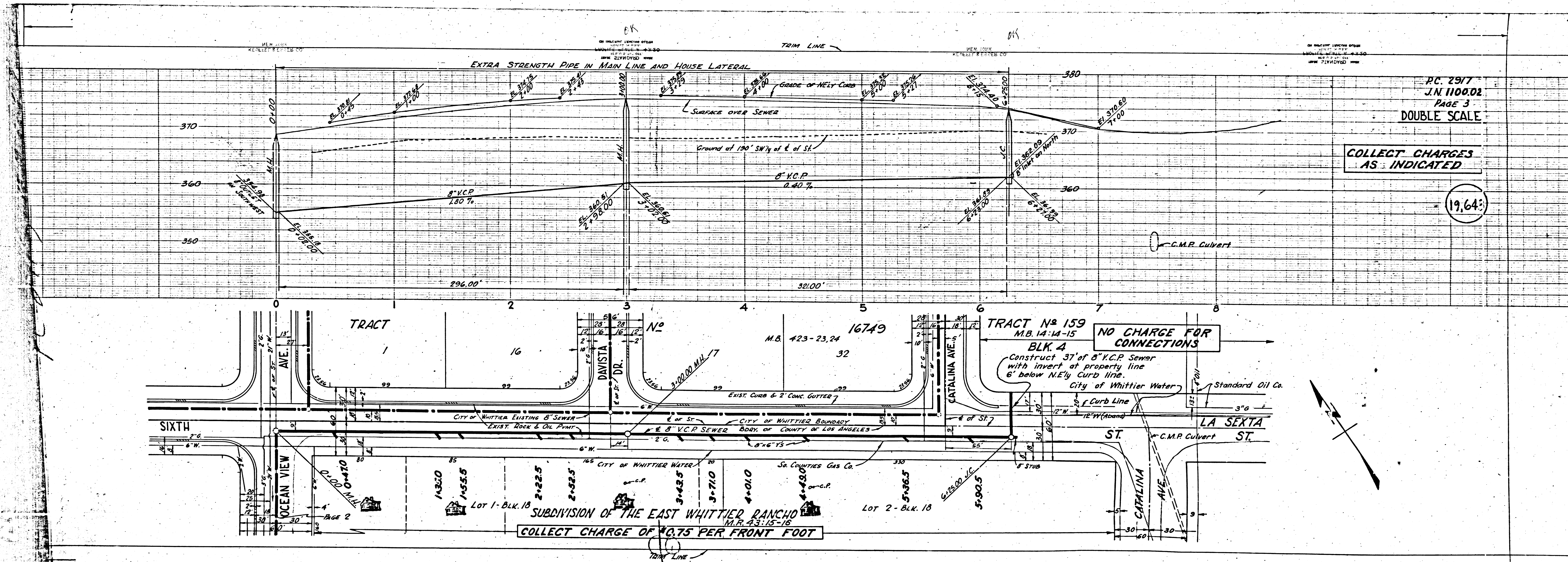
LECT CHARGES
AS INDICATED

COLLECT CHARGES
AS INDICATED

19,643

19,642





PC 2517
 J.N. 1100.02
 PAGE 3
 DOUBLE SCALE

COLLECT CHARGES
 AS INDICATED

1964

NO CHARGE FOR
 CONNECTIONS

Construct 37' of 8\"/>

COLLECT CHARGE OF \$0.75 PER FRONT FOOT

