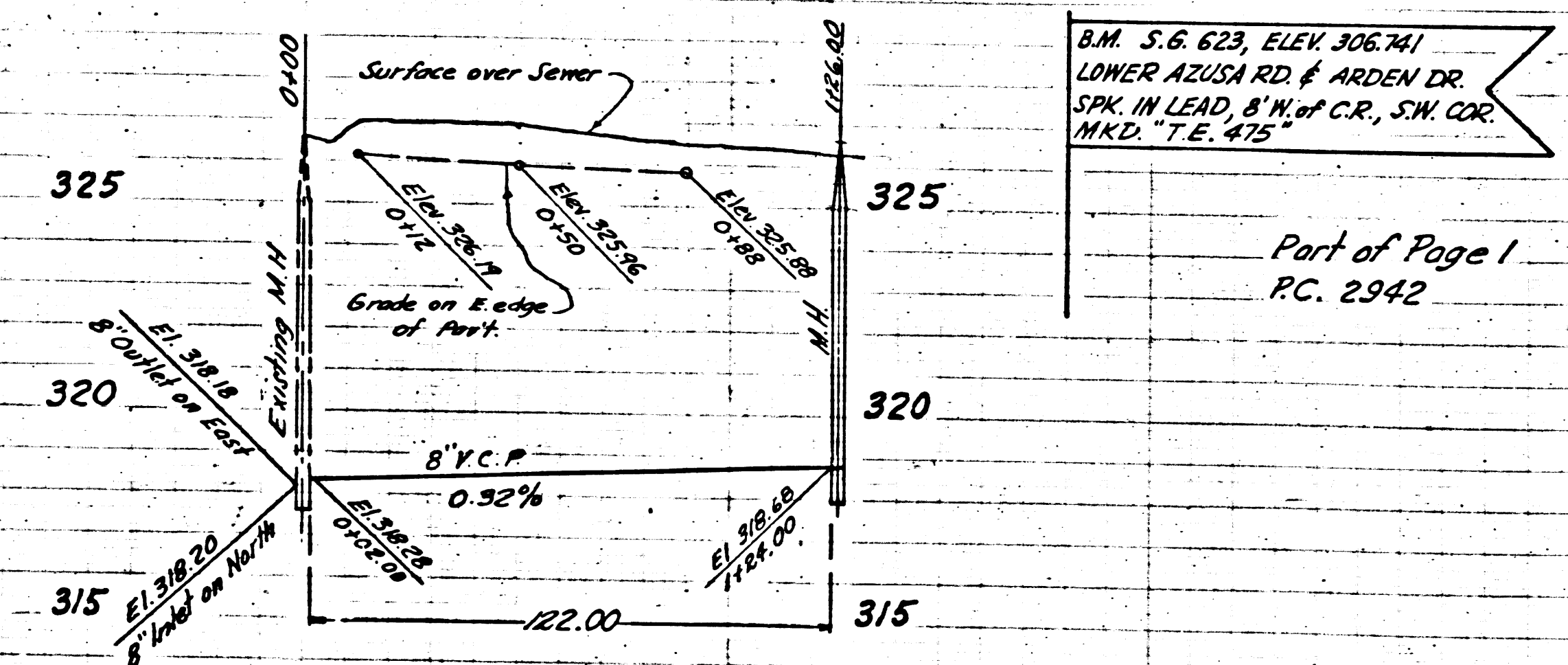


PC 2942



B.M. S.G. 623, ELEV. 306.741  
 LOWER AZUSA RD. & ARDEN DR.  
 SW. IN LEAD, S.W. of C.R., SW. COR.  
 MKD. T.E. 415

Part of Page 1  
 PC. 2942

TEMPLE CITY BLDG. DIST. NO. 5

PROFILE, ALIGNMENT AND GRADE OF  
 SANITARY SEWERS  
 TO BE CONSTRUCTED IN  
 ARDEN DRIVE

PC. 2942  
 J.N. 2942  
 Page 1

(21,457)

- (1) USE STANDARD MANHOLE FRAME AND COVER, S-a-117
- (2) USE STANDARD STRENGTH PIPE
- (3) USE CEMENT MORTAR FOR ALL VITRIFIED CLAY PIPE JOINTS
- (4) RESURFACE ALL TRENCH WITHIN PAVED AREA TO MEET LOS ANGELES COUNTY ROAD DEPT REQUIREMENTS IN ACCORDANCE WITH PERMITS.
- (5) CONSTRUCT HOUSE LATERALS WITH INVERT AT PROPERTY LINE 6 FEET BELOW CURB GRADE. Except as noted.
- (6) ALL STRUCTURES SHALL BE BRICK SEWER STRUCTURES, S-a-104
- (7) CONSTRUCT TOPS OF ALL STRUCTURES IN RIGHTS OF WAY 6" ABOVE FINISHED GRADE
- (8) ENCASE FOUR FEET OF SEWER AT POINTS OF INTERFERENCE WITH POLES, S-a-119
- (9) FOR ALLOWABLE LEAKAGE TEST, USE FORMULA NO. 1, SPECS. SEC. 51

NOTE:  
 NO REPRESENTATIVE OF THE COUNTY ENGINEER WILL SURVEY OR LAY OUT ANY PORTION OF THE WORK.  
 THE OWNER OR HIS AUTHORIZED REPRESENTATIVE SHALL FURNISH THE COUNTY ENGINEER WITH GRADE SHEETS  
 AND STATIONS FOR ALL HOUSE LATERALS AND Y BRANCHES AND SHALL PROVIDE STAKES FOR THEM AT THEIR  
 PROFILE LOCATIONS WITH STATIONING PLAINLY MARKED. ANY CHANGE OF LOCATION SHALL BE REQUESTED IN WRITING  
 BY THE OWNER OR HIS REPRESENTATIVE.  
 NO REVISIONS SHALL BE MADE IN THESE PLANS WITHOUT APPROVAL OF THE COUNTY ENGINEER.

NOTE:  
 PROVIDE STAKES ON THE PROPERTY LINES OR PROPERTY LINES PRODUCED, AT RIGHT ANGLES TO THE SEWER LINE  
 AT THE CENTER LINE OF EACH MANHOLE

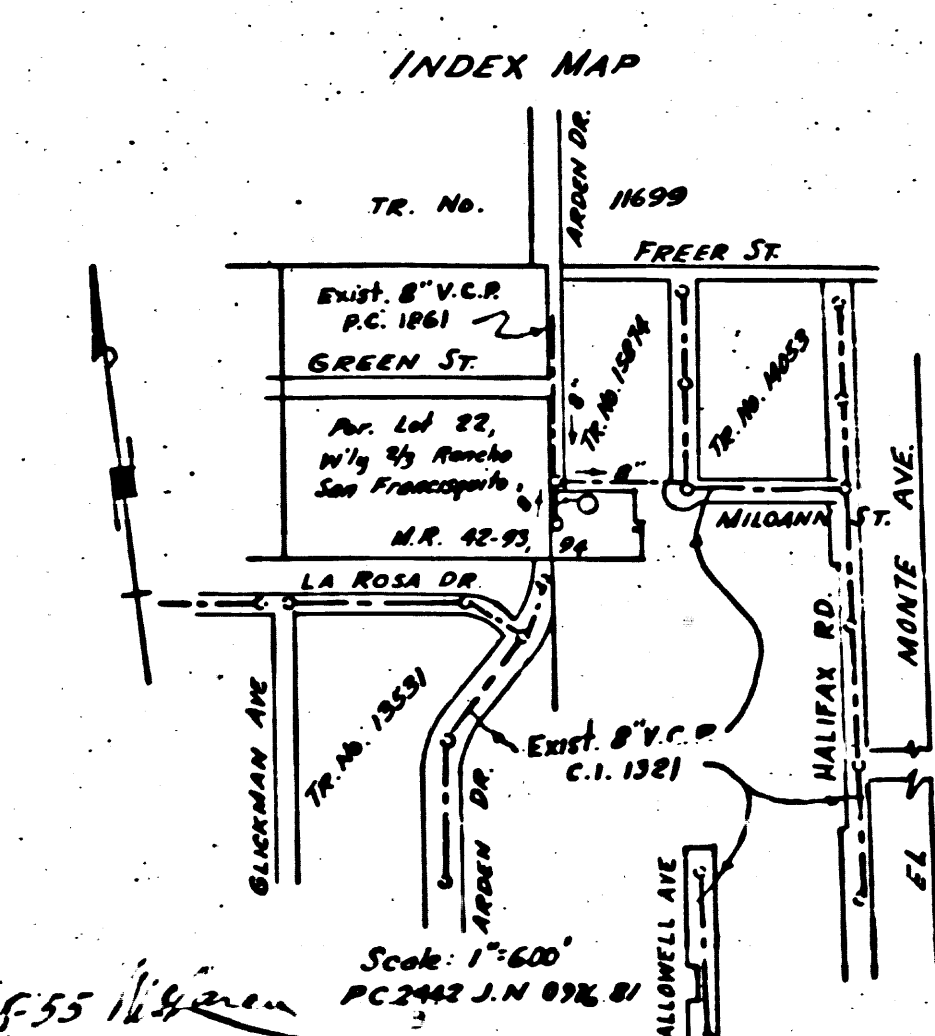
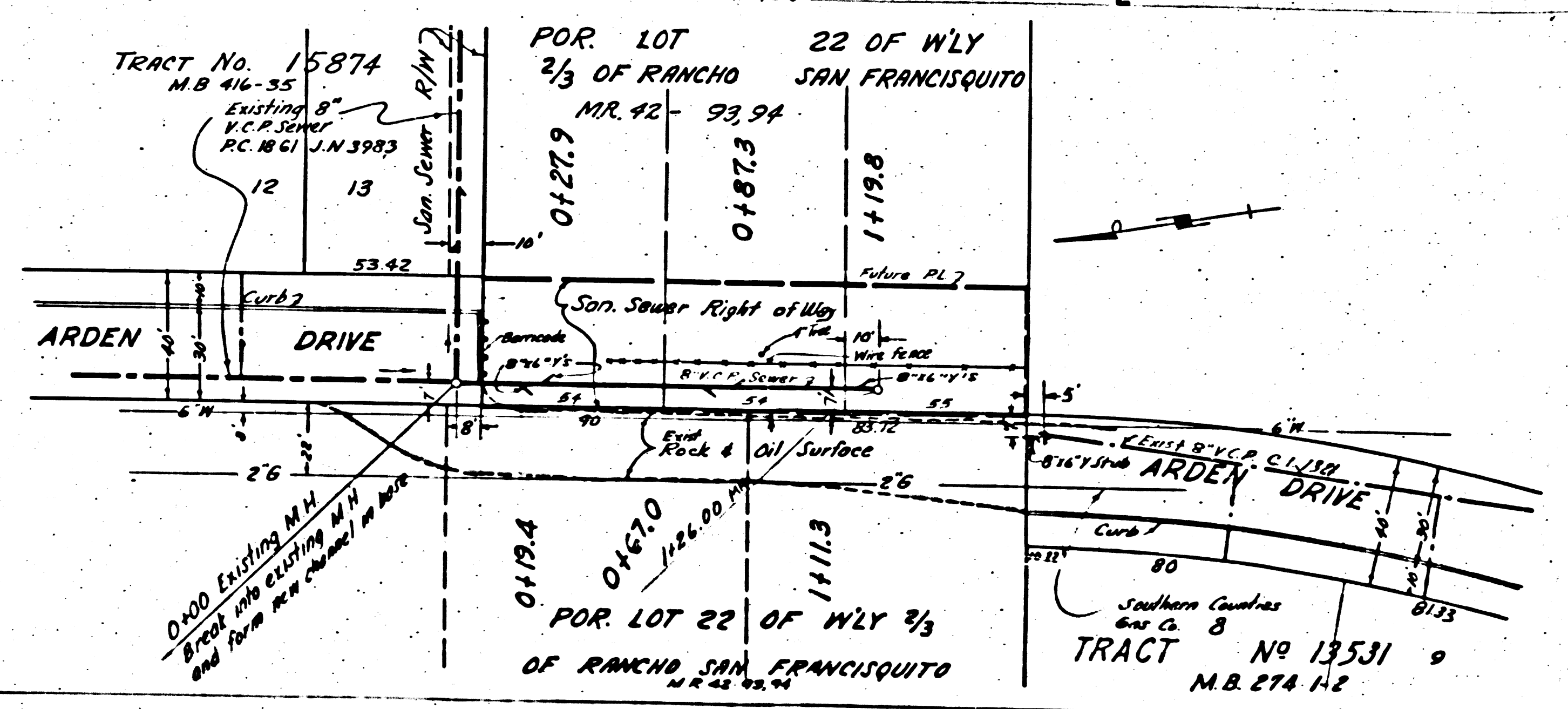
PRIVATE CONTRACT NO. 2942  
 W.S. 44  
 SHEET NO. 1 OF 1 SHEET

SCALE: VERT. 1"=4'  
 HORIZ. 1"=40'

FEBRUARY 1954

PREPARED IN THE OFFICES OF  
 FRANK HOLZ, LICENSED SURVEYOR

by: Neal Sarnett  
 Reg. C.E. No. 4399



SHEETS	PAGES
1	1

NO CHARGE FOR CONNECTIONS  
Revised 6-15-54

FOR LEGEND  
 SEE PLAN NO. S-a-64

NOTE:  
 GRADES TO WHICH THIS IMPROVEMENT IS TO BE CONSTRUCTED ARE SHOWN ON PLANS AND PROFILE.  
 GRADE POINTS FOR TOP OF CURB, CENTER LINE OF STREET, OR CENTER LINE OF ALLEY ARE SHOWN BY  
 CIRCLES ON PROFILES. AT ALL POINTS BETWEEN DESIGNATED POINTS THE GRADE SHALL BE ESTABLISHED  
 SO AS TO CONFORM TO A STRAIGHT LINE DRAWN BETWEEN SAID DESIGNATED POINTS.  
 ELEVATIONS ARE IN FEET ABOVE U.S.G.S. DATUM OR MEAN SEA LEVEL.  
 THIS DRAWING AND THE DATA HEREON ARE HEREBY MADE A PART OF THE SPECIFICATIONS.  
 WORK SHALL BE CONSTRUCTED ACCORDING TO SPECIFICATIONS ON FILE IN THE OFFICE OF THE  
 COUNTY ENGINEER AND SHALL BE PROSECUTED ONLY IN THE PRESENCE OF THE COUNTY ENGINEER.  
 BEFORE WORK CAN BE STARTED, THE CONTRACTOR MUST OBTAIN A PERMIT TO EXCAVATE IN  
 COUNTY STREETS FROM THE L.A. COUNTY ROAD DEPT. IN A SECOND STREET AND MAKE A  
 DEPOSIT WITH THE COUNTY ENGINEER, ROOM 224, 253 SO. BROADWAY, SUFFICIENT TO COVER THE  
 COST OF CONSTRUCTION INSPECTION AND RECORD PLANS.  
 IF WORK IS TO BE DONE IN A STATE HIGHWAY, A PERMIT MUST BE OBTAINED FROM THE STATE OF CALIF. BUREAU  
 OF HIGHWAYS, 1000 SPRING STREET.  
 APPROVAL OF THIS PLAN BY THE COUNTY OF LOS ANGELES DOES NOT CONSTITUTE A REPRESENTATION AS TO THE  
 ACCURACY OF THE LOCATION OF, OR THE EXISTENCE OR NON-EXISTENCE OF ANY UNDERGROUND UTILITY, PIPE  
 OR STRUCTURE WITHIN THE LIMITS OF THIS PROJECT.

COUNTY OF LOS ANGELES, CALIFORNIA.

APPROVED A. Collins SANITATION ENGINEER  
 REVISION APPROVED A. P. Collins 7-8-55

APPROVED A.M. RAWN COUNTY ENGINEER  
 BY [Signature] COUNTY ENGINEER  
 7-8-55

CHECKED BY [Signature] JUNE 15, 1954  
 OFFICE OF COUNTY ENGINEER, Rm. 224, 253 SO. BROADWAY

PC. 2942

checked 2-26-55 1/28 am  
 Trim Line