

P.C. 2946

VI	LA	167	B	70	24
----	----	-----	---	----	----

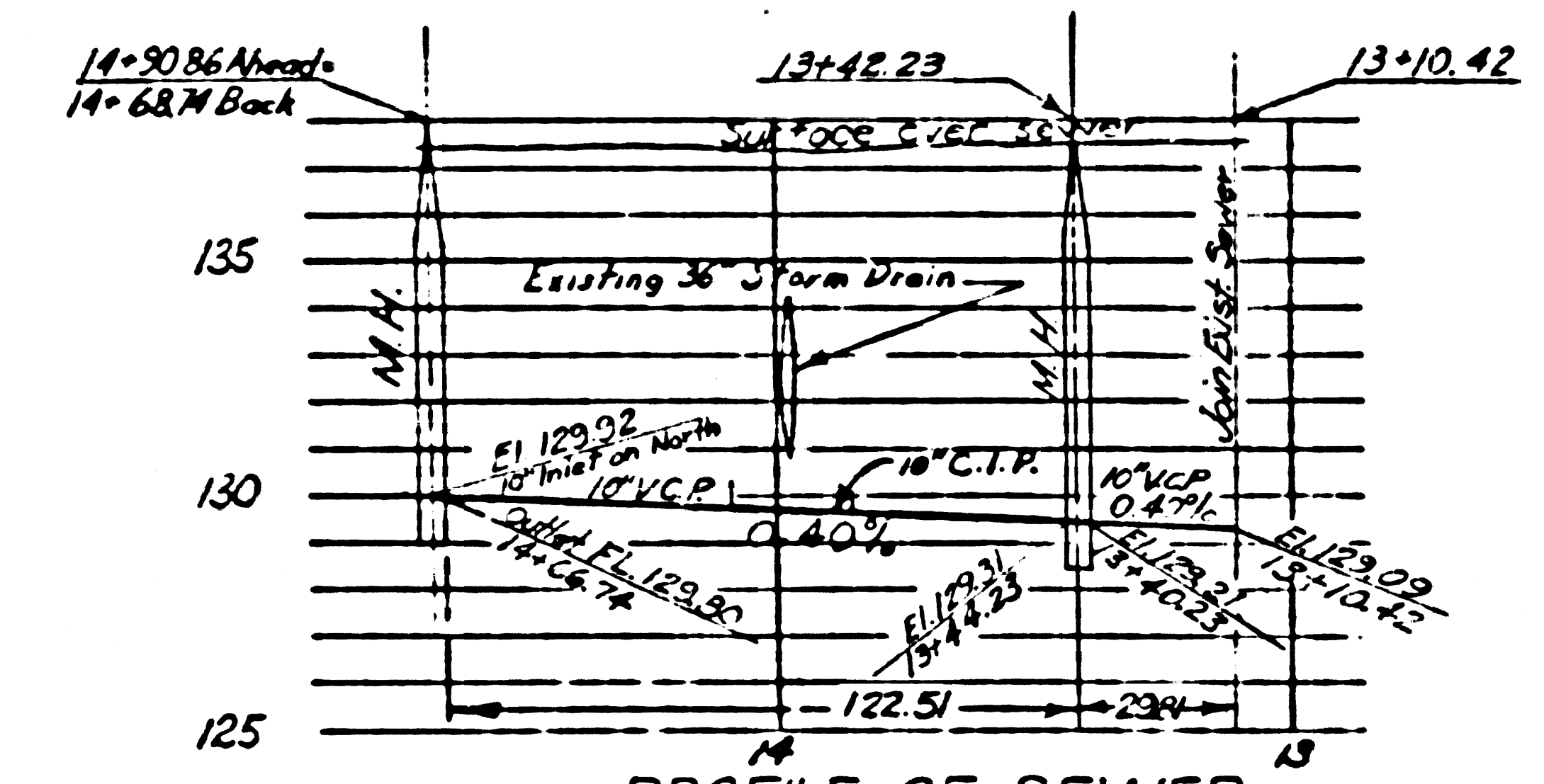
John A. Lambie
 June 20, 1955
John A. Lambie
 Sanitation Engr.

FIRESTONE BLDG DISTR. N° 1

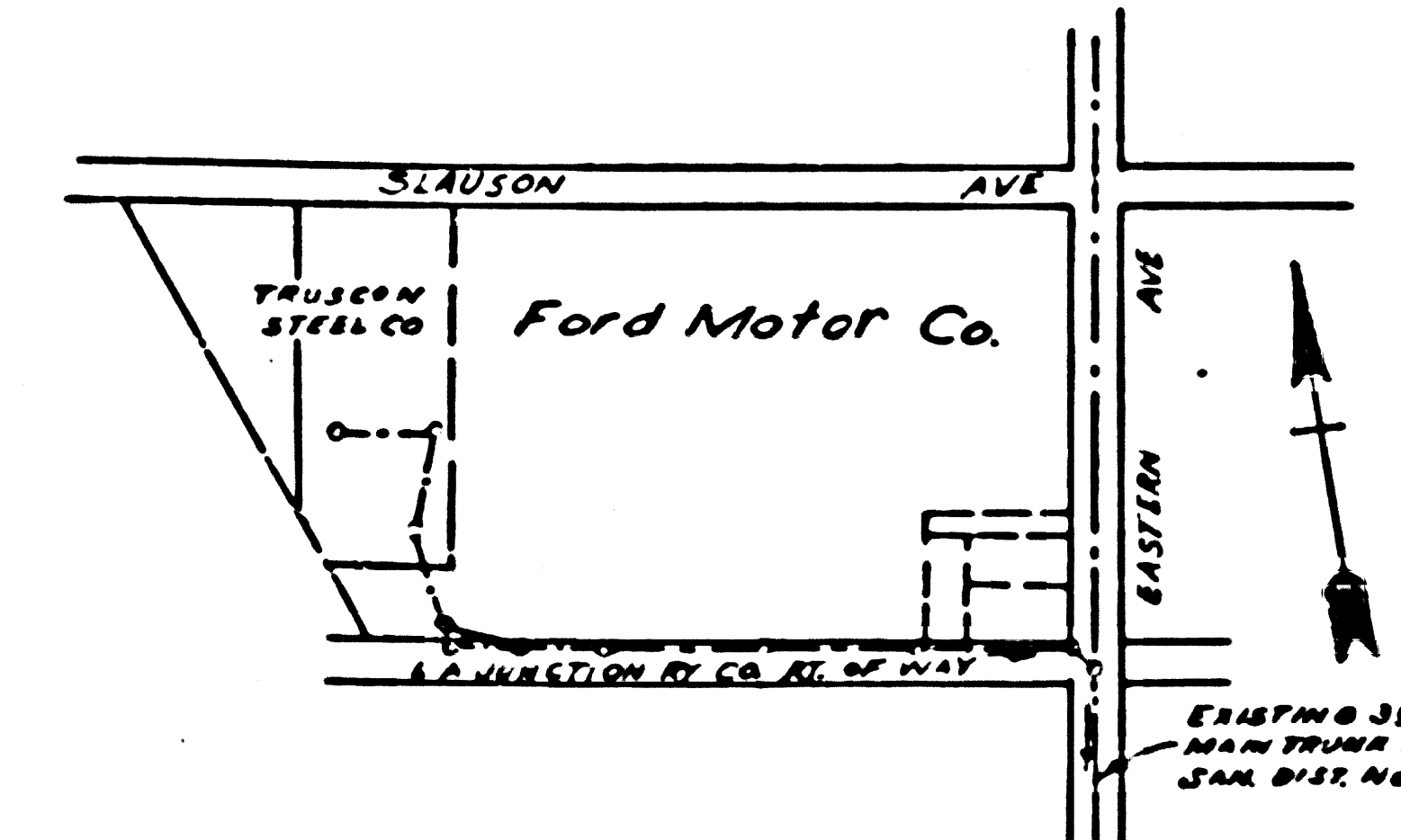
B.M. #131-B-51
 Elev. 137.97
 P.K. 1011 N.W. cor. base B.P.C.L. tower #18

A.M. Rapp - Chief Engineer of
 County Sanitation District No. 2
 Approved *A.M. Rapp*
 Chief Engr.

Wm. J. Fox - County Engineer
 Approved *Wm. J. Fox* 1-10-55
 Sanitation Engr.



PROFILE OF SEWER
Scale: Vertical 1"=4', Horizontal 1"=40'



FOR REVISION
P.C. 2946

CHECKED *R.P. Lambie* 1-22-56
 Office of County Engineer
 Reg. C.E. No. 7850

John A. Lambie - County Engineer
 Approved *A.P. Collins* 1-26-56
 Sanitation Engr.

REVISION: Relocate the proposed sewer manhole from station 13+10.42 to station 13+42.23. Join the existing 10" V.C.P. sewer at station 13+10.42 with a 100' radius tangent to existing sewer.

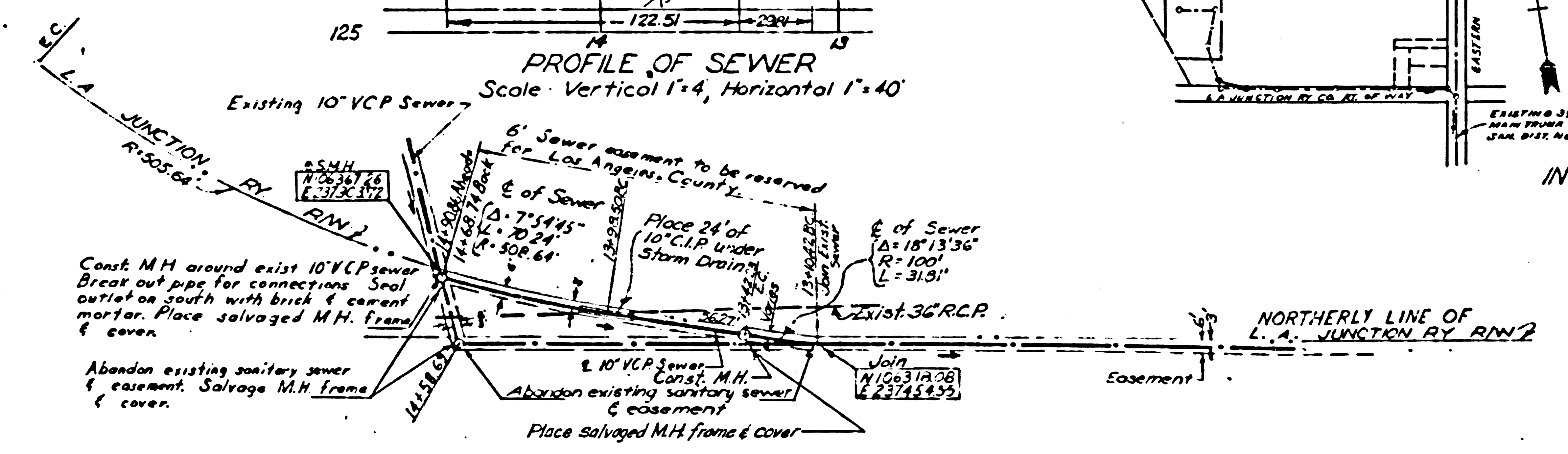
22,319

SANITARY SEWER
IN L.A. JUNCTION RY. CO'S. RIGHT OF WAY WEST OF EASTERN AVE.

See L.A. County Private Contract Number 209

NOTE: Brick Sewer M.H. shall be constructed according to L.A. County Standard No. 5-a-104.

P.C. 2946 - J.N. 0977.51



PLAN
Scale: 1"=40'

LEGEND
 Existing sewer ————
 Proposed sewer ————

checked 3-22-56 *John A. Lambie* **SANITARY SEWERS**

STATE	FEDERAL PROJECT NO.	PLAN	SHEET	TOTAL SHEETS
CALIF.				

B.M. #1051-B-51
Elev. 122.24
P.K. rail N.W. cor. B.P.E.L. tower #8,
60' S. of E. Clara St.

B.M. #1061-B-51
Elev. 122.24
P.K. rail N.W. cor. B.P.E.L. tower #9

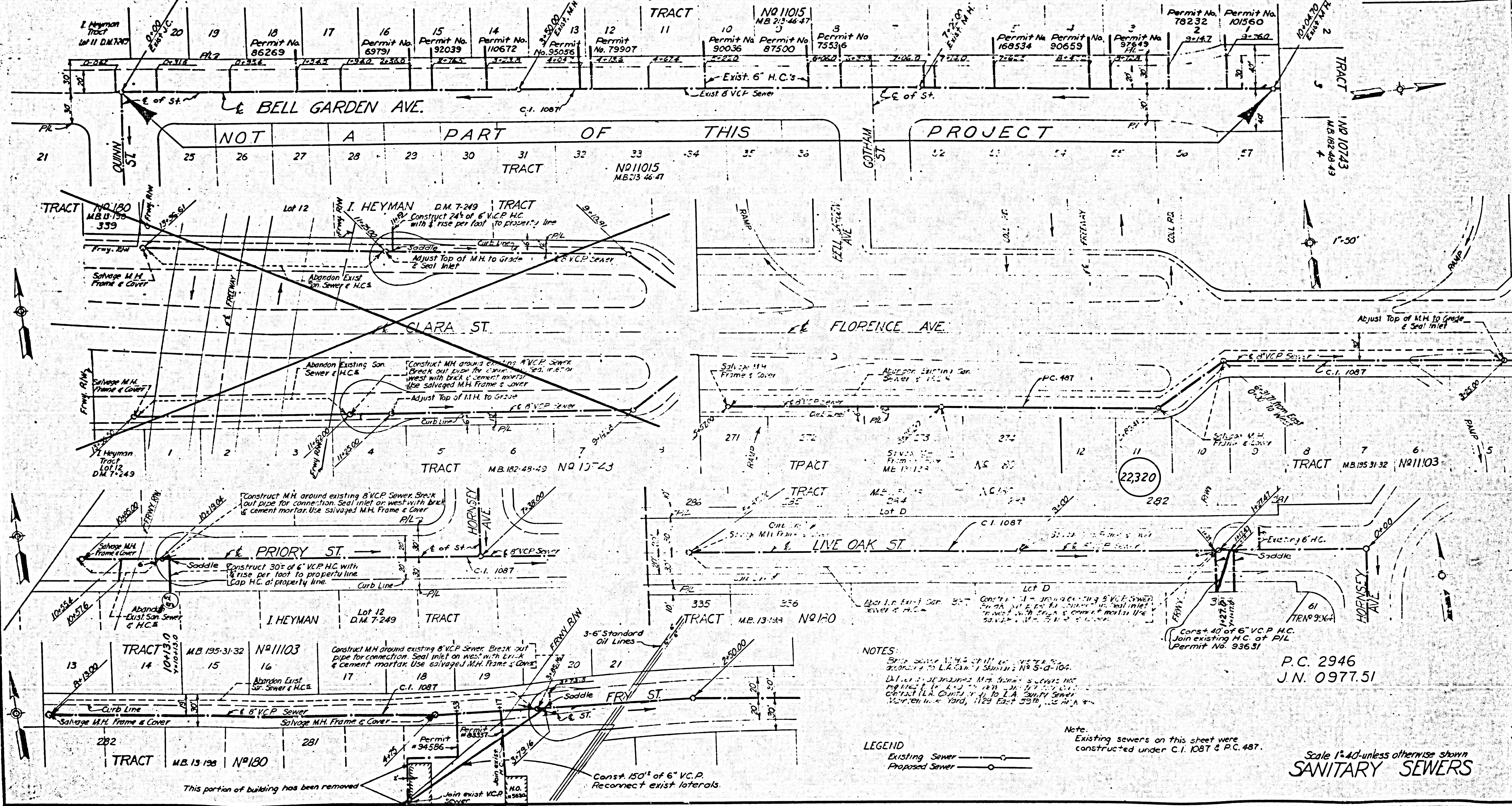
B.M. #1071-B-51
Elev. 126.06
P.K. rail N.W. cor. B.P.E.L. tower #11,
300' S. of E. Florence Ave.

A.M. Rowin - Chief Engineer of
County Sanitation District No. 2
Approved: *J. P. Matthews*
Office Engineer

Wm. J. Fox - County Engineer
Approved: *J. P. Collins* 1-14-55
Sanitation Engineer

NO.	DATE	REVISION
1	1-14-55	AS SHOWN

Cap all H.C.'s on the West side of Bell Garden Ave. - (H.C.'s 6' Deep)
at the curb line except those shown as not being connected



NOTES:
Sewer lines 14" & 18" shall be constructed according to L.A. County Sanitation No. 5-a-102.
All manhole frames & covers shall be constructed in accordance with L.A. County Sanitation No. 5-a-102.
Manhole in yard, 1129 East 59th, Los Angeles.

LEGEND
Existing Sewer ———
Proposed Sewer - - - -

P.C. 2946
J.N. 0977.51

Scale 1"=40' unless otherwise shown
SANITARY SEWERS

BM 101-B-51
Elev. 116.06
P.M. 101' N.W. cor. B.P.L. tower #11
300' N. of Florence Ave.

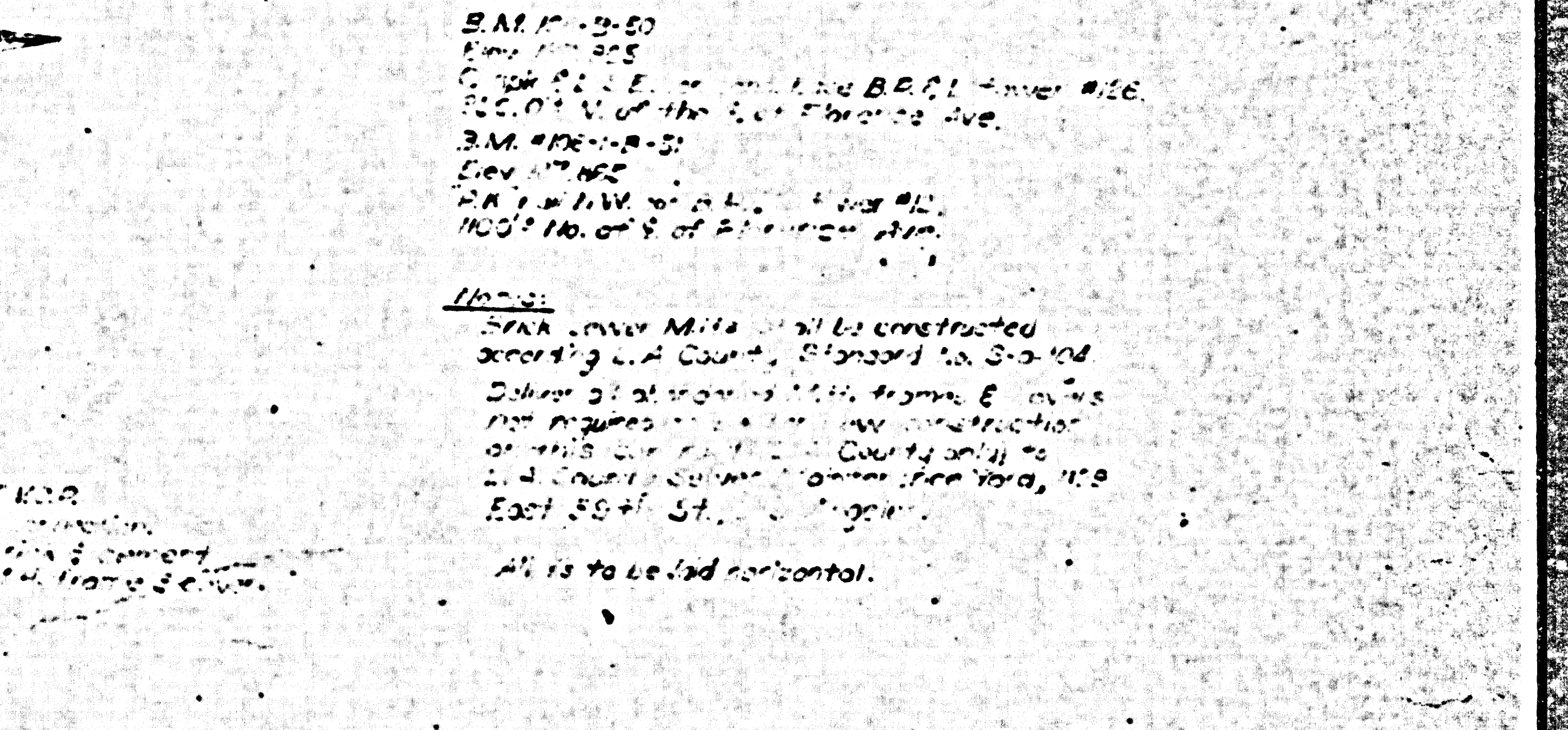
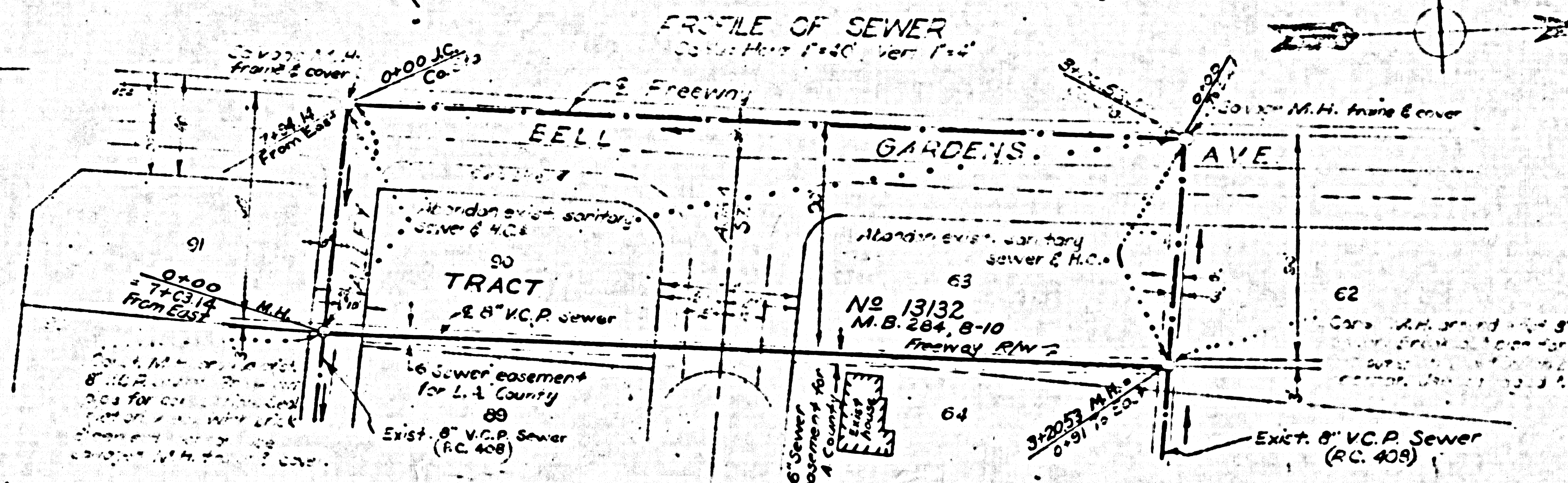
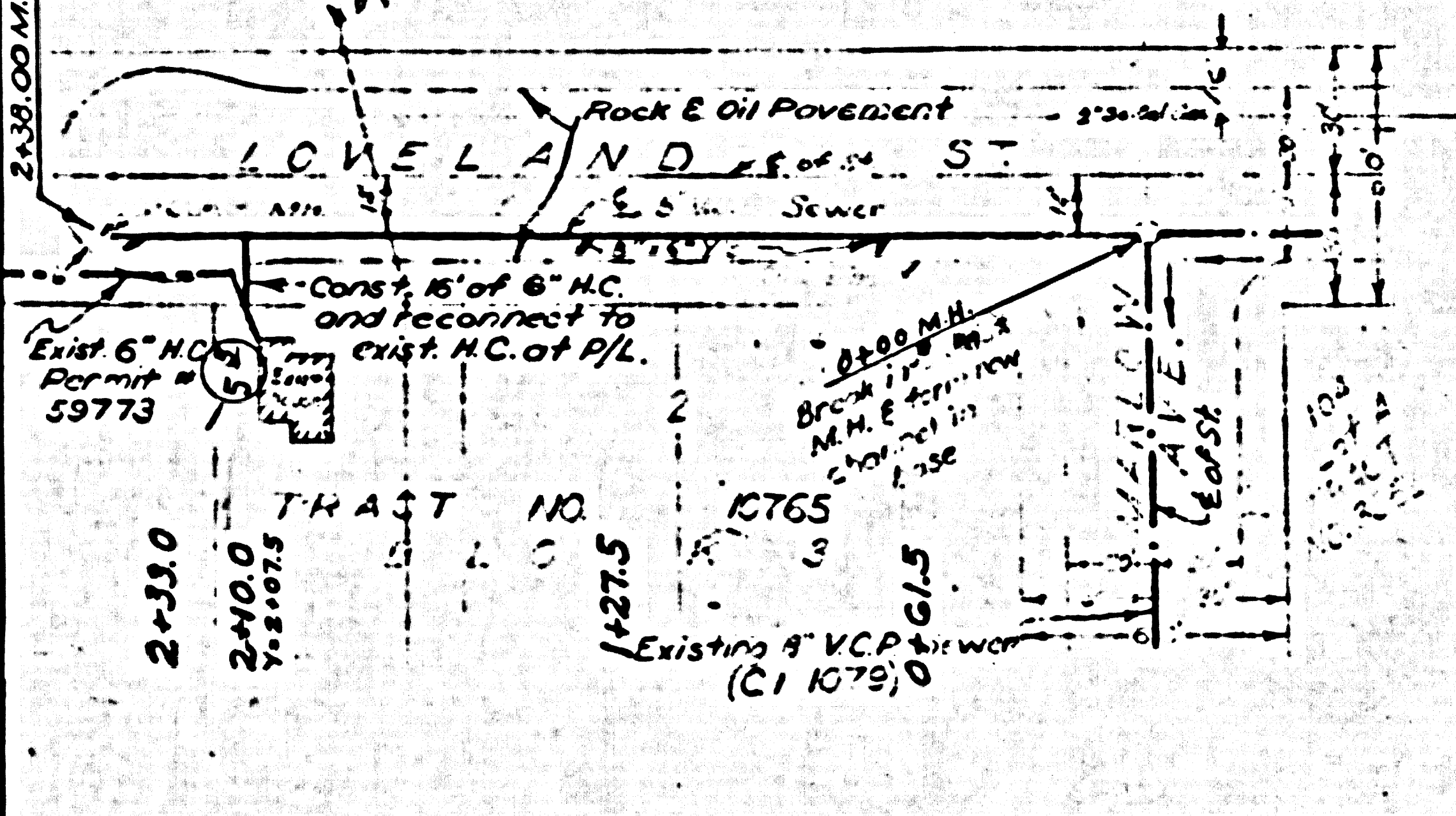
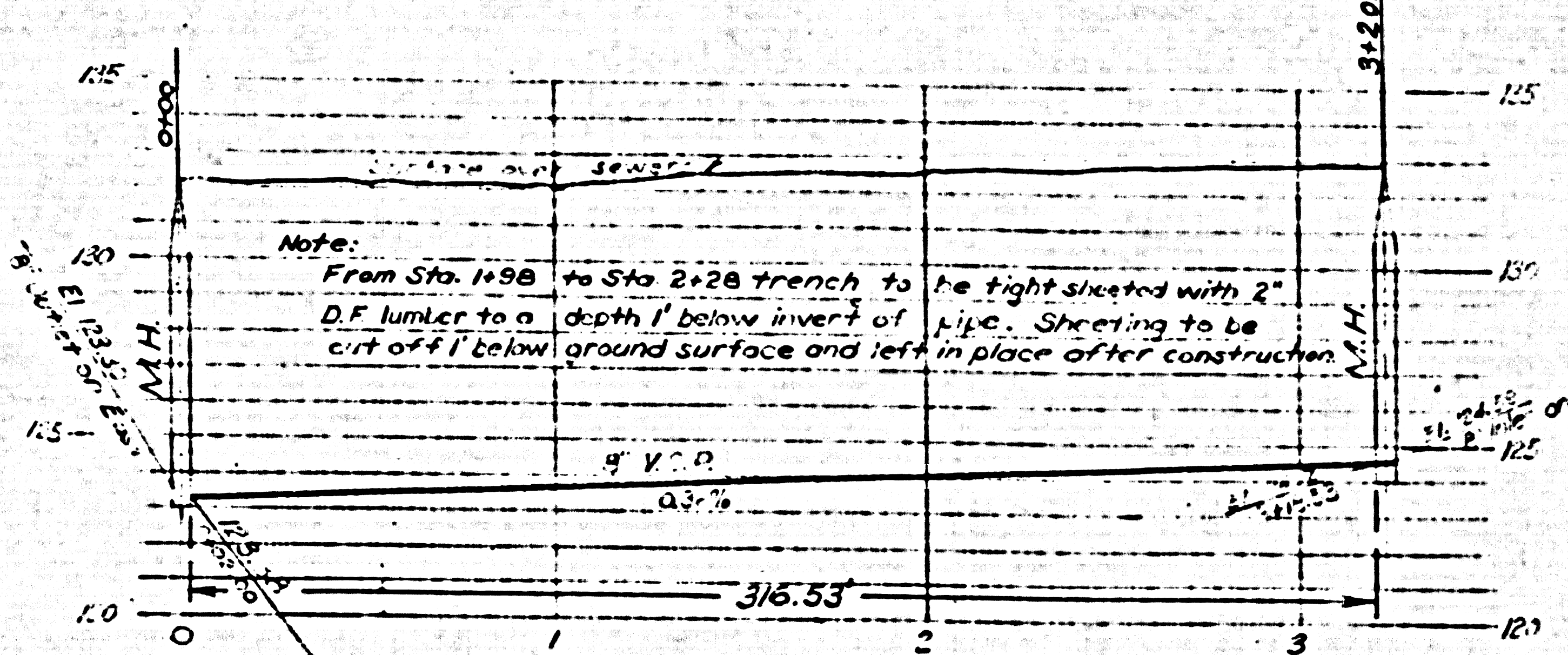
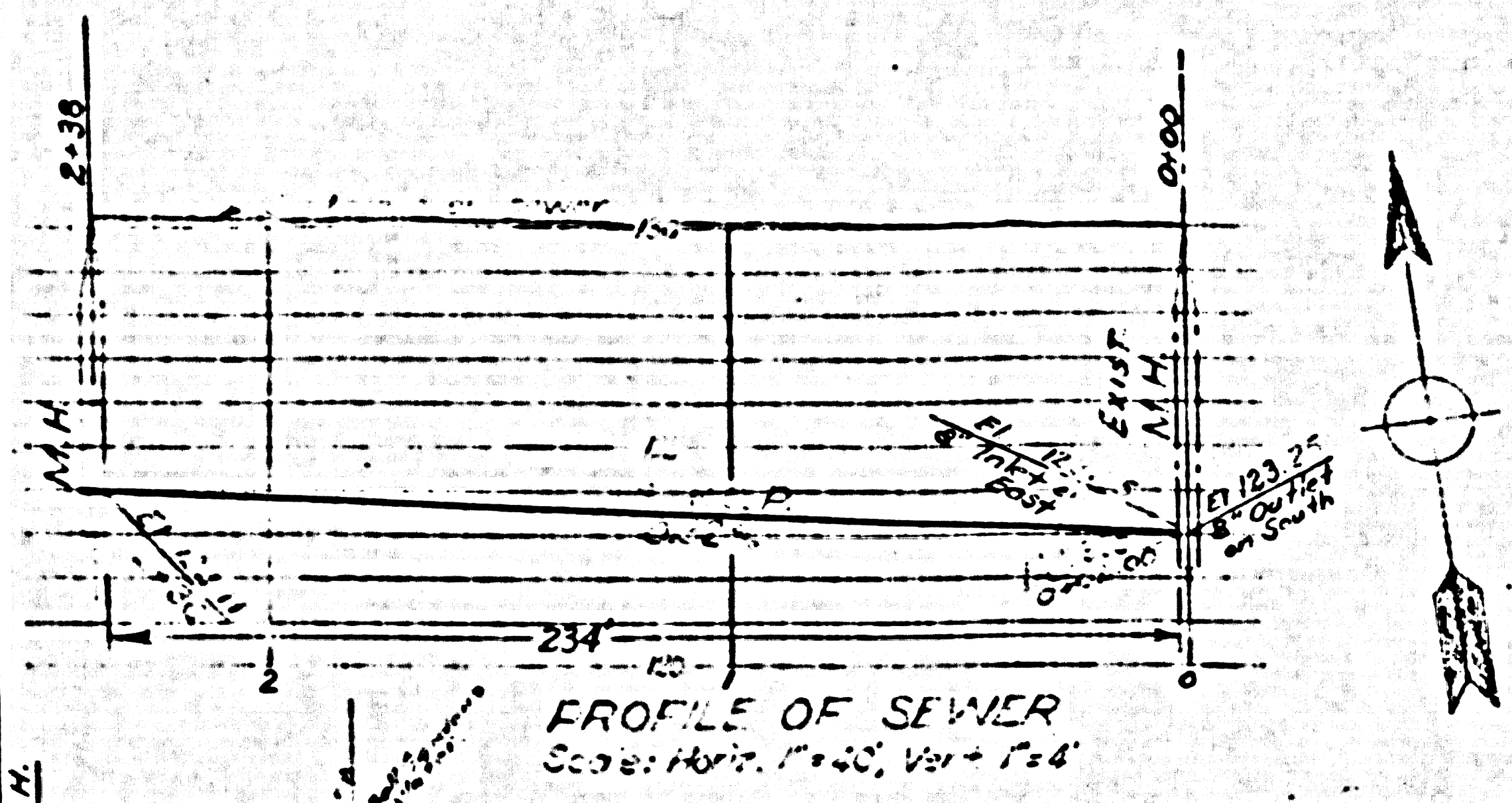
Wm. J. Fox - County Engineer
A.P. Collins - 1-14-55
L. Pathman
D. Pathman

22321

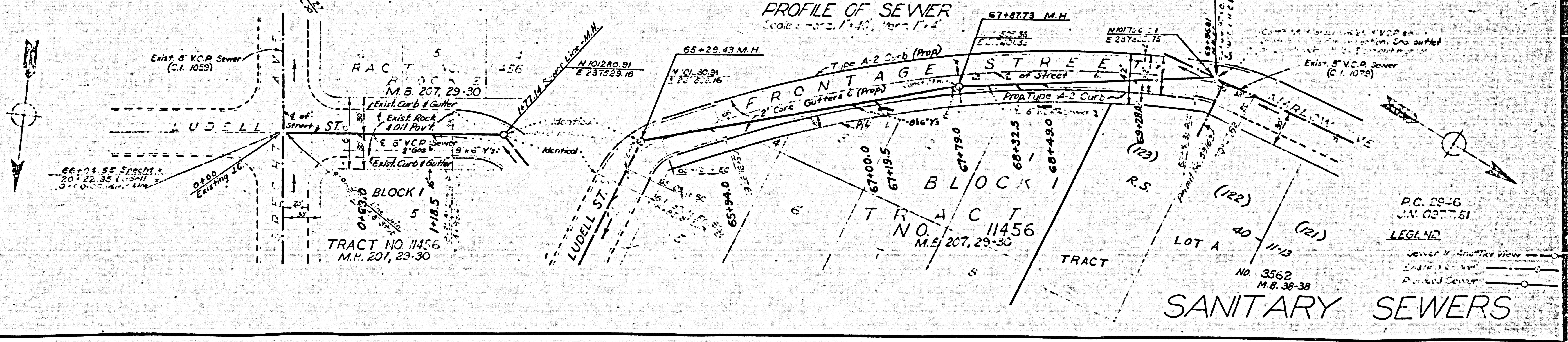
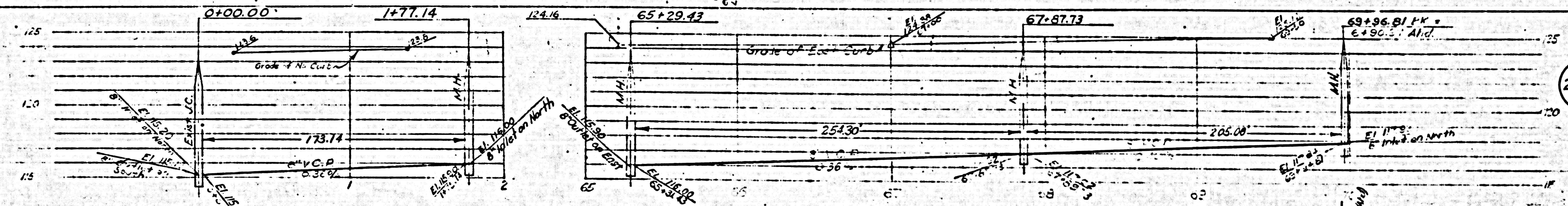
BM 107-P-51
Elev. 116.06
P.M. 101' N.W. cor. B.P.L. tower #11
300' N. of Florence Ave.
E.M. #17-P-50
Elev. 115.54
L.S. 101' N.W. cor. B.P.L. tower #11
300' N. of Florence Ave.
E.M. #17-P-50
Elev. 115.54
L.S. 101' N.W. cor. B.P.L. tower #11
300' N. of Florence Ave.

BM 107-P-50
Elev. 115.54
P.M. 101' N.W. cor. B.P.L. tower #11
300' N. of Florence Ave.
E.M. #17-P-50
Elev. 115.54
L.S. 101' N.W. cor. B.P.L. tower #11
300' N. of Florence Ave.

Notes:
SANITARY SEWERS to be constructed according to L.A. County, Standard No. 50-100. Details of construction, materials, etc. are not required in this County until the L.A. County Sanitary Sewer Ordinance, 1954, is adopted. All is to be laid horizontal.



22322



Design Dept.	Jan	1955
Designed	J.V.	5/4
Traced	J.V.	5/4
Checked	J.V.	5/4
Supervised By	J.V.	5/4
Right of Way		

P.C. 29+16
J.V. 0377.51
LEG. NO.
Sewer in Another View
Existing Sewer
Proposed Sewer

SANITARY SEWERS

PC 2946

4 SHEETS

15-0

FED. PROJ. NO.	STATE	FEDERAL PROJECT NO.	SHEET NO.	TOTAL SHEETS
	CALIF.		74	

AM. FURN. CO. INC. ENGINEERS
 CIVIL ENGINEERS
 1111 B. Postmans
 Wm. J. Fox, Inc. ENGINEERS
 APPROVED: *W. J. Fox* 1-18-55

CITY	COUNTY	ROUTE	SECTION	SHEET
VII	LA	167	B	74

22,223

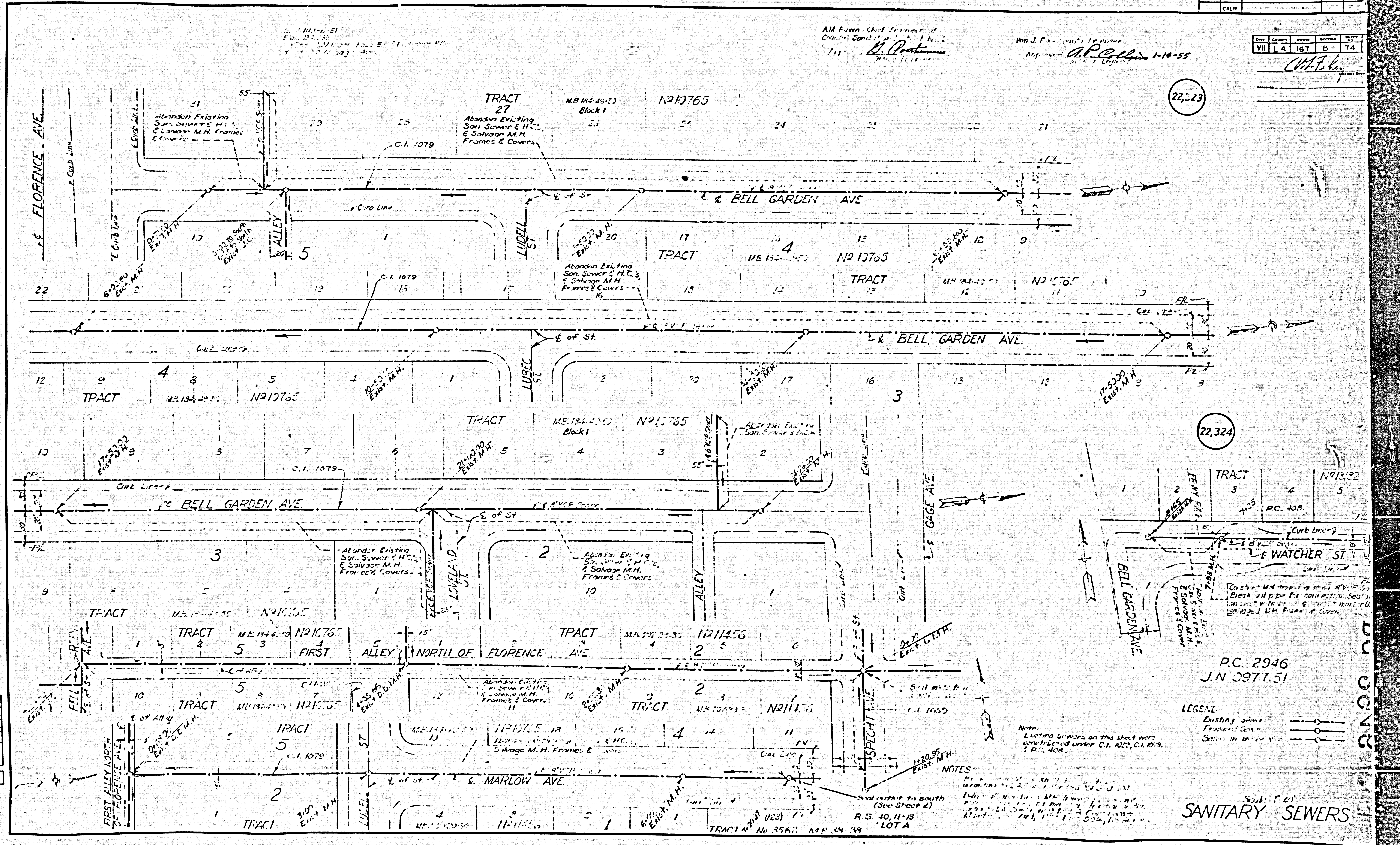
22,324

P.C. 2946
 J.N. 2977.51

LEGEND
 Existing Sewer
 Proposed Sewer
 Sewer in trench

NOTES
 Existing sewers on this sheet were constructed under C.I. 1053, C.I. 1079, & P.C. 408.

Scale: 1" = 20'
 SANITARY SEWERS



Design Dept.	Designed	Traced	Checked	Supervised By

Right of Way