

B.M. 37-138-56 - ELEV. 45.647
 L & N IN WEST CURB WOODRUFF
 #1 S. CURB RET. @ SW COR CARSON

BELLFLOWER BLDG. DIST NO. 4

NOTE:
 NO REPRESENTATIVE OF THE COUNTY ENGINEER WILL SURVEY OR LAY OUT ANY PORTION OF THE WORK.
 THE OWNER OR HIS AUTHORIZED REPRESENTATIVE SHALL FURNISH THE COUNTY ENGINEER WITH GRADE SHEETS AND STATIONS FOR ALL HOUSE LATERALS AND Y BRANCHES AND SHALL PROVIDE STAKES FOR THEM AT THEIR PROPER LOCATIONS WITH STATIONING PLAINLY MARKED. ANY CHANGE IN LOCATION SHALL BE REQUESTED IN WRITING BY THE OWNER OR HIS REPRESENTATIVE.
 NO REVISIONS SHALL BE MADE IN THESE PLANS WITHOUT THE APPR OF THE CO. ENGR.

1. USE STANDARD MANHOLE FRAMES AND COVERS S-4-117
2. USE STANDARD STRENGTH PIPE EXCEPT AS NOTED.
3. USE JOINT COMPOUND "A" OR "B" FOR ALL VITRIFIED CLAY PIPE JOINTS PER SPEC'S. SEC. 31.
4. RESURFACE ALL TRENCH WITHIN PAVED AREA TO MEET L.A. COUNTY ROAD DEPT. REQUIREMENTS.
5. ENGAGE FOUR FEET OF SEWER AT POINTS OF INTERFERENCE WITH POLES. S-4-119
6. HOUSE LATERALS TO BE CONSTRUCTED WITH INVERTS AT PROPERTY LINE. 6 FEET BELOW CURB GRADE.
7. ALL STRUCTURES SHALL BE BRICK SEWER STRUCTURES S-4-10A.
8. PROVIDE STAKES ON THE PROPERTY LINES OR PROPERTY LINES PRODUCED AT RIGHT ANGLES TO THE SEWER LINE AT THE CENTER LINE OF EACH MANHOLE
9. FOR ALLOWABLE LEAKAGE TEST, USE FORMULA NO. 2, SPEC'S. SEC. 31

PROFILE, ALIGNMENT, AND GRADE OF
SANITARY SEWERS
 TO BE CONSTRUCTED IN

TRACT NO. 15161

PC 2956
 J.N. 0978.61
 PAGE 1

(19,298)

PRIVATE CONTRACT NO. 2956
 W.S. 31
 ONE SHEET

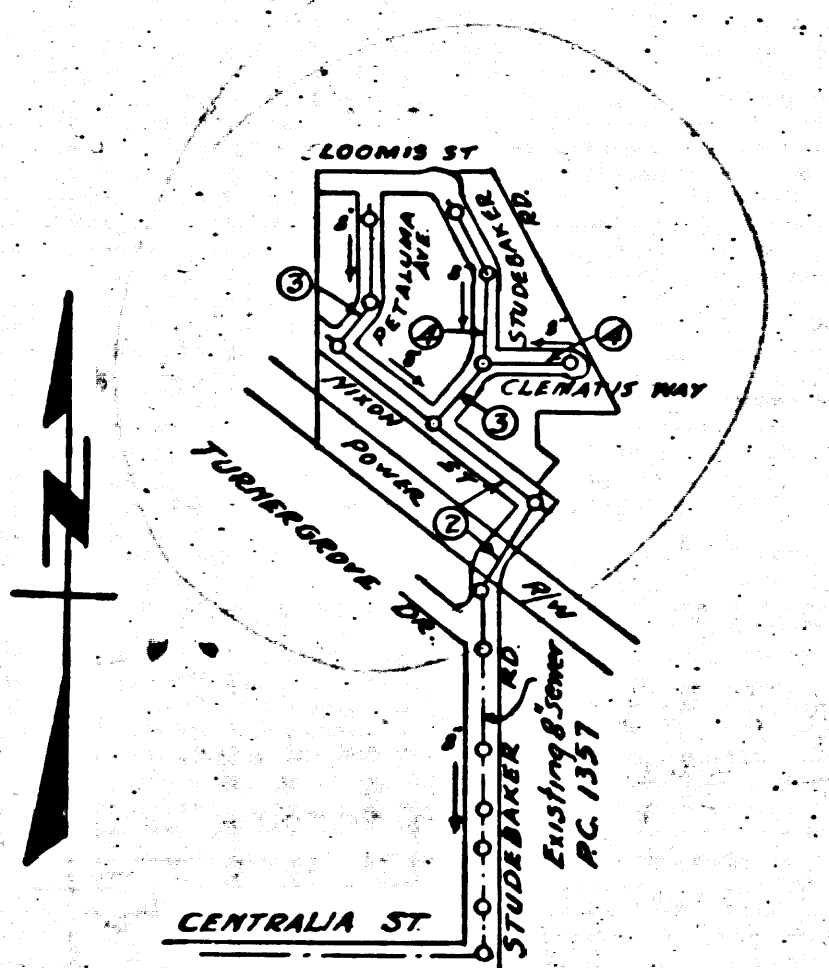
SCALE - VERT. 1" = 4'
 HORIZ. 1" = 40'

PREPARED
 BY *Arthur H. Adams*
 Reg. C.E. No. 33

NOTE:
 GRADES TO WHICH THIS IMPROVEMENT IS TO BE CONSTRUCTED ARE SHOWN ON PLANS AND PROFILES. GRADE POINTS FOR TOP OF CURBS, CENTER LINE OF STREETS OR CENTER LINE OF ALLEY ARE SHOWN BY CIRCLES ON PROFILES. AT ALL POINTS BETWEEN DESIGNATED POINTS THE GRADE SHALL BE ESTABLISHED SO AS TO CONFORM TO A STRAIGHT LINE DRAWN BETWEEN SAID DESIGNATED POINTS. ELEVATIONS ARE IN FEET ABOVE U.S.C.S. DATUM OR MEAN SEA LEVEL.
 THIS DRAWING AND THE DATA HEREON ARE HEREBY MADE A PART OF THE SPECIFICATIONS. WORK SHALL BE CONSTRUCTED ACCORDING TO SPECIFICATIONS ON FILE IN THE OFFICE OF THE COUNTY ENGINEER AND SHALL BE PROSECUTED ONLY IN THE PRESENCE OF THE COUNTY ENGINEER BEFORE WORK CAN BE STARTED. THE CONTRACTOR MUST OBTAIN A PERMIT TO EXCAVATE IN COUNTY STREETS FROM THE L.A. COUNTY ROAD DEPT., 108 W. 2ND ST. AND MAKE A DEPOSIT WITH THE COUNTY ENGINEER, 733 L.A. COUNTY ENGINEERING BUILDING, SUFFICIENT TO COVER THE COST OF CONSTRUCTION INSPECTION AND FIELD PLANS.
 APPROVAL OF THIS PLAN BY THE COUNTY OF LOS ANGELES DOES NOT CONSTITUTE A REPRESENTATION AS TO THE ACCURACY OF THE LOCATION OR OF THE EXISTENCE OR NON-EXISTENCE OF ANY UNDERGROUND UTILITY PIPE OR STRUCTURE WITHIN THE LIMITS OF THIS PROJECT. THIS NOTE APPLIES TO ALL SHEETS.

COUNTY OF LOS ANGELES, CALIFORNIA

APPROVED, WILLIAM J. FOX COUNTY ENGR. APPROVED, AMRAVN
 CHIEF ENGR. CO. SAN. DIST. NO. 3
 BY *A.P. Adams* SANITATION ENGINEER BY *George Costantino* OFFICE ENGINEER
 CHECKED BY: *R.L. Adams* 4-21-54
 OFFICE OF COUNTY ENGINEER REG. C.E. NO. 7860



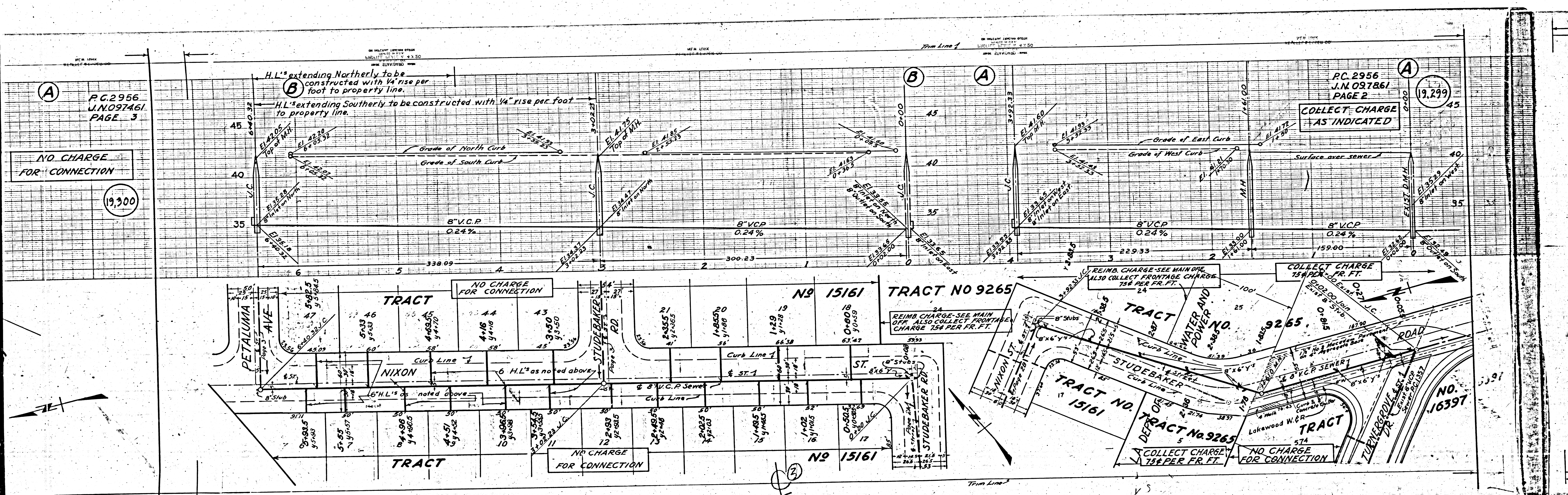
INDEX MAP
 SCALE 1" = 600'
 TRACT 15161
 P.C. 2956 J.N. 0978.61

SHEET NO.	PAGES
1	1-4

COLLECT CHARGES
 AS INDICATED
Adams 4-28-54

Checked 11-18-54 *W. Adams*

TRACT NO. 15161 PC 2956



P.C. 2956
J.N. 097461
PAGE 3

NO CHARGE
FOR CONNECTION

19,300

H.L. extending Northerly to be constructed with 1/4" rise per foot to property line.
H.L. extending Southerly to be constructed with 1/4" rise per foot to property line.

P.C. 2956
J.N. 097861
PAGE 2
COLLECT CHARGE AS INDICATED

19,299

NO CHARGE FOR CONNECTION

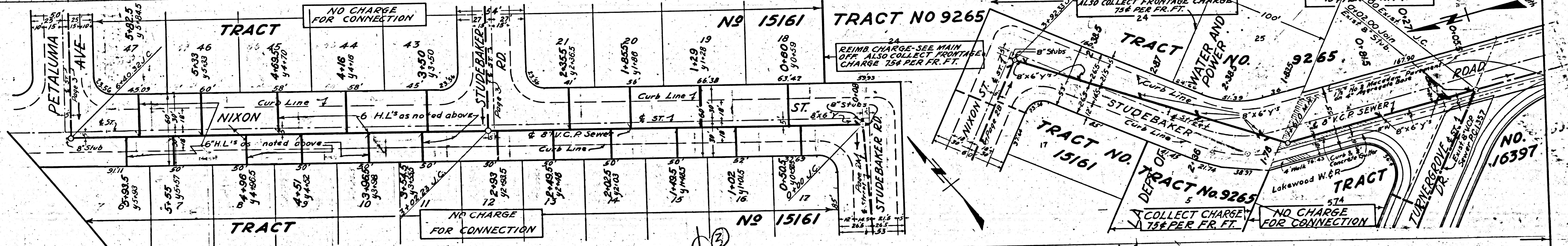
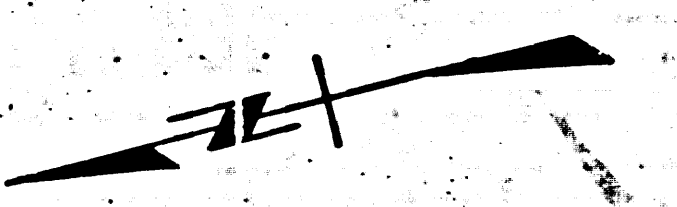
REIMB. CHARGE - SEE MAIN OFF. ALSO COLLECT FRONTAGE CHARGE 75¢ PER FR. FT.

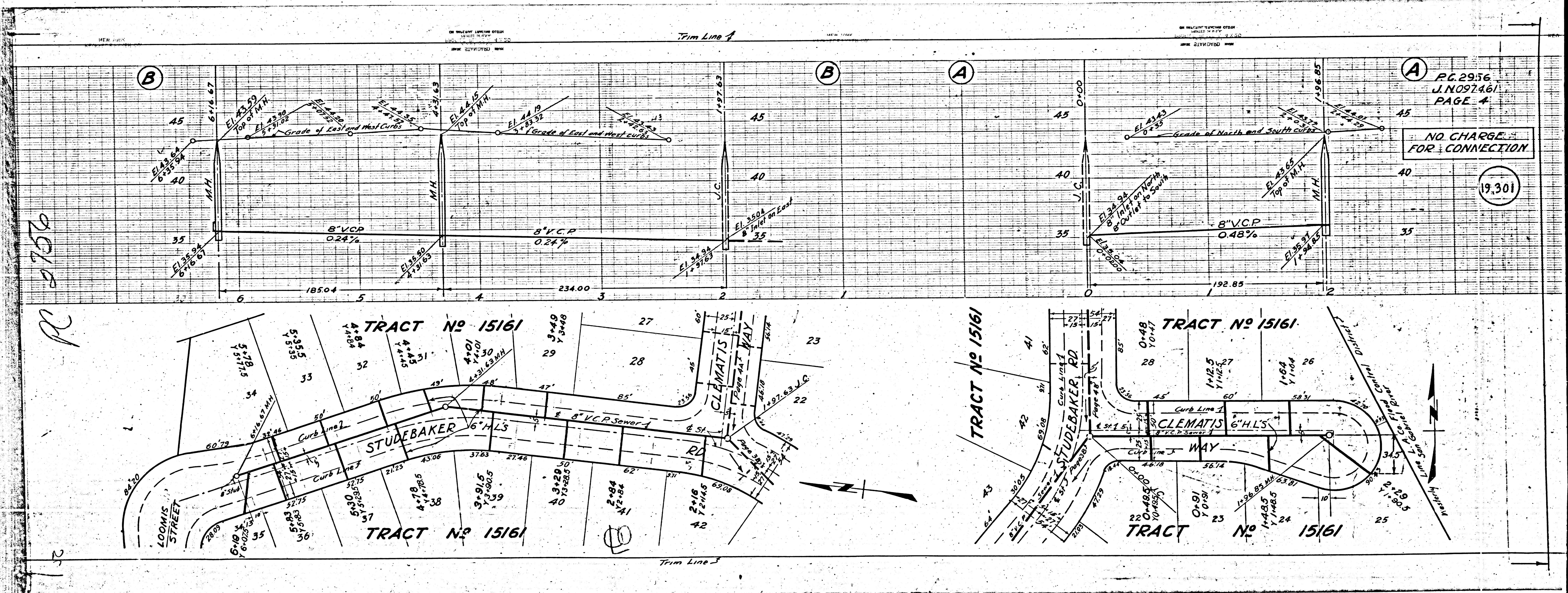
COLLECT CHARGE 75¢ PER FR. FT.

REIMB. CHARGE - SEE MAIN OFF. ALSO COLLECT FRONTAGE CHARGE 75¢ PER FR. FT.

COLLECT CHARGE 75¢ PER FR. FT.

NO CHARGE FOR CONNECTION





P.C. 29.76
J.N. 097461
PAGE 4

NO CHARGE FOR CONNECTION

19.301

2756

PC

27