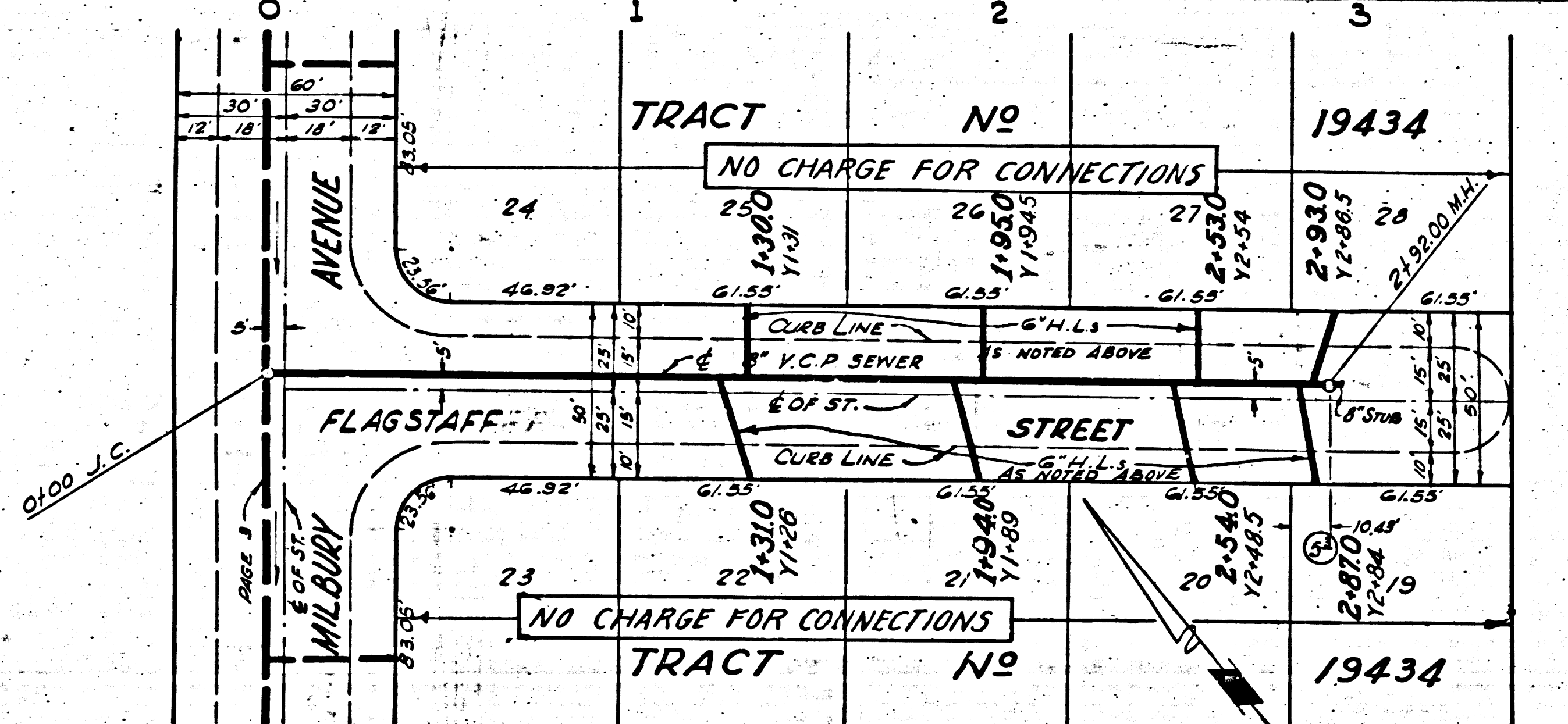
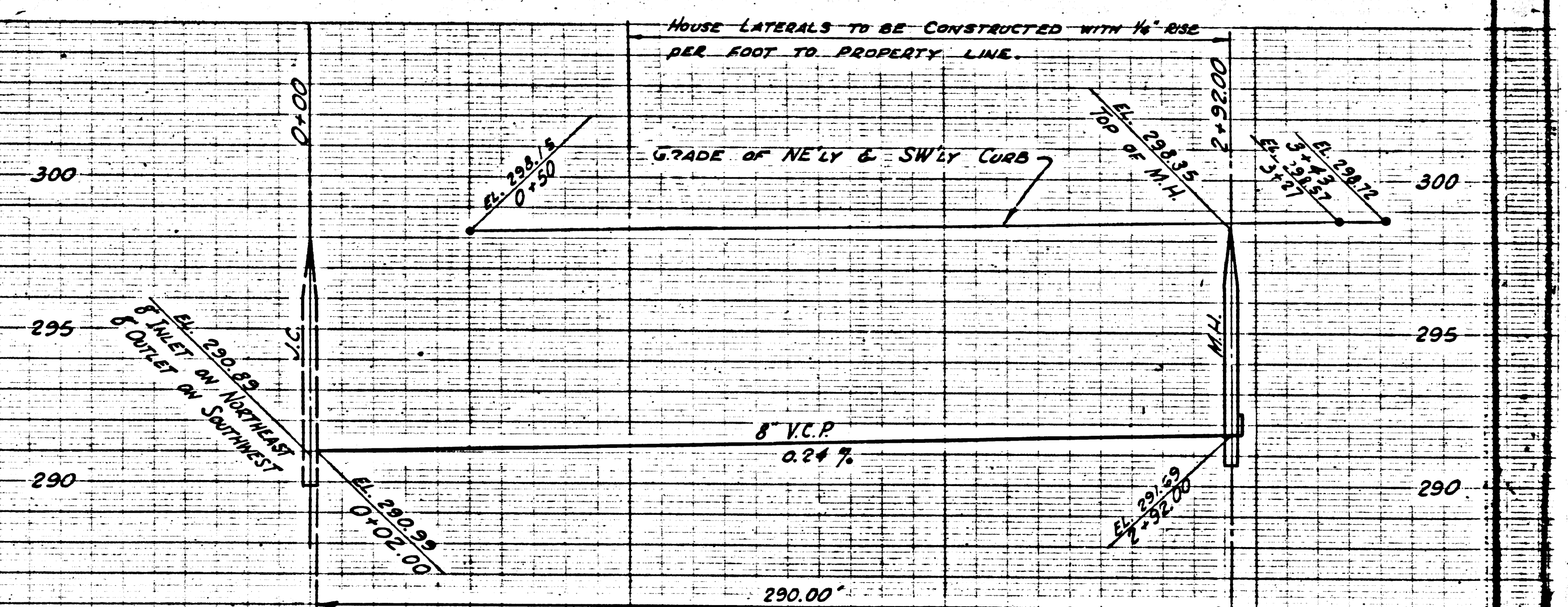


PC. 2960
J.N. 0979.11
PAGE 2

19374

COLLECT CHARGES AS INDICATED



PUEENTE BLDG. DIST. NO 2

- NOTE:
Provide stakes on the property lines or property lines produced at right angles to the sewer line at the center line of each manhole.
No representative of the County Engineer will survey or layout any portion of the work. The owner or his authorized representative shall furnish the County Engineer with grade sheets and stations for all house laterals and Y branches and shall provide stakes for them at their proper locations with stationing plainly marked. Any change in location shall be requested in writing by the owner or his representative.
No revisions shall be made in these plans without the approval of the County Engineer.
1. Use standard manhole frames and covers, S-a-117.
 2. Use standard strength pipe except as noted.
 3. Use cement mortar for all vitrified clay pipe joints.
 4. Resurface all trench within paved area to meet L.A. County Road Dept. or Calif. State Highway Dept. requirements in accordance with permit.
 5. Encase four feet of sewer at points of interference with poles, S-a-119.
 6. House laterals to be constructed with inverts at property line...feet below curb grade except as noted.
 7. Manhole tops in unimproved Rights-Of-Way to be 6" above finish grade.
 8. For allowable leakage test, use Formula No. 1, Spec's., Sec. 51.
 9. All structures shall be brick sewer structures, S-a-104, or standard precast concrete manholes, per S-a-135.

BENCH MARK - S.G. 1079
L. & D. on Northeast side of Stand pipe, 25' South and 55' West of the intersection of Puente Avenue and Nelson Avenue.
ELEV. - 297.155

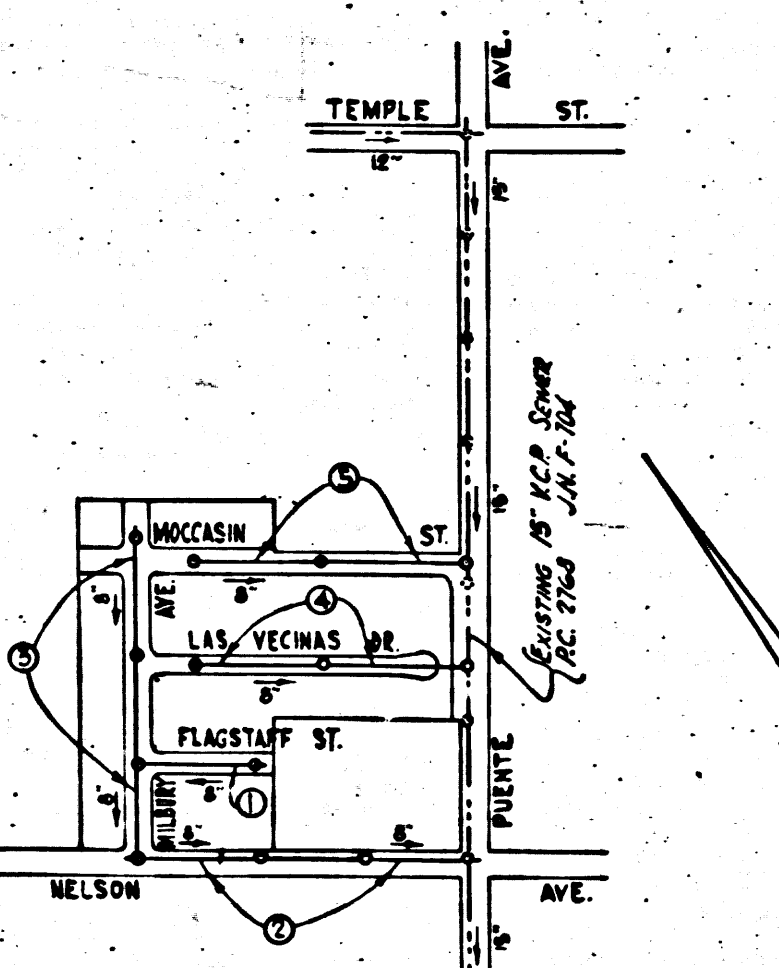
PROFILE, ALIGNMENT AND GRADE OF
SANITARY SEWERS
TO BE CONSTRUCTED IN
TRACT NO 19434
AND
NELSON AVE.
PRIVATE CONTRACT NO. 2960
W.S. 46
SHEET 1 OF 1 SHEET
Scale: VERT. 1"=4'
HORIZ. 1"=40'
MARCH 1954
PREPARED IN THE OFFICES OF
EDWARD N. FRISIUS
C.E. No. 5359
FOR LEGEND SEE PLAN NO. S-a-64

PC. 2960
J.N. 1100.01
PAGE 1

19373

SHEET	PAGES
1	1-5

COLLECT CHARGES AS INDICATED



INDEX MAP
Scale: 1"=600'
PC. 2960 J.N. 0979.11

NOTE:
Grades to which this improvement is to be constructed are shown on plans and profiles. Grade points for top of curbs, center line of streets, or center line of alleys are shown by circles on profiles. At all points between designated points the grade shall be established so as to conform to a straight line drawn between said designated points.
Elevations are in feet above U.S.C.S. datum or mean sea level.
This drawing and the data hereon are hereby made a part of the specifications. Work shall be constructed according to specifications on file in the office of the County Engineer and shall be prosecuted only in the presence of the County Engineer.
Before work can be started, the contractor must obtain a permit to excavate in County streets from the L.A. County Road Dept., 108 W. 2nd St. and make a deposit with the County Engineer, 733 L.A. County Engineering Building, sufficient to cover the cost of construction inspection and record plans.
Approval of this plan by the County of Los Angeles does not constitute a representation as to the accuracy of the location of or the existence or non-existence of any underground utility, pipe, or structure within the limits of this project. This note applies to all sheets.
If work is to be done in a State Highway, a permit must be obtained from the State of California, Division of Highways, 120 South Spring Street.

COUNTY OF LOS ANGELES, CALIFORNIA
Approved, William J. Fox, County Engineer
Approved, A. M. Rawn
CHIEF ENGR. DIST. NO. 15
By *A.P. Collins* Station Engineer
By *A. Costanzo* Chief Engineer
Checked By: *Ed. ...*
Office of County Engineer, Reg. C. E. No. 12602

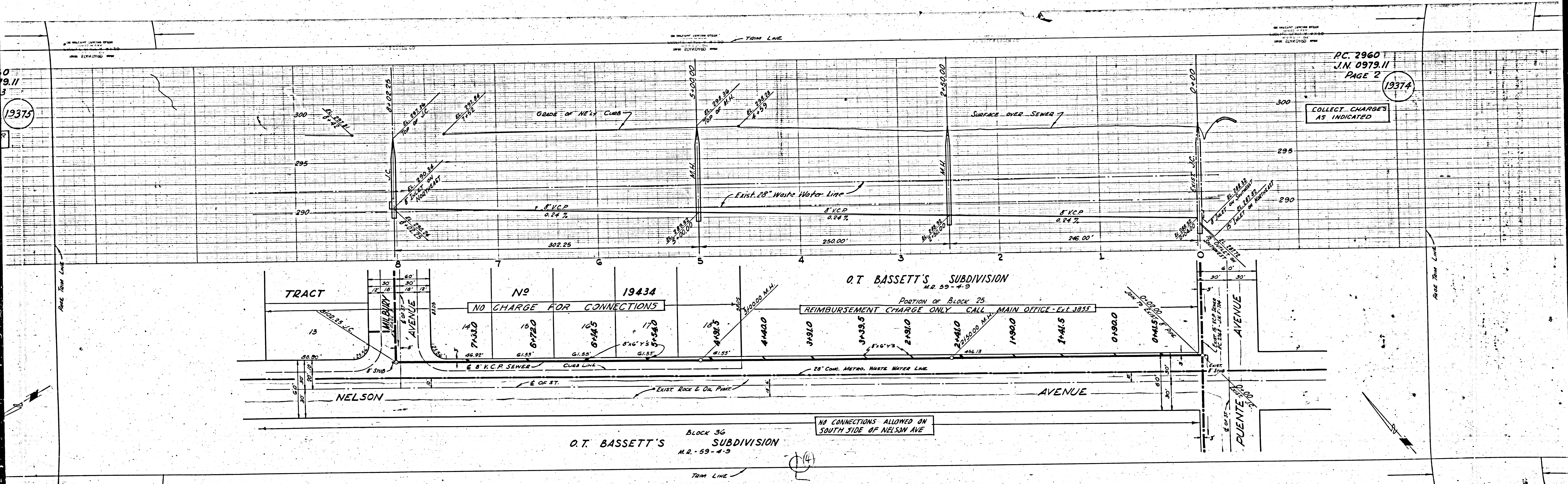
PC. 2960 J.N. 1100.01 PAGE 1
 TRACT NO 19434
 19373
 19374
 19375
 19376
 19377
 19378
 19379
 19380
 19381
 19382
 19383
 19384
 19385
 19386
 19387
 19388
 19389
 19390
 19391
 19392
 19393
 19394
 19395
 19396
 19397
 19398
 19399
 19400

19375

PC 2960
J.N. 0979.11
PAGE 2

19374

COLLECT CHARGES AS INDICATED



O.T. BASSETT'S
BLOCK 36
SUBDIVISION
M.R. 59-4-9

NO CONNECTIONS ALLOWED ON SOUTH SIDE OF NELSON AVE

14

PC 2960
J.N. 0979.11
PAGE 4

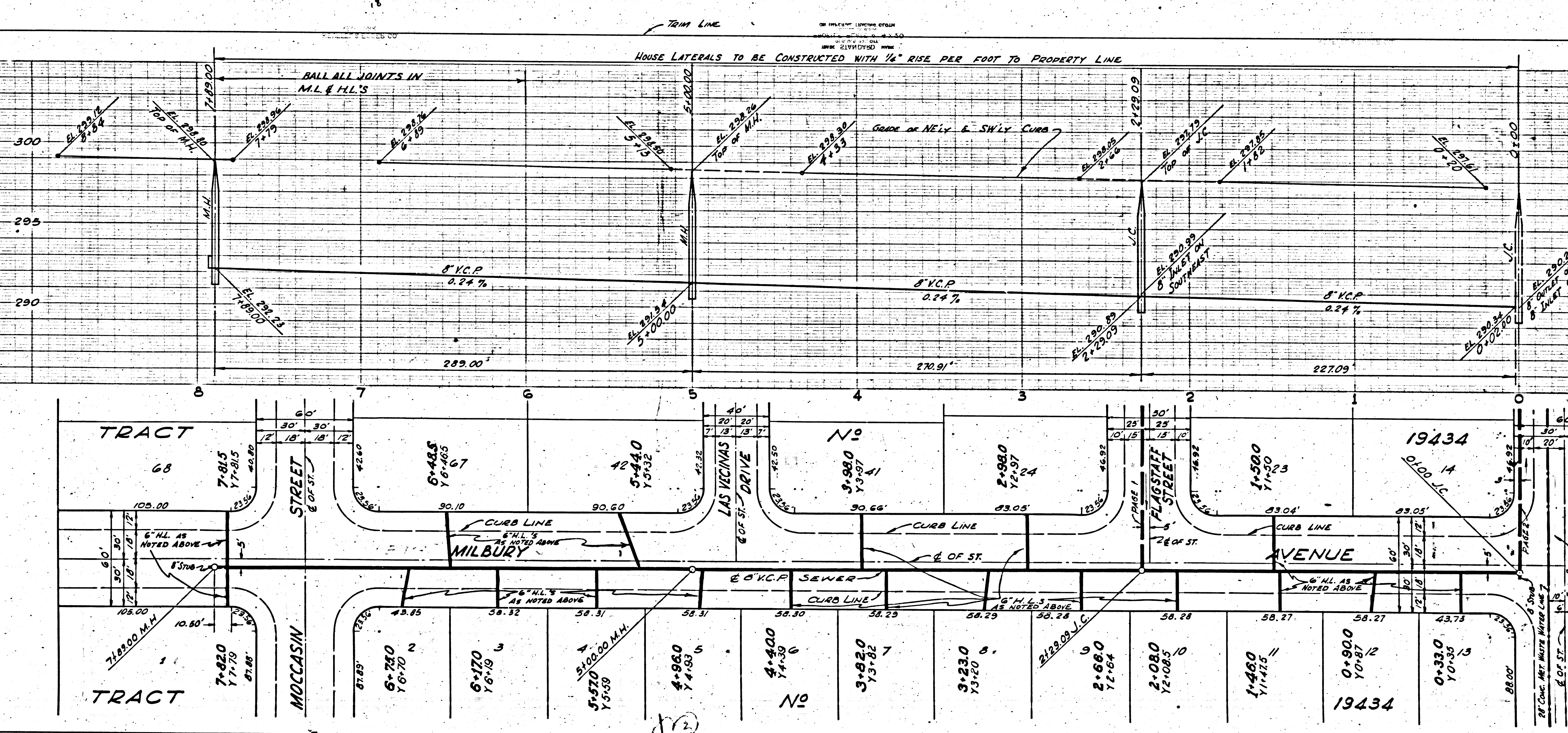
NO CHARGE FOR CONNECTIONS

19376

PC 2960
J.N. 0979.11
PAGE 3

19375

NO CHARGE FOR CONNECTIONS



P.C. 2960
J.N. 0979.11
PAGE 5

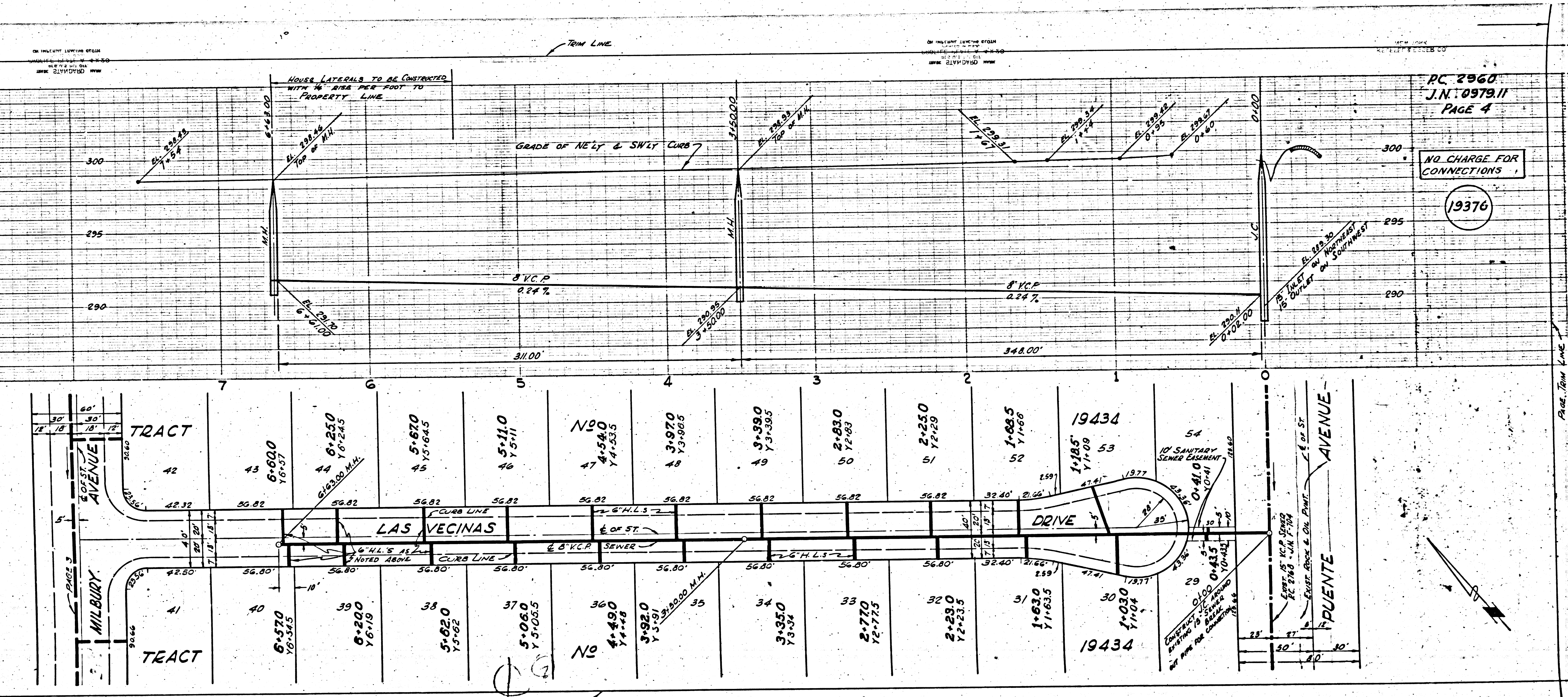
COLLECT CHARGES
AS INDICATED

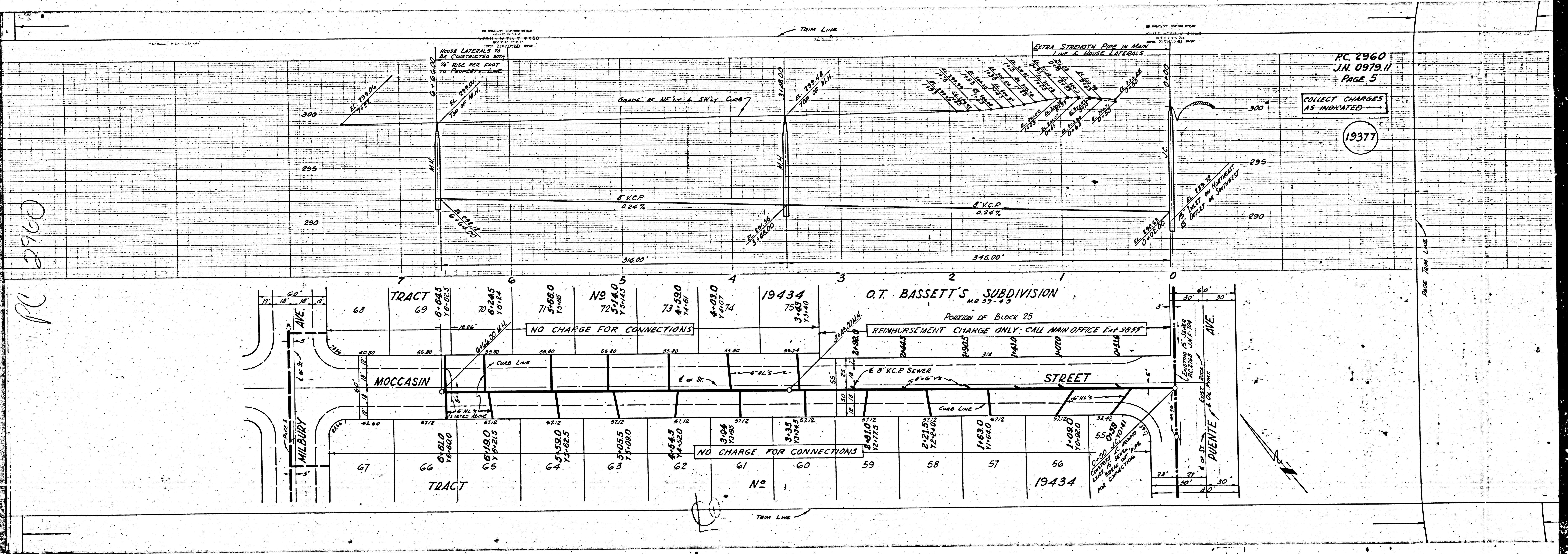
19377

P.C. 2960
J.N. 0979.11
PAGE 4

NO CHARGE FOR
CONNECTIONS

19376





PC 2760

PC 2960
J.N. 0979.11
PAGE 5

COLLECT CHARGES
AS INDICATED

19377

O.T. BASSETT'S SUBDIVISION
M.R. 23-73

PORTION OF BLOCK 25
REIMBURSEMENT CHARGE ONLY - CALL MAIN OFFICE E.P. 3857

NO CHARGE FOR CONNECTIONS

NO CHARGE FOR CONNECTIONS

19434

No

19434

PAGE TRIM LINE