

P.C. 2962
J.N. 0979.31
PAGE 2

NO CHARGE FOR CONNECTIONS

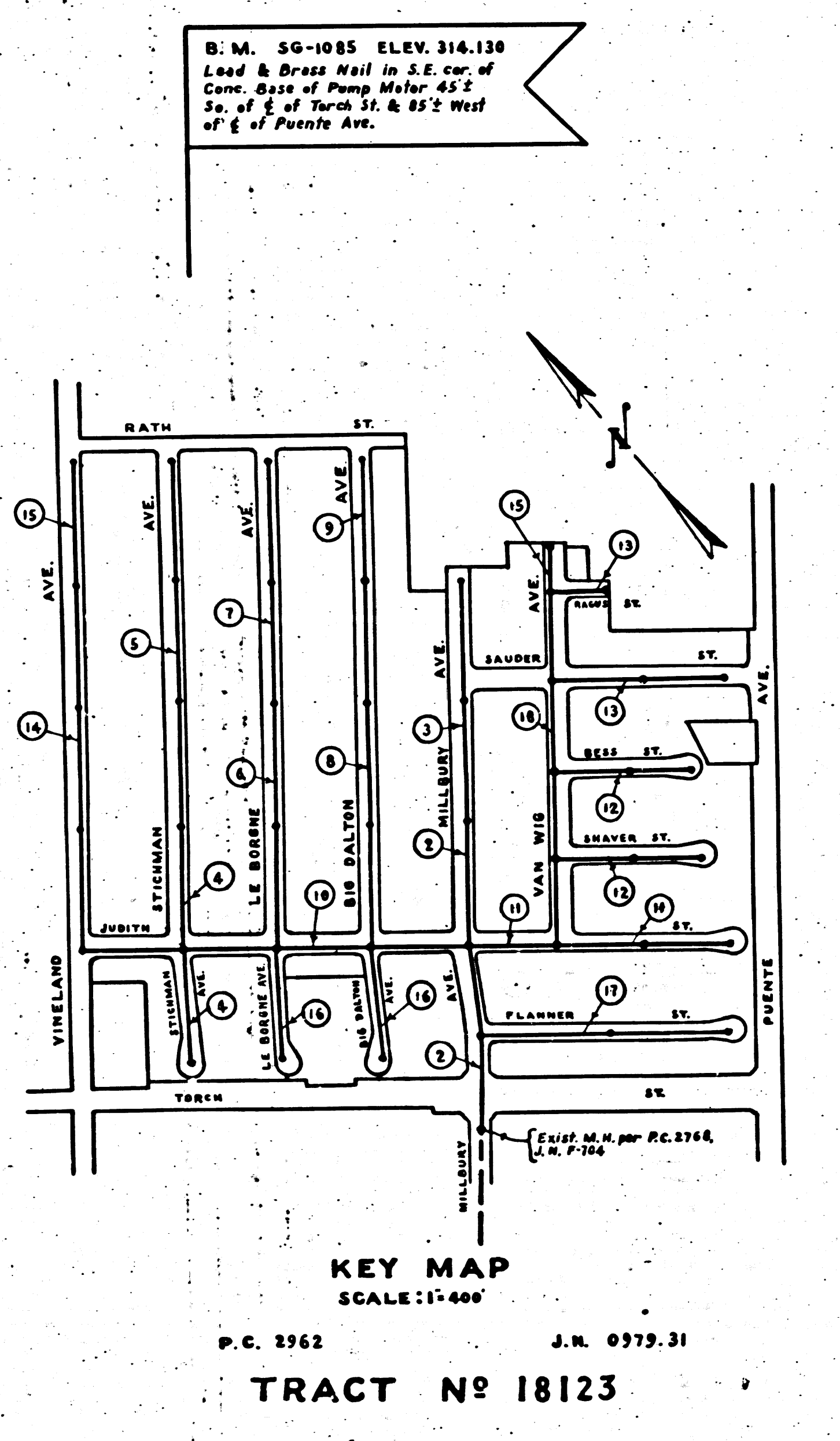
18,292

CT No 18121

8 + 00.00 Exist. M.H.
P.C. 2962, J.N. 0979.31
Page 12

EXIST. 12" MCP SEWER
P.C. 2962 OR 18121

CT No 18121



B.M. 50-1085 ELEV. 316.130
Lead & Brass Nail in S.E. cor. of
Cone. Base of Pump Meter 45.2
30' E of Turn St. & 85' S West
of E. of Puente Ave.

PUENTE BUILDING DISTRICT No 2.

NOTE:
PROVIDE STAKES ON THE PROPERTY LINES OR PROPERTY LINES PRODUCED AT RIGHT ANGLES TO THE SEWER LINE AT THE CENTER LINE OF EACH MANHOLE. NO REPRESENTATIVE OF THE COUNTY ENGINEER WILL SURVEY OR LAY OUT ANY PORTION OF THE WORK.

THE OWNER OR HIS AUTHORIZED REPRESENTATIVE SHALL FURNISH THE COUNTY ENGINEER WITH GRADE SHEETS AND STATIONS FOR ALL HOUSE LATERALS AND BRANCHES AND SHALL PROVIDE STAKES FOR THEM AT THEIR PROPER LOCATIONS WITH STATIONING PLAINLY MARKED. ANY CHANGE IN LOCATION SHALL BE REQUESTED IN WRITING BY THE OWNER OR HIS REPRESENTATIVE. NO REVISIONS SHALL BE MADE IN THESE PLANS WITHOUT APPROVAL OF THE COUNTY ENGINEER.

- 1- USE STANDARD MANHOLE FRAMES AND COVERS, S-8-117, EXCEPT AS NOTED.
- 2- USE STANDARD STRENGTH PIPE, EXCEPT AS NOTED.
- 3- USE CEMENT MORTAR FOR ALL VITRIFIED CLAY PIPE JOINTS.
- 4- RESURFACE ALL TRENCH WITHIN PAVED AREA TO MEET L.A. COUNTY ROAD DEPT. OR CALIF. STATE HWY. DEPT. REQUIREMENTS IN ACCORDANCE WITH PERMIT.
- 5- ENCASE FOUR FEET OF SEWER AT POINTS OF INTERFERENCE WITH POLES, S-8-119.
- 6- HOUSE LATERALS TO BE CONSTRUCTED WITH INVERTS AT PROPERTY LINE 6 FEET BELOW CURB GRADE, EXCEPT AS NOTED.
- 7- ALL STRUCTURES SHALL BE BRICK SEWER STRUCTURES, S-8-104, EXCEPT AS NOTED.
- 8- FOR ALLOWABLE LEAKAGE TEST, USE FORMULA No 1, SPECS. SEC. 51.

SHEET	PAGES
1	1-5
2	6-10
3	11-15
4	16-18

Revision Approved: *R. E. Kuhn* 5-6-54
Office of County Engineer, Reg. C.E. 7860
Road Grades lowered Pages 5, 7, 8 & 9
Sewer Grades lowered Pages 5 & 17

NO CHARGE FOR CONNECTIONS EXCEPT AS NOTED ON PAGES 11, 15 & 17

checked 6-15-54 *McKinn*

Trim Line
18

PROFILE, ALIGNMENT AND GRADE OF
SANITARY SEWERS
TO BE CONSTRUCTED IN

P.C. 2962
J.N. 0979.31
PAGE 1

TRACT No 18123

18,291

(18)

PRIVATE CONTRACT No 2962
W.S. 46
SHEET 1 OF 4 SHEETS

SCALES: VERT. 1"=4'
HORIZ. 1"=40'

DATE: FEB. 1954

PREPARED IN THE OFFICE OF
HAROLD M. TEGART
BY *Harold M. TEGART* R.E. No 2151
FOR LEGEND SEE PLAN No 5-8-54

NOTE:
GRADES TO WHICH THIS IMPROVEMENT IS TO BE CONSTRUCTED ARE SHOWN ON PLANS AND PROFILES. GRADE POINTS FOR TOP OF CURB, CENTER LINE OF STREET OR CENTER LINE OF ALLEY ARE SHOWN BY CIRCLES ON PROFILE. AT ALL POINTS BETWEEN DESIGNATED POINTS THE GRADE SHALL BE ESTABLISHED SO AS TO CONFORM TO A STRAIGHT LINE DRAWN BETWEEN SAID DESIGNATED POINTS. ELEVATIONS ARE IN FEET ABOVE U.S.C. DATUM OR MEAN SEA LEVEL. THIS DRAWING AND THE DATA HEREON ARE HEREBY MADE A PART OF THE SPECIFICATIONS. WORK SHALL BE CONSTRUCTED ACCORDING TO SPECIFICATIONS ON FILE IN THE OFFICE OF THE COUNTY ENGINEER AND SHALL BE PROSECUTED ONLY IN THE PRESENCE OF THE COUNTY ENGINEER.

BEFORE WORK CAN BE STARTED, THE CONTRACTOR MUST OBTAIN A PERMIT TO EXCAVATE IN COUNTY STREETS FROM THE L.A. COUNTY ROAD DEPT., 108 W. 2nd ST. AND MAKE A DEPOSIT WITH THE COUNTY ENGINEER, 713 L.A. CO. ENGR. BLDG., SUFFICIENT TO COVER THE COST OF CONSTRUCTION INSPECTION AND RECORD PLANS. APPROVAL OF THIS PLAN BY THE COUNTY OF LOS ANGELES DOES NOT CONSTITUTE A REPRESENTATION AS TO THE ACCURACY OF THE LOCATION OF, OR THE EXISTENCE OR NON-EXISTENCE OF, ANY UNDERGROUND UTILITY, PIPE, OR STRUCTURE WITHIN THE LIMITS OF THIS PROJECT. (THIS NOTE APPLIES TO ALL SHEETS)

WHERE WORK IS TO BE DONE IN A STATE HIGHWAY, A PERMIT MUST BE OBTAINED FROM THE STATE OF CALIFORNIA DIVISION OF HIGHWAYS, 120 SO. SPRING ST. BY THE CONTRACTOR AND POST HIS BOND AS REQUIRED.

COUNTY OF LOS ANGELES, CALIF.

APPROVED, WILLIAM J. FOX, COUNTY ENGINEER

APPROVED, A. M. RAWN
CHIEF ENGR. - CG. SAN. DIST. No 15

BY *A. M. Rawn* ENGINEER

CHECKED BY *Richard E. Kuhn* 3-26-54
OFFICE OF COUNTY ENGINEER, REG. C.E. No 7860

TRACT No 18123

P.C. 2962
J.N. 0979.31
PAGE 3

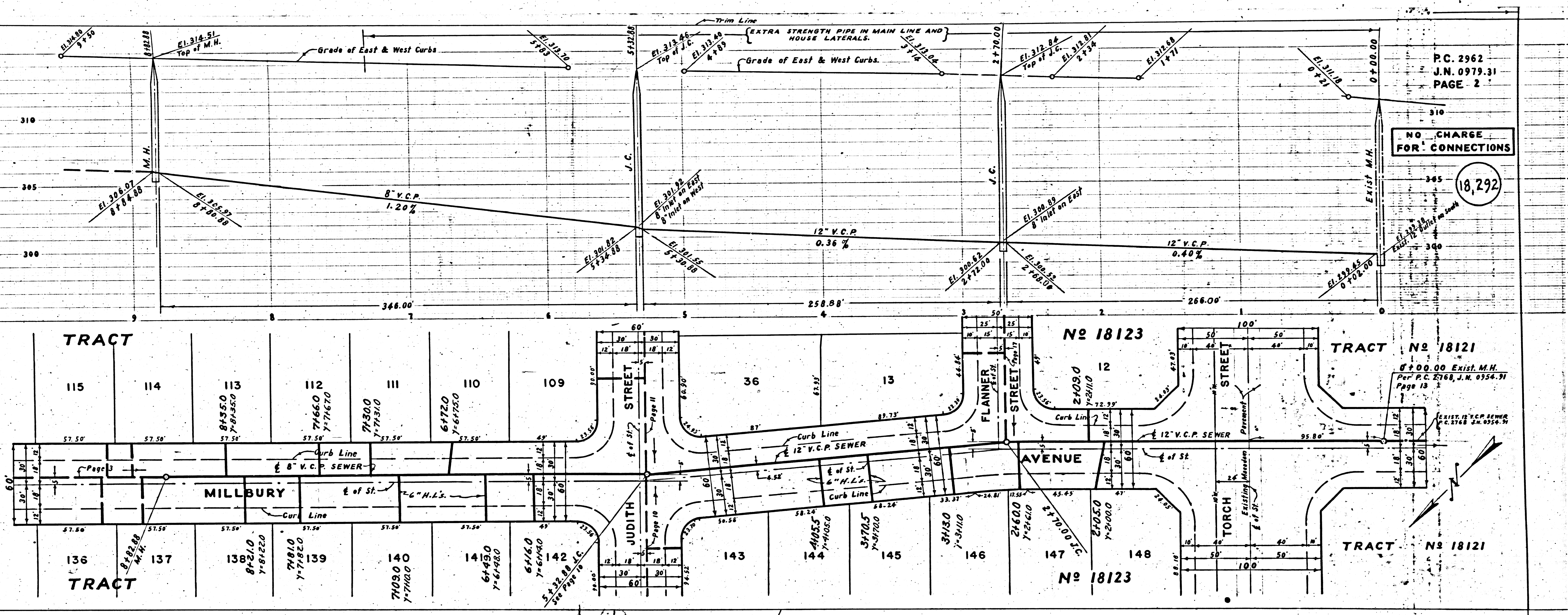
18,293

NO CHARGE
FOR CONNECTIONS

P.C. 2962
J.N. 0979.31
PAGE 2

NO CHARGE
FOR CONNECTIONS

18,292

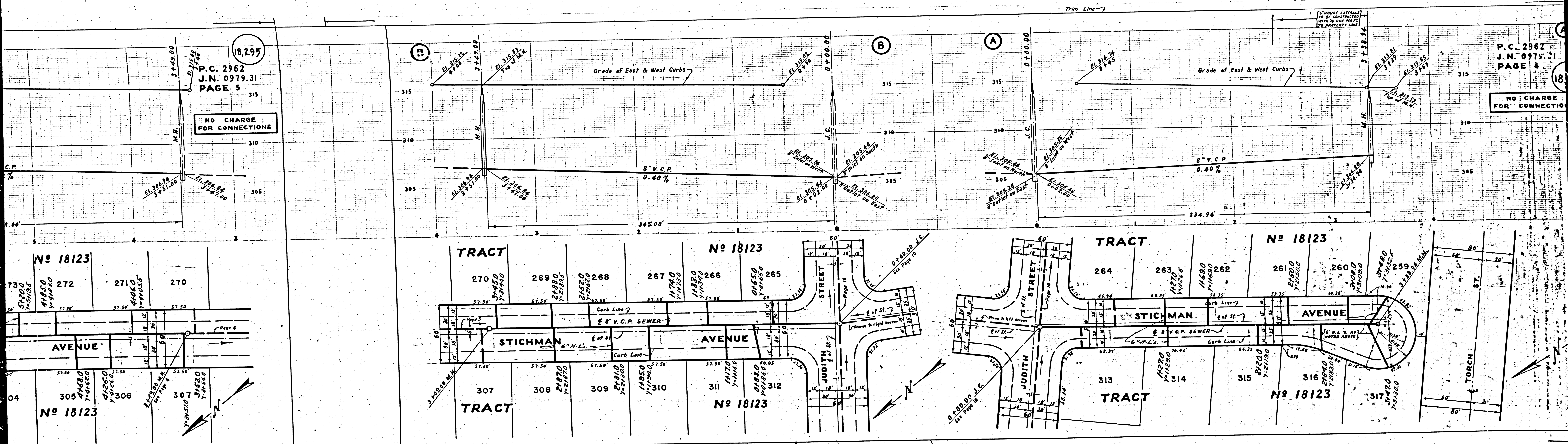


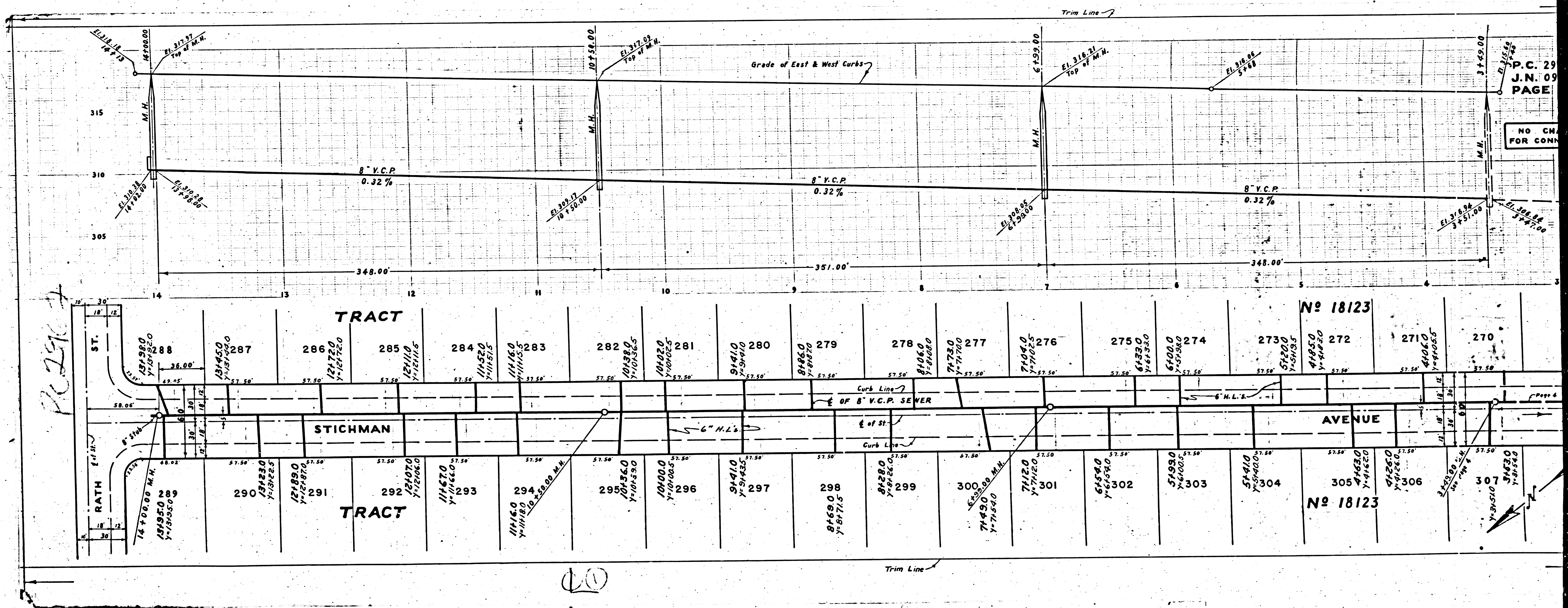
8,295
P.C. 2962
J.N. 0979.31
PAGE 5

NO CHARGE FOR CONNECTIONS

P.C. 2962
J.N. 0979.31
PAGE 4

NO CHARGE FOR CONNECTIONS





RETRACT

10

P.C. 29
J.N. 09
PAGE

NO CHG
FOR CONN

No 18123

No 18123

315

310

305

300

295

290

285

280

275

270

287

286

285

284

283

282

281

280

279

278

277

276

275

274

273

272

271

270

299

298

297

296

295

294

293

292

291

290

301

302

303

304

305

306

307

300

299

298

297

296

295

294

293

292

291

302

303

304

305

306

307

308

309

310

311

312

313

314

315

316

317

318

319

320

321

322

323

324

325

326

327

328

329

330

331

332

333

334

335

336

337

338

339

340

341

342

343

344

345

346

347

348

349

350

351

352

353

354

355

356

357

358

359

360

361

362

363

364

365

366

367

368

369

370

371

372

373

374

375

376

377

378

379

380

381

382

383

384

385

386

387

388

389

390

391

392

393

394

395

396

397

398

399

400

401

402

403

404

405

406

407

408

409

410

411

412

413

414

415

416

417

418

419

420

421

422

423

424

425

426

427

428

429

430

431

432

433

434

435

436

437

438

439

440

441

442

443

444

445

446

447

448

449

450

451

452

453

454

455

456

457

458

459

460

461

462

463

464

465

466

467

468

469

470

471

472

473

474

475

476

477

478

479

480

481

482

483

484

485

486

487

488

489

490

491

492

493

494

495

496

497

498

499

500

501

502

503

504

505

506

507

508

509

510

511

512

513

514

515

516

517

518

519

520

521

522

523

524

525

526

527

528

529

530

531

532

533

534

535

536

537

538

539

540

541

542

543

544

545

C. 2962
N. 0979.31
PAGE 7

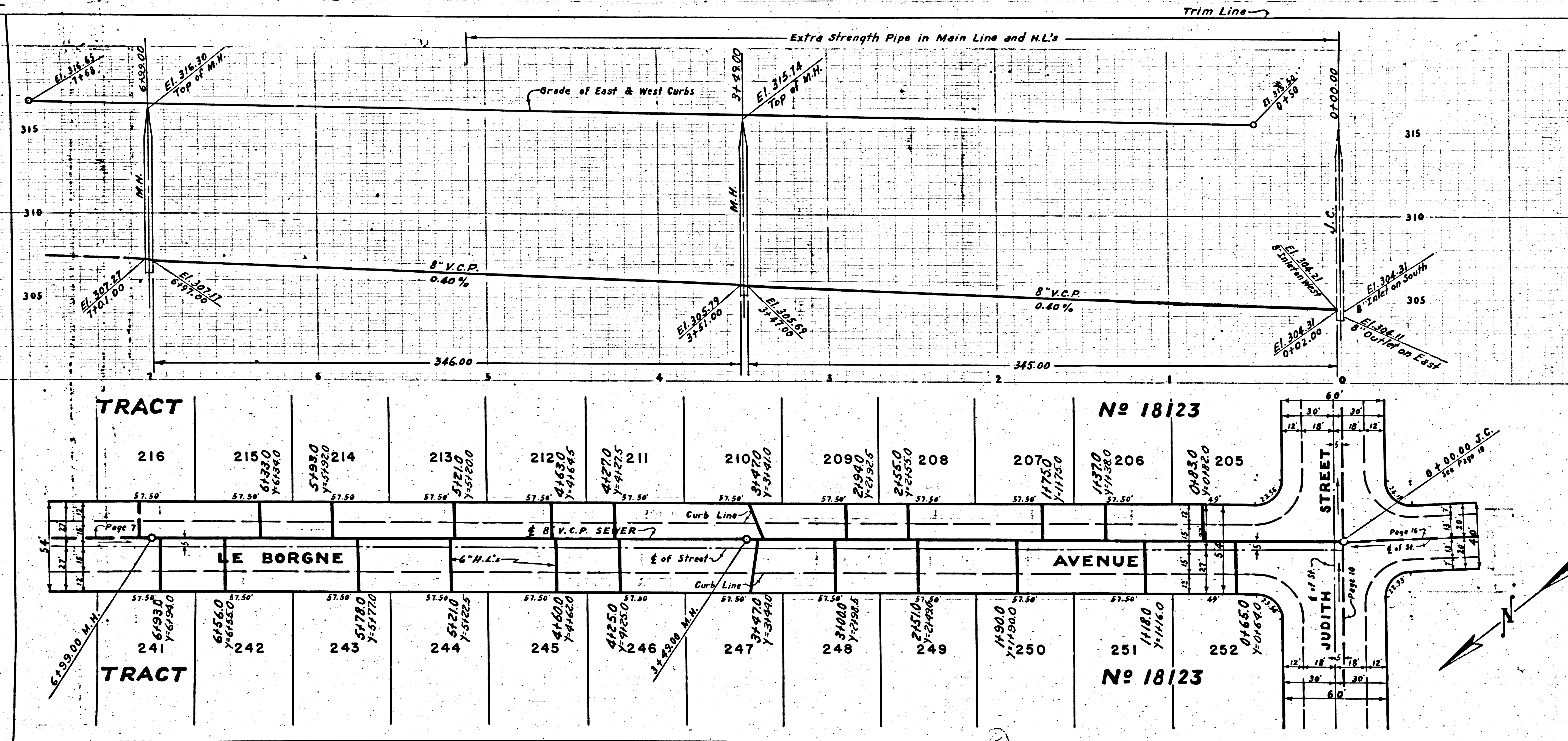
18,297

NO CHARGE
FOR CONNECTIONS

P. C. 2962
J. N. 0979.31
PAGE 6

18,296

NO CHARGE
FOR CONNECTIONS



TRACT

No 18123

LE BORGNE

AVENUE

TRACT

No 18123

Checked 6-15-54 M. Larson

R.S.

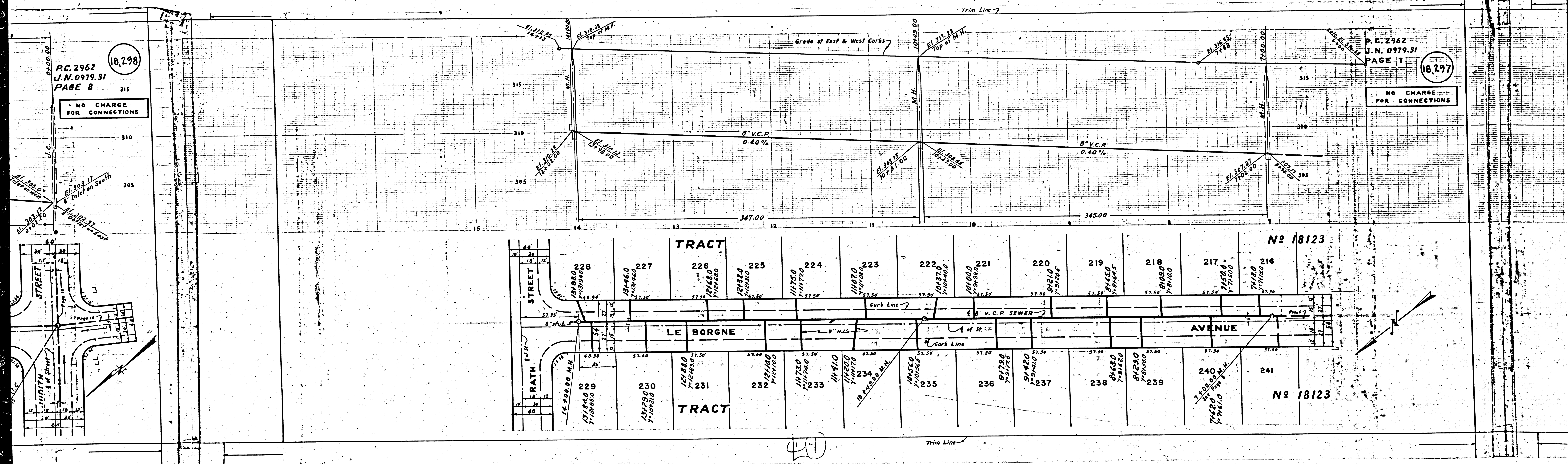
P. C. 2962 J. N. 0979.31 TRACT No 18123

26

P.C. 2962
J.N. 0979.31
PAGE 8

(18,298)

NO CHARGE
FOR CONNECTIONS



P.C. 2962
J.N. 0979.31
PAGE 7

(18,297)

NO CHARGE
FOR CONNECTIONS

TRACT

No 18123

LE BORGNE AVENUE

TRACT

No 18123

41

P.C. 2962
J.N. 0979.31
PAGE 9

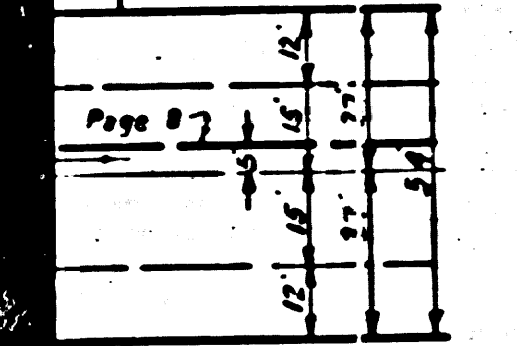
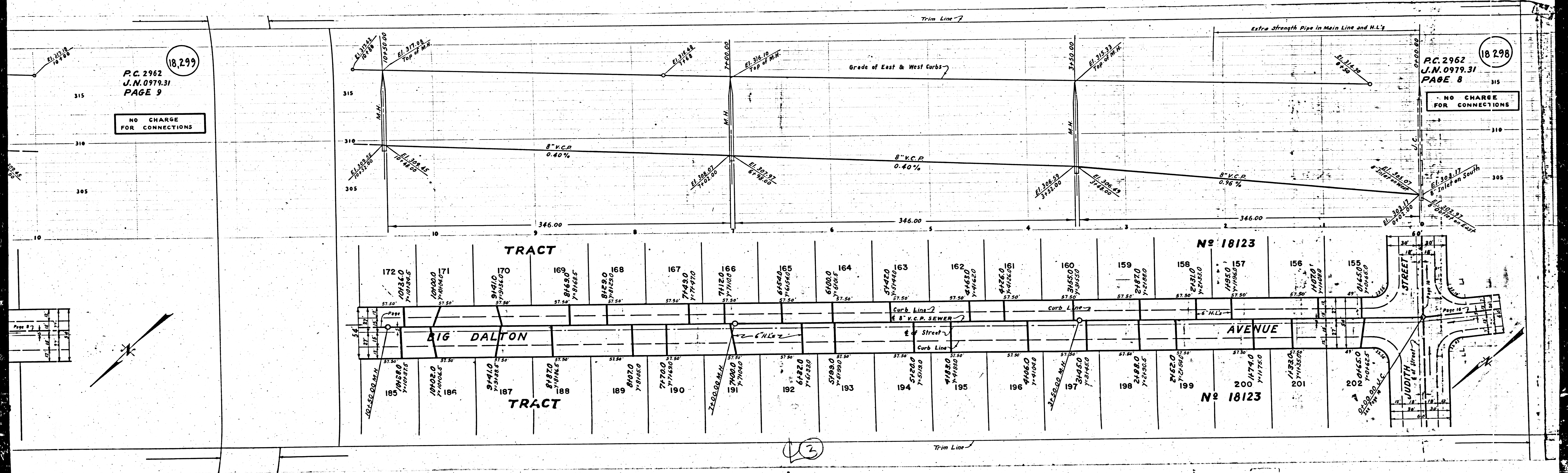
18,299

NO CHARGE
FOR CONNECTIONS

P.C. 2962
J.N. 0979.31
PAGE 8

18,298

NO CHARGE
FOR CONNECTIONS



3

P.C. 2962
J.N. 0979.31
PAGE 12

18,302

NO CHARGE
FOR CONNECTIONS
EXCEPT AS NOTED

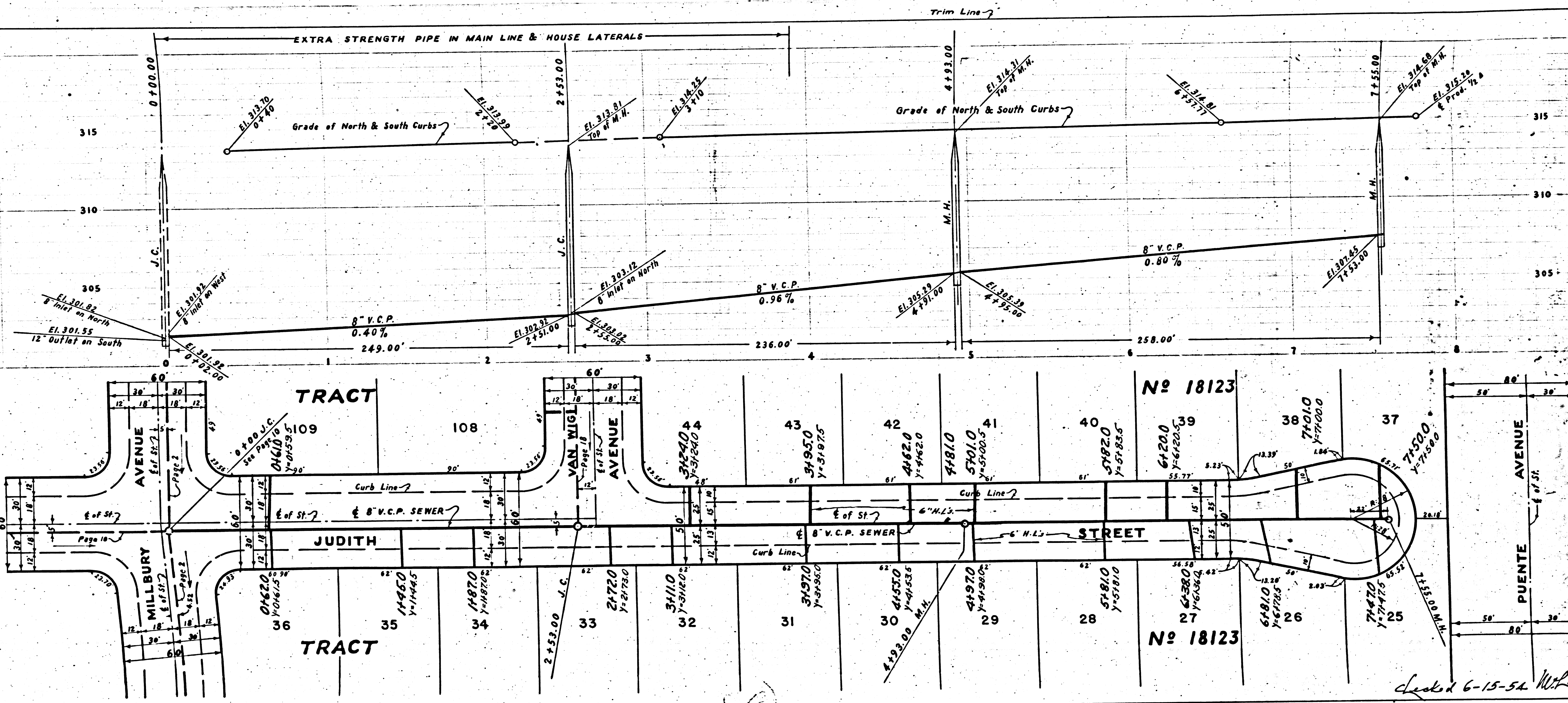
P.C. 2962
J.N. 0979.31
PAGE 11

18,301

NO CHARGE
FOR CONNECTIONS

52

50.00
5125.00
5+32.00 M.H.



Check 6-15-54 W. H. W. R. S.

11. W. 0233.31

708237

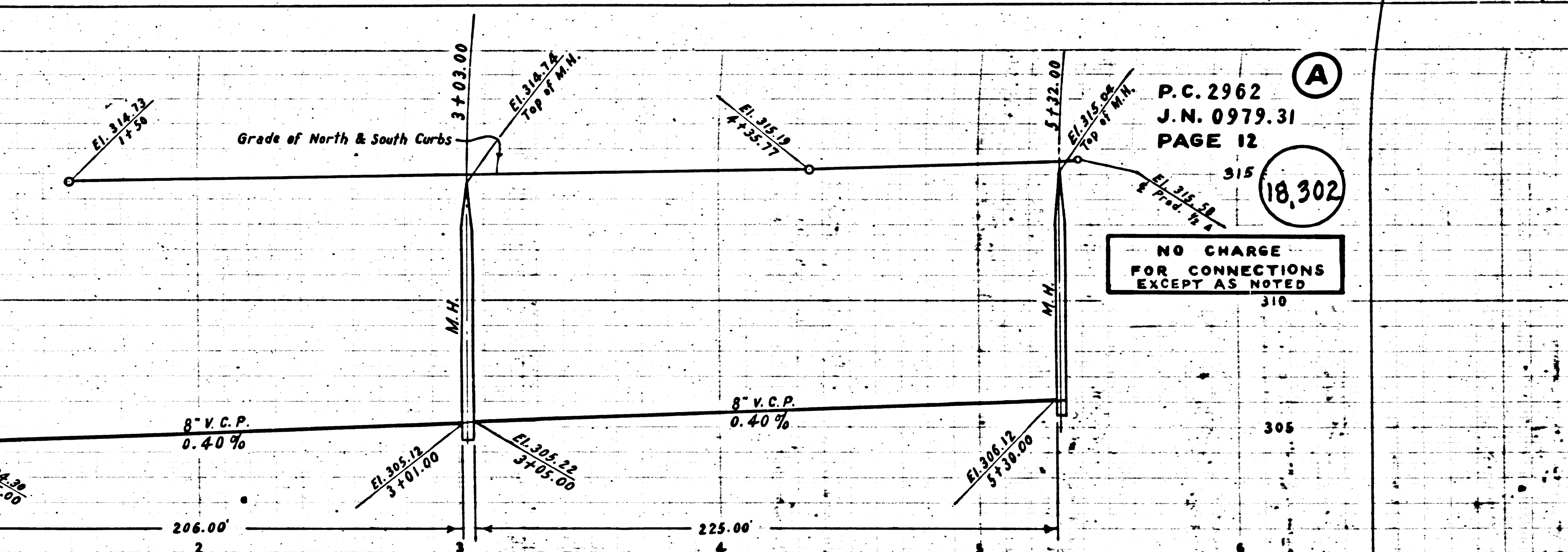
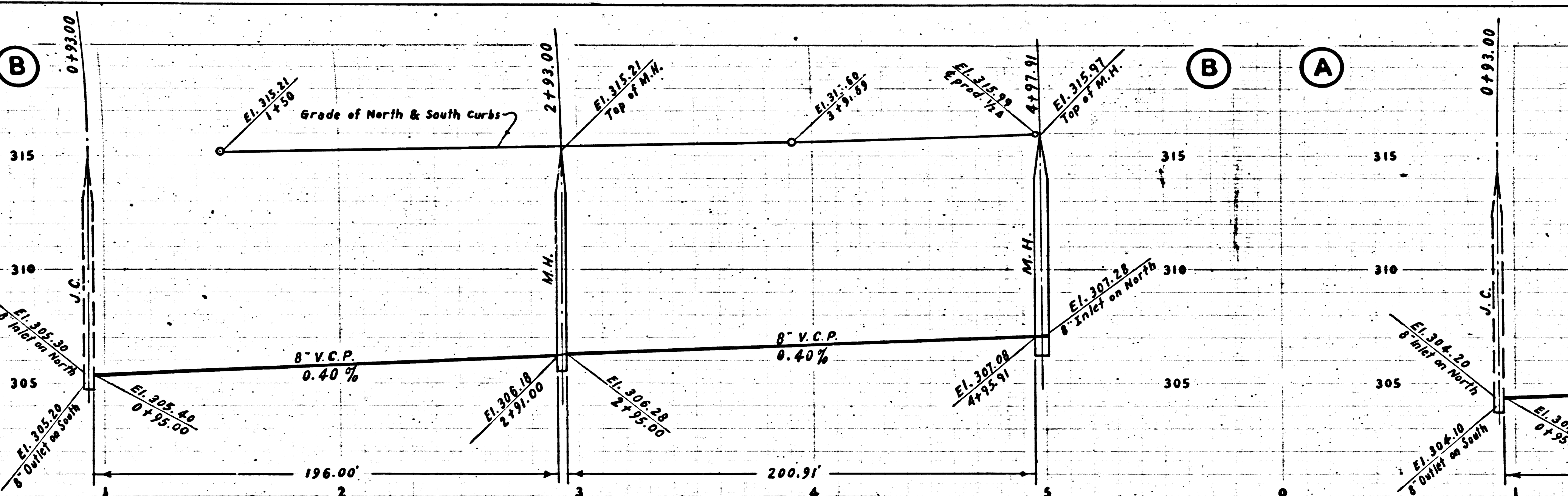
S. C. S. A. S.

TRAC 18153

P.C. 2962
J.N. 0979.31
PAGE 13

NO CHARGE
FOR CONNECTIONS

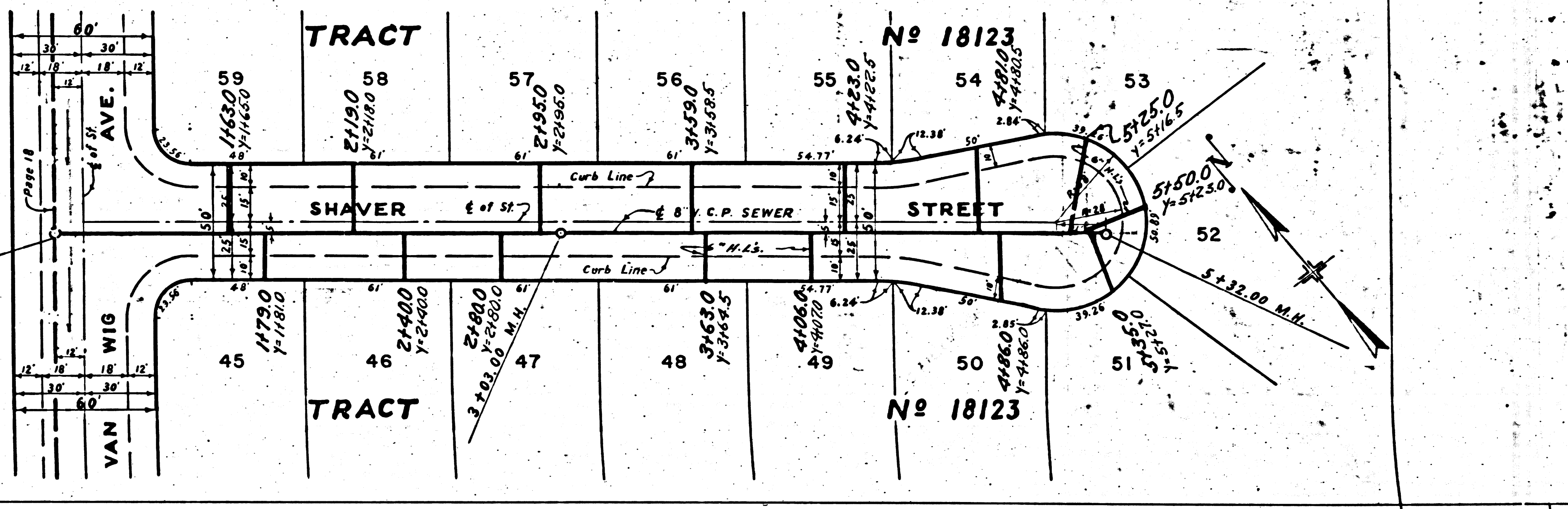
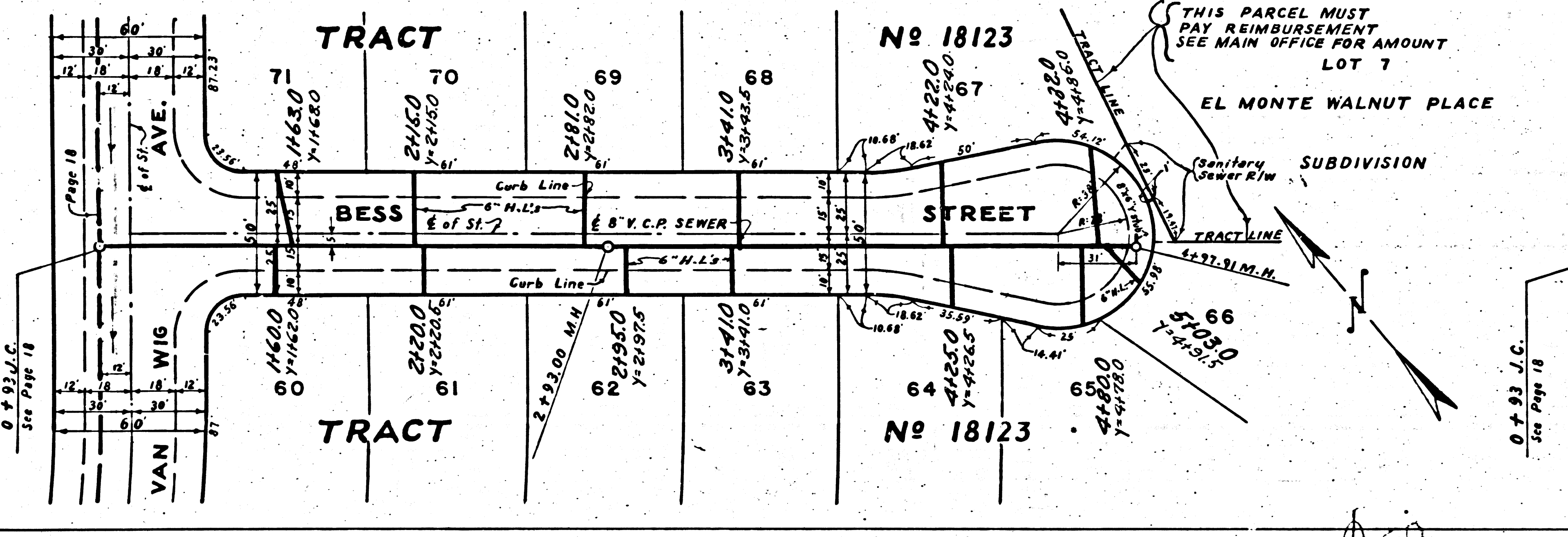
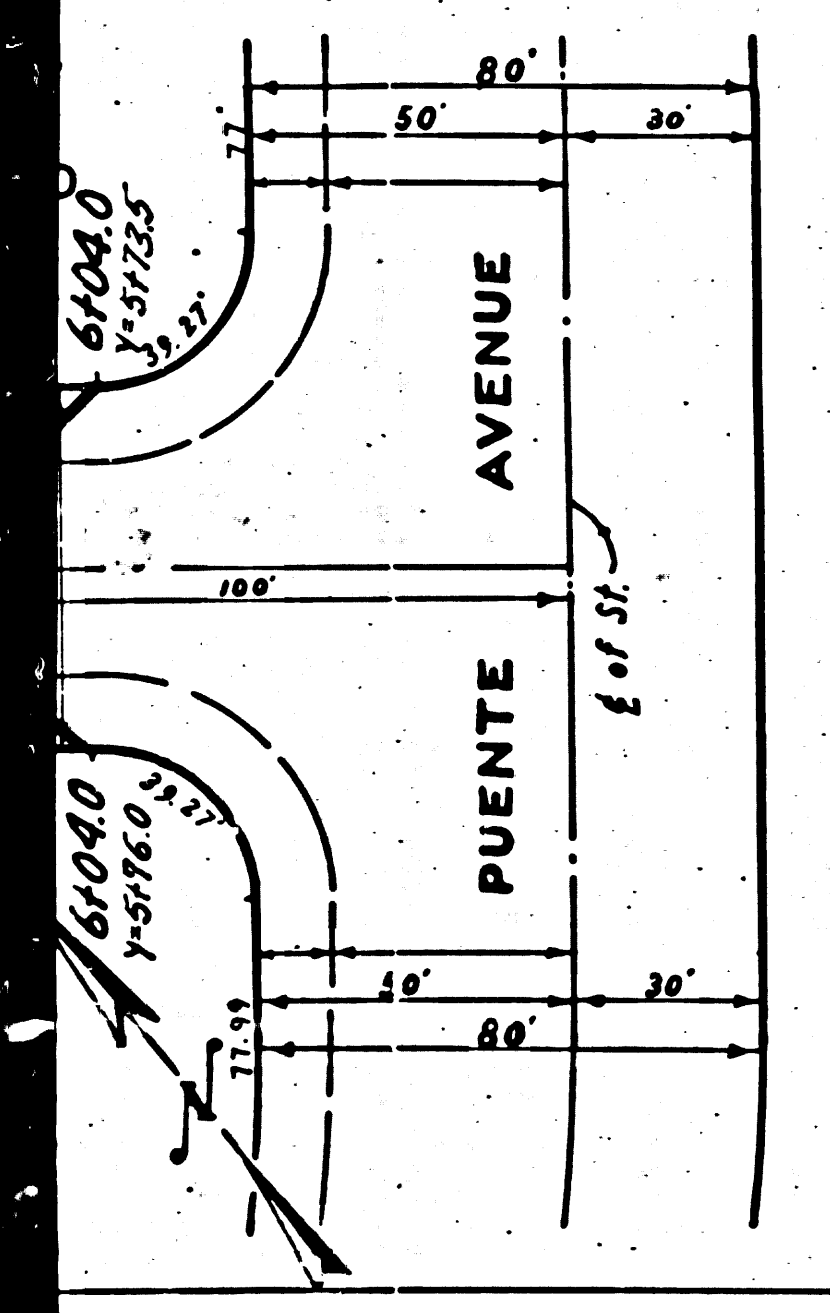
18,303



P.C. 2962
J.N. 0979.31
PAGE 12

NO CHARGE
FOR CONNECTIONS
EXCEPT AS NOTED

18,302



P.C. 2962
J.N. 0979.31
PAGE 14

18,304

COLLECT CHARGES
AS INDICATED

(B)

(B)

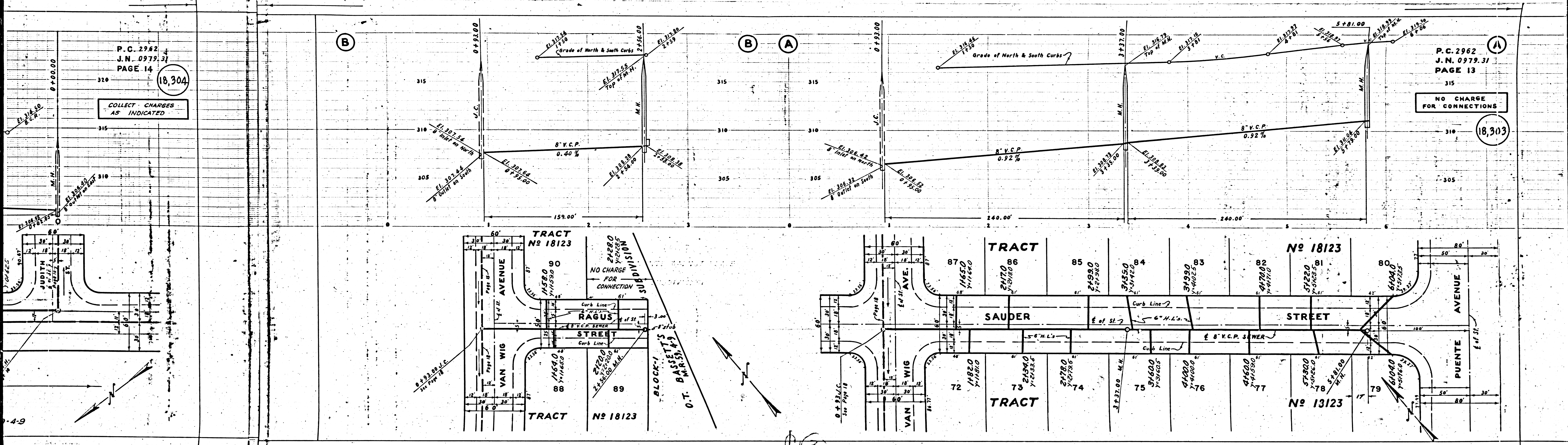
(A)

(A)

P.C. 2962
J.N. 0979.31
PAGE 13

18,303

NO CHARGE
FOR CONNECTIONS



P.C. 2962
J.N. 0979.31
PAGE 15

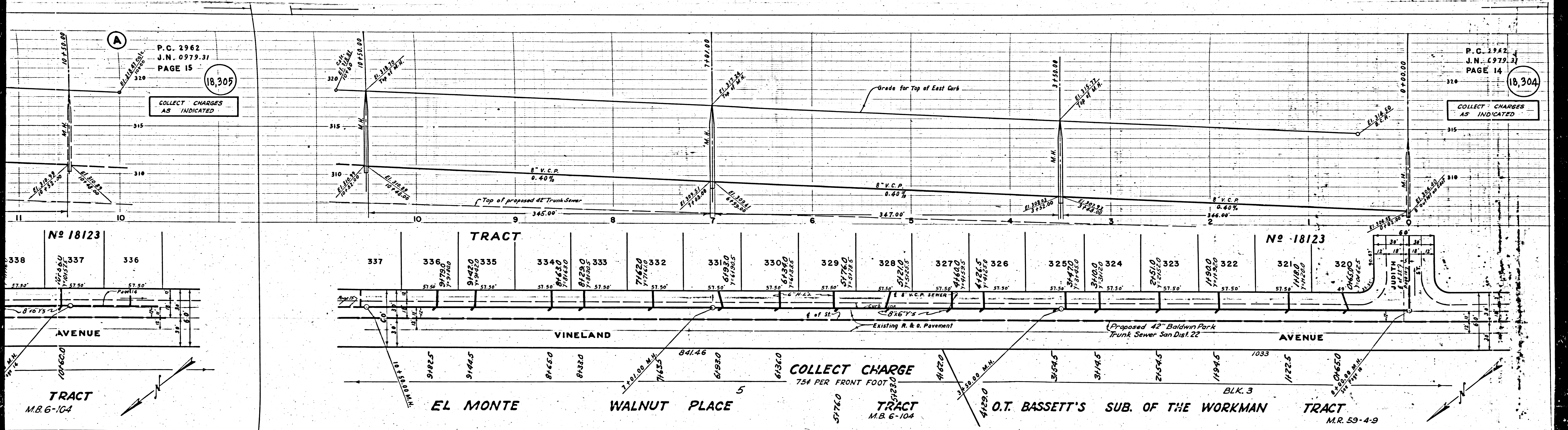
18,305

COLLECT CHARGES
AS INDICATED

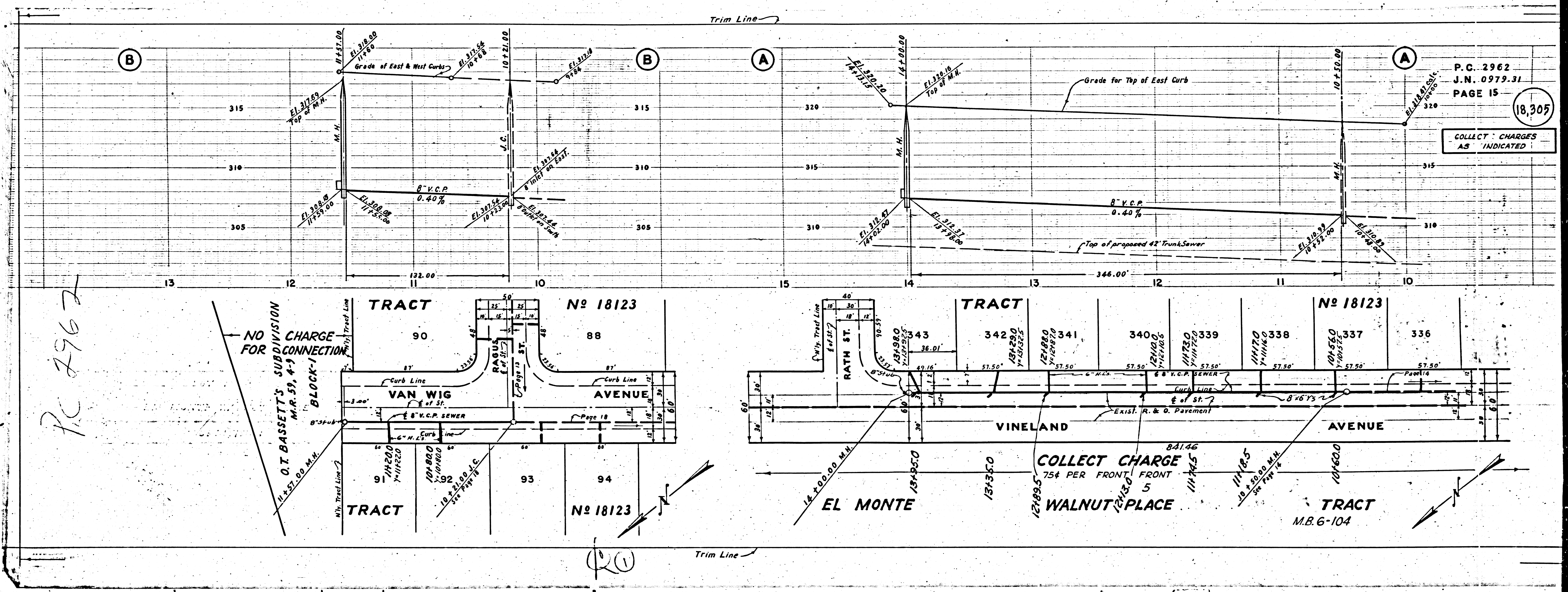
P.C. 2962
J.N. 0979.31
PAGE 14

18,304

COLLECT CHARGES
AS INDICATED



(2)



P.C. 2962
 J.N. 0979-31
 PAGE 15

18,305

COLLECT CHARGES
 AS INDICATED

P.C. 2962

NO CHARGE FOR
 SUBDIVISION CONNECTION
 O.T. BASSET'S SUBDIVISION
 M.R. 59, 4-3
 BLOCK-1

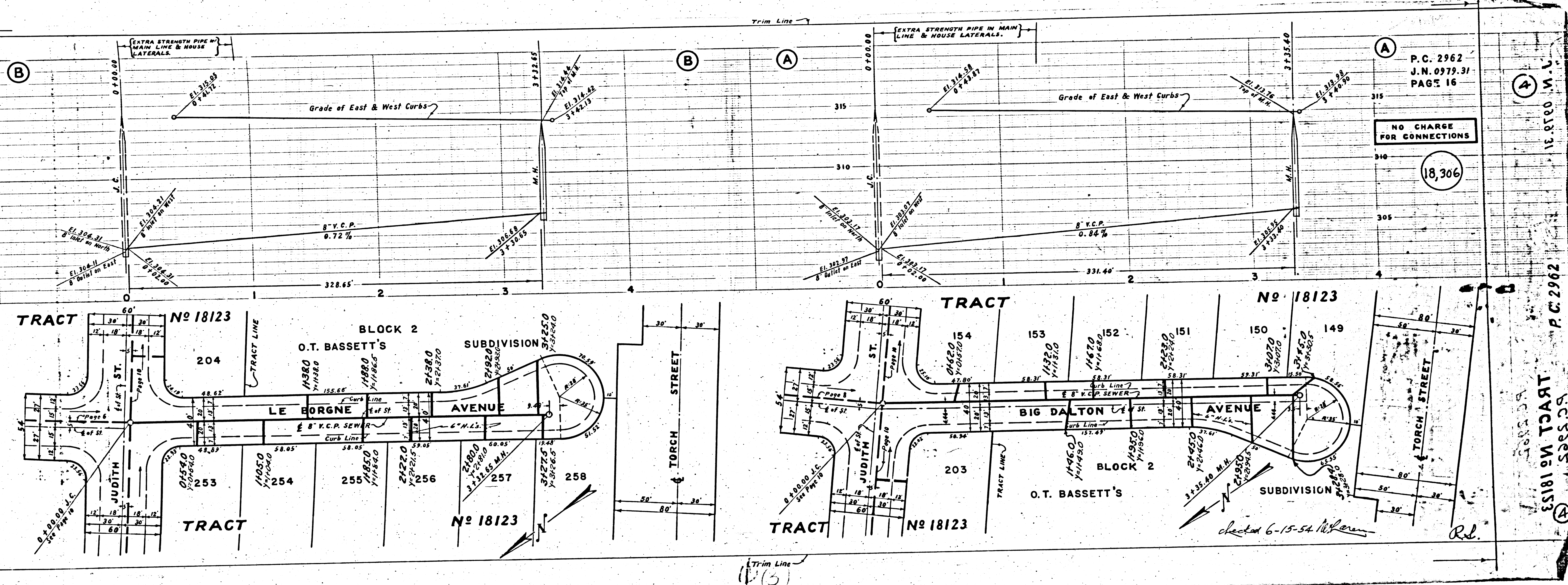
COLLECT CHARGE
 754 PER FRONT
 FRONT 5

11

2962
0979.31

18,307

CHARGE CONNECTIONS



P.C. 2962
J.N. 0979.31
PAGE 16

NO CHARGE FOR CONNECTIONS

18,306

P.C. 2962
J.N. 0979.31
PAGE 16

TRACT No 18123

P.C. 2962
J.N. 0979.31
PAGE 16

18,308

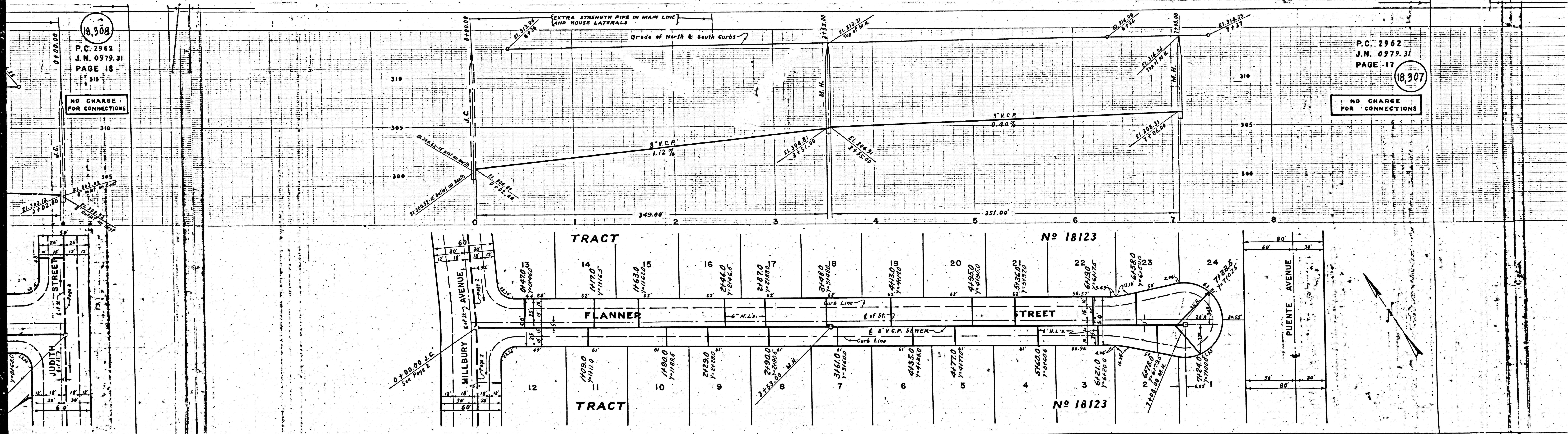
P.C. 2962
J.M. 0979.31
PAGE 18

NO CHARGE
FOR CONNECTIONS

P.C. 2962
J.M. 0979.31
PAGE 17

18,307

NO CHARGE
FOR CONNECTIONS



TRACT

No 18123

FLANNER STREET

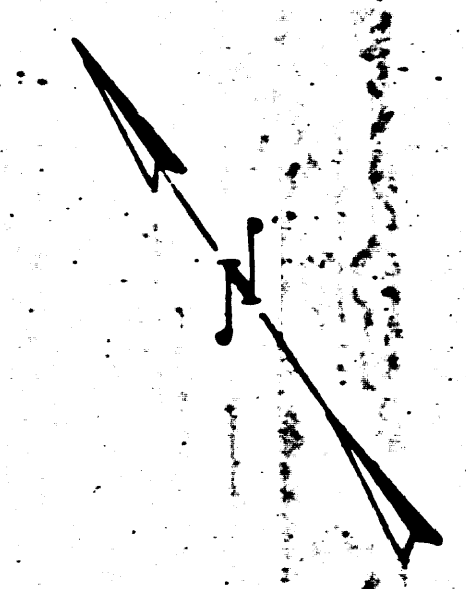
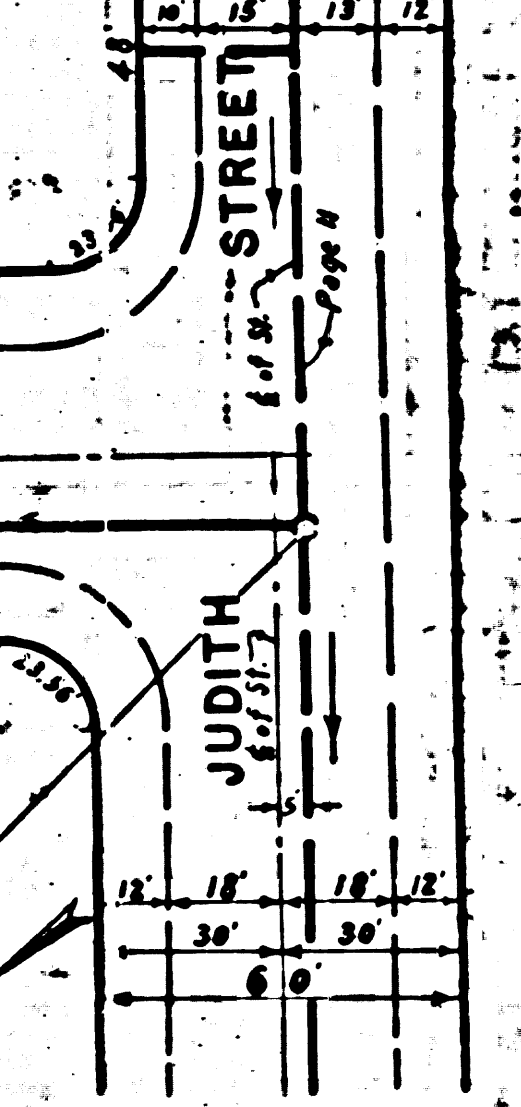
STREET

TRACT

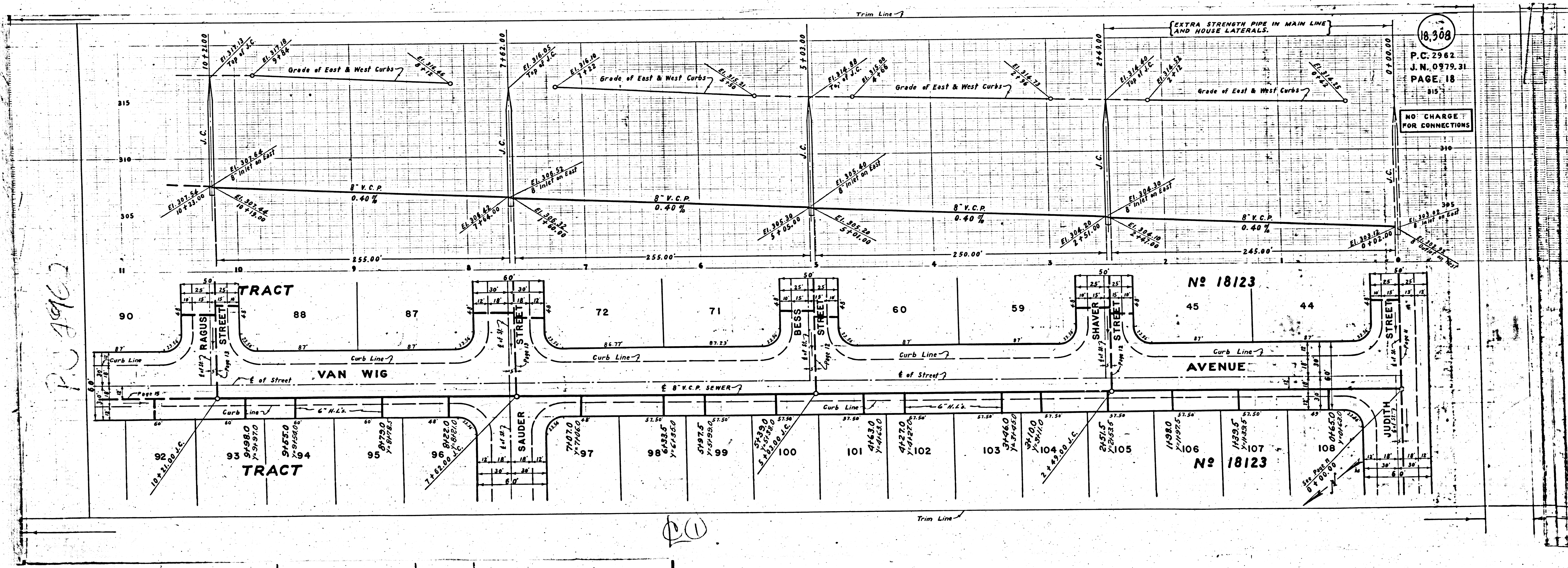
No 18123

MILLBURY AVENUE

PUENTE AVENUE



22



PC 2962

18.308

P.C. 2962
J.N. 0979.31
PAGE 18

NO CHARGE FOR CONNECTIONS

20