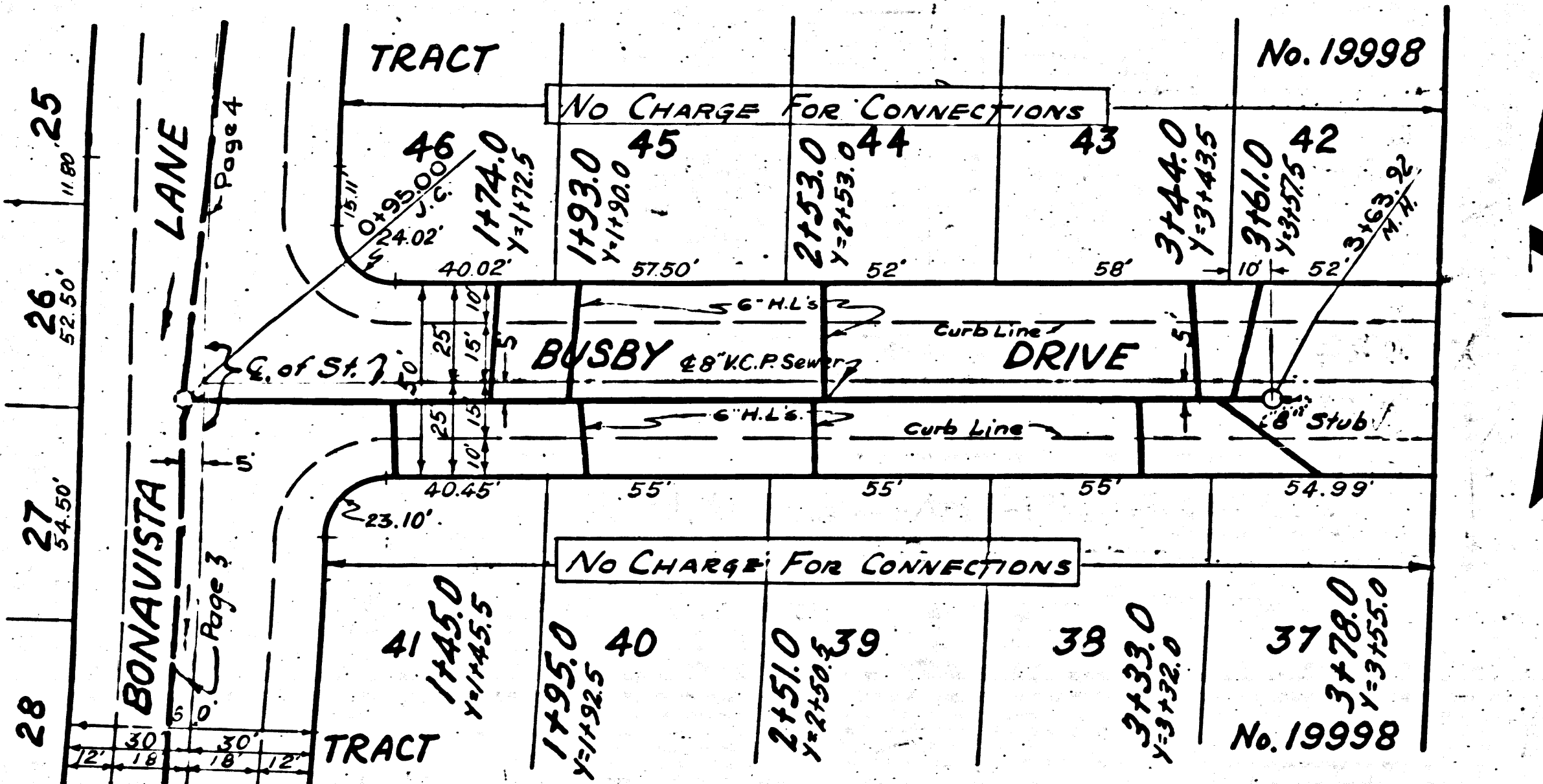
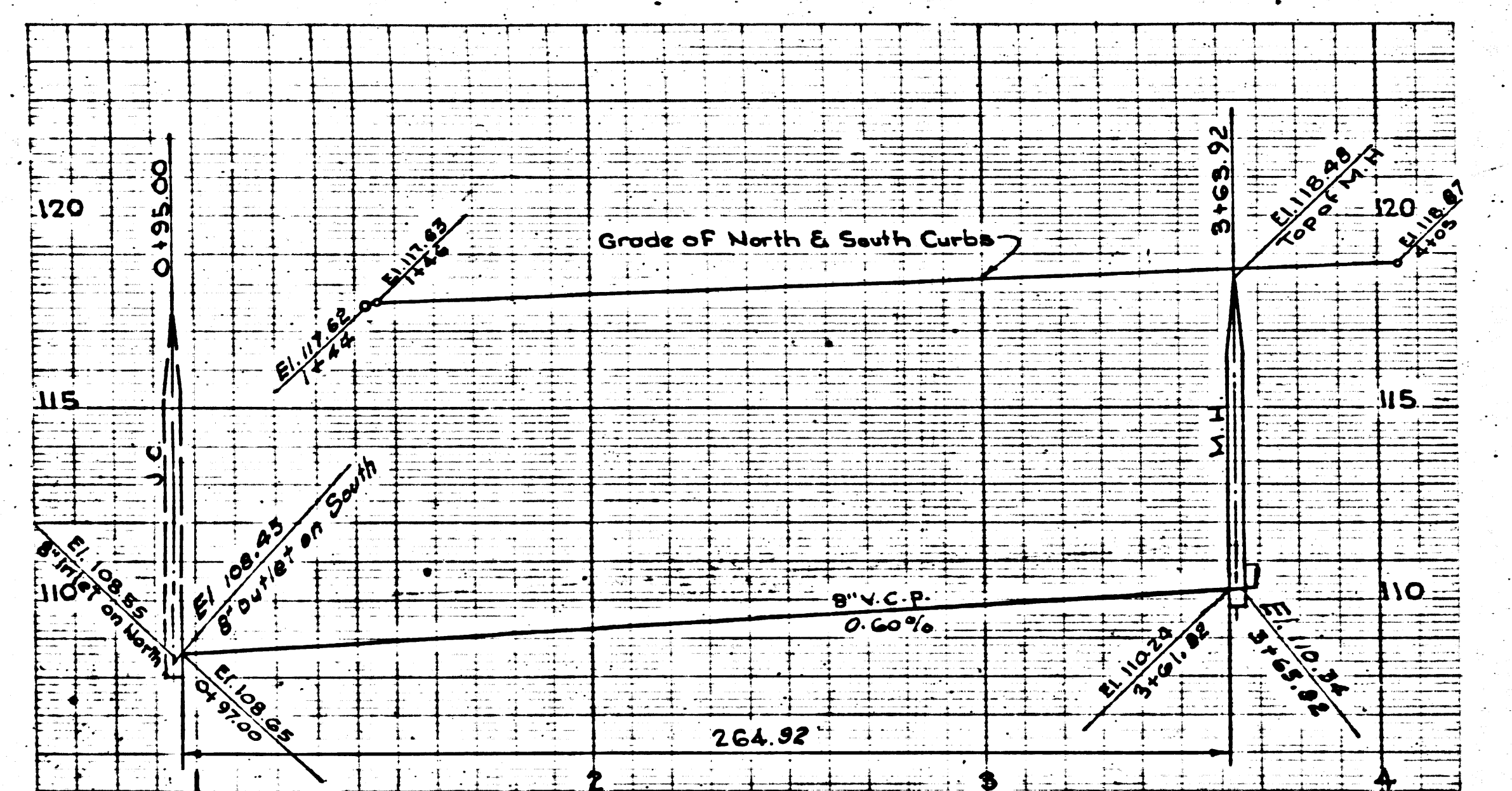


19,230

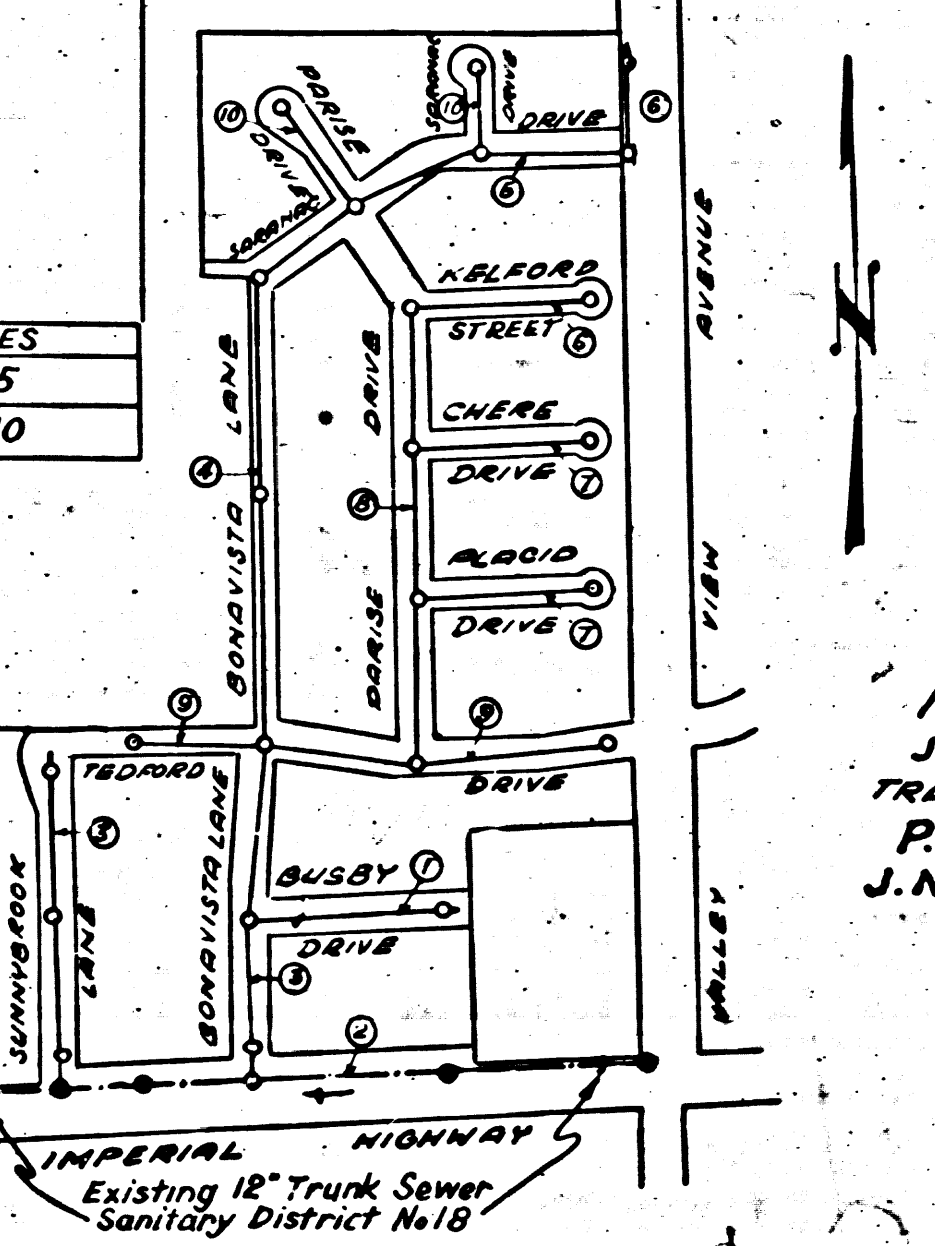


BELFLOWER BLDG. DIST. NO.(4)

- NOTE:
Provide stakes on the property lines or property lines produced at right angles to the sewer line at the center line of each manhole.
No representative of the County Engineer will survey or layout any portion of the work. The owner or his authorized representative shall furnish the County Engineer with grade sheets and stations for all house laterals and Y branches and shall provide stakes for them at their proper locations with stationing plainly marked. Any change in location shall be requested in writing by the owner or his representative.
No revisions shall be made in these plans without the approval of the County Engineer.
1. Use standard manhole frames and covers, S-a-117. Except as noted.
 2. Use standard strength pipe except as noted.
 3. Use cement mortar for all vitrified clay pipe joints.
 4. Resurface all trench within paved area to meet L.A. County Road Dept. or Calif. State Highway Dept. requirements in accordance with permit.
 5. Encase four feet of sewer at points of interference with poles, S-a-119.
 6. House laterals to be constructed with inverts at property line... feet below curb grade except as noted.
 7. All structures shall be brick sewer structures, S-a-104. Except as noted.
 8. Manhole tops in unimproved Rights-Of-Way to be 6" above finish grade.
 9. For allowable leakage test, use Formula No. 1000, Specs., Sec. 51.

Bench Mark
L.A. Co. Rd. Dept. 57 1179, Pg. 518
Elev. 118.034. Lead & Back in East
Side of conc. driveway to
House No. 14223 2 4' South
of E. of Leppington Road.

SHEET No.	PAGES
1	1-5
2	6-10



COLLECT CHARGES AS INDICATED

before breaking into any existing structure and before final acceptance of this work. County Sanitation District should be notified in order that required inspection may be made.

INDEX MAP
SCALE 1"=400'
TRACT NO. 19998
P.C. 2969
J.N. 0980.31

checked 11-10-54

PROFILE, ALIGNMENT AND GRADE OF
SANITARY SEWERS
TO BE CONSTRUCTED IN

TRACT NO. 19998

PRIVATE CONTRACT NO. 2969
W. S. 34
SHEET 1 OF 2 SHEETS
Scale: VERT. 1"=40'
HORIZ. 1"=40'
MAY, 1954
PREPARED IN THE OFFICES OF
WM. H. FAIR, JR.
By *W. H. Fair, Jr.*
FOR LEGEND SEE PLAN NO. S-a-64

PC 2969
J.N. 0980.31
PAGE 1

19,229

NOTE:
Grades to which this improvement is to be constructed are shown on plans and profiles. Grade points for top of curbs, center line of streets, or center line of alleys are shown by circles on profiles. At all points between designated points the grade shall be established so as to conform to a straight line drawn between said designated points.
Elevations are in feet above U.S.C.S. datum or mean sea level.
This drawing and the data hereon are hereby made a part of the specifications.
Work shall be constructed according to specifications on file in the office of the County Engineer and shall be prosecuted only in the presence of the County Engineer.
Before work can be started, the contractor must obtain a permit to excavate in County streets from the L.A. County Road Dept., 108 W. 2nd St. and make a deposit with the County Engineer, 733 L.A. County Engineering Building, sufficient to cover the cost of construction inspection and record plans.
Approval of this plan by the County of Los Angeles does not constitute a representation as to the accuracy of the location of or the existence or non-existence of any underground utility, pipe, or structure within the limits of this project. This note applies to all sheets.
If work is to be done in a State Highway, a permit must be obtained from the State of California, Division of Highways, 120 South Spring Street.

COUNTY OF LOS ANGELES, CALIFORNIA
Approved, William J. Fox, County Engineer
Approved, A. M. Rawm
CHIEF ENGR. CO. SAN. DIST. NO. 10
By *A. P. Collins*
SANITATION ENGINEER
Checked By *A. H. Hughes*
Office of County Engineer, Box 1, E. No. 5439

TRACT NO. 19998 P.C. 2969

P.L.

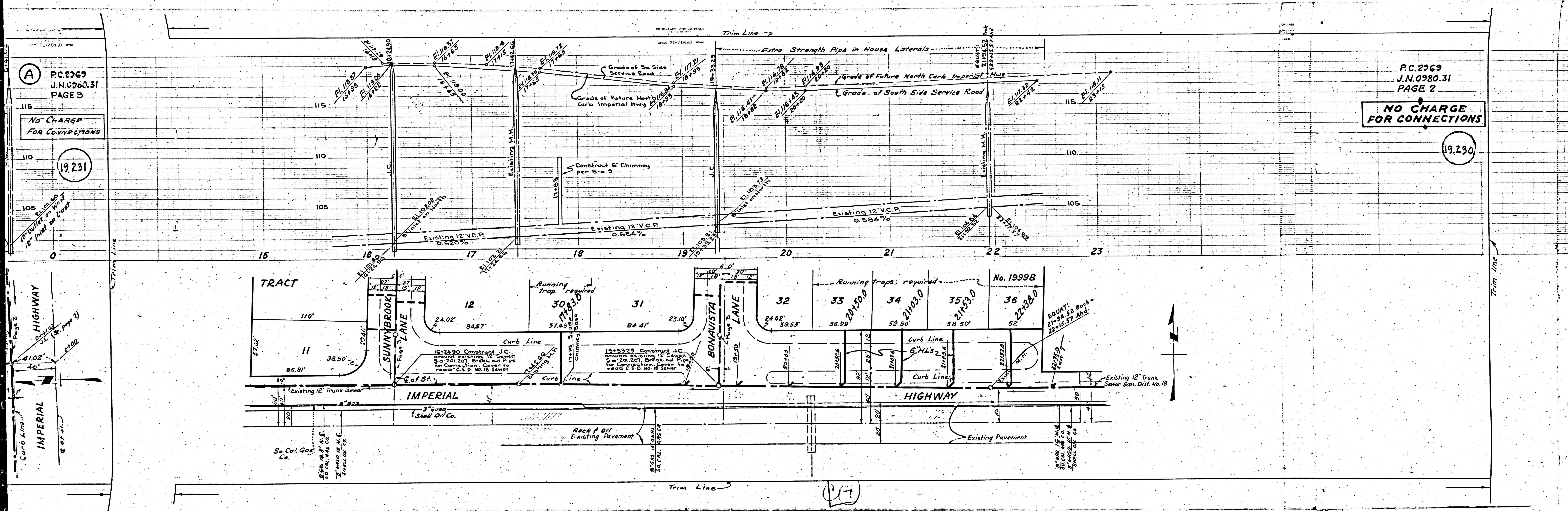
(A) P.C. 2369
J.N. 0980.31
PAGE 3
NO CHARGE
FOR CONNECTIONS

(19,231)

P.C. 2369
J.N. 0980.31
PAGE 2

NO CHARGE
FOR CONNECTIONS

(19,230)



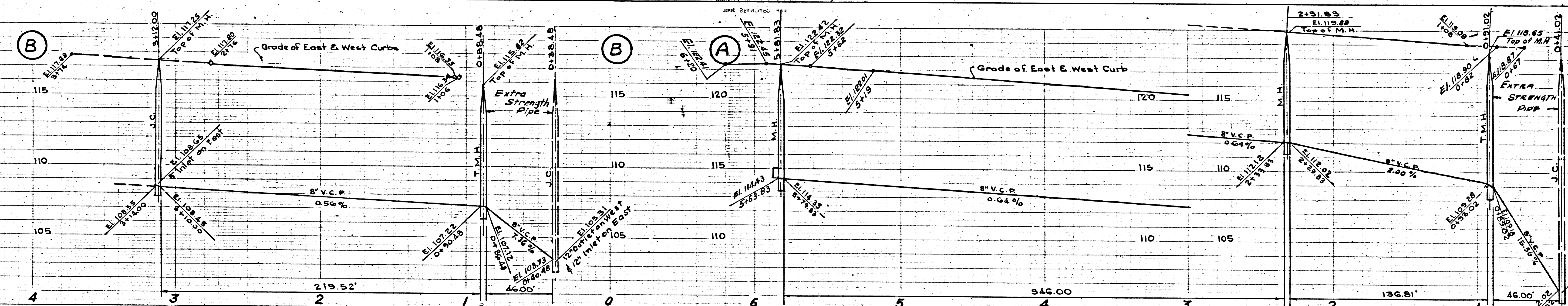
PC.2963
J.N.0980.31
PAGE 4

COLLECT CHARGES
AS INDICATED

19,232

No. 19998

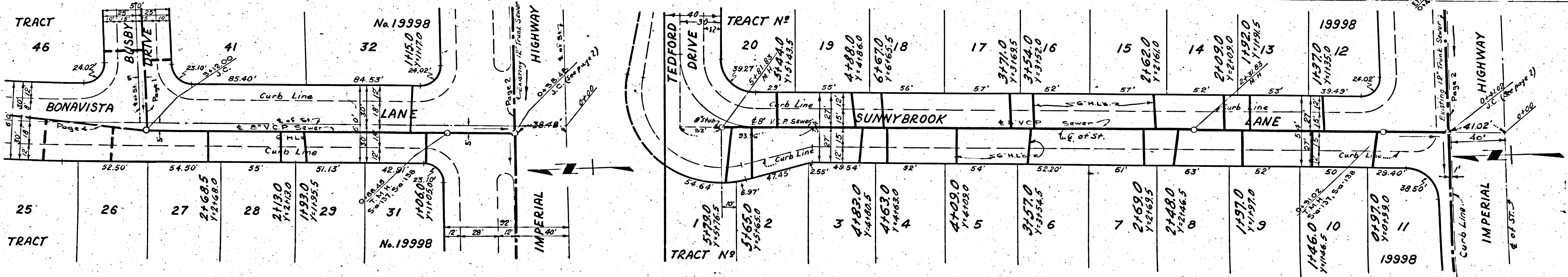
27
28
No. 19998



PC.2969
J.N.0980.31
PAGE 3

No CHARGE
FOR CONNECTIONS

19,231



Trim Line

PC.2969
J.N.0980.31
PAGE 5

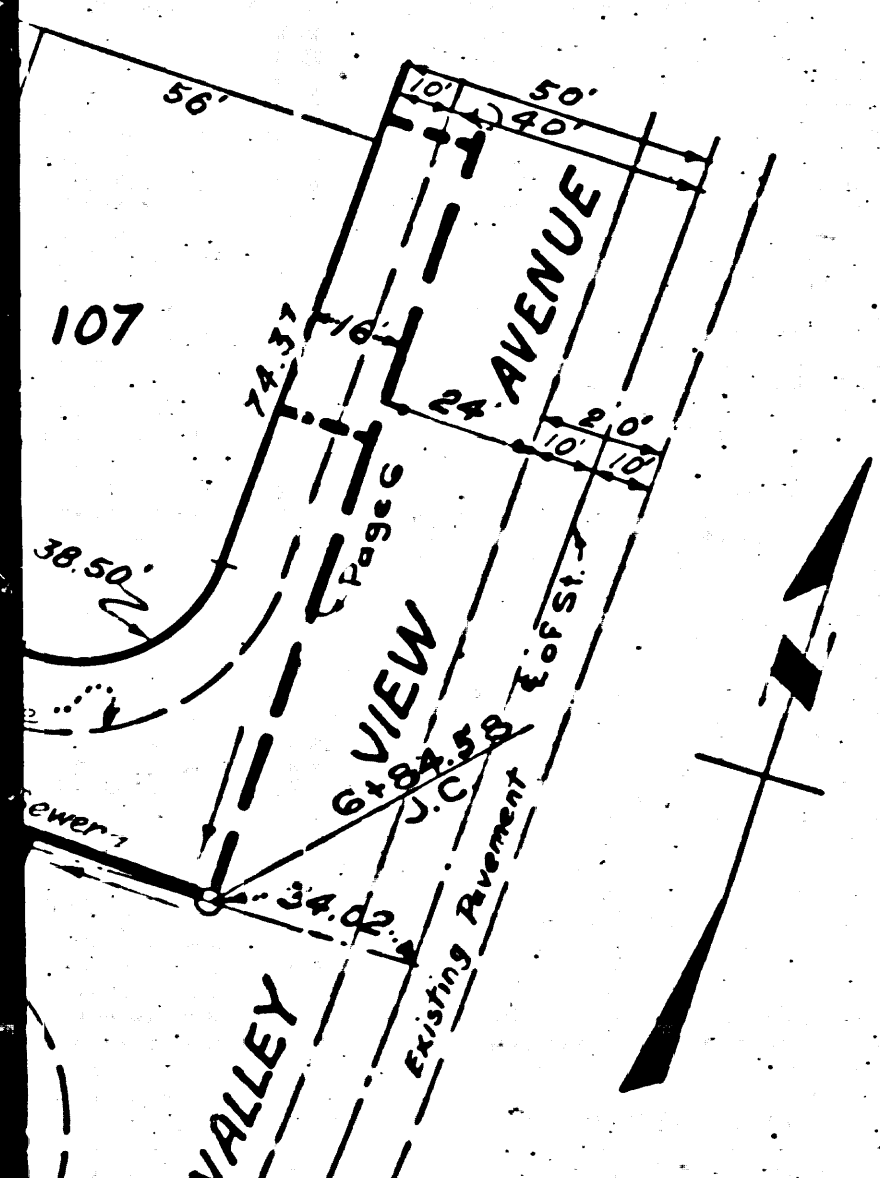
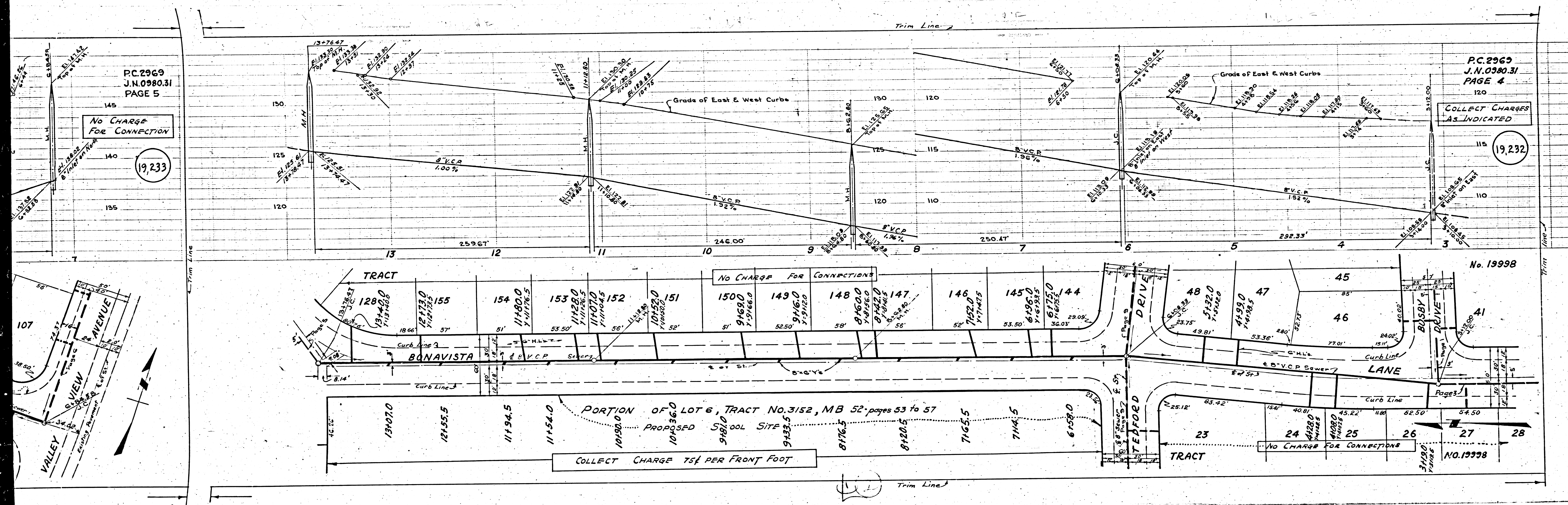
No CHARGE
FOR CONNECTION

19,233

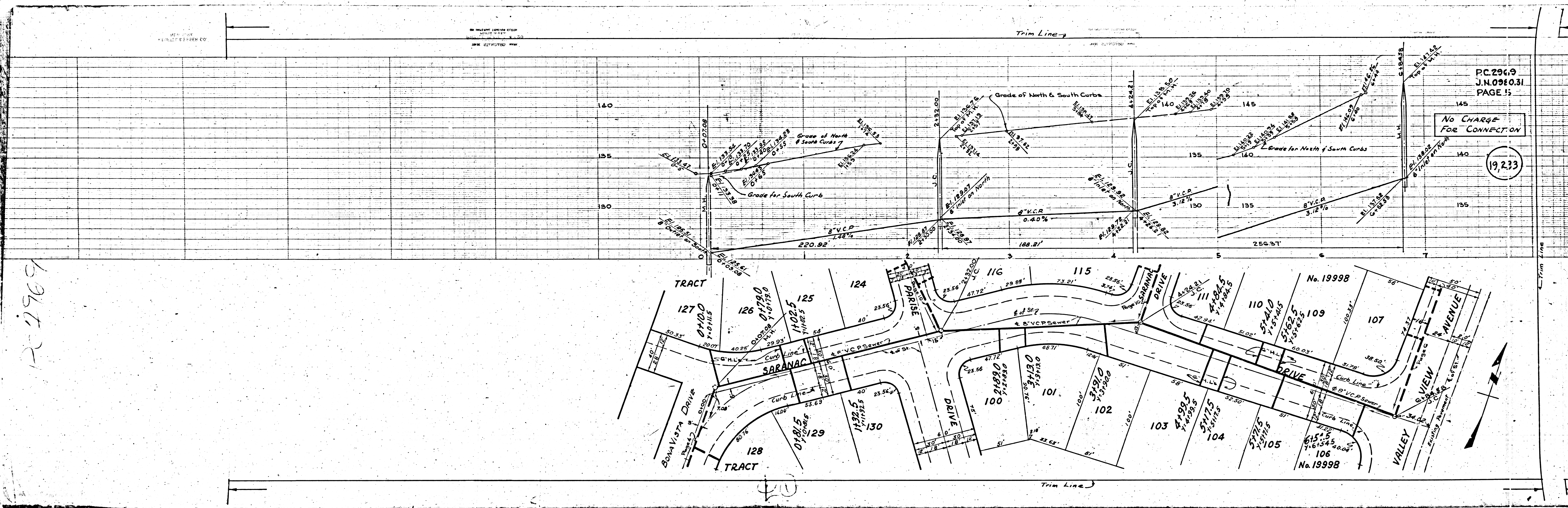
PC.2969
J.N.0980.31
PAGE 4

COLLECT CHARGES
AS INDICATED

19,232



PC 2969



PC 2969
J.N.0980.31
PAGE 13

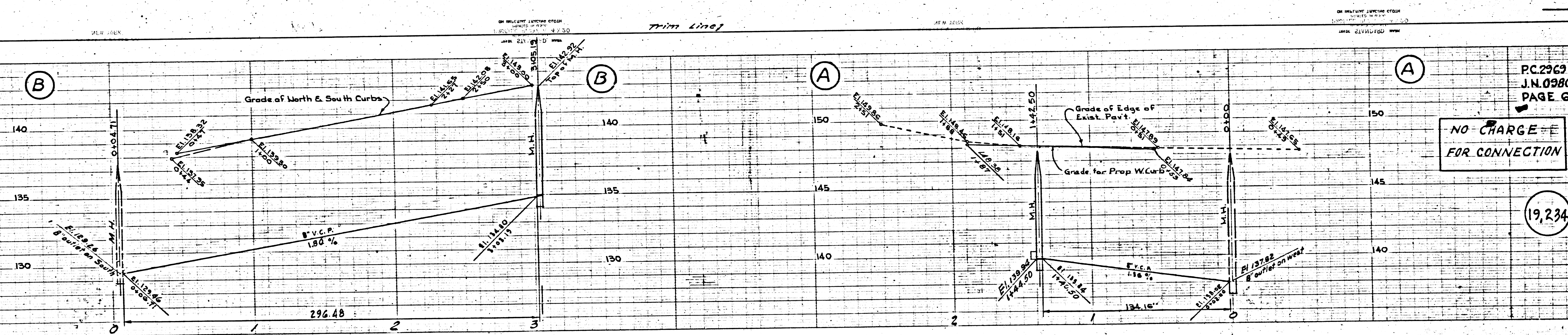
NO CHARGE
FOR CONNECTION

19,233

PC 2969
J.N. 0980.31
PAGE 7

SECTION

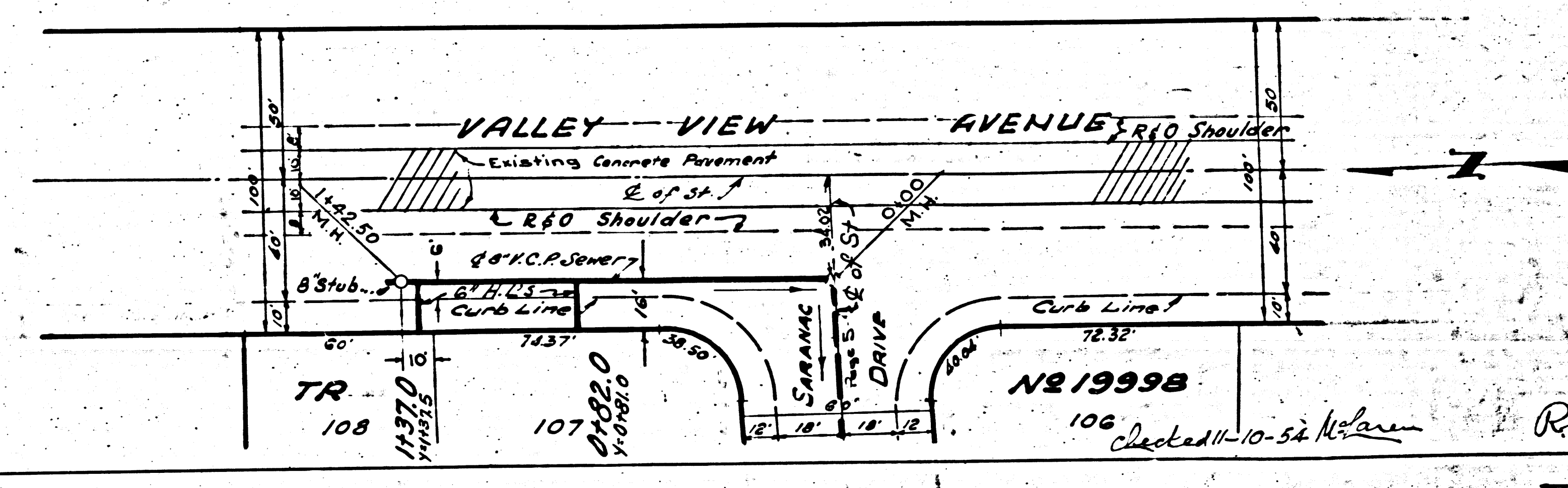
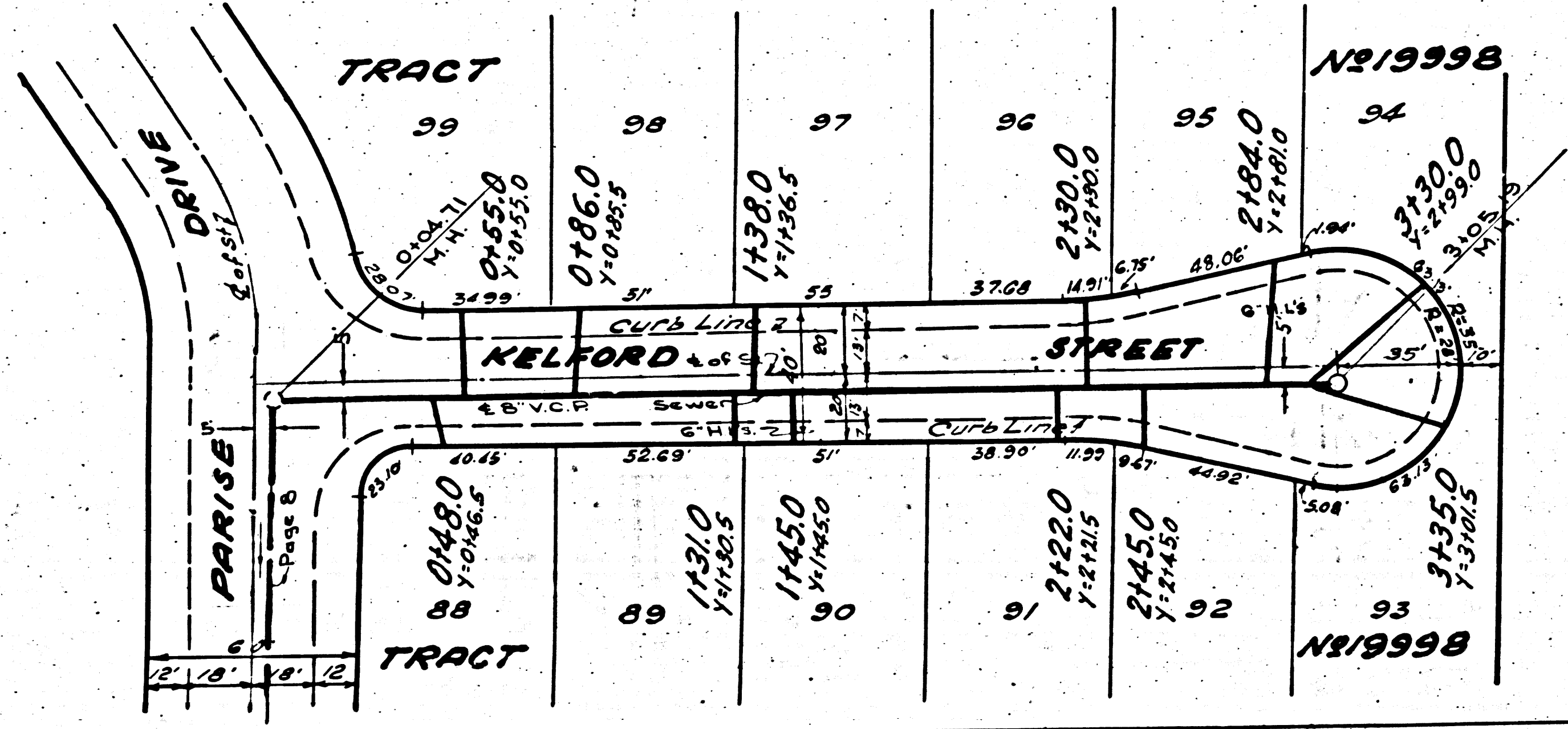
(19,235)



PC 2969
J.N. 0980.31
PAGE 6

NO CHARGE
FOR CONNECTION

(19,234)



TRACT NO. 19998

P.C. 2969

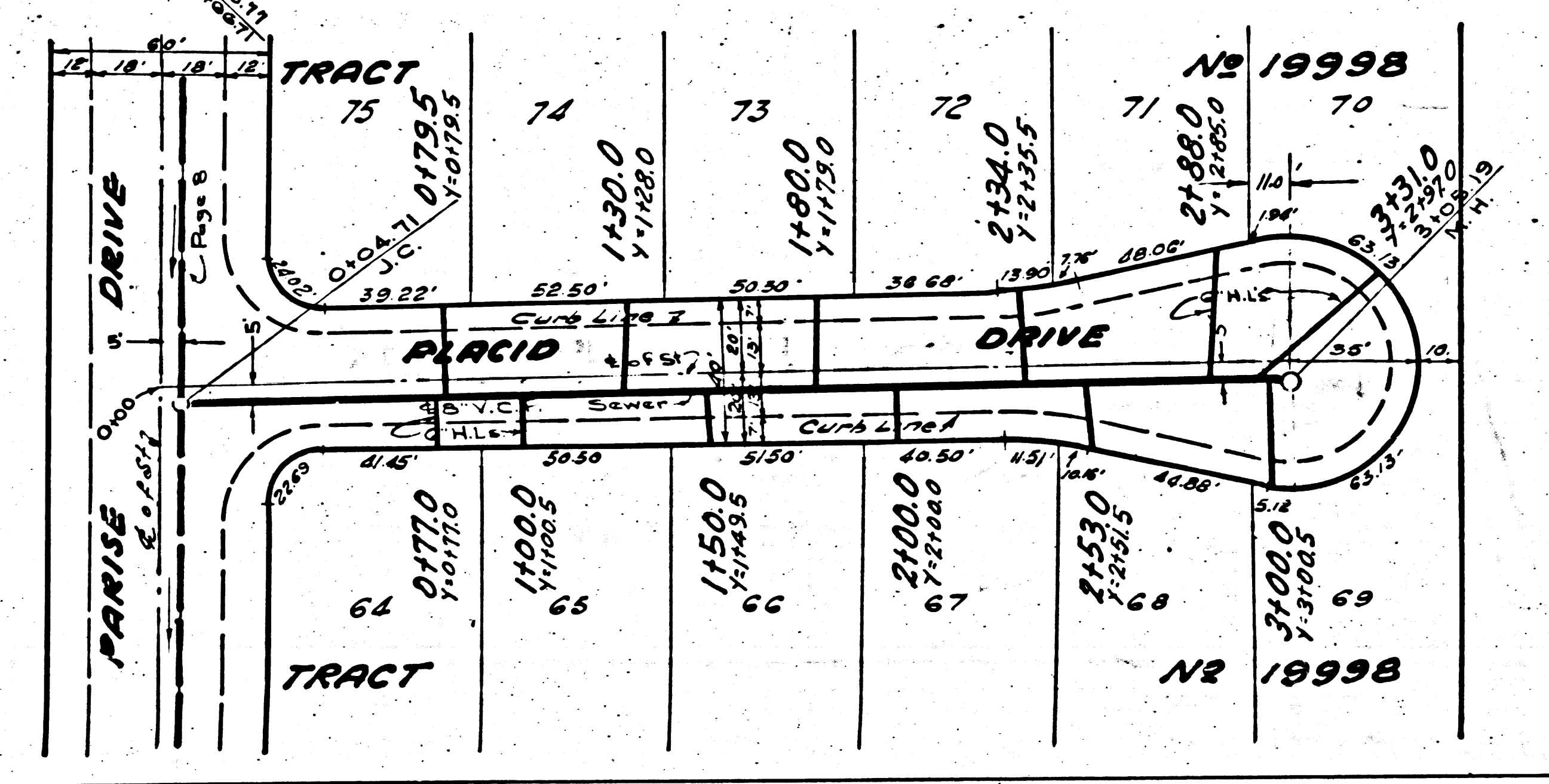
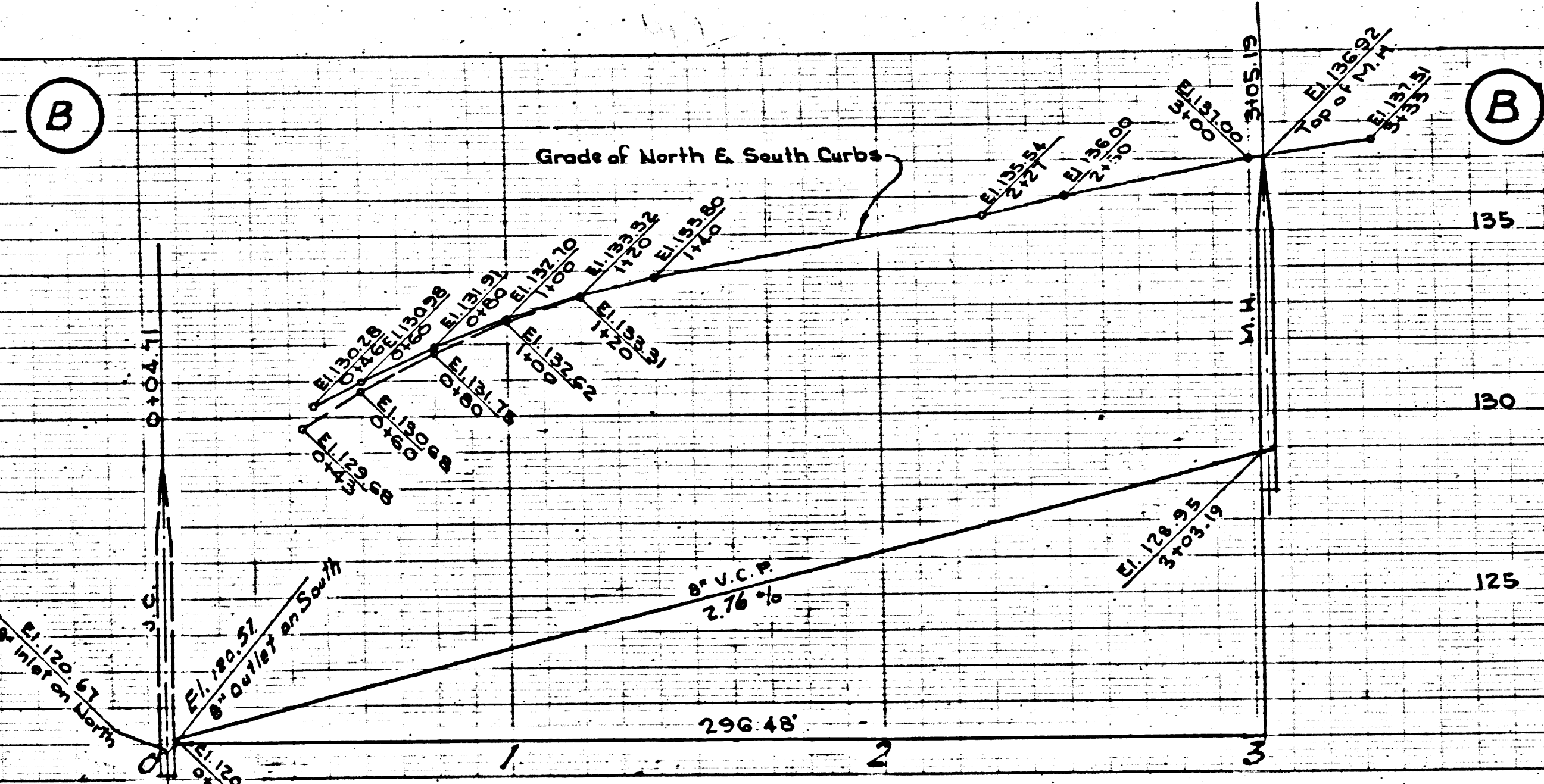
E. 0860 W.V.
825 S.D.

(5)

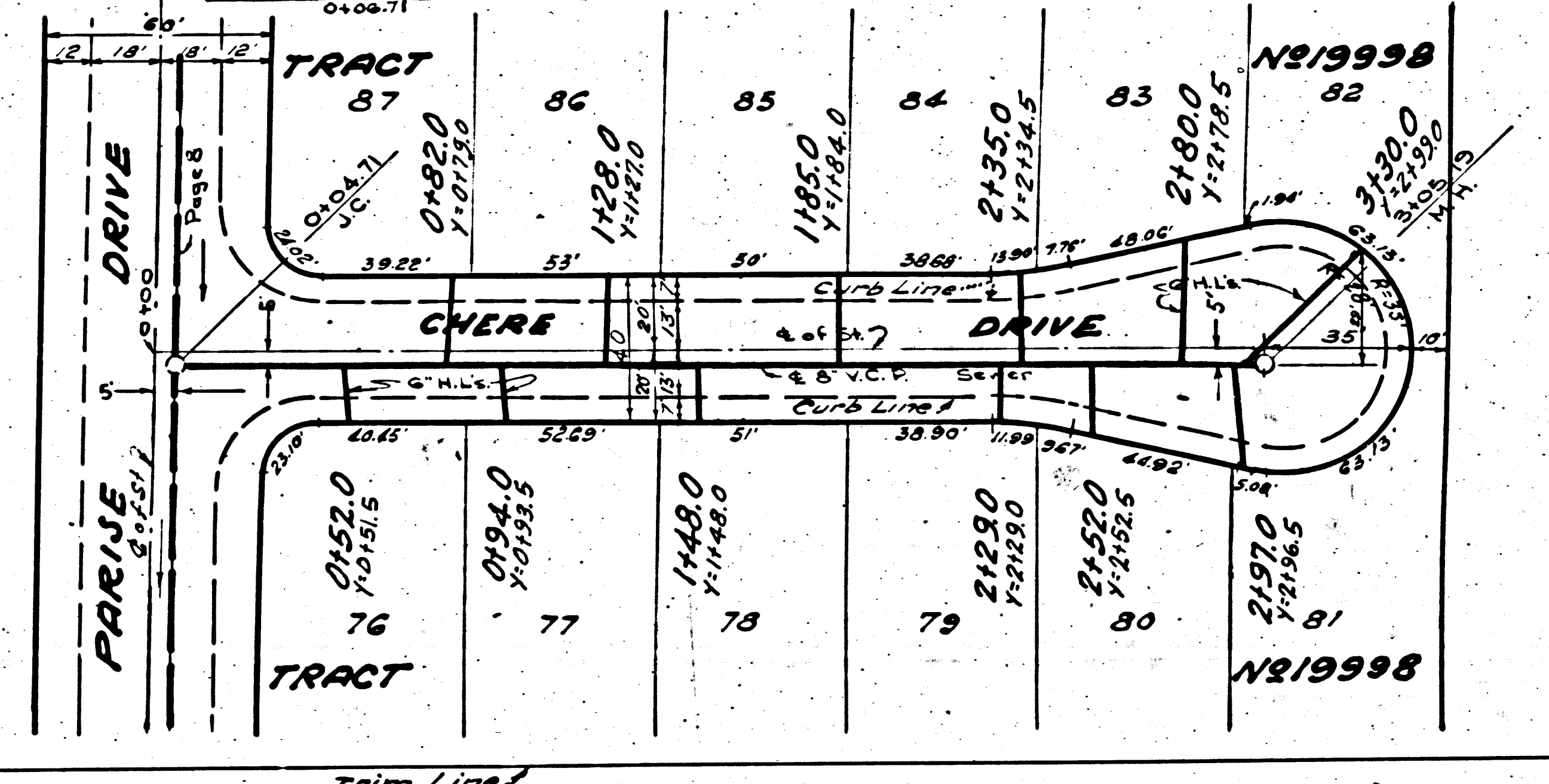
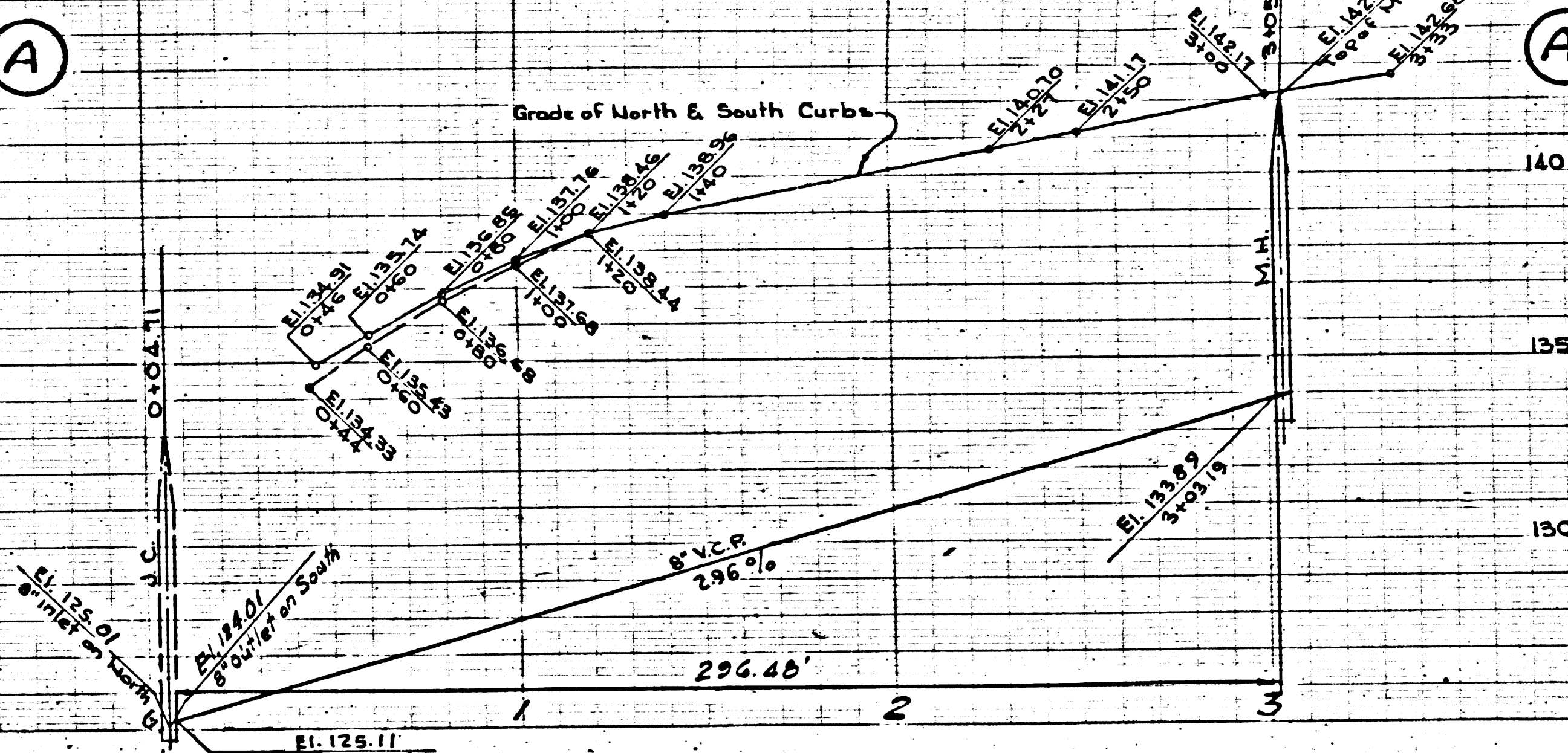
PC 2969
J.N. 0980.31
PAGE 8

ARGE
NECTION

19,236



NR 19998



NR 19998

PC 2969
J.N. 0980.31
PAGE 7

NO CHARGE
FOR CONNECTION

19,235

PC 2962
J.N.0280.3
PAGE 9

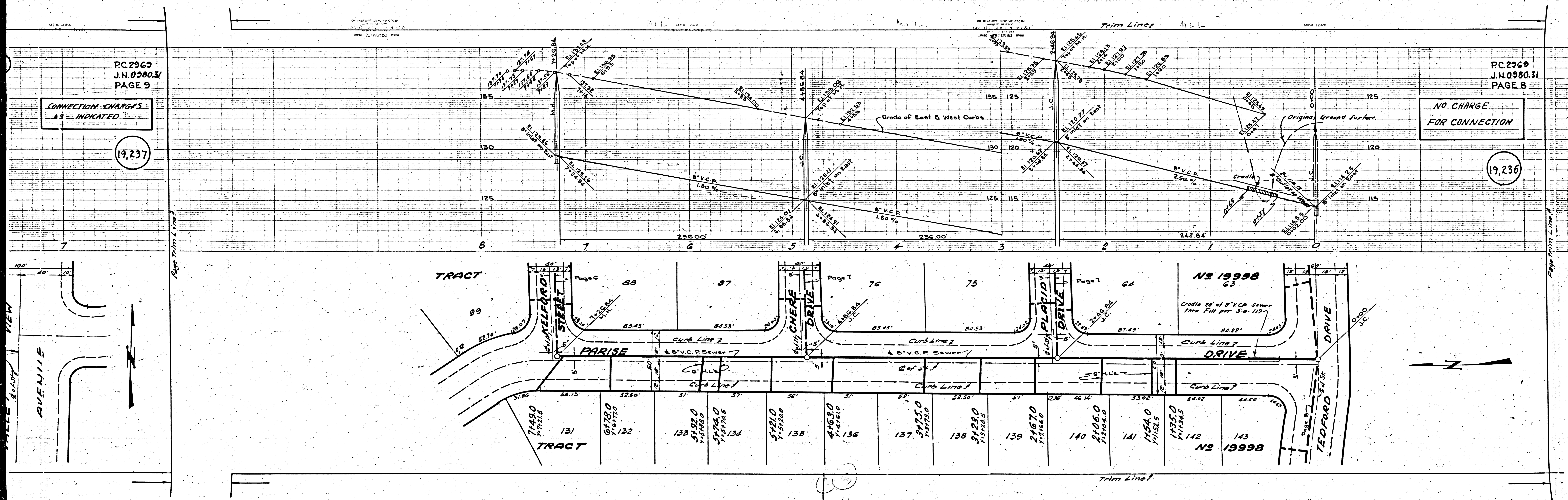
CONNECTION CHARGES
AS INDICATED

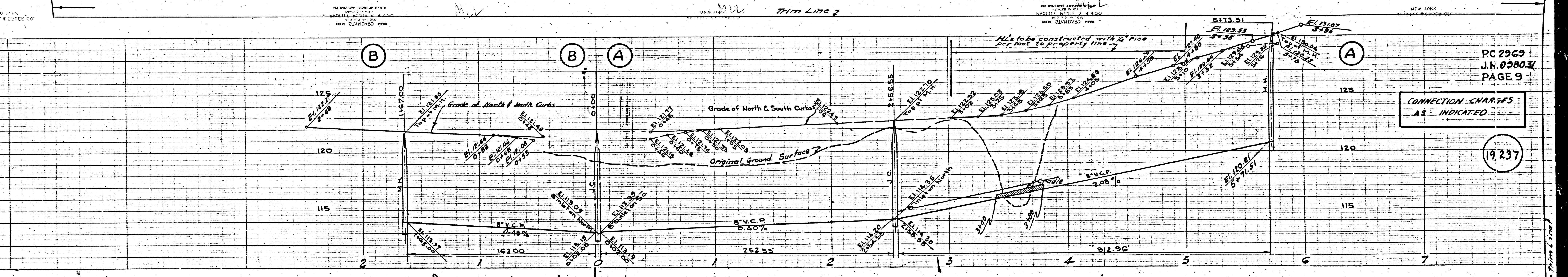
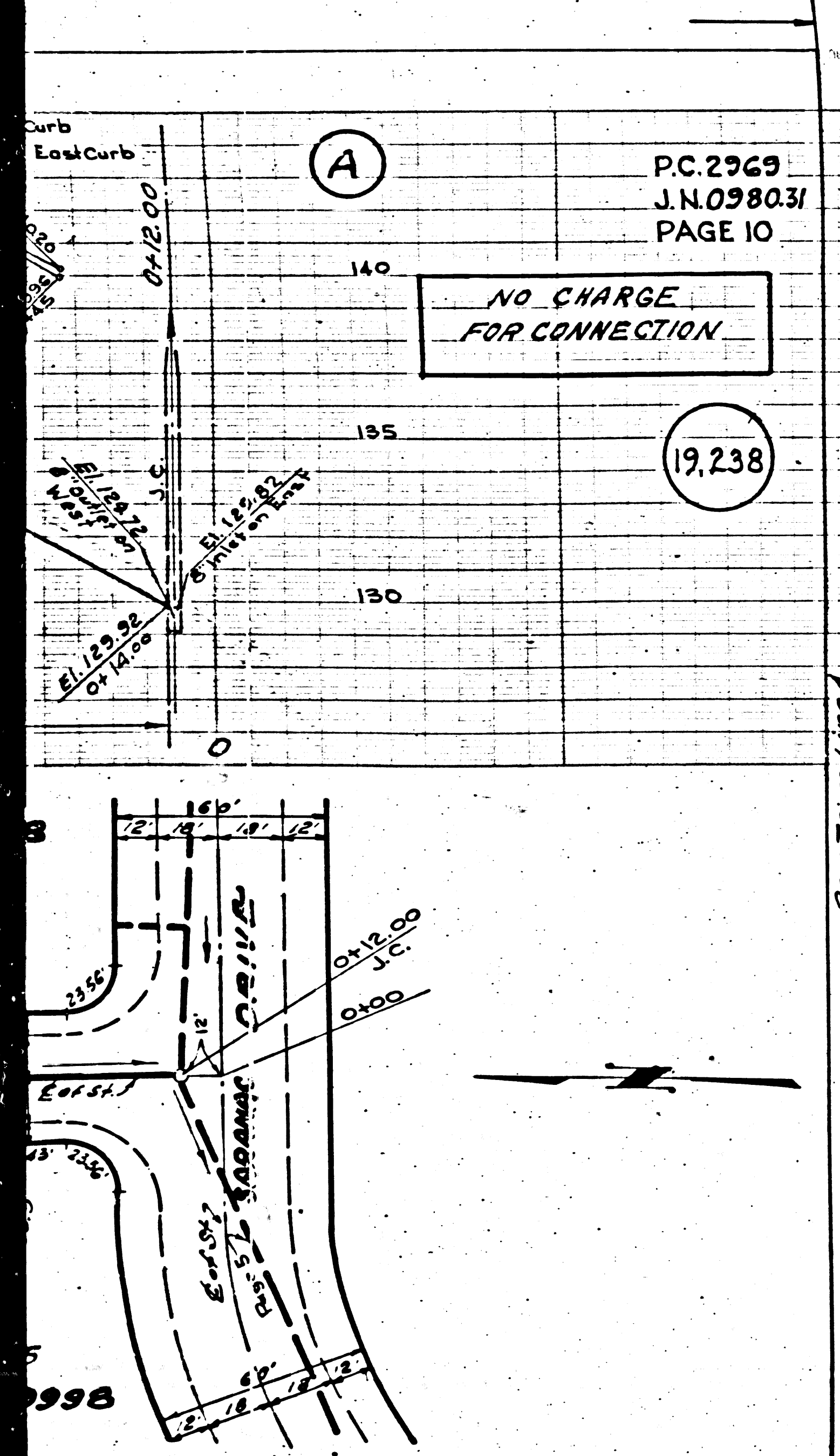
19,237

PC 2969
J.N.0280.3
PAGE 8

NO CHARGE
FOR CONNECTION

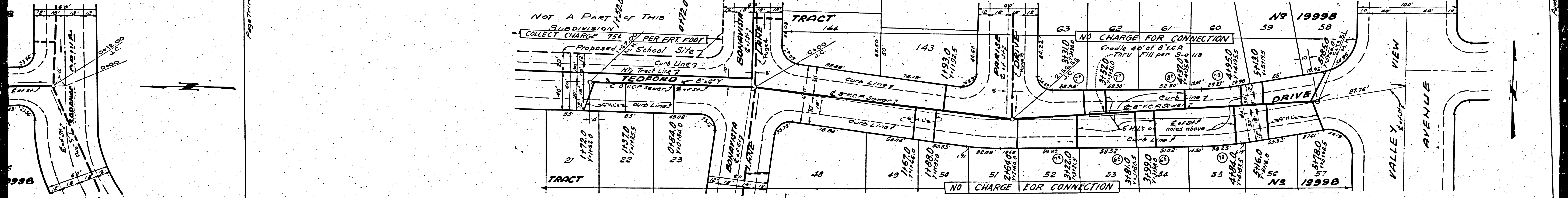
19,236





PC 2969
J.N. 09803
PAGE 10
NO CHARGE FOR CONNECTION
19.238

PC 2969
J.N. 09803
PAGE 9
CONNECTION CHARGES AS INDICATED
19.237



PC 2969
J.N. 09803
PAGE 10
NO CHARGE FOR CONNECTION
19.238

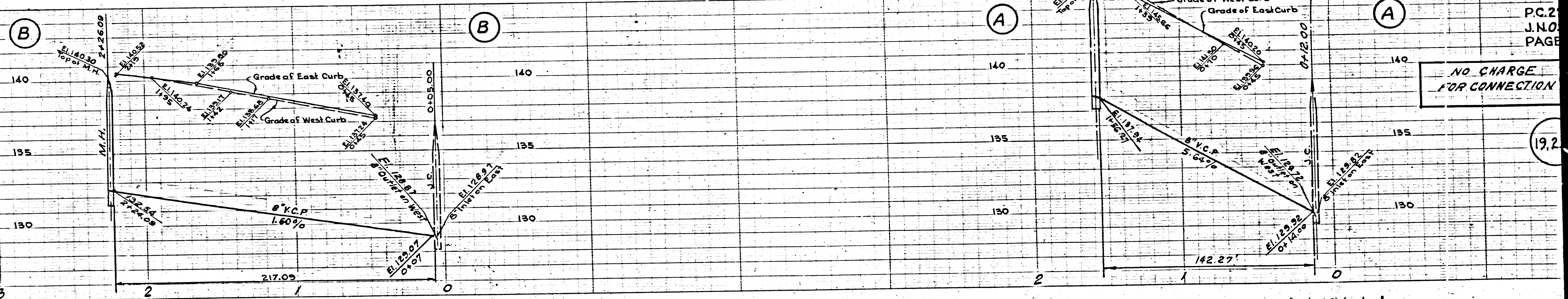
PC 2969
J.N. 09803
PAGE 9
CONNECTION CHARGES AS INDICATED
19.237

BY INSTRUMENT NUMBER 25784
RECORDED IN BOOK 4 PAGE 257
DATE 2/10/1998

BY INSTRUMENT NUMBER 25784
RECORDED IN BOOK 4 PAGE 257
DATE 2/10/1998

Trim Lines

BY INSTRUMENT NUMBER 25784
RECORDED IN BOOK 4 PAGE 257
DATE 2/10/1998

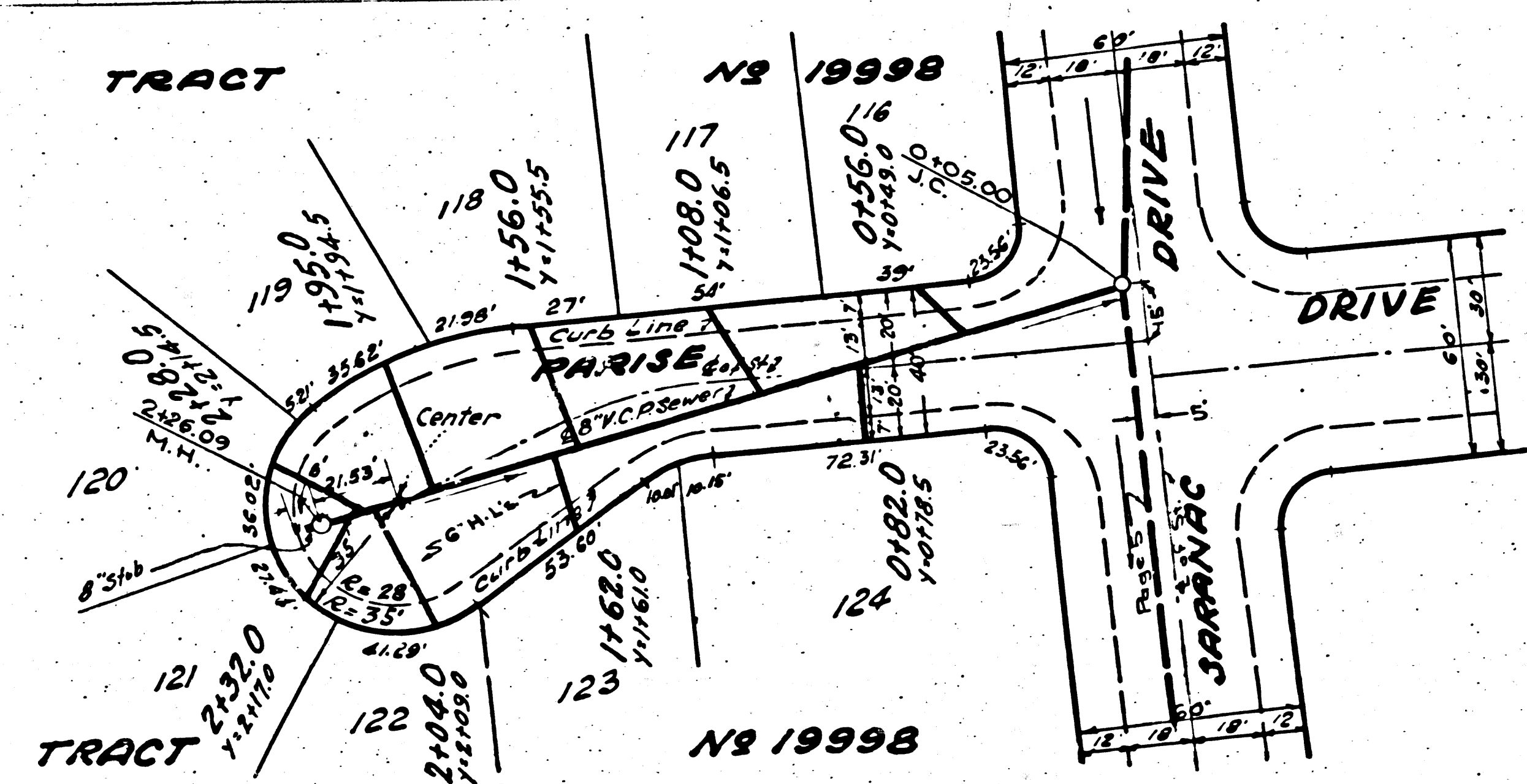


P.C. 2
J.N.O.
PAGE

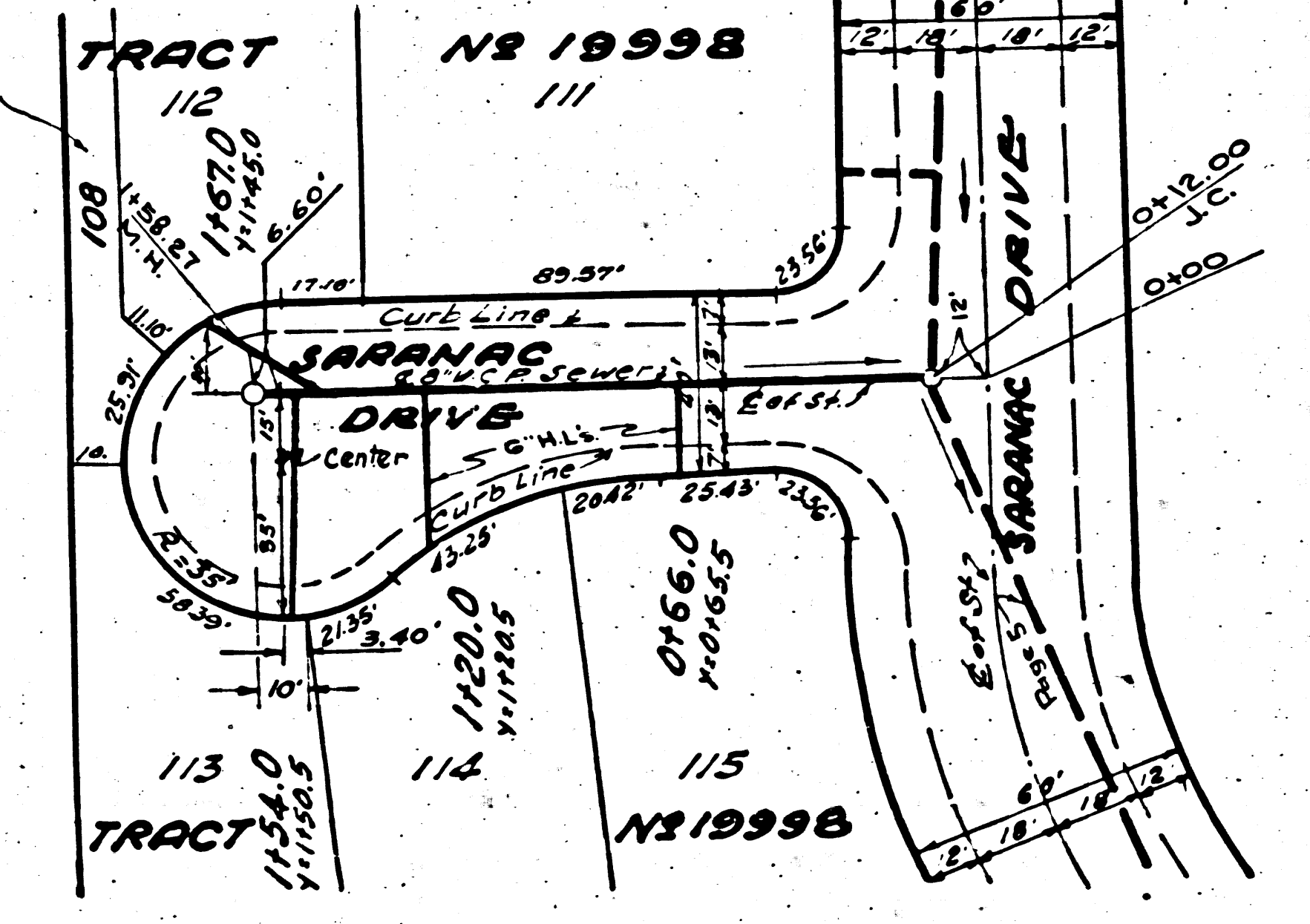
NO CHARGE
FOR CONNECTION

19.2

PC 25784



Lot 108 Served
by Sewer on
Valley View.
Page 6



DU

Trim Lines