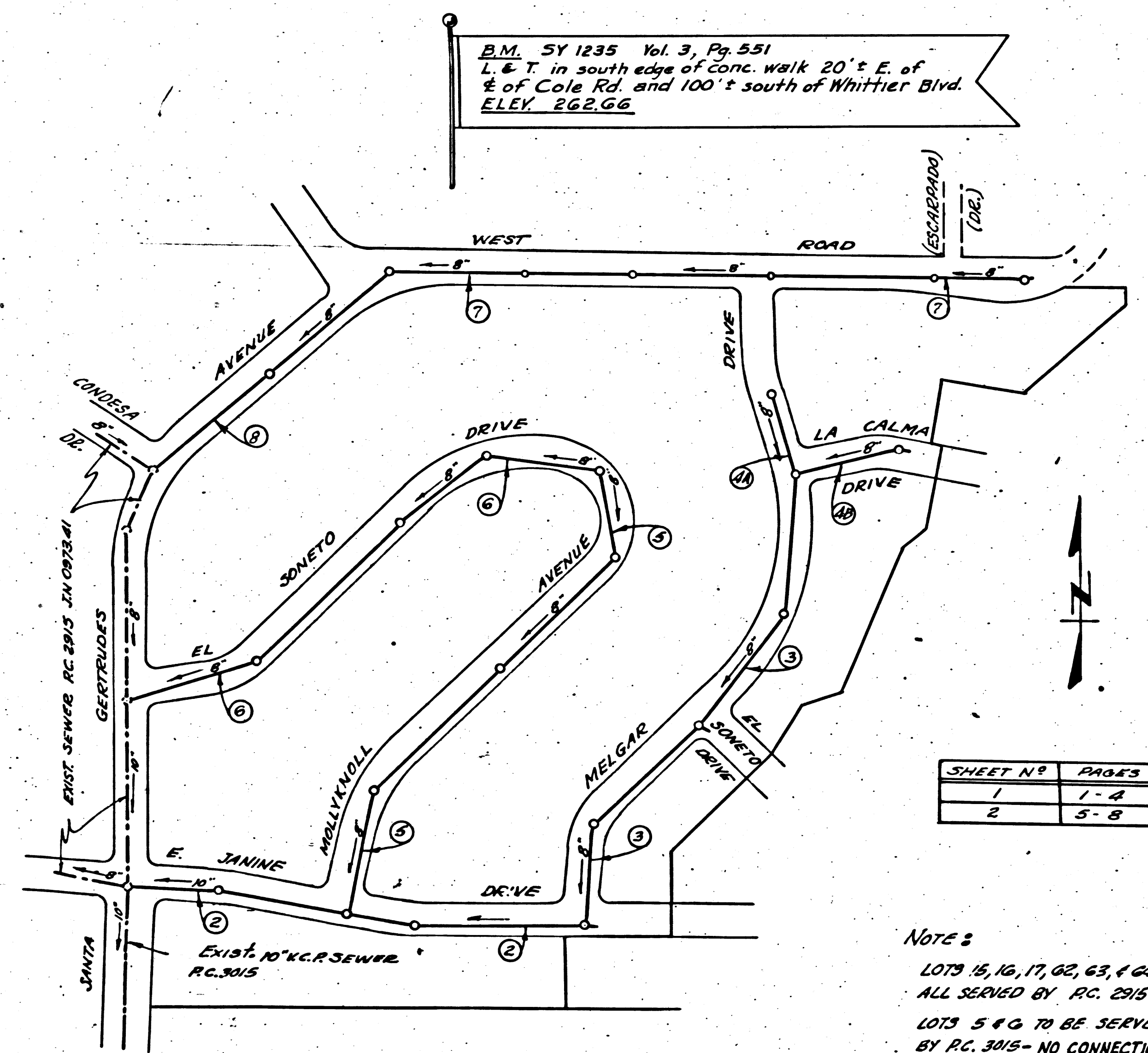


71
180.51
2
SCALE
(18,803)
LARGE
ATED



INDEX MAP
TRACT NO 17922
SCALE: 1" = 200'
P.C. 2971 J.N. 0980.51

B.M. SY 1235 Vol. 3, Pg. 551
1/4" T. in south edge of CONC. WALK 20' S. E. of
1/4 of Cole Rd. and 100' S. of Whittier Blvd.
ELEV. 262.66

NOTE 2
LOTS 15, 16, 17, 22, 43, 44
ALL SERVED BY P.C. 2915
LOTS 5 & 6 TO BE SERVED
BY P.C. 3015 - NO CONNECTIONS
TO HOUSES TO BE PERMITTED
ON LOTS 5 & 6 UNTIL SEWER
OUTLET COMPLETED UNDER P.C. 3026

WHITTIER BLDG. DIST. No 11

- NOTE:
Provide stakes on the property lines or property lines produced at right angles to the sewer line at the center line of each manhole.
No representative of the County Engineer will survey or layout any portion of the work. The owner or his authorized representative shall furnish the County Engineer with grade sheets and stations for all house laterals and Y branches and shall provide stakes for them at their proper locations with stationing plainly marked. Any change in location shall be requested in writing by the owner or his representative.
No revisions shall be made in these plans without the approval of the County Engineer.
1. Use standard manhole frames and covers, S-a-117.
 2. Use standard strength pipe except as noted.
 3. Use cement mortar for all vitrified clay pipe joints.
 4. Resurface all trench within paved area to meet L.A. County Road Dept. or Calif. State Highway Dept. requirements in accordance with permit.
 5. Encase four feet of sewer at points of interference with poles, S-a-119.
 6. House laterals to be constructed with inverts at property line...feet below curb grade except as noted.
 7. All structures shall be brick sewer structures, S-a-104.
 8. For allowable leakage test, use Formula No. 1, Specs., Sec. 51.

CONNECTION CHARGE
AS INDICATED
5-20-54

checked 8-3-54 M.P.

PROFILE, ALIGNMENT AND GRADE OF
SANITARY SEWERS
TO BE CONSTRUCTED IN

TRACT No 17922

PRIVATE CONTRACT NO. 2971
W. S. 34
SHEET 1 OF 2 SHEETS
Scale: VERT. 1" = 4'
HORIZ. 1" = 40' MAY, 1954
PREPARED IN THE OFFICES OF
KEMMERER ENGINEERING CO., INC.
By *Jana C. Henderson* Reg. C. E. No. 2224
FOR LEGEND SEE PLAN NO. S-a-64

P.C. 2971
J.N. 0980.51
PAGE 1
DOUBLE SCALE

(18,802)

(B)

NOTE:
Grades to which this improvement is to be constructed are shown on plans and profiles. Grade points for top of curbs, center line of streets, or center line of alleys are shown by circles on profiles. At all points between designated points the grade shall be established so as to conform to a straight line drawn between said designated points.
Elevations are in feet above U.S.G.S. datum or mean sea level.
This drawing and the data hereon are hereby made a part of the specifications.
Work shall be constructed according to specifications on file in the office of the County Engineer and shall be prosecuted only in the presence of the County Engineer.
Before work can be started, the contractor must obtain a permit to excavate in County streets from the L.A. County Road Dept., 108 W. 2nd St. and make a deposit with the County Engineer, 733 L.A. County Engineering Building, sufficient to cover the cost of construction inspection and record plans.
Approval of this plan by the County of Los Angeles does not constitute a representation as to the accuracy of the location of or the existence or non-existence of any underground utility, pipe, or structure within the limits of this project. This note applies to all sheets.
If work is to be done in a State Highway, a permit must be obtained from the State of California, Division of Highways, 120 South Spring Street.

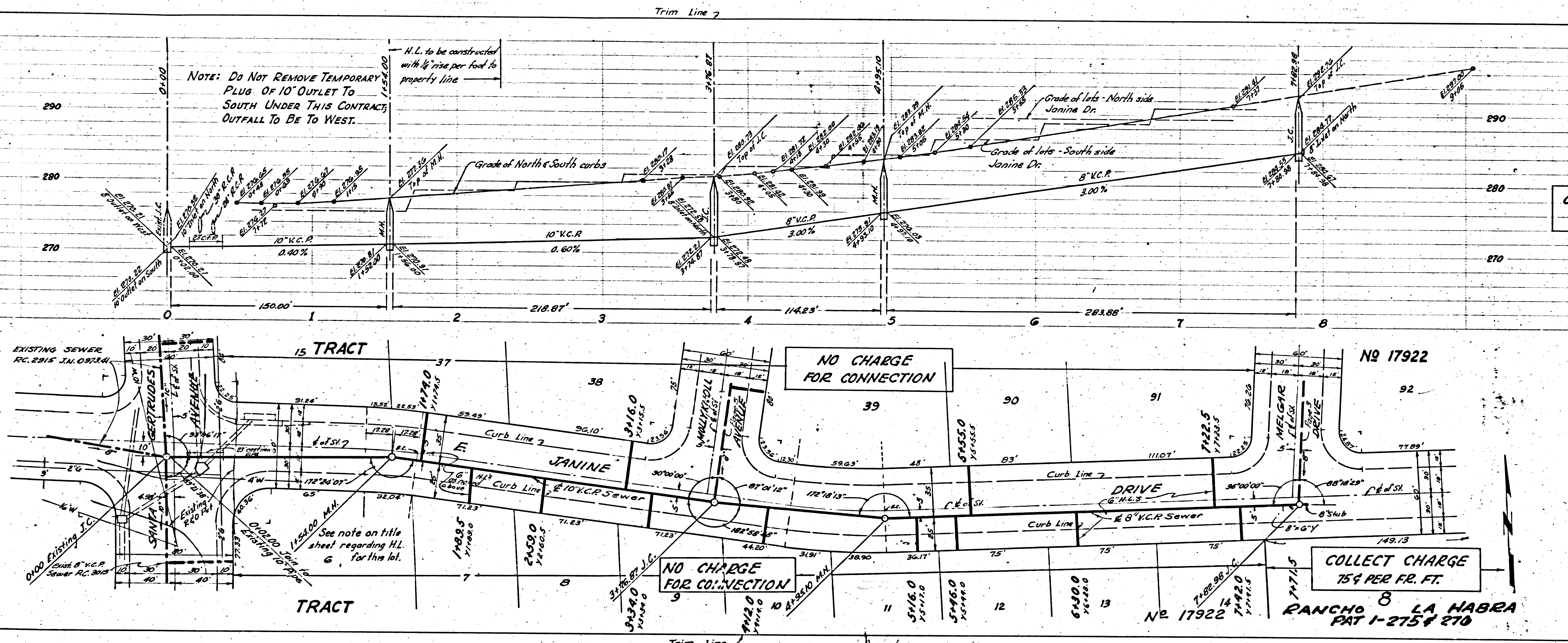
COUNTY OF LOS ANGELES, CALIFORNIA
Approved, William J. Fox, County Engineer
Approved, A. M. Rawn
CHIEF BYER. CO. SAN. DIST. NO. 11
By *George Hoffmann* Office Engineer
Checked By: *J.P. [Signature]* 8-20-54
Office of County Engineer, Reg. C. E. No. 7862

P.C. 2971
TRACT No 17922
J.N. 0980.51
17922
18-0980-21

18,804

SCALE

SECTION



NOTE: DO NOT REMOVE TEMPORARY PLUG OF 10' OUTLET TO SOUTH UNDER THIS CONTRACT. OUTFALL TO BE TO WEST.

H.L. to be constructed with 1/4" rise per foot to property line

PC. 2971
J.M. 0980.51
PAGE 2

DOUBLE SCALE

18,803

COLLECT CHARGE AS INDICATED

NO CHARGE FOR CONNECTION

NO CHARGE FOR CONNECTION

COLLECT CHARGE 75¢ PER FR. FT.

TRACT 8 LA HABRA PAT 1-2754 270

EXISTING SEWER PC. 2915 J.M. 0913.4

15 TRACT

NO 17922

TRACT

NO 17922

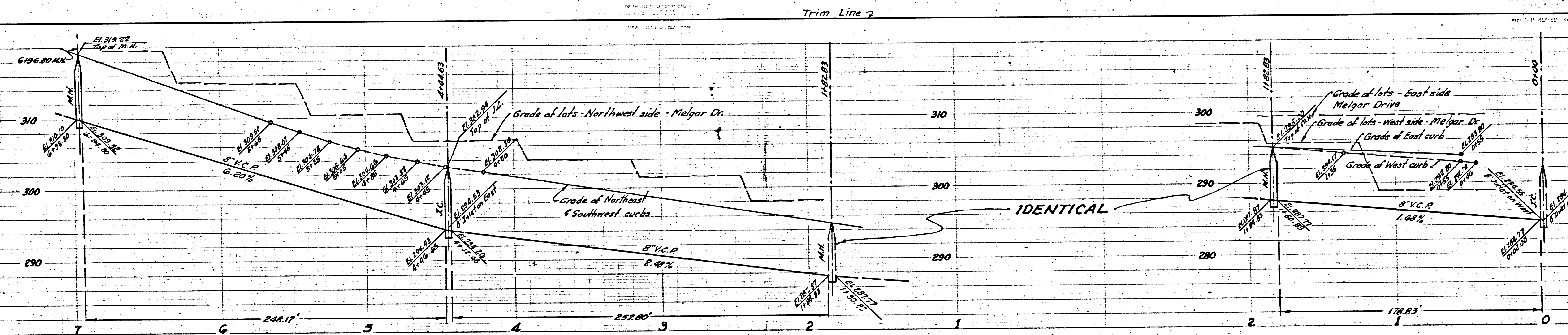
TRACT 8 LA HABRA PAT 1-2754 270

PAGE 4
R.C. 2971
J.N. 0980.51

18,805

DOUBLE SCALE

NO CHARGE
FOR CONNECTION

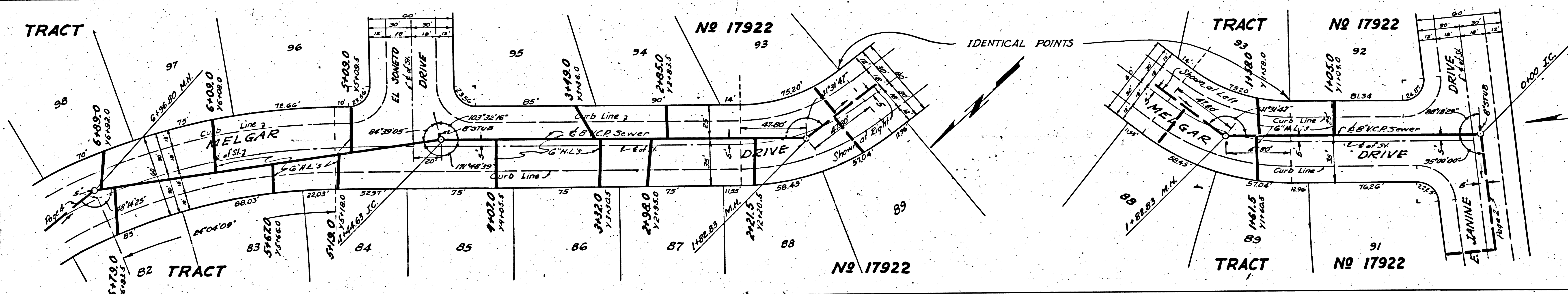


R.C. 2971
J.N. 0980.51
PAGE 3

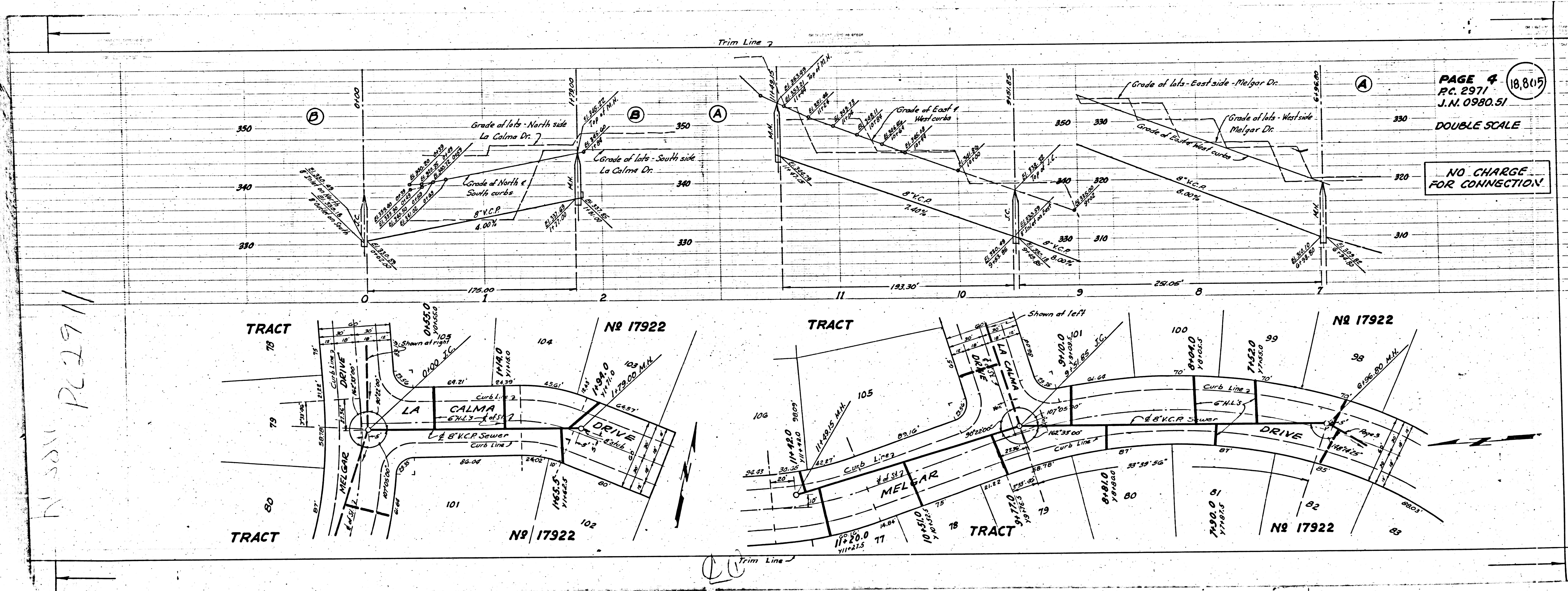
18,804

DOUBLE SCALE

NO CHARGE
FOR CONNECTION



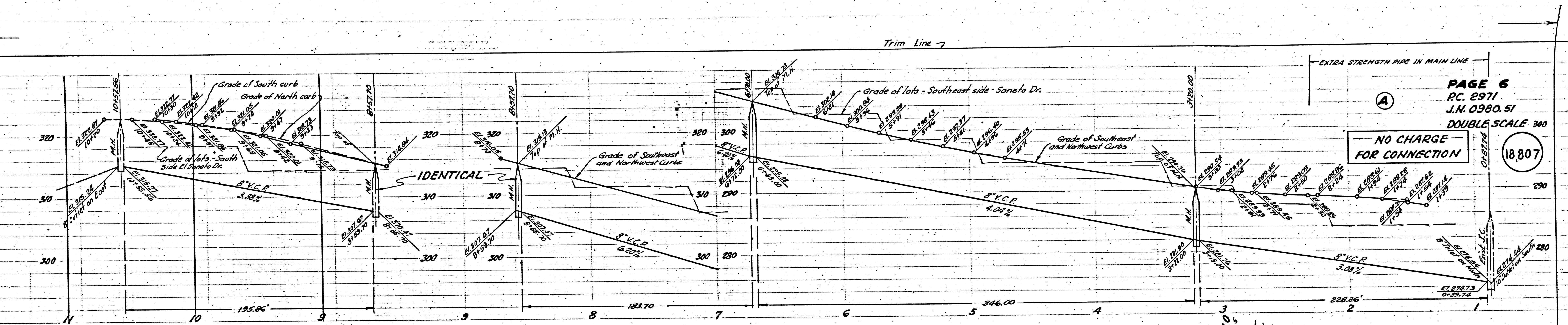
(2)



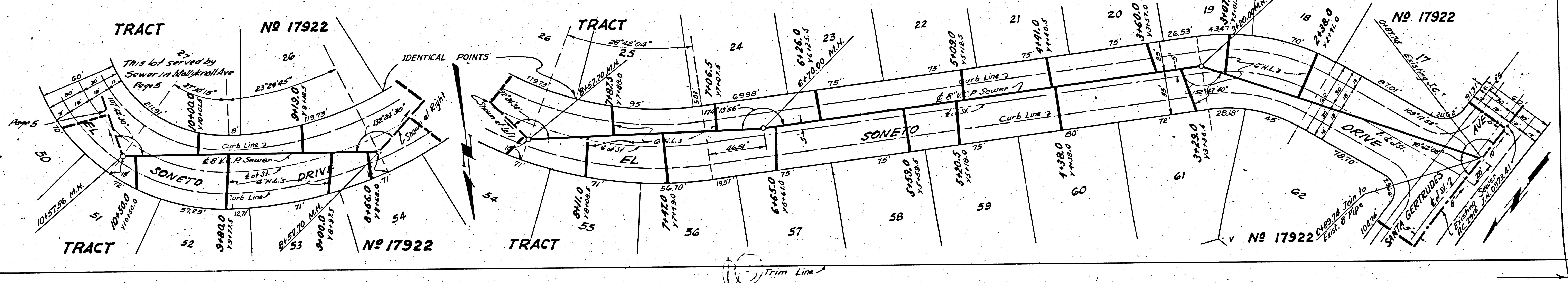
N 3211 P.C. 2971

Trim Line

J.N. 0980.51
PAGE 7
DOUBLE SCALE
18,808
COLLECT CHARGE
AS
INDICATED

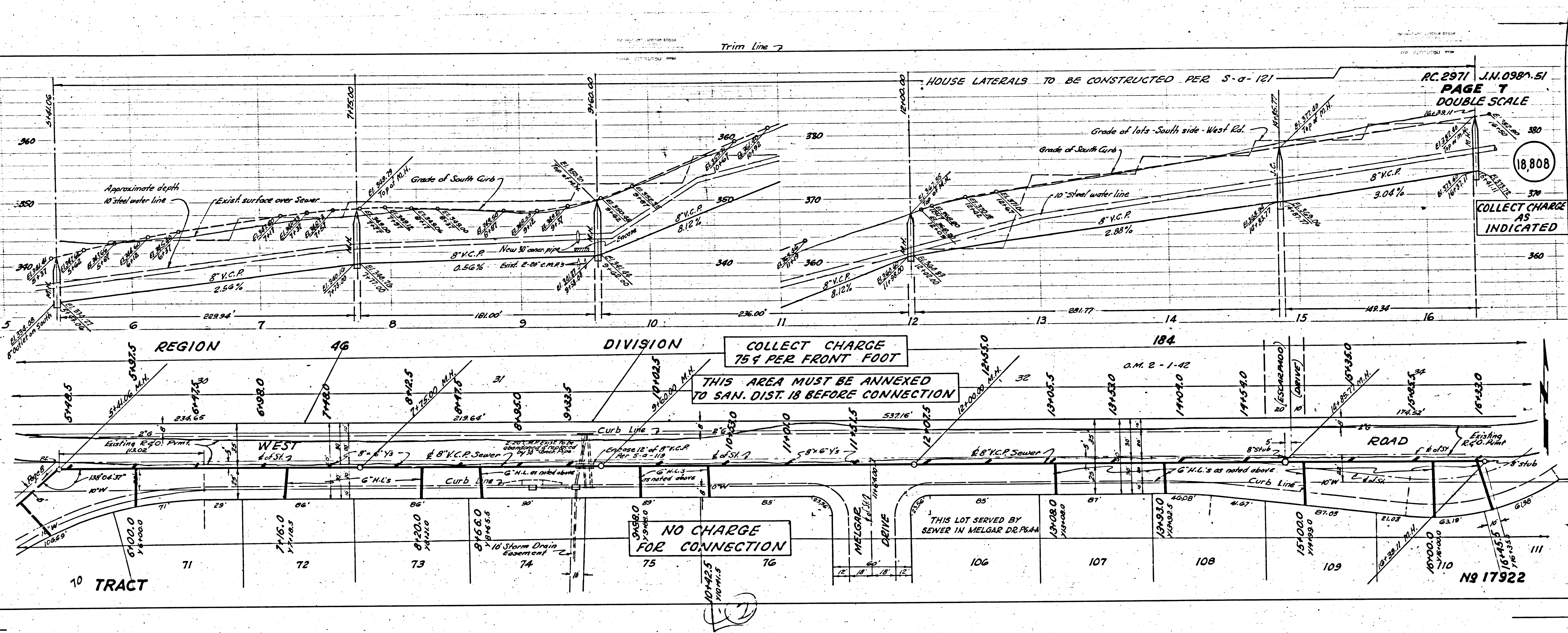


PAGE 6
R.C. 2971
J.N. 0980.51
DOUBLE SCALE 340
18,807

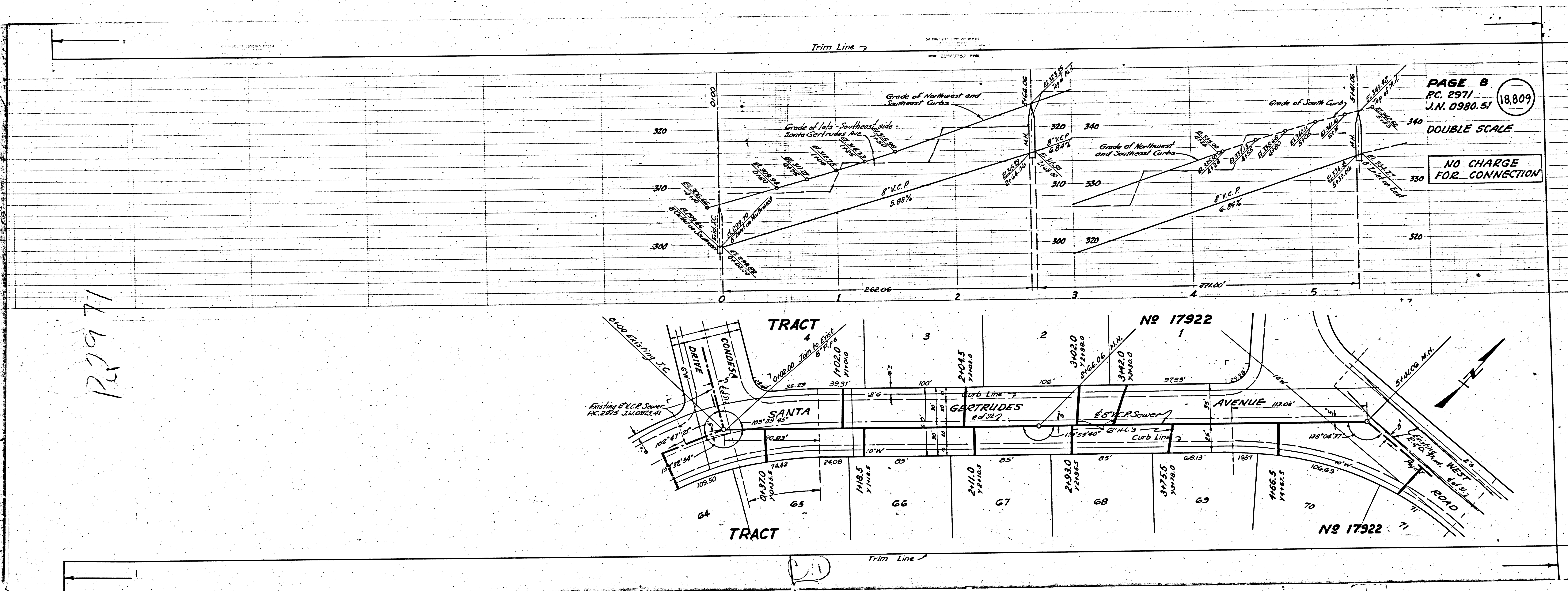


8,809

SECTION



PC 2971



PAGE 8
P.C. 2971
J.N. 0980.51 (18,809)
DOUBLE SCALE

NO CHARGE FOR CONNECTION