

**BELLFLOWER BLDG. DIST. NO. 4**  
 B.M. S.Y. 3382 ELEVATION 44.776 L.A.M.  
 S.W. COR. CONC. APRON TO BARN NO. 1/2 N.E. OF INTER-  
 SECTION OF STUDERAKER RD. & DEL ANO BLVD.

**PROFILE, ALIGNMENT, AND GRADE OF  
 SANITARY SEWER  
 TO BE CONSTRUCTED IN**

PC 2974  
 J.M. 0380.71  
 PAGE 1

**TRACT NO. 20064**

19,926

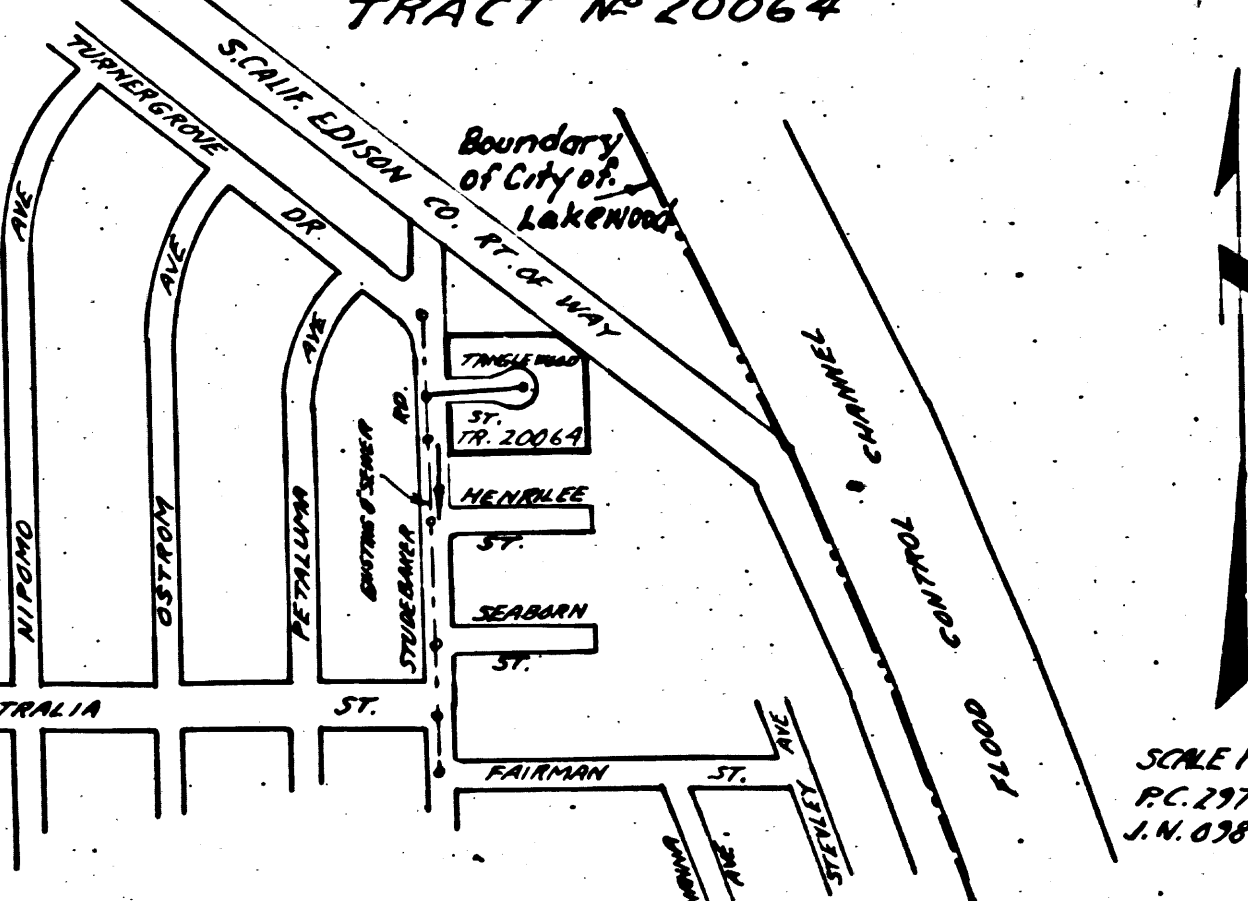
- NOTE:  
 NO REPRESENTATIVE OF THE COUNTY ENGINEER WILL SURVEY OR LAY OUT ANY PORTION OF THE WORK.  
 THE OWNER OR HIS AUTHORIZED REPRESENTATIVE SHALL FURNISH THE COUNTY ENGINEER WITH GRADE SHEETS AND STATIONS FOR ALL HOUSE LATERALS, AND Y BRANCHES AND SHALL PROVIDE STAKES FOR THEM AT THEIR PROPER LOCATIONS WITH STATIONING PLAINLY MARKED. ANY CHANGE IN LOCATION SHALL BE REQUESTED IN WRITING BY THE OWNER OR HIS REPRESENTATIVE.  
 NO REVISIONS SHALL BE MADE IN THESE PLANS WITHOUT APPROVAL OF THE COUNTY ENGINEER.
1. USE STANDARD MANHOLE FRAMES AND COVERS, S-Q-117.
  2. USE STANDARD STRENGTH PIPE.
  3. USE JOINT COMPOUND OR SMALL UNWRAPPED CLAY PIPE JOINTS PER SPECIFICATIONS SEC. 14.
  4. RESURFACE ALL TRENCH WITHIN PAVED AREA TO MEET L.A. COUNTY ROAD DEPARTMENT REQUIREMENTS.
  5. HOUSE LATERALS TO BE CONSTRUCTED WITH INVERTS AT PROPERTY LINE & SET BELOW CURB & GRADE.
  6. ALL STRUCTURES SHALL BE BRICK SEWER STRUCTURES, S-Q-109.
  7. PROVIDE STAKES ON THE PROPERTY LINE OR PROPERTY LINES PRODUCED AT RIGHT ANGLES TO THE SEWER LINE AT THE CENTER LINE OF EACH MANHOLE.
  8. FOR ALLOWABLE LEAKAGE TEST USE FORMULA NO. 2 SPEC. SEC. 51.

**PRIVATE CONTRACT NO. 2974**  
 W.S. 31  
 SHEET ONE

SCALE: VERT. 1" = 4'  
 HORIZ. 1" = 40' APRIL 1954

PREPARED IN THE OFFICE OF  
 R.V. PEARSON  
 BY *R.V. Pearson*  
 R.E. 3204  
 FOR LEGEND SEE PLAN NO. S-Q-64

**INDEX MAP  
 TRACT NO. 20064**



SHEET	PAGE

**NO CHARGE  
 FOR CONNECTION**  
*Peterson 9-14-54*

checked 3-9-55 *W. J. Fox*

CHECKED BY: *R.V. Pearson* 9-14-54  
 OFFICE OF COUNTY ENGINEER, 126 1/2 W. 7th St.

NOTE:  
 GRADES TO WHICH THIS IMPROVEMENT IS TO BE CONSTRUCTED ARE SHOWN BY PLANS AND PROFILES. GRADE POINTS FOR THE CENTER LINE OF STREETS ARE SHOWN BY CIRCLES ON PROFILES. AT ALL POINTS BETWEEN DESIGNATED POINTS THE GRADE SHALL BE ESTABLISHED SO AS TO CONFORM TO A STRAIGHT LINE DRAWN BETWEEN SAID DESIGNATED POINTS.  
 ELEVATIONS ARE IN FEET ABOVE U.S.C.S. DATUM OF MEAN SEA LEVEL.  
 THIS DRAWING AND THE DATA HEREON ARE HEREBY MADE A PART OF THE SPECIFICATIONS. THE WORK SHALL BE CONSTRUCTED ACCORDING TO SPECIFICATIONS ON FILE IN THE OFFICE OF THE COUNTY ENGINEER AND SHALL BE PROSECUTED ONLY IN THE PRESENCE OF THE COUNTY ENGINEER. BEFORE WORK CAN BE STARTED, THE CONTRACTOR MUST OBTAIN A PERMIT TO EXCAVATE IN COUNTY STREETS FROM THE L.A. COUNTY ROAD DEPT., 108 W. 2nd ST. AND MAKE A DEPOSIT WITH THE COUNTY ENGINEER, 133 L.A. COUNTY ENGINEERING BUILDING, SUFFICIENT TO COVER THE COST OF CONSTRUCTION INSPECTION AND RECORD PLANS.  
 APPROVAL OF THIS PLAN BY THE COUNTY OF LOS ANGELES DOES NOT CONSTITUTE A REPRESENTATION AS TO THE ACCURACY OF THE LOCATION OR OF THE EXISTENCE OR NON-EXISTENCE OF ANY UNDERGROUND UTILITY, PIPE, OR STRUCTURE WITHIN THE LIMITS OF THIS PROJECT.

**COUNTY OF LOS ANGELES, CALIFORNIA**

APPROVED, WILLIAM J. FOX, COUNTY ENGINEER  
 BY *W. J. Fox*  
 SANITATION ENGINEER

APPROVED, A.M. RAWIN  
 CHIEF ENGR. CO. SAN. DIST. NO. 3  
 BY *A.M. Rawin*  
 OFFICE ENGINEER

TRACT #20064

PC 2974

10880 W. 15855 S. 10

PC 2974