

Page 2
P.C. 2983
J.N. 110002

NO CHARGE FOR CONNECTIONS

19,604

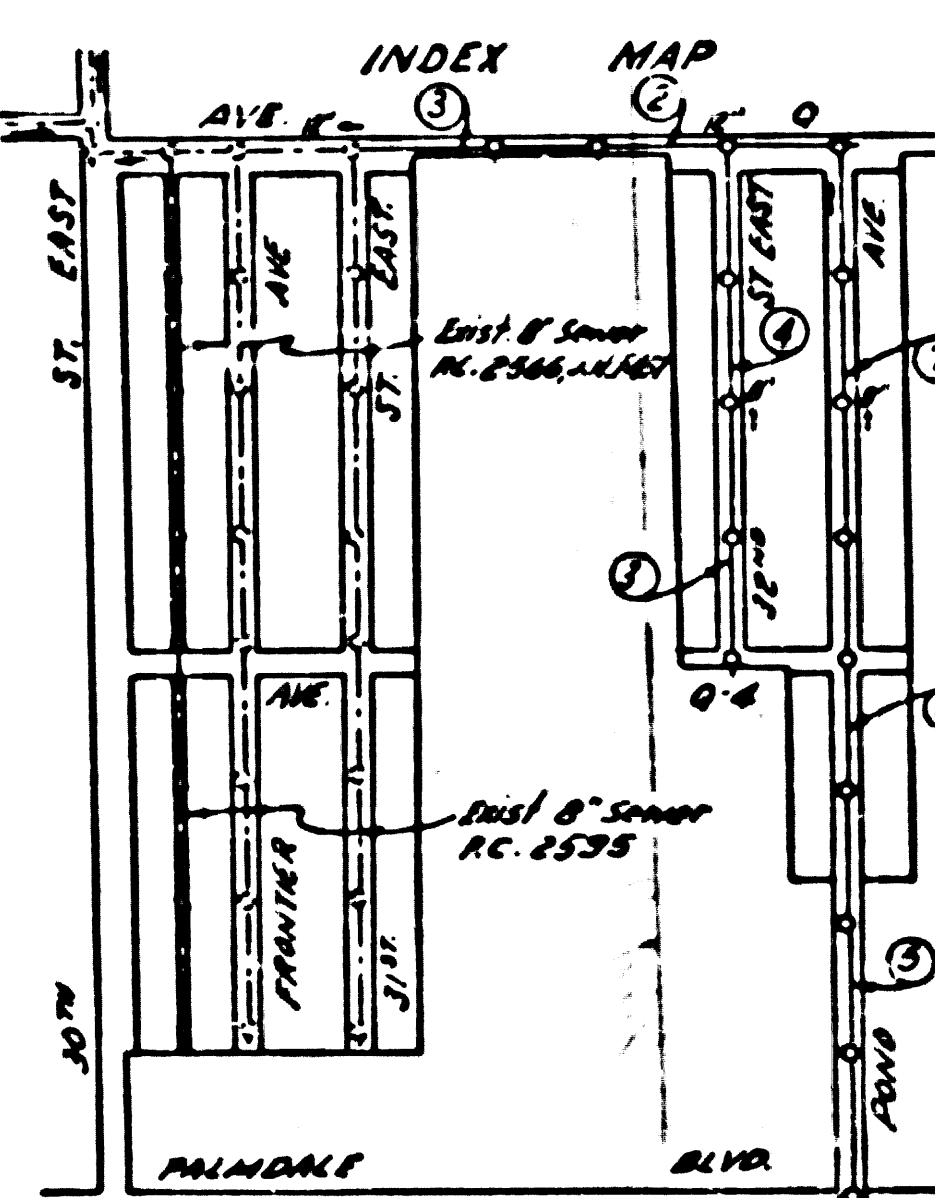
B.M. U.S. 2160 El. 2599.161 35'11" E. of Palmdale Blvd
2.9 miles E. of Palmdale 30' N. of Hwy. Top of Conc.
Mark a bronze disk stamped L.S. 26-1929

SHEET	PAGES
1	1-4
2	5-7

Checked 1-17-55 M.L. Green

PALMDALE BLDG DIST. N° 8P

- NOTE: Provide stakes on the property lines or property lines produced at right angles to the sewer line at the center line of each manhole.
- The owner or his authorized representative shall survey or layout any portion of the work. The owner or his authorized representative shall furnish the County Engineer with grade sheets and stations for all house laterals and Y branches and shall provide stakes for them at their proper locations with stationing plainly marked. Any change in location shall be requested in writing by the owner or his representative.
- No revisions shall be made in these plans without the approval of the County Engineer.
1. Use standard manhole frames and covers, S-a-117.
 2. Use standard strength pipe except as noted.
 3. Use cement mortar for all vitrified clay pipe joints.
 4. Resurface all trench within paved area to meet L.A. County Road Dept. or Calif. State Highway Dept. requirements in accordance with permit.
 5. Encase four feet of sewer at points of interference with poles, S-a-119.
 6. House laterals to be constructed with inverts at property line.....feet below curb grade except as noted.
 7. All structures shall be brick sewer structures, S-a-104.
 8. Manhole tops in unimproved Rights-Of-Way to be 6" above finish grade.
 9. For allowable leakage test, use Formula No..... Specs., Sec. 51.
- 10. BALL ALL PIPE JOINTS WITH 4" CEMENT MORTAR THAT ARE WITHIN 20 FEET OF ALL PROPERTY LINES.**



TRACT N° 19965
P.C. 2983 J.N. 098171

NO CHARGE FOR CONNECTIONS

PROFILE, ALIGNMENT AND GRADE OF SANITARY SEWERS TO BE CONSTRUCTED IN TRACT N° 19965

PRIVATE CONTRACT NO. 2983
W.S. 65
SHEET 1 OF 2 SHEETS
7 PAGES
Scale: VERT. 1"=4' HORIZ. 1"=40' MARCH 1954

PREPARED IN THE OFFICE OF
[Signature]
FOR LEGEND SEE PLAN NO. S-a-64

NOTE: Grades to which this improvement is to be constructed are shown on plans and profiles. Grade points for top of curbs, center line of streets, or center line of alleys are shown by circles on profiles. At all points between designated points the grade shall be established so as to conform to a straight line drawn between said designated points.

Elevations are in feet above U.S.G.S. datum or mean sea level.

This drawing and the data hereon are hereby made a part of the specifications. Work shall be constructed according to specifications on file in the office of the County Engineer and shall be prosecuted only in the presence of the County Engineer.

Before work can be started, the contractor must obtain a permit to excavate in County streets from the L.A. County Road Dept., 108 W. 2nd St. and make a deposit with the County Engineer, 733 L.A. County Engineering Building, sufficient to cover the cost of construction inspection and record plans.

Approval of this plan by the County of Los Angeles does not constitute a representation as to the accuracy of the location of or the existence or non-existence of any underground utility, pipe, or structure within the limits of this project. This note applies to all sheets.

If work is to be done in a State Highway, a permit must be obtained from the State of California, Division of Highways, 120 South Spring Street.

COUNTY OF LOS ANGELES, CALIFORNIA

Approved, William J. Fox, County Engineer
Approved, A. M. Rowen
Sanitarian Engineer
Checked by *[Signature]* 7-8-54
Office of County Engineer, Dep. C. E. No. 7560

Page 1
P.C. 2983
J.N. 110002

19,603

P.C. 2983-TRACT N° 19965

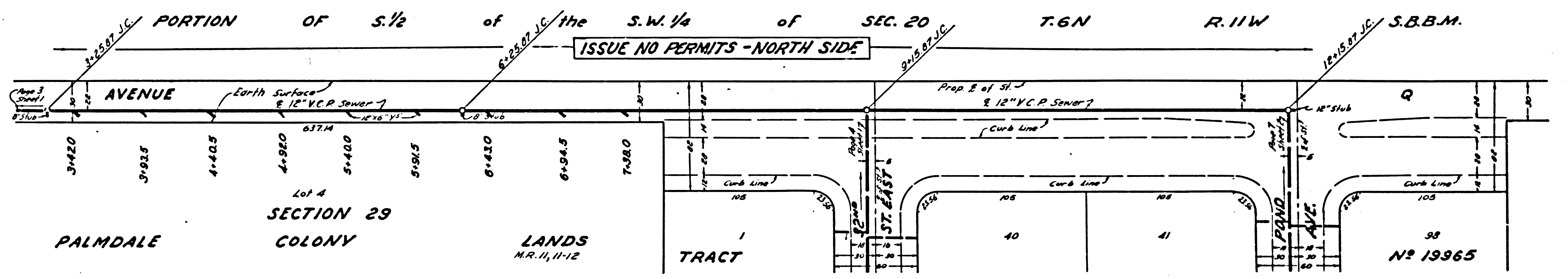
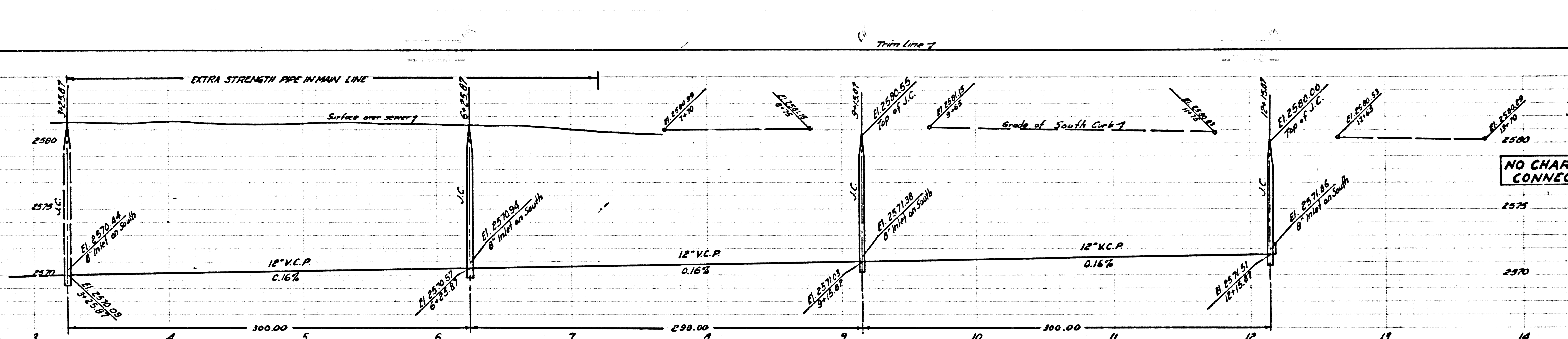
8/22

NO CHARGE FOR CONNECTIONS

19,605

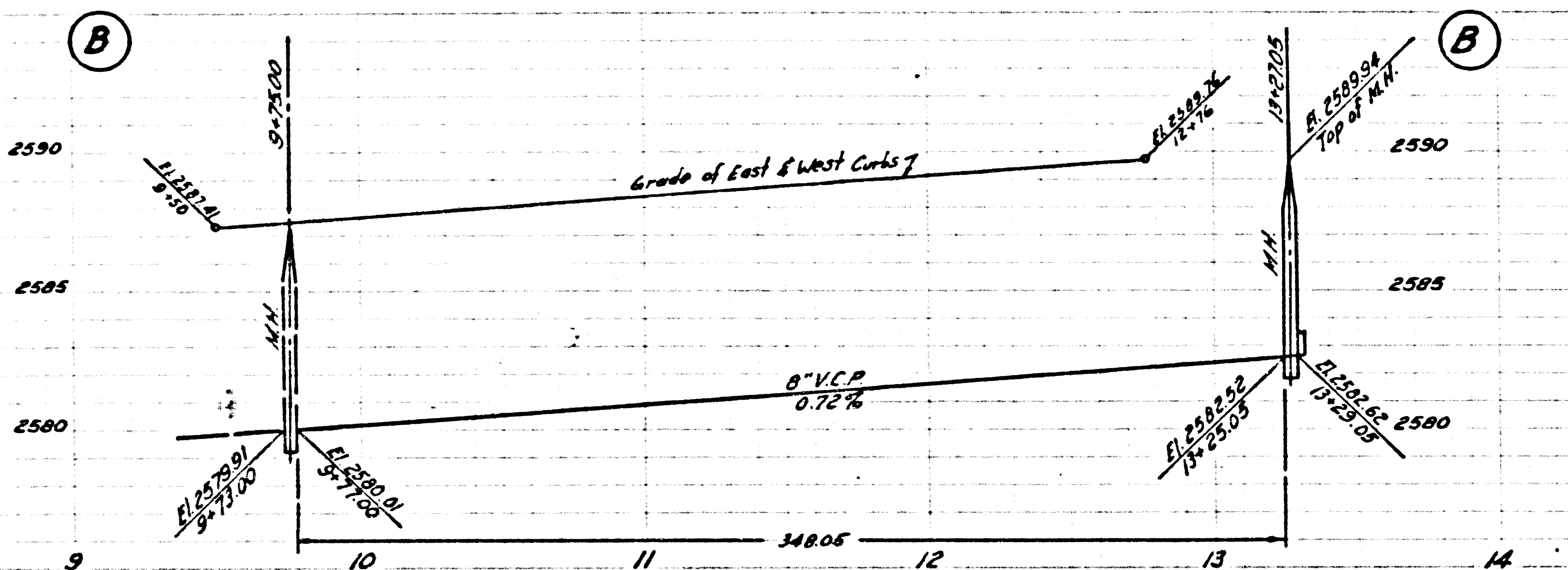
NO CHARGE FOR CONNECTIONS

19,604



NO CHARGE FOR CONNECTIONS

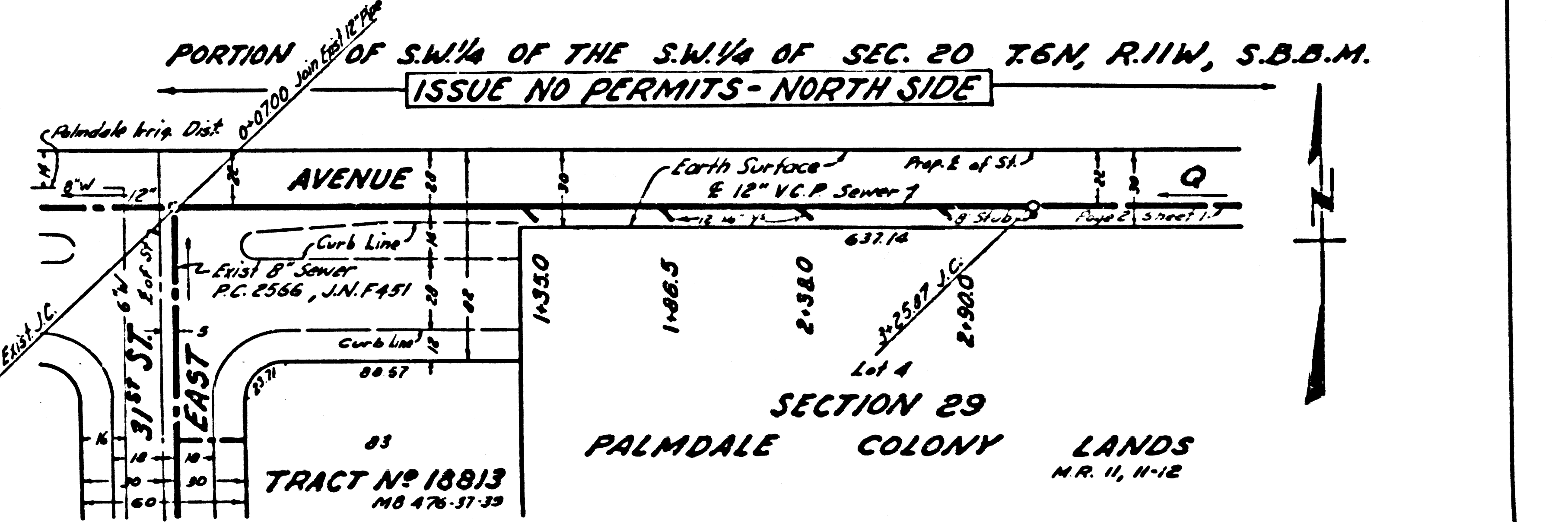
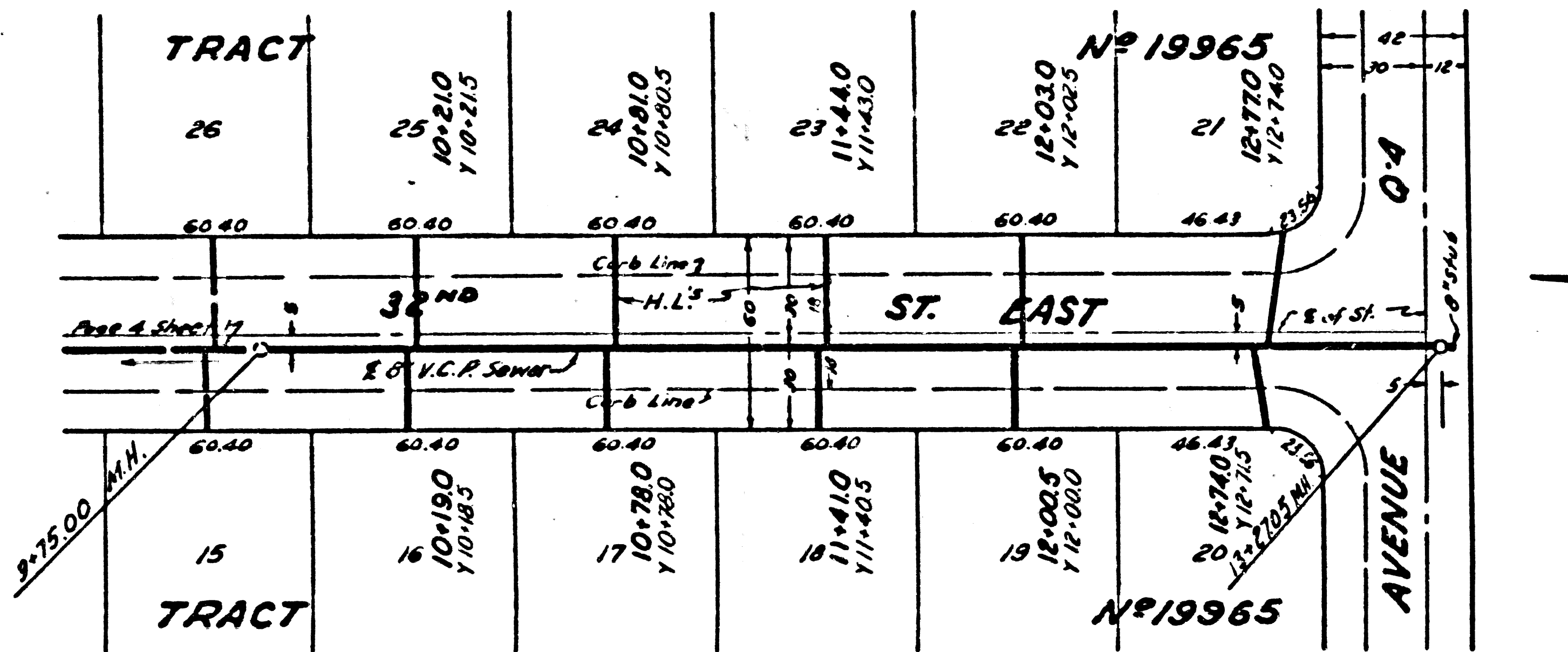
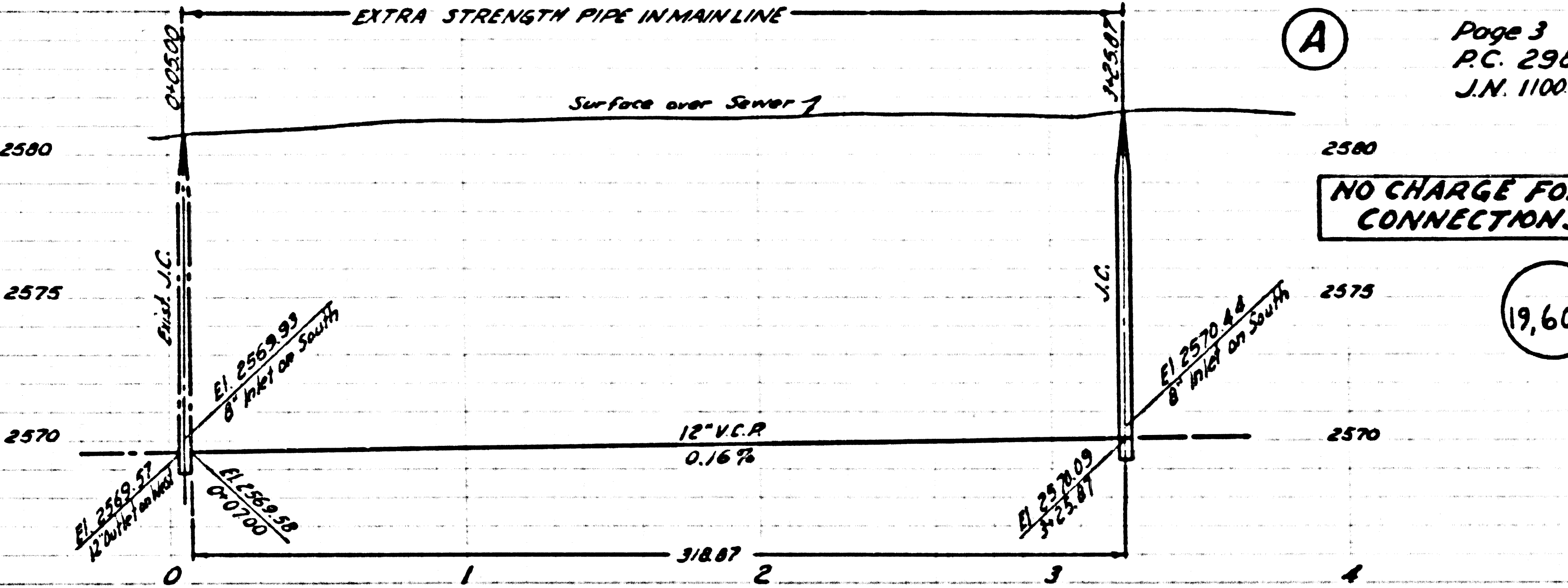
19,606



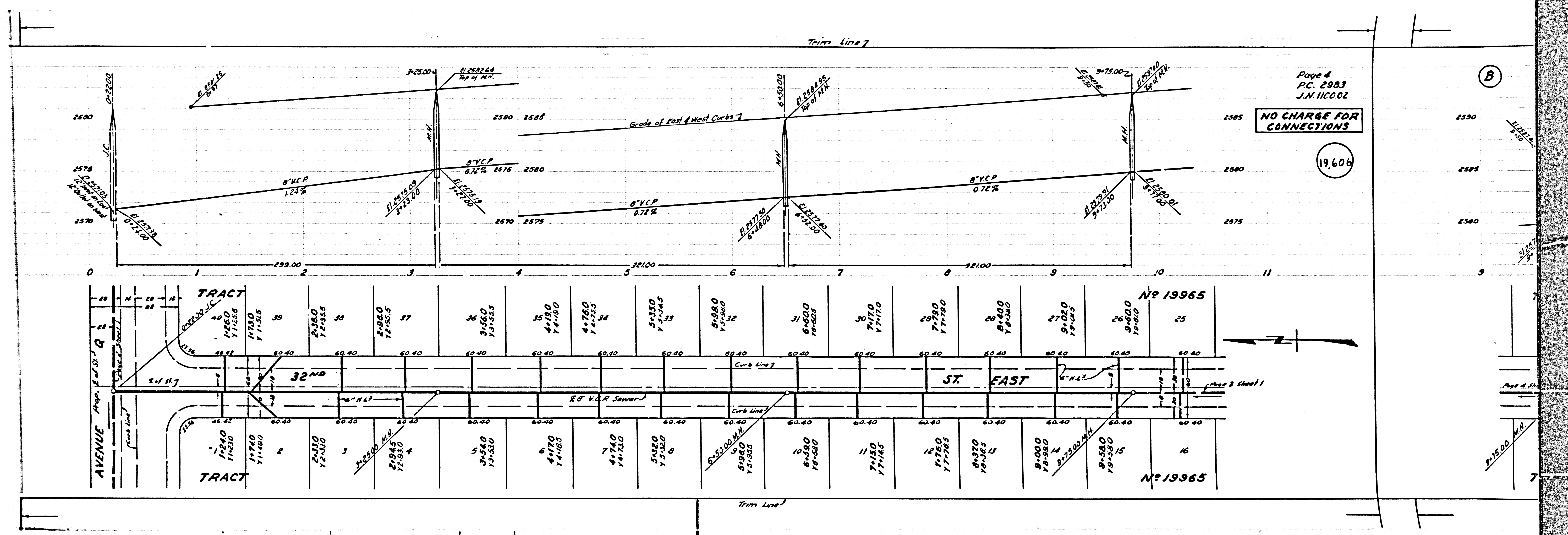
Trim Line

NO CHARGE FOR CONNECTIONS

19,605



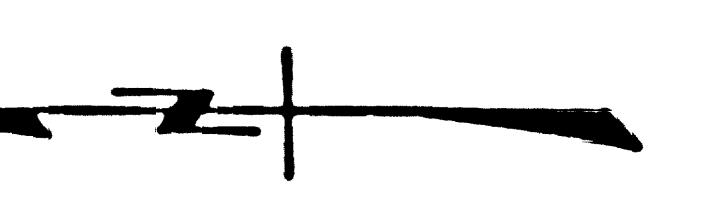
Trim Line



Page 4
 P.C. 2983
 J.N. 1100.02
 NO CHARGE FOR CONNECTIONS
 19606

(B)

28	27	26	25	24	23	22	21	20	19	18	17	16	15	14	13	12	11	10	9	8	7	6	5	4	3	2	1
TRACT																											
40	39	38	37	36	35	34	33	32	31	30	29	28	27	26	25												
1-240 Y1-230	1-740 Y1-730	2-360 Y2-350	2-960 Y2-950	3-560 Y3-550	4-160 Y4-150	4-760 Y4-750	5-360 Y5-350	5-960 Y5-950	6-560 Y6-550	7-160 Y7-150	7-760 Y7-750	8-360 Y8-350	8-960 Y8-950	9-560 Y9-550	9-160 Y9-150												
TRACT																											
40	39	38	37	36	35	34	33	32	31	30	29	28	27	26	25												
1-240 Y1-230	1-740 Y1-730	2-360 Y2-350	2-960 Y2-950	3-560 Y3-550	4-160 Y4-150	4-760 Y4-750	5-360 Y5-350	5-960 Y5-950	6-560 Y6-550	7-160 Y7-150	7-760 Y7-750	8-360 Y8-350	8-960 Y8-950	9-560 Y9-550	9-160 Y9-150												
TRACT																											



(B)

Page 6
P.C. 2983
J.N. 110002

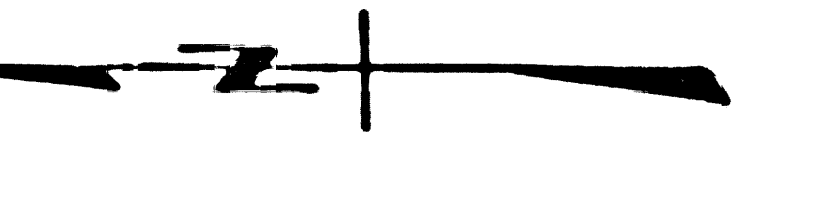
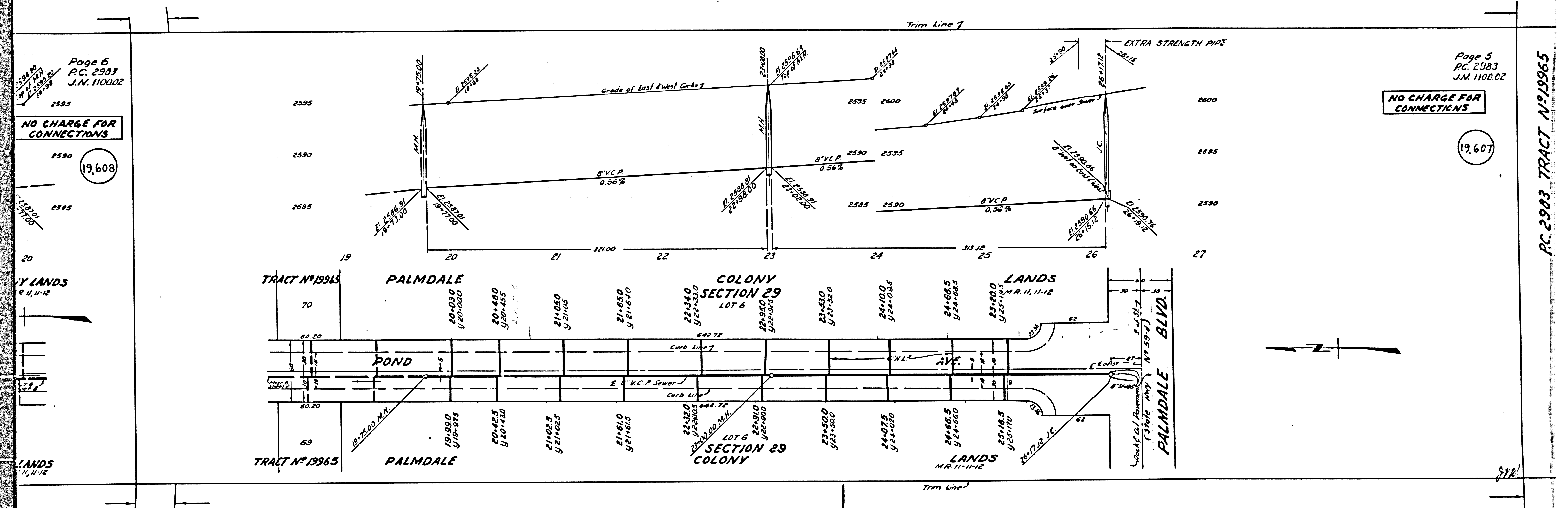
NO CHARGE FOR CONNECTIONS

19,608

Page 5
P.C. 2983
J.N. 110002

NO CHARGE FOR CONNECTIONS

19,607



872'

LANDS
R. 11, 11-12

LANDS
R. 11, 11-12

TRACT # 19965

TRACT # 19965

PALMDALE

PALMDALE

COLONY
SECTION 29
LOT 6

COLONY
SECTION 29
LOT 6

LANDS
R. 11, 11-12

LANDS
R. 11, 11-12

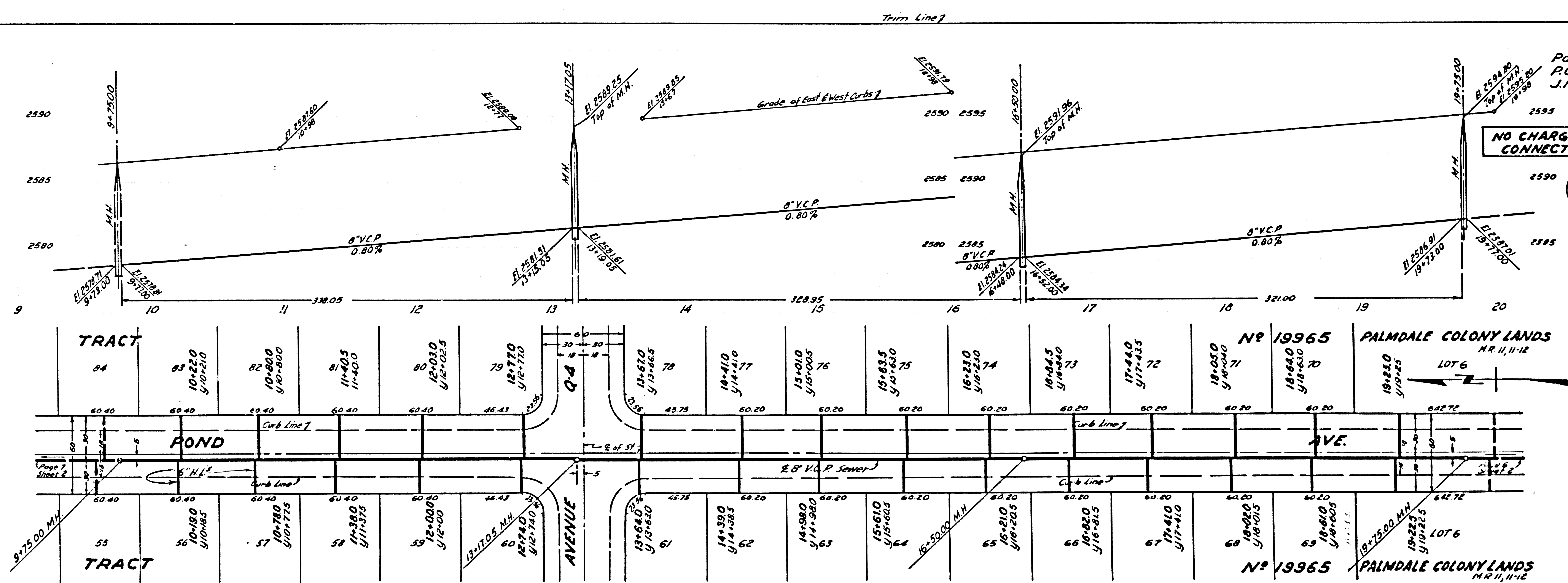
PALMDALE BLVD.
(State Hwy 141.59-d)

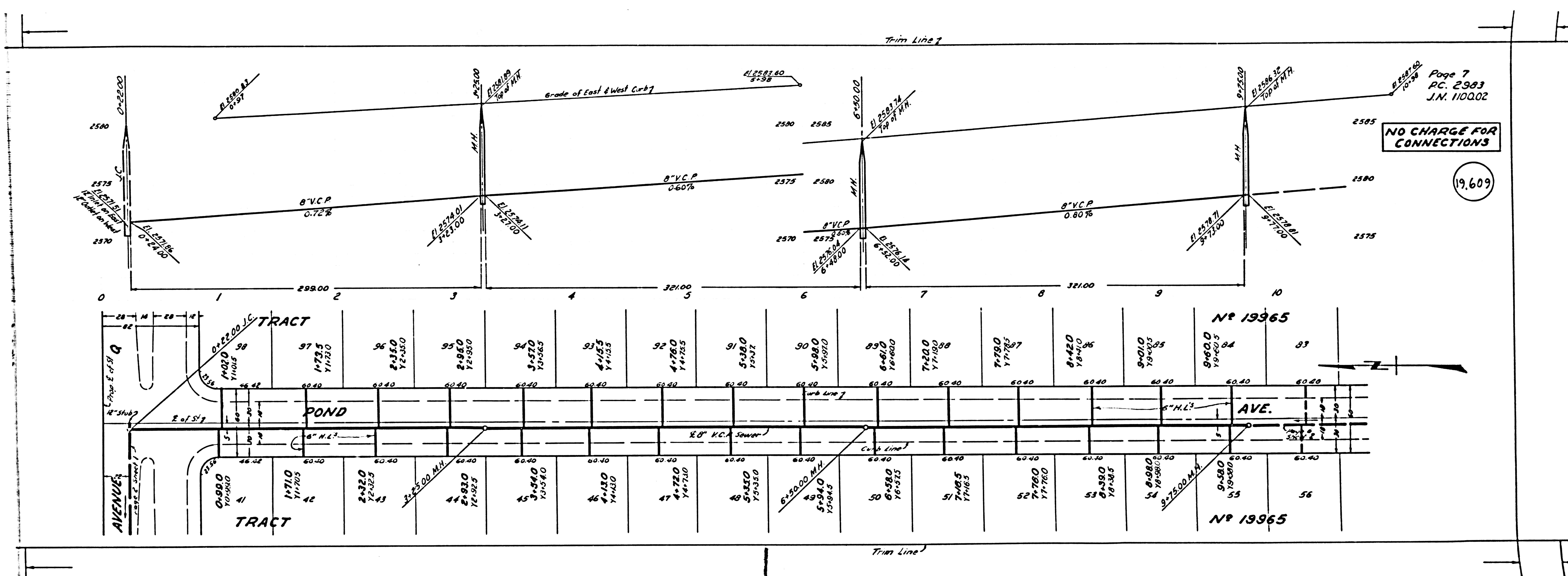
NO CHARGE FOR CONNECTIONS

NO CHARGE FOR CONNECTIONS

19,609

19,608





Page 7
 PC. 2983
 J.N. 110002

NO CHARGE FOR CONNECTIONS

1969

0	1	2	3	4	5	6	7	8	9	10
0-2200	1-2300	2-2400	3-2500	4-2600	5-2700	6-2800	7-2900	8-3000	9-3100	10-3200
0-2200	1-2300	2-2400	3-2500	4-2600	5-2700	6-2800	7-2900	8-3000	9-3100	10-3200
0-2200	1-2300	2-2400	3-2500	4-2600	5-2700	6-2800	7-2900	8-3000	9-3100	10-3200

