

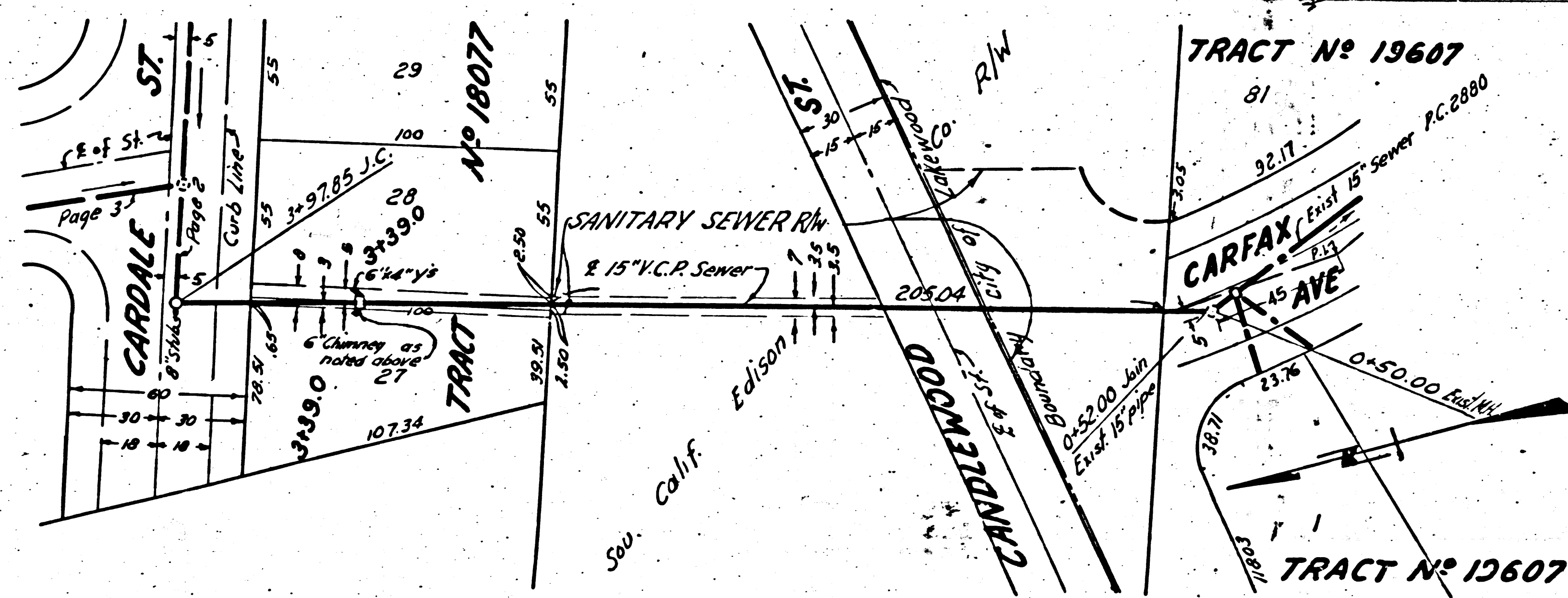
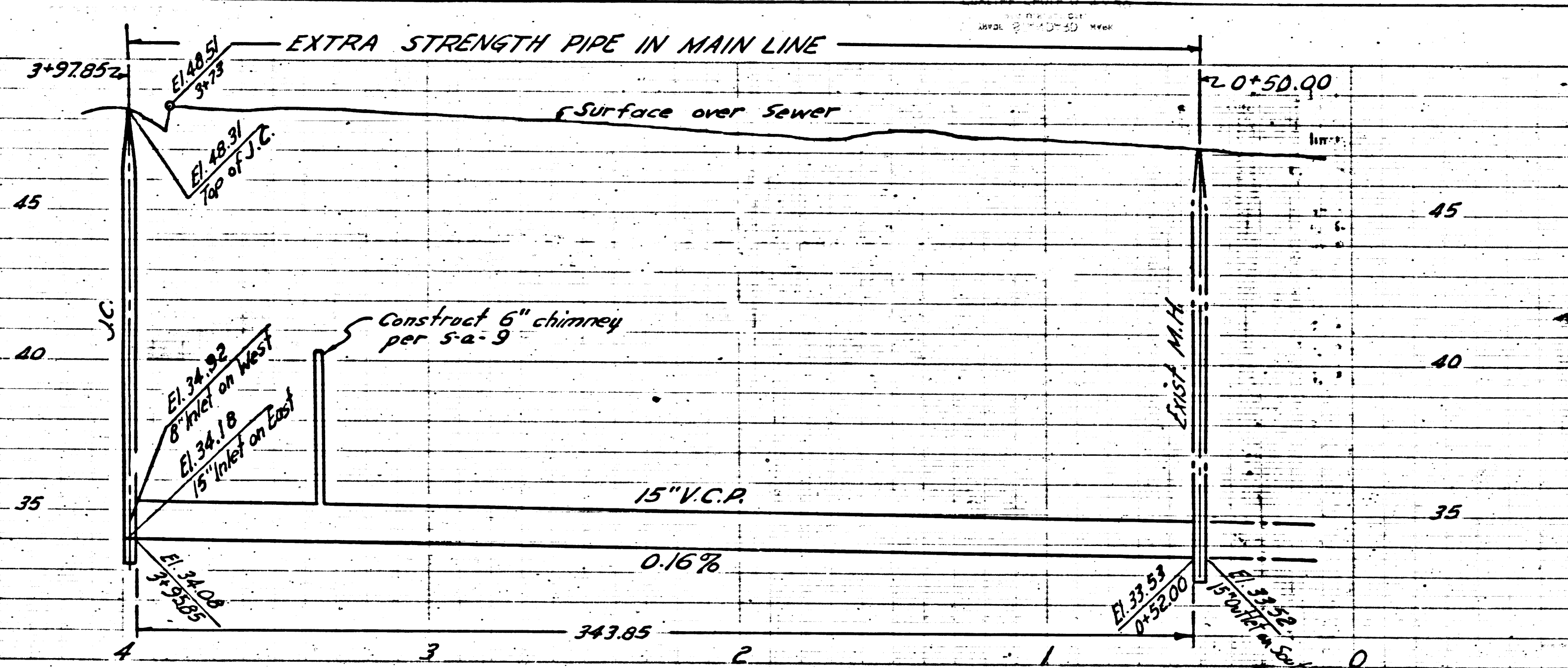
Page 2
P.C. 2985
J.N. 0981.91

NO CHARGE FOR CONNECTIONS

18,888

Ground Surface
El. 45.2

Water Level
El. 45.2
4-29-54



Trim Line 1

BELLFLOWER BLDG DIST. N° 4

- NOTE:
Provide stakes on the property lines or property lines produced at right angles to the sewer line at the center line of each manhole.
No representative of the County Engineer will survey or layout any portion of the work.
The owner or his authorized representative shall furnish the County Engineer with grade sheets and stations for all house laterals and branches and shall provide stakes for them at their proper locations with stationing plainly marked. Any change in location shall be requested in writing by the owner or his representative.
No revisions shall be made in these plans without the approval of the County Engineer.
1. Use standard manhole frames and covers, S-a-117.
 2. Use standard strength pipe except as noted.
 3. Use joint compound "A-a-8" for all vitrified clay pipe joints per Spec. S-a-31.
 4. Resurface all trench within paved area to meet L.A. County Road Dept. or California State Highway Dept. requirements in accordance with permit.
 5. Encase four feet of sewer at points of interference with poles, S-a-119.
 6. House laterals to be constructed with inverts at property line 5 feet below curb grade except as noted.
 7. All structures shall be brick sewer structures, S-a-104.
 8. For allowable leakage test, use Formula No. 2, Spec's., Sec. 61.

PROFILE, ALIGNMENT AND GRADE OF
SANITARY SEWERS
TO BE CONSTRUCTED IN
TRACT N° 18077

Page 1
P.C. 2985
J.N. 0981.91

18,887

PRIVATE CONTRACT NO. 2985
W. S. 31
2 SHEETS

Scale: VERT. 1"=4'
HORIZ. 1"=40'

MAY 1954

PREPARED IN THE OFFICES OF
BARCLAY SURVEYING COMPANY

W. S. 31
Reg. C.E. No. 1137

FOR LEGEND SEE PLAN NO. S-a-64

NOTE:
Grades to which this improvement is to be constructed are shown on plans and profiles. Grade points for top of curbs, center line of streets, or center line of alleys are shown by circles on profiles. At all points between designated points the grade shall be established so as to conform to a straight line drawn between said designated points.
Elevations are in feet above U.S.G.S. datum or mean sea level.
This drawing and the data hereon are hereby made a part of the specifications.
Work shall be constructed according to specifications on file in the office of the County Engineer and shall be prosecuted only in the presence of the County Engineer.
Before work can be started, the contractor must obtain a permit to excavate in County streets from the L.A. County Road Dept., 108 W. 2nd St. and make a deposit with the County Engineer, 733 L.A. County Engineering Building, sufficient to cover the cost of construction inspection and record plans.
Approval of this plan by the County of Los Angeles does not constitute a representation as to the accuracy of the location of or the existence or non-existence of any underground utility, pipe, or structure within the limits of this project. This note applies to all sheets.
If work is to be done in a State Highway, a permit must be obtained from the State of California, Division of Highways, 120 South Spring Street.

COUNTY OF LOS ANGELES, CALIFORNIA

Approved, William J. Fox, County Engineer
Approved, A. M. Ream
CHIEF ENGR. CO. SAN DIST. NO. 3
A. P. Collins
Sanitation Engineer
Checked by: G. A. Hughes
Office of County Engineer, Reg. E. No. 5837

SHEETS	PAGES
1	1-4
2	5-7

INDEX MAP
TRACT N° 18077
P.C. 2985 J.N. 0981.91

NO CHARGE FOR CONNECTIONS

Checked 5-30-54 W. J. Fox

Trim Line 2

18,888

18,887

18,887

18,887

18,887

18,887

18,887

18,887

18,887

Page 4
P.C. 2985
J.N. 0981.91

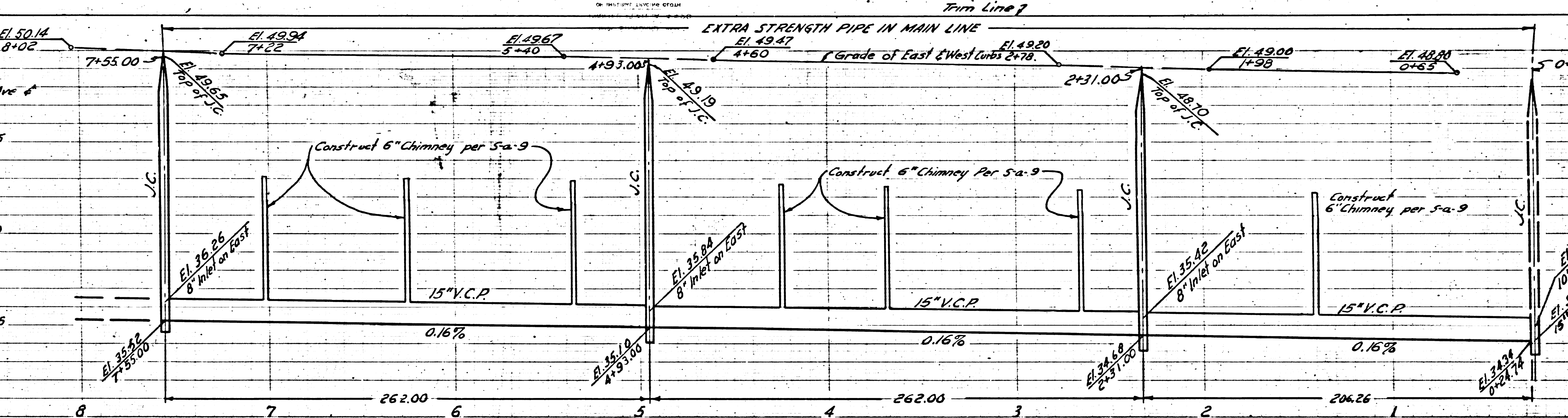
NO CHARGE FOR CONNECTIONS

18,890

TEST BORING
2 Intersection of Carfax Ave & Michigan St

Ground Surface
El. 31.4

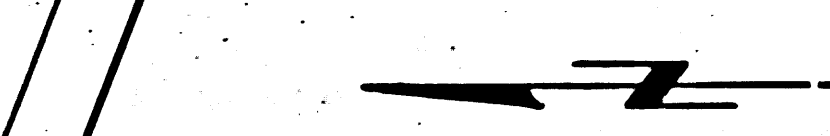
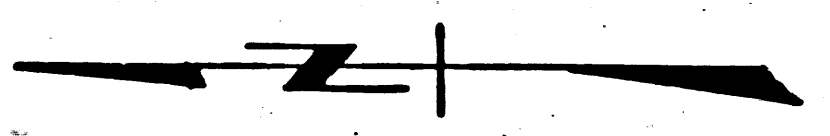
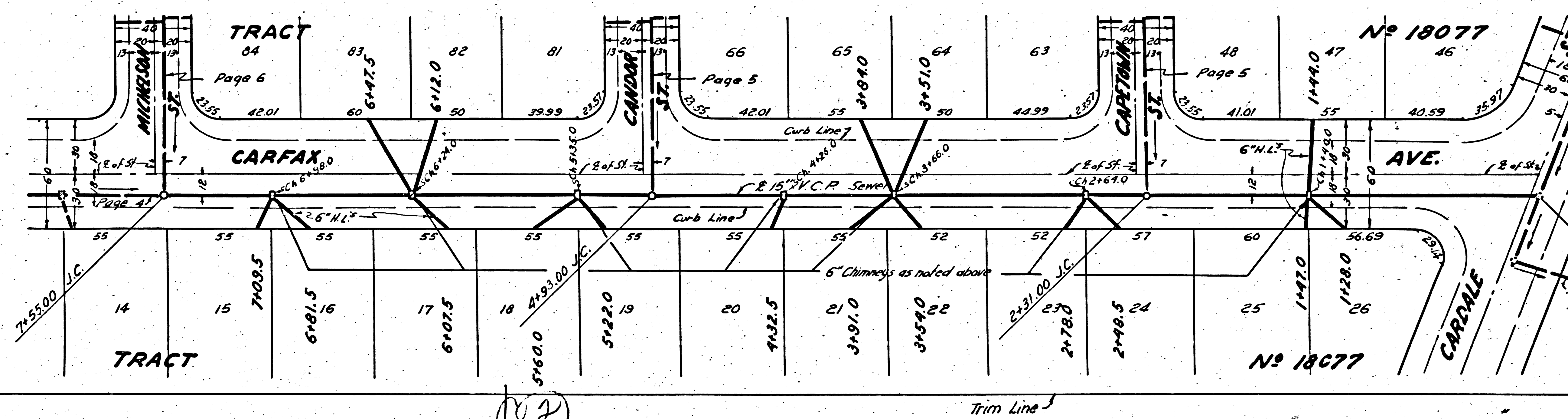
Water level
El. 42.8
April 28, 1954



Page 3
P.C. 2985
J.N. 0981.91

NO CHARGE FOR CONNECTIONS

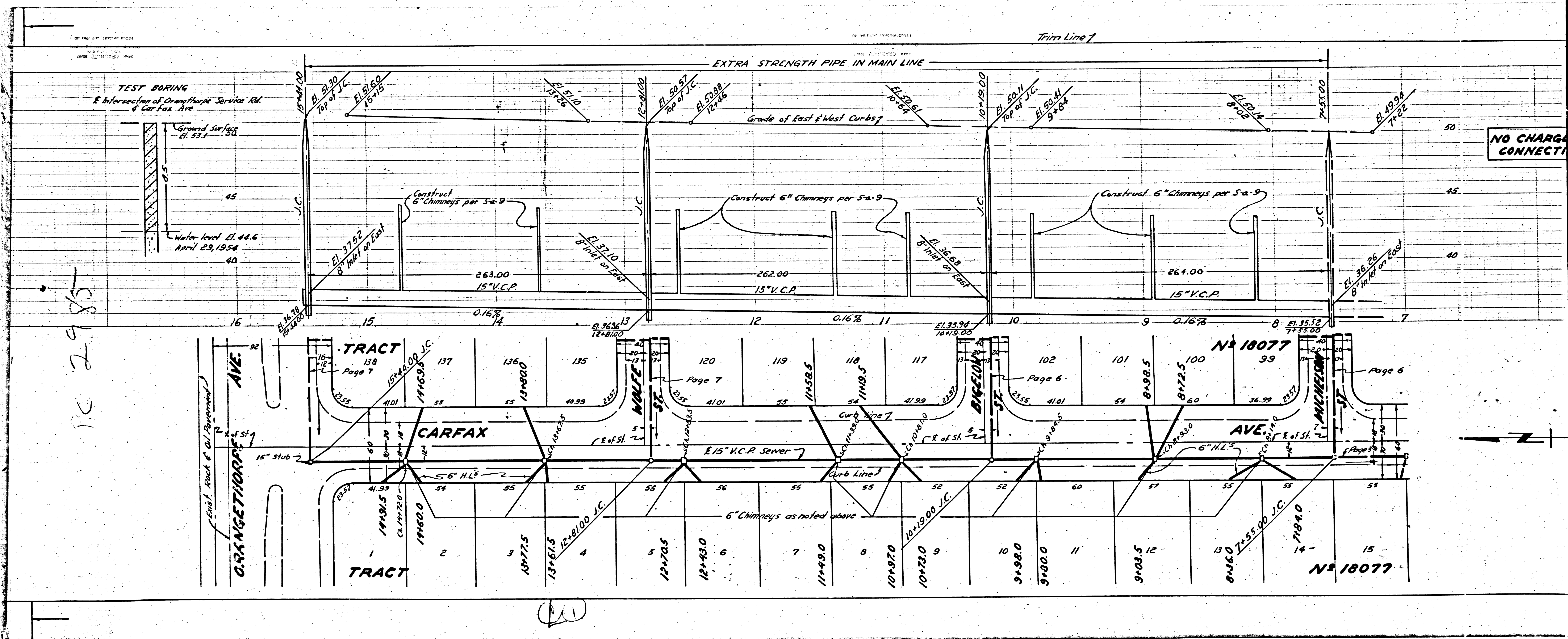
18,889



18077

18077

2



10 2985

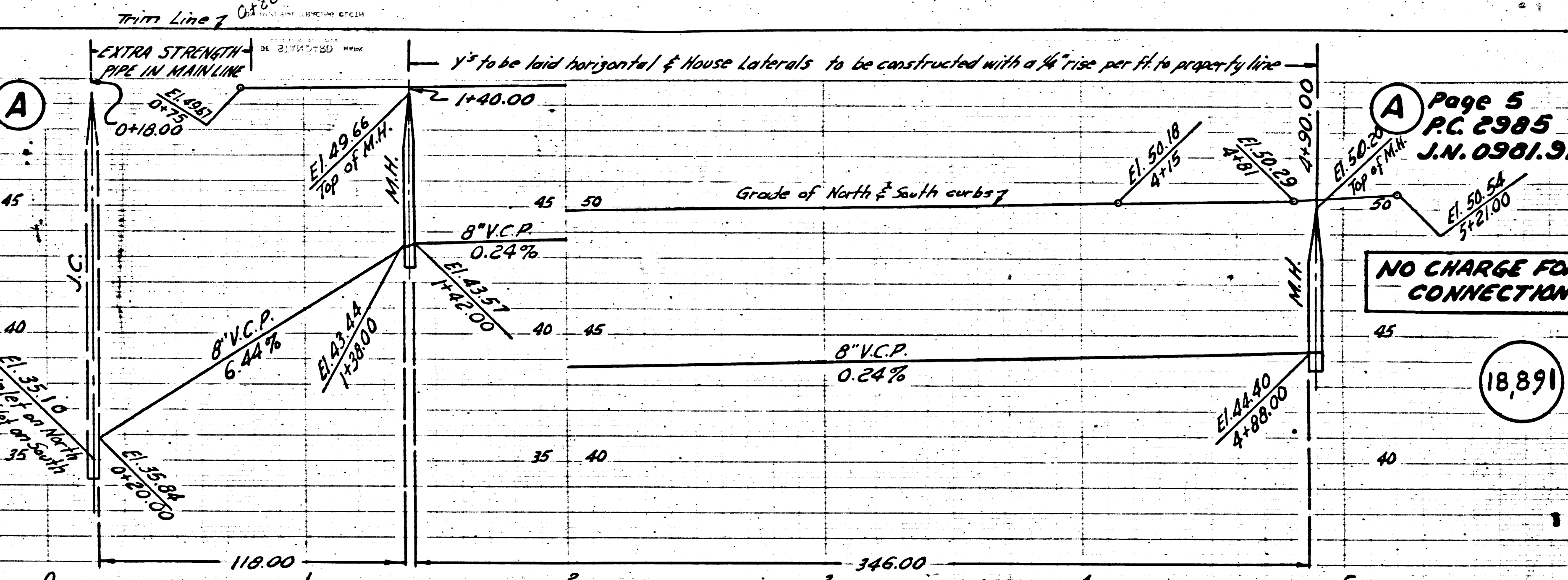
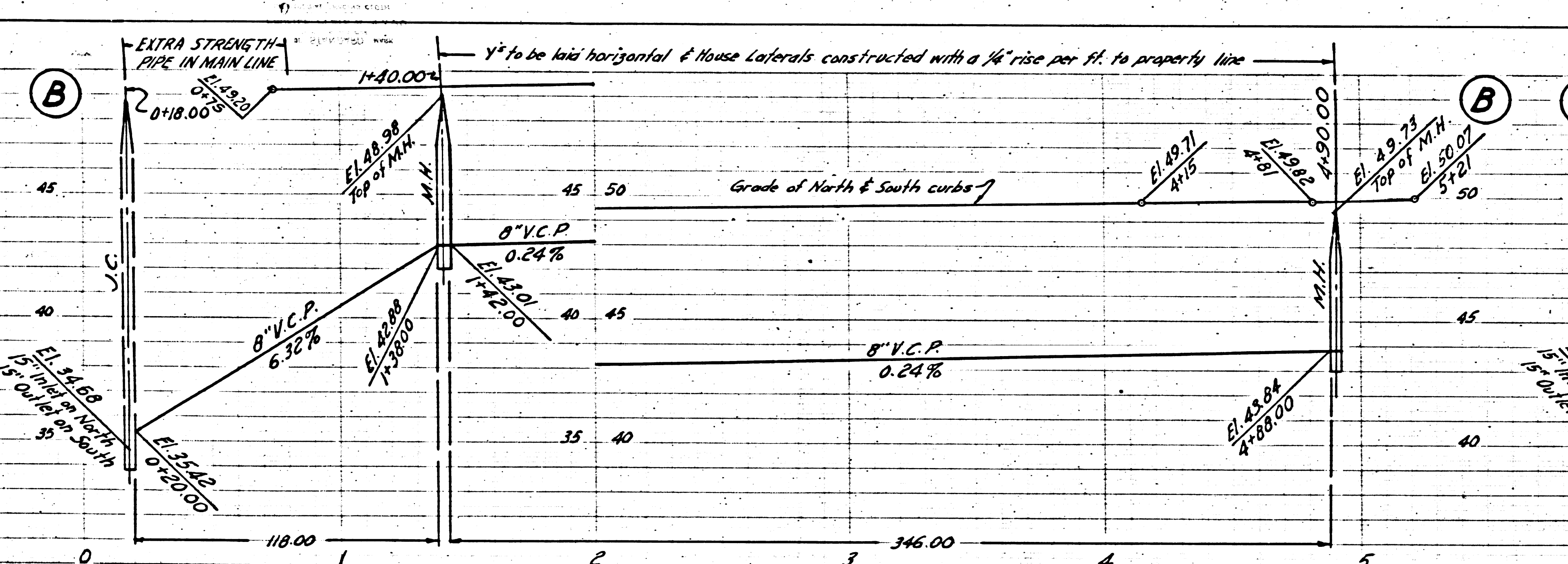
NO CHARGE CONNECT

CU

Page 6
P.C. 2985
J.N. 0981.91

SEE FOR
SECTION 2

(18852)

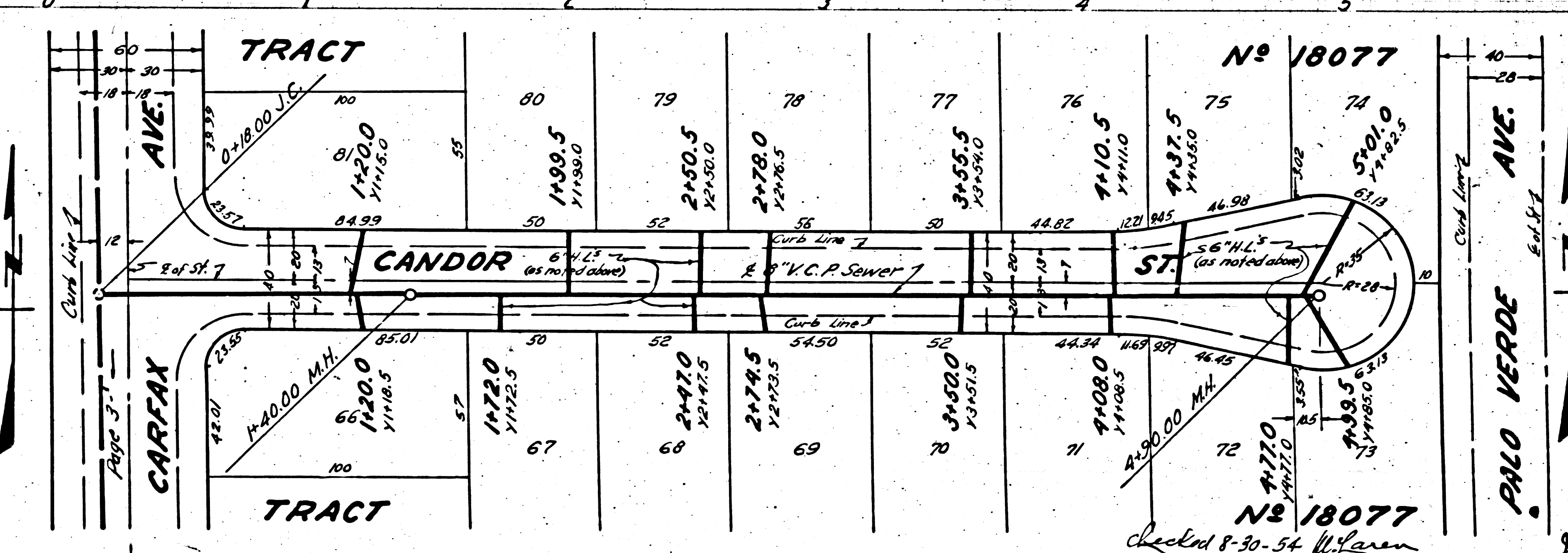
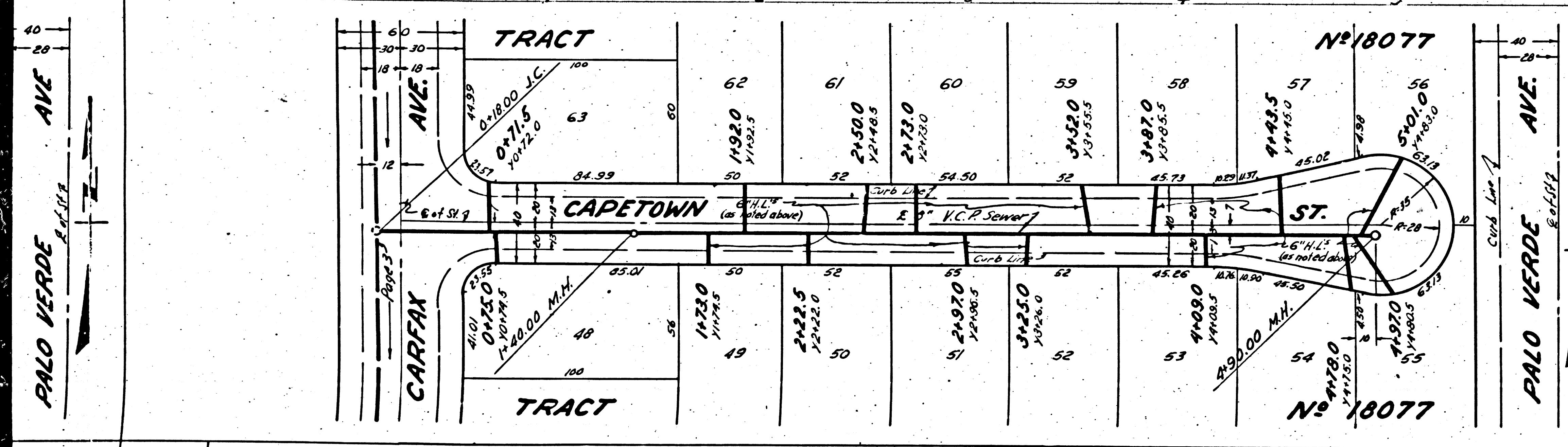


Page 5
P.C. 2985
J.N. 0981.91

NO CHARGE FOR
CONNECTIONS

(18891)

TRACT N° 18077
P.C. 2982

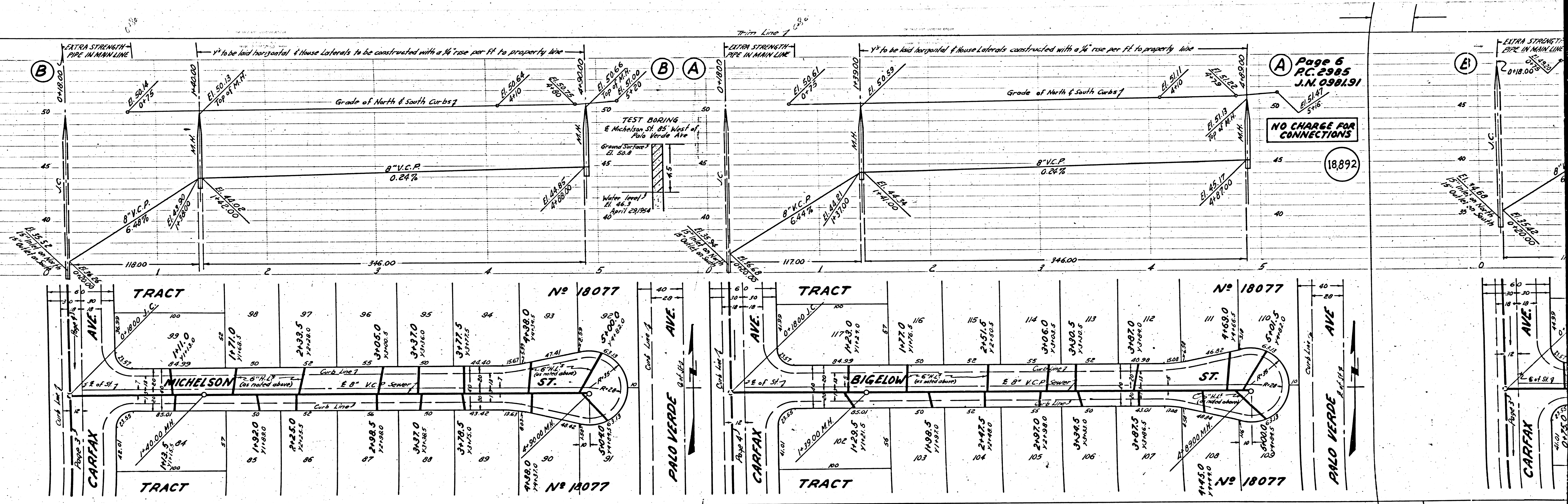


TRACT N° 18077
P.C. 2985
J.N. 0981.91
Checked 8-30-54 W. Larson

Page 7
P.C. 2985
J.N. 098191

TEST BORING
Orange Grove Ave Sewer At
85' W of Palo Verde Ave
Ground Surface
El. 52.10
Water Level
El. 47.9
April 29, 1954

NO CHARGE FOR
CONNECTIONS



Page 6
P.C. 2985
J.N. 098191

NO CHARGE FOR
CONNECTIONS

18,892

