

PC. 2836
J.N. 0982.01
PAGE 2
DOUBLE SCALE
REF. FOR CONNECTIONS

(18,371)

B.M. L. Q. 754-368 B.M. A.M. Elev. 1847.7 Bolt
Washer Set in Lead 2' W. of N.W. Return of
N.E. Corner off Slouson Ave. to La Cienega Blvd.
L.A.I. F.B. 200-II (E.I. 103,345) R.R. Dept. Elev.

B.M. L.A.I. Company F.B. 201 Pg. 22 Elev. 135.10
chiseled knob E. curb Corning Ave. N.E. Return
64th Street and Corning Ave.

B.M. L.A.I. Company F.B. 201 Pg. 2 Elev. 164.15
Spk. in Concrete Man. Sec. Cor. 18113 F. 2.5.
N.E. W. South Side Slouson Ave. N.E. Con
Golf Course 1/2 Mile West of La Cienega Blvd.

Old L.A. City Datum - Add 5.575 for Road Department
Old L.A. City Datum - Add 5.775 for U.S.G.S.

LENNOX BLDG. DIST. NO. 7

- NOTE: NO REPRESENTATIVE OF THE COUNTY ENGINEER WILL SURVEY OR LAY OUT ANY PORTION OF THE WORK. THE OWNER OR HIS AUTHORIZED REPRESENTATIVE SHALL FURNISH THE COUNTY ENGINEER WITH GRADE SHEETS AND STATIONS FOR ALL HOUSE LATERALS AND Y-BRANCHES AND SHALL PROVIDE STAKES FOR THEM AT THEIR PROPER LOCATIONS WITH STATIONING AS AWAY MARKED. ANY CHANGE IN LOCATION SHALL BE REQUESTED IN WRITING BY THE OWNER OR HIS REPRESENTATIVE. NO REVISIONS SHALL BE MADE IN THESE PLANS WITHOUT APPROVAL OF THE COUNTY ENGINEER.
1. USE STANDARD MANHOLE FRAMES AND COVERS, 3'-11 1/2".
 2. USE STANDARD STRENGTH PIPE EXCEPT AS NOTED.
 3. USE CEMENT MORTAR FOR ALL VITRIFIED CLAY PIPE JOINTS.
 4. RESURFACE ALL TRENCH WITHIN PAVED AREA TO MEET L.A. COUNTY ROAD DEPT. REQUIREMENTS.
 5. ALL STRUCTURES SHALL BE BRICK SEWER STRUCTURES - 5'-0" DIA. EXCEPT AS NOTED.
 6. PROVIDE STAKES ON THE PROPERTY LINES OR PROPERTY LINES PRODUCED AT RIGHT ANGLES TO THE SEWER LINE AT THE CENTER LINE OF EACH MANHOLE.
 7. CONSTRUCT TOPS OF ALL STRUCTURES IN RIGHTS OF WAY 6" ABOVE FINISHED GRADE.
 8. HOUSE LATERALS TO BE CONSTRUCTED WITH INVERT AT PROPERTY LINE (6" FEET BELOW CURB GRADE EXCEPT AS NOTED).
 9. FOR ALLOWABLE LEAKAGE TEST, USE FORMULA NO. 1, SPEC. SEC. 51.

PROFILE, ALIGNMENT AND GRADE OF
SANITARY SEWERS
TO BE CONSTRUCTED IN
TRACT NO. 18992 DOUBLE SCALE

PC. 2986
J.N. 0982.01
PAGE 1

(18,370)

(16)

PRIVATE CONTRACT NO. 2986
W.S. 24
SHEET 1 OF 4 SHEETS
SCALE: VERT. 1"=8'
HORIZ. 1"=40'
APRIL, 1954

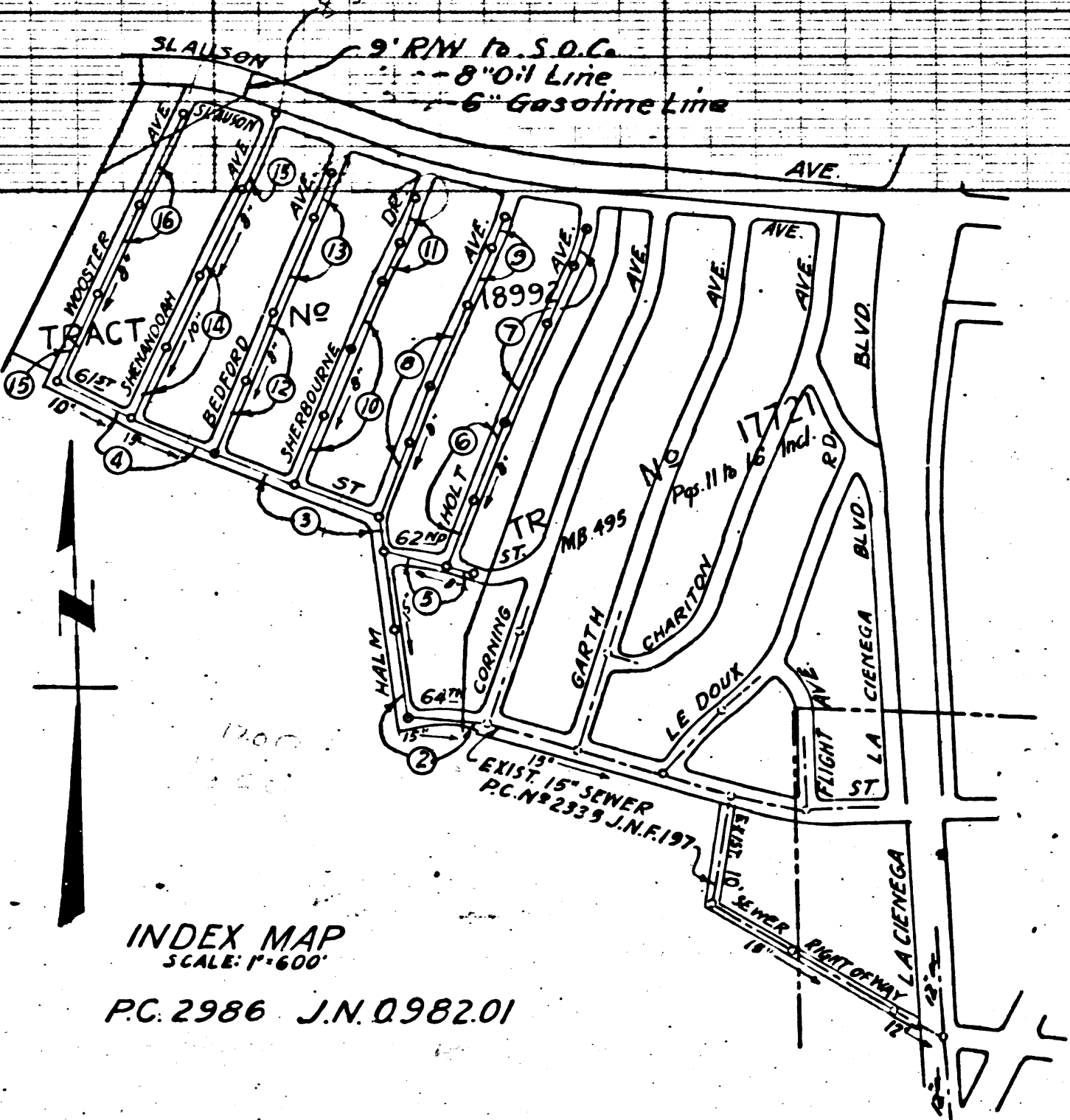
PREPARED IN THE OFFICES OF
LOS ANGELES INVESTMENT CO.
BY *E.R. Mendenhall* Reg. C.E. No. 1629
FOR LEGEND SEE PLAN NO. S-a-64

NOTE: GRADES TO WHICH THIS IMPROVEMENT IS TO BE CONSTRUCTED ARE SHOWN ON PLANS AND PROFILES. GRADE POINTS FOR TOP OF CURBS, CENTER LINE OF STREETS, OR CENTER LINE OF ALLEY ARE SHOWN BY CIRCLES ON PROFILES AT ALL POINTS BETWEEN DESIGNATED POINTS THE GRADE SHALL BE ESTABLISHED SO AS TO CONFORM TO A STRAIGHT LINE DRAWN BETWEEN SAID DESIGNATED POINTS. ELEVATIONS ARE IN FEET ABOVE L.A. CITY DATUM, ADD 5.775 TO OBTAIN U.S.G.S. DATUM. THIS DRAWING AND THE DATA HEREON ARE HEREBY MADE A PART OF THE SPECIFICATIONS. WORK SHALL BE CONSTRUCTED ACCORDING TO SPECIFICATIONS ON FILE IN THE OFFICE OF THE COUNTY ENGINEER AND SHALL BE PROSECUTED ONLY IN THE PRESENCE OF THE COUNTY ENGINEER. BEFORE WORK CAN BE STARTED, THE CONTRACTOR MUST OBTAIN A PERMIT TO EXCAVATE IN COUNTY STREETS FROM THE L.A. COUNTY ROAD DEPT. 1034 2ND ST AND MAKE A DEPOSIT WITH THE COUNTY ENGINEER, 133 L.A. COUNTY ENGINEERING BUILDING, SUFFICIENT TO COVER THE COST OF CONSTRUCTION INSPECTION AND RECORD PLANS. APPROVAL OF THIS PLAN BY THE COUNTY OF LOS ANGELES DOES NOT CONSTITUTE A REPRESENTATION AS TO THE ACCURACY OF THE LOCATION OF, OR THE EXISTENCE OR NON-EXISTENCE OF, ANY UNDERGROUND UTILITY, PIPE, OR STRUCTURE WITHIN THE LIMITS OF THIS PROJECT. THIS NOTE APPLIES TO ALL SHEETS.

COUNTY OF LOS ANGELES, CALIF.
APPROVED, WILLIAM J. FOX, COUNTY ENGINEER
BY *A.P. Collins*
SANITATION ENGINEER
CHECKED BY: *A.P. Collins* 5-7-54
OFFICE OF COUNTY ENGINEER, REG. C.E. NO. 7860

APPROVED, A.M. RAWN
CHIEF ENGINEER, DIVISION NO. 5 -
BY *A.P. Collins*
OFFICE ENGINEER

SHEET NO.	PAGES
1	1-5
2	6-10
3	11-15
4	16



NO CHARGE FOR CONNECTIONS
Reb. 5-7-54

checked 6-24-54 *M. J. Green*

TRACT NO. 18992

PC. 2986
J.N. 0982.01
PAGE 1

(11)

P.C. 2986
J.N. 0982.01
PAGE 4
DOUBLE SCALE

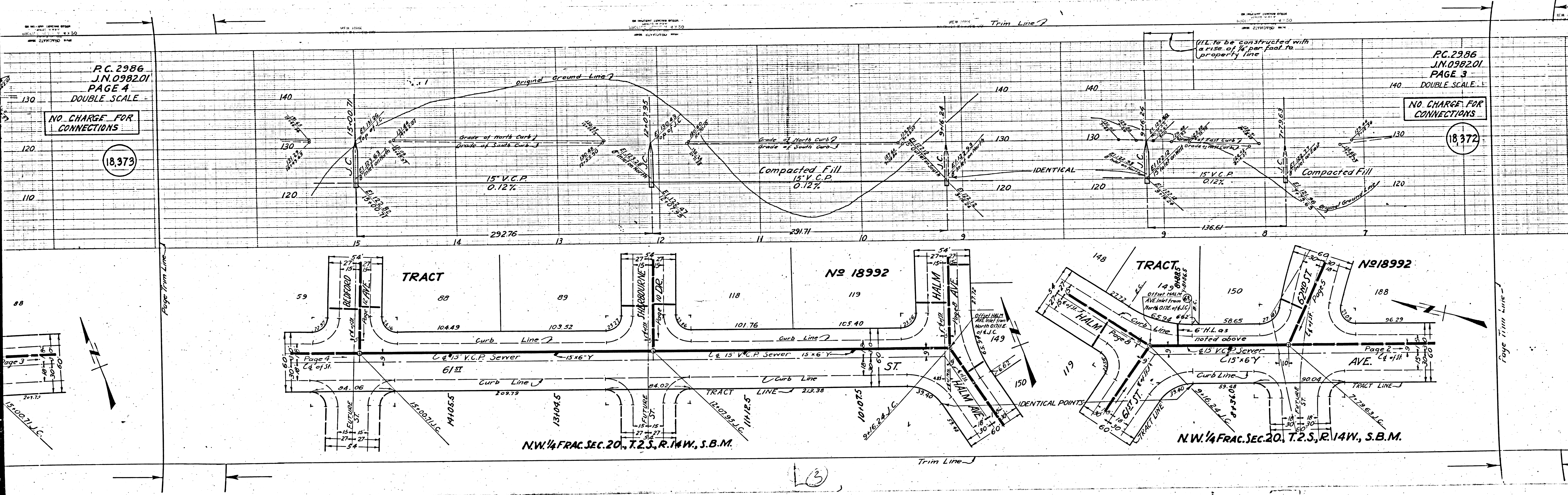
NO CHARGE FOR CONNECTIONS

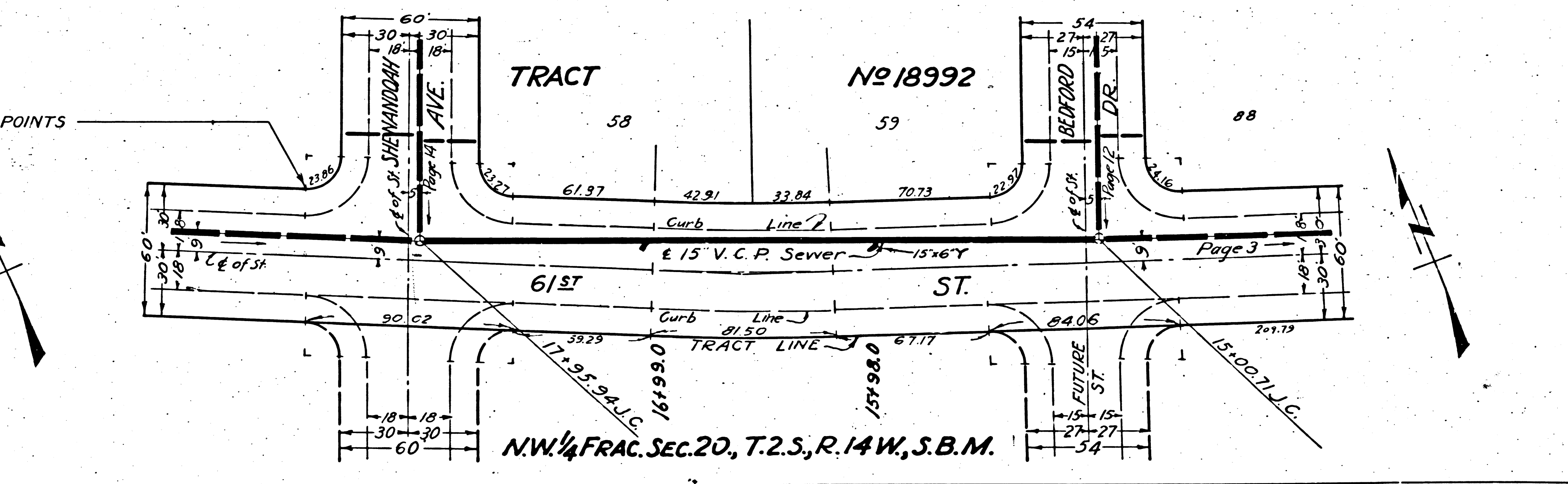
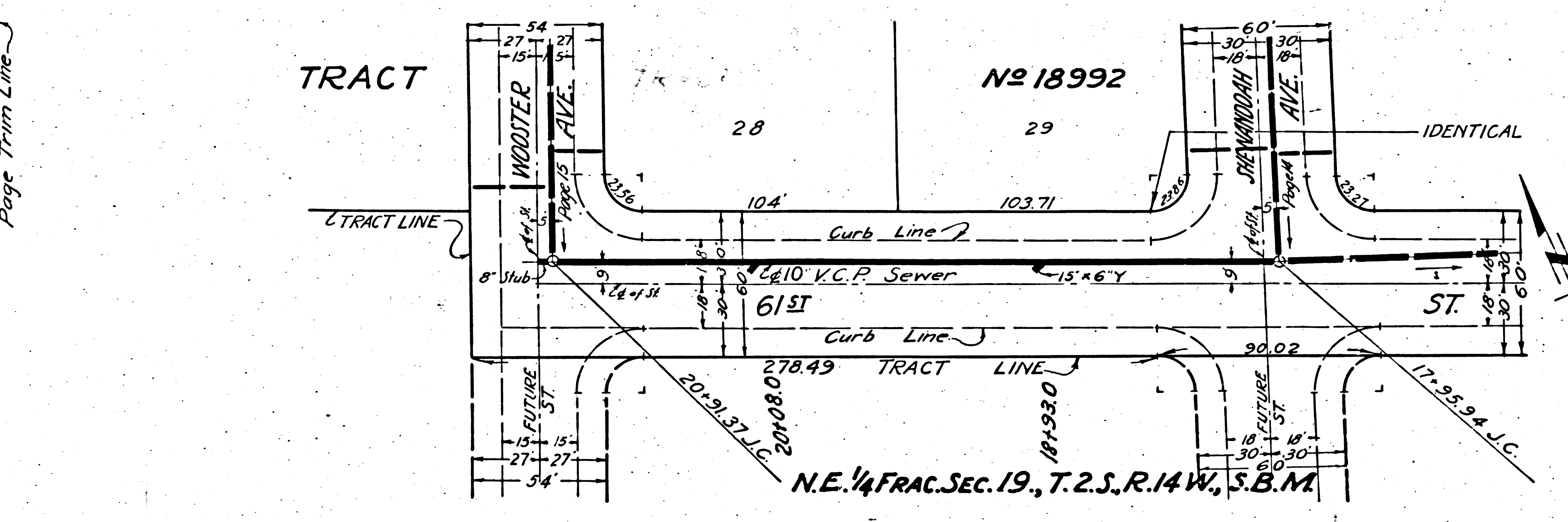
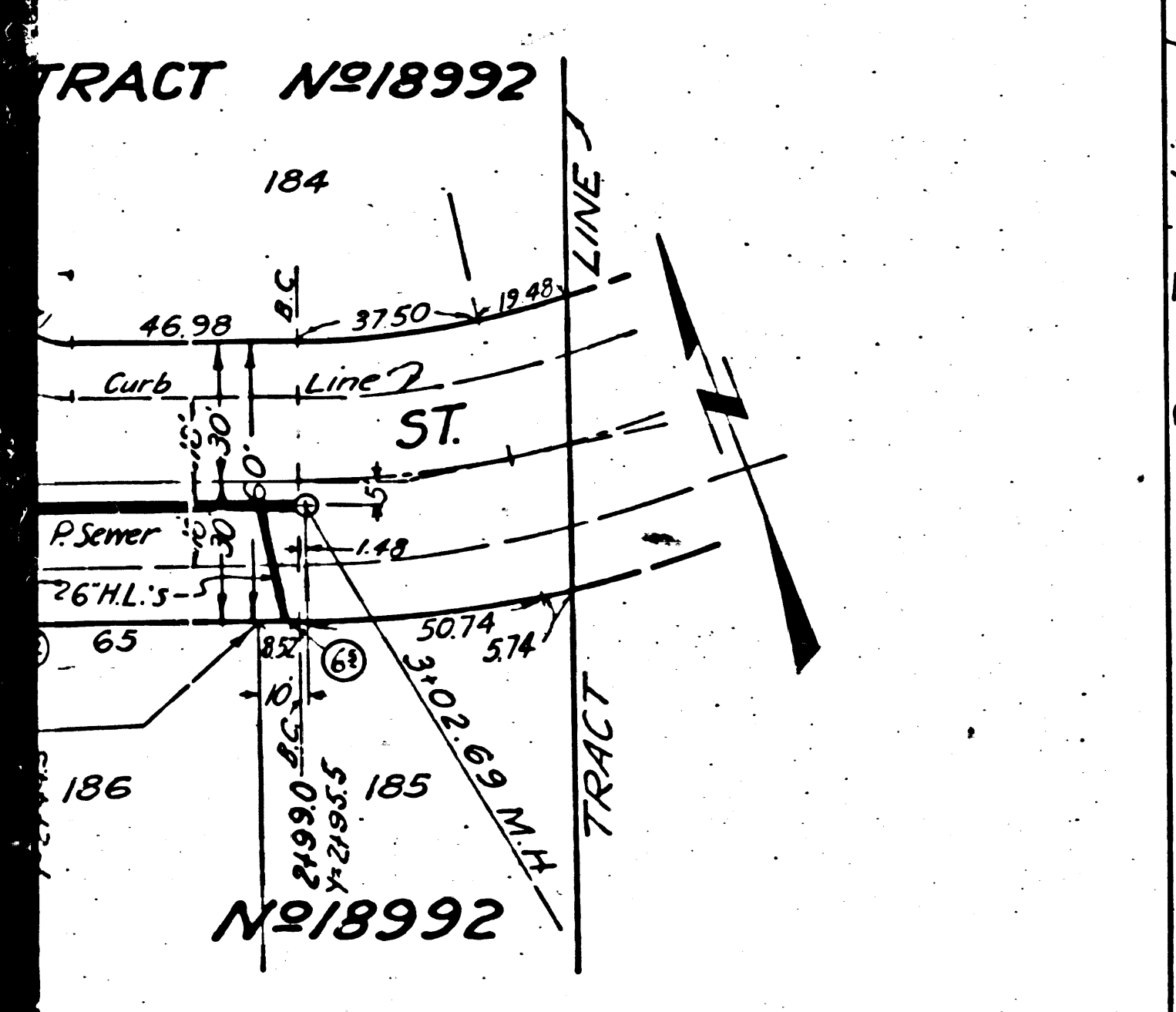
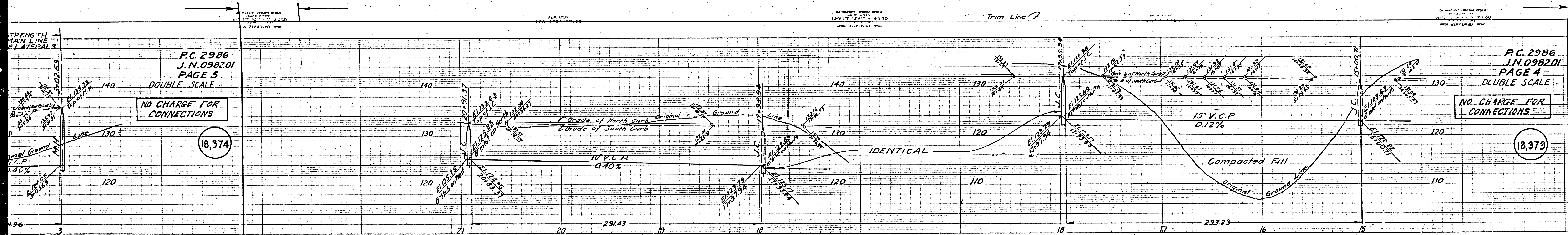
18,373

P.C. 2986
J.N. 0982.01
PAGE 3
DOUBLE SCALE

NO CHARGE FOR CONNECTIONS

18,372





P.C. 2986
J.N. 098201
PAGE 5
DOUBLE SCALE

NO CHARGE FOR CONNECTIONS

18,374

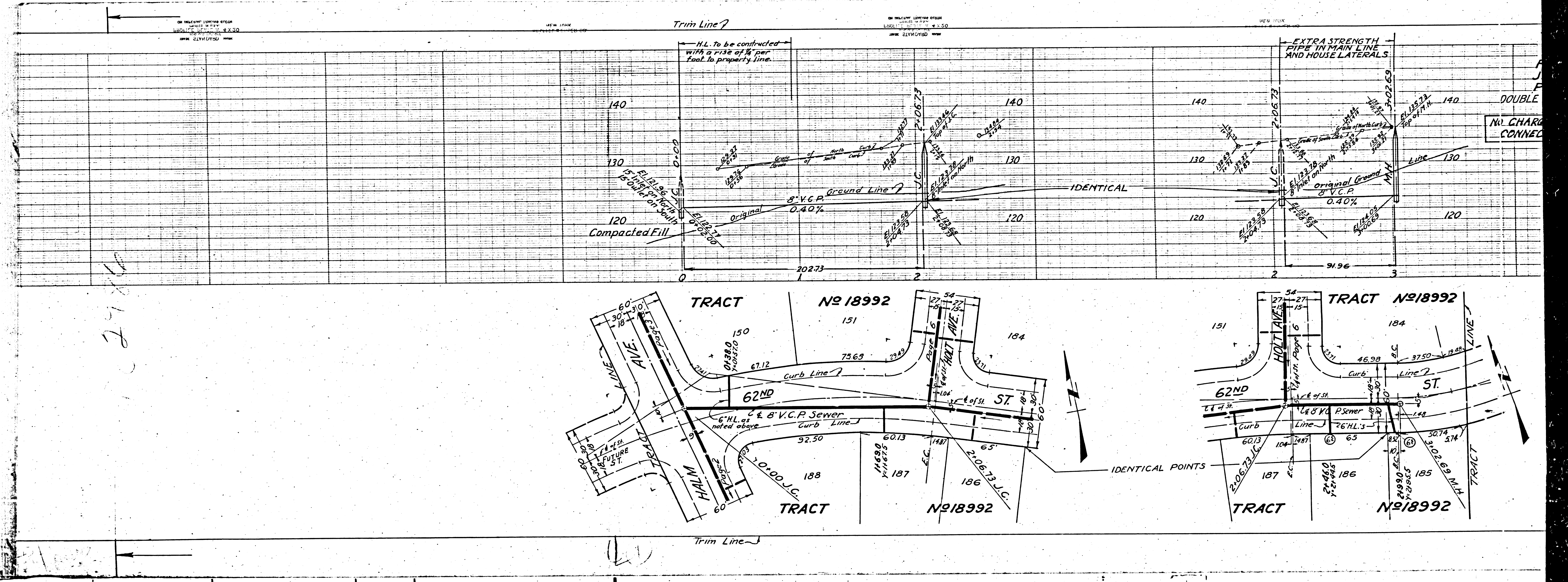
P.C. 2986
J.N. 098201
PAGE 4
DOUBLE SCALE

NO CHARGE FOR CONNECTIONS

18,373

N.E. 1/4 FRAC. SEC. 19, T. 2 S., R. 14 W., S.B.M.

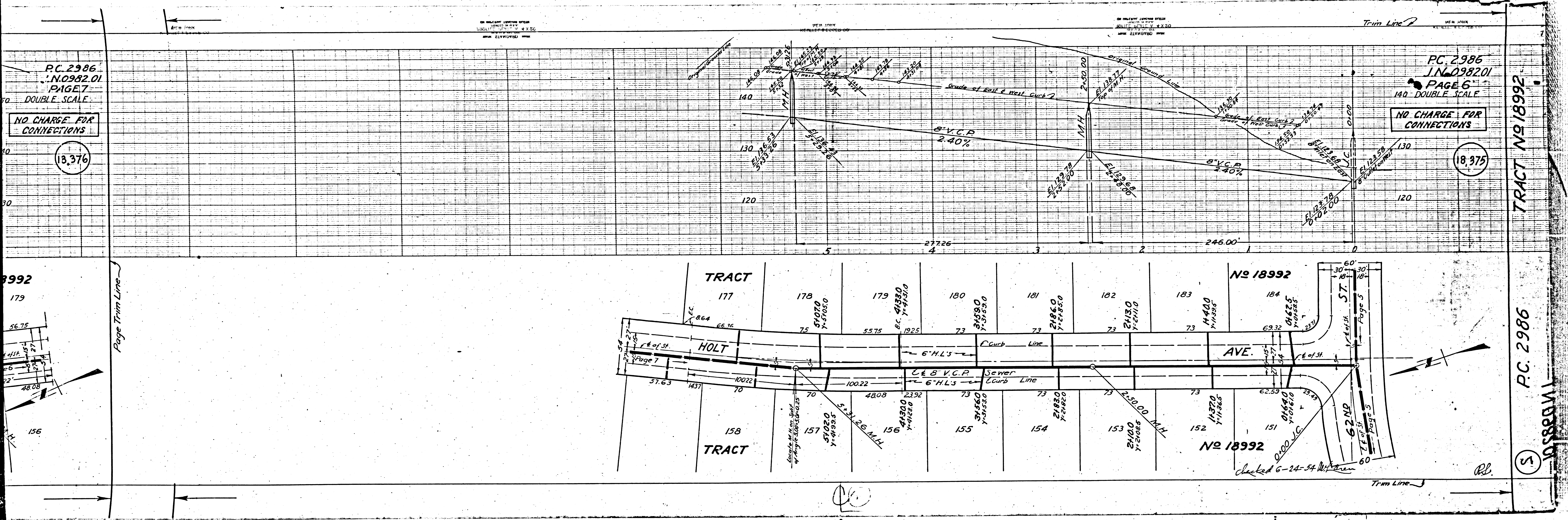
N.W. 1/4 FRAC. SEC. 20, T. 2 S., R. 14 W., S.B.M.



2786

DOUBLE
NO CHARGE
CONNECT

IDENTICAL POINTS



P.C. 2986
 I.N. 0982.01
 PAGE 7
 DOUBLE SCALE

P.C. 2986
 I.N. 0982.01
 PAGE 6
 1/4" DOUBLE SCALE

NO CHARGE FOR CONNECTIONS

NO CHARGE FOR CONNECTIONS

18,376

18,375

179

TRACT 177

TRACT 178

TRACT 179

TRACT 180

TRACT 181

TRACT 182

TRACT 183

TRACT 184

TRACT 185

TRACT 186

TRACT 187

TRACT 188

TRACT No 18992

P.C. 2986

18,376

Page Trim Line

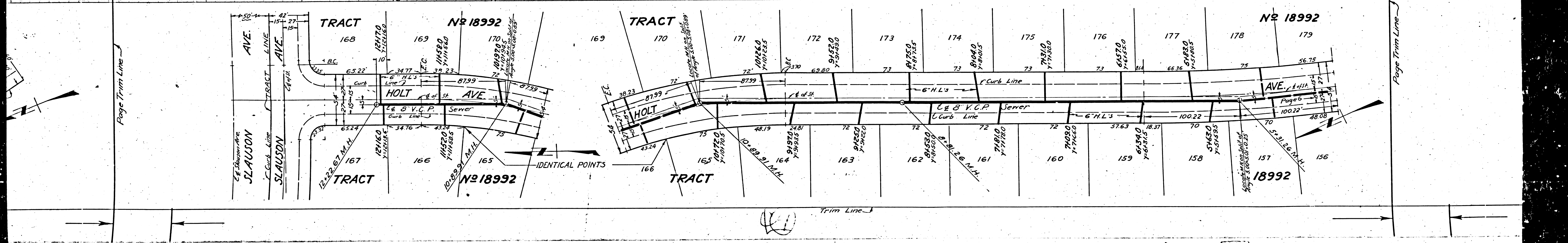
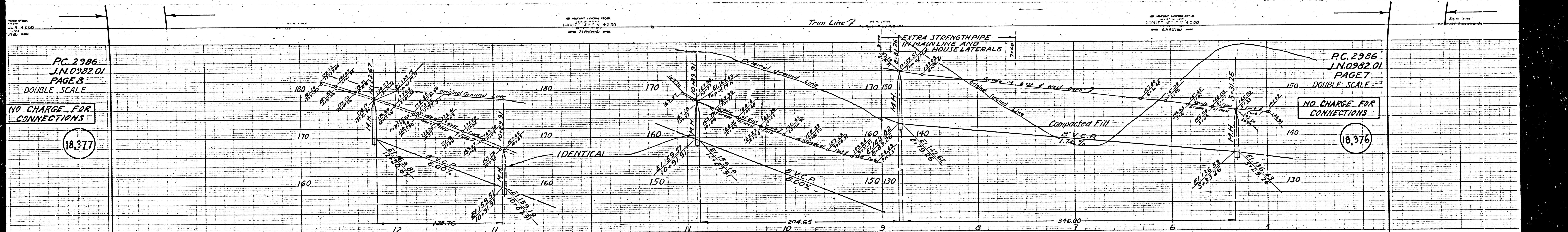
Page 5

Page 6

Page 7

checked 6-24-54

P.B.



P.C. 2986
J.N. 0982.01
PAGE 9

160 DOUBLE SCALE

NO CHARGE FOR CONNECTIONS

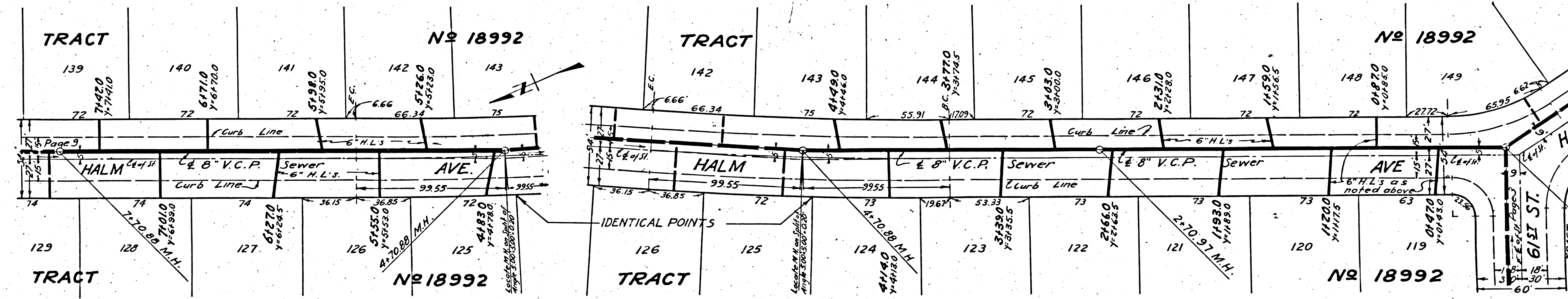
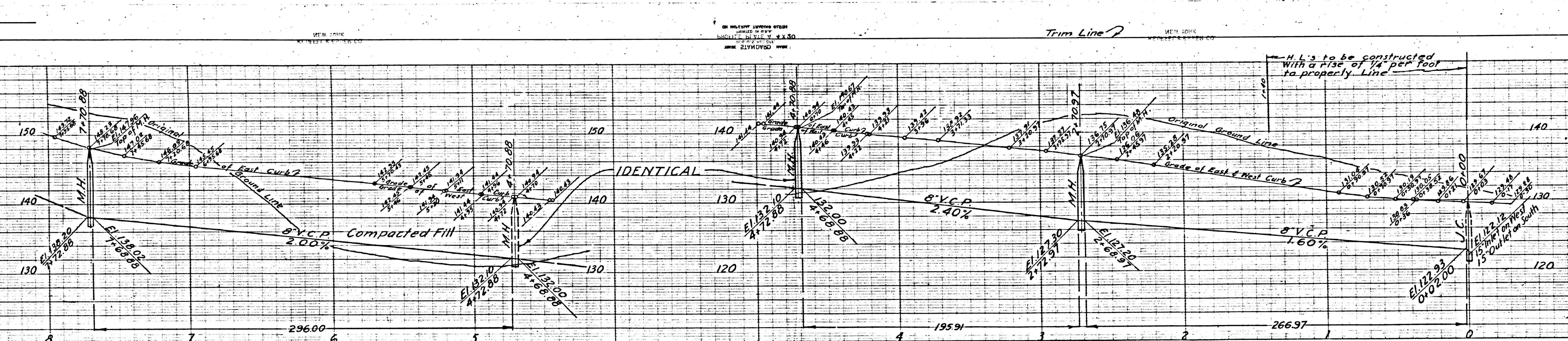
18,378

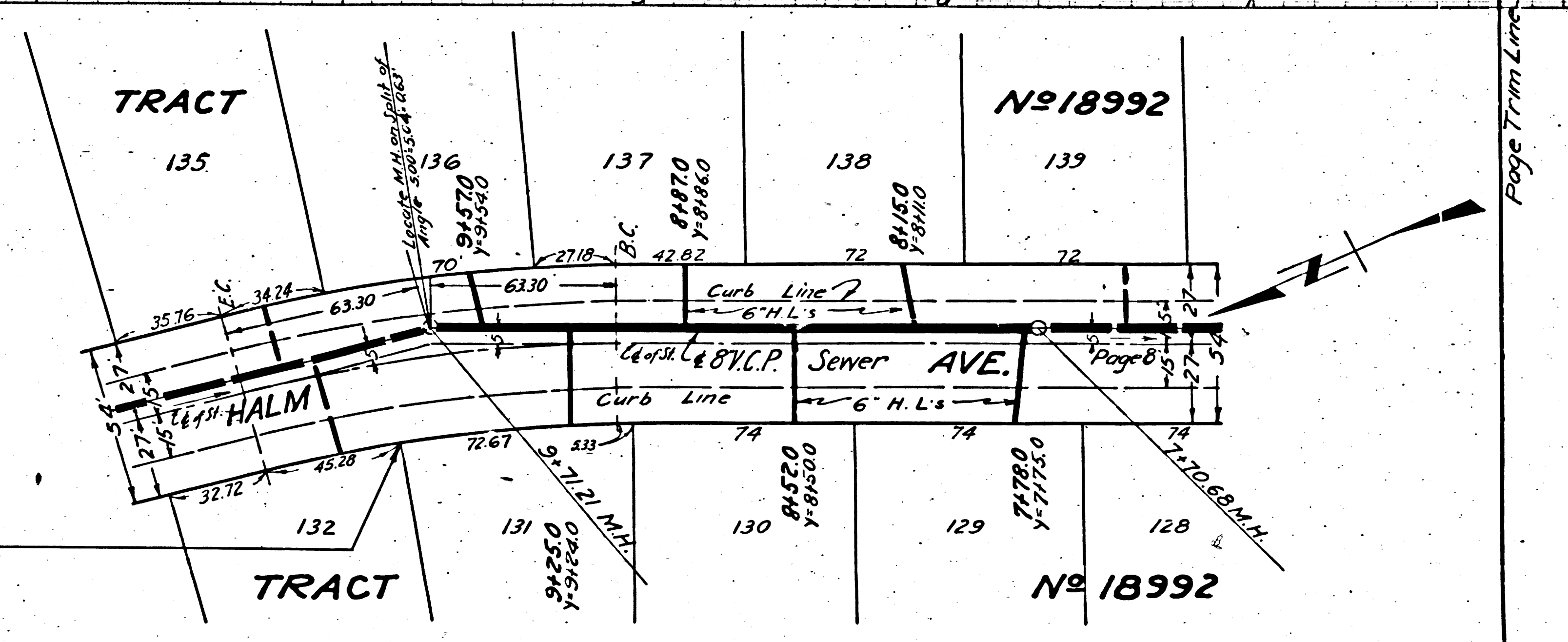
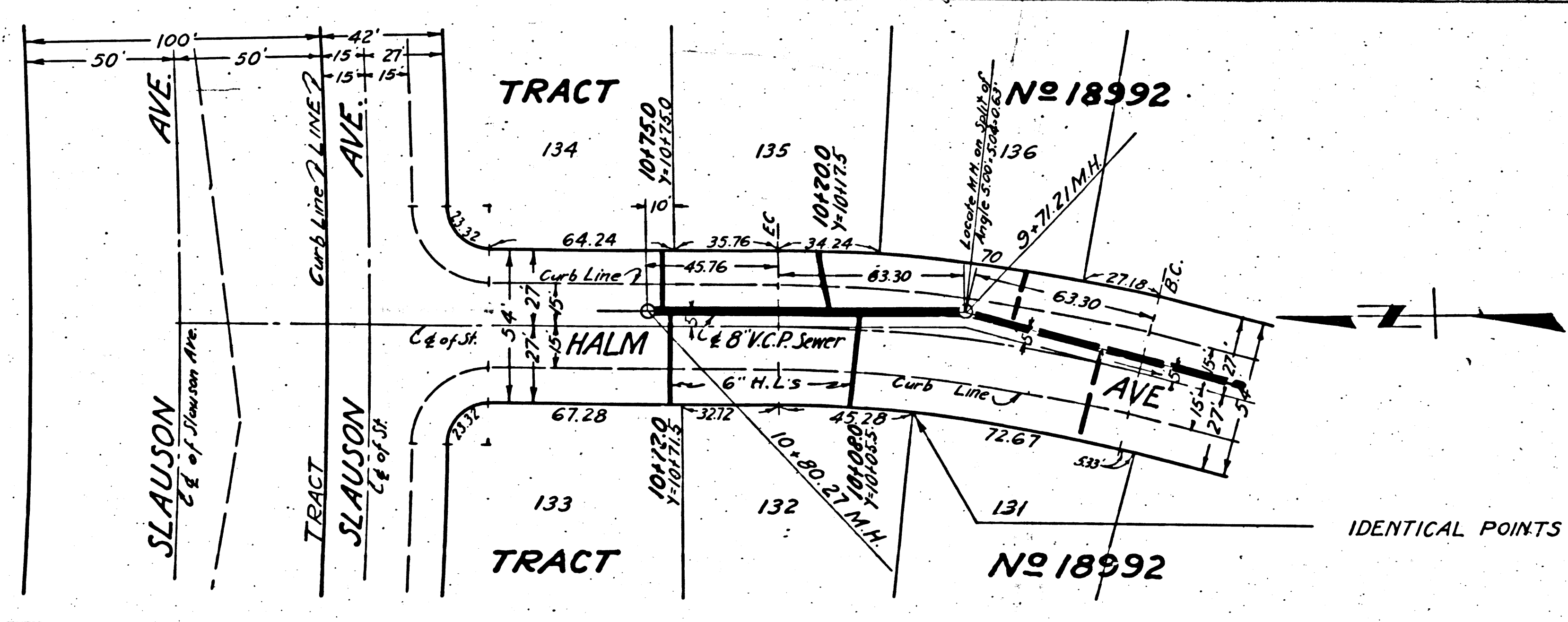
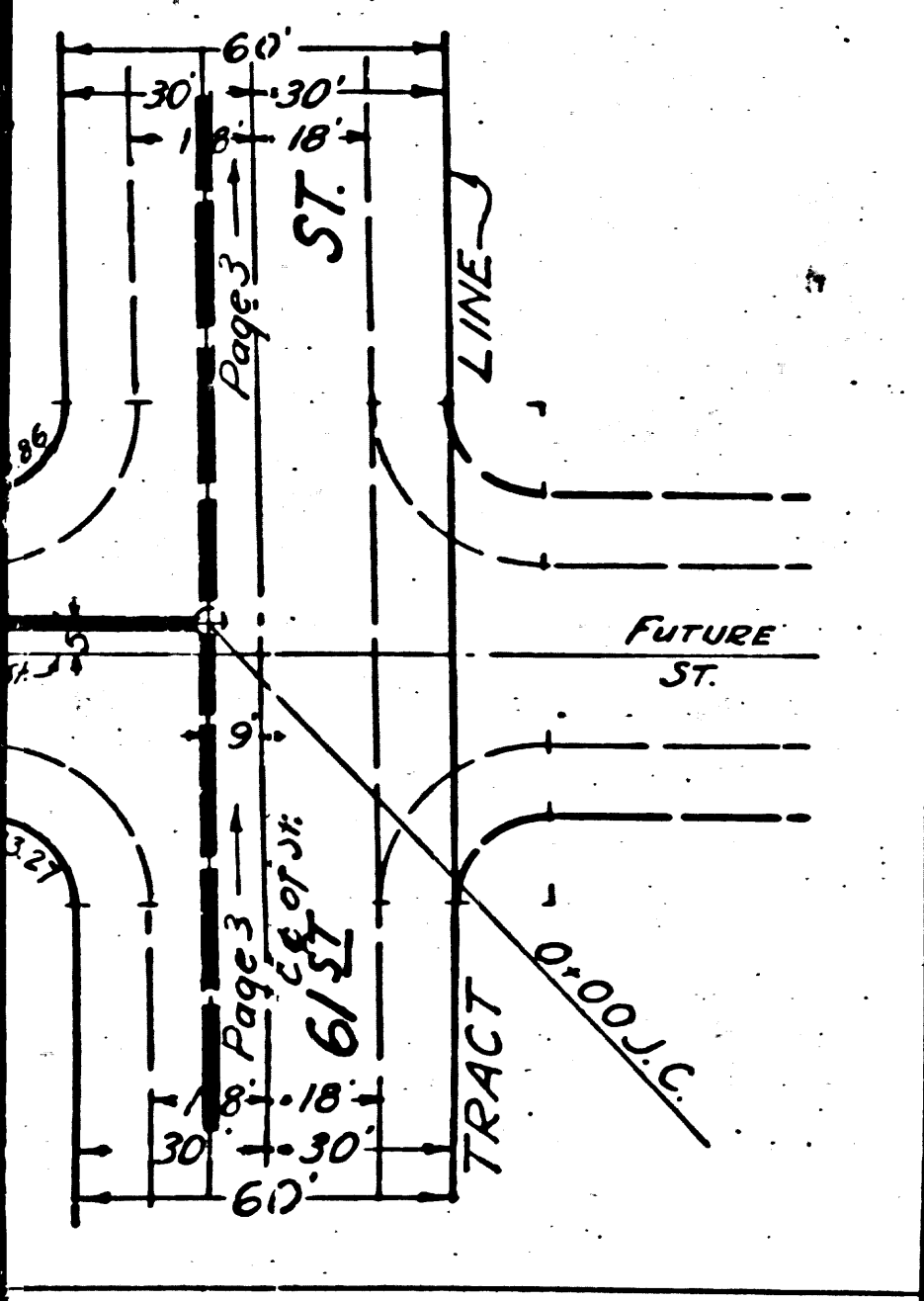
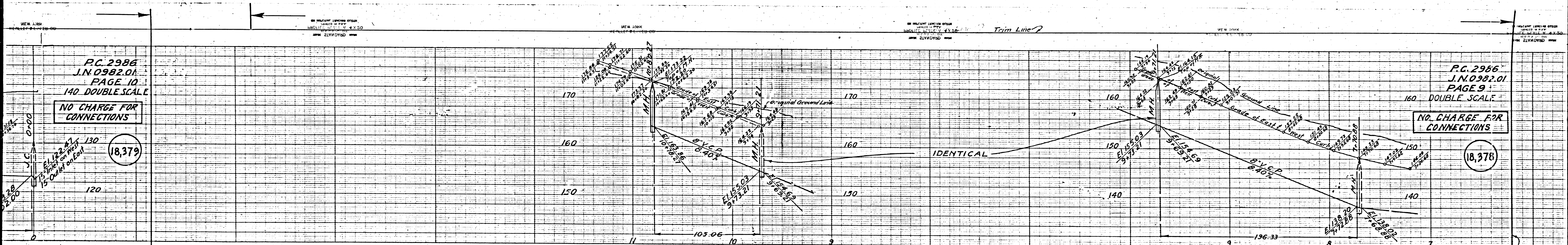
P.C. 2986
J.N. 0982.01
PAGE 8

160 DOUBLE SCALE

NO CHARGE FOR CONNECTIONS

18,377





PC 2986
J.N. 0982.01
PAGE 10
140 DOUBLE SCALE

NO CHARGE FOR CONNECTIONS

18,379

PC 2986
J.N. 0982.01
PAGE 9
160 DOUBLE SCALE

NO CHARGE FOR CONNECTIONS

18,378

IDENTICAL

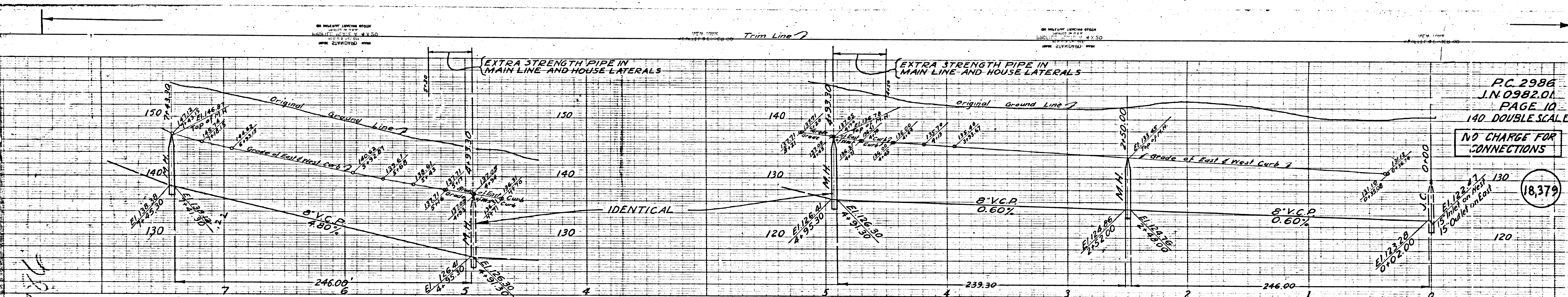
IDENTICAL POINTS

Trim Line

Trim Line

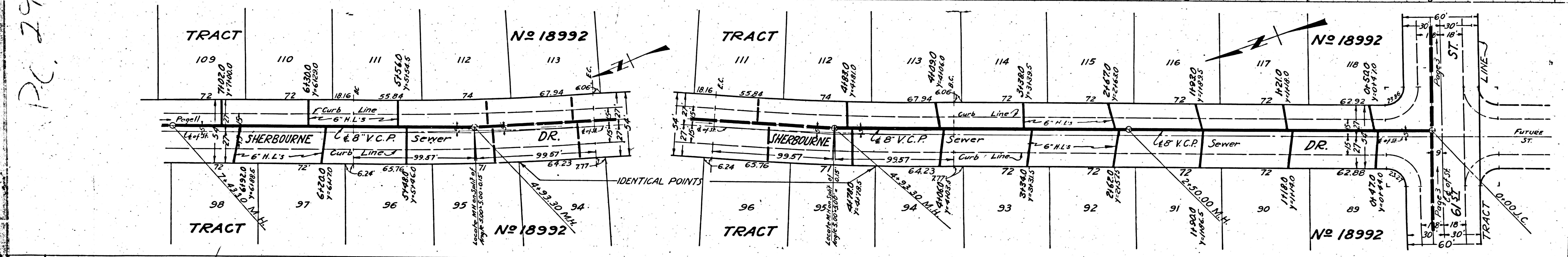
Page Trim Line

Page Trim Line



PC 2986
 J.N. 0982.01
 PAGE 10
 140 DOUBLE SCALE
 NO CHARGE FOR CONNECTIONS

18,379



PC 2986

Trim Line

P.C. 2986
J.N. 098201
PAGE 12
DOUBLE SCALE

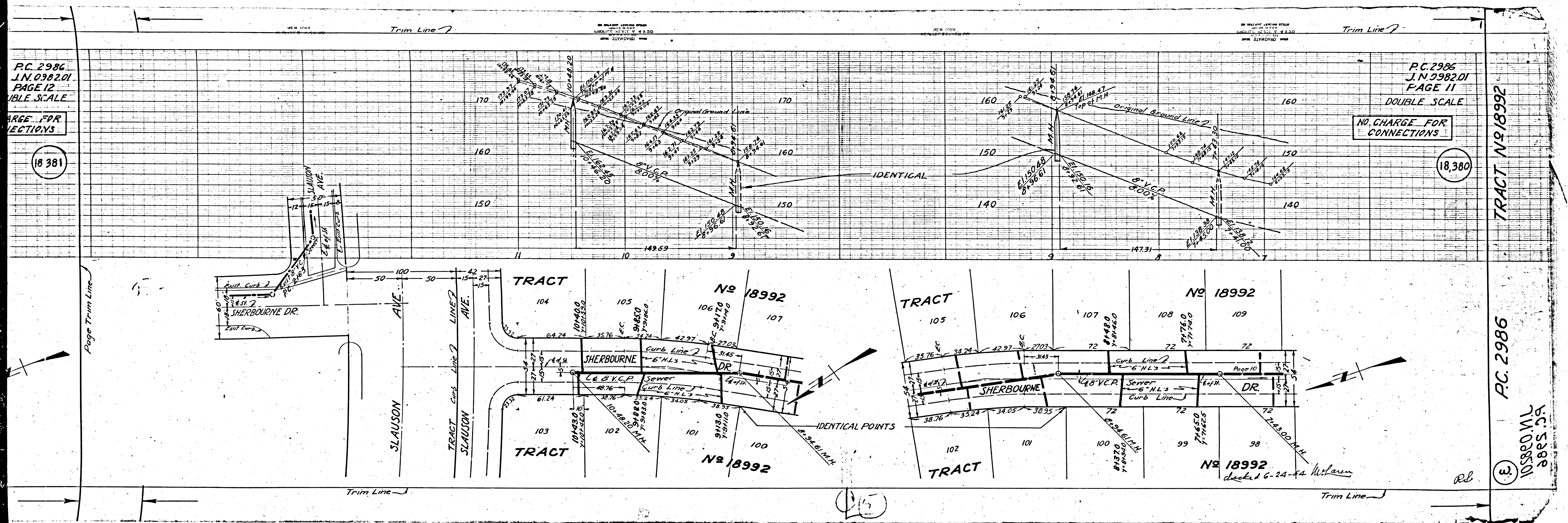
AREA FOR
CONNECTIONS

18 381

P.C. 2986
J.N. 098201
PAGE 11
DOUBLE SCALE

NO. CHARGE FOR
CONNECTIONS

18 380



P.C. 2986
J.N. 098201
PAGE 11
DOUBLE SCALE
NO. CHARGE FOR
CONNECTIONS

P.C. 2986
J.N. 098201
PAGE 11
DOUBLE SCALE
NO. CHARGE FOR
CONNECTIONS

P.C. 2986
J.N. 098201
PAGE 11
DOUBLE SCALE
NO. CHARGE FOR
CONNECTIONS

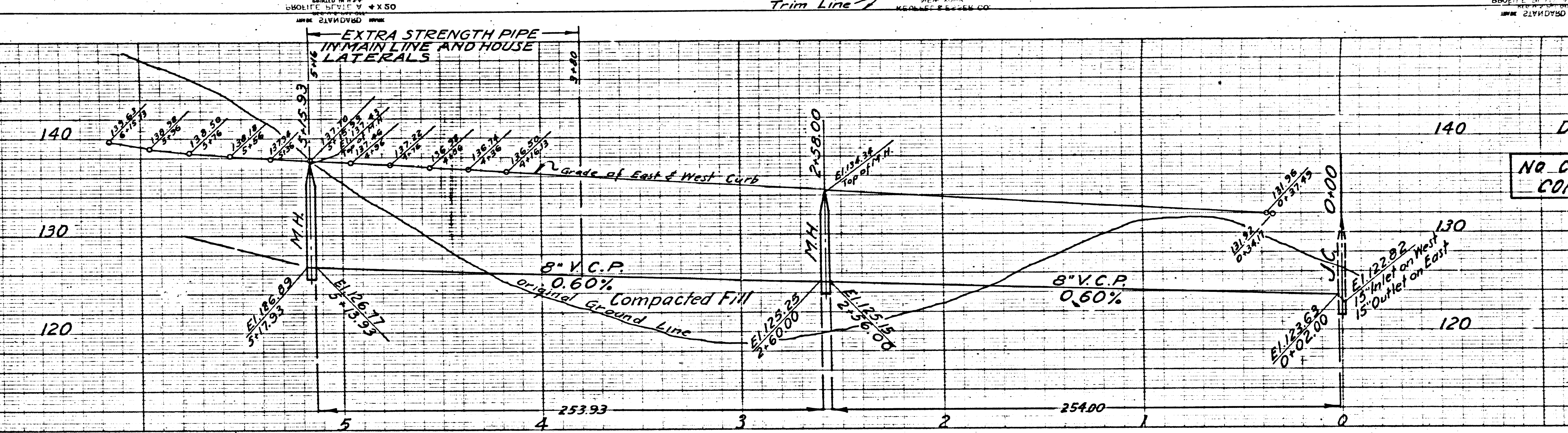
18 381

18 380

P.C. 2986
J.N. 0982.01
PAGE 13
DOUBLE SCALE

NO CHARGE FOR CONNECTIONS

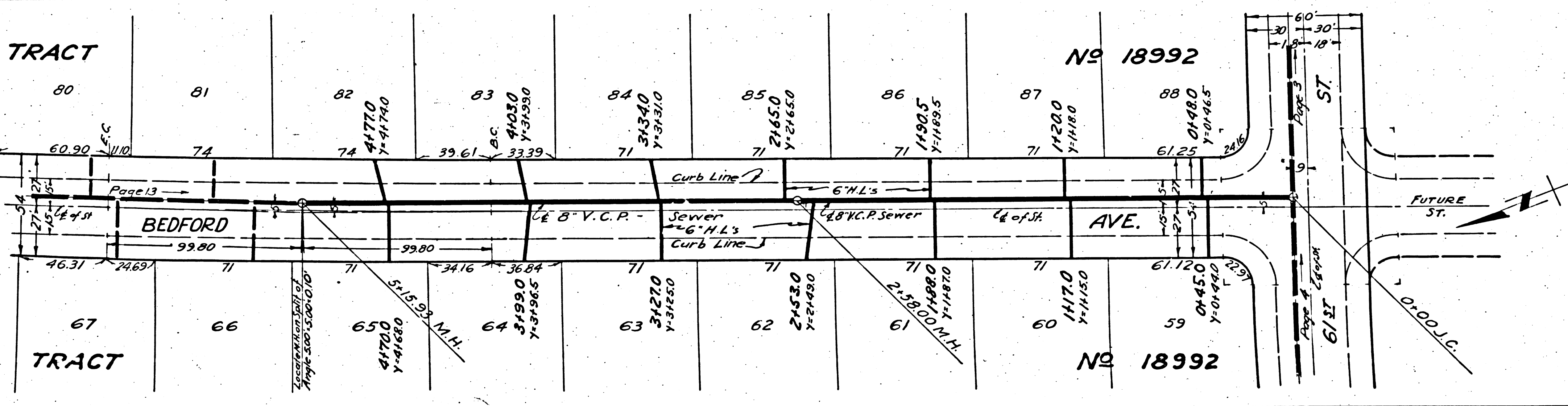
18,382



P.C. 2986
J.N. 0982.01
PAGE 12
DOUBLE SCALE

NO CHARGE FOR CONNECTIONS

18,381



P.C. 2986
J.N. 0982.01
PAGE 14
140' DOUBLE SCALE

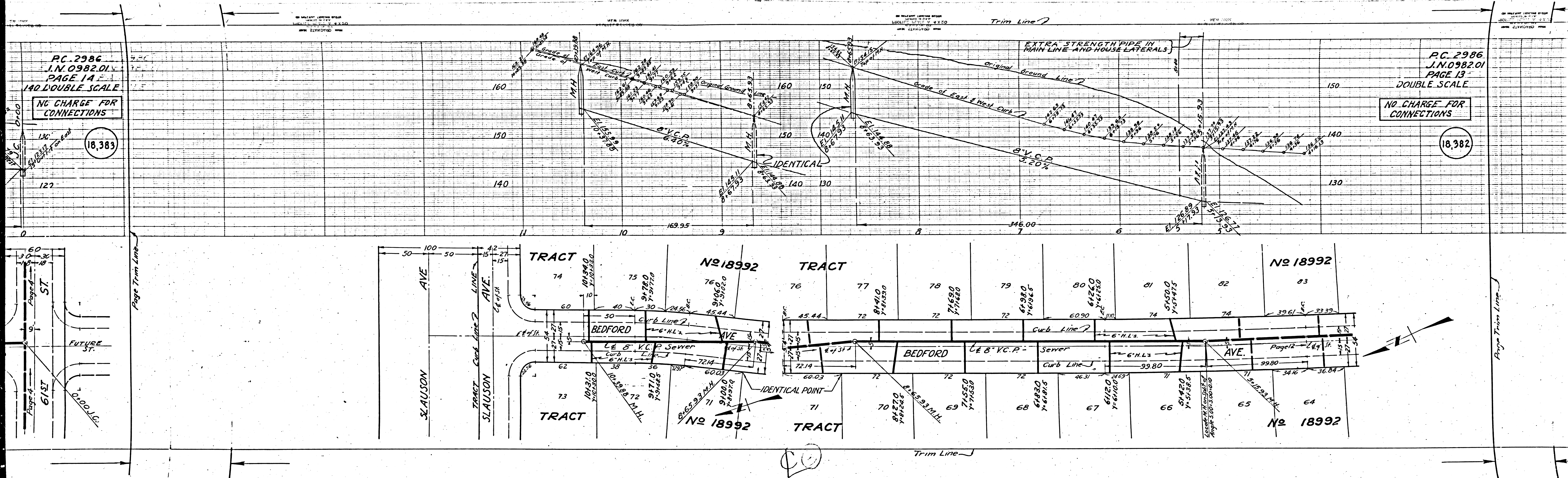
NO CHARGE FOR CONNECTIONS

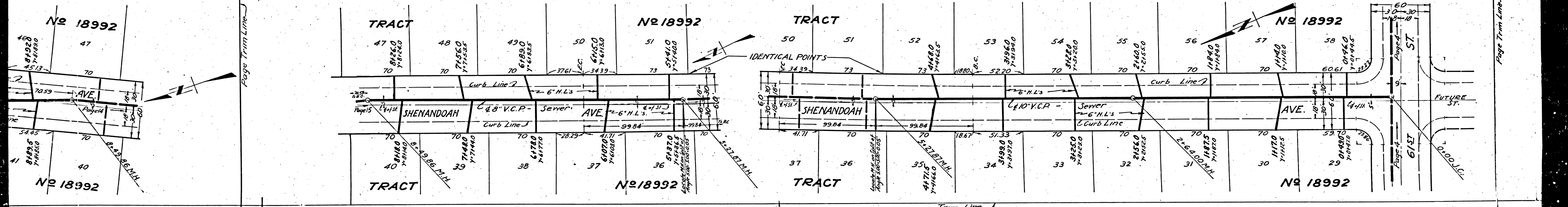
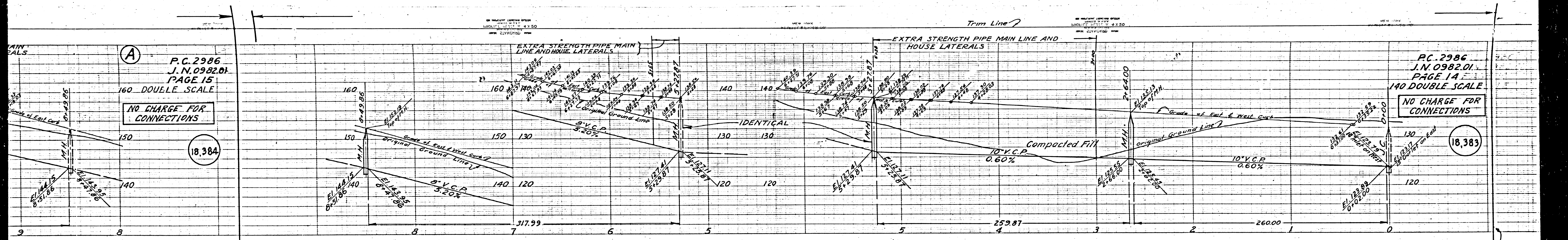
18,383

P.C. 2986
J.N. 0982.01
PAGE 13
DOUBLE SCALE

NO CHARGE FOR CONNECTIONS

18,382





P.C. 2986
J.N. 0982.01
PAGE 15
160 DOUBLE SCALE

NO CHARGE FOR CONNECTIONS

18,384

P.C. 2986
J.N. 0982.01
PAGE 14
140 DOUBLE SCALE

NO CHARGE FOR CONNECTIONS

18,383

No 18992

No 18992

TRACT

No 18992

TRACT

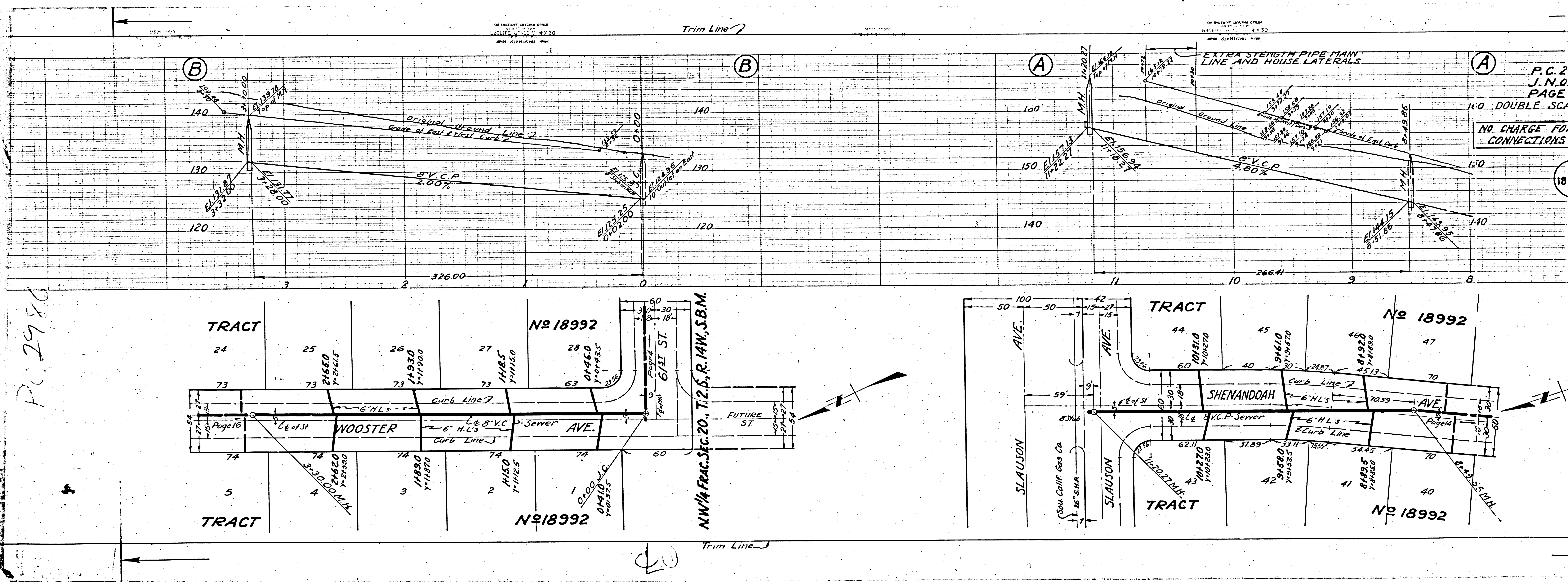
No 18992

TRACT

No 18992

TRACT

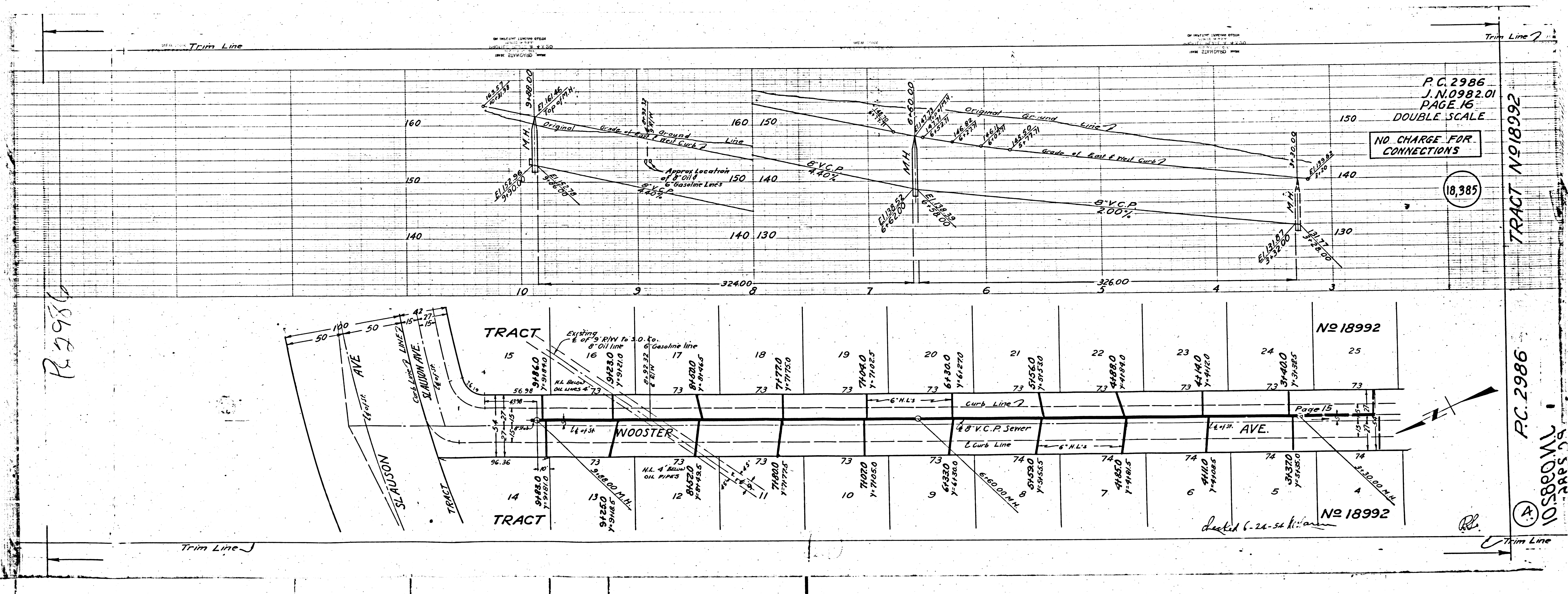
No 18992



P. 2980

P.C. 2
J.N.O.
PAGE
16.0 DOUBLE SCALE
NO. CHARGE FOR
CONNECTIONS

20



R 2986

P.C. 2986
 J.N. 0982.01
 PAGE 16
 DOUBLE SCALE

NO CHARGE FOR
 CONNECTIONS

18,385

TRACT NO 18992

R.C. 2986

105800 M.V.
 APPS 29

dated 6-26-54 h:ian

RE

Trim Line