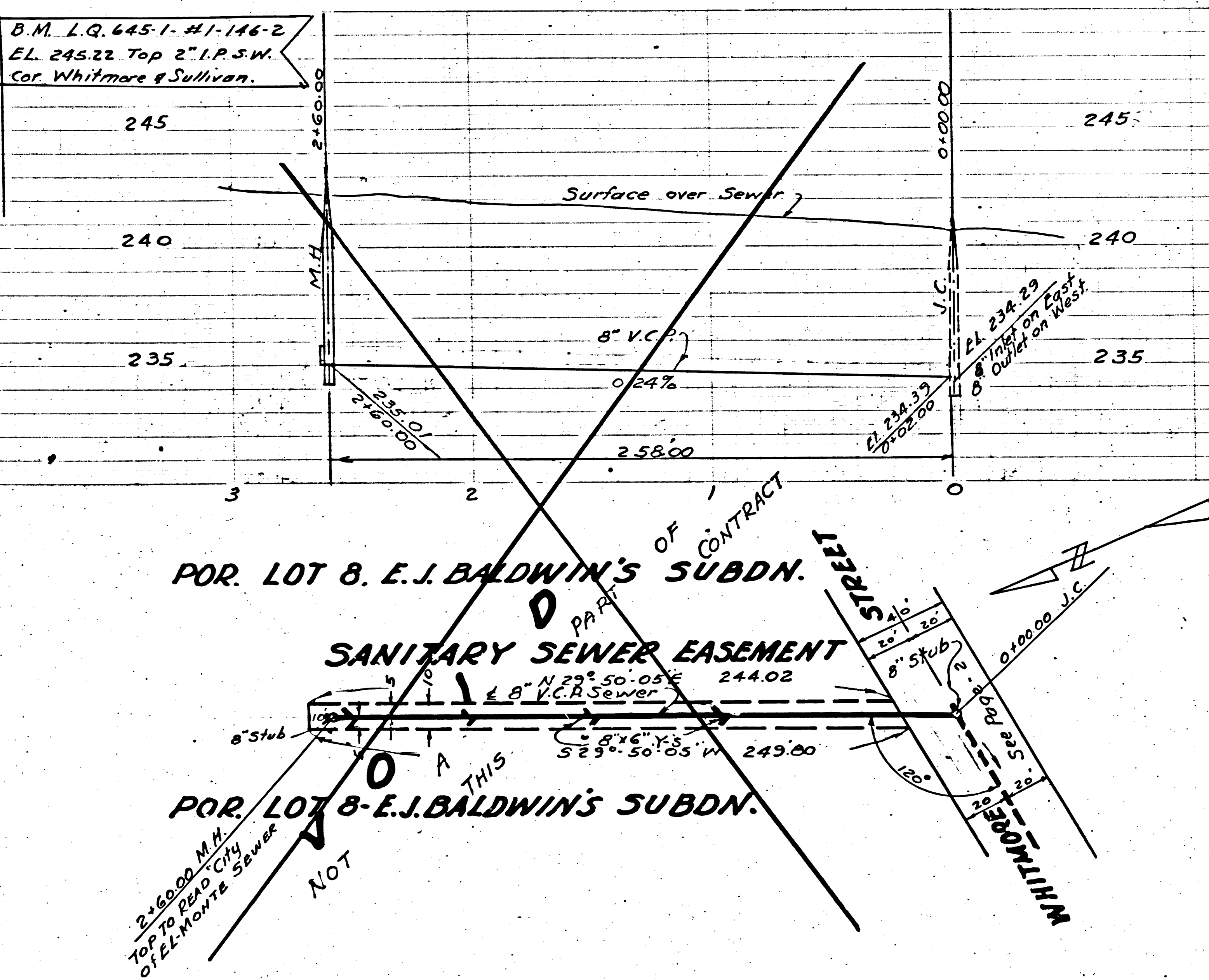


P.C. 2988  
J.N. 0982.21  
Page 2

(18,263)

NO CHARGE  
FOR CONNECTION  
COUNTY PORTION



TEMPLE CITY BLDG. DIST. NO. 5

**NOTE**  
Grades to which this improvement is to be constructed are shown on plans and profiles. Grade points for top of curb, center line of street, or center line of alley are shown by circles on profile. At all points between designated points, the grade shall be established so as to conform to a straight line drawn between said designated points. Elevations are in feet above U.S.C. datum or mean sea level. This drawing and the data hereon are hereby made a part of the specifications. Work shall be constructed according to special locations on file in the office of the County Engineer, and shall be prosecuted only in the presence of the County Engineer.

Before work can be started the contractor must obtain a permit to excavate in County streets from the L.A. County Road Dept., 108 N. 2nd St. and make a deposit with the County Engineer, 733 L.A. Co. Engr. Bldg. sufficient to cover the cost of construction inspection and record plans.

Approval of this plan by the County of Los Angeles does not constitute a representation as to the accuracy of the location of, or the existence, or non-existence of any underground utility pipe or structure within the limits of this project.

If work is to be done in a State Highway a permit must be obtained from the State of California, Division of Highways, 120 So. Spring Street.

**NOTE**  
Provide stakes on the property lines or property lines produced at right angles to the sewer line of the sewer line at each manhole.

No representative of the County Engineer shall survey or lay out any portion of the work.

The owner or his authorized representative shall furnish the County Engineer with grade sheets and stations for all house laterals and Y branches and shall provide stakes for them at their proper locations with stationing plainly marked. Any change in location shall be requested in writing by the owner or his representative. No revision shall be made in these plans without approval of the County Engineer.

USE STANDARD MANHOLE FRAMES AND COVERS, S-117 EXCEPT AS NOTED.

USE STANDARD STRENGTH PIPE, EXCEPT AS NOTED.

USE JOINT COMPOUND FOR ALL VITRIFIED CLAY PIPE JOINTS, SPEC. 31.

RE SURFACE ALL TRENCH WITHIN GRADED AREA TO MEET L.A. COUNTY ROAD DEPT. OR CIVIL STATE ANY DEPT. REQUIREMENTS IN ACCORDANCE WITH PERMIT.

GRADE FOUR FEET OF SEWER AT POINTS OF INTERFERENCE WITH SOLES, S-119.

HOUSE LATERALS TO BE CONSTRUCTED WITH 1/2" PER FOOT TO PROPERTY LINE.

ALL STRUCTURES SHALL BE BRICK SEWER STRUCTURES S-a-108.

FOR ALLOWABLE LEAKAGE TEST, USE FORMULA NP2, SPEC. SEC. 51.

INDEX MAP  
SCALE 1/4" = 100'

SHEET	PAGES
7	182

NO CHARGE  
FOR CONNECTION  
IN COUNTY PORTION ONLY  
Petersen 5-11-54

P.C. 2988  
J.N. 0982.21  
Page 1  
(18,267)

PROFILE ALIGNMENT & GRADES OF  
**SANITARY SEWERS**  
TO BE CONSTRUCTED IN  
**WHITMORE STREET**

Partly in the City of EL MONTE and  
Partly in Unincorporated County Territory

PRIVATE CONTRACT NO 2988  
W.S. 37  
ONE SHEET

VERT. 1" = 4'  
SCALE HORIZ. 1" = 40'

MARCH 1954

PREPARED IN THE OFFICE OF

Gray R. Bouman  
P.E. 2267

FOR LEGEND - SEE PLAN NO S-a-64

COUNTY OF LOS ANGELES, CALIFORNIA

APPROVED: WILLIAM J. FOX, COUNTY ENGINEER.

By J.P. Collins  
SANITATION ENGINEER.

APPROVED: A.M. RAWN, CHIEF ENGINEER  
COUNTY SANITATION DISTRICT NO. 15

By George Posthumus  
OFFICE ENGINEER

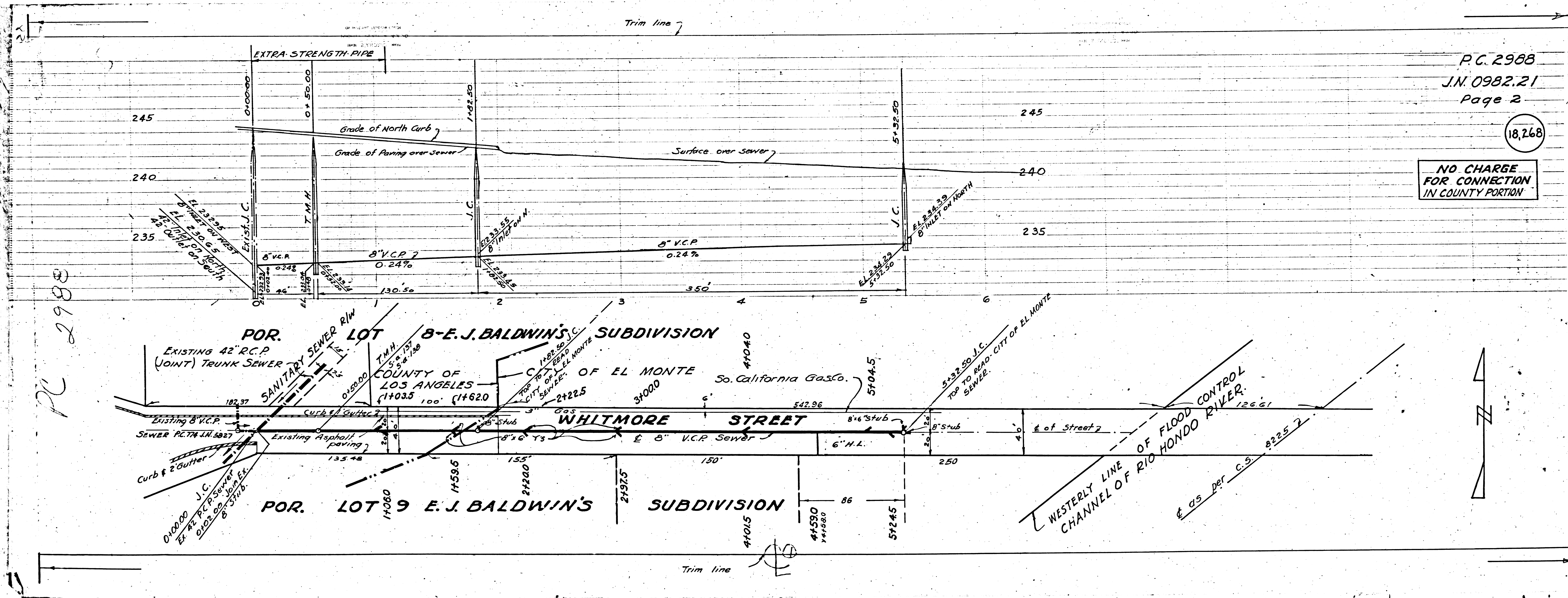
CHECKED BY: P.P. Petersen 5-11-54  
OFFICE OF THE COUNTY ENGINEER, REG. C.E. NO. 7860

CITY OF EL MONTE  
APPROVED: J.C. Petersen  
CITY ENGINEER

Before breaking into any existing structure  
and before final acceptance of this work,  
County Sanitation District should be notified  
in order that required inspection may be made.

ISSUED W.L.





P.C. 2988  
 J.N. 0982.21  
 Page 2

18,268

NO CHARGE  
 FOR CONNECTION  
 IN COUNTY PORTION

PC 2988

