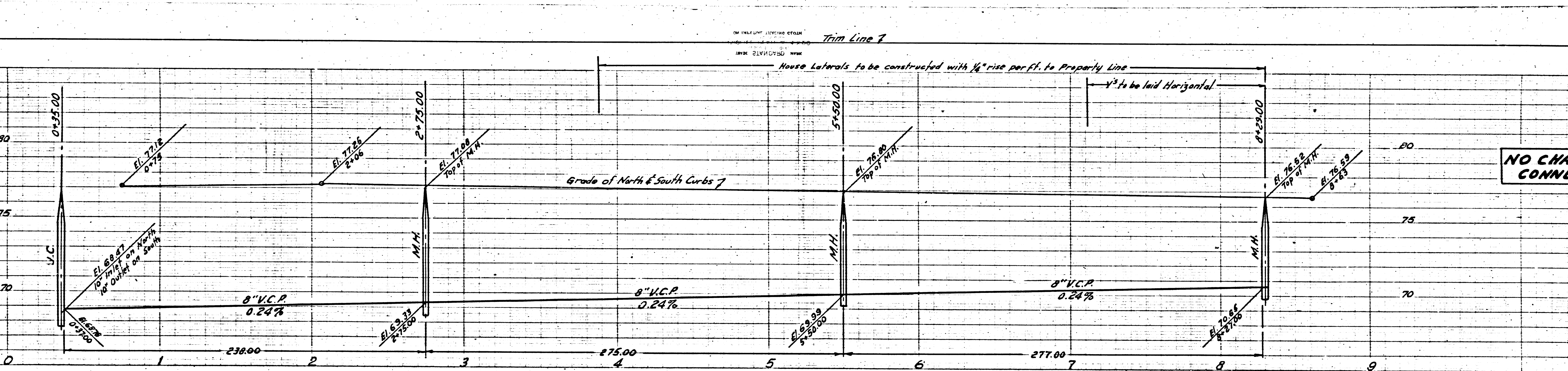


6
3009
098481

AR
VS

(18,522)



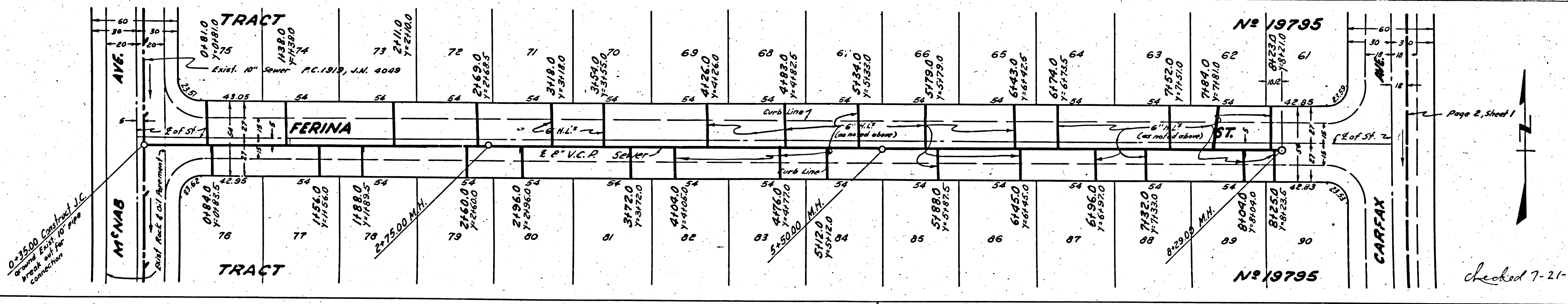
Page 5
P.C. 3009
J.N. 098481

NO CHARGE FOR CONNECTIONS

(18,521)

P.C. 3009

TRACT No 19795



Page 2, Sheet 1

checked 7-21-54 W. L. ...

184860.M.
P.C. 3009
J.N. 098481

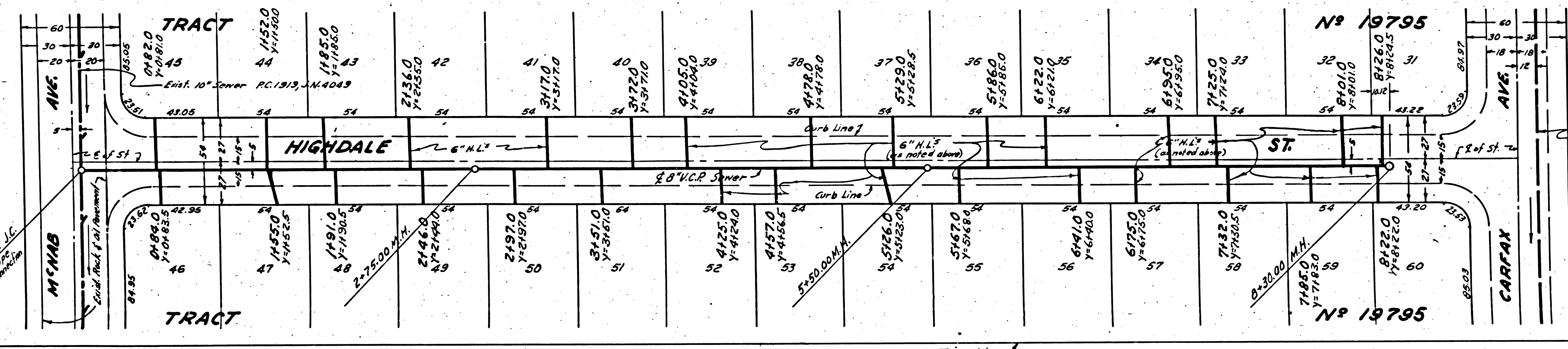
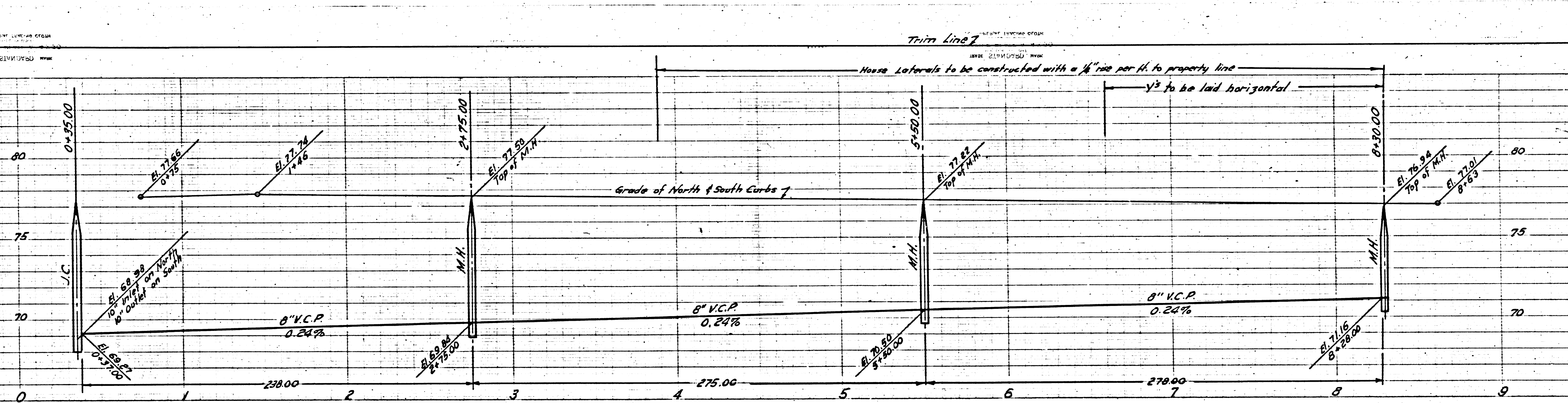
Trim Line

NO CHARGE FOR CONNECTIONS

NO CHARGE FOR CONNECTIONS

18,523

18,522



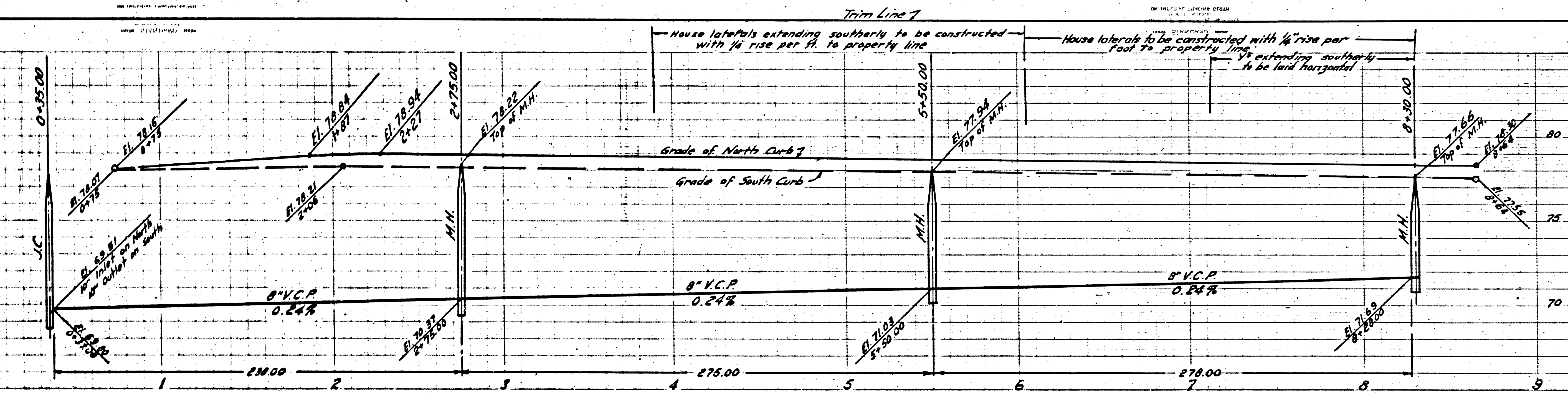
Sheet 1

Page 2 Sheet 1

TEST BORING
Ives Street (South side)
220'± E. of E. of McNab Ave. 00

Ground Surface Elev. 78.5

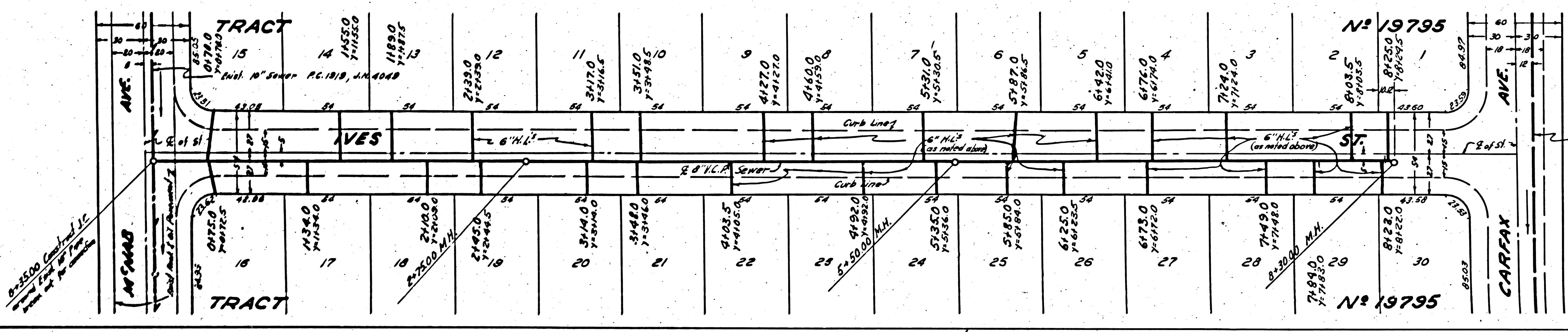
Boring taken January 18, 1954 (No water)



NO CHARGE FOR CONNECTIONS

Page 1
R.C. 300.9
J.N. 098181

(18,524)

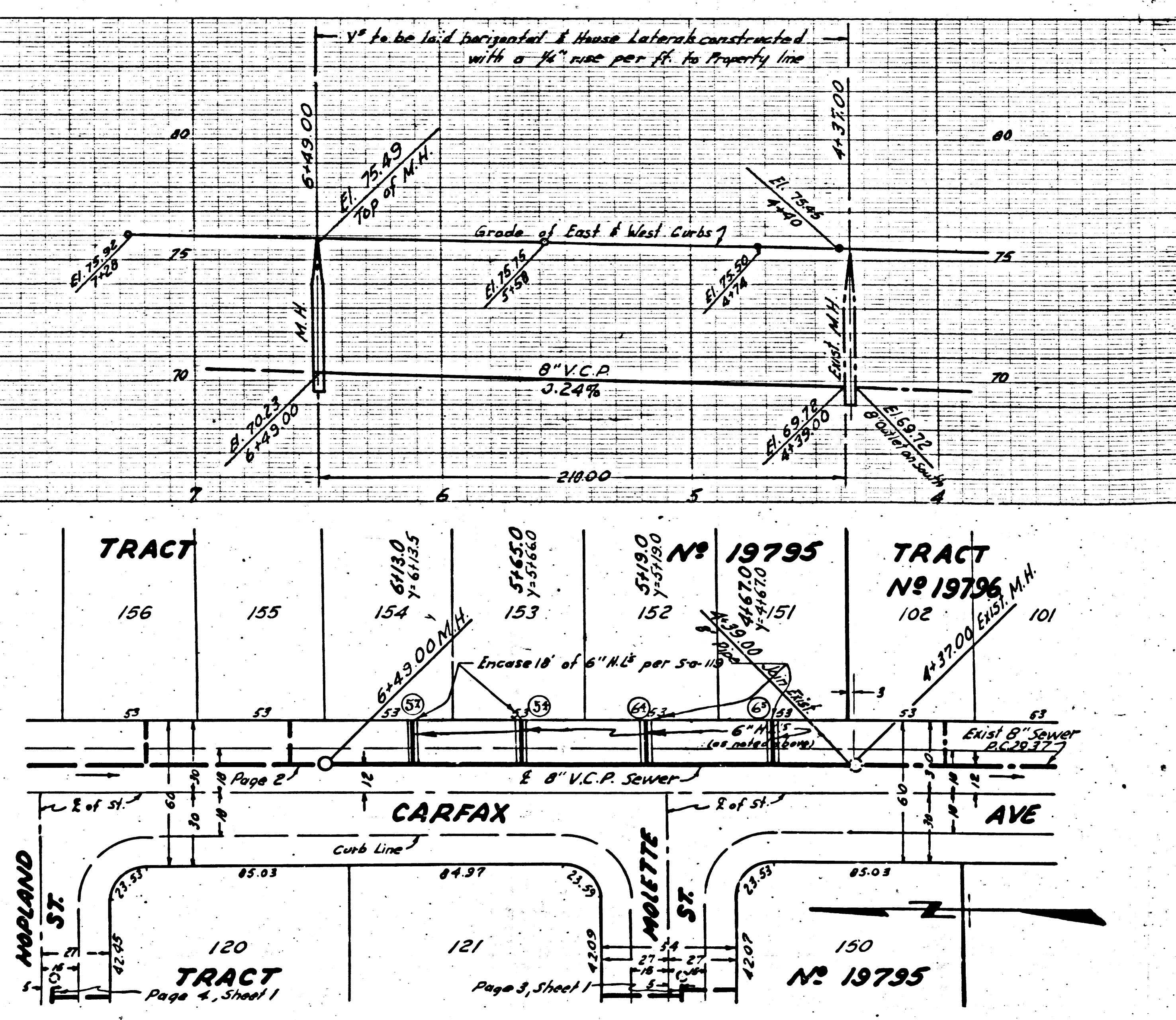


Page 2, Sheet 1

Page 2
3009
0384.81

FOR
MS

18,518



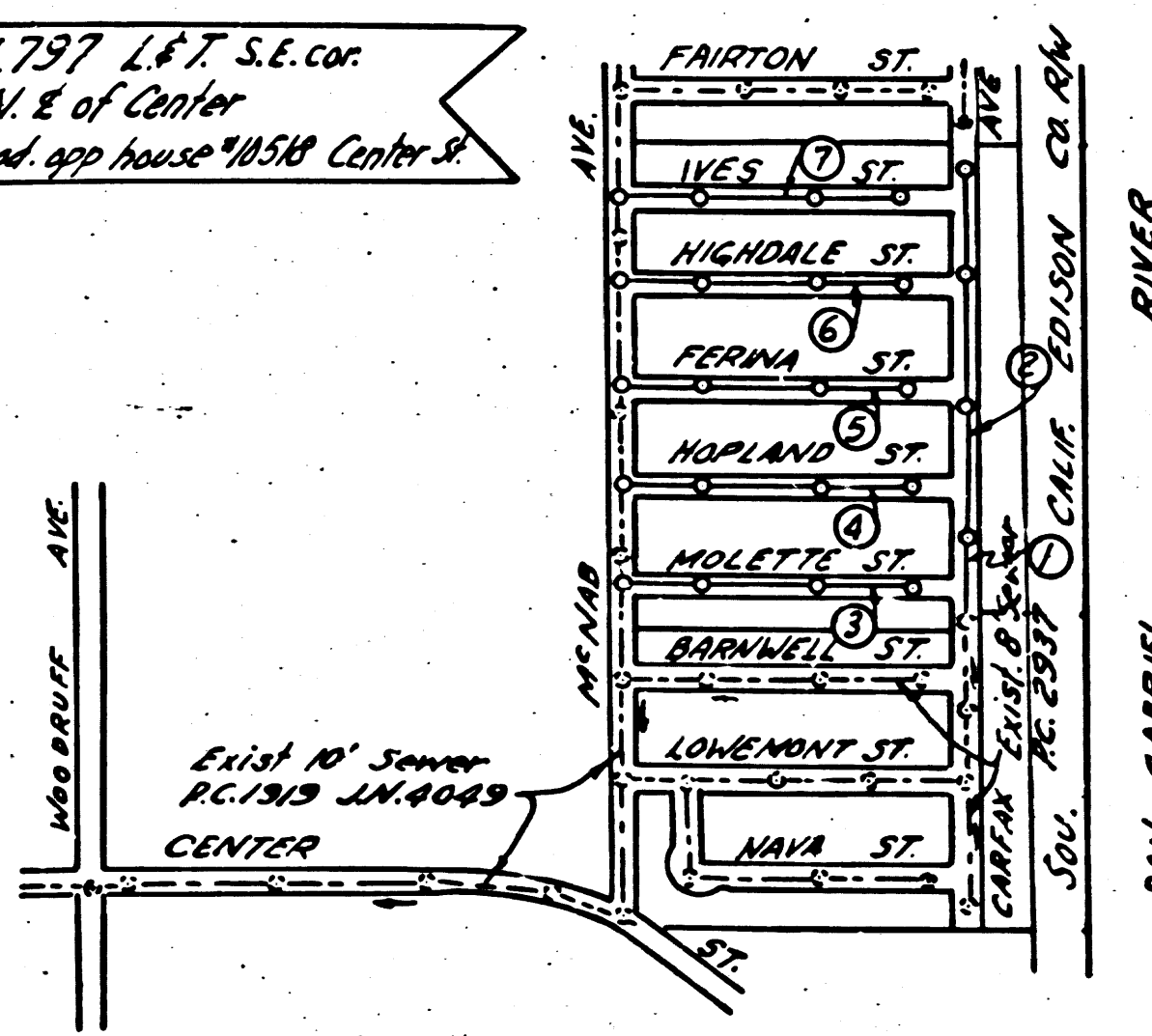
Trim Line 1

BELFLOWER BLDG DIST. NO 4

- NOTE:
Provide stakes on the property lines or property lines produced at right angles to the sewer line at the center line of each manhole.
No representative of the County Engineer will survey or layout any portion of the work. The owner or his authorized representative shall furnish the County Engineer with grade sheets and stations for all house laterals and Y branches and shall provide stakes for them at their proper locations with stationing plainly marked. Any change in location shall be requested in writing by the owner or his representative.
No revisions shall be made in these plans without the approval of the County Engineer.
1. Use standard manhole frames and covers, S-a-117, except as noted.
 2. Use standard strength pipe except as noted.
 3. Use joint compound for all vitrified clay pipe joints, per Spec's, Sec. 31
 4. Resurface all trench within paved area to meet L.A. County Road Dept. or Calif. State Highway Dept. requirements in accordance with permit.
 5. Encase four feet of sewer at points of interference with poles, S-a-119.
 6. House laterals to be constructed with inverts at property line.....feet below curb grade except as noted.
 7. All structures shall be brick sewer structures, S-a-104, except as noted.
 8. Manhole tops in unimproved Rights-Of-Way to be 6" above finish grade.
 9. For allowable leakage test, use Formula No. 1, Spec's, Sec. 51.

B.M. SY 2611 El. 74.797 L.F.T. S.E. cor. conc. headwall 1'-25" N.E. of center ST 215' E.E. Chicago Ave. prod. app. house 1958 Center 2

SHEET	PAGES
1	1-4
2	5-7



NO CHARGE FOR CONNECTIONS
[Signature]

PROFILE, ALIGNMENT AND GRADE OF
SANITARY SEWERS
TO BE CONSTRUCTED IN
TRACT NO 19795

Page 1
P.C. 3009
J.N. 0384.81
18,517

PRIVATE CONTRACT NO. 3009
W. S. 33
SHEET 1 OF 2 SHEETS
Scale: VERT. 1"=4'
HORIZ. 1"=40'
MARCH 1954
PREPARED IN THE OFFICES OF
BARCLAY SURVEYING COMPANY
FOR LEGEND SEE PLAN NO. S-a-64

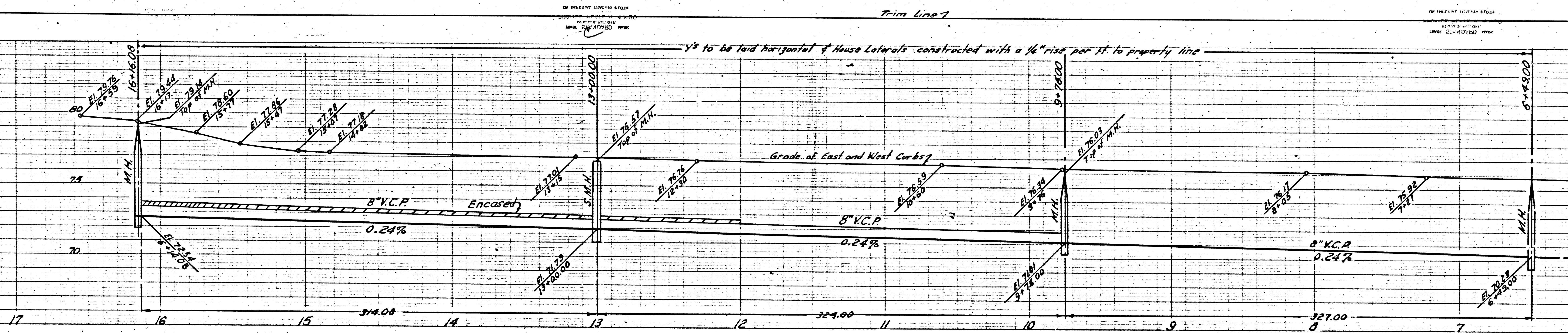
NOTE:
Grades to which this improvement is to be constructed are shown on plans and profiles. Grade points for top of curbs, center line of streets, or center line of alleys are shown by circles on profiles. At all points between designated points the grade shall be established so as to conform to a straight line drawn between said designated points.
Elevations are in feet above U.S.C.S. datum or mean sea level.
This drawing and the data hereon are hereby made a part of the specifications.
Work shall be constructed according to specifications on file in the office of the County Engineer and shall be prosecuted only in the presence of the County Engineer.
Before work can be started, the contractor must obtain a permit to excavate in County streets from the L.A. County Road Dept., 108 W. 2nd St. and make a deposit with the County Engineer, 733 L.A. County Engineering Building, sufficient to cover the cost of construction inspection and record plans.
Approval of this plan by the County of Los Angeles does not constitute a representation as to the accuracy of the location of or the existence or non-existence of any underground utility, pipe, or structure within the limits of this project. This note applies to all sheets.
If work is to be done in a State Highway, a permit must be obtained from the State of California, Division of Highways, 120 South Spring Street.

COUNTY OF LOS ANGELES, CALIFORNIA
Approved, William J. Fox, County Engineer
Approved, A. M. Rawn
CHIEF ENGR. OF SAN. DIST. NO. 2
By [Signature] Office Engineer
Checked by [Signature] Office of County Engineer, Reg. C. E. No. 5839

TRACT NO 19795
P.C. 3009
J.N. 0384.81
18,517

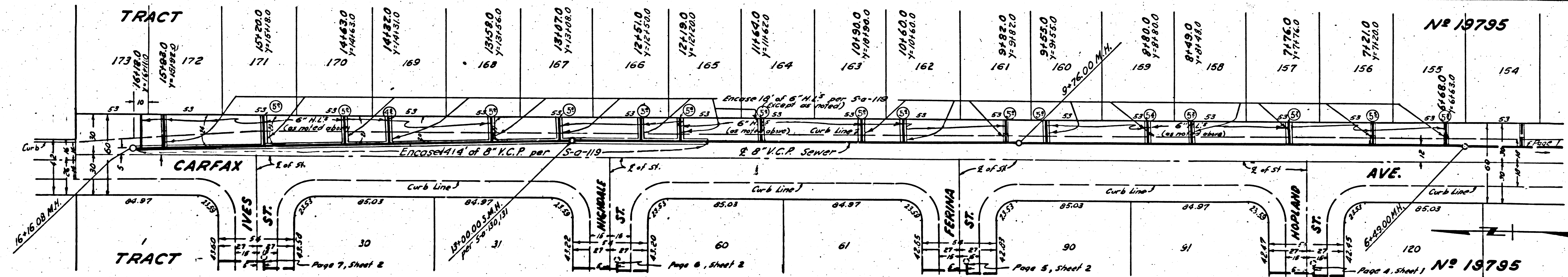
NO CHARGE FOR CONNECTIONS

18,519



NO CHARGE FOR CONNECTIONS

18,518

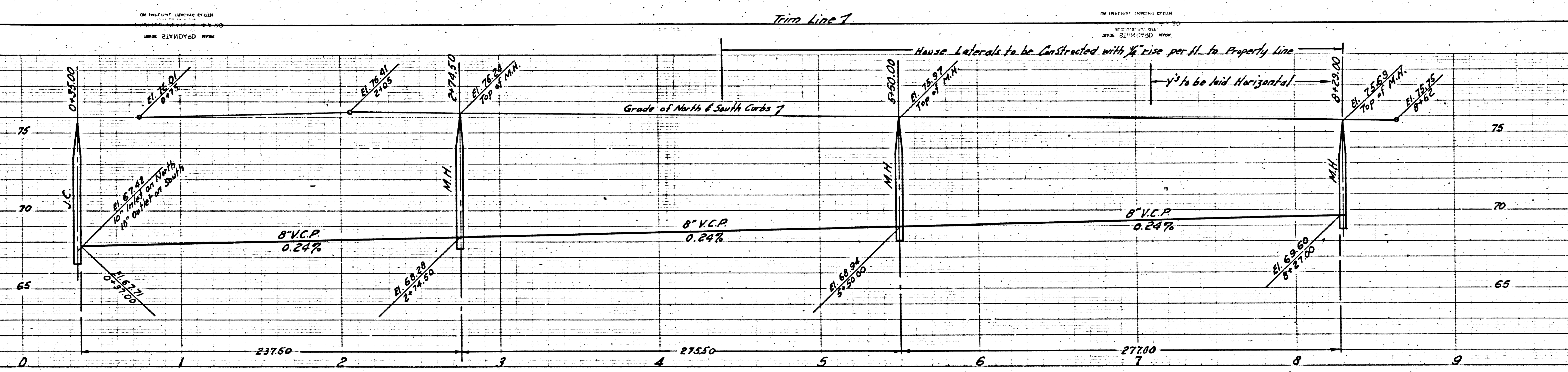


Trim Line

Page 4
P.C. 3003
J.N. 0984.81

NO CHARGE FOR CONNECTIONS

18,520

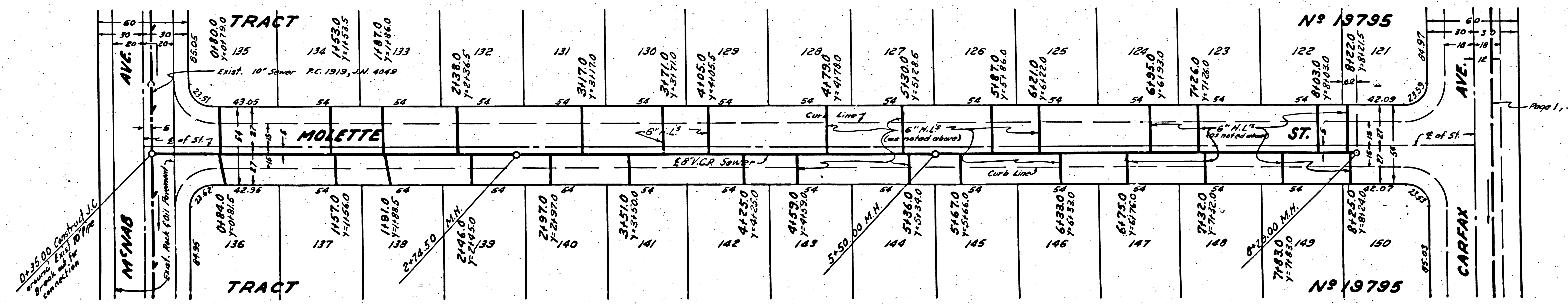


Page 3
P.C. 3003
J.N. 0984.81

NO CHARGE FOR CONNECTIONS

18,519

Page 2, Sheet 1



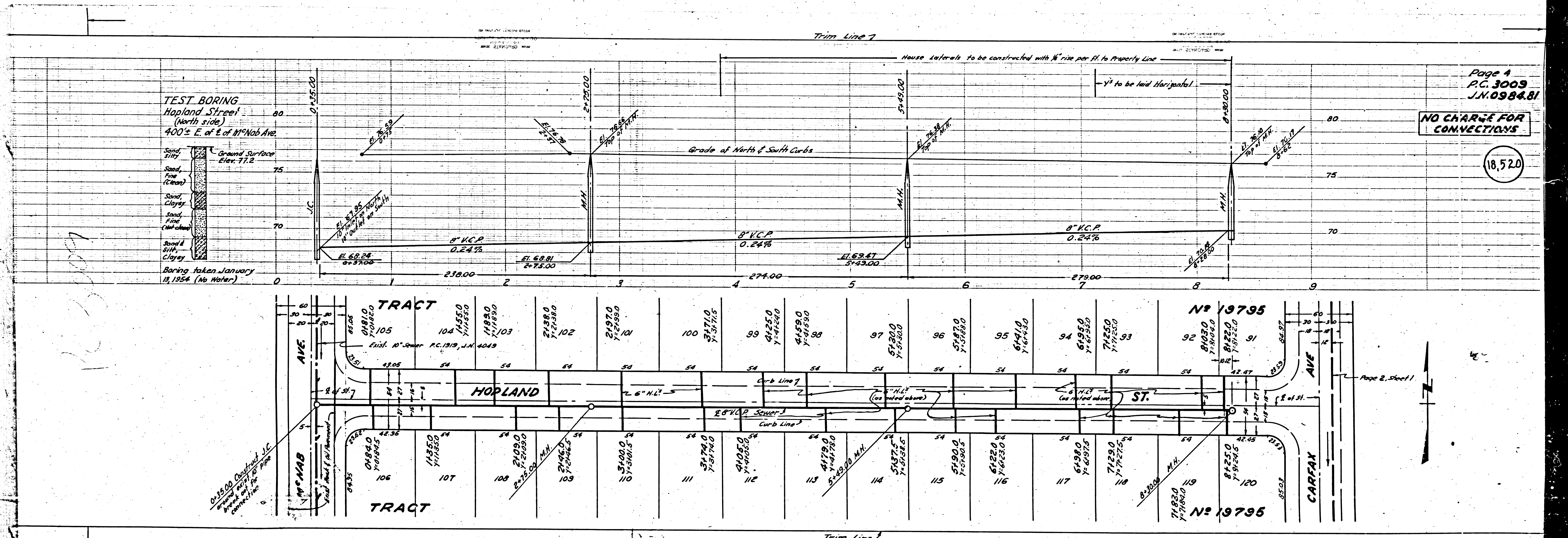
Page 1, Sheet 1

TEST BORING
 Hopland Street
 (North side)
 400'± E. of E. of McNab Ave.

Ground Surface
 Elev. 77.2

Sand, Fine
 Sand, Fine (Clean)
 Sand, Clayey
 Sand, Fine (Clayey)
 Sand & Gravel, Clayey

Boring taken January
 13, 1954 (No Water)



Page 4
 P.C. 3009
 J.N. 0984.81

NO CHARGE FOR
 CONNECTIONS

18,520

62-3009

0.3500
 Overhead I.C.
 above ground
 20' from
 centerline

Page 2, Sheet 1

40