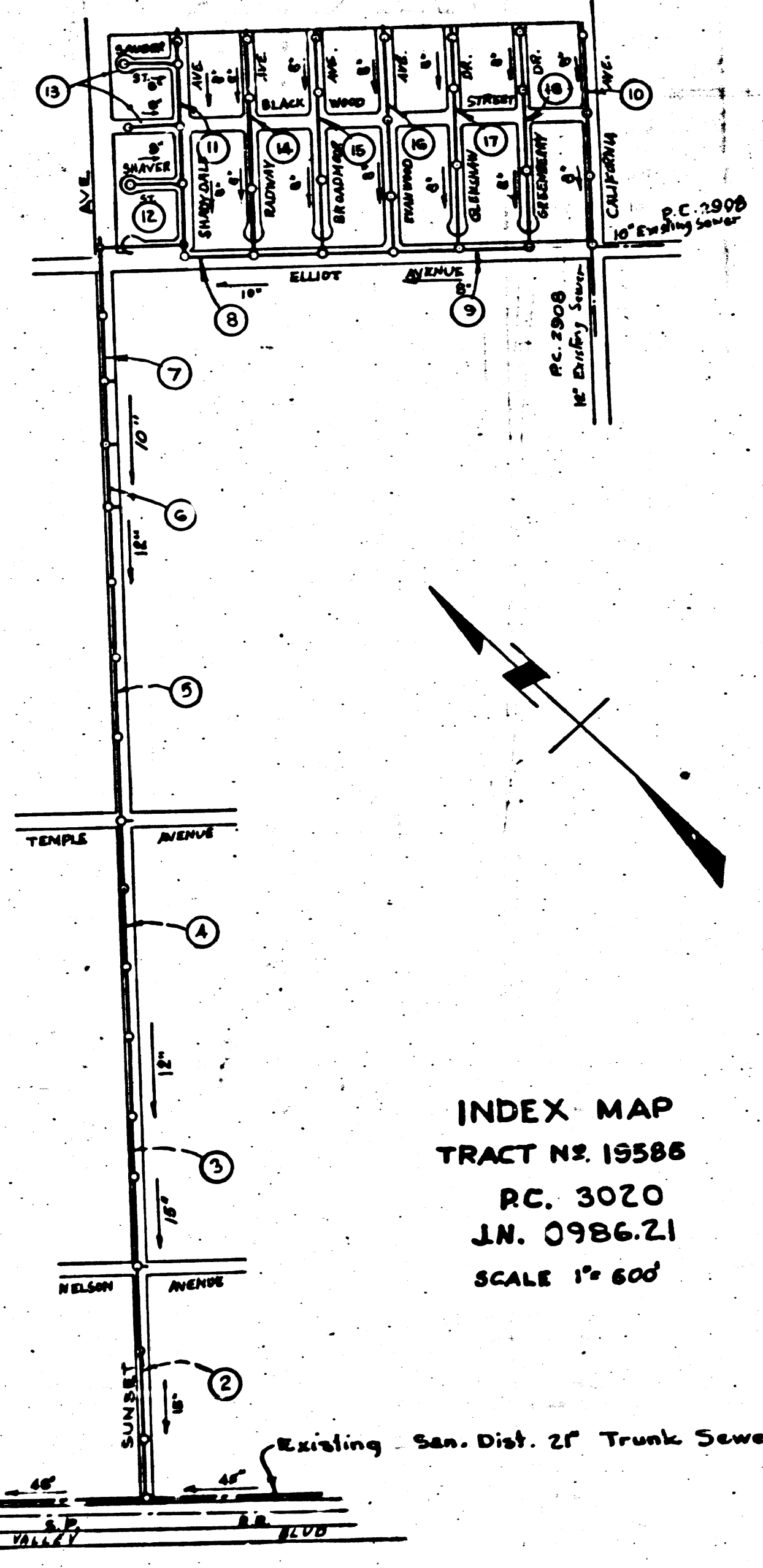


PC. 3020
PAGE 2

CHARGES
PAID

20,371



INDEX MAP
TRACT NO. 19586
PC. 3020
J.W. 0986-21
SCALE 1" = 600'

Checked 5-12-55 *M. R. ...*

Trim Line 7
PUENTE BLDG. DIST. NO. 2

- NOTE:**
Provide stakes on the property lines or property lines produced at right angles to the sewer line at the center line of each manhole.
No representative of the County Engineer will survey or layout any portion of the work.
The owner or his authorized representative shall furnish the County Engineer with grade sheets and stations for all house laterals and Y branches and shall provide stakes for them at their proper locations with stationing plainly marked. Any change in location shall be requested in writing by the owner or his representative.
No revisions shall be made in these plans without the approval of the County Engineer.
1. Use standard manhole frames and covers, S-a-1127.
 2. Use standard strength pipe except as noted.
 3. Use cement mortar for all vitrified clay pipe joints.
 4. Resurface all trench within paved area to meet L.A. County Road Dept. or California State Highway Dept. requirements in accordance with permit.
 5. Encase four feet of sewer at points of interference with poles, S-a-1119.
 6. House laterals to be constructed with inverts at property line 6' feet below curb grade except as noted.
 7. All structures shall be brick sewer structures, S-a-104.
 8. For allowable leakage test, use Formula No. 1, Spec'k, Sec. 81.
 9. Manhole tops in unimproved Rights-Of-Way to be 6" above finish grade.

TABLE

| SHEET NR. | PAGES |
|-----------|---------|
| 1 | 1 - 5 |
| 2 | 6 - 10 |
| 3 | 11 - 15 |
| 4 | 16 - 18 |

Before breaking into any existing structure and before final acceptance of this work, the Sanitation District should be notified in order that required inspection may be made.

COLLECT CHARGES AS INDICATED
L. Carter 11-19-54

**PROFILE ALIGNMENT AND GRADE OF
SANITARY SEWERS
TO BE CONSTRUCTED IN**

TRACT NO. 19586

PRIVATE CONTRACT NO. 3020
W. S. 38
4 SHEETS

Scale: VERT. 1" = 4'
HORIZ. 1" = 40'
AUGUST 1954
PREPARED IN THE OFFICES OF

NATIONAL ENGINEERING & SURVEYING SERVICE

Edmund J. Epperson Reg. C. E. No. 5828
FOR LEGEND SEE PLAN NO. S-a-64

NOTE:
Grades to which this improvement is to be constructed are shown on plans and profiles. Grade points for top of curbs, center line of streets, or center line of alleys are shown by circles on profiles. At all points between designated points the grade shall be established so as to conform to a straight line drawn between said designated points.
Elevations are in feet above U.S.G.S. datum or mean sea level.
This drawing and the data hereon are hereby made a part of the specifications.
Work shall be constructed according to specifications on file in the office of the County Engineer and shall be prosecuted only in the presence of the County Engineer.
Before work can be started, the contractor must obtain a permit to excavate in County streets from the L.A. County Road Dept., 108 W. 2nd St. and make a deposit with the County Engineer, 733 L.A. County Engineering Building, sufficient to cover the cost of construction inspection and record plans.
Approval of this plan by the County of Los Angeles does not constitute a representation as to the accuracy of the location of or the existence or non-existence of any underground utility, pipe, or structure within the limits of this project. This note applies to all sheets.
If work is to be done in a State Highway, a permit must be obtained from the State of California, Division of Highways, 120 South Spring Street.

COUNTY OF LOS ANGELES, CALIFORNIA
Approved, William J. Fox, County Engineer
Approved, A. M. Rawn, CHIEF ENGR. CO. SAN. DIST. NO. 15
By *A.P. Collins* Sanitation Engineer
Checked by *R. K. ...* 1-4-55
Office of County Engineer, Reg. C. E. No. 7842

PC. 3020
J.W. 0986-21
PAGE 1

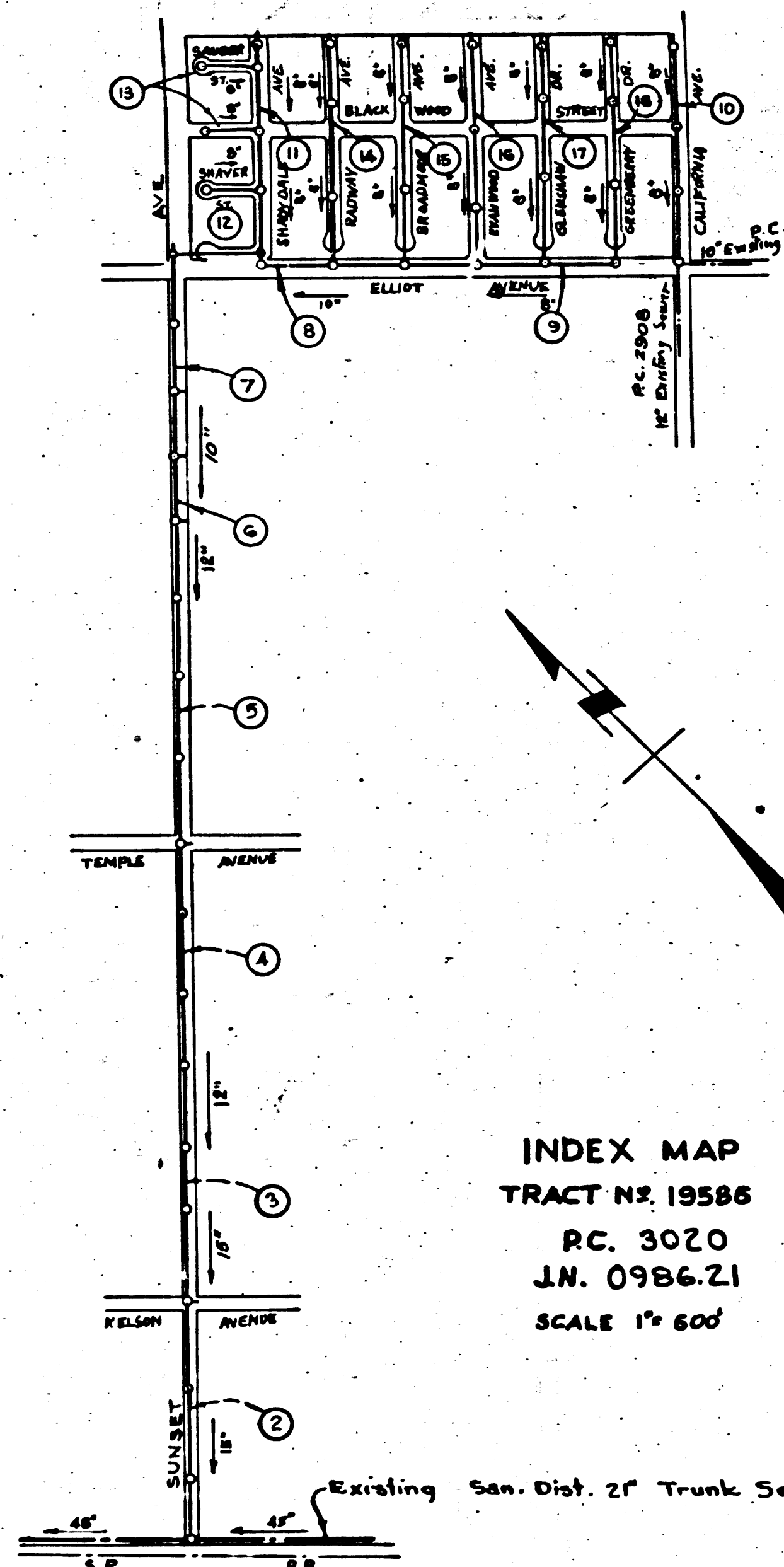
20,370

TRACT NO. 19586

P.C. 3020
PAGE 2

CHARGES
NOTED

20,371



INDEX MAP
TRACT NO. 19586
RC. 3020
J.N. 09B6.21
SCALE 1" = 60'

B.M. S.G. 1101
Elev. = 325.916
Lead 6" dia. 3" W. Cor. Conc.
base water pump ± 110' E. & E.
Sunset Ave. ± 1000' N. of
Elliot Ave.

Trim Line 7
PUEENTE BLDG. DIST. NO. 2

- NOTE:**
Provide stakes on the property lines or property lines produced at right angles to the sewer line at the center line of each manhole.
No representative of the County Engineer will survey or layout any portion of the work.
The owner or his authorized representative shall furnish the County Engineer with grade sheets and stations for all house laterals and Y branches and shall provide stakes for them at their proper locations with stationing plainly marked. Any change in location shall be requested in writing by the owner or his representative.
No revisions shall be made in these plans without the approval of the County Engineer.
1. Use standard manhole frames and covers, S-a-117.
 2. Use standard strength pipe except as noted.
 3. Use cement mortar for all vitrified clay pipe joints.
 4. Resurface all brack within paved area to meet L.A. County Road Dept. or California State Highway Dept. requirements in accordance with permits.
 5. Excise four feet of sewer at points of interference with poles, S-a-119.
 6. House laterals to be constructed with inverts at property line _____ feet below curb grade except as noted.
 7. All structures shall be brick sewer structures, S-a-104.
 8. For allowable leakage test, use Formula No. _____, Spec's, Sec. 51.
 9. Manhole tops in unimproved Rights-Of-Way to be 6" above finish grade.

TABLE

| SHEET | NO. | PAGES |
|-------|-----|---------|
| 1 | | 1 - 5 |
| 2 | | 6 - 10 |
| 3 | | 11 - 15 |
| 4 | | 16 - 18 |

Before breaking into any existing structure
and before final acceptance of this work,
Sanitation District should be notified
in order that required inspection may be made.

COLLECT CHARGES
AS INDICATED

L. Carter 11-19-51

dated 5-12-55 M. H. ...

PROFILE, ALIGNMENT AND GRADE OF
SANITARY SEWERS
TO BE CONSTRUCTED IN

TRACT NO. 19586

PRIVATE CONTRACT NO. 3020
W. S. 38
4 SHEETS

Scale: VERT. 1" = 4'
HORIZ. 1" = 40' AUGUST 1954

PREPARED IN THE OFFICES OF
NATIONAL ENGINEERING & SURVEYING SERVICE

William J. Fox
Reg. C. E. No. 5828

FOR LEGEND SEE PLAN NO. S-a-64

NOTE:

Grades to which this improvement is to be constructed are shown on plans and profiled. Grade points for top of curbs, center line of streets, or center line of alleys are shown by circles on profiles. At all points between designated points the grade shall be established so as to conform to a straight line drawn between said designated points.

Elevations are in feet above U.S.G.S. datum or mean sea level.
This drawing and the data hereon are hereby made a part of the specifications.
Work shall be constructed according to specifications on file in the office of the County Engineer and shall be prosecuted only in the presence of the County Engineer.

Before work can be started, the contractor must obtain a permit to excavate in County streets from the L.A. County Road Dept., 108 W. 2nd St. and make a deposit with the County Engineer, 733 L.A. County Engineering Building, sufficient to cover the cost of construction inspection and record plans.

Approval of this plan by the County of Los Angeles does not constitute a representation as to the accuracy of the location of or the existence or non-existence of any underground utility, pipe, or structure within the limits of this project. This note applies to all sheets.
If work is to be done in a State Highway, a permit must be obtained from the State of California, Division of Highways, 120 South Spring Street.

COUNTY OF LOS ANGELES, CALIFORNIA

Approved, William J. Fox, County Engineer

William J. Fox
Sanitation Engineer

Approved, A. M. Rawn
CHIEF ENGR. CO. SAN DIST. NO. 15

A. M. Rawn
City Engineer

Checked By: *R. K. ...*
Office of County Engineer, Reg. C. E. No. 7860

P.C. 3020
J.N. 09B6.21
PAGE 1

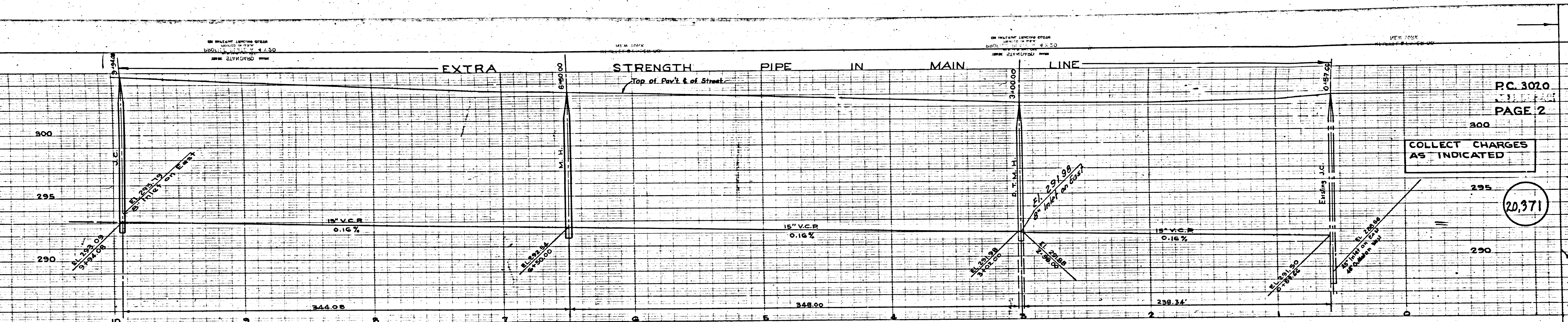
20,370

Trim Line 7
TRACT NO. 19586

TRACT NO. 19586

PC 3020
PAGE 3

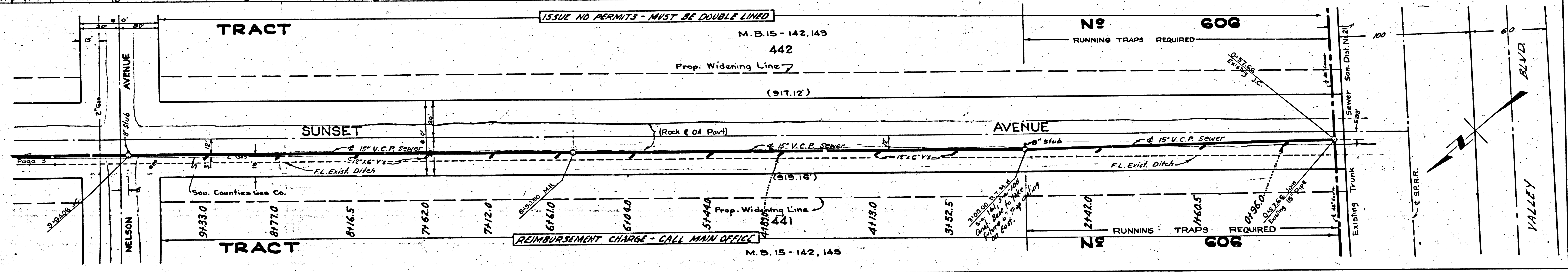
20,372



PC 3020
PAGE 2

COLLECT CHARGES AS INDICATED

20,371



(14)

P.C. 3020
PAGE 4

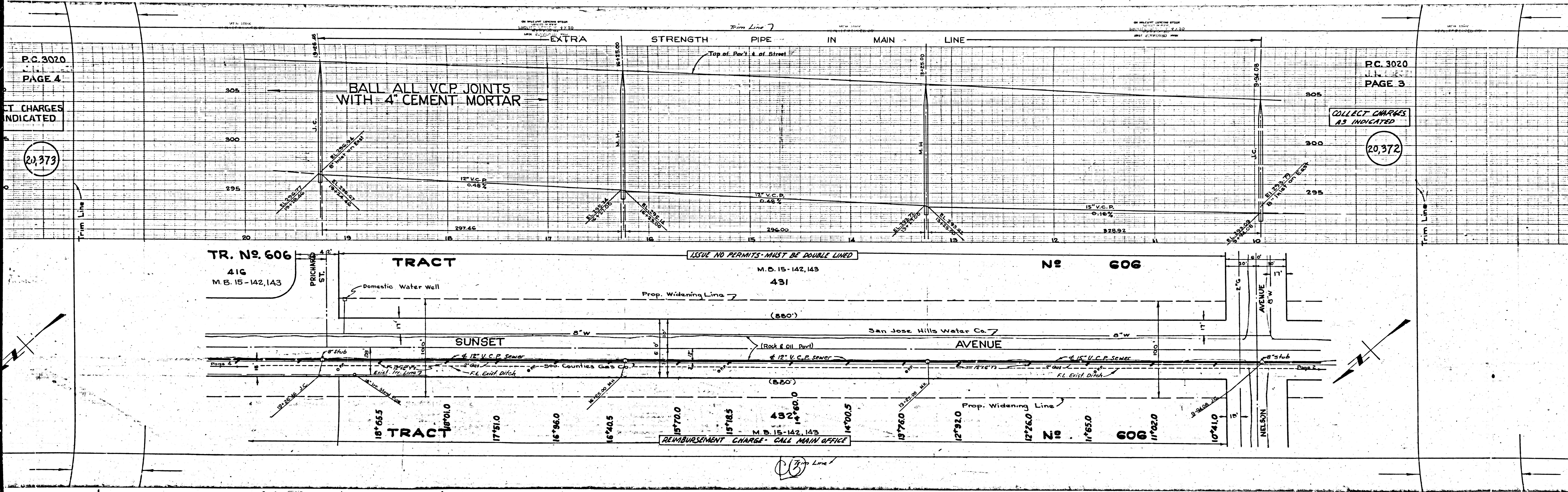
ALL CHARGES INDICATED

20,373

P.C. 3020
PAGE 3

COLLECT CHARGES AS INDICATED

20,372

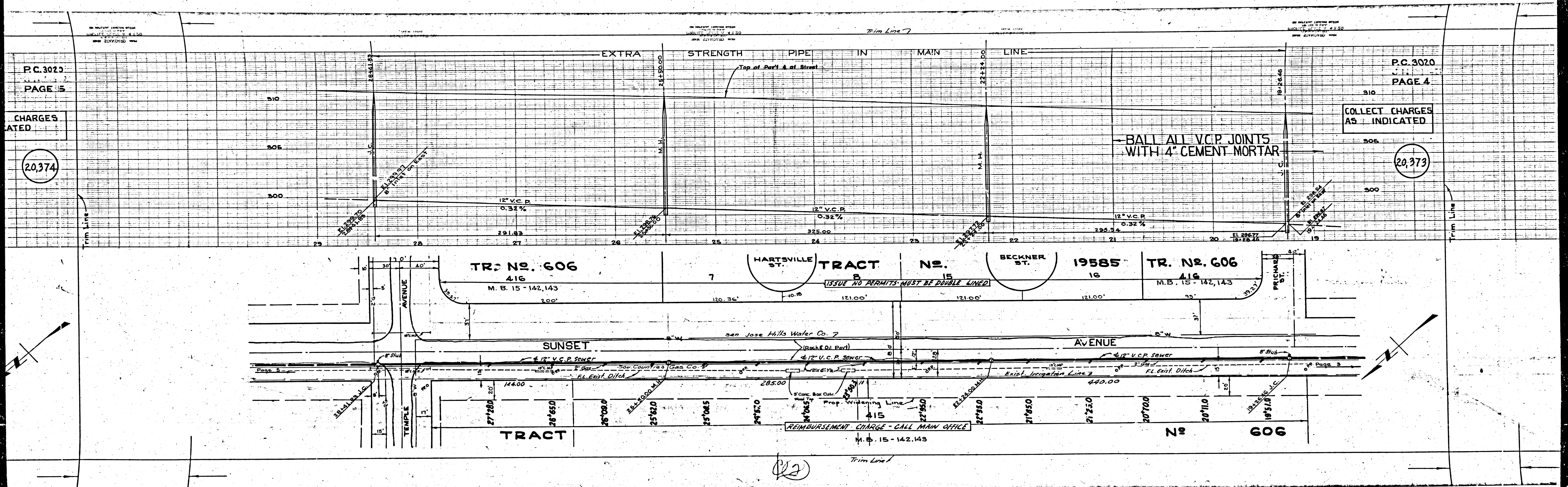


P.C. 3023
PAGE 5

P.C. 3020
PAGE 4

CHARGES
ATED
(20,374)

COLLECT CHARGES
AS INDICATED
(20,373)

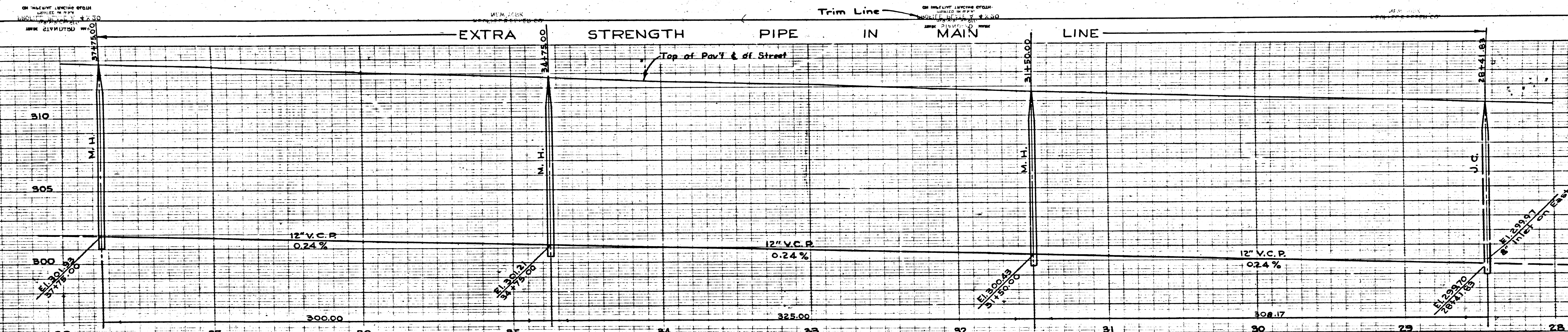


TRACT N 1228E

15.380 M.L.
P.C. 3020

①

P.C. 3020



P.C. 3020
PAGE 5

COLLECT CHARGES
AS INDICATED

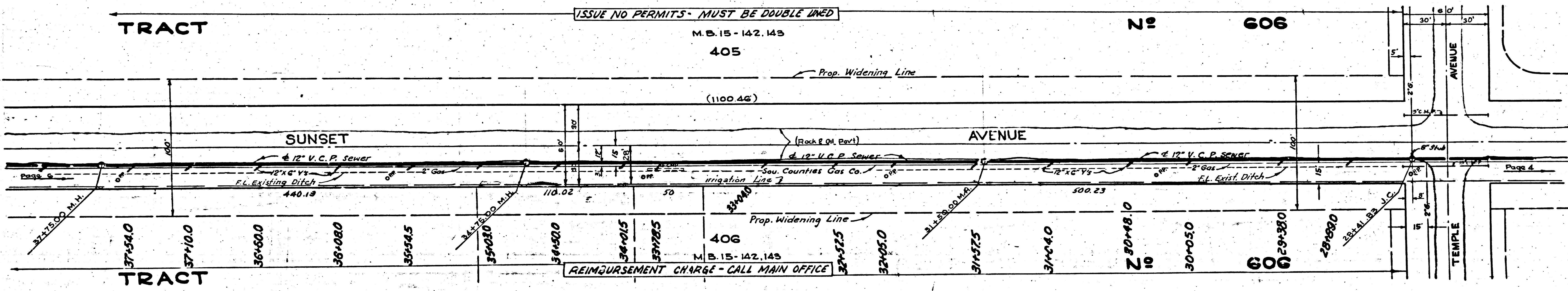
20,374

TRACT

ISSUE NO PERMITS - MUST BE DOUBLE LINED

TRACT N 606

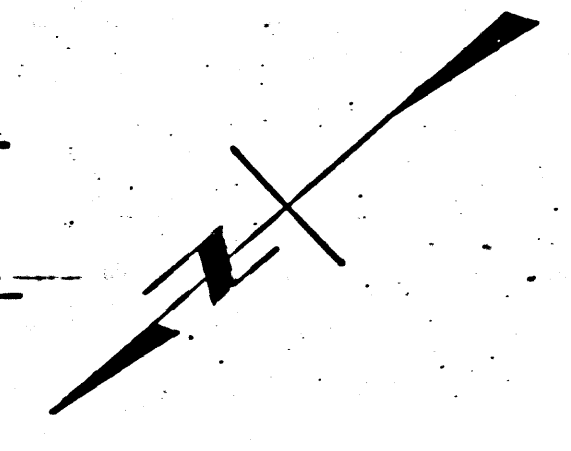
M.B. 15-142.145
405

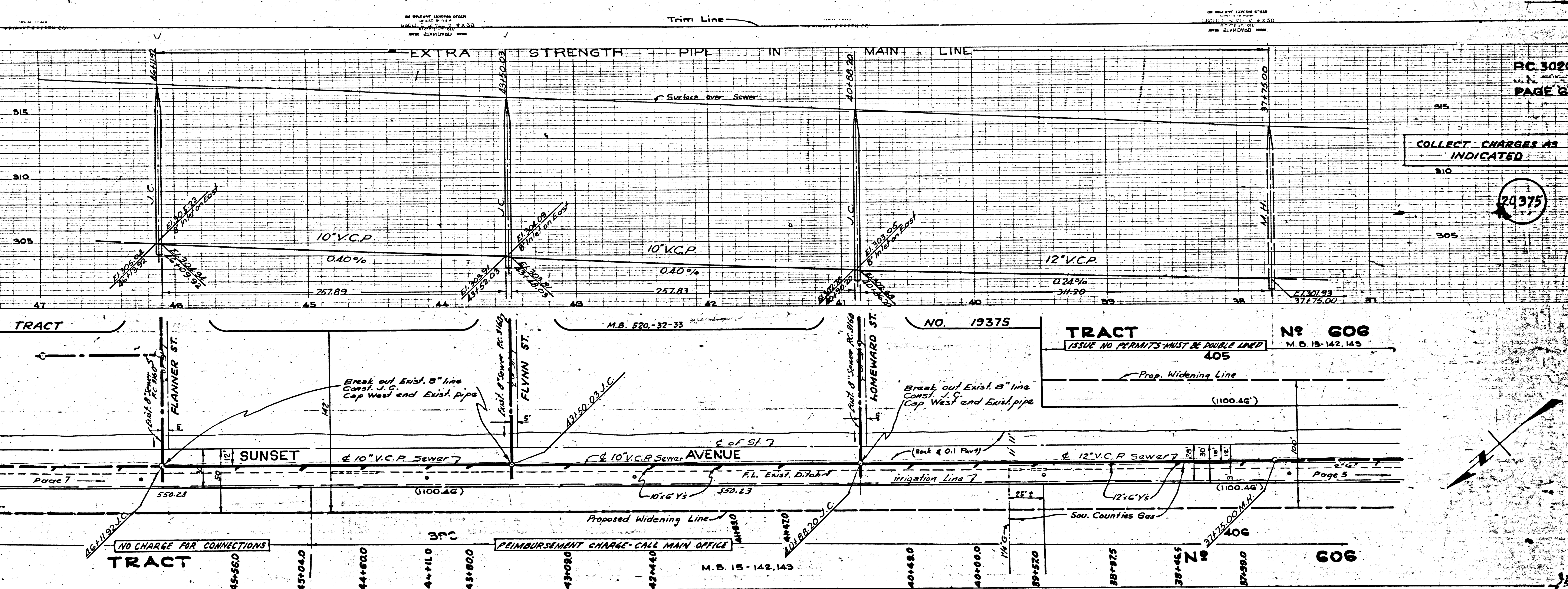


TRACT

REIMBURSEMENT CHARGE - CALL MAIN OFFICE

Trim Line





RC 3020
PAGE 6

COLLECT CHARGES AS INDICATED

20375

TRACT NO. 19375

TRACT NO. 606

TRACT NO. 19375

TRACT NO. 606

5

EXTRA STRENGTH PIPE IN MAIN LINE

P.C. 3020
PAGE 7

COLLECT CHARGES AS INDICATED

20,376

TRACT NO. 1958C
25

TRACT NO. 606
LOT 393
M.B. 15-142, 143

TRACT NO. 19375
M.B. 520, 32, 33

SUNSET AVENUE

AVENUE

TRACT

TRACT

No 606

Trim Line (41)

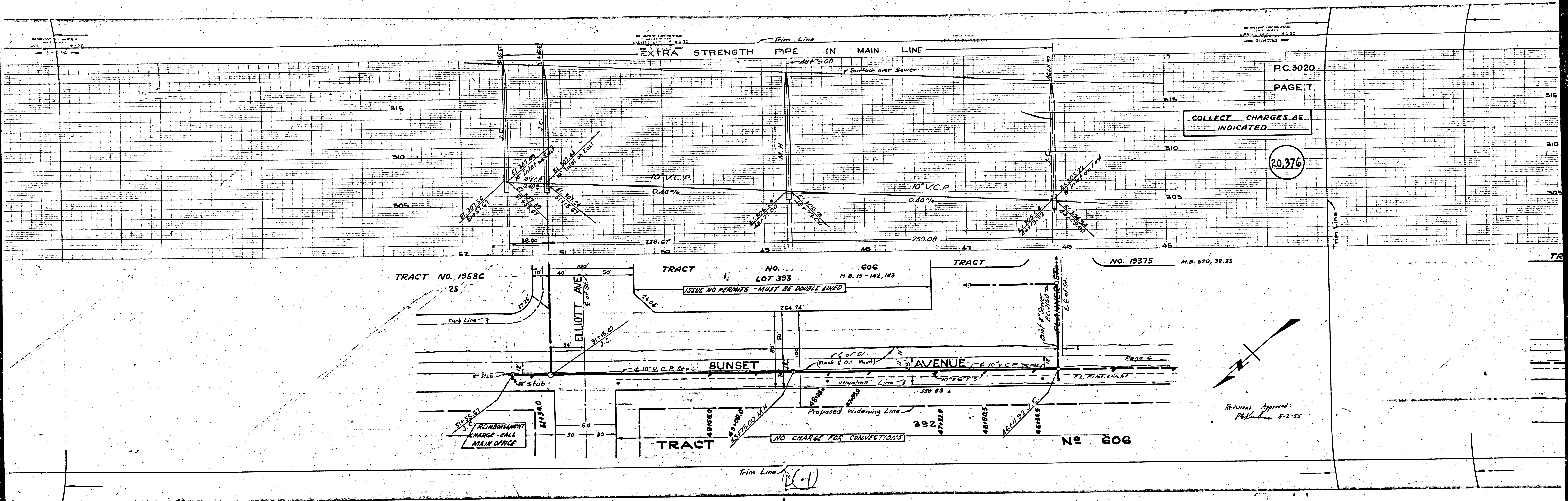
Revisions Approved:
P.R. 5-2-55

REIMBURSEMENT
CHARGE - CALL
MAIN OFFICE

NO CHARGE FOR CONNECTIONS

ISSUE NO PERMITS - MUST BE DOUBLE LINED

Page 6



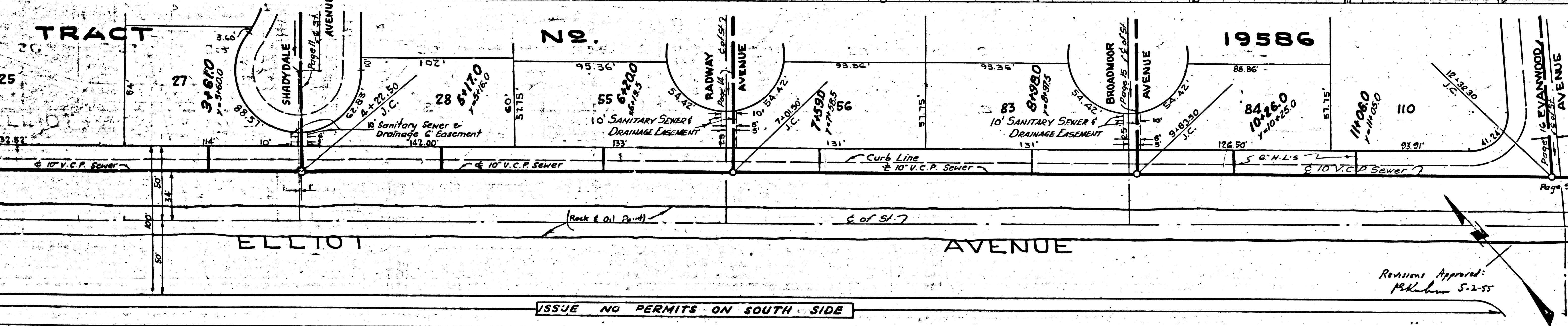
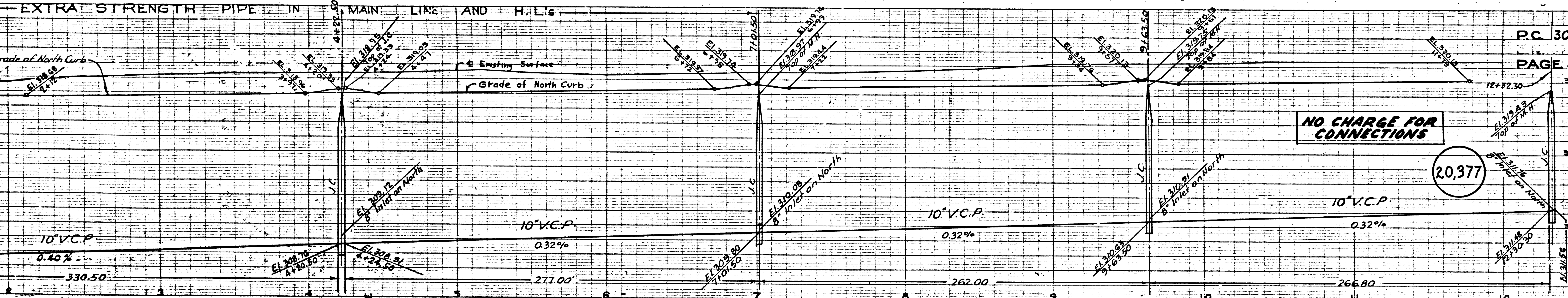
EXTRA STRENGTH PIPE IN MAIN LINE AND H.L.'s

P.C. 3020

PAGE 8

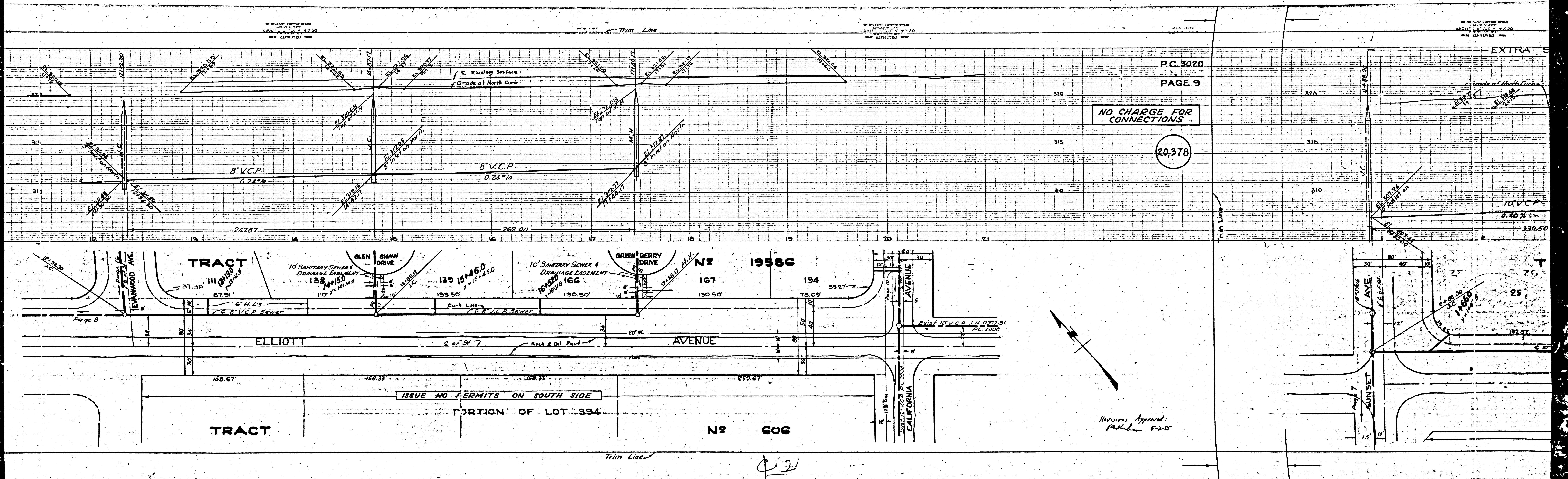
NO CHARGE FOR CONNECTIONS

20,377



Revisions Approved: M.K. 5-2-55

(13)



P.C. 3020
PAGE 9

NO CHARGE FOR CONNECTIONS

20,378

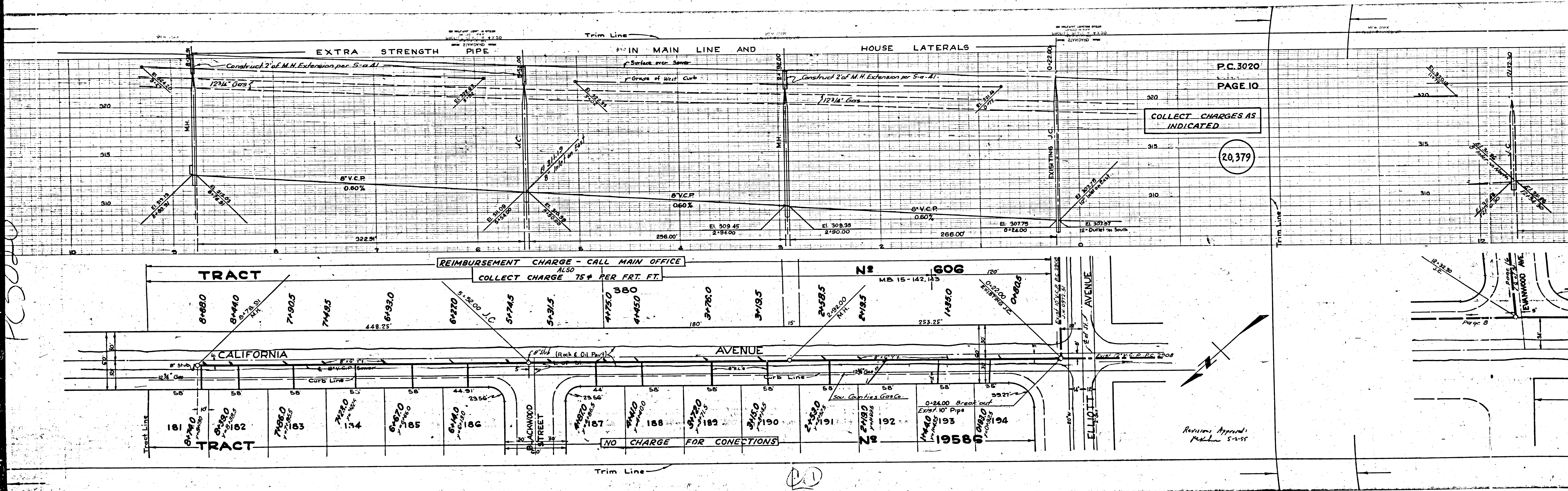
ISSUE NO PERMITS ON SOUTH SIDE
PORTION OF LOT 394

Revisions Approved:
M.H.L. 5-2-58

NO 606

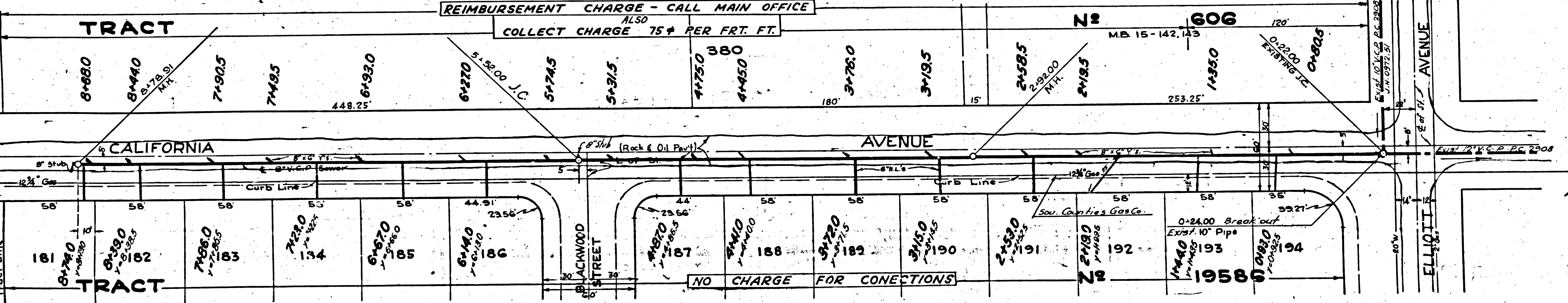
42

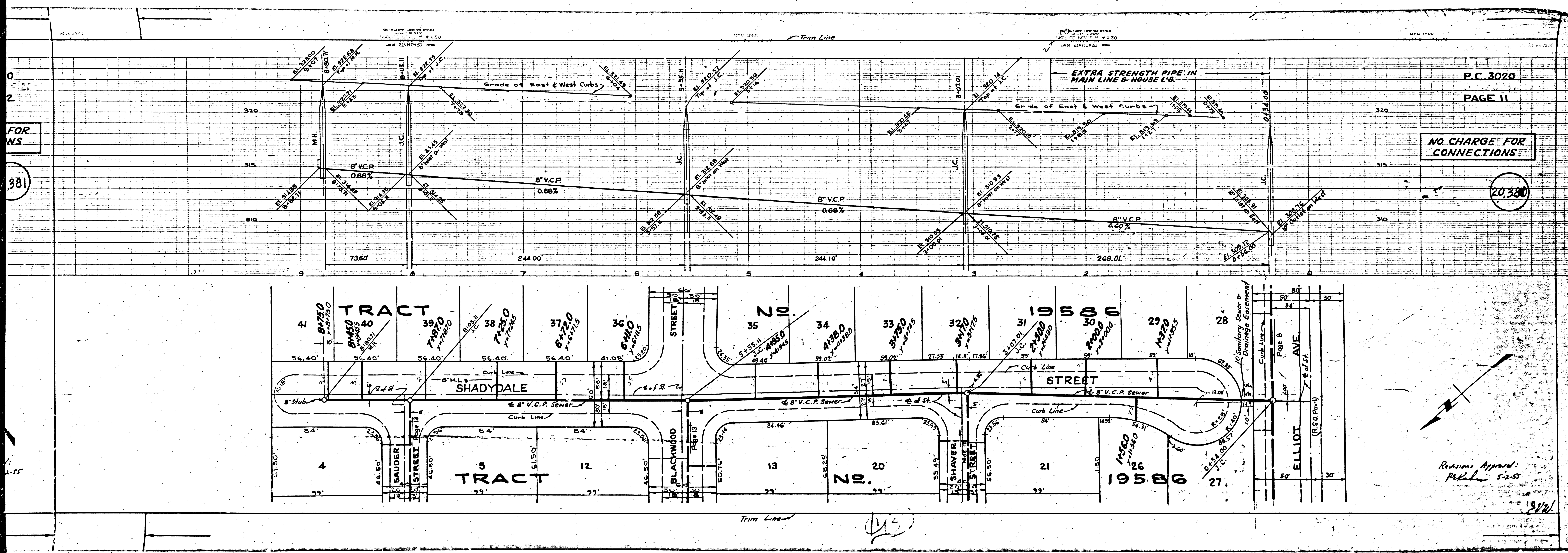
P.C.3020



P.C.3020
PAGE 10

COLLECT CHARGES AS INDICATED
20,379



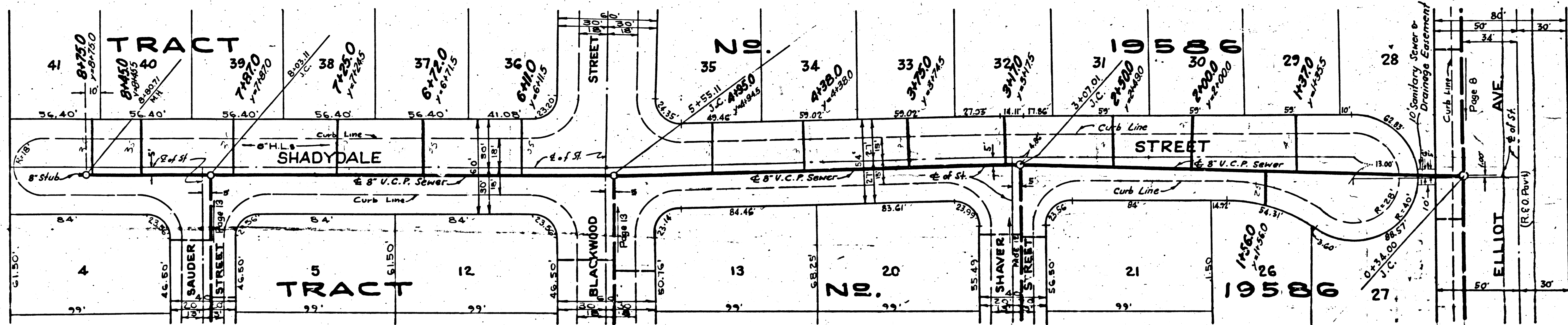


P.C. 3020
PAGE 11

NO CHARGE FOR CONNECTIONS

20,330

TRACT NO. 19586



Revised App'd.
5-2-58

P.C. 3020

⑤

3020
E 13
FOR
IONS
0,382

NEW 1985

ON PLANT, LOCUS FROM
DATE 11/11/85
BY 2194750

Trim Line

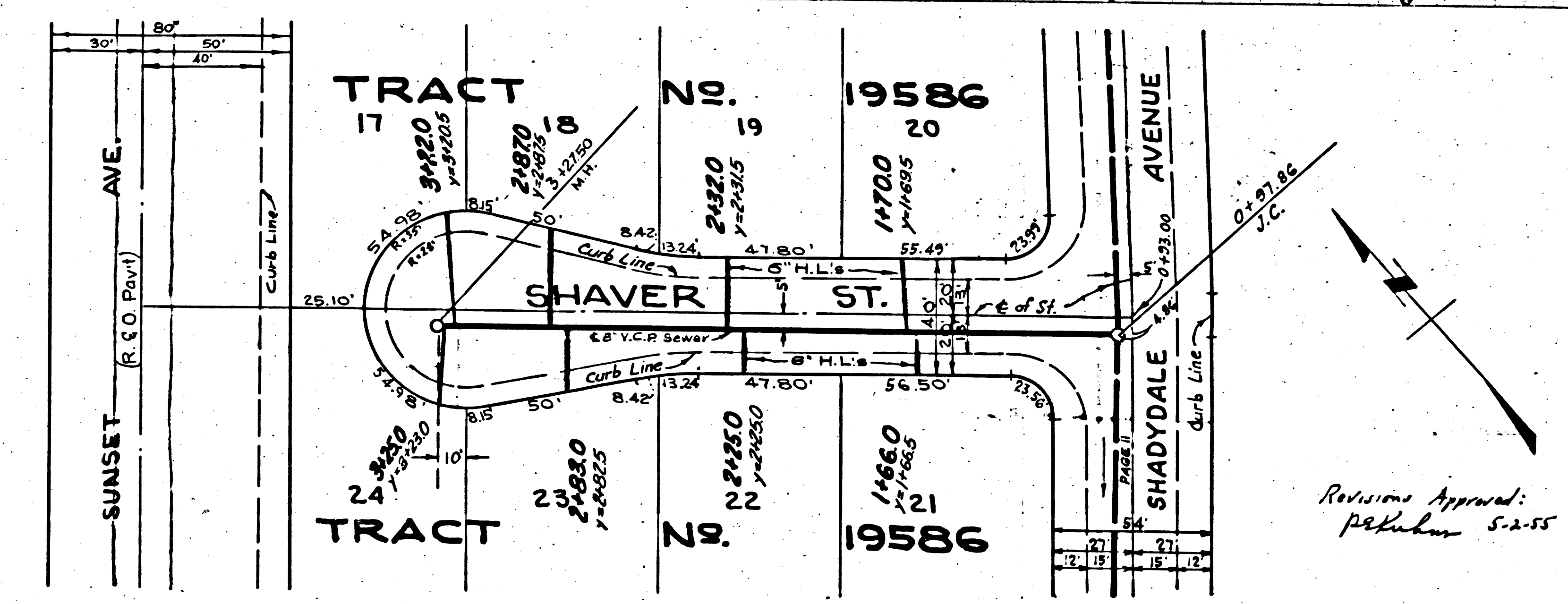
ON PLANT, LOCUS FROM
DATE 11/11/85
BY 2194750

NEW 1985

P.C. 3020
PAGE 12

NO CHARGE FOR
CONNECTIONS

0,381

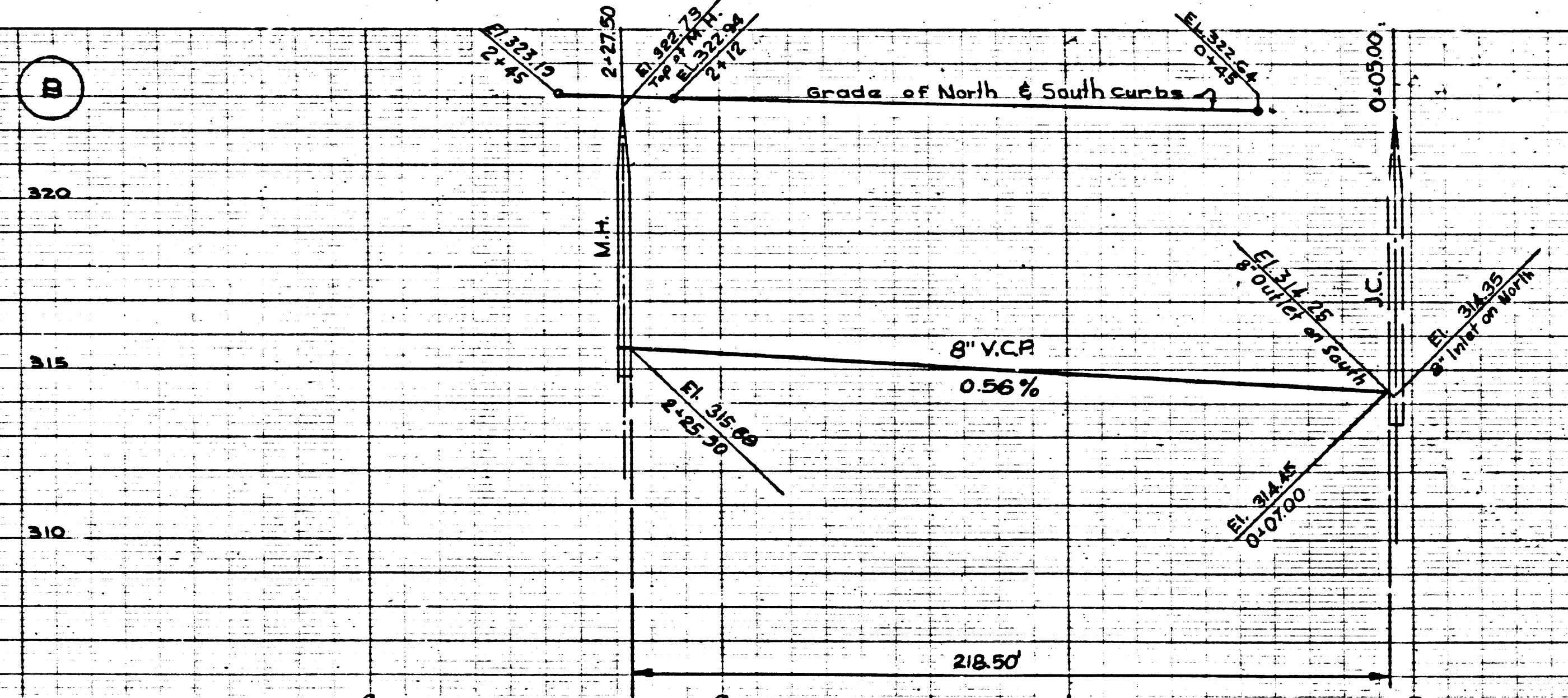


Trim Line

P.C. 3020
PAGE 14

NO CHARGE FOR CONNECTIONS

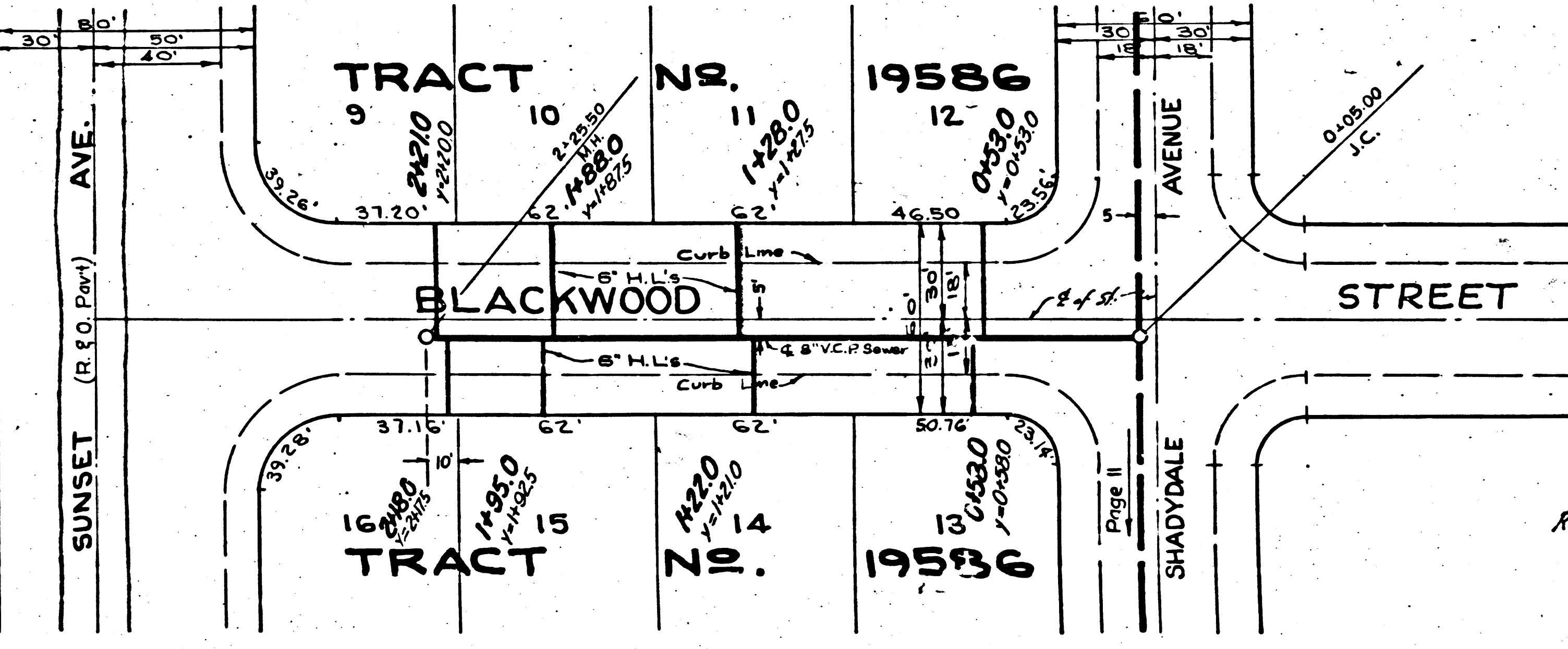
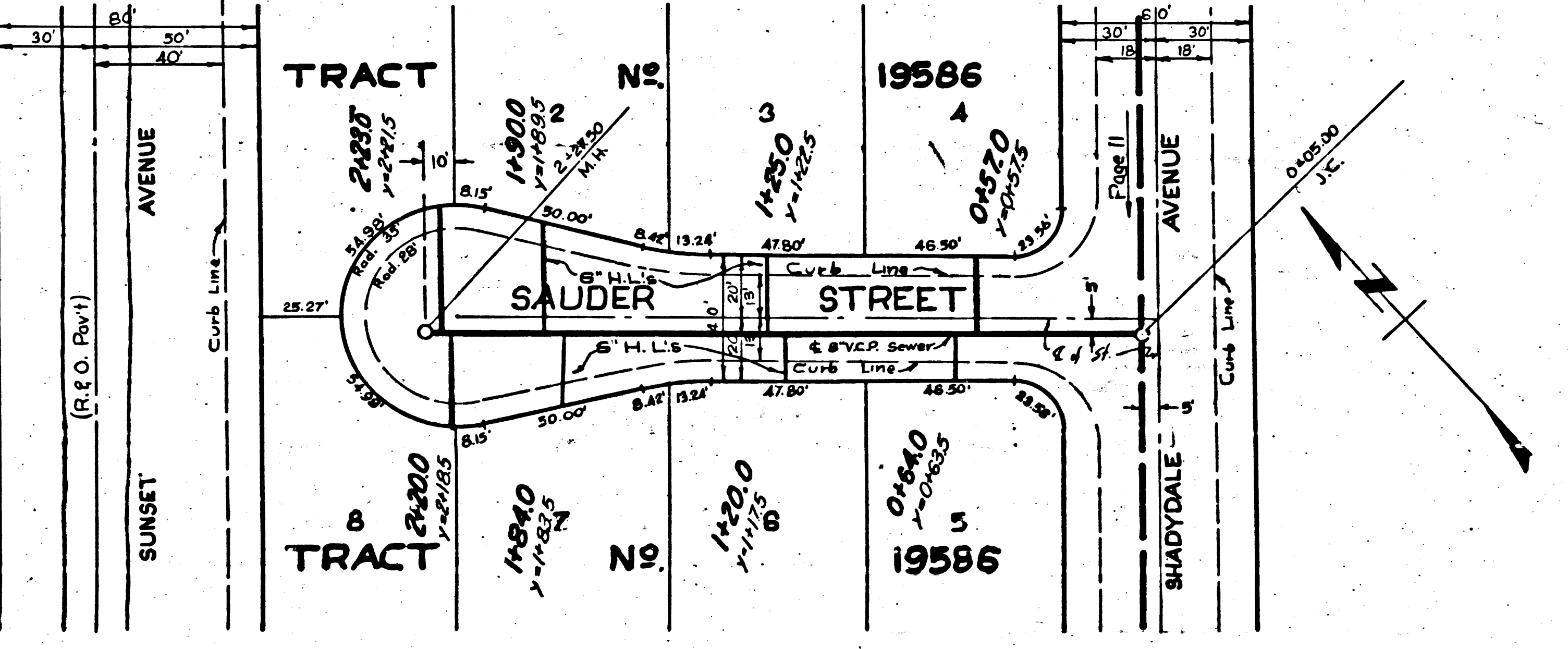
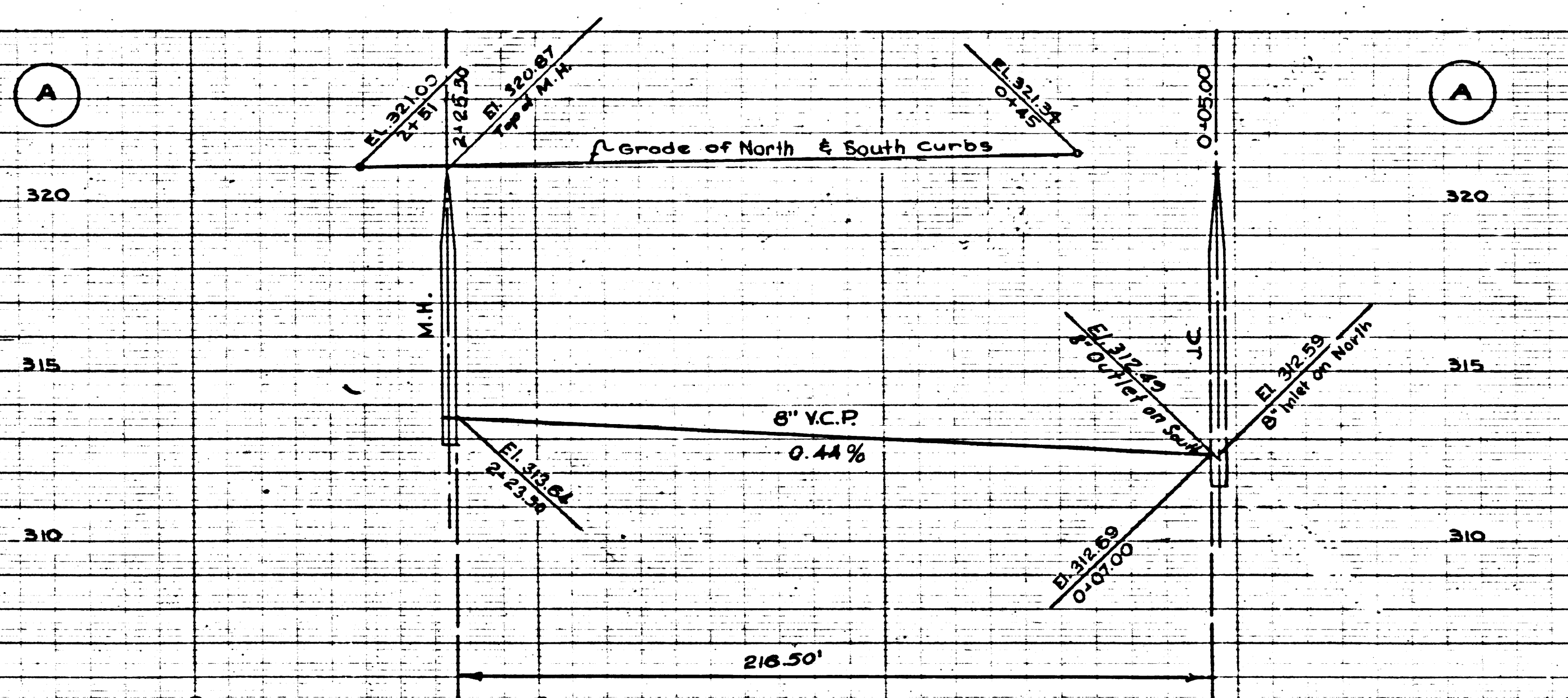
20,383



P.C. 3020
PAGE 13

NO CHARGE FOR CONNECTIONS

20,382



Approved: 5-2-55

Revisions Approved: 5-2-55

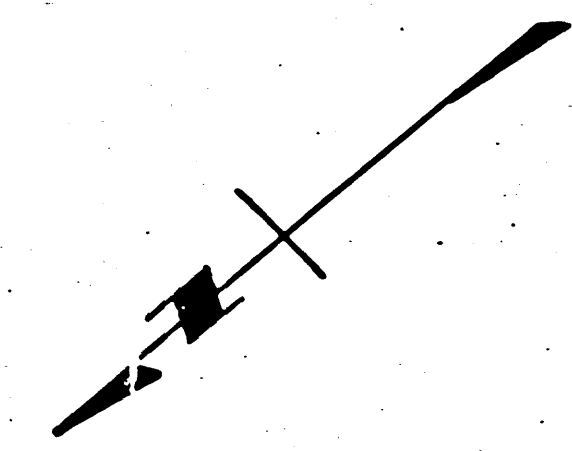
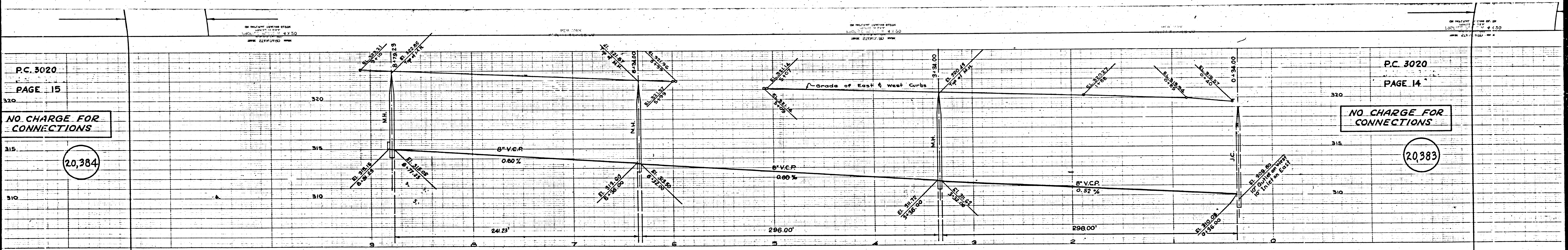
Trim Line

NO CHARGE FOR CONNECTIONS

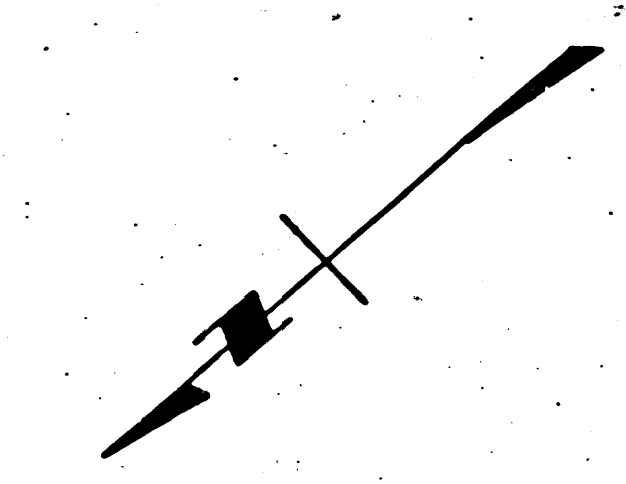
NO CHARGE FOR CONNECTIONS

20,384

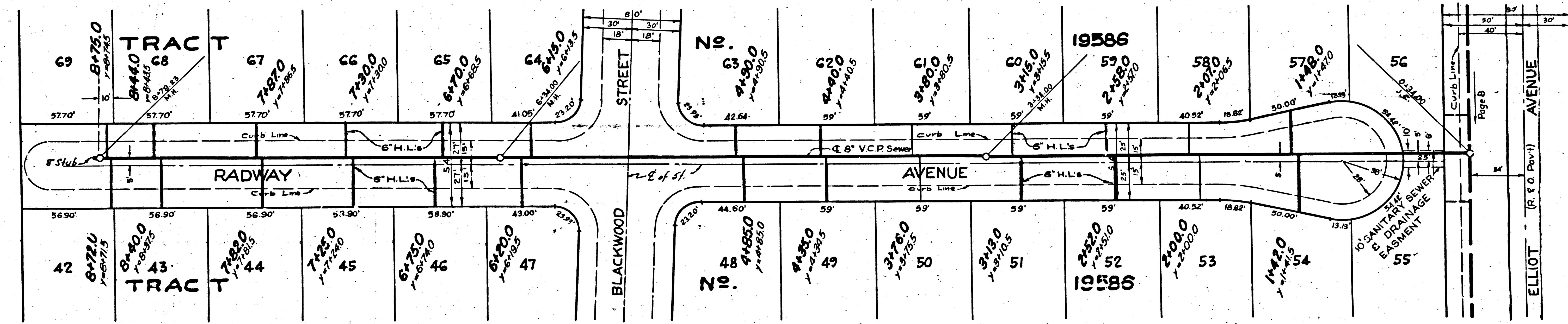
20,383



Revisions Approved:
M. K. ... 5-2-55



Revisions Approved:
P. K. ... 5-2-55

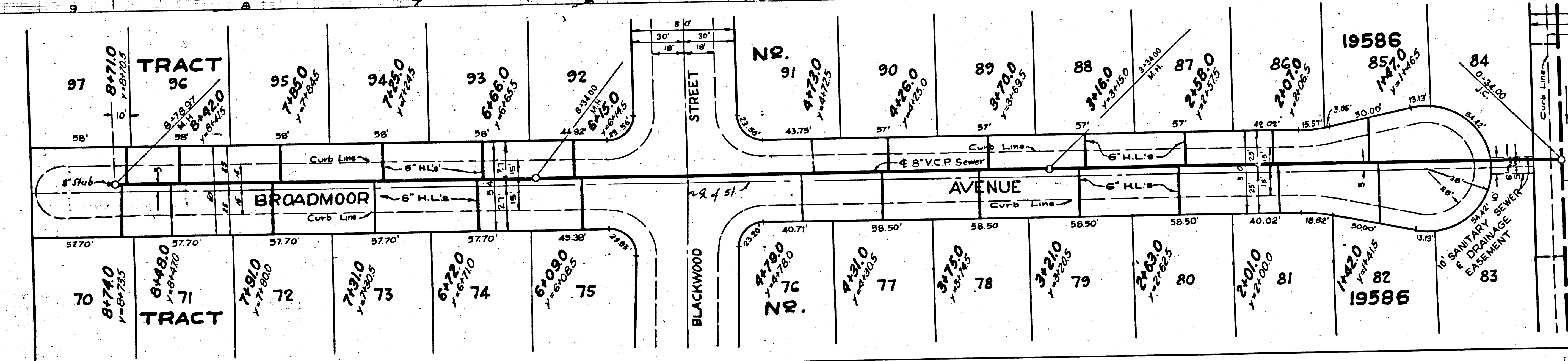
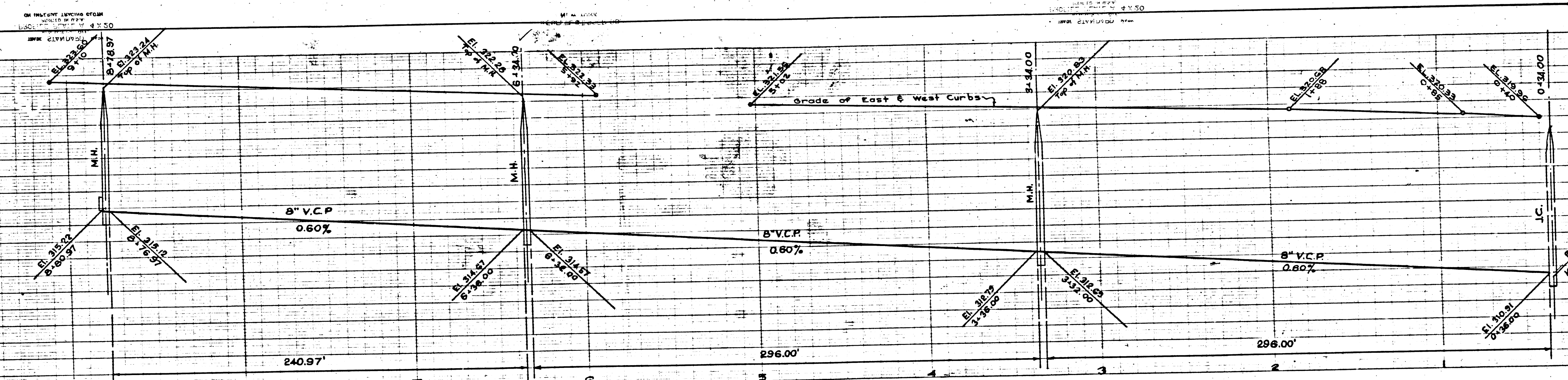


(7)

TRACT No. 12888

b.c. 3030

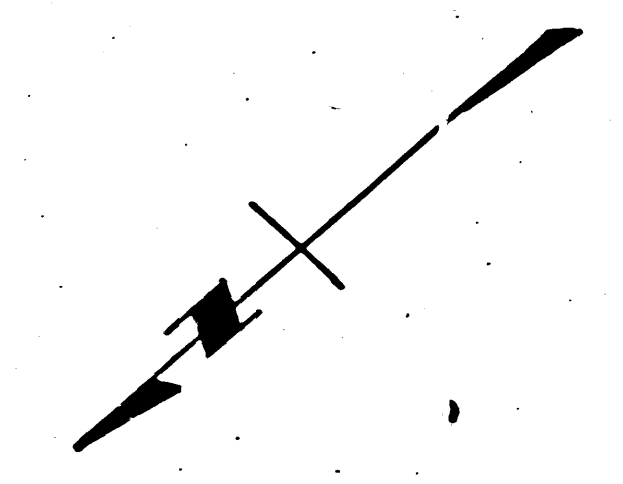
PC 3030



P.C. 3020
PAGE 15

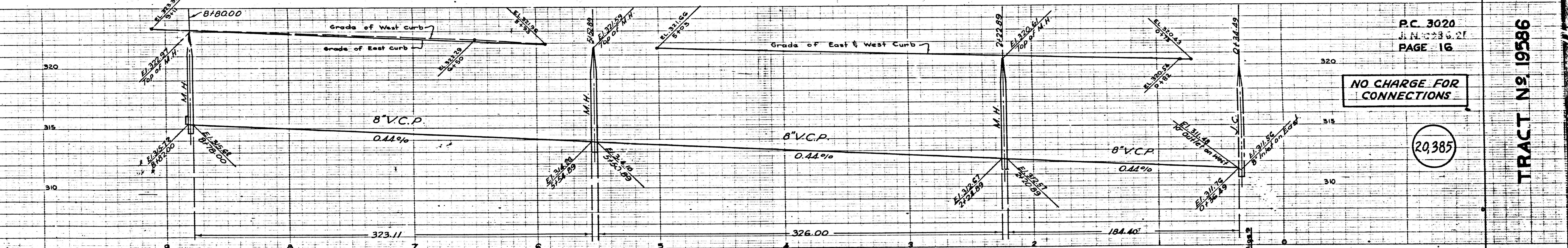
NO CHARGE FOR CONNECTIONS.

20,384



Revised Appr'd:
M. K. S. 5-25

1/8" = 100' (Scale)
 1/4" = 100' (Scale)
 1/2" = 100' (Scale)

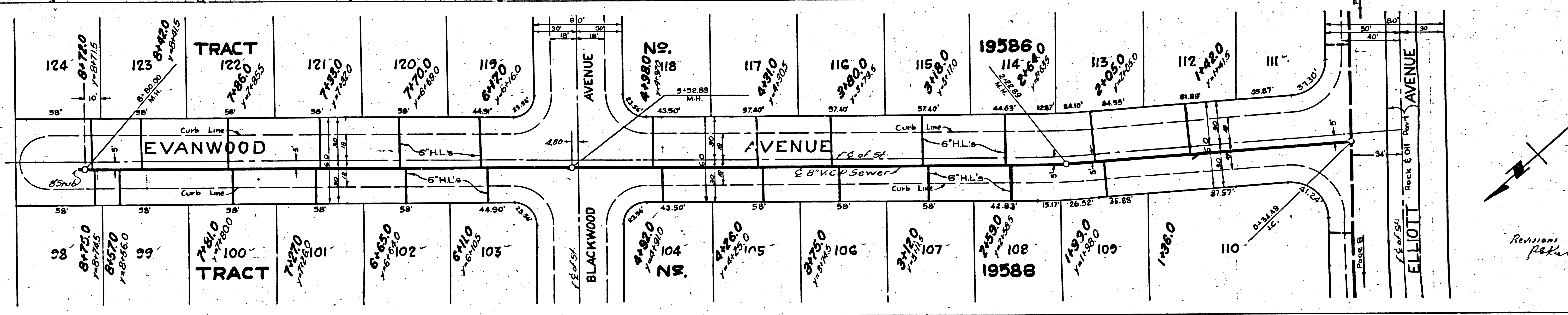


P.C. 3020
 J. H. C. 230.27
 PAGE 16

NO CHARGE FOR CONNECTIONS

20,385

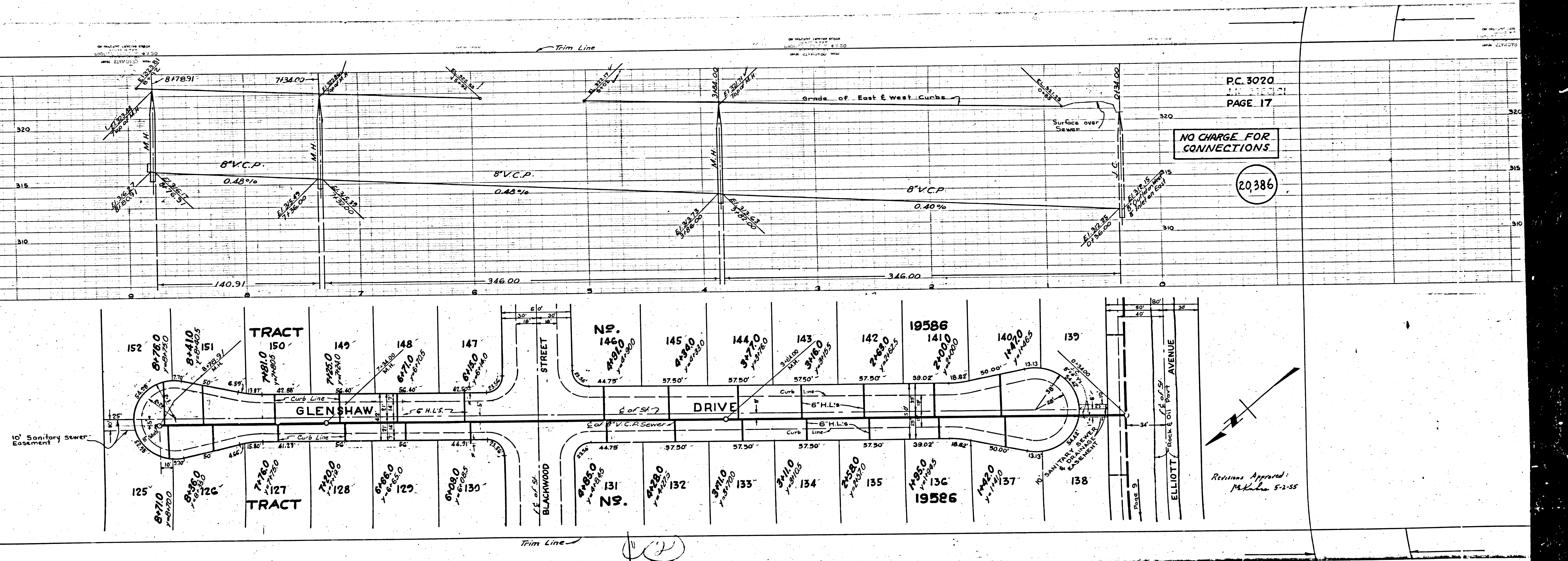
TRACT NO. 19586



Revisions Approved
 P. H. C. 5-2-55

P.C. 3020
 050E.59

4



PC. 3020
PAGE 17

NO CHARGE FOR CONNECTIONS

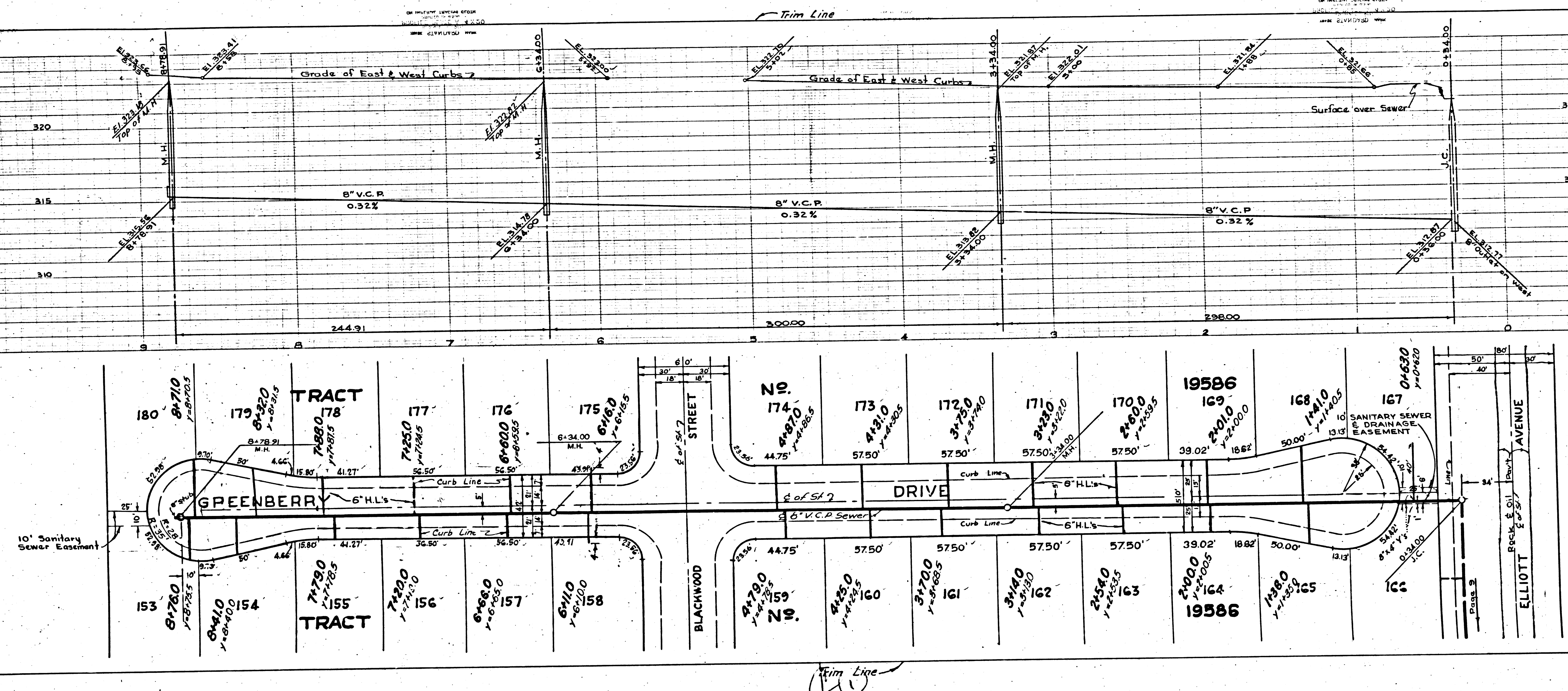
20386

Revisions Approved:
M. K. ... 5-2-55

TRACT IN 18288

PC 3070

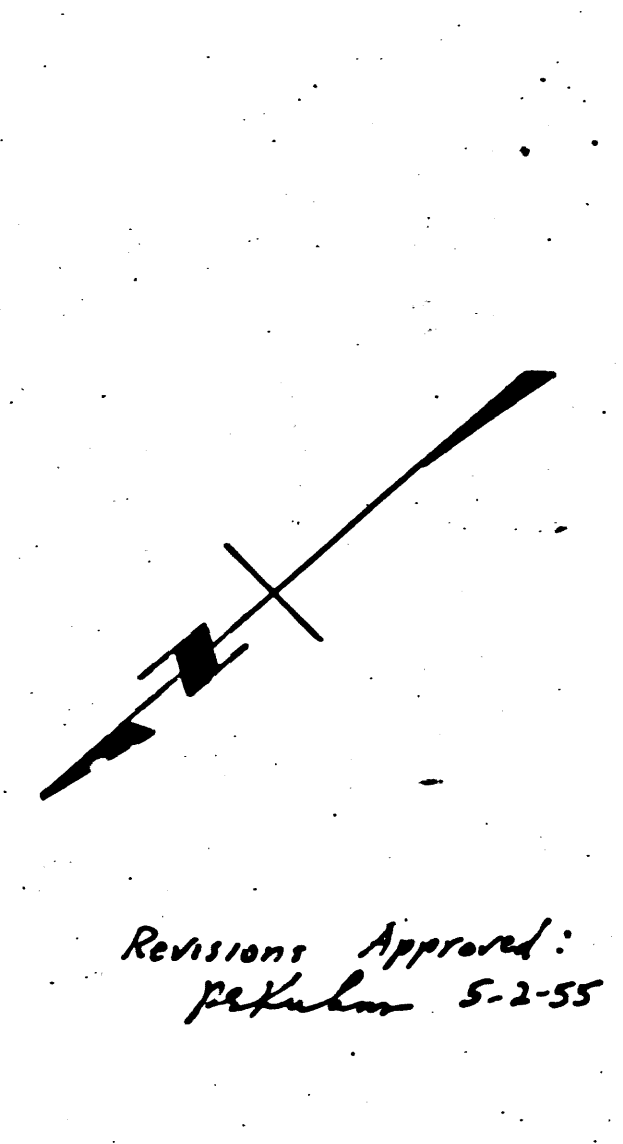
BC 3030



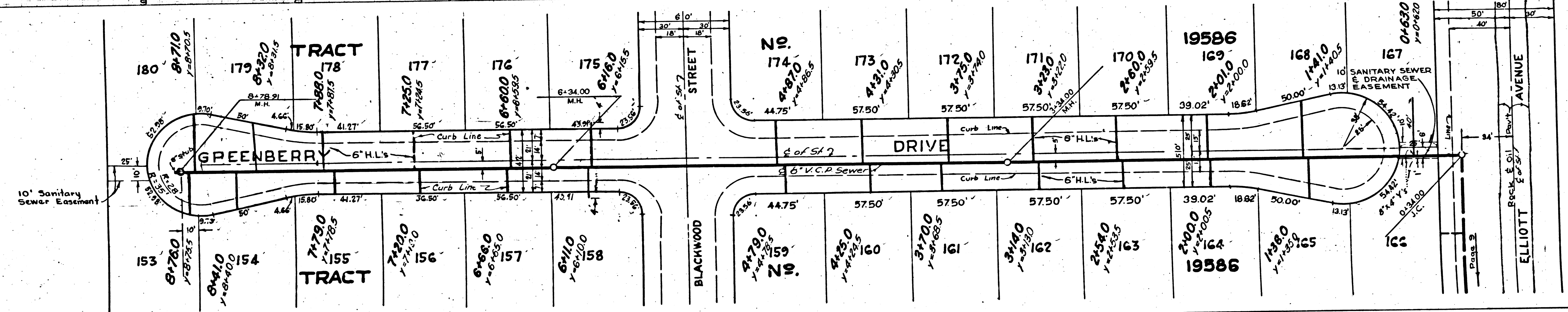
P.C. 3020
PAGE 18

NO CHARGE FOR CONNECTIONS

20,387



Revisions Appr'd:
p/plan 5-2-55



Trim Line