

**TEMPLE CITY BLDG. DIST. NO. 5**

**NOTE:**  
 PROVIDE STAKES ON THE PROPERTY LINES OR PROPERTY LINES PRODUCED AT RIGHT ANGLES TO THE SEWER LINE AT THE CENTER LINE OF EACH MANHOLE. NO REPRESENTATIVE OF THE COUNTY ENGINEER WILL SURVEY OR LAY OUT ANY PORTION OF THE WORK.  
 THE OWNER OR HIS AUTHORIZED REPRESENTATIVE SHALL FURNISH THE COUNTY ENGINEER WITH GRADE SHEETS AND STATIONS FOR ALL HOUSE LATERALS AND Y-BRANCHES AND SHALL PROVIDE STAKES FOR THEM AT THEIR PROPER LOCATIONS WITH STATIONING PLAINLY MARKED. ANY CHANGE IN LOCATION SHALL BE REQUESTED IN WRITING BY THE OWNER OR HIS REPRESENTATIVE. NO DECISIONS SHALL BE MADE IN THESE PLANS WITHOUT APPROVAL OF THE COUNTY ENGINEER.

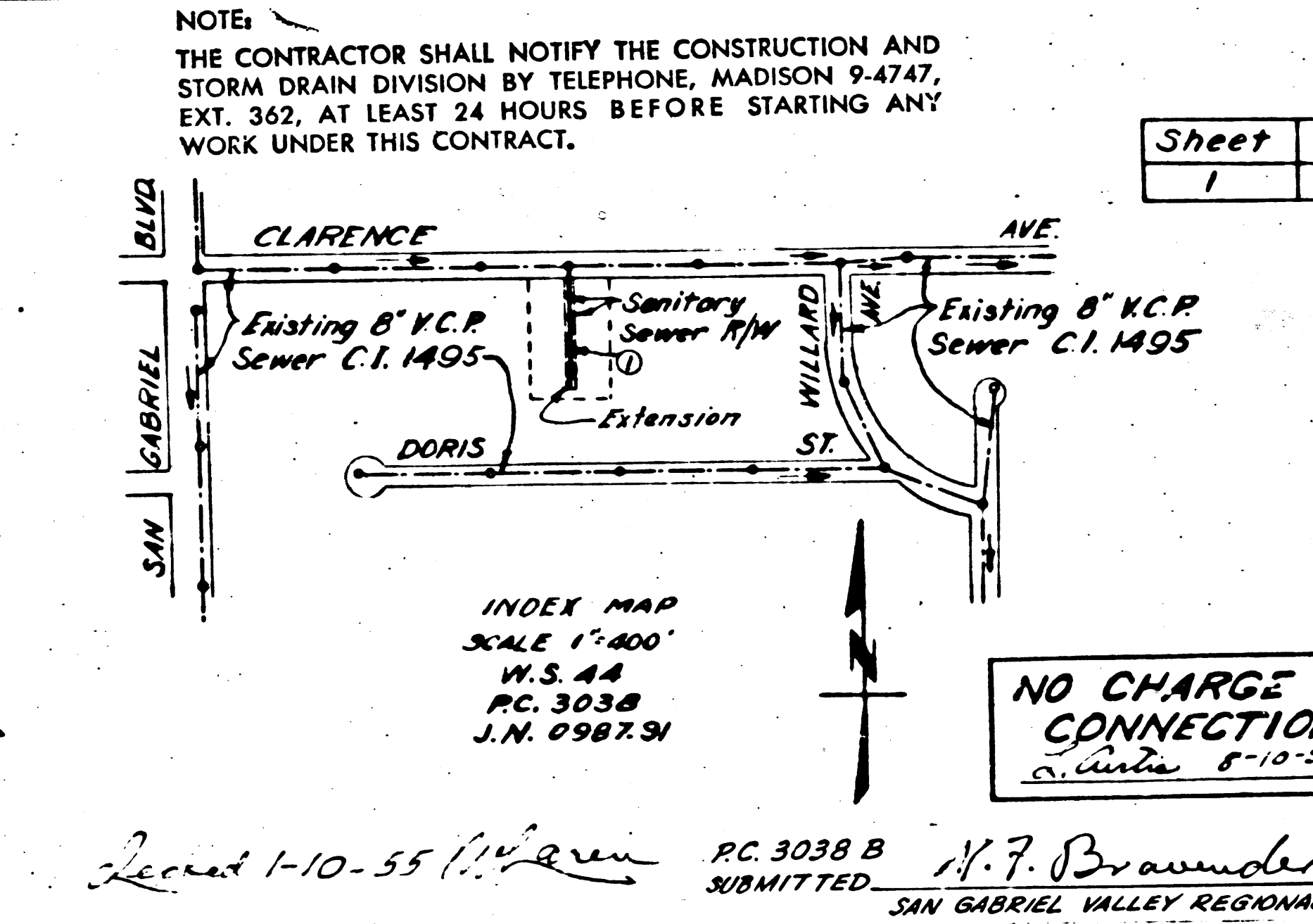
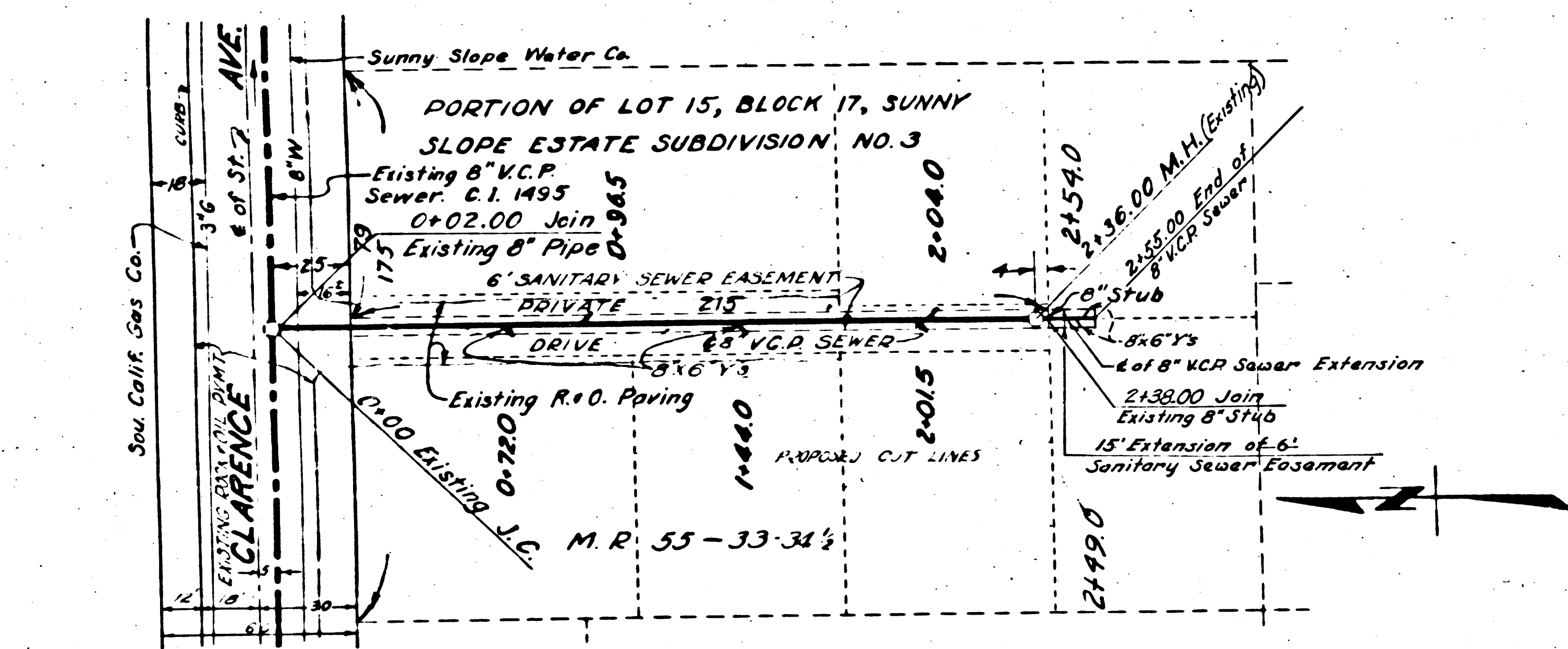
- USE STANDARD MANHOLE FRAMES AND COVERS.
- USE STANDARD STRENGTH PIPE EXCEPT AS NOTED.
- USE GUNNITE FOR ALL WITHELD CLAY PIPE JOINTS.
- TERMINATE TRENCH WITHIN PAVED AREA TO MEET L.A. COUNTY ROAD DEPT. SPEC.
- GRADE FROM POINT OF SEWER OR POINTS OF INTERFERENCE WITH POLES 3'-0\"/>

7. FOR ALLOWABLE LEAKAGE TEST, USE FORMULA NO. 1, SPEC. SEC. 51.  
 8. MANHOLE TOPS IN UNIMPROVED QUARTERS-WAY TO BE 6\"/>

<b>PROFILE, ALIGNMENT AND GRADE OF SANITARY SEWERS TO BE CONSTRUCTED IN SANITARY SEWER RIGHT OF WAY</b>		<b>P.C. 3038-B</b> <b>J.N. 0987.91</b> <b>PAGE 1</b>
<b>PRIVATE CONTRACT NO. 3038</b>		<b>19570</b>
<b>SCALE:</b> VERT. 1"=4' HORIZ. 1"=30'	<b>1 SHEET</b> <b>MAY 12, 1954</b>	
PREPARED BY <b>HARRY A. KEEBURN, P.E. 2739</b> EXTENSION PREPARED BY <b>Wm. J. Fox</b>		

3038

PC



**NOTE:**  
 GRADES TO WHICH THIS IMPROVEMENT IS TO BE CONSTRUCTED ARE SHOWN ON PLANS AND PROFILES. GRADE POINTS FOR TOP OF CURB, CENTER LINE OF STREET OR CENTER LINE OF ALLEY ARE SHOWN BY CIRCLES ON PROFILE. AT ALL POINTS BETWEEN DESIGNATED POINTS THE GRADE SHALL BE ESTABLISHED SO AS TO CONFORM TO A STRAIGHT LINE DRAWN BETWEEN SAID DESIGNATED POINTS. ELEVATIONS ARE IN FEET ABOVE U.S.C. DATUM OR MEAN SEA LEVEL. THIS DRAWING AND THE DATA HEREON ARE HEREBY MADE A PART OF THE SPECIFICATIONS. WORK SHALL BE CONSTRUCTED ACCORDING TO SPECIFICATIONS ON FILE IN THE OFFICE OF THE COUNTY ENGINEER AND SHALL BE PROSECUTED ONLY IN THE PRESENCE OF THE COUNTY ENGINEER.  
 BEFORE WORK CAN BE STARTED, THE CONTRACTOR MUST OBTAIN A PERMIT TO EXCAVATE IN COUNTY STREETS FROM THE L.A. COUNTY ROAD DEPT., 100 W. 2ND ST. AND MAKE A DEPOSIT WITH THE COUNTY ENGINEER OF THE L.A. COUNTY ROAD DEPT. SUFFICIENT TO COVER THE COST OF CONSTRUCTION INSPECTION AND RECORD PLANS.  
 APPROVAL OF THIS PLAN BY THE COUNTY OF LOS ANGELES DOES NOT CONSTITUTE A REPRESENTATION AS TO THE ACCURACY OF THE LOCATION OF OR THE EXISTENCE OR NON-EXISTENCE OF ANY UNDERGROUND UTILITY PIPE OR STRUCTURE WITHIN THE LIMITS OF THIS PROJECT (THIS NOTE APPLIES TO ALL SHEETS). THIS WORK IS TO BE DONE IN A STATE HIGHWAY. A PERMIT MUST BE OBTAINED FROM THE DIVISION OF HIGHWAYS, 100 SO. SPRING ST., LOS ANGELES, CALIF.

**COUNTY OF LOS ANGELES, CALIFORNIA**

APPROVED **WILLIAM J. FOX** COUNTY ENGINEER  
 BY **W.P. [Signature]** SANITATION ENGINEER

APPROVED **A.M. RAWN** CHIEF ENGR., CO. SAN. DIST. NO. 15  
 BY **[Signature]** ASST. OFFICE ENGINEER

CHECKED BY **[Signature]** OFFICE OF COUNTY ENGINEER REG. CE NO. 3260

EXTENSION APPROVED, JOHN A. LAMBIE, COUNTY ENGINEER  
 BY **[Signature]** ASST. SANITATION ENGINEER

EXTENSION APPROVED, CHIEF ENGR. OF SAN. DIST. NO. 15  
 BY **[Signature]** OFFICE ENGINEER

NO CHARGE FOR CONNECTIONS  
 8-10-54

PC 3038 B  
 SUBMITTED **M.F. Brannan**  
 SAN GABRIEL VALLEY REGIONAL ENGINEER

PC 3038  
 10000-V.A.  
 800-C.S.

Trim Line

TEMPLE CITY BLDG. DIST. No 5

TEMPLE CITY BLDG. DIST. No 5

B.M. TF-928, Elev. 495.581 C.S.F.B. 1588, pg. 233  
Clarence St. (N. side) at Willard Ave.  
B.F. Spk. in curb, 6' E. of 8' prod. of Willard Ave.

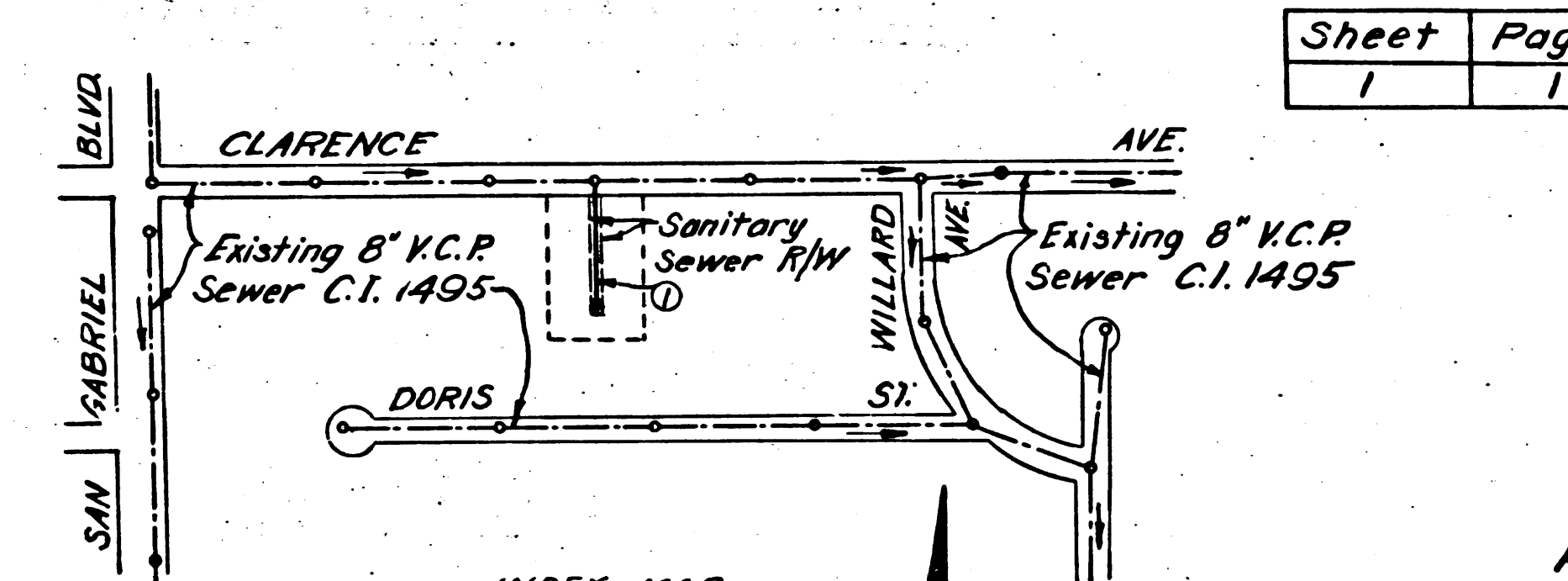
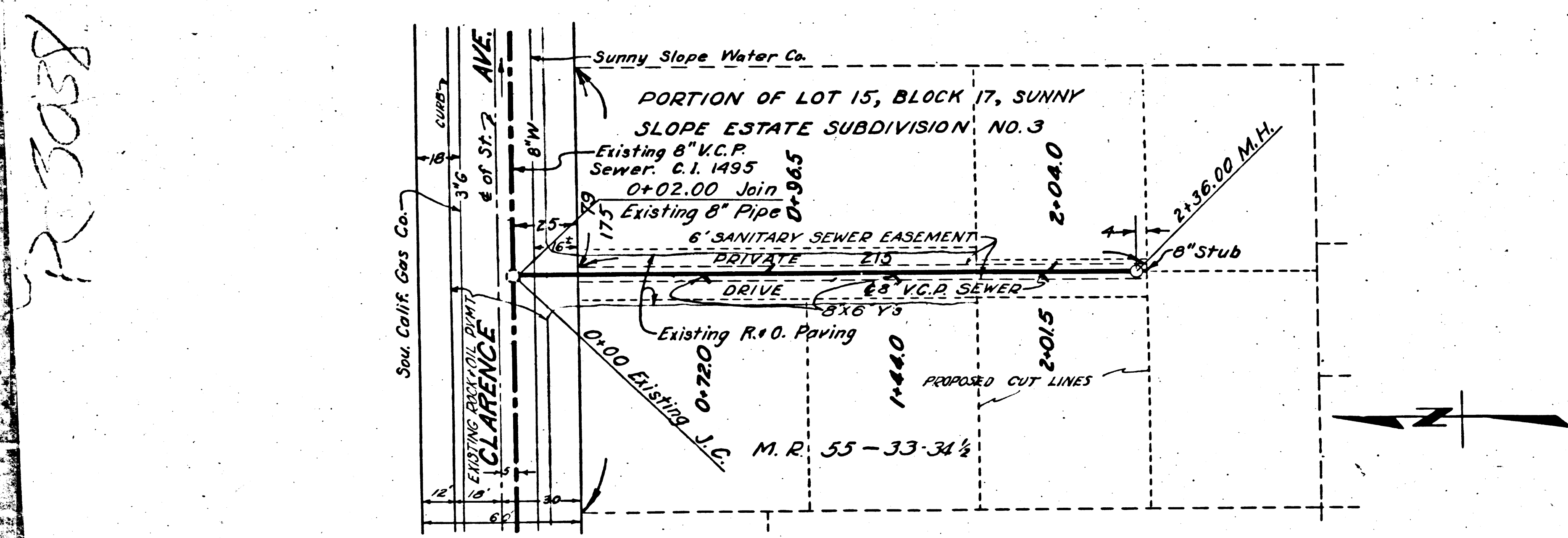
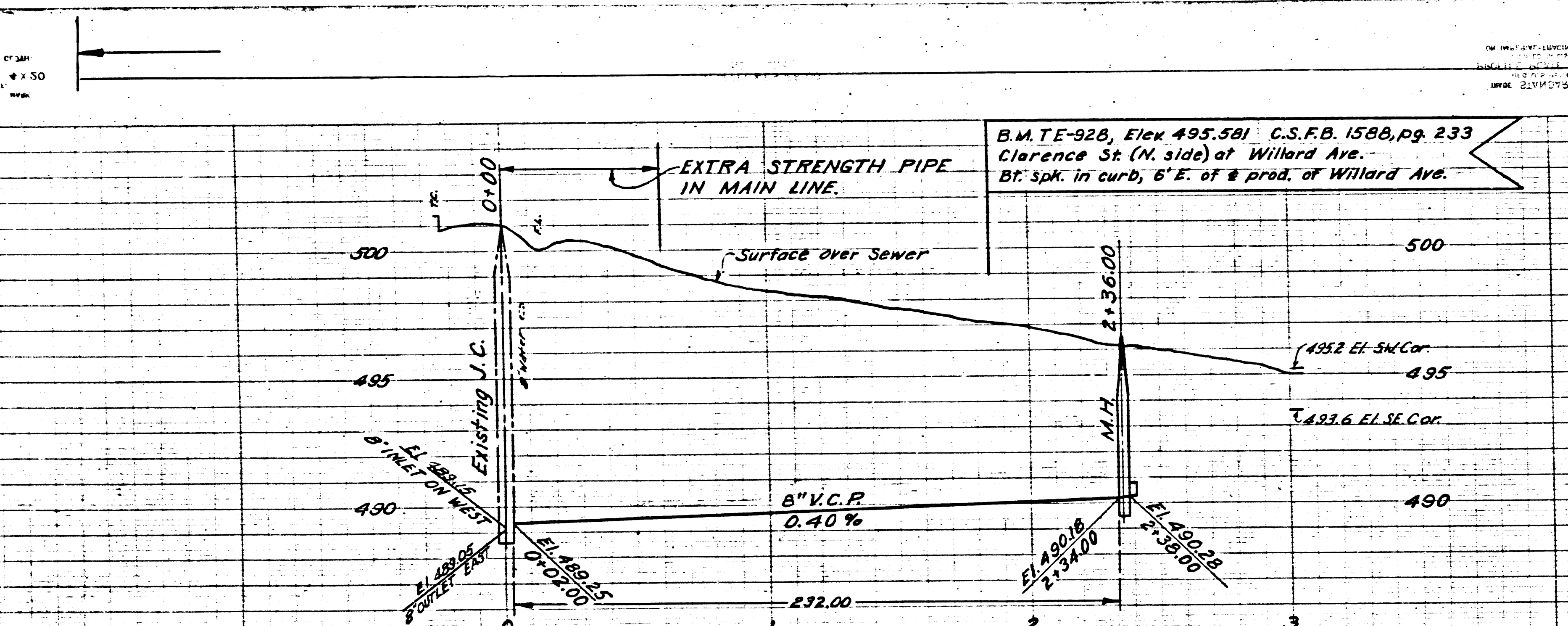
NOTE:  
 PROVIDE STAKES ON THE PROPERTY LINES OR PROPERTY LINES PRODUCED AT RIGHT ANGLES TO THE SEWER LINE AT THE CENTER LINE OF EACH MANHOLE. NO REPRESENTATIVE OF THE COUNTY ENGINEER WILL SURVEY OR LAY OUT ANY PORTION OF THE WORK.  
 THE OWNER OR HIS AUTHORIZED REPRESENTATIVE SHALL FURNISH THE COUNTY ENGINEER WITH GRADE SHEETS AND STATIONS FOR ALL HOUSE LATERALS AND Y-BRANCHES AND SHALL PROVIDE STAKES FOR THEM AT THEIR PROPER LOCATIONS WITH STATIONING PLAINLY MARKED. ANY CHANGE IN LOCATION SHALL BE REQUESTED IN WRITING BY THE OWNER OR HIS REPRESENTATIVE. NO REVISIONS SHALL BE MADE IN THESE PLANS WITHOUT APPROVAL OF THE COUNTY ENGINEER.

1. USE STANDARD MANHOLE FRAMES AND COVERS, 36" IT.
2. USE STANDARD STRENGTH PIPE EXCEPT AS NOTED.
3. USE CEMENT MORTAR FOR ALL VITRIFIED CLAY PIPE JOINTS.
4. RESURFACE TRENCH WITHIN PAVED AREA TO MEET L.A. COUNTY ROAD DEPT. SPEC.
5. EXPOSE FOUR FEET OF SEWER AT POINTS OF INTERFERENCE WITH POLES, 3'-0" MIN.
6. ALL STRUCTURES SHALL BE BRICK SEWER STRUCTURES, 8"-10" DIA.
7. FOR ALLOWABLE LEAKAGE TEST, USE FORMULA NO. 1, SPEC. SEC. 51.
8. MANHOLE TOPS IN UNIMPROVED RIGHTS-OF-WAY TO BE 6" ABOVE FINISHED GRADE.

PROFILE, ALIGNMENT AND GRADE OF  
**SANITARY SEWERS**  
 TO BE CONSTRUCTED IN  
**SANITARY SEWER**  
**RIGHT OF WAY**

P.C. 3038  
 J.N. 0987.91  
 PAGE 1

PRIVATE CONTRACT No 3038  
 VERT. 1"=4'  
 SCALE: HORIZ. 1"=40'  
 W.S. 44  
 PREPARED BY HARRY B. KEEBAUGH R.E. 8733  
 Harry B. Keebaugh



INDEX MAP  
 SCALE 1"=400'  
 W.S. 44  
 P.C. 3038  
 J.N. 0987.91

NO CHARGE FOR CONNECTIONS  
 8-19-54

NOTE:-  
 GRADES TO WHICH THIS IMPROVEMENT IS TO BE CONSTRUCTED ARE SHOWN ON PLANS AND PROFILES. GRADE POINTS FOR TOP OF CURB, CENTER LINE OF STREET OR CENTER LINE OF ALLEY ARE SHOWN BY CIRCLES ON PROFILE. AT ALL POINTS BETWEEN DESIGNATED POINTS THE GRADE SHALL BE ESTABLISHED SO AS TO CONFORM TO A STRAIGHT LINE DRAWN BETWEEN SAID DESIGNATED POINTS. ELEVATIONS ARE IN FEET ABOVE U.S.C. & G.S. DATUM OR MEAN SEA LEVEL. THIS DRAWING AND THE DATA HEREON ARE HEREBY MADE A PART OF THE SPECIFICATIONS. WORK SHALL BE CONSTRUCTED ACCORDING TO SPECIFICATIONS ON FILE IN THE OFFICE OF THE COUNTY ENGINEER AND SHALL BE PROSECUTED ONLY IN THE PRESENCE OF THE COUNTY ENGINEER.  
 BEFORE WORK CAN BE STARTED, THE CONTRACTOR MUST OBTAIN A PERMIT TO EXCAVATE IN COUNTY STREETS FROM THE L.A. COUNTY ROAD DEPT., 108 W. 2nd ST AND MAKE A DEPOSIT WITH THE COUNTY ENGINEER, 753 L.A. CO. ENGR. BLDG., SUFFICIENT TO COVER THE COST OF CONSTRUCTION INSPECTION AND RECORD PLANS.  
 APPROVAL OF THIS PLAN BY THE COUNTY OF LOS ANGELES DOES NOT CONSTITUTE A REPRESENTATION AS TO THE ACCURACY OF THE LOCATION OF OR THE EXISTENCE OR NON-EXISTENCE OF ANY UNDERGROUND UTILITY, PIPE OR STRUCTURE WITHIN THE LIMITS OF THIS PROJECT (THIS NOTE APPLIES TO ALL SHEETS). IF WORK IS TO BE DONE IN A STATE HIGHWAY, A PERMIT MUST BE OBTAINED FROM THE STATE OF CALIF. DIVISION OF HIGHWAYS, 126 SO. SPRING ST.  
**COUNTY OF LOS ANGELES, CALIFORNIA**

APPROVED WILLIAM J. FOX COUNTY ENGINEER  
 BY *W.J. Fox*  
 SANITATION ENGINEER

APPROVED A.M. RAWN CHIEF ENGR. CO. SAN. DIST. NO. 15  
 BY *A.M. Rawn*  
 ASST. OFFICE ENGINEER  
 8-13-54  
 CHECKED BY *R. J. ...*  
 OFFICE OF COUNTY ENGINEER, REG. CE NO. 12660

P.C. 3038 R/W SOUTH OF CLARENCE AVE. 127880 W.V. 1950

P.C. 3038

Checked 1-10-55 *W. ...*  
 Trim Line