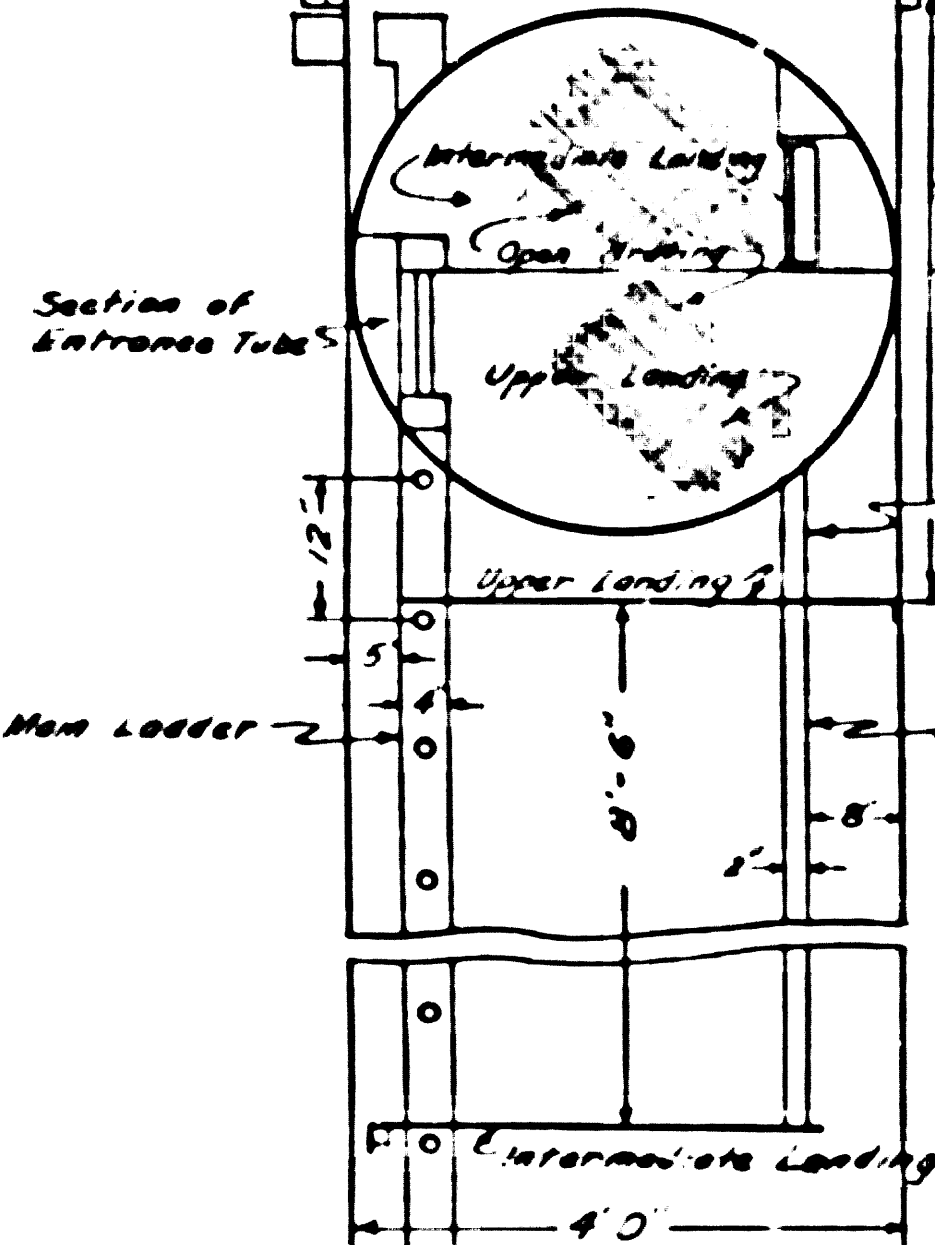
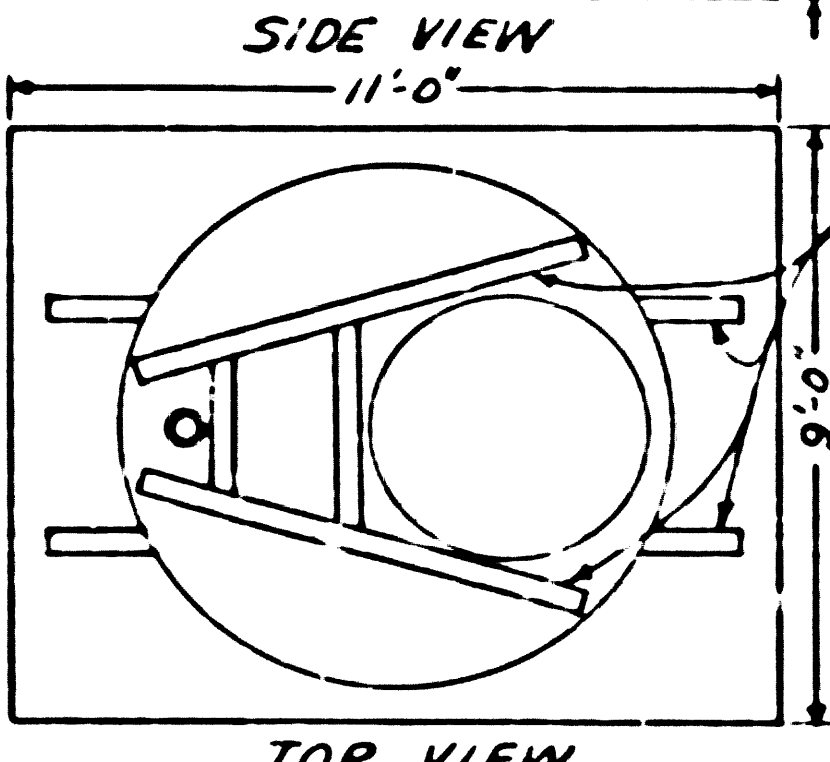
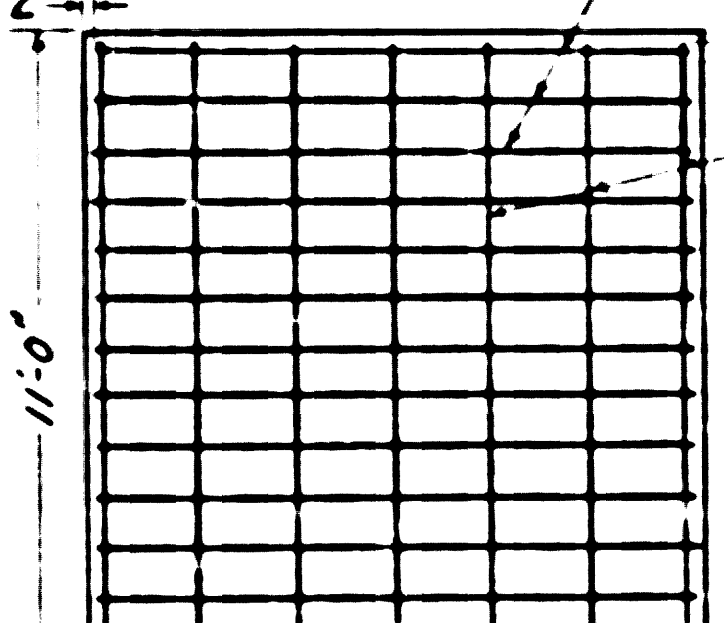
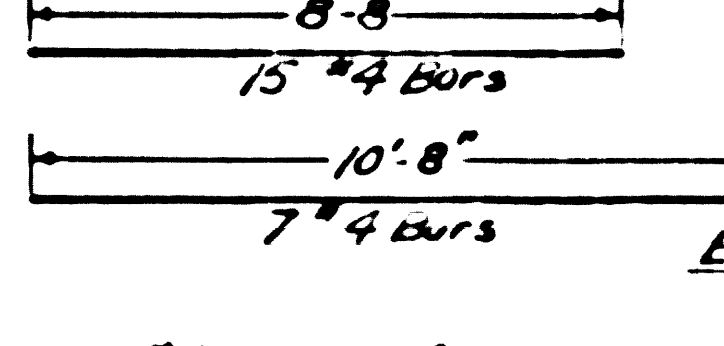


- 1-Ultimate concrete stress (28 days) $f_c = 3000$ psi.
- 2-Use deformed bars.
- 3-Allowable steel stress $f_s = 20,000$ psi.
- 4-Contractor shall exercise care when excavating pit for pump station so that excavation be carried only to grade.



ENTRANCE TUBE
with
STAGE LANDINGS
Scale 1/2" = 1'-0"

Duplex Pneumatic Sewage Ejector
Complete Factory-Built
Smith and Lovelace
Type "Way-O-Matic"
or approved equal
Refer to Section 77 etc.
of Specifications

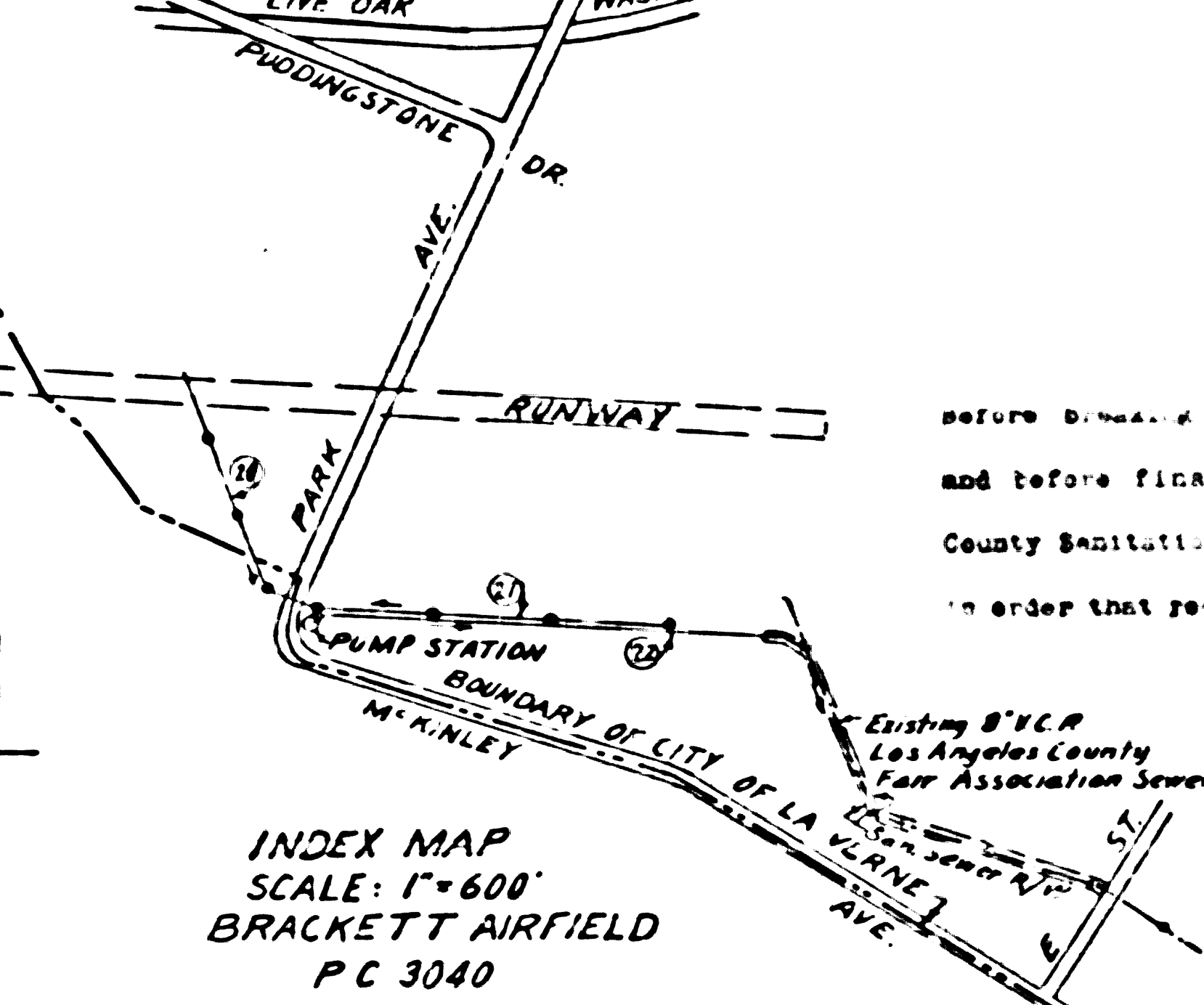


Fill this area with
Class B Concrete

Scale: 1/4" = 1'-0"

USE STANDARD STRENGTH PIPE EXCEPT AS NOTED.
USE CEMENT MORTAR FOR ALL VITRIFIED CLAY PIPE
JOINTS.
ALL STRUCTURES SHALL BE BRICK SEWER STRUCTURES
AS PER PLAN NO. S-A-104
USE FORMULA NO. 1, SEC. 54 OF SPECIFICATIONS TO
COMPUTE ALLOWABLE LEAKAGE.
WHERE CAST IRON PIPE IS CALLED FOR, USE WATER
CAST IRON (BELL AND SPIGOT) N° W-W-P-421.
USE CEMENT MORTAR FOR ALL CAST IRON PIPE JOINTS
EXCEPT AS NOTED.

T. B. M. Elev. 998.03 - Std. C. S. Man. in H.H.
at intersection Walnut Ave. and "E" Street
C. S. F. B. 1836, pg. 138
For additional Bench Marks see printed list.



INDEX MAP
SCALE: 1" = 600'
BRACKETT AIRFIELD
P.C. 3040

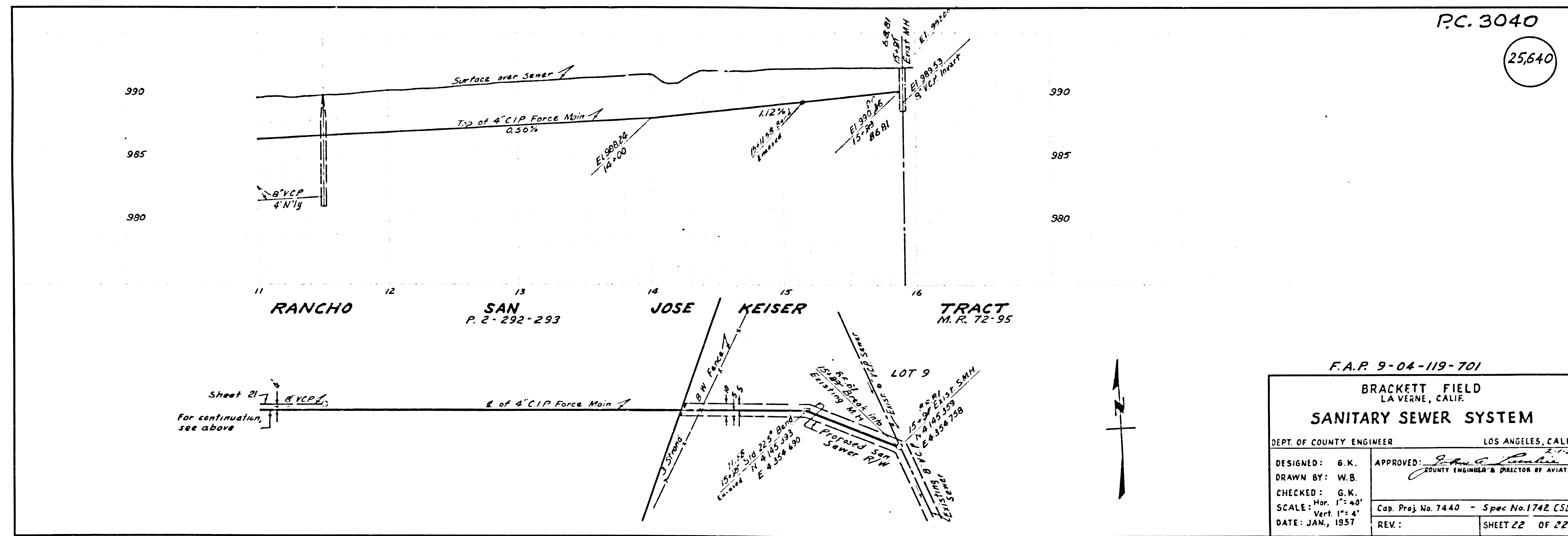
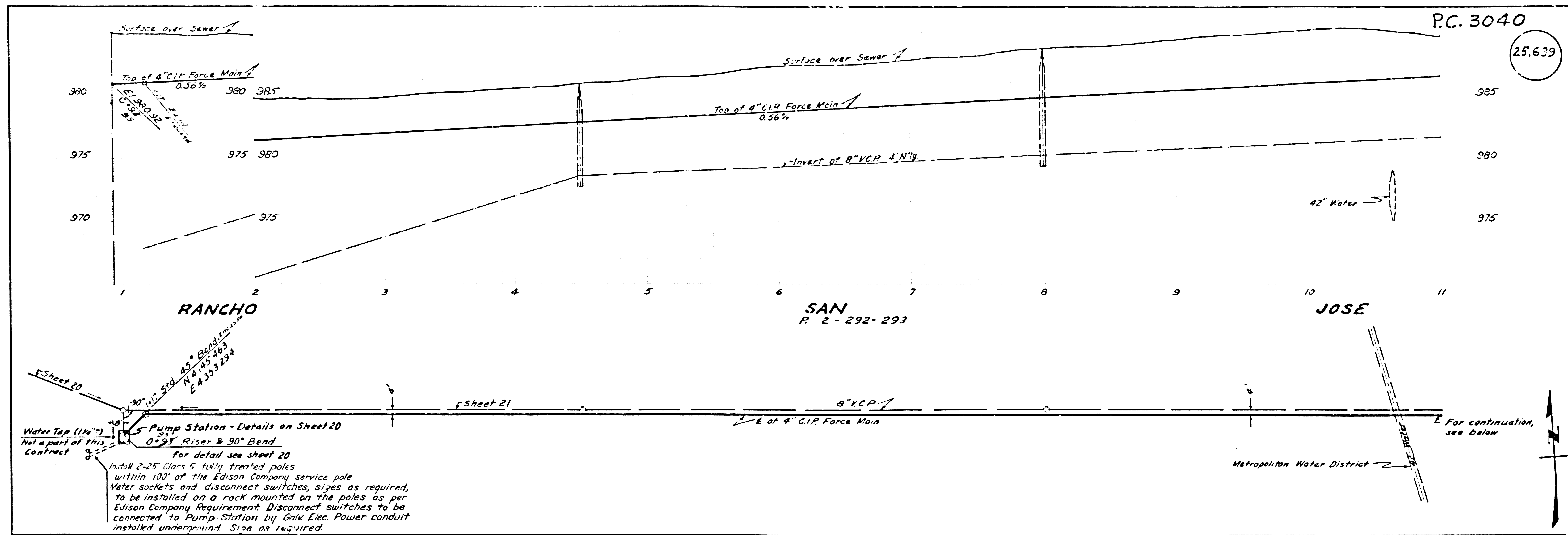
P.C. 3040
CAPITAL PROJECT NO. 7440
PROFILE, ALIGNMENT AND GRADE OF
SANITARY SEWERS
TO BE CONSTRUCTED IN
BRACKETT FIELD
PRIVATE CONTRACT NO. 3040
COUNTY OF LOS ANGELES, CALIFORNIA
JOHN A. LAMBIE COUNTY ENGINEER
SUBMITTED 2/21/57 APPROVED [Signature] 2/21/57

APPROVED A. M. DRAWN
FOR LEGEND BY [Signature] OFFICE ENGINEER
NOTE: GRADES TO WHICH THIS IMPROVEMENT IS TO BE CONSTRUCTED ARE SHOWN ON PLANS AND PROFILES.
GRADE POINTS FOR TOP OF CURB, CENTER LINE OF STREET OR CENTER LINE OF ALLEY ARE SHOWN BY
CIRCLES ON PROFILES. AT ALL POINTS BETWEEN DESIGNATED POINTS THE GRADE SHALL BE ESTABLISHED
SO AS TO CONFORM TO A STRAIGHT LINE DRAWN BETWEEN SAID DESIGNATED POINTS.
ELEVATIONS ARE IN FEET ABOVE U. S. C. & G. S. MEAN SEA LEVEL UNLESS OTHERWISE NOTED.
UNIT PRICES FOR ADDITIONAL WORK WHICH MAY BE REQUIRED BUT WHICH CANNOT BE ASCERTAINED
IN ADVANCE SHALL BE SUBMITTED IN THE PROPOSAL.
THIS DRAWING AND THE DATA HEREON ARE HEREBY MADE A PART OF THE SPECIFICATIONS.

AS CONSTRUCTED PLAN
Prepared By [Signature] March 10, 1957
F. A. P. 9-04-119-701

BRACKETT FIELD LA VERNE, CALIF.	
SANITARY SEWER SYSTEM	
DESIGNED: G. K.	APPROVED: [Signature]
DRAWN BY: W. B.	COUNTY ENGINEER IN CHARGE OF DIVISION
CHECKED: G. K.	
SCALE: Hor. 1" = 40' Vert. 1" = 4'	Cap. Proj. No. 7440 Spec. No. 142 CSD-R
DATE: JAN, 1957	REV. [Signature] Ch. of [Signature] SHEET 20 OF 22

AM's checked
1-31-57 J.B.



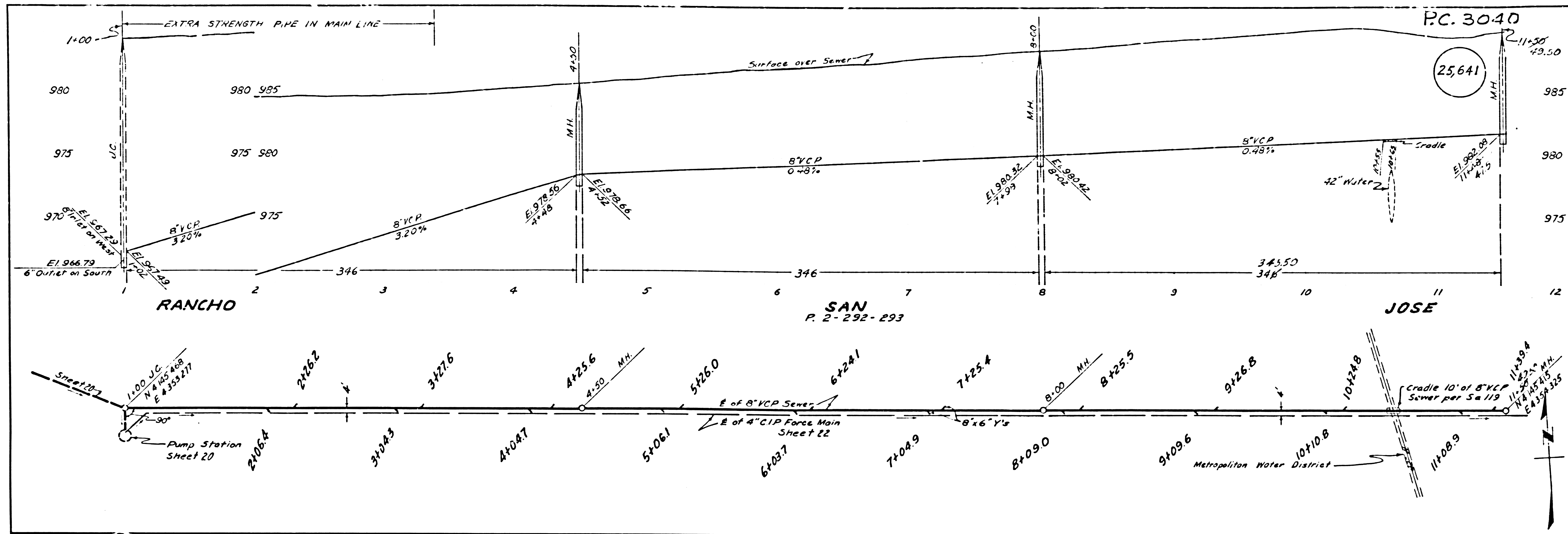
P.C. 3040
25,639

P.C. 3040
25,640

F.A.P. 9-04-119-701

BRACKETT FIELD
LA VERNE, CALIF.
SANITARY SEWER SYSTEM

DEPT. OF COUNTY ENGINEER		LOS ANGELES, CALIF.	
DESIGNED: G.K.	APPROVED: <i>John C. Lumber</i> COUNTY ENGINEER & DIRECTOR OF AVIATION		
DRAWN BY: W.B.			
CHECKED: G.K.			
SCALE: Hor. 1"=40' Vert. 1"=4'	Cap. Proj. No. 7440 - Spec No. 1742 CSD 2		
DATE: JAN., 1957	REV.:	SHEET 22 OF 22	



PC. 30+40

25,641

RANCHO

SAN
P. 2-292-293

JOSE

25,642

F. A. P. 3-04-119-701

BRACKETT FIELD
LA VERNE, CALIF.
SANITARY SEWER SYSTEM

DEPT. OF COUNTY ENGINEER LOS ANGELES, CALIF.

DESIGNED: G. K. APPROVED: *John A. ...*
DRAWN BY: W. B. COUNTY ENGINEER & DIRECTOR OF AVIATION

CHECKED: G. K.
SCALE: Hor 1"=40'
DATE: JAN, 1937

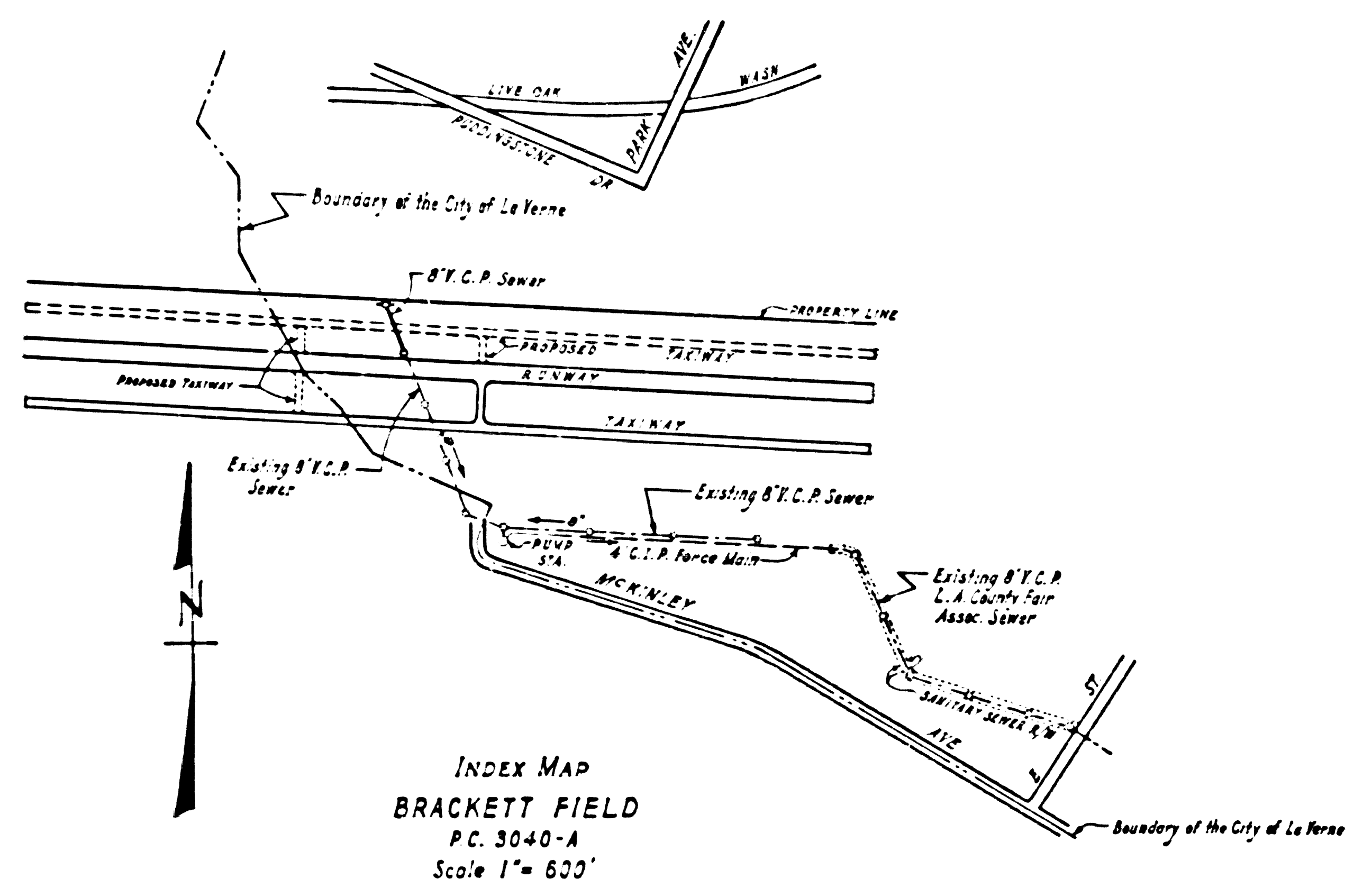
Cap Proj No 7440 Spec No 1742 CSD R
REV SHEET 21 OF 22

11-11-37

PC. 3040-A

T. B. M. Elev. 968.03 Std. C.S. Mon. in H.H. at intersection Walnut Ave. and "E" Street C. S. F. B. 1835 Pg. 138

For additional Bench Marks see printed list.



USE STANDARD STRENGTH PIPE.
USE CEMENT MORTAR FOR ALL VITRIFIED CLAY PIPE JOINTS.
ALL STRUCTURES SHALL BE BRICK SEWER STRUCTURES AS PER PLAN NO. S-A-104.
USE FORMULA NO. 1 SEC. 54 OF SPECIFICATIONS TO COMPUTE ALLOWABLE LEAKAGE.
USE STANDARD MANHOLE FRAMES AND COVERS PER S-A-117

CAPITAL PROJECT NO. 7440.07
PROFILE, ALIGNMENT AND GRADE OF
SANITARY SEWERS (26,747)
TO BE CONSTRUCTED IN
BRACKETT FIELD
PRIVATE CONTRACT NO. 3040A

COUNTY OF LOS ANGELES, CALIFORNIA
COUNTY ENGINEER
JOHN A. LAMBIE
SUBMITTED *H.L. Suda* ASSISTANT SANITATION ENGINEER
APPROVED *E.L. Hughes* SANITATION ENGINEER
APPROVED A. M. RAWN CHIEF ENGINEER OF COUNTY SANITATION DISTRICT NO. 21
By *E.P. Bennett* OFFICE ENGINEER

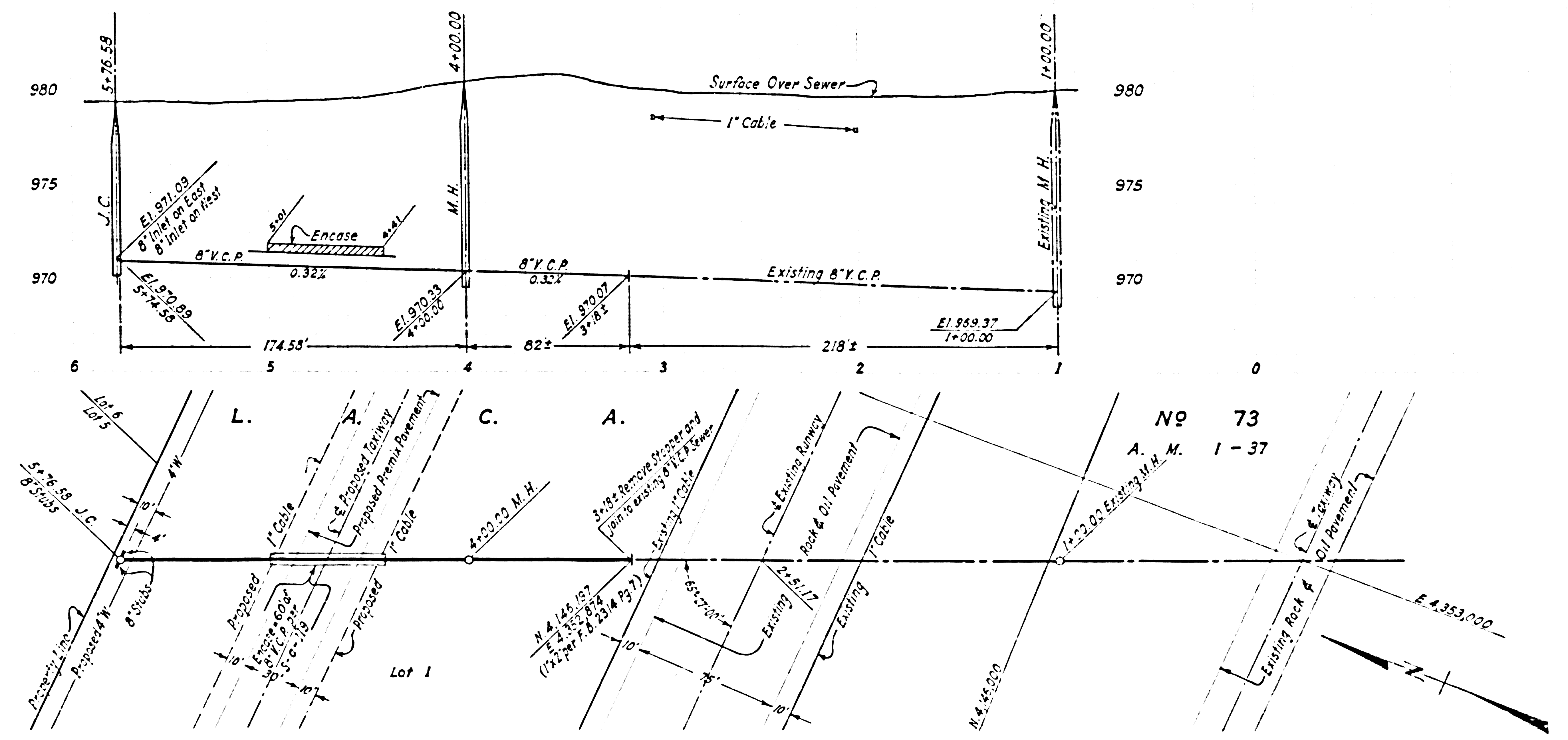
FOR LEGEND See S-A-64

THE CONTRACTOR SHALL NOTIFY THE CONSTRUCTION AND STORM DRAIN DIVISION BY TELEPHONE MADISON 9-4747, EXT. 362 AT LEAST 24 HOURS BEFORE STARTING ANY WORK SHOWN ON THIS PLAN.

NOTE: GRADES TO WHICH THIS IMPROVEMENT IS TO BE CONSTRUCTED ARE SHOWN ON PLANS AND PROFILES. GRADE POINTS FOR TOP CURB, CENTER LINE OF STREET OR CENTER LINE OF ALLEY ARE SHOWN BY CIRCLES ON PROFILES AT ALL POINTS BETWEEN DESIGNATED POINTS THE GRADE SHALL BE ESTABLISHED SO AS TO CONFORM TO A STRAIGHT LINE DRAWN BETWEEN SAID DESIGNATED POINTS. ELEVATIONS ARE IN FEET ABOVE U.S.C. & G.S. SEA LEVEL DATUM OF 1929. UNIT PRICES FOR ADDITIONAL WORK WHICH MAY BE REQUIRED BUT WHICH CANNOT BE ASCERTAINED IN ADVANCE SHALL BE SUBMITTED IN THE PROPOSAL. THIS DRAWING AND THE DATA HEREON ARE HEREBY MADE A PART OF THE SPECIFICATIONS.

PC. 3040-A

(26,748)



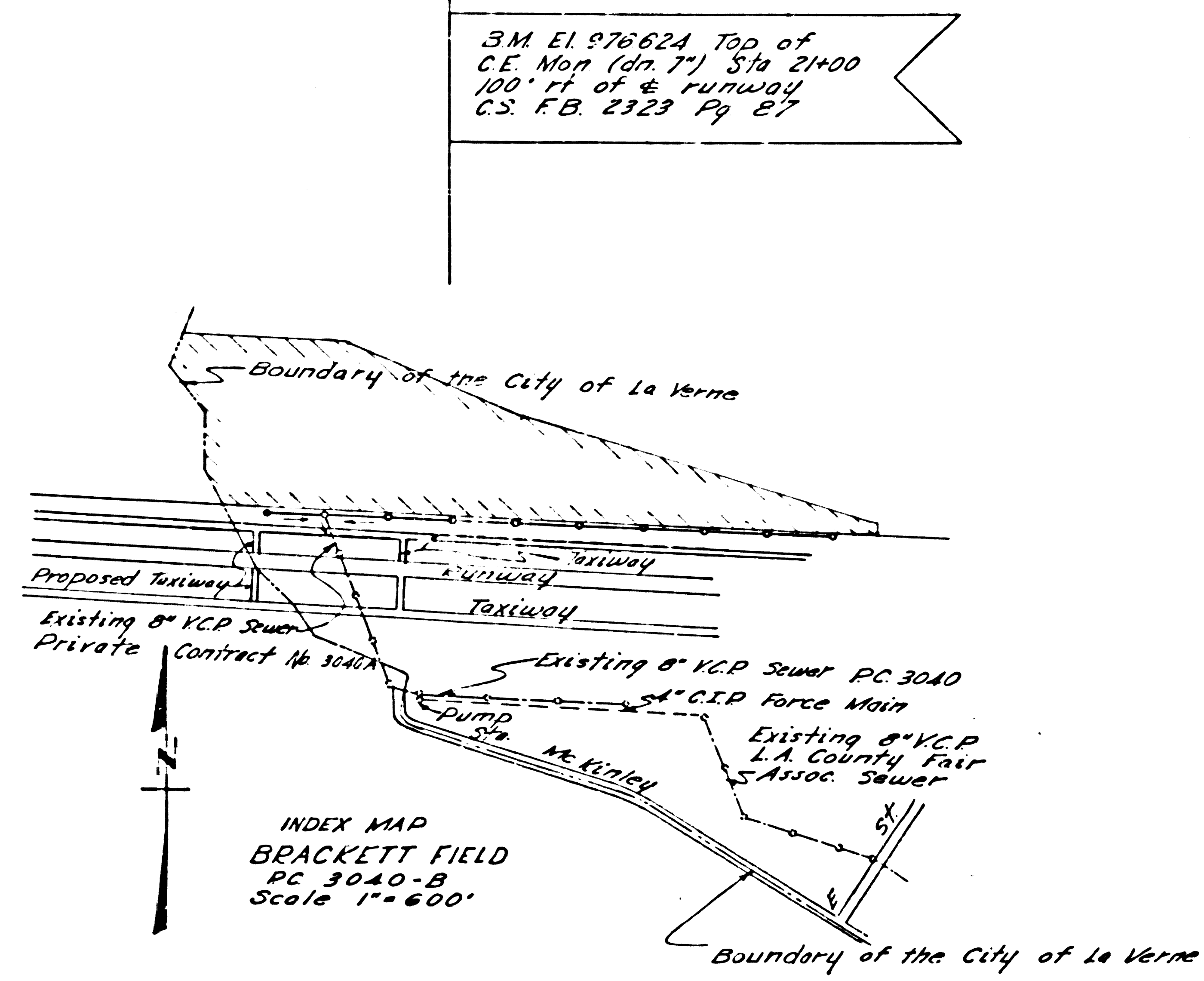
BRACKETT FIELD - PHASE "A" LA VERNE, CALIF. SANITARY SEWER SYSTEM	
DEPT OF COUNTY ENGINEER	COUNTY OF LOS ANGELES, CALIF.
DESIGNED BY: T. STANGER	APPROVED: <i>H.L. Suda</i> ASSISTANT SANITATION ENGINEER
DRAWN BY: T. STANGER	
CHECKED BY: W. TEN	
SCALE: Horiz. 1" = 40' Vert. 1" = 4'	Cap Proj. No. 7440 - Spec. No. 19-4 C.S.D.
DATE: SEPT. 1955	REV. SHEET 6 OF 7

RL 10-1-58
B.M. 104 968.03

CAPITAL PROJECT NO. 7440.80
 PROF. E. ALIGNMENT AND GRADE OF
SANITARY SEWERS
 TO BE CONSTRUCTED IN
BRACKETT FIELD
PC 3040B (27755)
 PAGE 1 OF 5 PAGES

SCALE: HORIZ. 1" = 40 FT.
 VERT. 1" = 4 FT.
 MARCH 1959
 COUNTY OF LOS ANGELES, CALIFORNIA
 JOHN A. LAMBIE COUNTY ENGINEER
 SUBMITTED BY *H. H. Snelson* ASSISTANT SANITATION ENGINEER
 APPROVED BY *R. B. Hughes* SANITATION ENGINEER
 BY *C. P. Compton* CHIEF ENGINEER OF COUNTY SANITATION DISTRICT NO. 23
 OFFICE ENGINEER

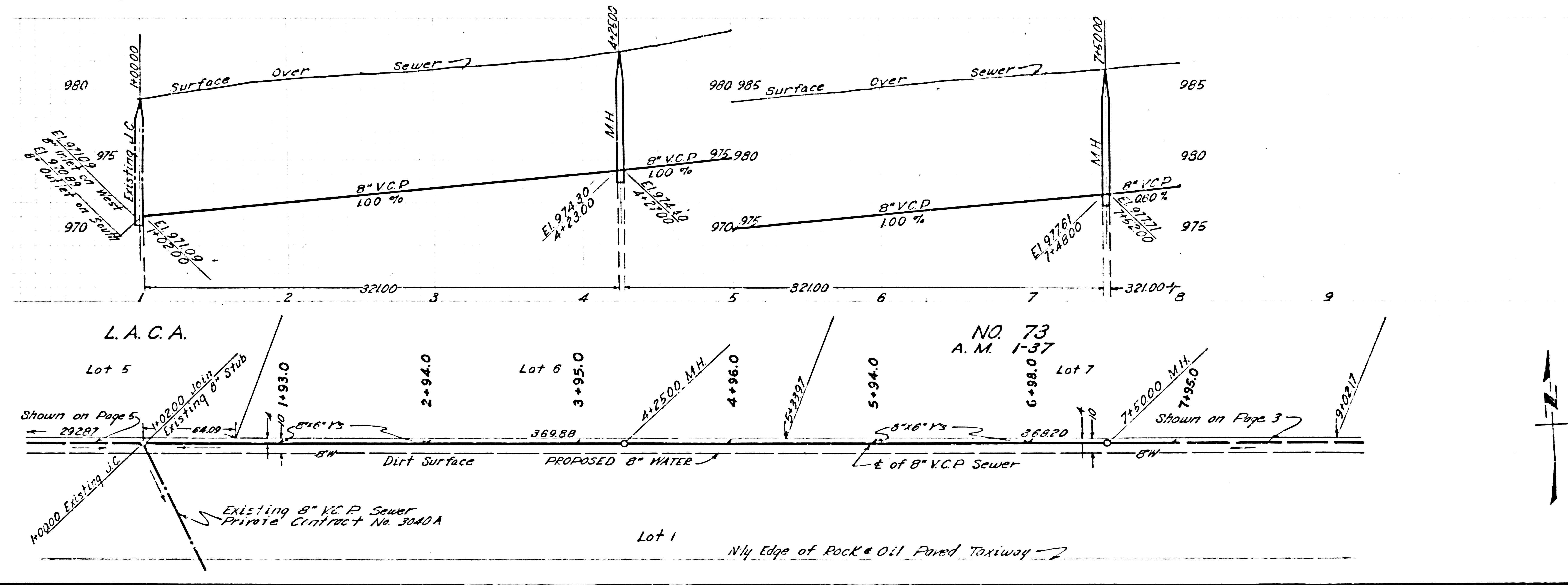
- USE STANDARD STRENGTH PIPE EXCEPT AS NOTED.
- USE CEMENT MORTAR FOR ALL VITRIFIED CLAY PIPE JOINTS.
- ALL STRUCTURES SHALL BE BRICK SEWER STRUCTURES AS PER PLAN NO. S.A-104, EXCEPT AS NOTED.
- USE STANDARD MANHOLE FRAMES AND COVERS AS PER PLAN NO. S.A-117, EXCEPT AS NOTED.
- RESURFACE TRENCH WITHIN PAVED AREA WITH PREMIX ROCK AND ONE INCHES IN THICKNESS EXCEPT AS NOTED.
- USE FORMULA NO. 1 SEC. 54 OF SPECIFICATIONS TO COMPUTE ALLOWABLE SLOPE.
- THE CONTRACTOR SHALL NOTIFY THE CONSTRUCTION AND STORM DRAIN DIVISION BY TELEPHONE MADISON 9-4747, EXT. 362 AT LEAST 24 HOURS BEFORE STARTING ANY WORK UNDER THIS CONTRACT.
- CONSTRUCT HOUSE LATERALS WITH INVERTS AT PROPERTY LINE:
 - 8 FEET BELOW CURB GRADE, OR GRADE OF CENTER LINE OF STREET EXCEPT AS NOTED.
- FIGURES IN CIRCLES AT ENDS OF HOUSE LATERALS INDICATE DEPTH BELOW CURB GRADE, OR GRADE OF CENTER LINE OF STREET.
- FIGURES IN CIRCLES AT ENDS OF HOUSE LATERALS INDICATE HOUSE LATERALS SHALL BE CONSTRUCTED WITH $\frac{1}{8}$ " RISE PER FOOT TO PROPERTY LINE.
- WORDS IN CIRCLES AT ENDS OF HOUSE LATERALS INDICATE THEY SHALL BE LAID HORIZONTAL AND HOUSE LATERALS SHALL BE CONSTRUCTED WITH $\frac{1}{8}$ " RISE PER FOOT TO PROPERTY LINE.
- CONSTRUCTION IN STATE HIGHWAYS SHALL CONFORM WITH STATE HIGHWAY PERMIT.



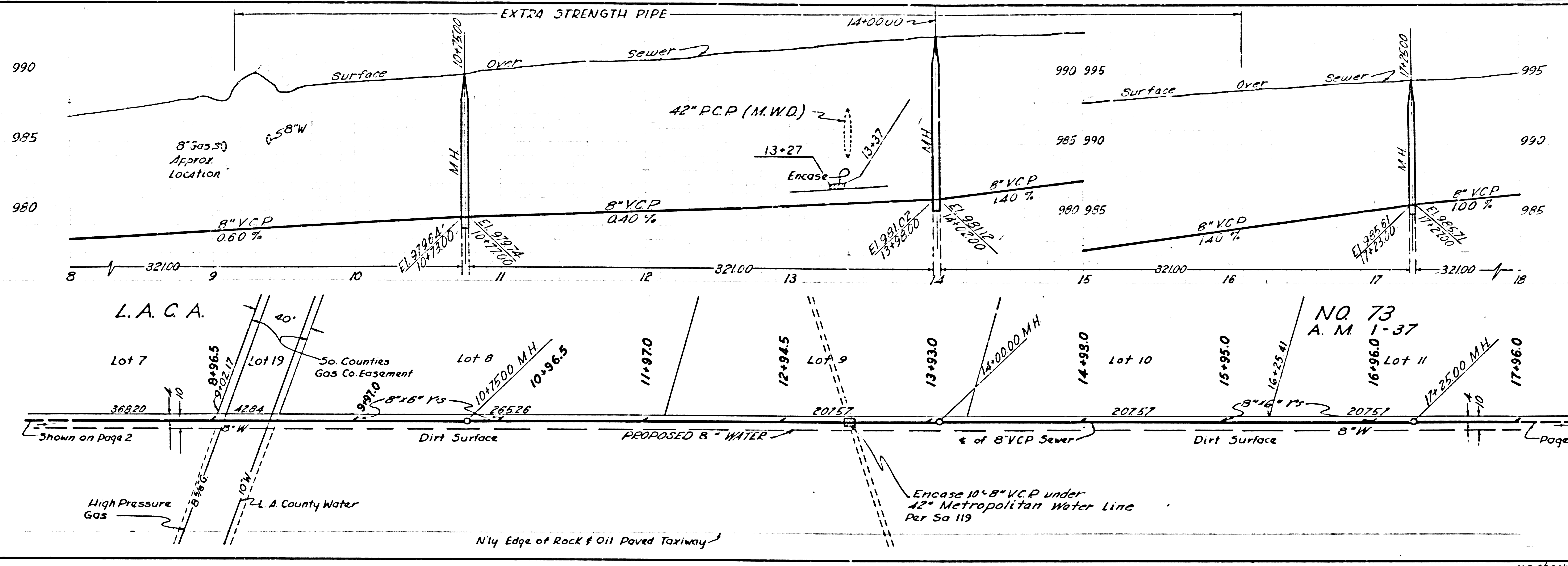
FOR LEGEND
 SEE PLAN NO. S.A-44

NOTE
 GRADES TO WHICH THIS IMPROVEMENT IS TO BE CONSTRUCTED ARE SHOWN ON PLANS AND PROFILES. GRADE POINTS FOR TOP OF CURB, CENTER LINE OF STREET OR CENTER LINE OF ALLEY ARE SHOWN BY CIRCLES ON PROFILES AT ALL POINTS BETWEEN DESIGNATED POINTS THE GRADE SHALL BE ESTABLISHED SO AS TO CONFORM TO A STRAIGHT LINE DRAWN BETWEEN SAID DESIGNATED POINTS.
 ELEVATIONS ARE IN FEET ABOVE U. S. C. & G. S. SEA LEVEL DATUM AS OF 1929.
 UNIT PRICES FOR ADDITIONAL WORK WHICH MAY BE REQUIRED BUT WHICH CANNOT BE ASCERTAINED IN ADVANCE, SHALL BE SUBMITTED IN THE PROPOSAL.
 THIS DRAWING AND THE DATA HEREON ARE HEREBY MADE A PART OF THE SPECIFICATIONS.

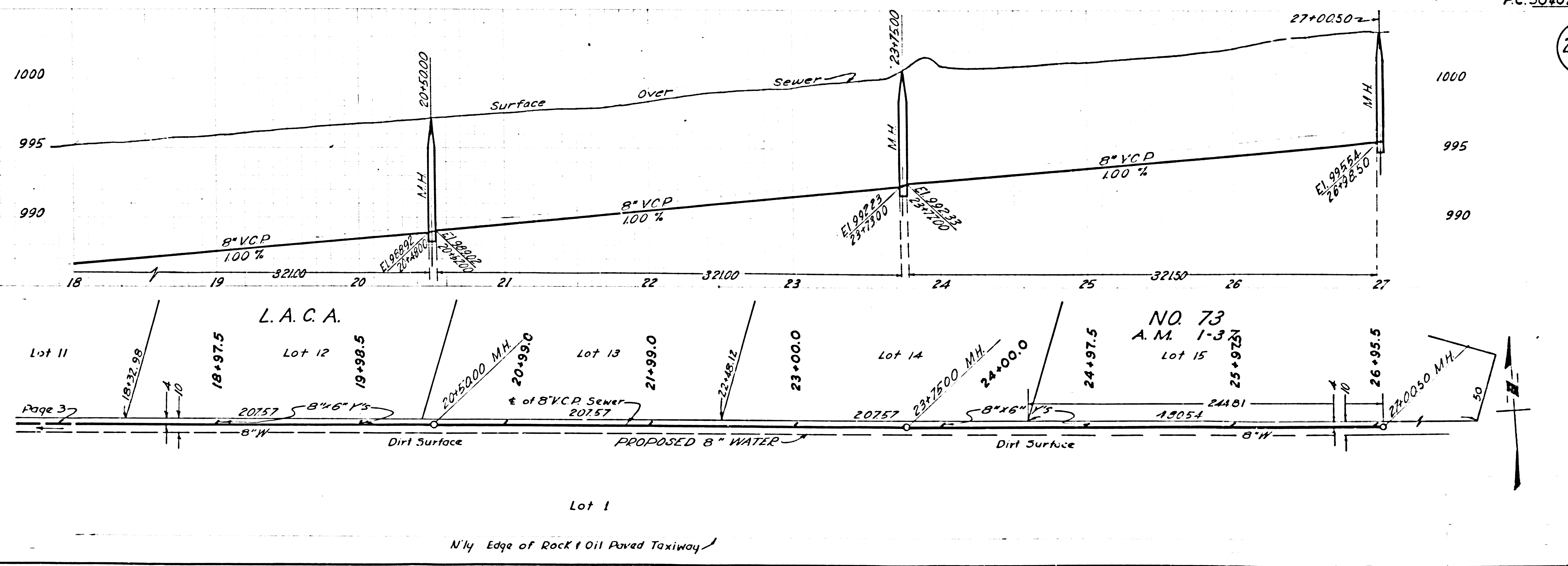
REFERENCES			
W. S. 48 D-4	DESIGNED	STANGER & TEN	Febr. 1959
A. B.	TRACED	W. Y. TEN	Febr. 1959
F. B. 2323	CHECKED	B. Kriege	Mar. 1959



27,757

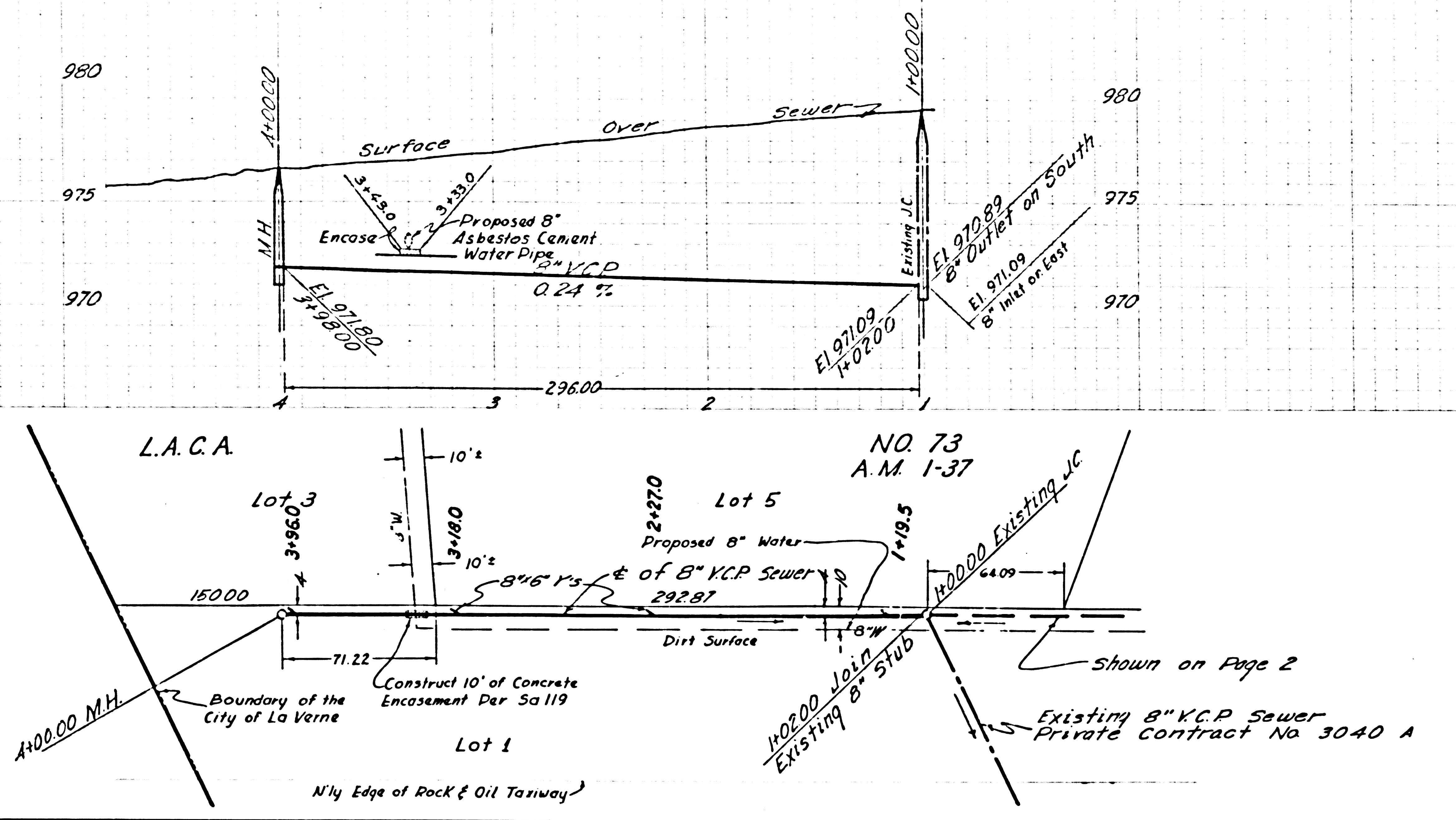


27,758



BC 3040B CRYSTALL BRONCE NO 144080 BRACKELL FIELD Page 2 of 2 6/8/62

27,759



US. checked PL. 3-0-59

PAGE