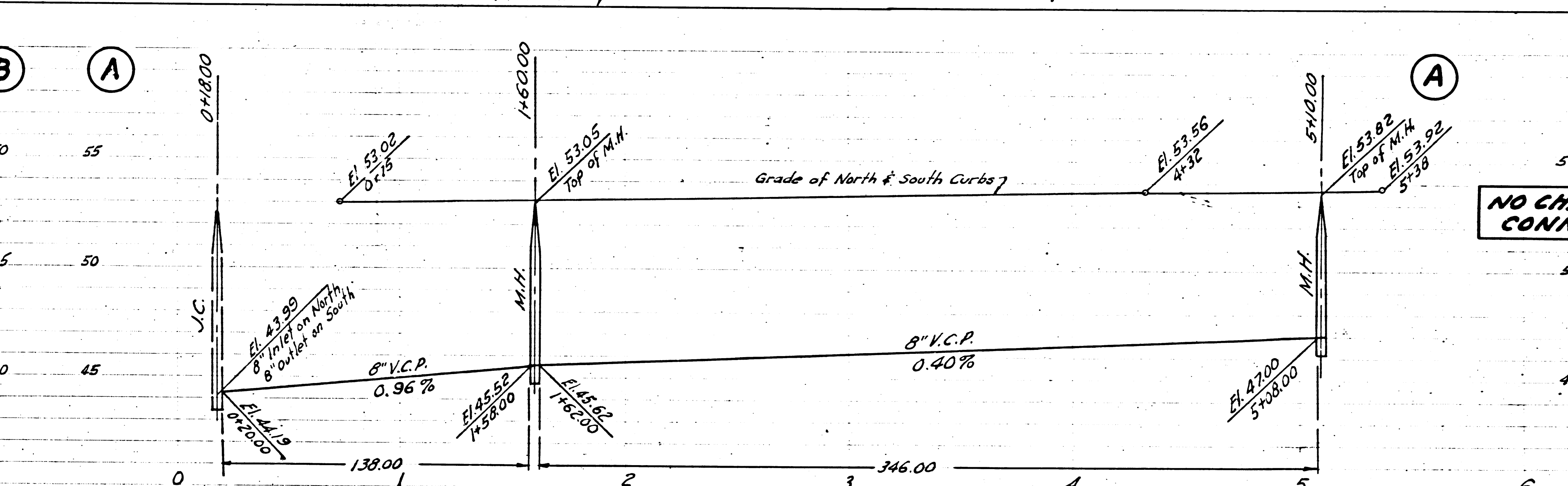
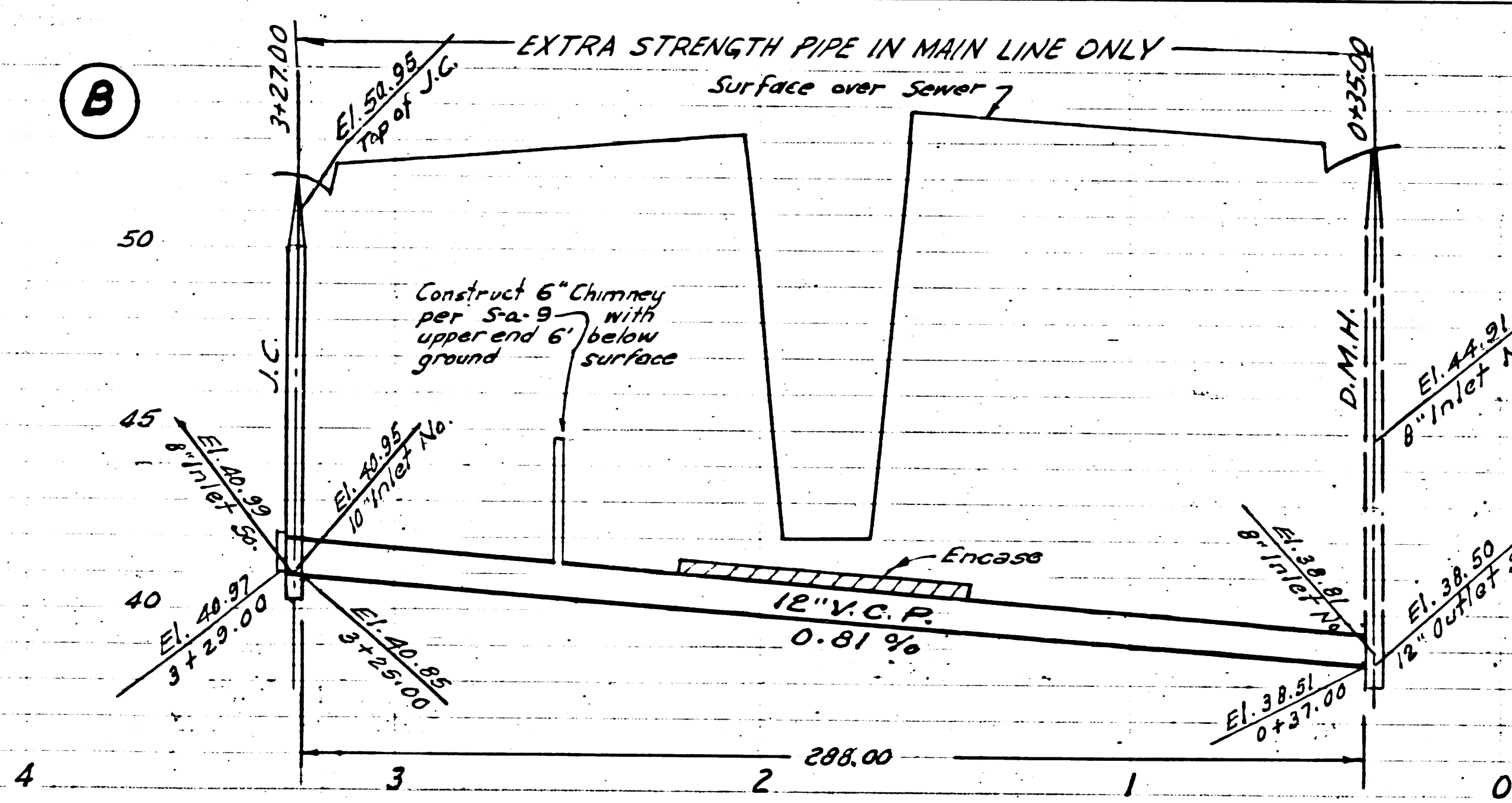


P.C. 3062
J.N. 0990.71
Page 6

ARG FOR
SECTION'S

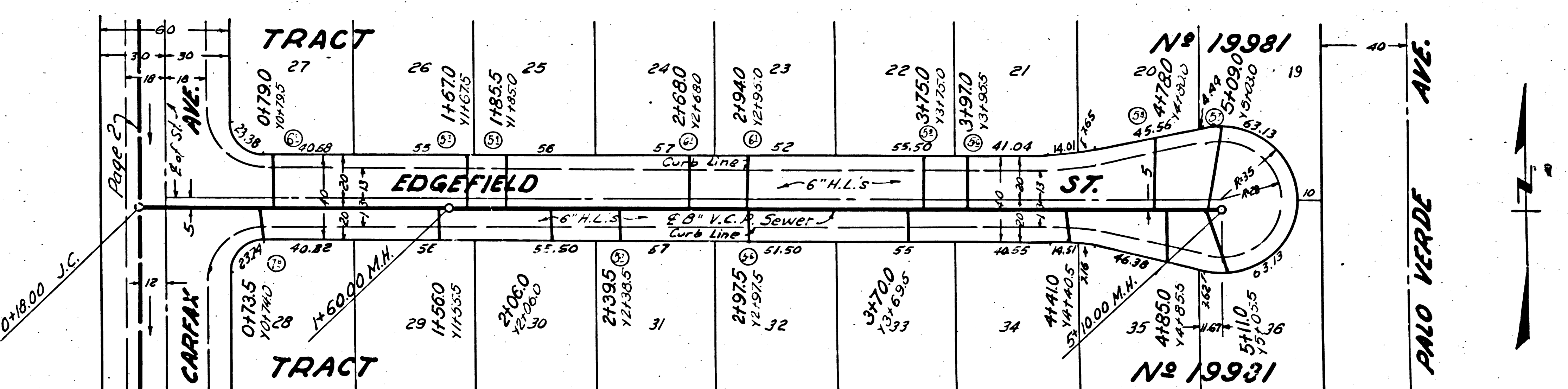
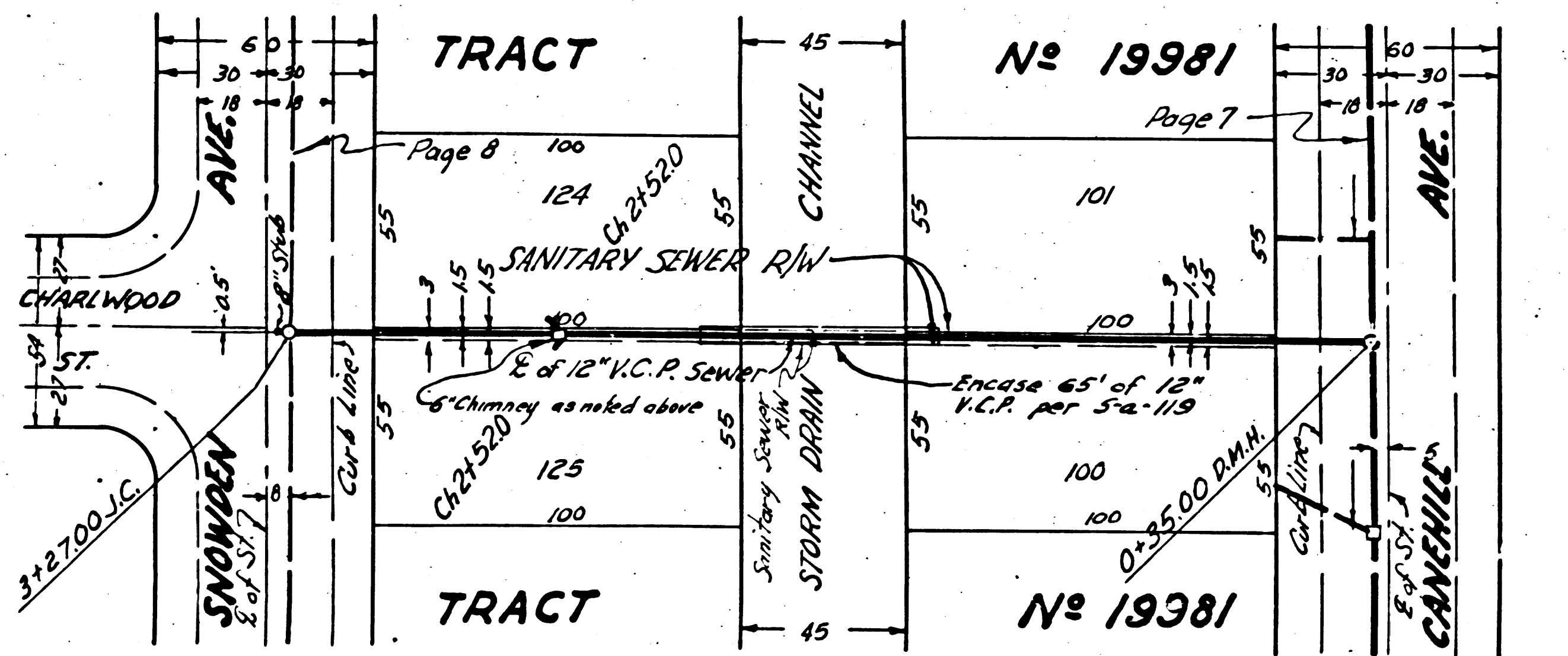
9,312



P.C. 3062
J.N. 0990.71
Page 5

NO CHARGE FOR
CONNECTIONS

9,311



Checked 11-22-54 [Signature]

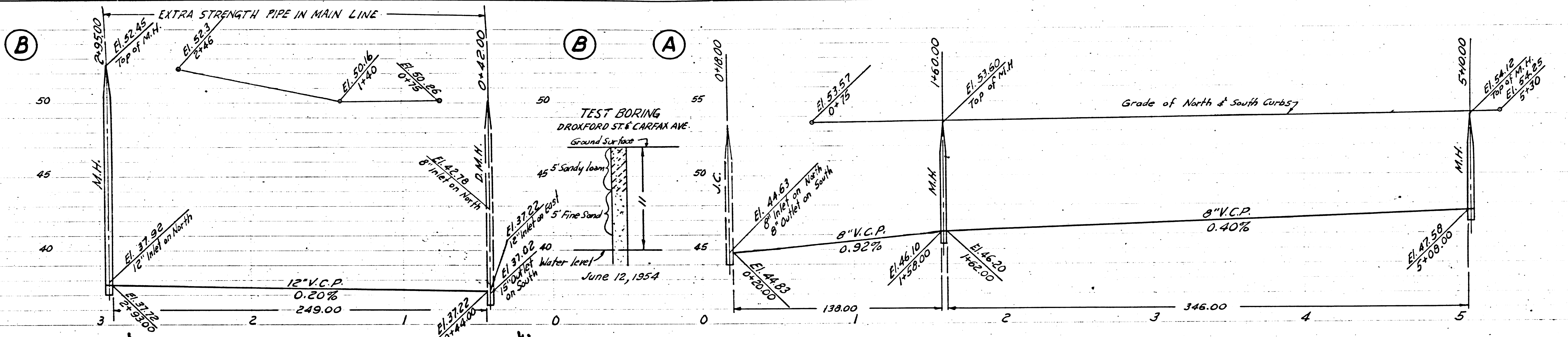
P.C. 3062 TRACT No 19981

1508011

P.C. 3062
J.N. 0990.71
Page 7

NO CHARGE FOR CONNECTIONS

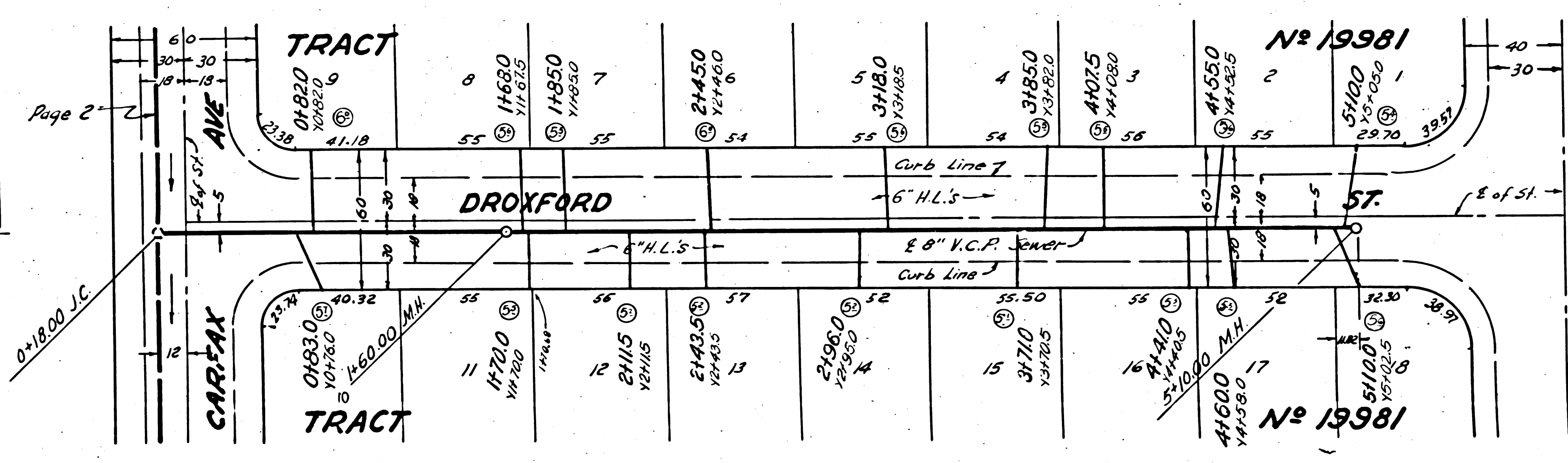
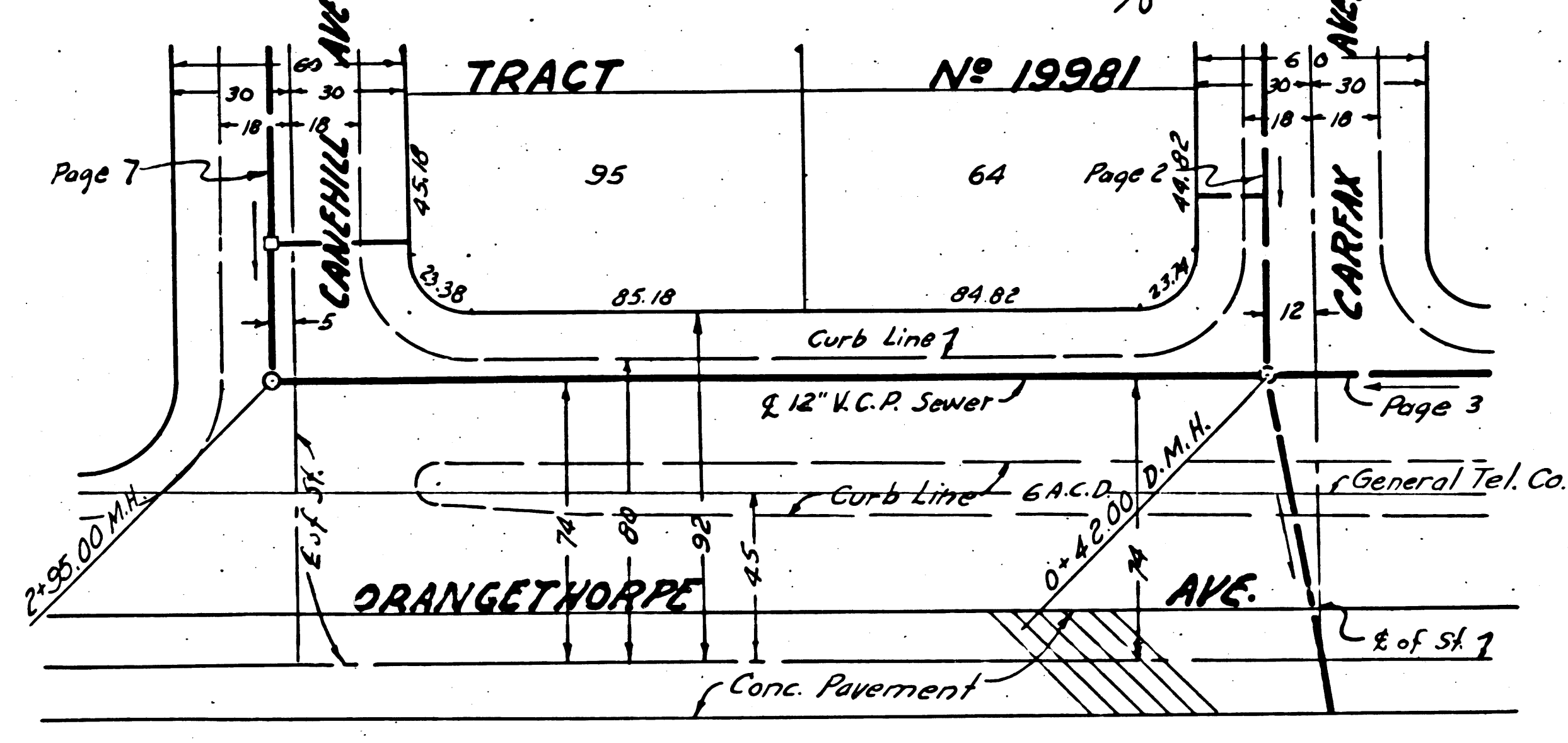
19,313



P.C. 3062
J.N. 0990.71
Page 6

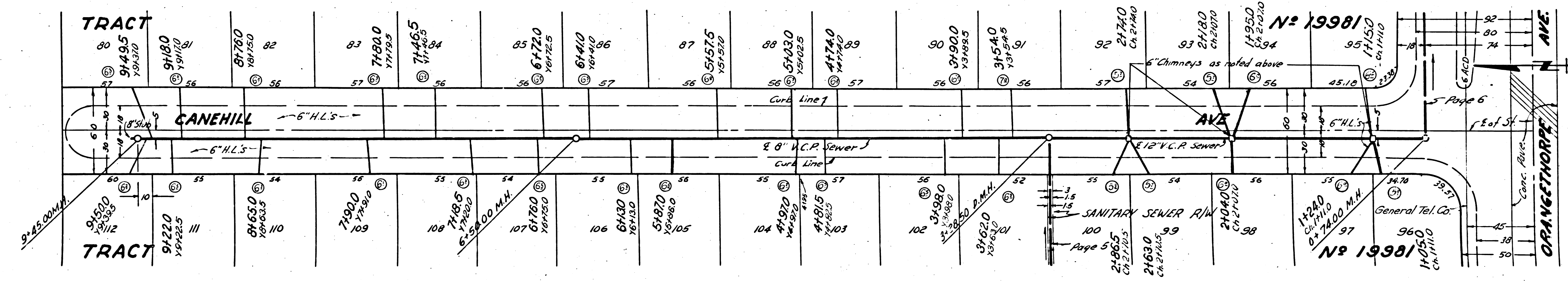
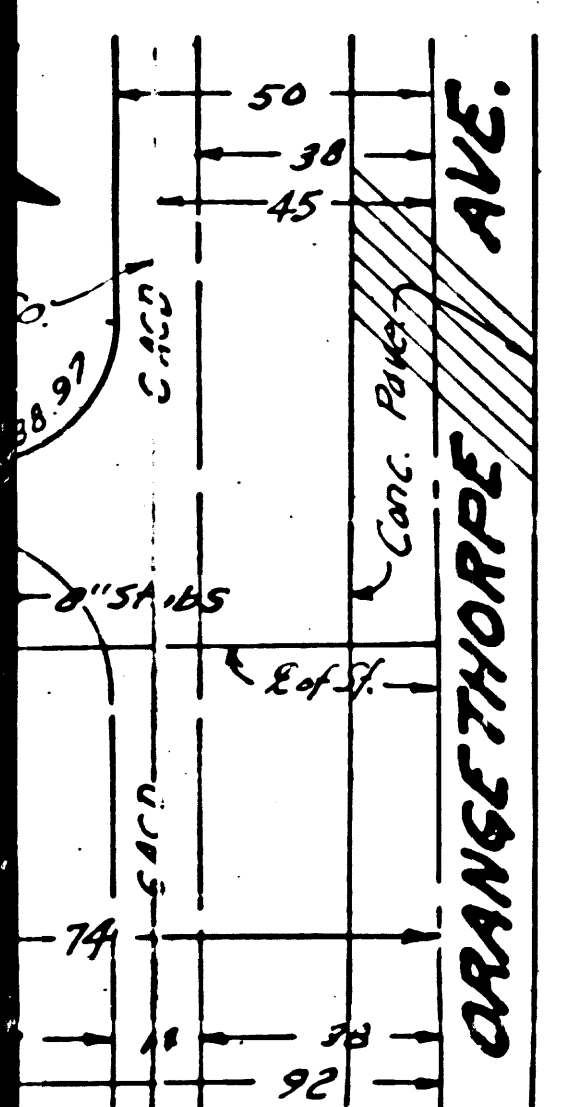
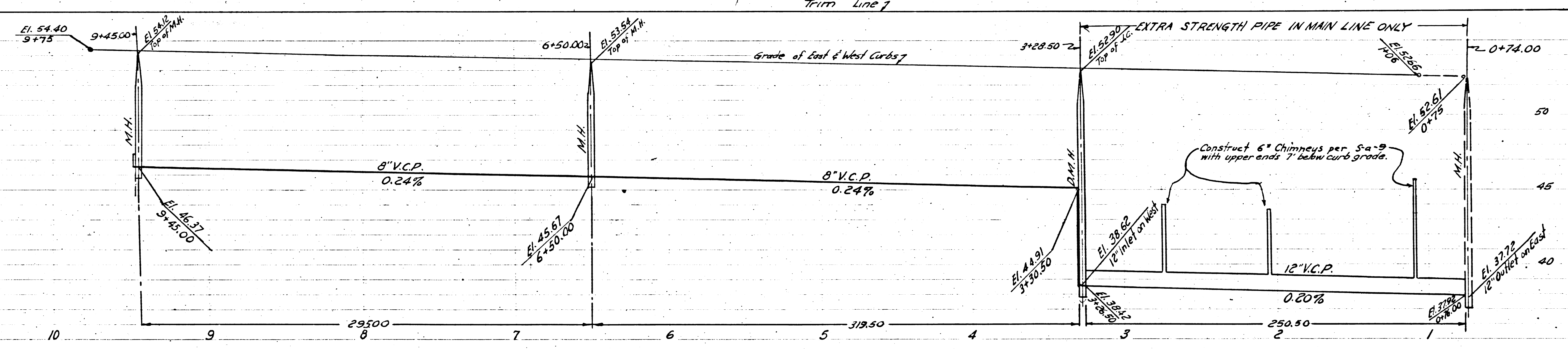
NO CHARGE FOR CONNECTIONS

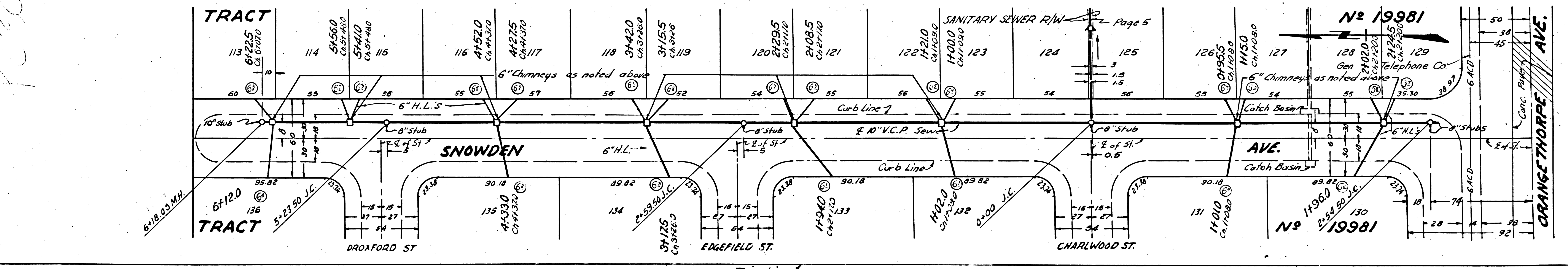
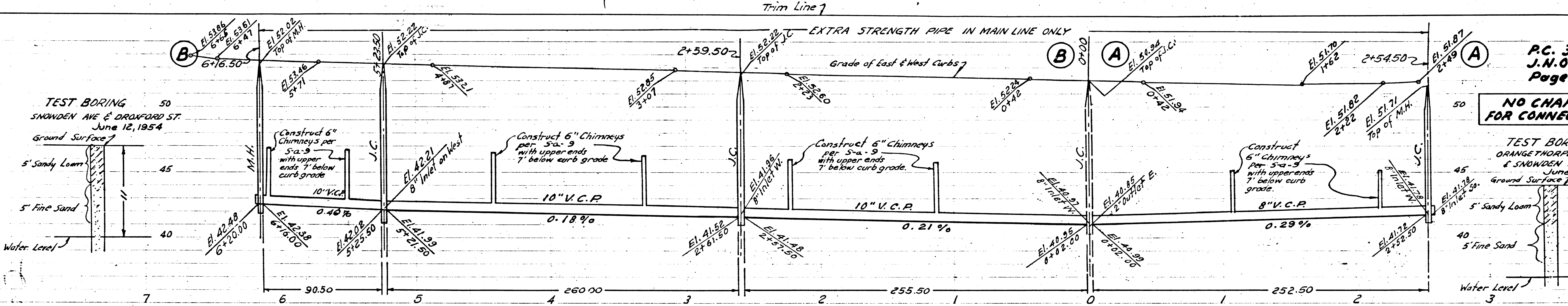
19,312



5187
 (A) P.C. 3062
 J.N. 0990.71
 Page 8
NO CHARGE FOR CONNECTIONS
 TEST BORING
 ORANGETHORPE AVE
 & SANDWICH AVE
 June 12, 1954
 Ground Surface 7
 5' Sandy Loam
 4' Fine Sand
 Water Level 3
 19,314

P.C. 3062
 J.N. 0990.71
 Page 7
NO CHARGE FOR CONNECTIONS
 19,313





PC. 3062
J.N. 0990.71
Page 8

NO CHARGE
FOR CONNECTIONS

TEST BORING
ORANGETHORPE AVE
& SNOWDEN AVE
June 12, 1954

19.314

PC 3062

Nº 19981

Nº 19981

ORANGETHORPE AVE.

P.C. 3052
J.N. 0930.71
Page 5

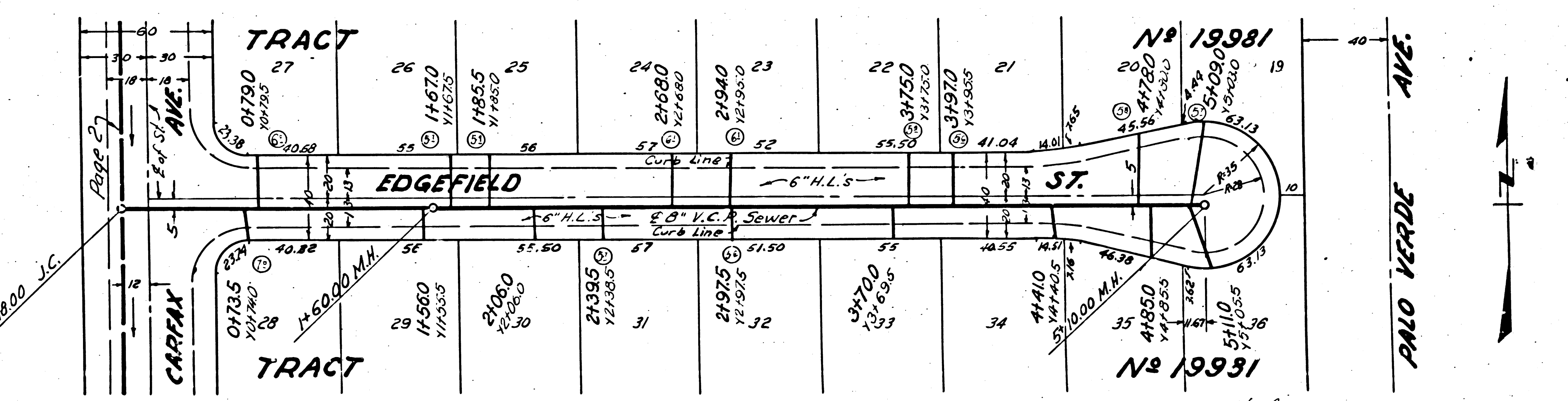
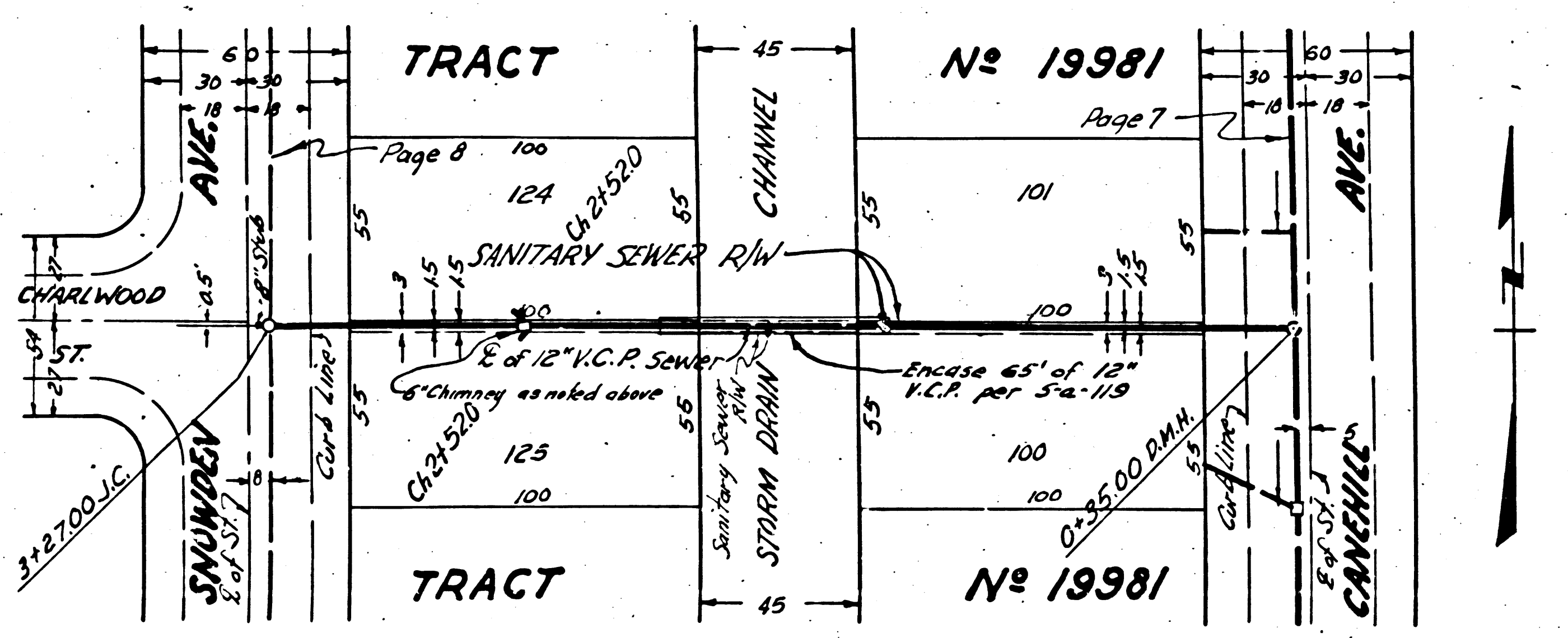
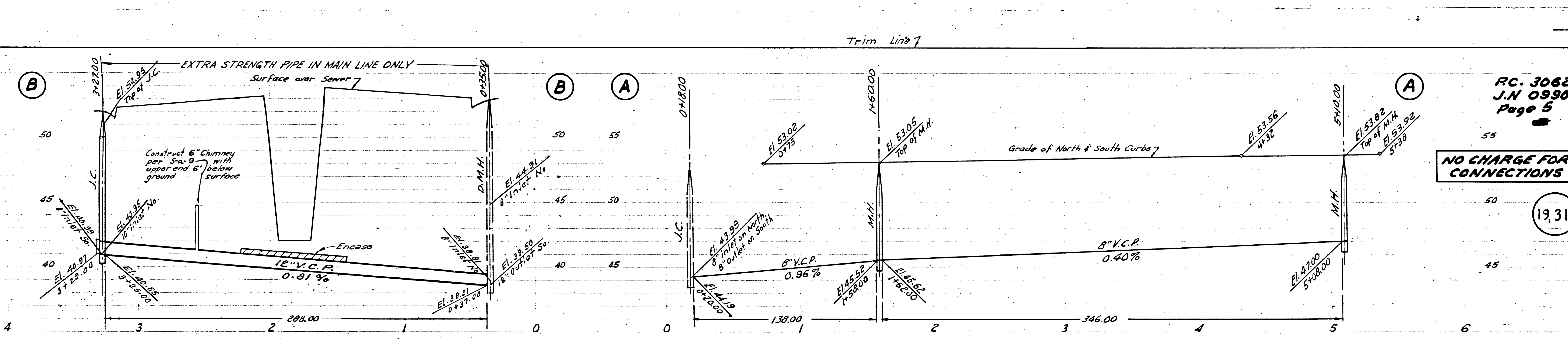
NO CHARGE FOR CONNECTIONS

19,312

P.C. 3062
J.N. 0930.71
Page 5

NO CHARGE FOR CONNECTIONS

19,311



Checked 11-22-54 W. Green

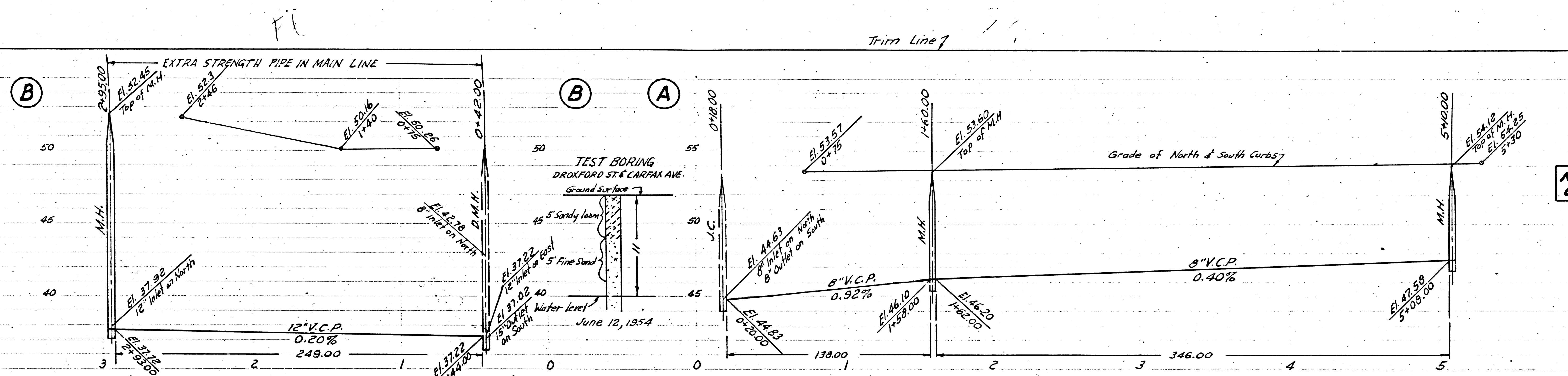
P.C. 3062 TRACT No. 19981

15,080 C.V. 11

PC. 3062
J.N. 0990.71
Page 7

NO CHARGE FOR CONNECTIONS

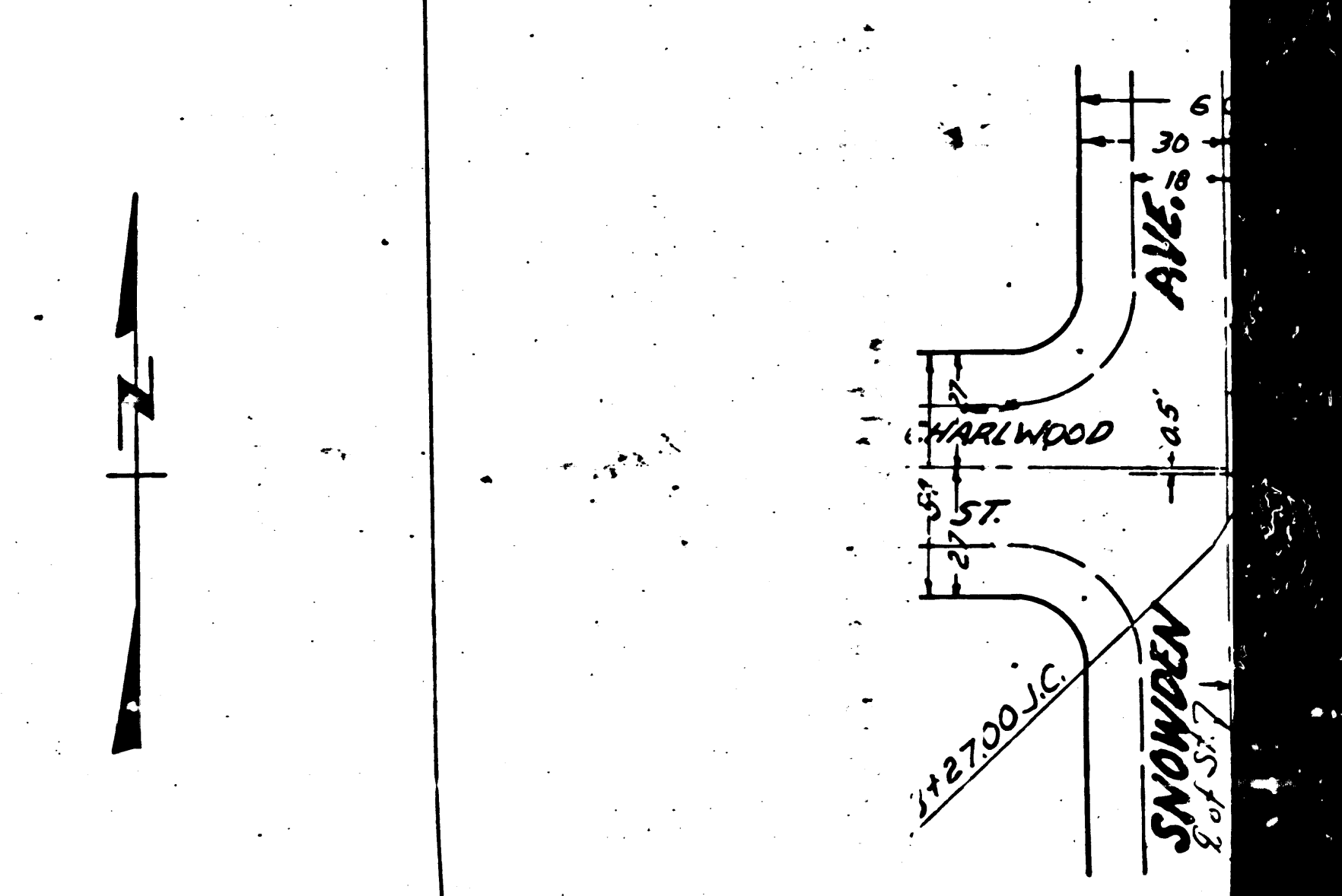
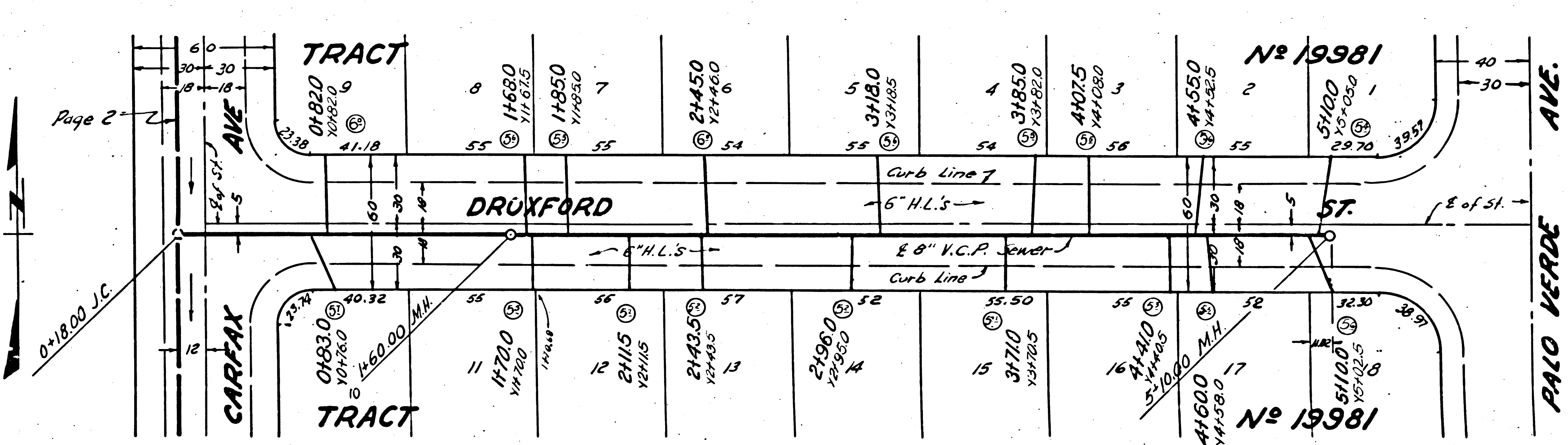
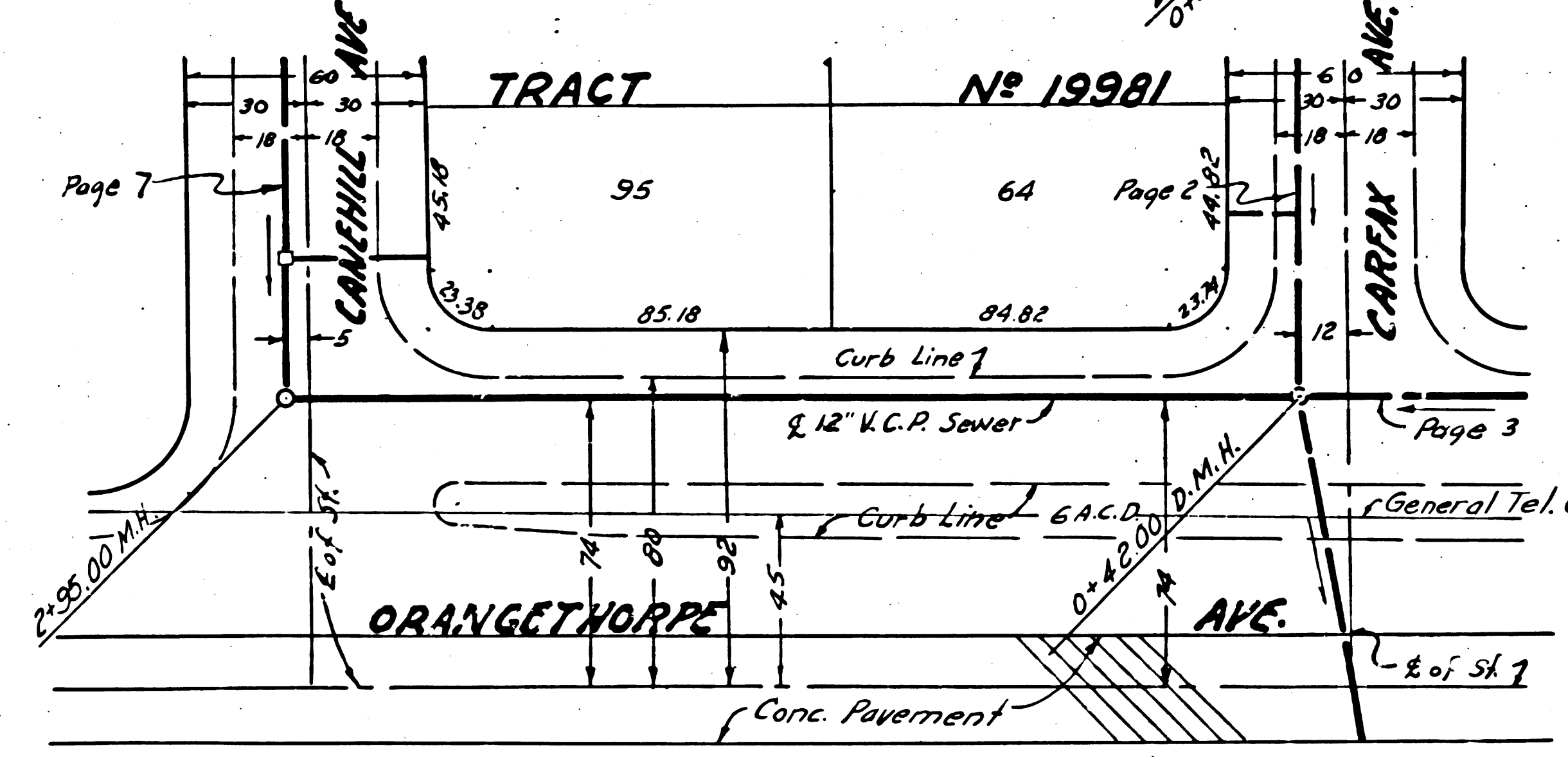
19,313



PC. 3062
J.N. 0990.71
Page 6

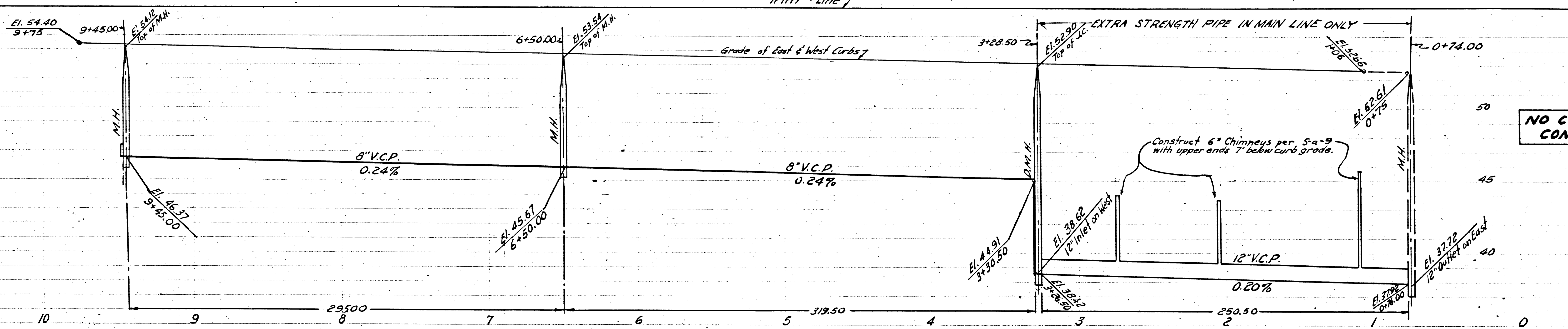
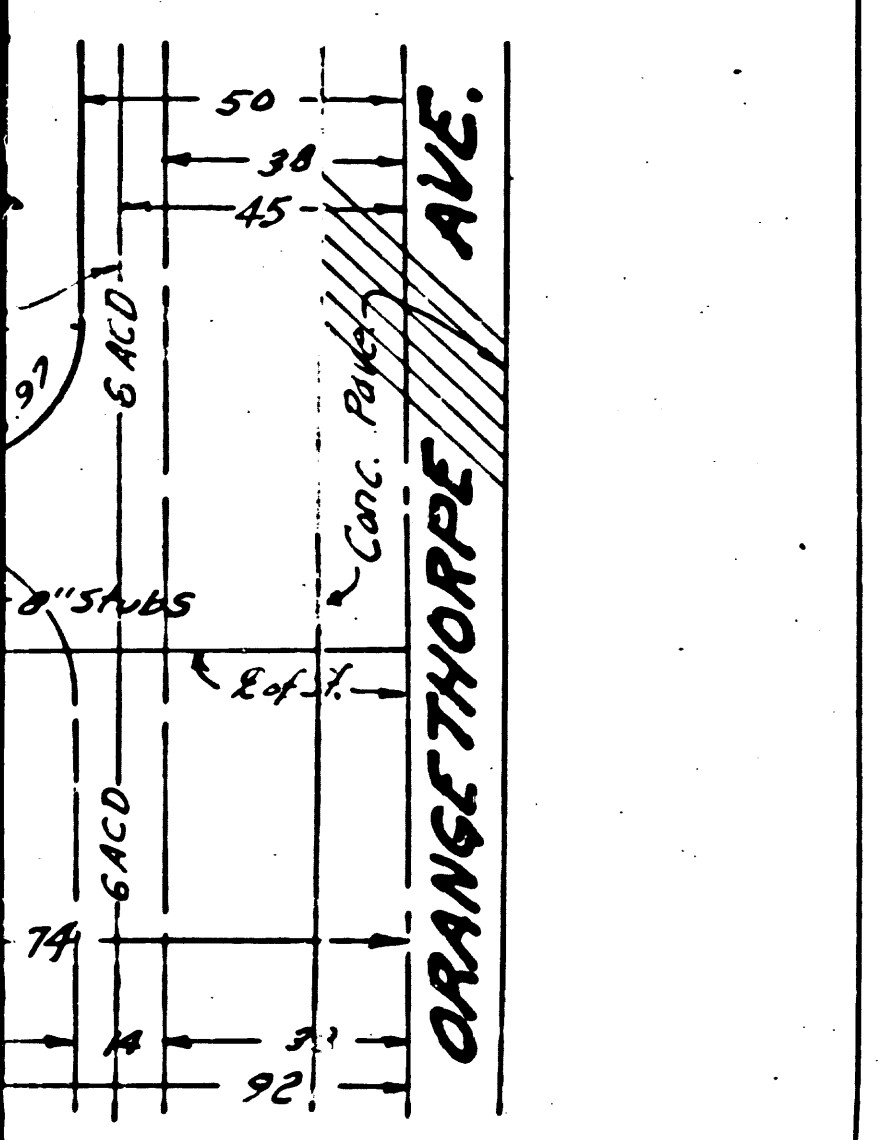
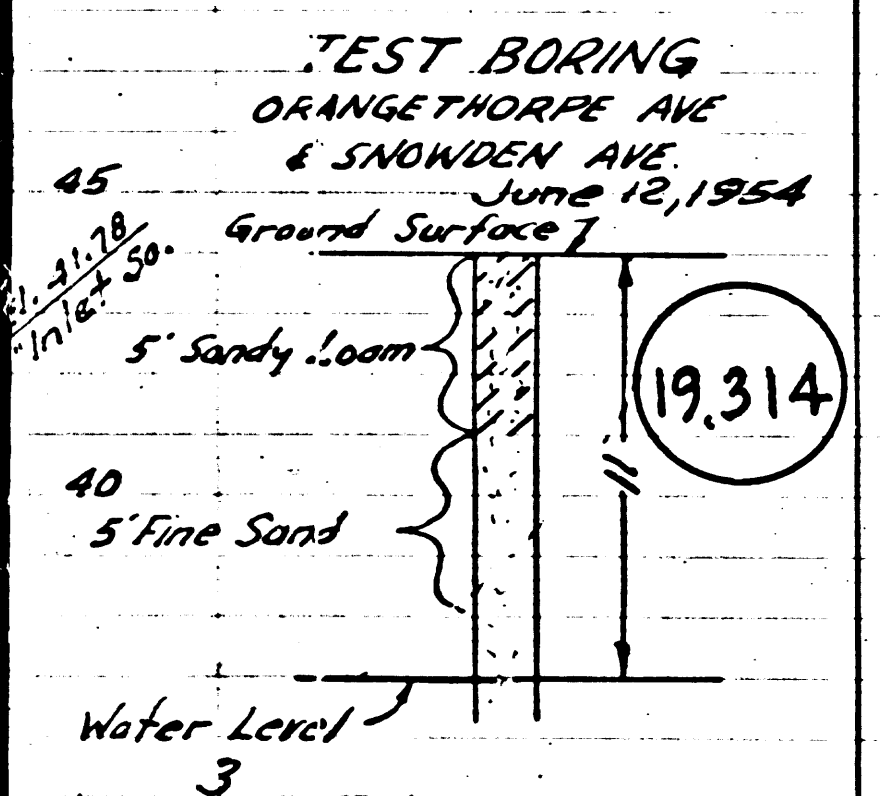
NO CHARGE FOR CONNECTIONS

19,312



P.C. 3062
J.N. 0990.71
Page 6

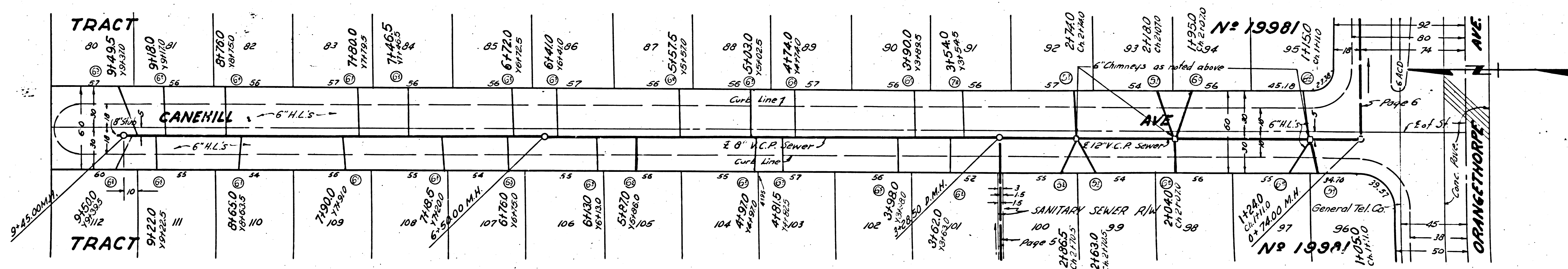
NO CHARGE FOR CONNECTIONS



P.C. 3062
J.N. 0990.71
Page 7

NO CHARGE FOR CONNECTIONS

19,313



Trim Line 2

Trim Line 7

BELLFLOWER BLDG DIST. No 4

NOTE:

Provide stakes on the property lines or property lines produced at right angles to the sewer line at the center line of each manhole.

No representative of the County Engineer will survey or layout any portion of the work.

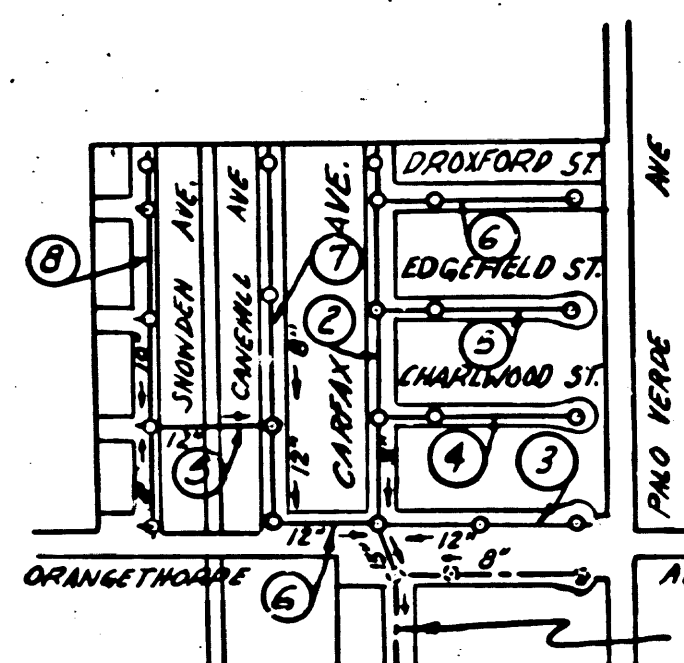
The owner or his authorized representative shall furnish the County Engineer with grade sheets and stations for all house laterals and Y branches and shall provide stakes for them at their proper locations with stationing plainly marked. Any change in location shall be requested in writing by the owner or his representative.

No revisions shall be made in these plans without the approval of the County Engineer.

1. Use standard manhole frames and covers, S-a-117.
2. Use standard strength pipe except as noted.
3. Use joint compound for all vitrified clay pipe joints per specs, sec. 31.
4. Resurface all trench within paved area to meet L.A. County Road Dept. or California State Highway Dept. requirements in accordance with permit.
5. Encase four feet of sewer at points of interference with poles, S-a-119.
6. House laterals to be constructed with inverts at property line 5 feet below curb grade except as noted.
7. All structures shall be brick sewer structures, S-a-104.
8. For allowable leakage test, use Formula No. 2, Spec's, Sec. 51.
9. Manhole tops in unimproved Rights-Of-Way to be 6" above finish grade.

B.M. SY 755 El. 54.314 2001 spk. in conc. pmt. 14' south of E of Orangehurst Ave. 70' East of E of Woodruff Ave.

SHEET	PAGE
1	1-A
2	5-B



INDEX MAP
TRACT No 19981
P.C. 3062 J.N. 0990.71

NO CHARGE FOR CONNECTIONS
24 Curlew 8-2-54

PROFILE, ALIGNMENT AND GRADE OF
SANITARY SEWERS
TO BE CONSTRUCTED IN

P.C. 3062
J.N. 0990.71
PAGE 1

TRACT No 19981

19,307

PRIVATE CONTRACT NO. 3062

W. S. 33

2 SHEETS

Scale: VERT. 1"=4' HORIZ. 1"=40' JUNE 1954

PREPARED IN THE OFFICES OF

BARCLAY SURVEYING COMPANY

D. Bate
Reg. C. E. No. 1137

FOR LEGEND SEE PLAN NO. S-a-64

NOTE:

Grades to which this improvement is to be constructed are shown on plans and profiles. Grade points for top of curbs, center line of streets, or center line of alleys are shown by circles on profiles. At all points between designated points the grade shall be established so as to conform to a straight line drawn between said designated points.

Elevations are in feet above U.S.G.S. datum or mean sea level.

This drawing and the data hereon are hereby made a part of the specifications. Work shall be constructed according to specifications on file in the office of the County Engineer and shall be prosecuted only in the presence of the County Engineer.

Before work can be started, the contractor must obtain a permit to excavate in County streets from the L.A. County Road Dept., 108 W. 2nd St. and make a deposit with the County Engineer, 733 L.A. County Engineering Building, sufficient to cover the cost of construction inspection and record plans.

Approval of this plan by the County of Los Angeles does not constitute a representation as to the accuracy of the location of or the existence or non-existence of any underground utility, pipe, or structure within the limits of this project. This note applies to all sheets.

If work is to be done in a State Highway, a permit must be obtained from the State of California, Division of Highways, 120 South Spring Street.

COUNTY OF LOS ANGELES, CALIFORNIA

Approved, William J. Fox, County Engineer

Approved, A. M. Rawn
CHIEF ENGR. CO. SAN DIST. NO. 3

A. P. Collins
Sanitation Engineer

G. Posthumus
Office Engineer

Checked By: *P. K. ...* 8-11-54
Office of County Engineer, Reg. C. E. No. 7860

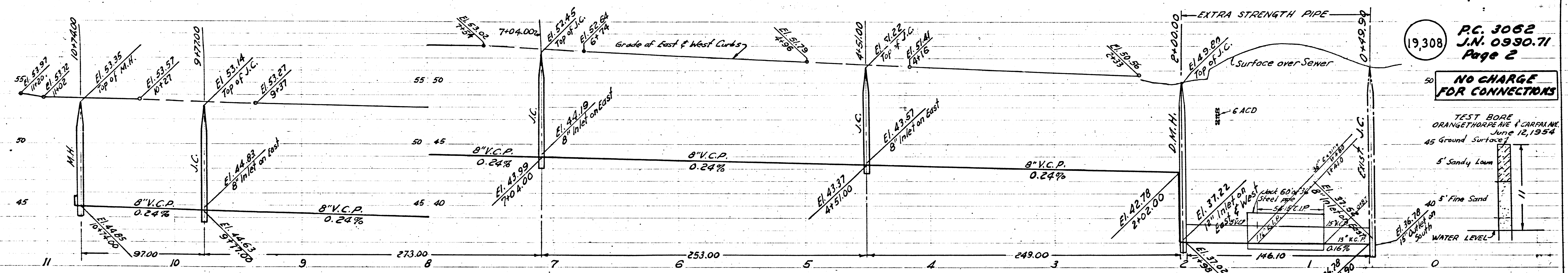
checked 11-22-54 *McLaren*

Trim Line

P.C. 3062 TRACT No 19981

RL

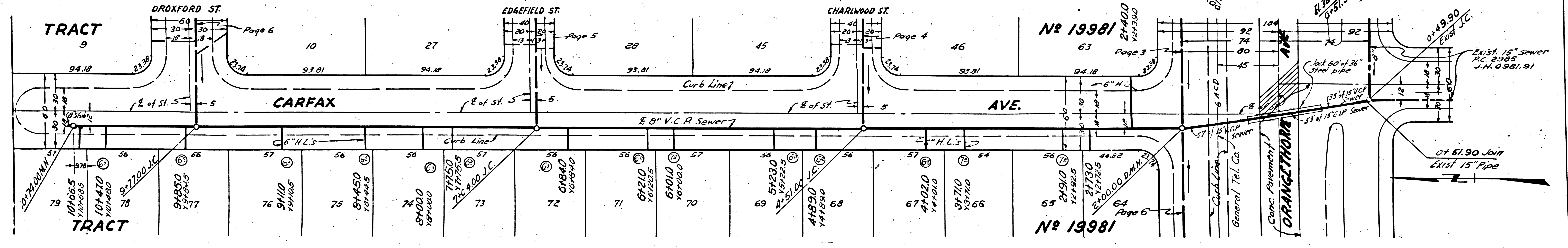
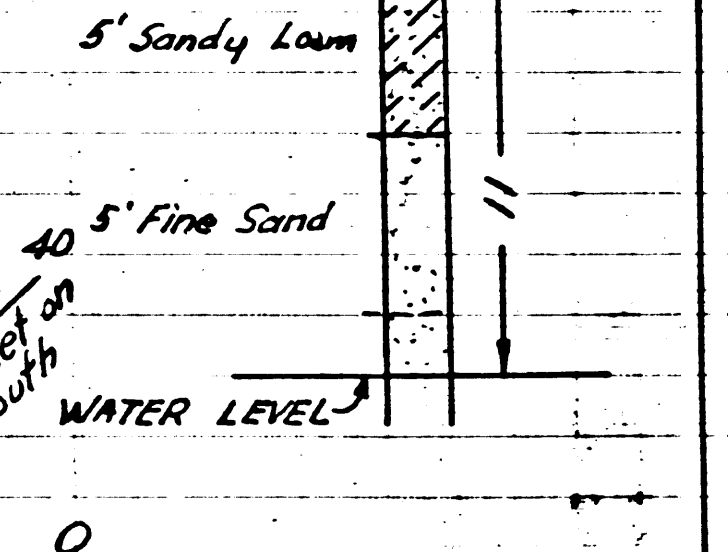
Trim Line 1



19,308
PC. 3062
J.N. 0930.71
Page 2

NO CHARGE FOR CONNECTORS

TEST BORE
 ORANGETHORPE AVE (CARROLL) June 12, 1954
 45 Ground Surface



Trim Line 2

P.C. 3062
J.N. 0990.71
Page 4

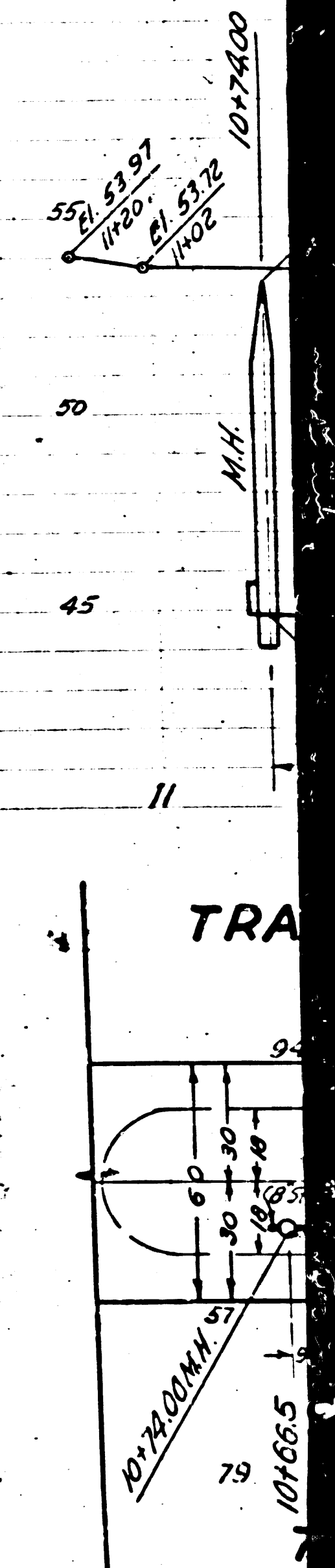
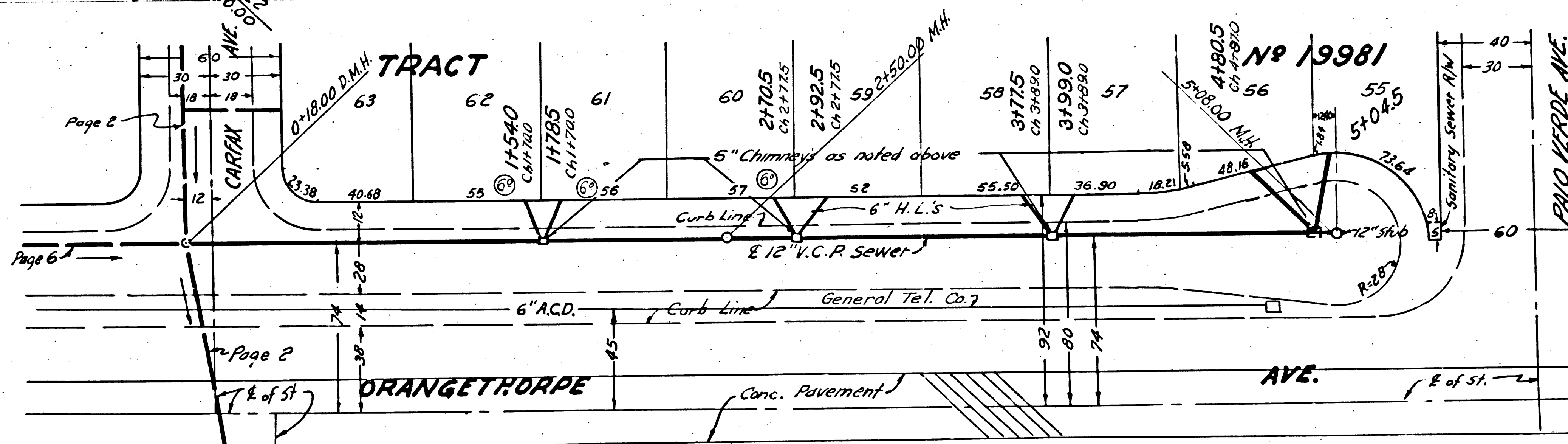
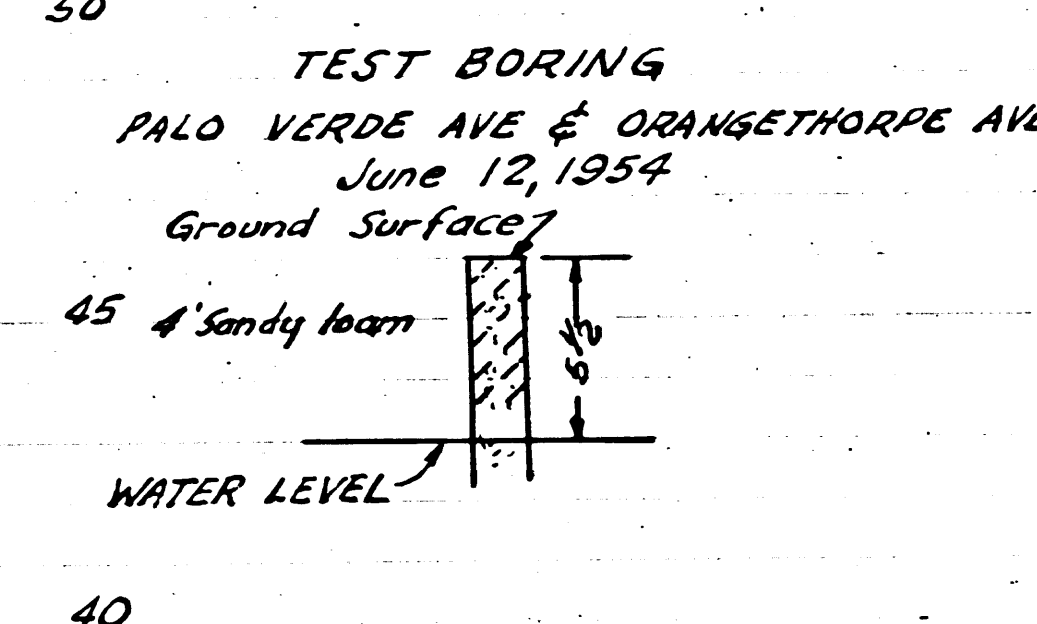
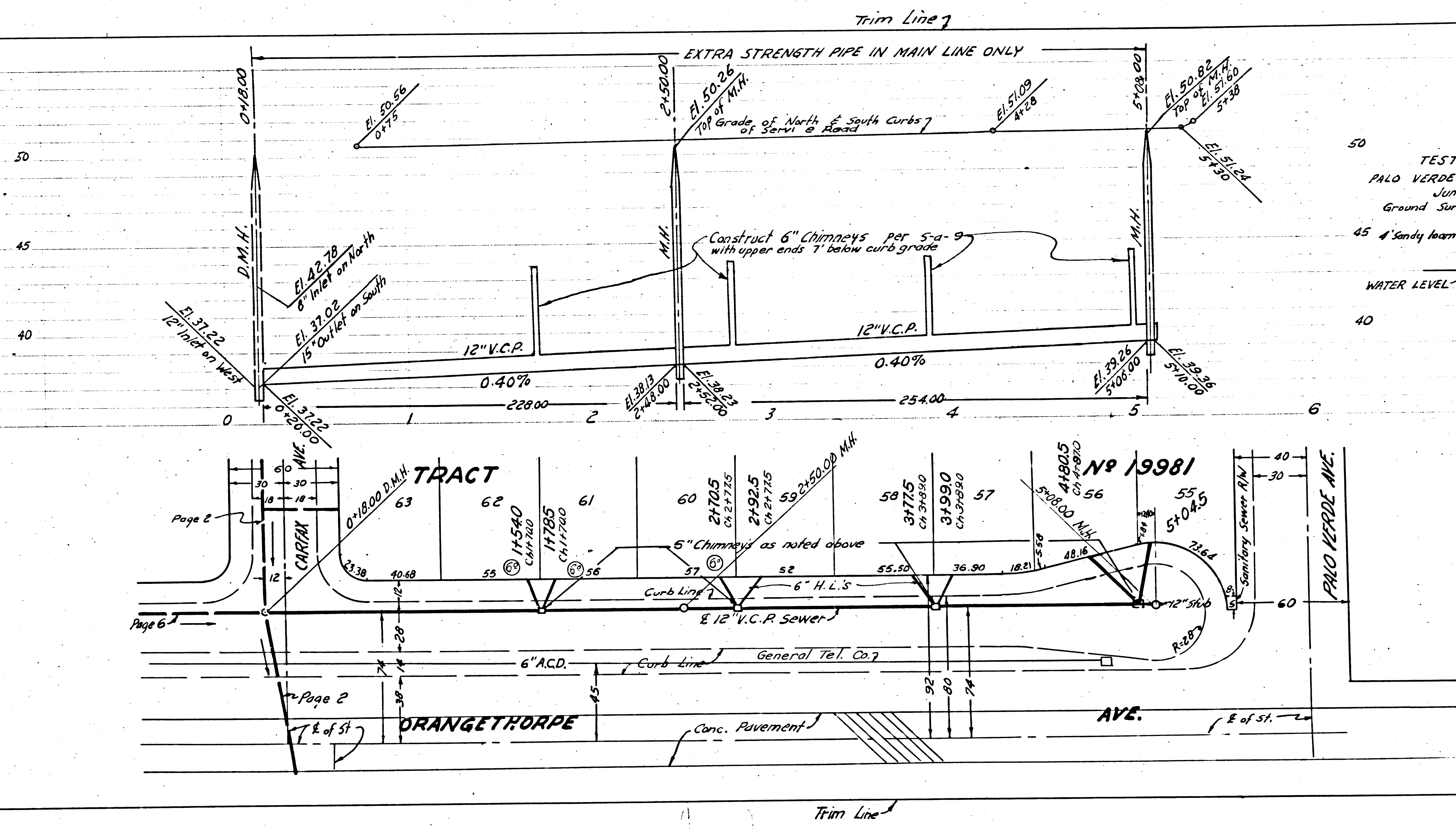
NO CHARGE FOR CONNECTIONS

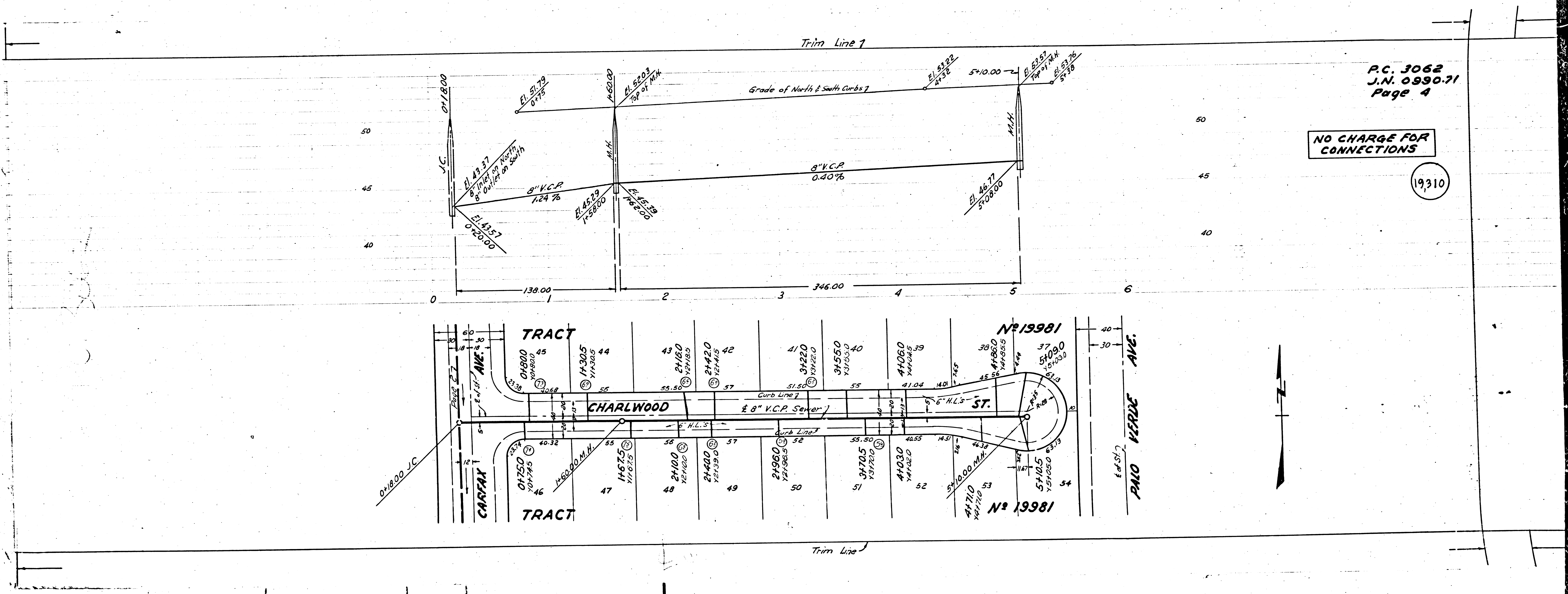
19310

P.C. 3062
J.N. 0990.71
Page 3

19309

NO CHARGE FOR CONNECTIONS





P.C. 3062
 J.N. 0930-71
 Page 4

NO CHARGE FOR CONNECTIONS

19310